

Ref. No.:	TS-SW-1												
Project Title:	Agreement No. CE50/2001 (DS) Drainage Improvement in Sha Tin and Tai Po - Design and Construction												
Location:	Shuen Wan												
Drawing No.	Tree Tag No.	Tree ID#	Botanical Name	Chinese Name	Overall Height (m)	Trunk Diameter (mm)	Average Crown Spread (m)	Condition (Good, fair, Poor, Dead)	Form (Good, Fair, Poor)	Survival of Transplantation (High, Medium, Low)	Amenity Value (High, Medium, Low)	Recommendation (Retain, Transplant, Fell)	Remarks
70102/C4/301	SW-T1	T1	<i>Bischofia polycarpa</i>	重陽木	8	300	8	Good	Good	Low	Medium	Retain	Root embeded in concrete structure
70102/C4/301	SW-T2	T2	<i>Leucaena leucocephala</i>	銀合歡	3	100	2	Fair	Fair	Low	Low	Fell	Double trunk
70102/C4/301	SW-T3	T3	<i>Litsea monopetala</i>	假柿樹	8	200	4	Fair	Poor	Low	Low	Retain	
70102/C4/301	SW-T4	T4	<i>Sapium sebiferum</i>	烏白	10	300	4	Poor	Poor	Low	Low	Fell	with climber
70102/C4/301	SW-T5	T5	<i>Clausena lansium</i>	黃皮	10	300	5	Fair	Fair	Low	Low	Fell	
70102/C4/301	SW-T6	T6	<i>Clausena lansium</i>	黃皮	8	160	4	Fair	Fair	Low	Low	Fell	
70102/C4/301	SW-T7	T7	<i>Ficus hispida</i>	對葉榕	8	200	4	Fair	Poor	Low	Low	Fell	
70102/C4/301	SW-T8	T8	<i>Litsea monopetala</i>	假柿樹	8	200	4	Fair	Fair	Low	Low	Fell	
70102/C4/301	SW-T9	T9	<i>Ficus hispida</i>	對葉榕	8	200	4	Poor	Poor	Low	Low	Fell	Double trunk, leaning
70102/C4/301	SW-T10	T10	<i>Citrus grandis</i>	柚	5	160	3	Fair	Poor	Low	Low	Fell	Unbalance crown
70102/C4/301	SW-T11	T11	<i>Sapium sebiferum</i>	烏白	4	200	3	Poor	Poor	Low	Low	Fell	Forked, with creeper
70102/C4/301	SW-T12	T12	<i>Clausena lansium</i>	黃皮	4	160	3	Fair	Poor	Low	Low	Fell	Leaning
70102/C4/301	SW-T13	T13	<i>Euphoria longan</i>	龍眼	10	300	4	Fair	Poor	Low	Low	Fell	Unbalance crown
70102/C4/301	SW-T14	T14	<i>Euphoria longan</i>	龍眼	10	200	5	Fair	Poor	Low	Low	Fell	Unbalance crown
70102/C4/301	SW-T15	T15	<i>Euphoria longan</i>	龍眼	10	400	6	Fair	Fair	Low	Low	Fell	
70102/C4/301	SW-T16	T16	<i>Sapindus mukurossi</i>	無患子	6	200	4	Fair	Fair	Low	Low	Fell	
70102/C4/301	SW-T17	T17	<i>Litsea monopetala</i>	假柿樹	10	400	4	Fair	Fair	Low	Low	Fell	Forked
70102/C4/301	SW-T18	T18	<i>Litsea monopetala</i>	假柿樹	8	200	4	Poor	Poor	Low	Low	Fell	Leaning
70102/C4/301	SW-T19	T19	<i>Euphoria longan</i>	龍眼	4	140	3	Poor	Poor	Low	Low	Fell	
70102/C4/301	SW-T20	T20	<i>Citrus grandis</i>	柚	5	200	3	Fair	Fair	Low	Low	Fell	
70102/C4/301	SW-T21	T21	<i>Mangifera indica</i>	杧果	5	200	3	Fair	Fair	Low	Low	Fell	
70102/C4/301	SW-T22	T22	<i>Litsea monopetala</i>	假柿樹	8	300	4	Fair	Poor	Low	Low	Fell	Leaning
70102/C4/301	SW-T23	T23	<i>Euphoria longan</i>	龍眼	8	300	6	Fair	Fair	Low	Low	Fell	Trunk leaning
70102/C4/301	SW-T24	T24	<i>Euphoria longan</i>	龍眼	8	300	4	Fair	Fair	Low	Low	Fell	
70102/C4/301	SW-T25	T25	Dead Tree	死樹	4	200	3	Dead	-	-	-	Fell	Covered by climber
70102/C4/301	SW-T26	T26	<i>Artocarpus heterophyllus</i>	菠蘿密	4	200	3	Fair	Fair	Low	Low	Fell	
70102/C4/301	SW-T27	T27	<i>Litsea monopetala</i>	假柿樹	8	300	4	Fair	Fair	Low	Low	Fell	
70102/C4/301	SW-T28	T28	<i>Litsea glutinosa</i>	潺槁樹	6	200	4	Fair	Fair	Low	Low	Fell	
70102/C4/301	SW-T29	T29	Dead Tree	死樹	5	160	3	Dead	-	-	-	Fell	with creeper
70102/C4/301	SW-T30	T30	<i>Syzygium jambos</i>	蒲桃	6	160	4	Fair	Poor	Low	Low	Fell	Unbalance crown
70102/C4/301	SW-T31	T31	<i>Litsea monopetala</i>	假柿樹	10	160	4	Fair	Fair	Low	Low	Fell	
70102/C4/301	SW-T32	T32	<i>Euphoria longan</i>	龍眼	8	400	4	Fair	Poor	Low	Low	Fell	Leaning
70102/C4/301	SW-T33	T33	<i>Syzygium jambos</i>	蒲桃	6	160	4	Fair	Fair	Low	Low	Fell	
70102/C4/301	SW-T34	T34	<i>Aporosa chinensis</i>	銀柴(大沙葉)	10	300	5	Fair	Poor	Low	Low	Fell	Forked
70102/C4/301	SW-T35	T35	<i>Cleistocalyx operculata</i>	水翁	8	300	4	Fair	Fair	Low	Low	Fell	Contored trunk
70102/C4/301	SW-T36	T36	<i>Euphoria longan</i>	龍眼	6	160	4	Fair	Poor	Low	Low	Fell	Leaning
70102/C4/301	SW-T37	T37	<i>Euphoria longan</i>	龍眼	8	200	4	Fair	Fair	Low	Low	Fell	
70102/C4/301	SW-T38	T38	<i>Ilex viridis</i>	亮葉冬草	8	200	4	Fair	Poor	Low	Low	Fell	Twist trunk
70102/C4/301	SW-T39	T39	<i>Litsea monopetala</i>	假柿樹	6	160	4	Fair	Fair	Low	Low	Fell	
70102/C4/301	SW-T40	T40	<i>Ilex viridis</i>	亮葉冬草	10	300	5	Fair	Fair	Low	Low	Fell	
70102/C4/301	SW-T41	T41	<i>Cleistocalyx operculata</i>	水翁	8	300	4	Fair	Poor	Low	Low	Fell	Leaning
70102/C4/301	SW-T42	T42	<i>Sapium sebiferum</i>	烏白	10	300	5	Fair	Poor	Low	Low	Fell	Leaning
70102/C4/301	SW-T43	T43	<i>Bischofia polycarpa</i>	重陽木	10	600	5	Fair	Fair	Low	Low	Fell	Double trunk
70102/C4/301	SW-T44	T44	<i>Ficus hispida</i>	對葉榕	4	160	3	Poor	Poor	Low	Low	Fell	Leaning
70102/C4/301	SW-T45	T45	<i>Aporosa chinensis</i>	銀柴(大沙葉)	5	200	4	Poor	Poor	Low	Low	Fell	Leaning
70102/C4/301	SW-T46	T46	<i>Ilex viridis</i>	亮葉冬草	6	160	3	Fair	Fair	Low	Low	Fell	with creeper
70102/C4/301	SW-T47	T47	<i>Sapium sebiferum</i>	烏白	10	400	5	Fair	Fair	Low	Low	Fell	
70102/C4/301	SW-T48	T48	<i>Bischofia polycarpa</i>	重陽木	8	300	4	Fair	Fair	Low	Low	Fell	
70102/C4/301	SW-T49	T49	<i>Ficus hispida</i>	對葉榕	6	200	4	Poor	Poor	Low	Low	Fell	Leaning
70102/C4/301	SW-T50	T50	<i>Euphoria longan</i>	龍眼	8	400	4	Fair	Fair	Low	Low	Fell	

Ref. No.:	TS-SW-1												
Project Title:	Agreement No. CE50/2001 (DS) Drainage Improvement in Sha Tin and Tai Po - Design and Construction												
Location:	Shuen Wan												
Drawing No.	Tree Tag No.	Tree ID#	Botanical Name	Chinese Name	Overall Height (m)	Trunk Diameter (mm)	Average Crown Spread (m)	Condition (Good, fair, Poor, Dead)	Form (Good, Fair, Poor)	Survival of Transplantation (High, Medium, Low)	Amenity Value (High, Medium, Low)	Recommendation (Retain, Transplant, Fell)	Remarks
70102/C4/301	SW-T51	T51	<i>Celtis sinensis</i>	朴樹	10	400	5	Fair	Fair	Low	Low	Fell	
70102/C4/301	SW-T52	T52	<i>Bischofia polycarpa</i>	重陽木	10	600	5	Fair	Poor	Low	Low	Fell	Double trunk
70102/C4/301	SW-T53	T53	<i>Bischofia polycarpa</i>	重陽木	10	400	5	Good	Good	Low	Medium	Retain	
70102/C4/301	SW-T54	T54	<i>Bischofia polycarpa</i>	重陽木	6	200	4	Fair	Fair	Low	Low	Retain	
70102/C4/301	SW-T55	T55	<i>Leucaena leucocephala</i>	銀合歡	6	160	4	Fair	Fair	Low	Low	Retain	Double trunk
70102/C4/301	SW-T56	T56	<i>Sapium sebiferum</i>	烏白	6	200	4	Fair	Fair	Low	Low	Fell	with creeper
70102/C4/301	SW-T57	T57	<i>Cleistocalyx operculata</i>	水翁	6	200	4	Fair	Poor	Low	Low	Fell	
70102/C4/302	SW-T58	T58	<i>Macaranga tanarius</i>	血桐	6	200	4	Fair	Fair	Low	Low	Retain	
70102/C4/302	SW-T59	T59	<i>Ficus variegata</i>	青果榕	3	160	2	Fair	Fair	Low	Low	Retain	
70102/C4/302	SW-T60	T60	<i>Ficus variegata</i>	青果榕	3	140	2	Fair	Fair	Low	Low	Retain	
70102/C4/302	SW-T61	T61	<i>Spathodea campanulata</i>	火焰木	6	200	4	Fair	Fair	Low	Low	Retain	
70102/C4/302	SW-T62	T62	<i>Euphoria longan</i>	龍眼	4	140	3	Good	Fair	Low	Low	Retain	
70102/C4/302	SW-T63	T63	<i>Leucaena leucocephala</i>	銀合歡	8	160	3	Fair	Fair	Low	Low	Retain	
70102/C4/302	SW-T64	T64	<i>Leucaena leucocephala</i>	銀合歡	8	140	3	Fair	Fair	Low	Low	Retain	
70102/C4/302	SW-T65	T65	<i>Leucaena leucocephala</i>	銀合歡	8	140	3	Fair	Poor	Low	Low	Retain	Leaning
70102/C4/302	SW-T66	T66	<i>Spathodea campanulata</i>	火焰木	10	300	3	Good	Good	Low	Medium	Retain	
70102/C4/302	SW-T67	T67	<i>Melaleuca leucadendron</i>	白千層	10	300	3	Fair	Fair	Low	Low	Retain	
70102/C4/302	SW-T68	T68	<i>Melaleuca leucadendron</i>	白千層	10	200	3	Fair	Fair	Low	Low	Retain	
70102/C4/302	SW-T69	T69	<i>Melaleuca leucadendron</i>	白千層	10	200	3	Fair	Fair	Low	Low	Retain	
70102/C4/302	SW-T70	T70	<i>Melaleuca leucadendron</i>	白千層	10	200	3	Fair	Fair	Low	Low	Retain	
70102/C4/302	SW-T71	T71	<i>Melaleuca leucadendron</i>	白千層	10	300	3	Fair	Fair	Low	Low	Retain	
70102/C4/302	SW-T72	T72	<i>Melaleuca leucadendron</i>	白千層	10	300	3	Fair	Fair	Low	Low	Retain	
70102/C4/302	SW-T73	T73	<i>Melaleuca leucadendron</i>	白千層	10	200	3	Fair	Fair	Low	Low	Retain	
70102/C4/302	SW-T74	T74	<i>Melaleuca leucadendron</i>	白千層	10	240	4	Fair	Poor	Low	Low	Retain	Unbalance crown
70102/C4/302	SW-T75	T75	<i>Melaleuca leucadendron</i>	白千層	5	200	2	Fair	Poor	Low	Low	Retain	Leaning
70102/C4/302	SW-T76	T76	<i>Macaranga tanarius</i>	血桐	5	200	3	Fair	Fair	Low	Low	Retain	
70102/C4/302	SW-T77	T77	<i>Ficus microcarpa</i>	細葉榕	8	300	6	Fair	Fair	Medium	Low	Retain	
70102/C4/302	SW-T78	T78	<i>Bauhinia blakeana</i>	洋紫荊	5	200	4	Fair	Fair	Low	Low	Retain	Trunk leaning
70102/C4/303	SW-T79	T79	<i>Bauhinia blakeana</i>	洋紫荊	5	200	4	Fair	Fair	Low	Low	Retain	
70102/C4/303	SW-T80	T80	<i>Syzygium jambos</i>	蒲桃	4	200	3	Good	Fair	Low	Low	Retain	
70102/C4/303	SW-T81	T81	<i>Casuarina equisetifolia</i>	木麻黃	10	300	3	Fair	Fair	Low	Low	Retain	
70102/C4/303	SW-T82	T82	<i>Casuarina equisetifolia</i>	木麻黃	10	200	3	Fair	Fair	Low	Low	Retain	
70102/C4/303	SW-T83	T83	<i>Casuarina equisetifolia</i>	木麻黃	10	300	4	Fair	Fair	Low	Low	Retain	
70102/C4/303	SW-T84	T84	<i>Casuarina equisetifolia</i>	木麻黃	8	200	3	Fair	Fair	Low	Low	Retain	
70102/C4/303	SW-T85	T85	<i>Casuarina equisetifolia</i>	木麻黃	8	160	3	Fair	Fair	Low	Low	Retain	
70102/C4/303	SW-T86	T86	<i>Casuarina equisetifolia</i>	木麻黃	8	200	3	Fair	Fair	Low	Low	Retain	
70102/C4/303	SW-T87	T87	<i>Bombax malabaricum</i>	木棉	8	200	3	Fair	Fair	Low	Low	Retain	
70102/C4/303	SW-T88	T88	<i>Casuarina equisetifolia</i>	木麻黃	8	160	3	Fair	Fair	Low	Low	Retain	
70102/C4/303	SW-T89	T89	<i>Casuarina equisetifolia</i>	木麻黃	10	200	4	Fair	Fair	Low	Low	Retain	
70102/C4/303	SW-T90	T90	<i>Casuarina equisetifolia</i>	木麻黃	10	300	4	Fair	Fair	Low	Low	Retain	
70102/C4/303	SW-T91	T91	<i>Casuarina equisetifolia</i>	木麻黃	8	200	3	Fair	Fair	Low	Low	Retain	
70102/C4/303	SW-T92	T92	<i>Casuarina equisetifolia</i>	木麻黃	8	160	3	Fair	Poor	Low	Low	Retain	Contored trunk
70102/C4/303	SW-T93	T93	<i>Casuarina equisetifolia</i>	木麻黃	10	200	4	Fair	Fair	Low	Low	Retain	
70102/C4/303	SW-T94	T94	<i>Casuarina equisetifolia</i>	木麻黃	10	300	3	Fair	Fair	Low	Low	Retain	
70102/C4/303	SW-T95	T95	<i>Casuarina equisetifolia</i>	木麻黃	10	200	4	Fair	Fair	Low	Low	Retain	
70102/C4/303	SW-T96	T96	<i>Casuarina equisetifolia</i>	木麻黃	8	200	3	Fair	Fair	Low	Low	Retain	
70102/C4/303	SW-T97	T97	<i>Casuarina equisetifolia</i>	木麻黃	10	200	4	Fair	Fair	Low	Low	Retain	
70102/C4/303	SW-T98	T98	<i>Casuarina equisetifolia</i>	木麻黃	10	200	3	Fair	Fair	Low	Low	Retain	
70102/C4/303	SW-T99	T99	<i>Casuarina equisetifolia</i>	木麻黃	10	200	4	Fair	Fair	Low	Low	Retain	
70102/C4/303	SW-T100	T100	<i>Casuarina equisetifolia</i>	木麻黃	10	300	4	Fair	Fair	Low	Low	Retain	

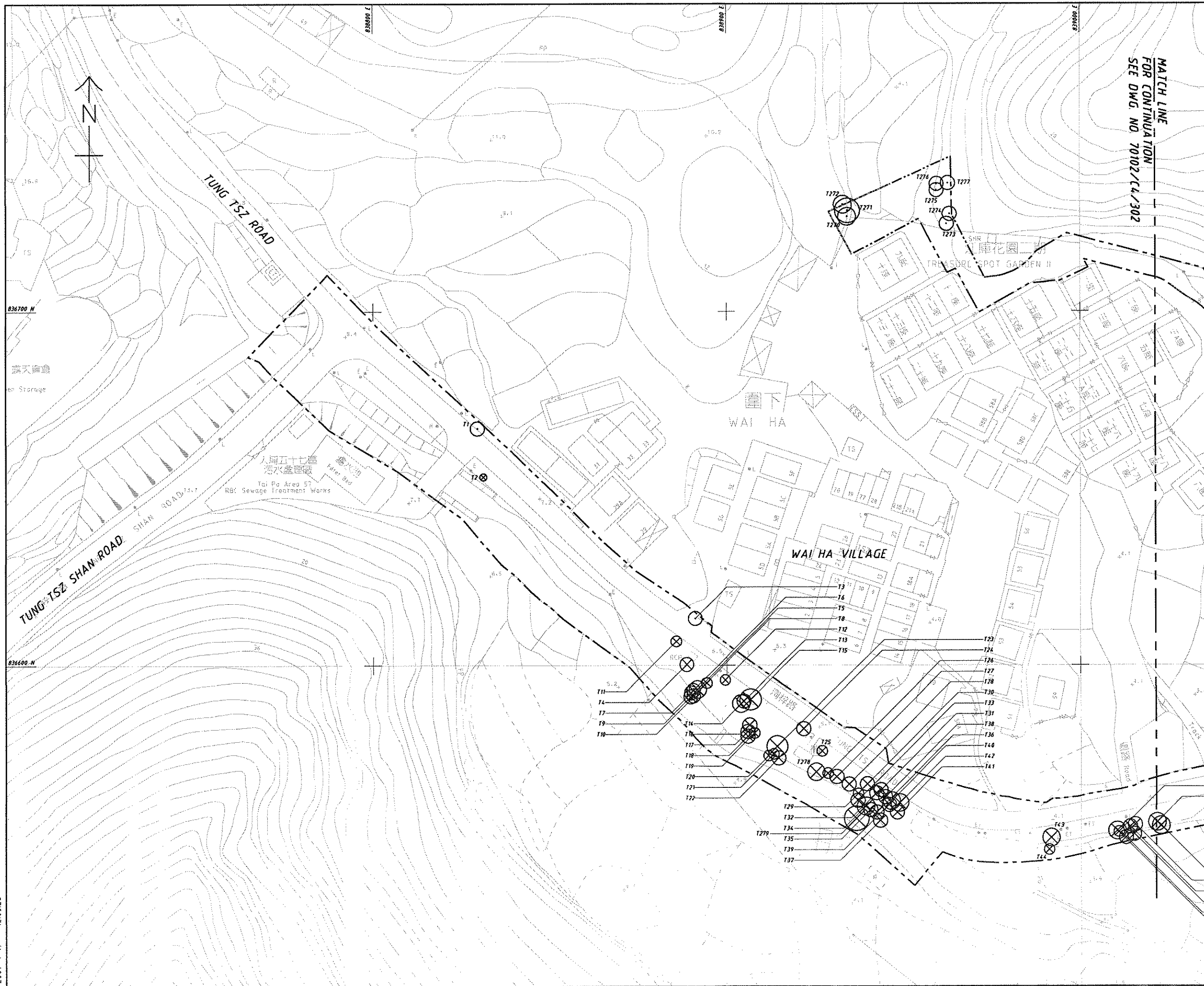
Ref. No.:	TS-SW-1												
Project Title:	Agreement No. CE50/2001 (DS) Drainage Improvement in Sha Tin and Tai Po - Design and Construction												
Location:	Shuen Wan												
Drawing No.	Tree Tag No.	Tree ID#	Botanical Name	Chinese Name	Overall Height (m)	Trunk Diameter (mm)	Average Crown Spread (m)	Condition (Good, fair, Poor, Dead)	Form (Good, Fair, Poor)	Survival of Transplantation (High, Medium, Low)	Amenity Value (High, Medium, Low)	Recommendation (Retain, Transplant, Fell)	Remarks
70102/C4/303	SW-T101	T101	<i>Melaleuca leucadendron</i>	白千層	5	160	3	Fair	Fair	Low	Low	Retain	
70102/C4/303	SW-T102	T102	<i>Casuarina equisetifolia</i>	木麻黃	6	160	4	Fair	Fair	Low	Low	Retain	
70102/C4/303	SW-T103	T103	<i>Casuarina equisetifolia</i>	木麻黃	10	300	4	Fair	Fair	Low	Low	Retain	
70102/C4/303	SW-T104	T104	<i>Casuarina equisetifolia</i>	木麻黃	8	200	3	Fair	Fair	Low	Low	Retain	
70102/C4/303	SW-T105	T105	<i>Melaleuca leucadendron</i>	白千層	4	200	4	Fair	Fair	Low	Low	Retain	
70102/C4/303	SW-T106	T106	<i>Casuarina equisetifolia</i>	木麻黃	10	200	4	Fair	Fair	Low	Low	Retain	
70102/C4/303	SW-T107	T107	<i>Casuarina equisetifolia</i>	木麻黃	10	200	4	Fair	Fair	Low	Low	Retain	
70102/C4/303	SW-T108	T108	<i>Casuarina equisetifolia</i>	木麻黃	10	300	4	Fair	Fair	Low	Low	Retain	
70102/C4/303	SW-T109	T109	<i>Casuarina equisetifolia</i>	木麻黃	10	200	3	Fair	Fair	Low	Low	Retain	
70102/C4/303	SW-T110	T110	<i>Casuarina equisetifolia</i>	木麻黃	8	160	3	Fair	Fair	Low	Low	Retain	
70102/C4/303	SW-T111	T111	<i>Casuarina equisetifolia</i>	木麻黃	10	200	4	Fair	Fair	Low	Low	Retain	
70102/C4/303	SW-T112	T112	<i>Melaleuca leucadendron</i>	白千層	8	300	4	Fair	Fair	Low	Low	Retain	
70102/C4/303	SW-T113	T113	<i>Casuarina equisetifolia</i>	木麻黃	6	140	4	Fair	Fair	Low	Low	Retain	
70102/C4/303	SW-T114	T114	<i>Casuarina equisetifolia</i>	木麻黃	10	200	3	Fair	Fair	Low	Low	Retain	
70102/C4/303	SW-T115	T115	<i>Casuarina equisetifolia</i>	木麻黃	10	300	5	Fair	Fair	Low	Low	Retain	
70102/C4/303	SW-T116	T116	<i>Casuarina equisetifolia</i>	木麻黃	4	300	2	Fair	Fair	Low	Low	Retain	
70102/C4/303	SW-T117	T117	<i>Casuarina equisetifolia</i>	木麻黃	10	300	5	Fair	Fair	Low	Low	Retain	
70102/C4/303	SW-T118	T118	<i>Casuarina equisetifolia</i>	木麻黃	10	300	5	Fair	Fair	Low	Low	Retain	
70102/C4/303	SW-T119	T119	<i>Casuarina equisetifolia</i>	木麻黃	10	300	6	Fair	Fair	Low	Low	Retain	
70102/C4/303	SW-T120	T120	<i>Casuarina equisetifolia</i>	木麻黃	10	300	6	Fair	Fair	Low	Low	Retain	
70102/C4/303	SW-T121	T121	<i>Acacia confusa</i>	相思樹	5	160	4	Fair	Fair	Low	Low	Fell	
70102/C4/303	SW-T122	T122	<i>Schefflera octophylla</i>	鴨腳木	6	200	4	Fair	Fair	Low	Low	Transplant	
70102/C4/303	SW-T123	T123	<i>Delonix regia</i>	鳳凰木	6	160	4	Fair	Fair	Low	Low	Fell	
70102/C4/303	SW-T124	T124	<i>Delonix regia</i>	鳳凰木	6	140	4	Fair	Fair	Low	Low	Retain	
70102/C4/303	SW-T125	T125	<i>Melaleuca leucadendron</i>	白千層	4	140	2	Fair	Fair	Low	Low	Retain	
70102/C4/303	SW-T126	T126	<i>Melaleuca leucadendron</i>	白千層	8	160	4	Fair	Fair	Low	Low	Fell	
70102/C4/303	SW-T127	T127	<i>Melaleuca leucadendron</i>	白千層	8	160	4	Fair	Fair	Low	Low	Fell	
70102/C4/303	SW-T128	T128	<i>Melaleuca leucadendron</i>	白千層	6	140	3	Fair	Fair	Low	Low	Retain	
70102/C4/303	SW-T129	T129	<i>Melaleuca leucadendron</i>	白千層	6	140	3	Fair	Fair	Low	Low	Retain	
70102/C4/303	SW-T130	T130	<i>Melaleuca leucadendron</i>	白千層	6	160	4	Fair	Fair	Low	Low	Retain	
70102/C4/303	SW-T131	T131	<i>Melaleuca leucadendron</i>	白千層	6	140	3	Fair	Fair	Low	Low	Retain	
70102/C4/303	SW-T132	T132	<i>Melaleuca leucadendron</i>	白千層	6	160	3	Fair	Fair	Low	Low	Retain	
70102/C4/303	SW-T133	T133	<i>Melaleuca leucadendron</i>	白千層	6	120	3	Fair	Fair	Low	Low	Retain	
70102/C4/303	SW-T134	T134	<i>Melaleuca leucadendron</i>	白千層	6	140	3	Fair	Fair	Low	Low	Retain	
70102/C4/303	SW-T135	T135	<i>Melaleuca leucadendron</i>	白千層	6	140	3	Fair	Fair	Low	Low	Retain	
70102/C4/303	SW-T136	T136	<i>Melaleuca leucadendron</i>	白千層	6	160	3	Fair	Fair	Low	Low	Retain	
70102/C4/303	SW-T137	T137	<i>Melaleuca leucadendron</i>	白千層	6	160	3	Fair	Fair	Low	Low	Retain	
70102/C4/303	SW-T138	T138	<i>Melaleuca leucadendron</i>	白千層	6	160	3	Fair	Fair	Low	Low	Retain	
70102/C4/303	SW-T139	T139	<i>Melaleuca leucadendron</i>	白千層	6	160	3	Fair	Fair	Low	Low	Retain	
70102/C4/303	SW-T140	T140	<i>Melaleuca leucadendron</i>	白千層	6	160	3	Fair	Fair	Low	Low	Retain	
70102/C4/303	SW-T141	T141	<i>Melaleuca leucadendron</i>	白千層	6	140	3	Fair	Fair	Low	Low	Retain	
70102/C4/303	SW-T142	T142	<i>Melaleuca leucadendron</i>	白千層	6	140	2	Fair	Fair	Low	Low	Retain	
70102/C4/303	SW-T143	T143	<i>Melaleuca leucadendron</i>	白千層	6	140	2	Fair	Fair	Low	Low	Retain	
70102/C4/303	SW-T144	T144	<i>Bombax malabaricum</i>	木棉	6	140	3	Fair	Fair	Low	Low	Retain	
70102/C4/303	SW-T145	T145	<i>Bombax malabaricum</i>	木棉	6	140	3	Fair	Fair	Low	Low	Retain	
70102/C4/303	SW-T146	T146	<i>Bombax malabaricum</i>	木棉	6	160	3	Fair	Fair	Low	Low	Retain	
70102/C4/303	SW-T147	T147	<i>Bombax malabaricum</i>	木棉	6	140	3	Fair	Fair	Low	Low	Retain	
70102/C4/303	SW-T148	T148	<i>Bombax malabaricum</i>	木棉	6	140	3	Fair	Fair	Low	Low	Retain	
70102/C4/303	SW-T149	T149	<i>Bombax malabaricum</i>	木棉	6	140	3	Fair	Fair	Low	Low	Retain	
70102/C4/303	SW-T150	T150	<i>Bombax malabaricum</i>	木棉	6	140	3	Fair	Fair	Low	Low	Transplant	

Ref. No.:	TS-SW-1												
Project Title:	Agreement No. CE50/2001 (DS) Drainage Improvement in Sha Tin and Tai Po - Design and Construction												
Location:	Shuen Wan												
Drawing No.	Tree Tag No.	Tree ID#	Botanical Name	Chinese Name	Overall Height (m)	Trunk Diameter (mm)	Average Crown Spread (m)	Condition (Good, fair, Poor, Dead)	Form (Good, Fair, Poor)	Survival of Transplantation (High, Medium, Low)	Amenity Value (High, Medium, Low)	Recommendation (Retain, Transplant, Fell)	Remarks
70102/C4/303	SW-T151	T151	<i>Bombax malabaricum</i>	木棉	6	140	3	Fair	Fair	Low	Low	Transplant	
70102/C4/303	SW-T152	T152	<i>Bombax malabaricum</i>	木棉	6	140	3	Fair	Fair	Low	Low	Transplant	
70102/C4/303	SW-T153	T153	<i>Bombax malabaricum</i>	木棉	6	140	3	Fair	Fair	Low	Low	Transplant	
70102/C4/303	SW-T154	T154	<i>Bombax malabaricum</i>	木棉	6	140	3	Fair	Fair	Low	Low	Transplant	
70102/C4/303	SW-T155	T155	<i>Bombax malabaricum</i>	木棉	6	140	3	Fair	Fair	Low	Low	Transplant	
70102/C4/303	SW-T156	T156	<i>Bombax malabaricum</i>	木棉	6	140	3	Fair	Fair	Low	Low	Transplant	
70102/C4/303	SW-T157	T157	<i>Bombax malabaricum</i>	木棉	6	140	3	Fair	Fair	Low	Low	Transplant	
70102/C4/303	SW-T158	T158	<i>Bombax malabaricum</i>	木棉	6	140	3	Fair	Fair	Low	Low	Transplant	
70102/C4/303	SW-T159	T159	<i>Bombax malabaricum</i>	木棉	6	140	3	Fair	Fair	Low	Low	Transplant	
70102/C4/303	SW-T160	T160	<i>Bombax malabaricum</i>	木棉	6	140	3	Fair	Fair	Low	Low	Transplant	
70102/C4/303	SW-T161	T161	<i>Bombax malabaricum</i>	木棉	6	140	3	Fair	Fair	Low	Low	Transplant	
70102/C4/303	SW-T162	T162	<i>Bombax malabaricum</i>	木棉	6	160	3	Fair	Fair	Low	Low	Transplant	
70102/C4/303	SW-T163	T163	<i>Bombax malabaricum</i>	木棉	6	160	3	Fair	Fair	Low	Low	Transplant	
70102/C4/303	SW-T164	T164	<i>Bombax malabaricum</i>	木棉	8	300	4	Fair	Poor	Low	Low	Transplant	Twist trunk
70102/C4/303	SW-T165	T165	<i>Melaleuca leucadendron</i>	白千層	6	160	3	Fair	Fair	Low	Low	Fell	
70102/C4/303	SW-T166	T166	<i>Melaleuca leucadendron</i>	白千層	6	200	3	Fair	Fair	Low	Low	Fell	
70102/C4/303	SW-T167	T167	<i>Albizia lebbek</i>	大葉合歡	8	300	4	Fair	Fair	Low	Low	Fell	
70102/C4/303	SW-T168	T168	<i>Melaleuca leucadendron</i>	白千層	8	200	3	Fair	Fair	Low	Low	Fell	
70102/C4/303	SW-T169	T169	<i>Melaleuca leucadendron</i>	白千層	6	200	3	Fair	Fair	Low	Low	Fell	
70102/C4/303	SW-T170	T170	<i>Melaleuca leucadendron</i>	白千層	8	300	3	Fair	Fair	Low	Low	Fell	
70102/C4/303	SW-T171	T171	<i>Melaleuca leucadendron</i>	白千層	6	200	3	Fair	Fair	Low	Low	Retain	
70102/C4/303	SW-T172	T172	<i>Cassia siamea</i>	臘腸樹(鐵刀木)	6	200	4	Fair	Fair	Low	Low	Retain	
70102/C4/303	SW-T173	T173	<i>Cassia siamea</i>	臘腸樹(鐵刀木)	6	200	4	Fair	Poor	Low	Low	Retain	
70102/C4/303	SW-T174	T174	<i>Melaleuca leucadendron</i>	白千層	8	400	4	Fair	Fair	Low	Low	Retain	Twist trunk
70102/C4/303	SW-T175	T175	<i>Melaleuca leucadendron</i>	白千層	8	400	4	Fair	Fair	Low	Low	Retain	
70102/C4/303	SW-T176	T176	<i>Ficus superba var. japonica</i>	黃葛樹	8	400	5	Good	Poor	Low	Low	Fell	Muti-stem,Growing on embankment
70102/C4/303	SW-T177	T177	<i>Albizia lebbek</i>	大葉合歡	6	200	5	Fair	Fair	Low	Low	Fell	
70102/C4/304	SW-T178	T178	<i>Ficus superba var. japonica</i>	黃葛樹	6	400	6	Poor	Poor	Low	Low	Fell	Muti-stem,Growing on embankment
70102/C4/304	SW-T179	T179	<i>Celtis sinensis</i>	朴樹	6	200	5	Fair	Poor	Low	Low	Fell	Growing on embankment
70102/C4/304	SW-T180	T180	<i>Celtis sinensis</i>	朴樹	5	200	5	Fair	Poor	Low	Low	Fell	
70102/C4/304	SW-T181	T181	<i>Macaranga tanarius</i>	血桐	5	200	5	Good	Fair	Low	Low	Fell	
70102/C4/304	SW-T182	T182	<i>Ficus microcarpa</i>	細葉榕	6	200	4	Fair	Fair	Low	Low	Transplant	
70102/C4/304	SW-T183	T183	<i>Bombax malabaricum</i>	木棉	6	200	4	Fair	Fair	Low	Low	Transplant	
70102/C4/304	SW-T184	T184	<i>Bombax malabaricum</i>	木棉	6	200	4	Fair	Fair	Low	Low	Transplant	
70102/C4/304	SW-T185	T185	<i>Duranta repens</i>	黃金露花	5	200	5	Fair	Poor	Low	Low	Retain	
70102/C4/304	SW-T186	T186	<i>Hibiscus tiliaceus</i>	黃槿	5	200	5	Poor	Poor	Low	Low	Retain	
70102/C4/304	SW-T187	T187	<i>Albizia lebbek</i>	大葉合歡	6	200	4	Poor	Poor	Low	Low	Retain	
70102/C4/304	SW-T188	T188	<i>Peltophorum pterocarpum</i>	雙翼豆	8	200	6	Fair	Fair	Low	Low	Fell	
70102/C4/304	SW-T189	T189	<i>Araucaria heterophylla</i>	南洋杉	6	100	4	Good	Good	Low	Low	Retain	
70102/C4/304	SW-T190	T190	<i>Ficus benjamina</i>	垂葉榕	6	100	4	Fair	Poor	Low	Low	Retain	Muti-trunk
70102/C4/304	SW-T191	T191	<i>Celtis sinensis</i>	朴樹	8	200	5	Good	Poor	Low	Low	Retain	Contored trunk
70102/C4/304	SW-T192	T192	<i>Ficus elastica</i>	印度橡樹	10	1000	8	Good	Poor	Low	Low	Fell	Mature
70102/C4/304	SW-T193	T193	<i>Macaranga tanarius</i>	血桐	6	200	5	Fair	Fair	Low	Low	Retain	
70102/C4/304	SW-T194	T194	<i>Euphoria longan</i>	龍眼	8	200	5	Fair	Poor	Low	Low	Retain	Leaning
70102/C4/304	SW-T195	T195	<i>Macaranga tanarius</i>	血桐	6	100	4	Poor	Poor	Low	Low	Retain	
70102/C4/304	SW-T196	T196	<i>Ficus hispida</i>	對葉榕	6	100	4	Poor	Poor	Low	Low	Retain	
70102/C4/304	SW-T197	T197	<i>Araucaria heterophylla</i>	南洋杉	6	100	4	Fair	Fair	Low	Low	Retain	
70102/C4/304	SW-T198	T198	<i>Macaranga tanarius</i>	血桐	6	200	4	Poor	Poor	Low	Low	Retain	
70102/C4/304	SW-T199	T199	<i>Ficus hispida</i>	對葉榕	6	100	4	Poor	Poor	Low	Low	Retain	Forked
70102/C4/304	SW-T200	T200	<i>Celtis sinensis</i>	朴樹	6	200	4	Fair	Poor	Low	Low	Retain	Contored trunk



Ref. No.:	TS-SW-1												
Project Title:	Agreement No. CE50/2001 (DS) Drainage Improvement in Sha Tin and Tai Po - Design and Construction												
Location:	Shuen Wan												
Drawing No.	Tree Tag No.	Tree ID#	Botanical Name	Chinese Name	Overall Height (m)	Trunk Diameter (mm)	Average Crown Spread (m)	Condition (Good, fair, Poor, Dead)	Form (Good, Fair, Poor)	Survival of Transplantation (High, Medium, Low)	Amenity Value (High, Medium, Low)	Recommendation (Retain, Transplant, Fell)	Remarks
70102/C4/303	SW-T201	T201	<i>Albizia lebbek</i>	大葉合歡	6	300	4	Fair	Poor	Low	Low	Retain	
70102/C4/303	SW-T202	T202	<i>Macaranga tanarius</i>	血桐	4	100	3	Poor	Poor	Low	Low	Retain	Leaning
70102/C4/303	SW-T203	T203	<i>Macaranga tanarius</i>	血桐	4	300	3	Fair	Poor	Low	Low	Retain	Leaning trunk
70102/C4/303	SW-T204	T204	<i>Bridelia tomentosa</i>	土密樹	4	100	3	Fair	Poor	Low	Low	Retain	
70102/C4/303	SW-T205	T205	<i>Celtis sinensis</i>	朴樹	5	200	4	Fair	Poor	Low	Low	Retain	Twist trunk
70102/C4/303	SW-T206	T206	<i>Celtis sinensis</i>	朴樹	4	100	3	Fair	Fair	Low	Low	Retain	
70102/C4/303	SW-T207	T207	<i>Choerospondias axillaris</i>	酸棗	5	140	4	Fair	Poor	Low	Low	Retain	Contored trunk
70102/C4/303	SW-T208	T208	<i>Albizia lebbek</i>	大葉合歡	6	400	4	Fair	Poor	Low	Low	Retain	Leaning
70102/C4/303	SW-T209	T209	<i>Celtis sinensis</i>	朴樹	5	300	4	Fair	Fair	Low	Low	Retain	
70102/C4/303	SW-T210	T210	<i>Celtis sinensis</i>	朴樹	5	200	4	Fair	Fair	Low	Low	Retain	
70102/C4/303	SW-T211	T211	<i>Bridelia tomentosa</i>	土密樹	5	100	4	Fair	Poor	Low	Low	Retain	Muti-stem
70102/C4/303	SW-T212	T212	<i>Celtis sinensis</i>	朴樹	5	140	4	Fair	Fair	Low	Low	Retain	
70102/C4/303	SW-T213	T213	<i>Celtis sinensis</i>	朴樹	4	100	3	Fair	Fair	Low	Low	Retain	
70102/C4/303	SW-T214	T214	<i>Celtis sinensis</i>	朴樹	4	140	3	Fair	Fair	Low	Low	Retain	
70102/C4/303	SW-T215	T215	<i>Bridelia tomentosa</i>	土密樹	4	140	3	Fair	Poor	Low	Low	Retain	Triple trunk
70102/C4/303	SW-T216	T216	<i>Macaranga tanarius</i>	血桐	4	200	5	Fair	Poor	Low	Low	Retain	
70102/C4/303	SW-T217	T217	<i>Celtis sinensis</i>	朴樹	3	140	3	Fair	Poor	Low	Low	Retain	Contored trunk, leaning
70102/C4/303	SW-T218	T218	<i>Celtis sinensis</i>	朴樹	4	200	3	Fair	Fair	Low	Low	Retain	
70102/C4/303	SW-T219	T219	<i>Celtis sinensis</i>	朴樹	3	140	3	Fair	Fair	Low	Low	Retain	Twist trunk
70102/C4/303	SW-T220	T220	<i>Celtis sinensis</i>	朴樹	4	140	3	Fair	Fair	Low	Low	Retain	
70102/C4/303	SW-T221	T221	<i>Bridelia tomentosa</i>	土密樹	4	140	3	Poor	Poor	Low	Low	Retain	Muti-stem
70102/C4/303	SW-T222	T222	<i>Celtis sinensis</i>	朴樹	4	100	3	Fair	Fair	Low	Low	Retain	
70102/C4/303	SW-T223	T223	<i>Macaranga tanarius</i>	血桐	4	100	4	Poor	Poor	Low	Low	Retain	
70102/C4/303	SW-T224	T224	<i>Macaranga tanarius</i>	血桐	4	100	4	Poor	Poor	Low	Low	Retain	
70102/C4/303	SW-T225	T225	<i>Macaranga tanarius</i>	血桐	4	140	4	Poor	Poor	Low	Low	Retain	
70102/C4/303	SW-T226	T226	<i>Macaranga tanarius</i>	血桐	5	200	5	Poor	Poor	Low	Low	Retain	
70102/C4/303	SW-T227	T227	<i>Macaranga tanarius</i>	血桐	4	100	4	Poor	Poor	Low	Low	Retain	
70102/C4/303	SW-T228	T228	<i>Macaranga tanarius</i>	血桐	4	100	4	Poor	Poor	Low	Low	Retain	Leaning
70102/C4/303	SW-T229	T229	<i>Macaranga tanarius</i>	血桐	4	100	4	Poor	Poor	Low	Low	Retain	Leaning
70102/C4/303	SW-T230	T230	<i>Macaranga tanarius</i>	血桐	4	100	4	Poor	Poor	Low	Low	Retain	
70102/C4/303	SW-T231	T231	<i>Celtis sinensis</i>	朴樹	5	300	4	Fair	Fair	Low	Low	Retain	
70102/C4/303	SW-T232	T232	<i>Celtis sinensis</i>	朴樹	8	300	5	Fair	Poor	Low	Low	Retain	Muti-trunk
70102/C4/303	SW-T233	T233	<i>Celtis sinensis</i>	朴樹	5	200	4	Fair	Fair	Low	Low	Retain	
70102/C4/303	SW-T234	T234	<i>Celtis sinensis</i>	朴樹	4	100	3	Fair	Poor	Low	Low	Retain	Contored trunk
70102/C4/303	SW-T235	T235	<i>Celtis sinensis</i>	朴樹	4	100	3	Fair	Fair	Low	Low	Retain	
70102/C4/303	SW-T236	T236	<i>Celtis sinensis</i>	朴樹	5	200	4	Fair	Fair	Low	Low	Retain	
70102/C4/303	SW-T237	T237	<i>Celtis sinensis</i>	朴樹	3	160	2	Fair	Fair	Low	Low	Retain	
70102/C4/303	SW-T238	T238	<i>Macaranga tanarius</i>	血桐	4	140	4	Poor	Poor	Low	Low	Retain	
70102/C4/303	SW-T239	T239	<i>Macaranga tanarius</i>	血桐	4	140	4	Poor	Poor	Low	Low	Retain	
70102/C4/303	SW-T240	T240	<i>Celtis sinensis</i>	朴樹	4	140	4	Fair	Fair	Low	Low	Retain	
70102/C4/303	SW-T241	T241	<i>Hibiscus tiliaceus</i>	黃槿	4	140	4	Poor	Poor	Low	Low	Retain	
70102/C4/303	SW-T242	T242	<i>Hibiscus tiliaceus</i>	黃槿	4	200	4	Poor	Poor	Low	Low	Retain	
70102/C4/303	SW-T243	T243	<i>Celtis sinensis</i>	朴樹	5	200	4	Fair	Poor	Low	Low	Fell	Leaning trunk
70102/C4/303	SW-T244	T244	<i>Macaranga tanarius</i>	血桐	4	140	4	Fair	Poor	Low	Low	Fell	
70102/C4/303	SW-T245	T245	<i>Celtis sinensis</i>	朴樹	4	100	3	Fair	Poor	Low	Low	Fell	Twist trunk
70102/C4/303	SW-T246	T246	<i>Macaranga tanarius</i>	血桐	4	160	5	Fair	Poor	Low	Low	Fell	Leaning
70102/C4/303	SW-T247	T247	<i>Macaranga tanarius</i>	血桐	5	200	4	Fair	Poor	Low	Low	Fell	Muti-trunk
70102/C4/303	SW-T248	T248	<i>Macaranga tanarius</i>	血桐	4	200	3	Fair	Poor	Low	Low	Fell	Double trunk
70102/C4/303	SW-T249	T249	<i>Celtis sinensis</i>	朴樹	4	100	3	Fair	Poor	Low	Low	Fell	Contored trunk
70102/C4/303	SW-T250	T250	<i>Celtis sinensis</i>	朴樹	4	100	3	Good	Fair	Low	Low	Transplant	

Ref. No.:	TS-SW-1												
Project Title:	Agreement No. CE50/2001 (DS) Drainage Improvement in Sha Tin and Tai Po - Design and Construction												
Location:	Shuen Wan												
Drawing No.	Tree Tag No.	Tree ID#	Botanical Name	Chinese Name	Overall Height (m)	Trunk Diameter (mm)	Average Crown Spread (m)	Condition (Good, fair, Poor, Dead)	Form (Good, Fair, Poor)	Survival of Transplantation (High, Medium, Low)	Amenity Value (High, Medium, Low)	Recommendation (Retain, Transplant, Fell)	Remarks
70102/C4/303	SW-T251	T251	<i>Macaranga tanarius</i>	血桐	4	140	5	Fair	Poor	Low	Low	Fell	Leaning
70102/C4/303	SW-T252	T252	<i>Macaranga tanarius</i>	血桐	4	140	5	Fair	Poor	Low	Low	Fell	Forked, leaning
70102/C4/303	SW-T253	T253	<i>Celtis sinensis</i>	朴樹	5	300	4	Fair	Poor	Low	Low	Fell	Double trunk
70102/C4/303	SW-T254	T254	<i>Celtis sinensis</i>	朴樹	5	200	4	Fair	Fair	Low	Low	Transplant	
70102/C4/303	SW-T255	T255	<i>Celtis sinensis</i>	朴樹	5	200	5	Fair	Poor	Low	Low	Transplant	Double trunk
70102/C4/303	SW-T256	T256	<i>Macaranga tanarius</i>	血桐	4	200	5	Poor	Poor	Low	Low	Fell	Leaning
70102/C4/303	SW-T257	T257	<i>Celtis sinensis</i>	朴樹	6	300	4	Fair	Poor	Low	Low	Retain	Twist trunk
70102/C4/303	SW-T258	T258	<i>Ficus superba var. japonica</i>	黃葛樹	6	300	4	Fair	Poor	Low	Low	Retain	Muti-stem
70102/C4/303	SW-T259	T259	<i>Macaranga tanarius</i>	血桐	5	200	4	Fair	Fair	Low	Low	Fell	
70102/C4/303	SW-T260	T260	<i>Hibiscus tiliaceus</i>	黃槿	5	100	4	Poor	Poor	Low	Low	Retain	
70102/C4/303	SW-T261	T261	<i>Hibiscus tiliaceus</i>	黃槿	5	100	4	Poor	Poor	Low	Low	Retain	
70102/C4/303	SW-T262	T262	<i>Macaranga tanarius</i>	血桐	4	140	4	Poor	Poor	Low	Low	Fell	
70102/C4/303	SW-T263	T263	<i>Macaranga tanarius</i>	血桐	4	140	4	Poor	Poor	Low	Low	Fell	
70102/C4/303	SW-T264	T264	<i>Macaranga tanarius</i>	血桐	4	200	4	Poor	Poor	Low	Low	Fell	
70102/C4/303	SW-T265	T265	<i>Macaranga tanarius</i>	血桐	4	200	4	Poor	Poor	Low	Low	Fell	
70102/C4/303	SW-T266	T266	<i>Macaranga tanarius</i>	血桐	4	200	4	Poor	Poor	Low	Low	Fell	
70102/C4/303	SW-T267	T267	<i>Macaranga tanarius</i>	血桐	4	200	4	Poor	Poor	Low	Low	Fell	Leaning
70102/C4/303	SW-T268	T268	<i>Macaranga tanarius</i>	血桐	4	200	4	Poor	Poor	Low	Low	Fell	Twist trunk
70102/C4/303	SW-T269	T269	<i>Celtis sinensis</i>	朴樹	4	100	3	Poor	Poor	Low	Low	Transplant	
70102/C4/301	SW-T270	T270	<i>Ailanthus fordii</i>	福氏臭椿	8	140	5	Poor	Poor	Low	Low	Retain	Unbalance crown
70102/C4/301	SW-T271	T271	<i>Bischofia polycarpa</i>	重陽木	10	300	7	Fair	Poor	Low	Low	Retain	
70102/C4/301	SW-T272	T272	<i>Euphorbia longan</i>	龍眼	8	140	5	Poor	Poor	Low	Low	Retain	
70102/C4/301	SW-T273	T273	<i>Viburnum odoratissimum</i>	珊瑚樹	6	120	4	Poor	Poor	Low	Low	Retain	Covered by creeper
70102/C4/301	SW-T274	T274	<i>Alangium chinense</i>	八角楓	6	140	4	Poor	Poor	Low	Low	Retain	Leaning
70102/C4/301	SW-T275	T275	<i>Litchi chinensis</i>	荔枝	6	140	4	Poor	Fair	Low	Low	Retain	Covered by creeper
70102/C4/301	SW-T276	T276	<i>Castanopsis fissa</i>	裂豆錐栗	6	140	4	Fair	Poor	Low	Low	Retain	
70102/C4/301	SW-T277	T277	<i>Machilus breviflora</i>	短花楠	6	140	4	Fair	Fair	Low	Low	Retain	with climber
70102/C4/301	SW-T278	T278	<i>Mangifera indica</i>	芒果	5	100	5	Fair	Poor	Low	Low	Fell	Contored trunk
70102/C4/301	SW-T279	T279	<i>Cleistocalyx operculata</i>	水翁	9	200	7	Fair	Poor	Low	Low	Fell	Leaning
70102/C4/303	SW-T280	T280	<i>Celtis sinensis</i>	朴樹	6	100	6	Poor	Poor	Low	Low	Fell	Contored trunk
70102/C4/303	SW-T281	T281	<i>Macaranga tanarius</i>	血桐	6	100	7	Fair	Poor	Low	Low	Fell	Contored trunk, leaning
70102/C4/303	SW-T282	T282	<i>Celtis sinensis</i>	朴樹	6	100	6	Fair	Fair	Low	Low	Fell	
70102/C4/303	SW-T283	T283	<i>Macaranga tanarius</i>	血桐	6	100	7	Fair	Poor	Low	Low	Retain	Unbalance crown
70102/C4/303	SW-T284	T284	<i>Celtis sinensis</i>	朴樹	5	100	6	Fair	Poor	Low	Low	Fell	Contored trunk
70102/C4/303	SW-T285	T285	<i>Macaranga tanarius</i>	血桐	6	100	7	Fair	Poor	Low	Low	Fell	Contored trunk, leaning
70102/C4/303	SW-T286	T286	<i>Macaranga tanarius</i>	血桐	6	100	7	Fair	Fair	Low	Low	Fell	
70102/C4/303	SW-T287	T287	<i>Celtis sinensis</i>	朴樹	5	100	5	Fair	Fair	Low	Low	Fell	
70102/C4/303	SW-T288	T288	<i>Bridelia tomentosa</i>	土密樹	5	100	5	Fair	Fair	Low	Low	Fell	Triple trunk
70102/C4/303	SW-T289	T289	<i>Scolopia chinensis</i>	刺柃	4	100	3	Fair	Fair	Low	Low	Retain	
70102/C4/304	SW-T290	T290	<i>Macaranga tanarius</i>	血桐	6	180	6	Poor	Poor	Low	Low	Retain	Twist trunk, unbalance form

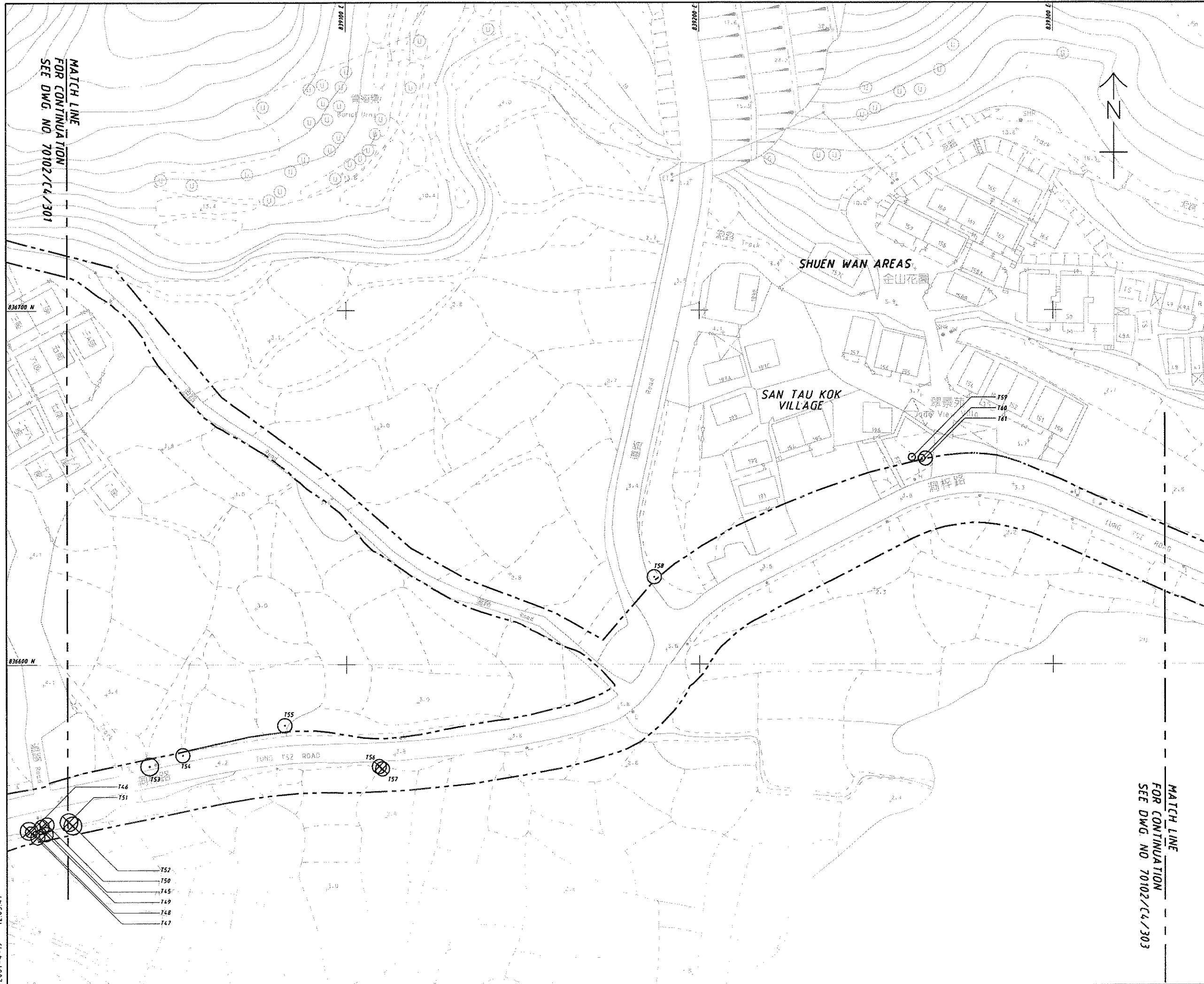


- NOTES:**
1. ALL LEVELS ARE IN METRES ABOVE PRINCIPAL DATUM (MPD).
  2. ALL DIMENSIONS ARE IN MILLIMETRES UNLESS OTHERWISE STATED.
- LEGEND:**
- TREE SURVEY LIMIT
  - T1 TREE TO BE RETAINED
  - ⊗ T2 TREE TO BE FELLED
  - ⊕ T150 TREE TO BE TRANSPLANTED

MATCH LINE FOR CONTINUATION SEE DWG. NO. 70102/C4/302

REV.	DESCRIPTION	DATE	BY	CHECKED
<b>DRAINAGE SERVICES DEPARTMENT, THE GOVERNMENT OF THE HONG KONG SPECIAL ADMINISTRATIVE REGION</b>				
<b>DRAINAGE IMPROVEMENT WORKS IN TAI PO</b>				
<b>TREE SURVEY PLAN</b>				
SHEET 1 OF 4				
<b>MAUNSELL   AECOM</b> Maunsell Consultants Asia Ltd. 茂盛(亞洲)工程顧問有限公司				
DRGNO. 圖紙編號		70102/C4/301		
DESIGNED BY 設計	CPWU	CONTRACT NO. 合約編號	P. OF. APPROVED 批核	
DRAWN BY 繪圖	LDF	STATUS 情況		
SCALE 比例		<b>PRELIMINARY</b>		
DIMENSIONS ARE IN 尺寸單位		METRES		
© COPYRIGHT RESERVED 版權 所 有				

2007-4-19 12:05:28



- NOTES:**
1. ALL LEVELS ARE IN METRES ABOVE PRINCIPAL DATUM (mPD).
  2. ALL DIMENSIONS ARE IN MILLIMETRES UNLESS OTHERWISE STATED.
- LEGEND:**
- TREE SURVEY LIMIT
  - T1 TREE TO BE RETAINED
  - ⊗ T2 TREE TO BE FELLED
  - ⊗ T150 TREE TO BE TRANSPLANTED

DRAINAGE SERVICES DEPARTMENT,  
THE GOVERNMENT OF THE HONG KONG  
SPECIAL ADMINISTRATIVE REGION

DRAINAGE IMPROVEMENT  
WORKS IN TAI PO

TREE SURVEY PLAN

SHEET 2 OF 4

**MAUNSELL | AECOM**  
Maunself Consultants Asia Ltd.  
茂盛(亞洲)工程顧問有限公司

DRG. NO. 70102/C4/302

DESIGNED BY SIC	CPWU	CONTRACT NO. R/P/008	APPROVED BY SIC
DRAWN BY LDF	LD	STATUS PRELIMINARY	
SCALE 1:500			
DIMENSIONS ARE IN METRES			© COPYRIGHT RESERVED 版權所有

2007-4-19 12:05:47



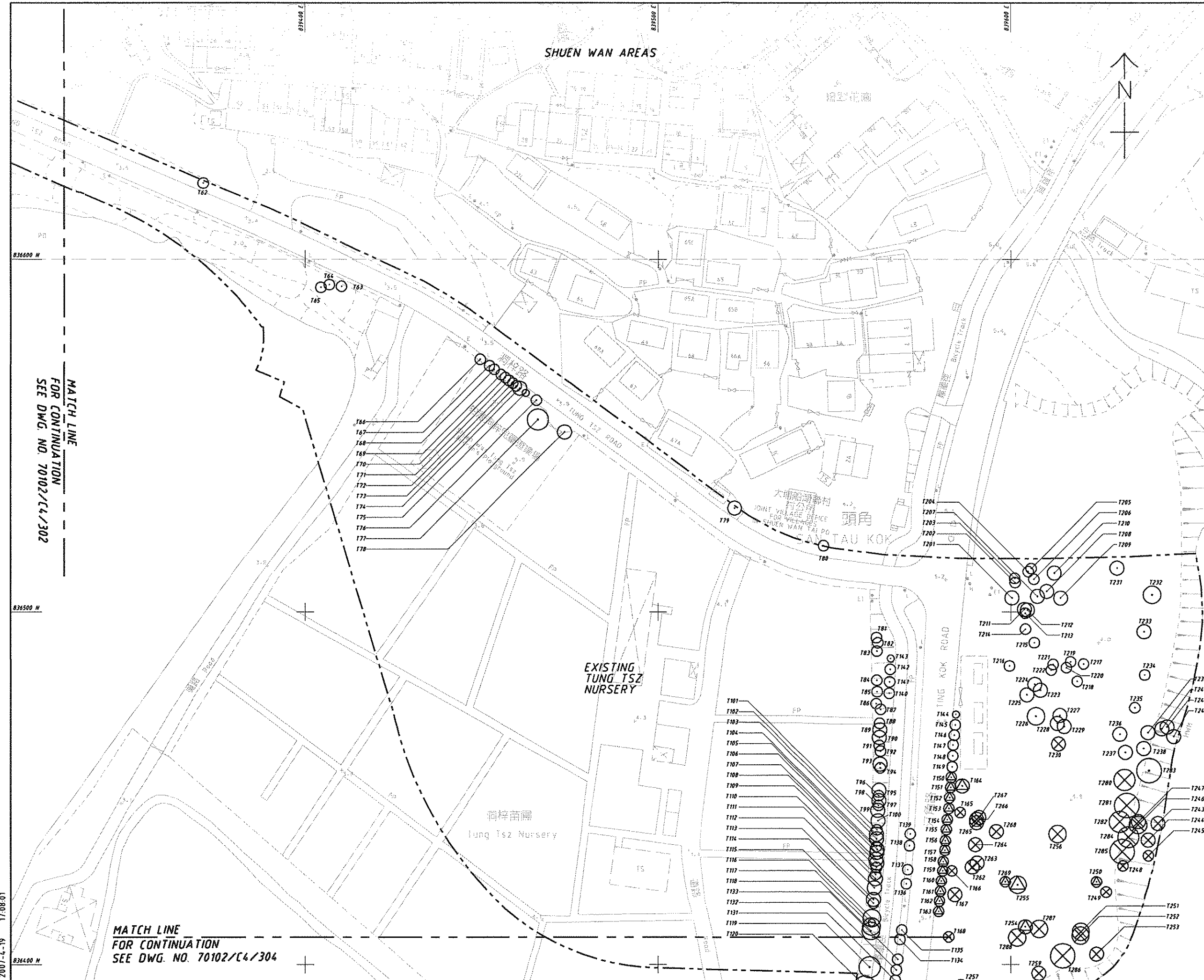
SHUEN WAN AREAS

NOTES:

1. ALL LEVELS ARE IN METRES ABOVE PRINCIPAL DATUM (mPD).
2. ALL DIMENSIONS ARE IN MILLIMETRES UNLESS OTHERWISE STATED.

LEGEND:

- TREE SURVEY LIMIT
- T1 TREE TO BE RETAINED
- ⊗ T2 TREE TO BE FELLED
- ⊕ T150 TREE TO BE TRANSPLANTED



MATCH LINE  
FOR CONTINUATION  
SEE DWG. NO. 70102/C4/302

836500 N


EXISTING  
TUNG TSZ  
NURSERY

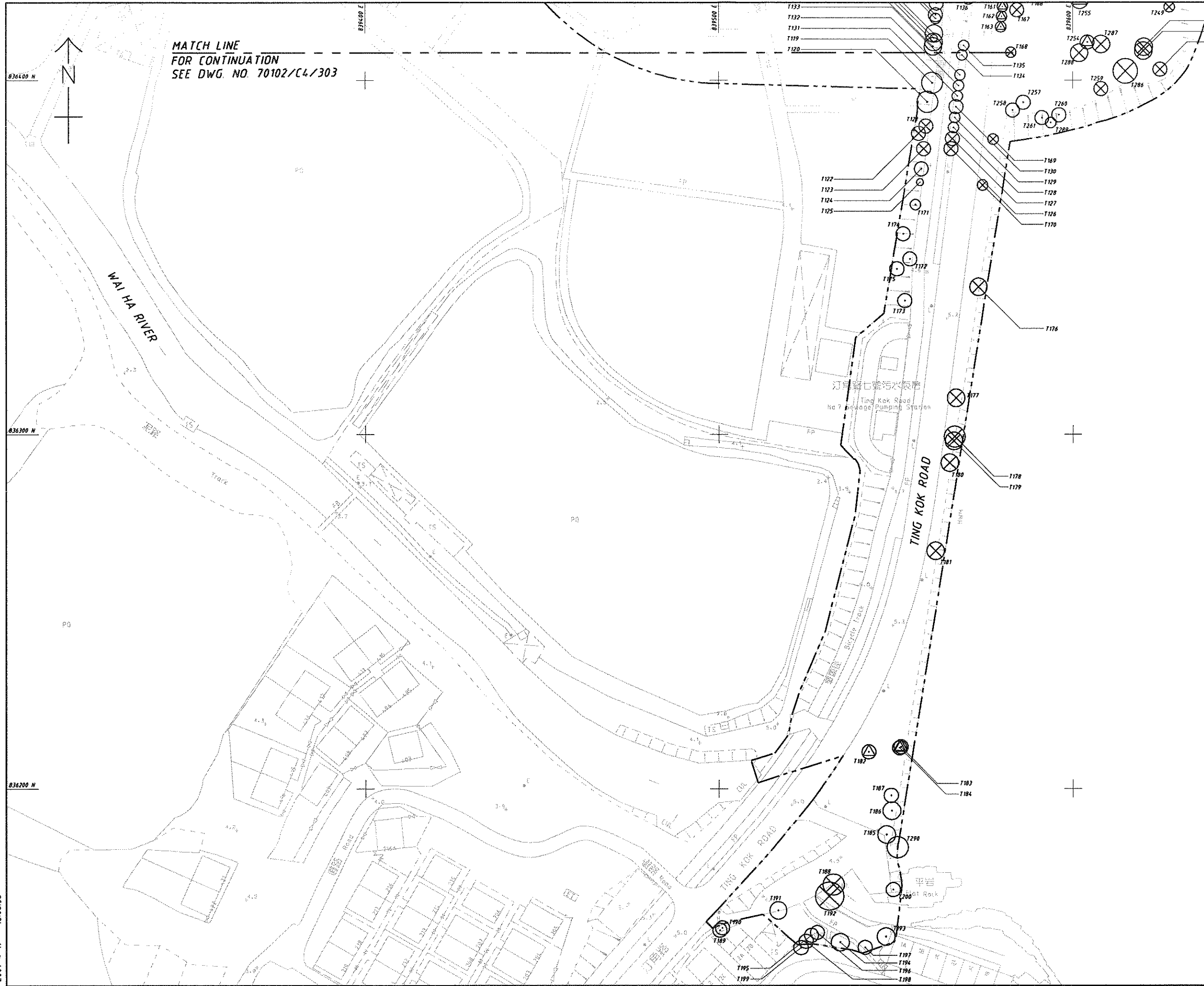
洞梓苗圃  
Tung Tsz Nursery

MATCH LINE  
FOR CONTINUATION  
SEE DWG. NO. 70102/C4/304

2007-4-19 17:08:01

836400 N

REV	DESCRIPTION	BY	CHKD	DATE
 <b>DRAINAGE SERVICES DEPARTMENT, THE GOVERNMENT OF THE HONG KONG SPECIAL ADMINISTRATIVE REGION</b>				
<b>DRAINAGE IMPROVEMENT WORKS IN TAI PO</b>				
<b>TREE SURVEY PLAN</b>				
SHEET 3 OF 4				
<b>MAUNSELL   AECOM</b> Maunsell Consultants Asia Ltd. 茂盛(亞洲)工程顧問有限公司				
DRGNO. 圖紙編號		70102/C4/303		
DESIGNED BY 設計	CPWU	CONTRACT NO. 合約編號	P. BY APPROVED 審核	
DRAWN BY 繪圖	LDP	STATUS 階段	<b>PRELIMINARY</b>	
SCALE 比例 1 : 500		DIMENSIONS ARE IN 尺寸單位 公尺		
NETRES		© COPYRIGHT RESERVED 版權所有		



MATCH LINE  
FOR CONTINUATION  
SEE DWG. NO. 70102/C4/303

**NOTES:**

1. ALL LEVELS ARE IN METRES ABOVE PRINCIPAL DATUM (M.P.D.).
2. ALL DIMENSIONS ARE IN MILLIMETRES UNLESS OTHERWISE STATED.

**LEGEND:**

- TREE SURVEY LIMIT
- T1 TREE TO BE RETAINED
- ⊗ T2 TREE TO BE FELLED
- ⊗ T150 TREE TO BE TRANSPLANTED

NO.	DESCRIPTION	DATE	BY
<b>DRAINAGE SERVICES DEPARTMENT, THE GOVERNMENT OF THE HONG KONG SPECIAL ADMINISTRATIVE REGION</b>			
<b>DRAINAGE IMPROVEMENT WORKS IN TAI PO</b>			
<b>TREE SURVEY PLAN</b>			
SHEET 4 OF 4			
<b>MAUNSELL   AECOM</b> Maunsell Consultants Asia Ltd. 茂盛(亞洲)工程顧問有限公司			
DRG. NO. 圖紙編號	70102/C4/304		
DESIGNED BY 設計	CPWU	CONTRACT NO. 合約編號	BY APPROVED 核准
DRAWN BY 繪圖	LDJ	STATUS 圖則	
SCALE 比例	1 : 500		
DIMENSIONS ARE IN 尺寸單位	METRES		
<b>PRELIMINARY</b> © COPYRIGHT RESERVED 版權所有			

2007-4-19 12:06:36