

LEGEND:

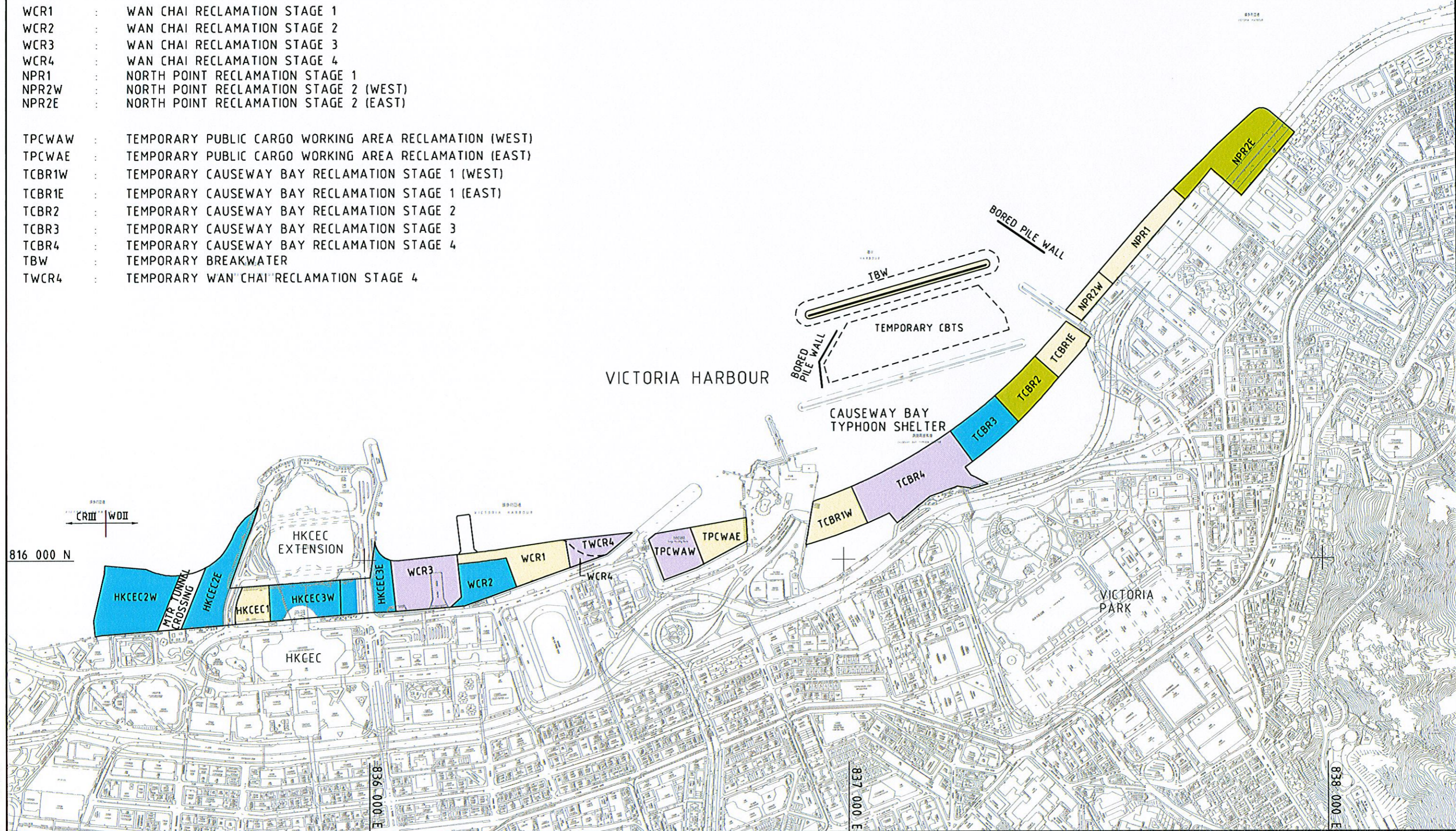
- HKCEC1 : HKCEC RECLAMATION STAGE 1
- HKCEC2W : HKCEC RECLAMATION STAGE 2 (WEST)
- HKCEC2E : HKCEC RECLAMATION STAGE 2 (EAST)
- HKCEC3W : HKCEC RECLAMATION STAGE 3 (WEST)
- HKCEC3E : HKCEC RECLAMATION STAGE 3 (EAST)

- WCR1 : WAN CHAI RECLAMATION STAGE 1
- WCR2 : WAN CHAI RECLAMATION STAGE 2
- WCR3 : WAN CHAI RECLAMATION STAGE 3
- WCR4 : WAN CHAI RECLAMATION STAGE 4
- NPR1 : NORTH POINT RECLAMATION STAGE 1
- NPR2W : NORTH POINT RECLAMATION STAGE 2 (WEST)
- NPR2E : NORTH POINT RECLAMATION STAGE 2 (EAST)

- TPCWAW : TEMPORARY PUBLIC CARGO WORKING AREA RECLAMATION (WEST)
- TPCWAE : TEMPORARY PUBLIC CARGO WORKING AREA RECLAMATION (EAST)
- TCBR1W : TEMPORARY CAUSEWAY BAY RECLAMATION STAGE 1 (WEST)
- TCBR1E : TEMPORARY CAUSEWAY BAY RECLAMATION STAGE 1 (EAST)
- TCBR2 : TEMPORARY CAUSEWAY BAY RECLAMATION STAGE 2
- TCBR3 : TEMPORARY CAUSEWAY BAY RECLAMATION STAGE 3
- TCBR4 : TEMPORARY CAUSEWAY BAY RECLAMATION STAGE 4
- TBW : TEMPORARY BREAKWATER
- TWCR4 : TEMPORARY WAN CHAI RECLAMATION STAGE 4

INDICATIVE RECLAMATION PERIODS:

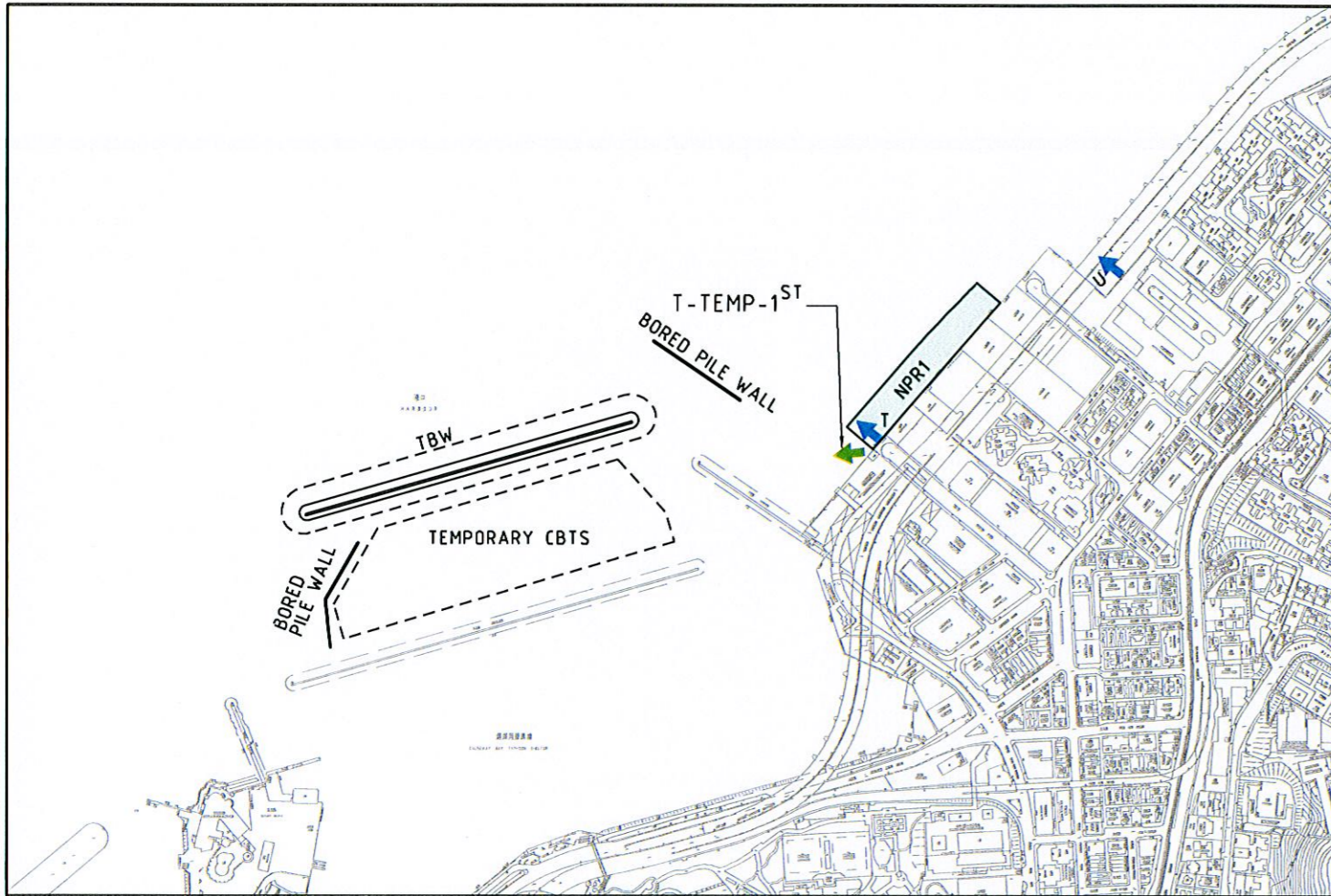
- 2009
- 2010
- 2011
- 2012



WAN CHAI DEVELOPMENT PHASE II - PLANNING AND ENGINEERING REVIEW

RECLAMATION STAGES

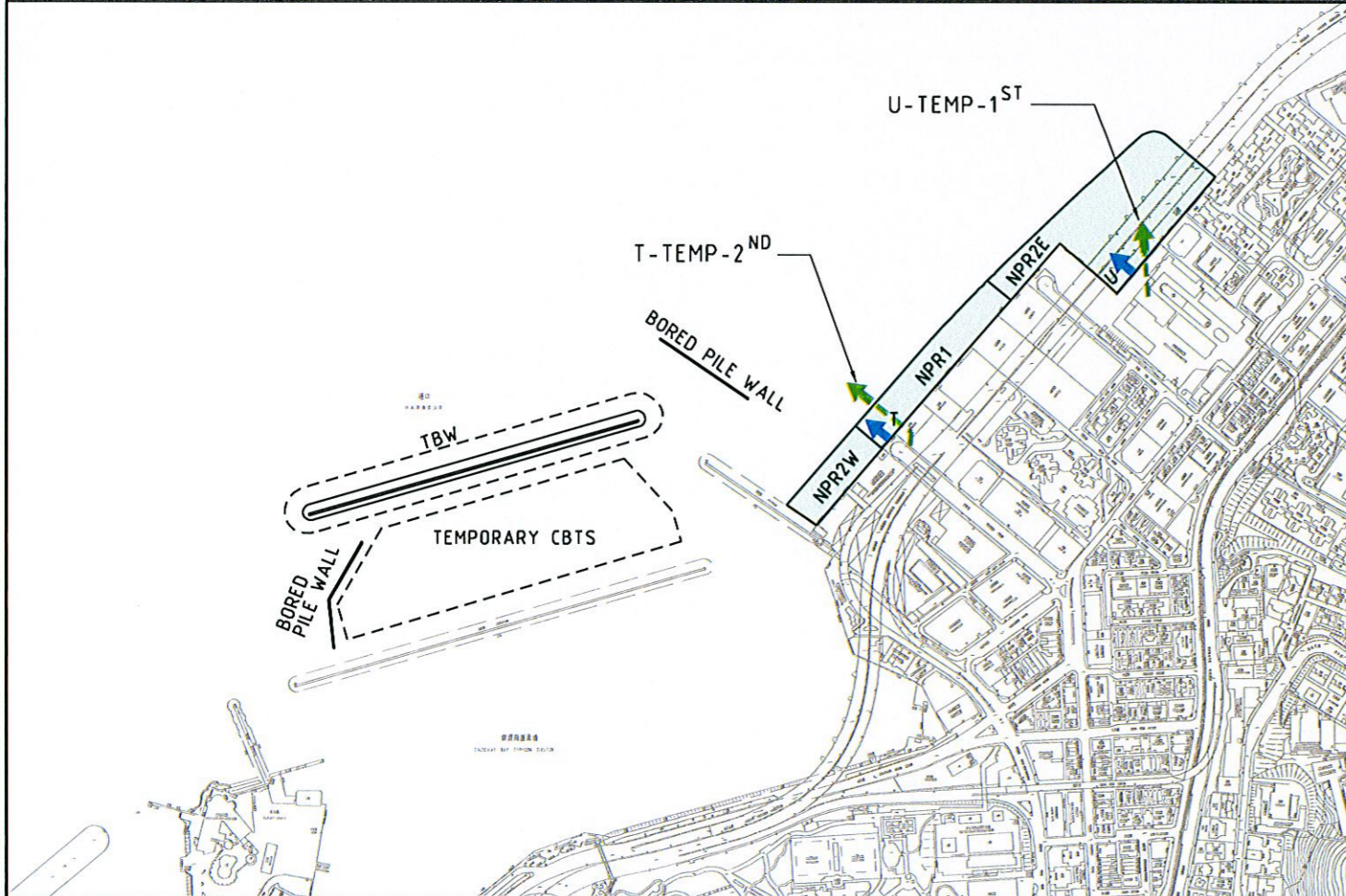
FIGURE 2.7



NORTH POINT RECLAMATION

EARLY 2009 TO MID 2009

- DIVERSION OF OUTFALL T TO TEMPORARY OUTFALL (T-TEMP-1ST) DISCHARGING TO THE WEST OF NPR1
- NPR1 RECLAMATION



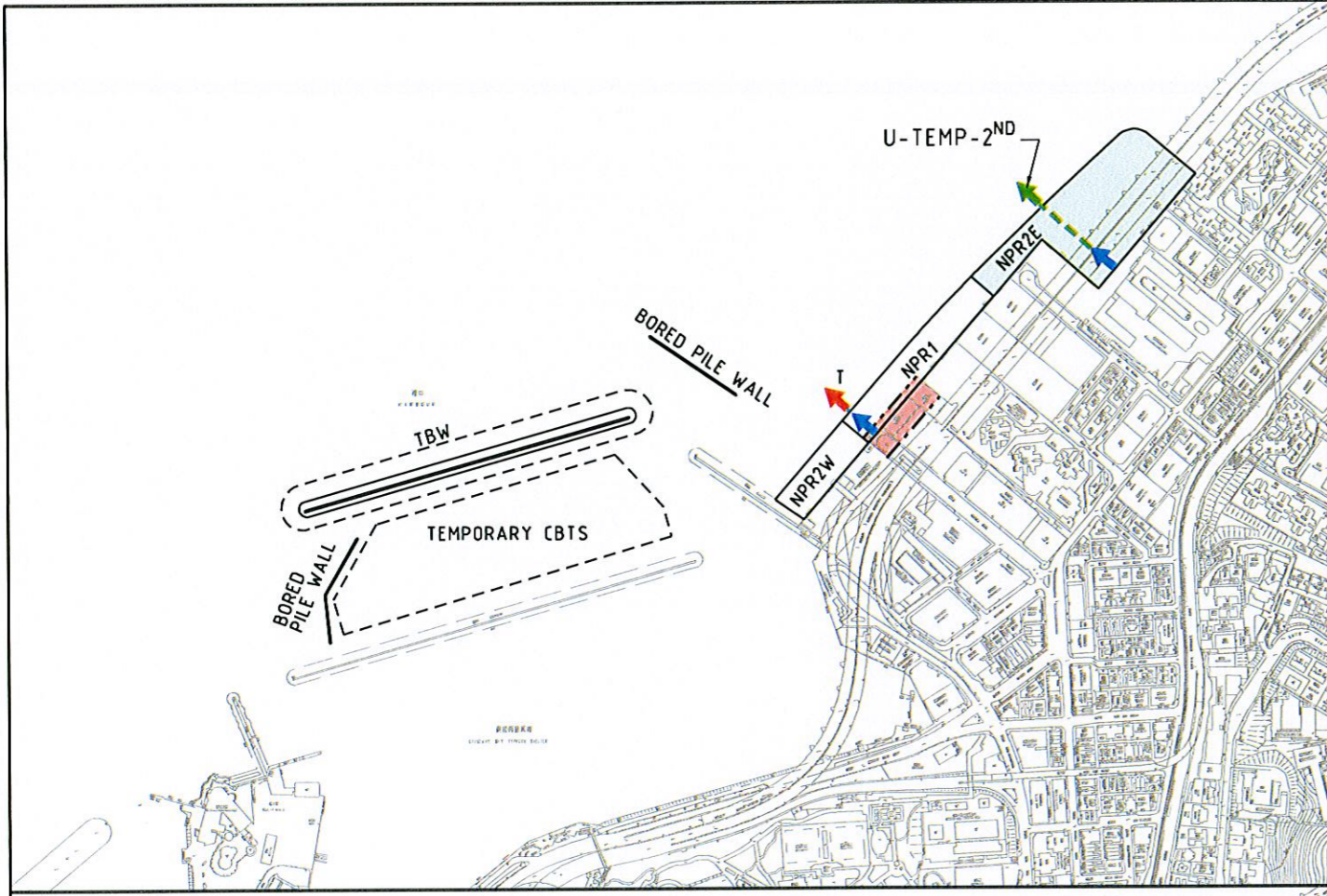
MID 2009 TO LATE 2009

- DIVERSION OF OUTFALL T TO TEMPORARY OUTFALL (T-TEMP-2ND) ON THE RECLAIMED PART OF NPR1
- DIVERSION OF OUTFALL U TO TEMPORARY OUTFALL (U-TEMP-1ST) DISCHARGING TO THE EASTERN HALF OF NPR2E
- NPR1 RECLAMATION
- NPR2W RECLAMATION
- NPR2E RECLAMATION

LEGEND:

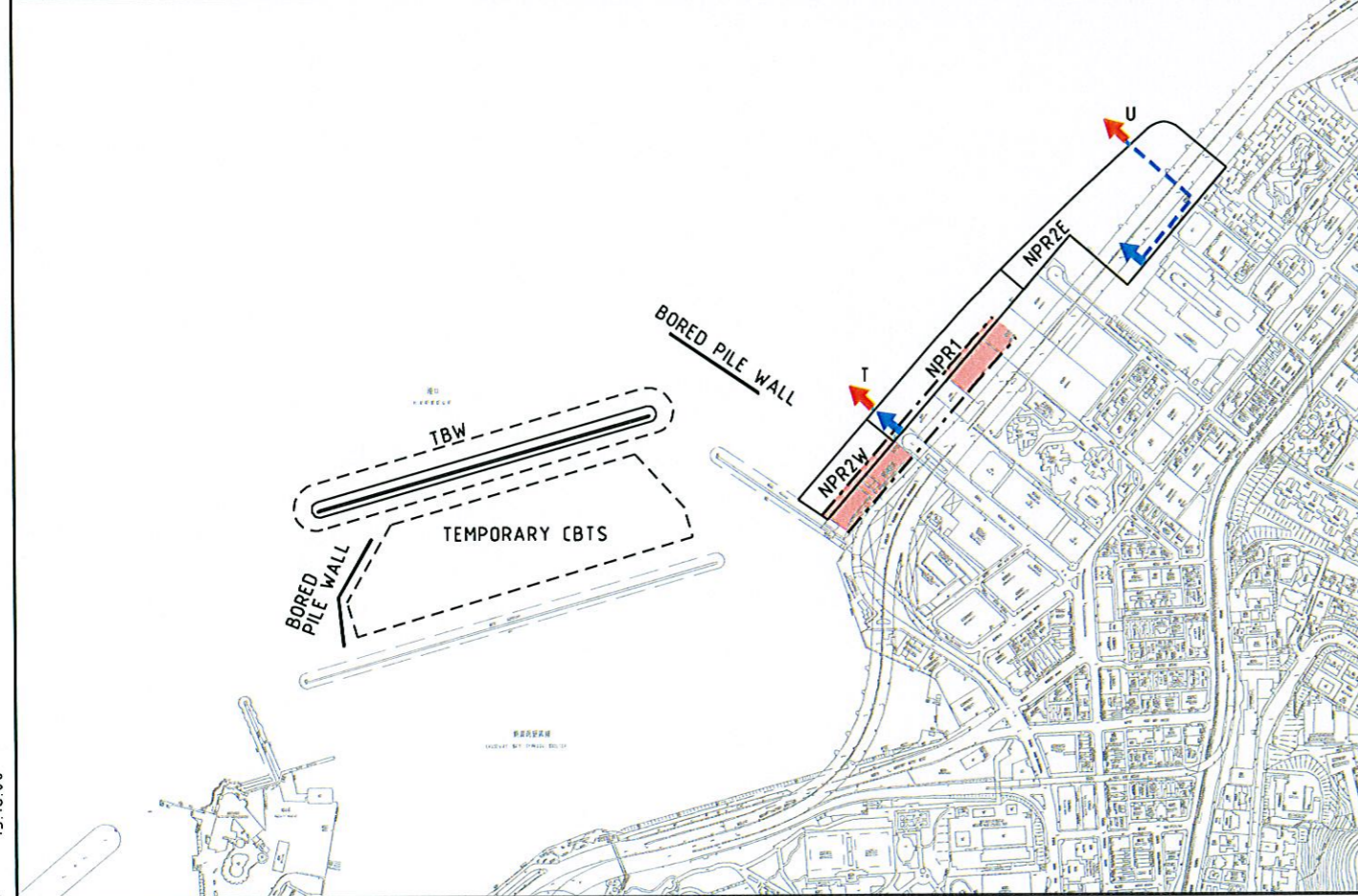
- EXISTING COOLING WATER INTAKE
- EXISTING STORM WATER OUTFALL
- REPROVISIONED COOLING WATER INTAKE
- REPROVISIONED STORM WATER OUTFALL
- TEMPORARY COOLING WATER INTAKE
- NEW COOLING WATER/SALT WATER CHAMBER
- NEW BOX CULVERT
- TEMPORARY DRAINAGE OUTFALL DIVERSION
- DIVERTED COOLING WATER INTAKE PIPELINES (PERMANENT)
- TEMPORARY COOLING WATER PIPELINES
- RECLAMATION IN THE PERIOD
- CWB TUNNEL CONSTRUCTION IN THE PERIOD
- CWB TUNNEL (COMPLETED)

DATE: 2007-8-2 19:04:57



LATE 2009 TO MID 2010

- DIVERSION OF OUTFALL U TO TEMPORARY OUTFALL (U-TEMP-2ND) ON RECLAIMED PART OF NPR2E
- NPR2E RECLAMATION
- CWB TUNNEL CONSTRUCTION AT NPR1
- CONSTRUCTION OF PERMANENT OUTFALL T ABOVE THE COMPLETED CWB TUNNEL



MID 2010 TO LATE 2012

- CONSTRUCTION OF PERMANENT OUTFALL U
- CWB TUNNEL CONSTRUCTION AT NPR1
- CWB TUNNEL CONSTRUCTION AT NP2W

LEGEND:

- EXISTING COOLING WATER INTAKE
- EXISTING STORM WATER OUTFALL
- REPROVISIONED COOLING WATER INTAKE
- REPROVISIONED STORM WATER OUTFALL
- TEMPORARY COOLING WATER INTAKE
- NEW COOLING WATER/SALT WATER CHAMBER
- NEW BOX CULVERT
- TEMPORARY DRAINAGE OUTFALL DIVERSION
- DIVERTED COOLING WATER INTAKE PIPELINES (PERMANENT)
- TEMPORARY COOLING WATER PIPELINES
- RECLAMATION IN THE PERIOD
- CWB TUNNEL CONSTRUCTION IN THE PERIOD
- CWB TUNNEL (COMPLETED)

DATE: 2007-8-3 15:18:00

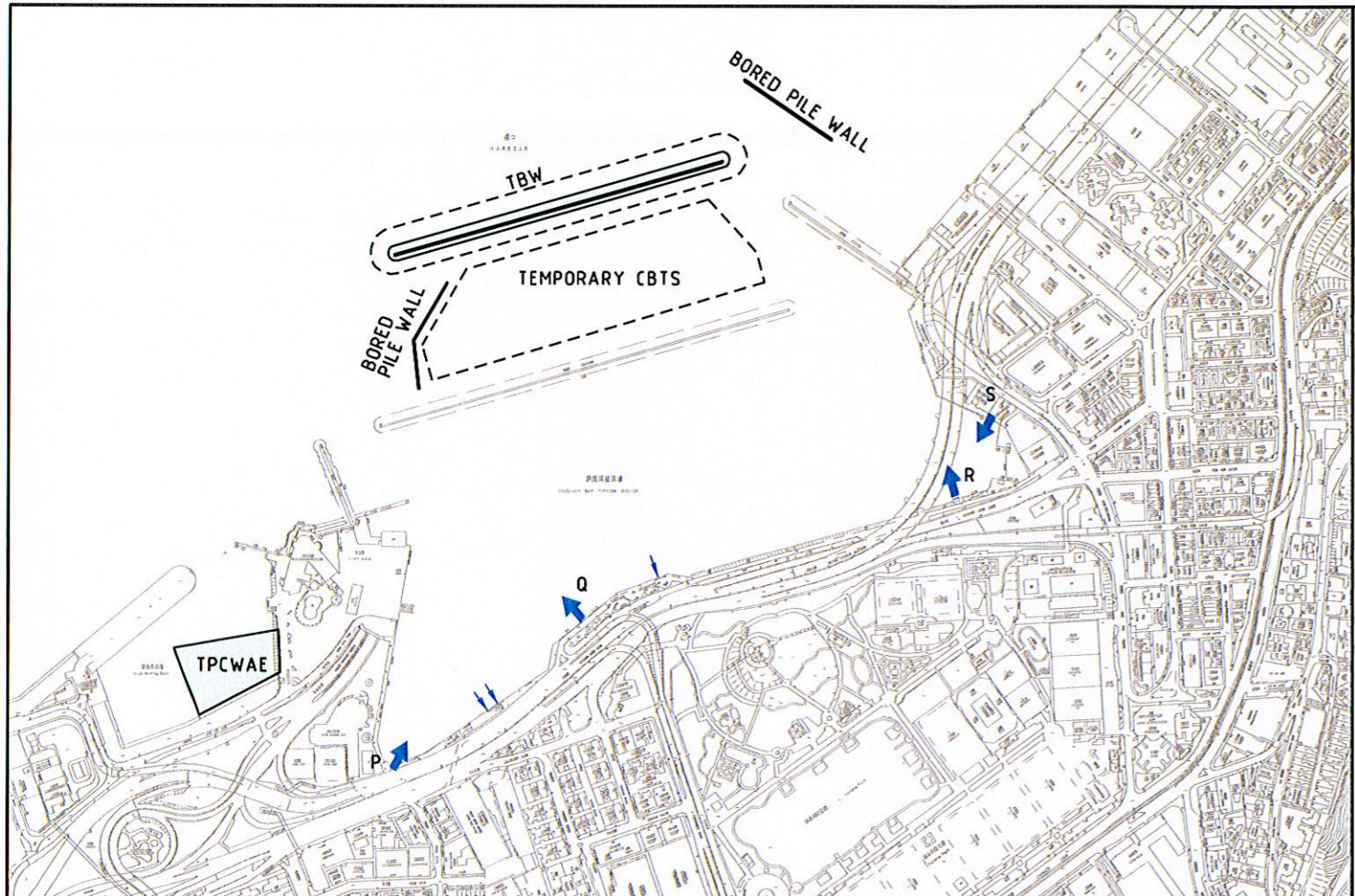
MAUNSELL | AECOM
Maunsell Consultants Asia Ltd

WAN CHAI DEVELOPMENT PHASE II - PLANNING AND ENGINEERING REVIEW

CONSTRUCTION STAGES

FIGURE 2.9

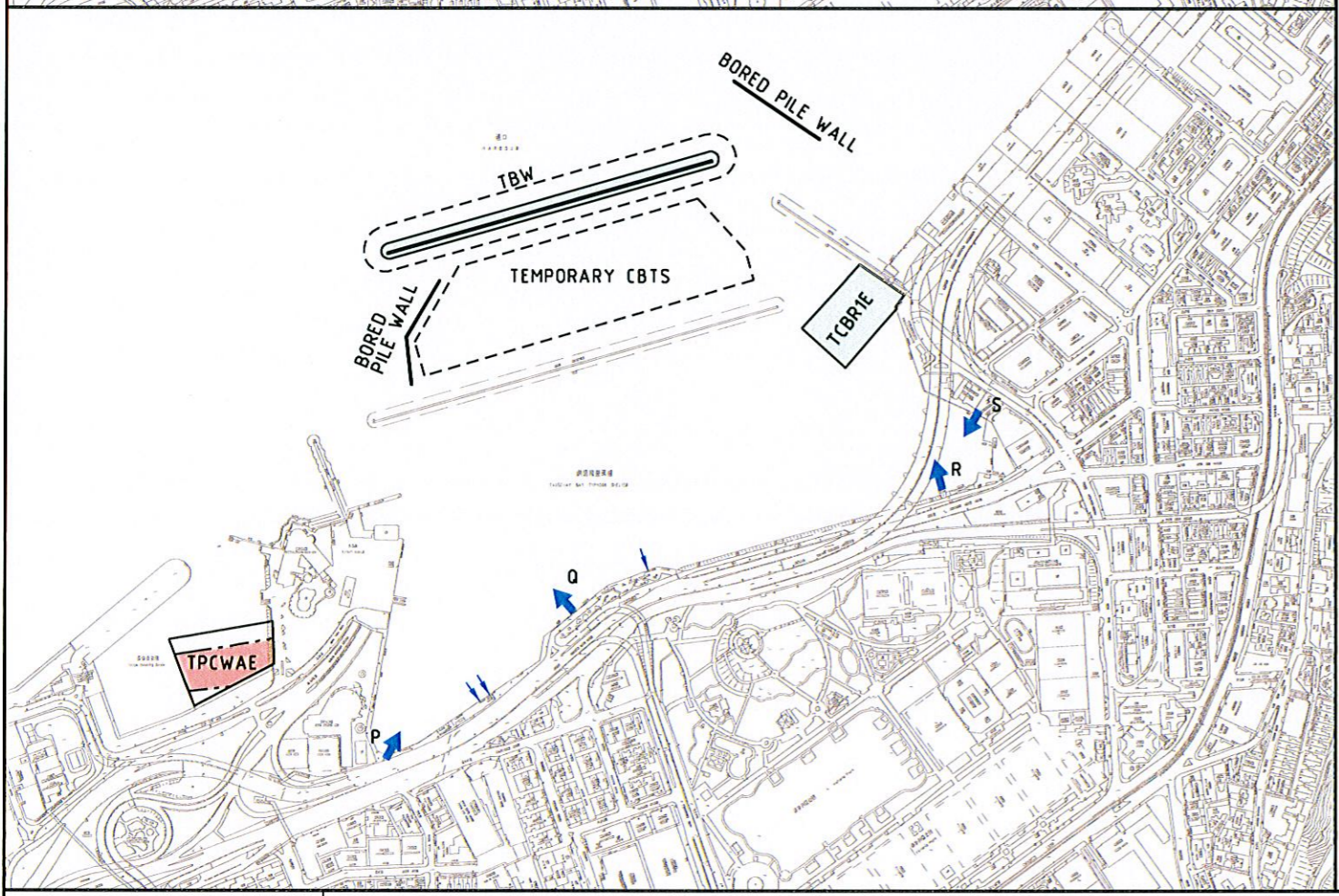
(SHEET 2 OF 12)



TEMPORARY TYPHOON SHELTER
CONSTRUCTION, TEMPORARY CAUSEWAY
BAY RECLAMATION & TEMPORARY PCWA
RECLAMATION

EARLY 2009 TO MID 2009

- TEMPORARY BREAKWATER (TBW) CONSTRUCTION
- BORED PILE WALL CONSTRUCTION
- TPCWAE RECLAMATION



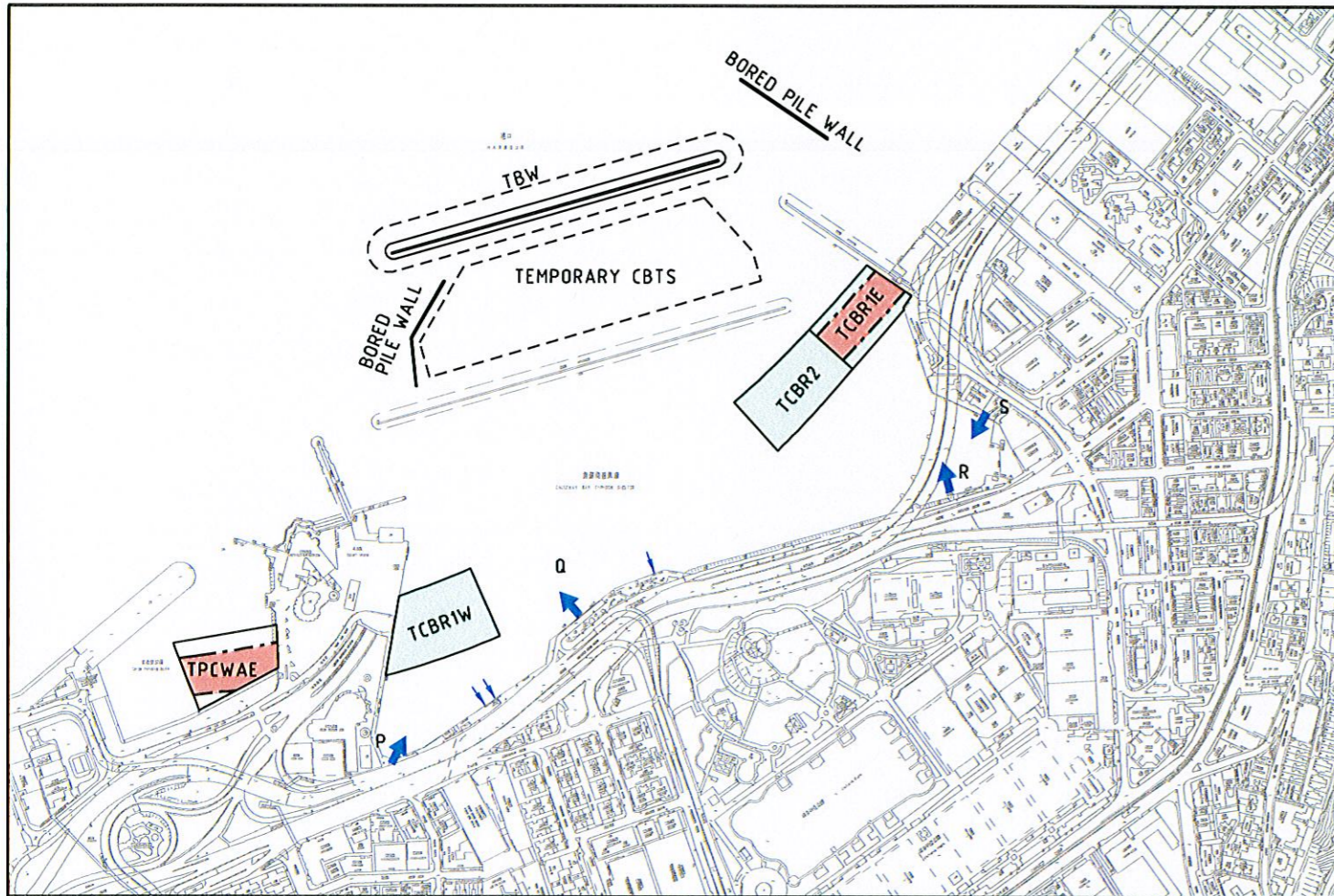
MID 2009 TO LATE 2009

- TBW CONSTRUCTION
- MOVING MOORING TO TEMP CBTS
- CWB TUNNEL CONSTRUCTION AT TPCWAE
- TCBRIE RECLAMATION

LEGEND:

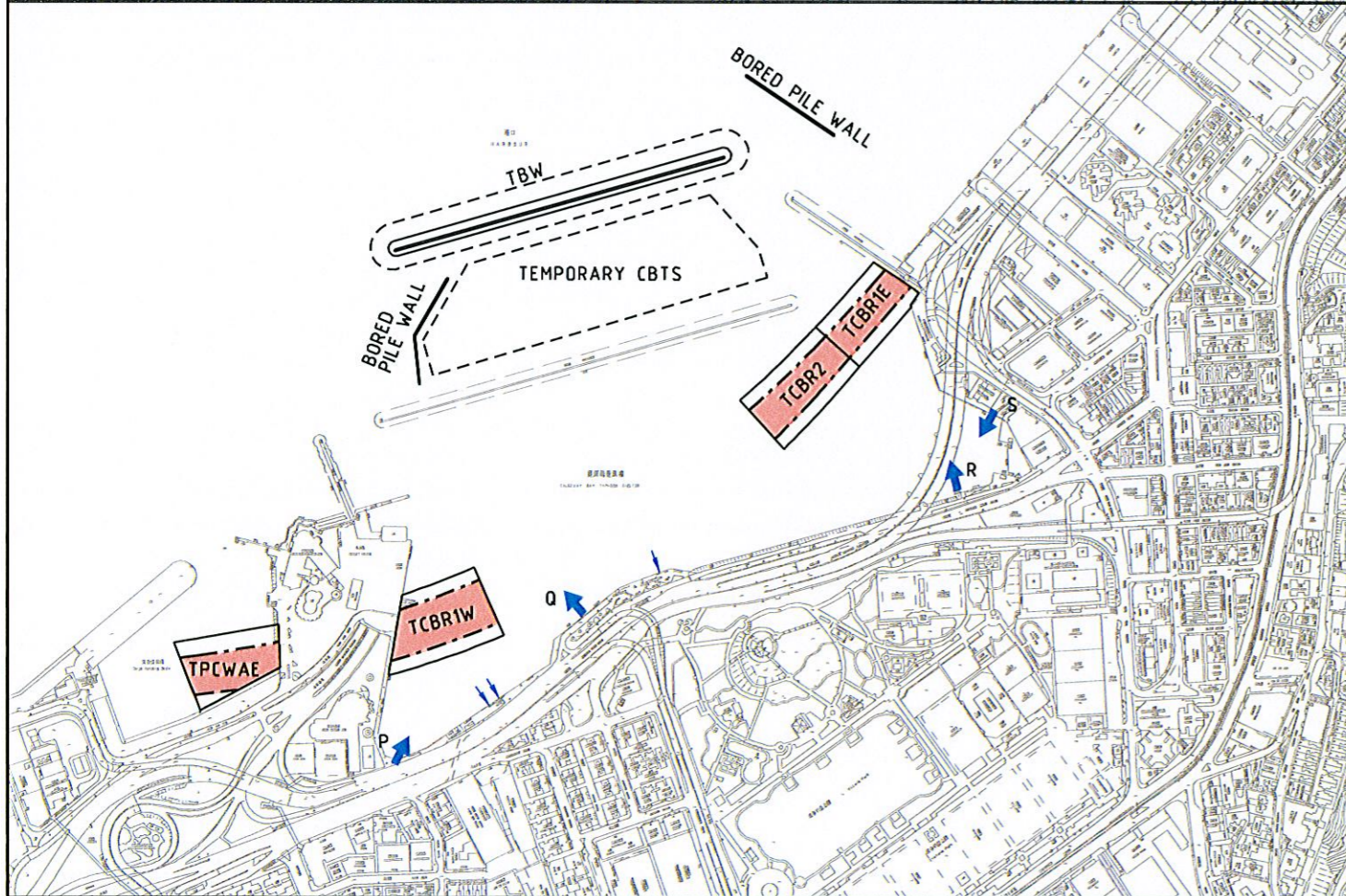
- EXISTING COOLING WATER INTAKE
- EXISTING STORM WATER OUTFALL
- REPROVISIONED COOLING WATER INTAKE
- REPROVISIONED STORM WATER OUTFALL
- TEMPORARY COOLING WATER INTAKE
- NEW COOLING WATER/SALT WATER CHAMBER
- NEW BOX CULVERT
- TEMPORARY DRAINAGE OUTFALL DIVERSION
- DIVERTED COOLING WATER INTAKE PIPELINES (PERMANENT)
- TEMPORARY COOLING WATER PIPELINES
- RECLAMATION IN THE PERIOD
- CWB TUNNEL CONSTRUCTION IN THE PERIOD
- CWB TUNNEL (COMPLETED)

DATE: 2007-8-20 10:54:57



LATE 2009 TO MID 2010

- TCBR1E RECLAMATION
- TCBR1W RECLAMATION
- TCBR2 RECLAMATION
- CWB TUNNEL CONSTRUCTION AT TPCWAE
- CWB TUNNEL CONSTRUCTION AT TCBRIE (AFTER COMPLETION OF TCBRIE RECLAMATION)



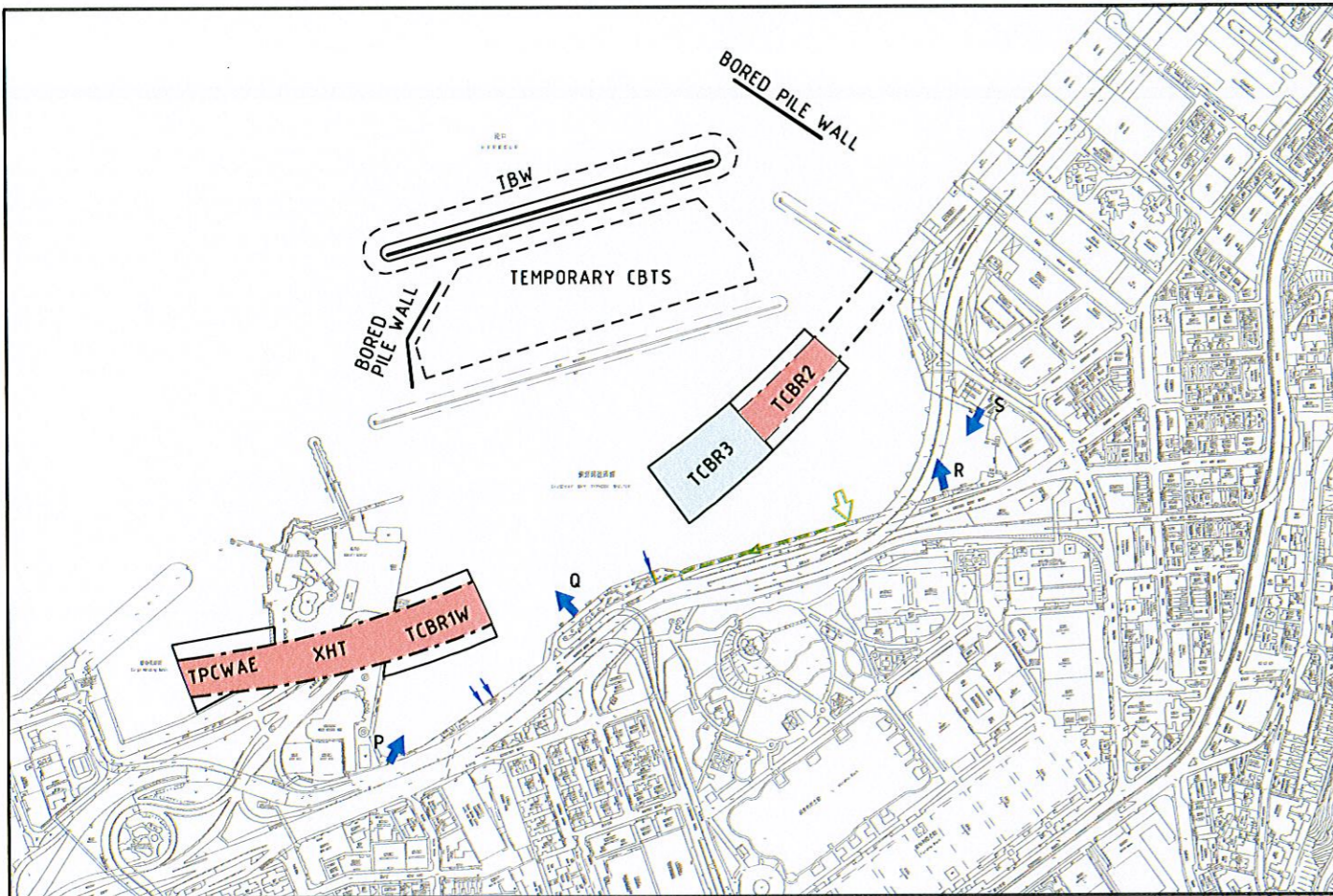
MID 2010 TO EARLY 2011

- CWB TUNNEL CONSTRUCTION AT TPCWAE
- CWB TUNNEL CONSTRUCTION AT TCBRIE
- CWB TUNNEL CONSTRUCTION AT TCBRIW
- CWB TUNNEL CONSTRUCTION AT TCBR2

LEGEND:

- EXISTING COOLING WATER INTAKE
- EXISTING STORM WATER OUTFALL
- REPROVISIONED COOLING WATER INTAKE
- REPROVISIONED STORM WATER OUTFALL
- TEMPORARY COOLING WATER INTAKE
- NEW COOLING WATER/SALT WATER CHAMBER
- NEW BOX CULVERT
- TEMPORARY DRAINAGE OUTFALL DIVERSION
- DIVERTED COOLING WATER INTAKE PIPELINES (PERMANENT)
- TEMPORARY COOLING WATER PIPELINES
- RECLAMATION IN THE PERIOD
- CWB TUNNEL CONSTRUCTION IN THE PERIOD
- CWB TUNNEL (COMPLETED)

DATE: 2007-8-2 19:10:13

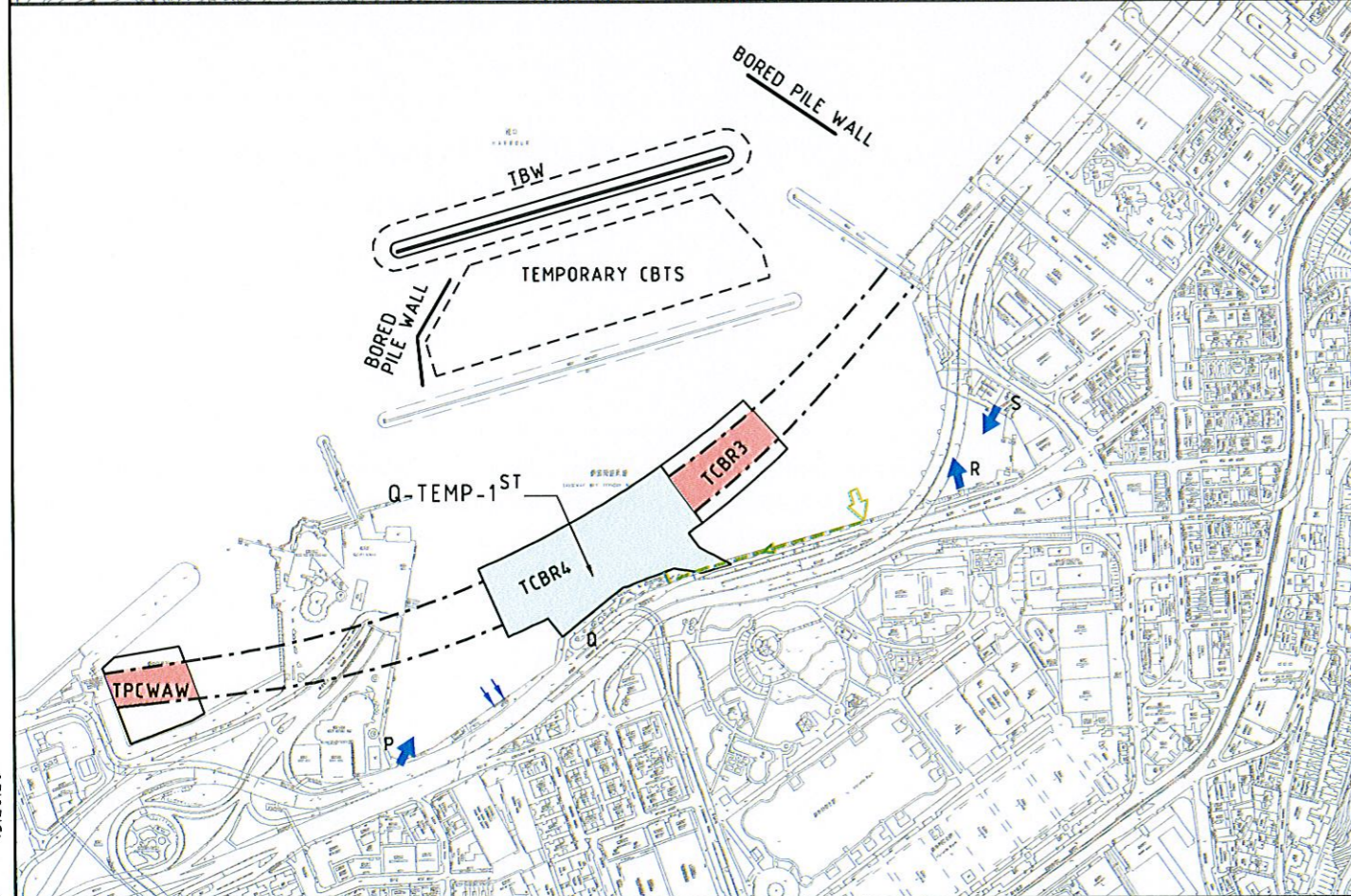


EARLY 2011 TO MID 2012

- TCBR1E RECLAMATION REMOVAL AFTER CWB TUNNEL IN TCBR1E COMPLETE
- TEMPORARY DIVERSION OF COOLING MAIN & INTAKE (WINDSOR HOUSE)
- COMMISSIONING OF DIVERTED COOLING MAIN & INTAKE
- TCBR3 RECLAMATION
- CWB TUNNEL CONSTRUCTION AT TPCWAE
- CWB TUNNEL CONSTRUCTION AT TCBR1W
- CWB TUNNEL CONSTRUCTION AT TCBR2
- CWB TUNNEL UNDER CROSS HARBOUR TUNNEL PORTAL AREA (XHT)

LEGEND:

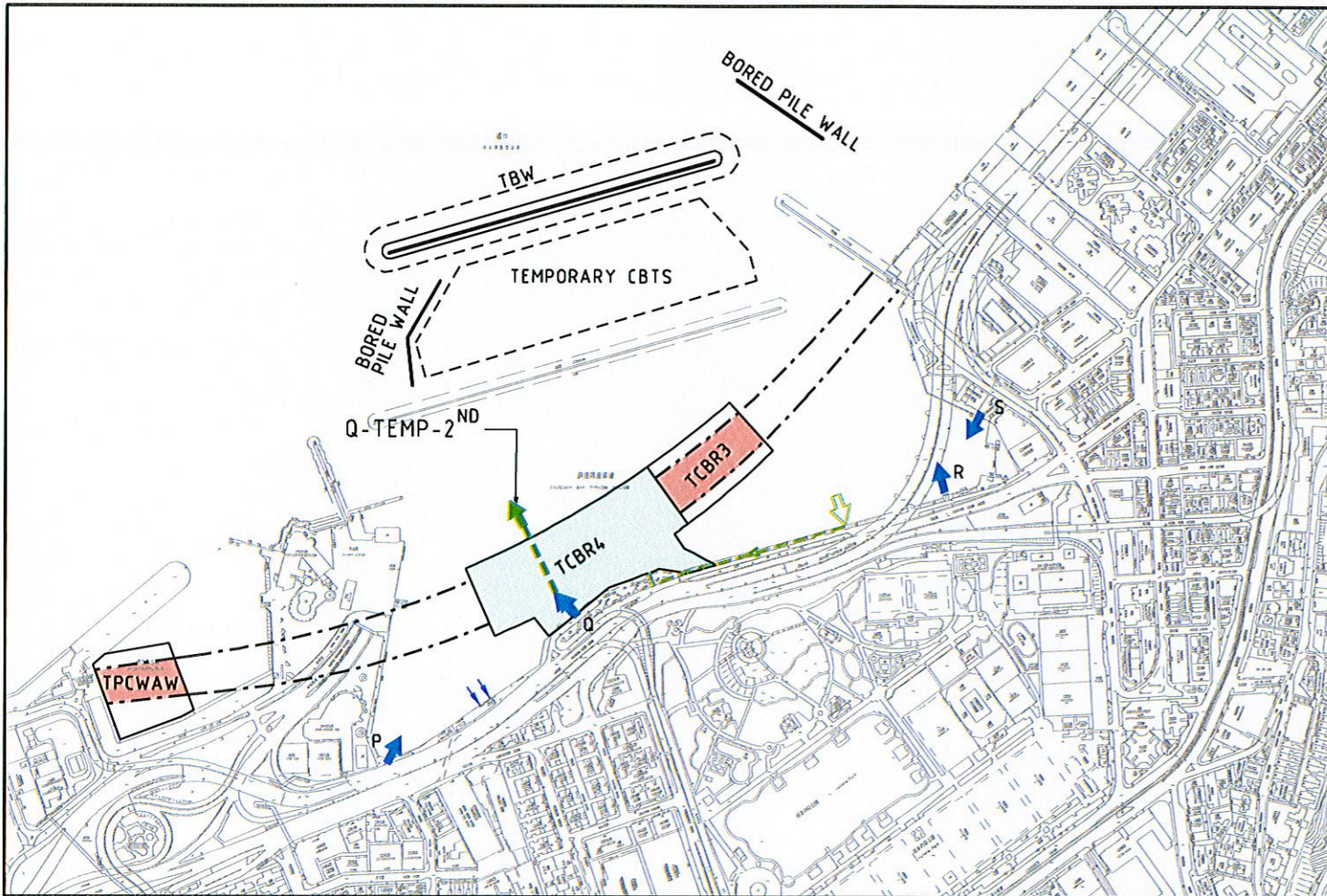
- EXISTING COOLING WATER INTAKE
- EXISTING STORM WATER OUTFALL
- REPROVISIONED COOLING WATER INTAKE
- REPROVISIONED STORM WATER OUTFALL
- TEMPORARY COOLING WATER INTAKE
- NEW COOLING WATER/SALT WATER CHAMBER
- NEW BOX CULVERT
- TEMPORARY DRAINAGE OUTFALL DIVERSION
- DIVERTED COOLING WATER INTAKE PIPELINES (PERMANENT)
- TEMPORARY COOLING WATER PIPELINES
- RECLAMATION IN THE PERIOD
- CWB TUNNEL CONSTRUCTION IN THE PERIOD
- CWB TUNNEL (COMPLETED)



MID 2012 TO LATE 2012

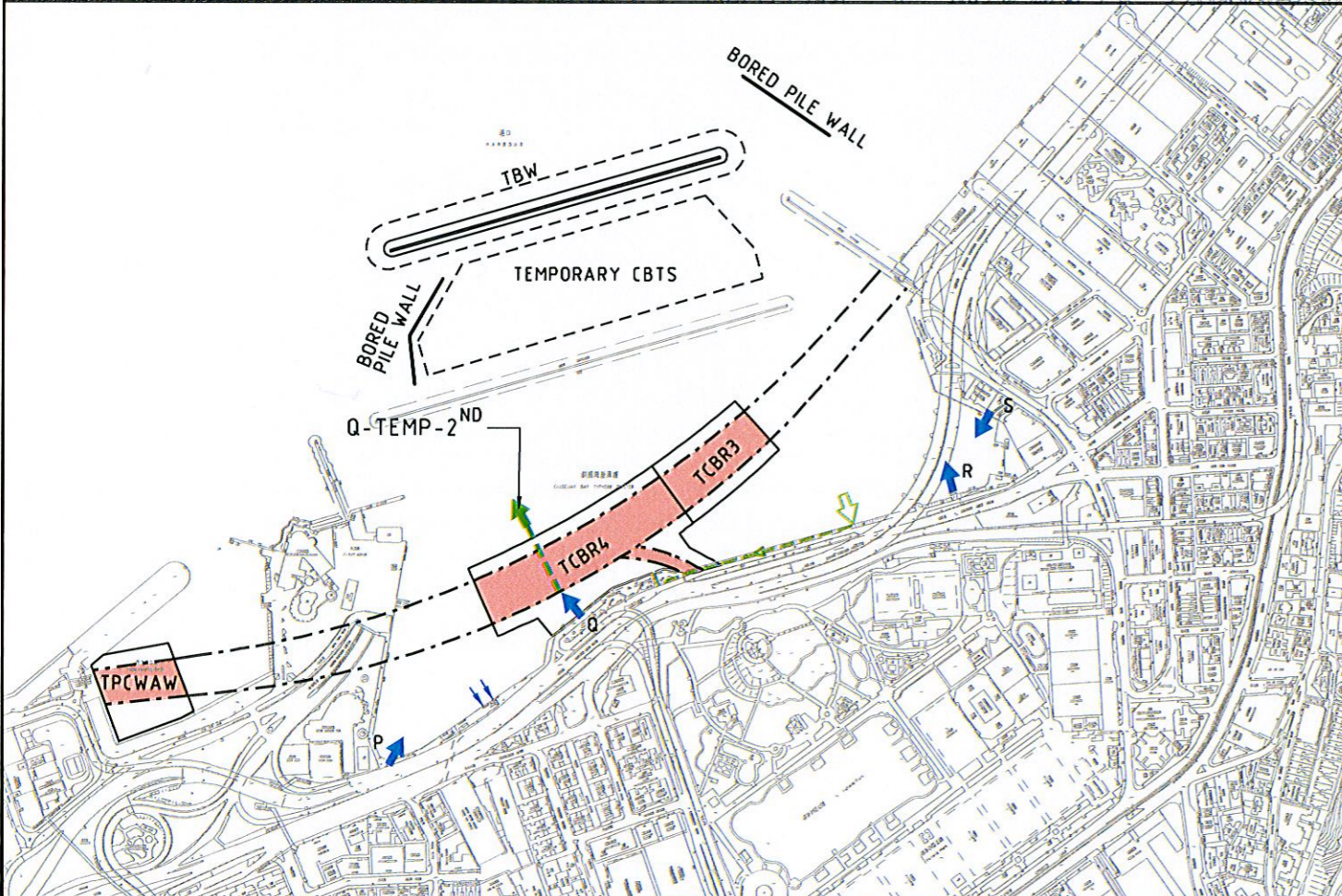
- TCBR1W RECLAMATION REMOVAL IN EARLY 2012
- TCBR2 RECLAMATION REMOVAL IN EARLY 2012
- TPCWAE RECLAMATION REMOVAL IN EARLY 2012
- DIVERSION OF CULVERT Q TO TEMPORARY CULVERT (Q-TEMP-1ST) DISCHARGING TO EASTERN HALF OF TCBR4
- TCBR4 RECLAMATION (FROM WEST TO EAST)
- TPCWAW RECLAMATION
- CWB TUNNEL CONSTRUCTION AT TCBR3
- CWB TUNNEL CONSTRUCTION AT TPCWAW

DATE: 2007-8-3 15:20:20



LATE 2012 TO EARLY 2013

- DIVERSION OF OUTFALL Q TO TEMPORARY OUTFALL (Q-TEMP-2ND) ON RECLAIMED WESTERN PART OF TCBR4
- TCBR4 RECLAMATION (EASTERN SECTION)
- CWB TUNNEL CONSTRUCTION AT TCBR3
- CWB TUNNEL CONSTRUCTION AT TPCWAW

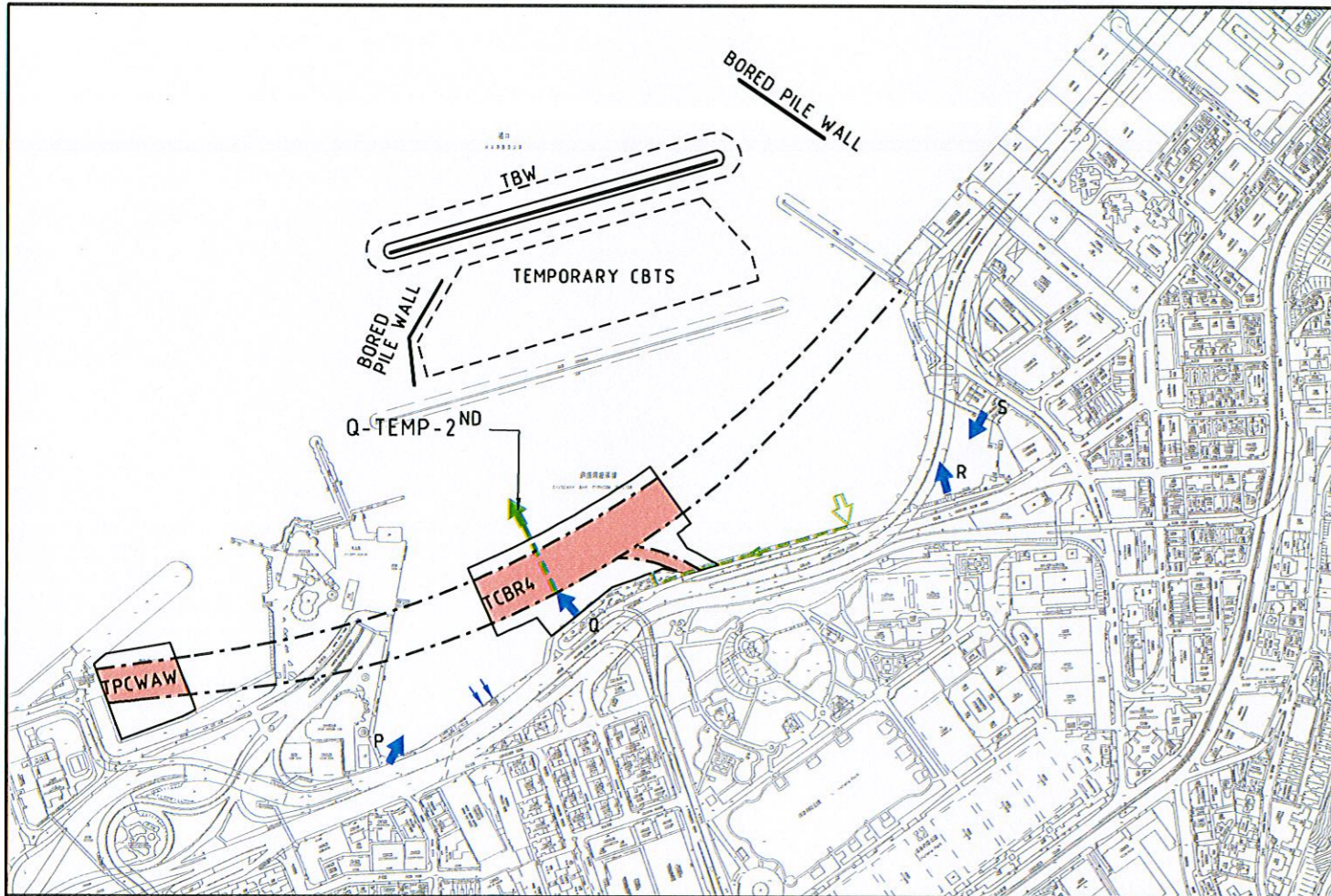


EARLY 2013 TO MID 2014

- CWB TUNNEL CONSTRUCTION AT TCBR3
- CWB TUNNEL CONSTRUCTION AT TCBR4
- CWB TUNNEL CONSTRUCTION AT TPCWAW

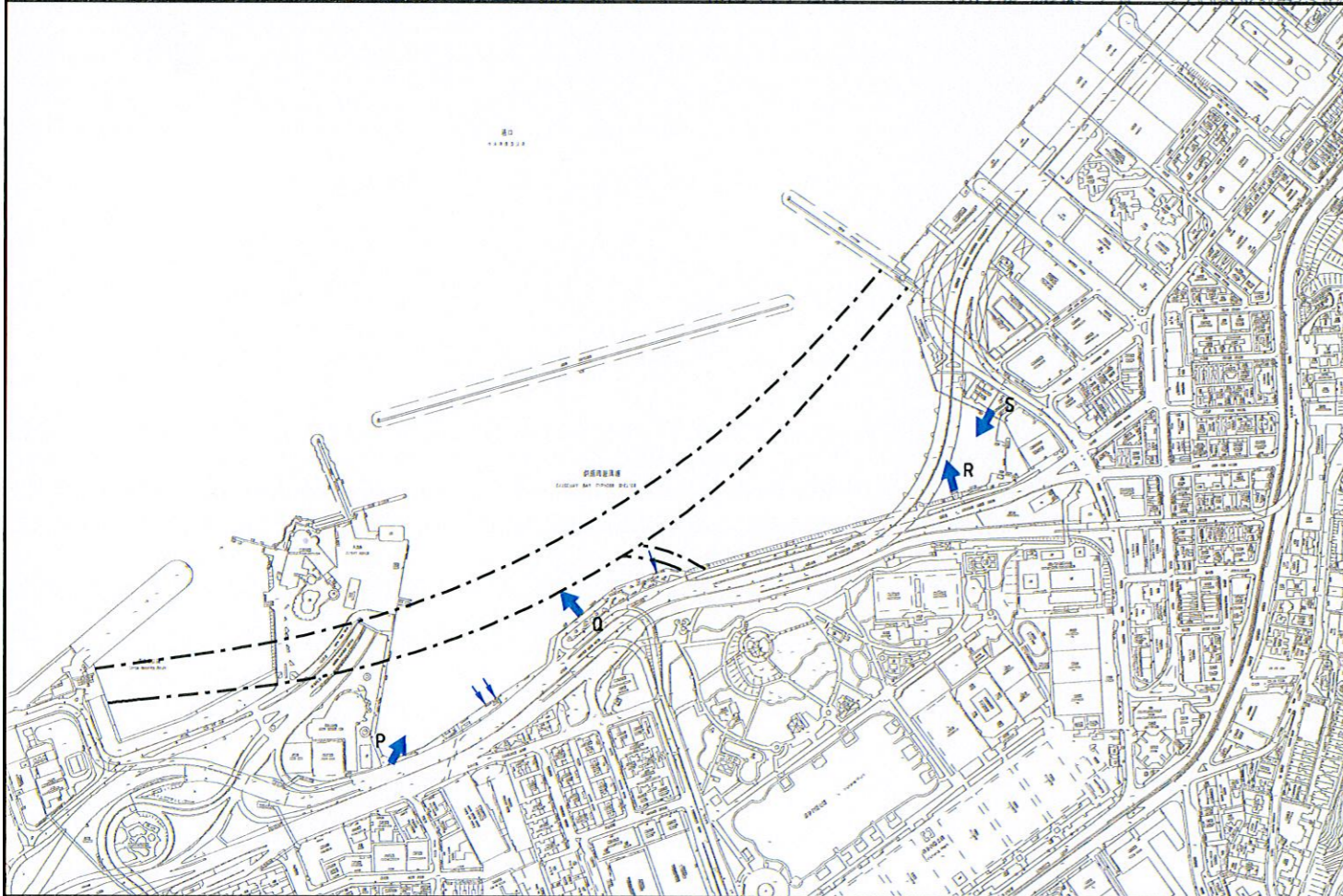
LEGEND:

- EXISTING COOLING WATER INTAKE
- EXISTING STORM WATER OUTFALL
- REPROVISIONED COOLING WATER INTAKE
- REPROVISIONED STORM WATER OUTFALL
- TEMPORARY COOLING WATER INTAKE
- NEW COOLING WATER/SALT WATER CHAMBER
- NEW BOX CULVERT
- TEMPORARY DRAINAGE OUTFALL DIVERSION
- DIVERTED COOLING WATER INTAKE PIPELINES (PERMANENT)
- TEMPORARY COOLING WATER PIPELINES
- RECLAMATION IN THE PERIOD
- CWB TUNNEL CONSTRUCTION IN THE PERIOD
- CWB TUNNEL (COMPLETED)



MID 2014 TO LATE 2015

- CWB TUNNEL CONSTRUCTION AT TPCWAW
- CWB & SLIP ROAD 8 TUNNELS CONSTRUCTION AT TCBR4
- TCBR3 RECLAMATION REMOVAL IN LATE 2013



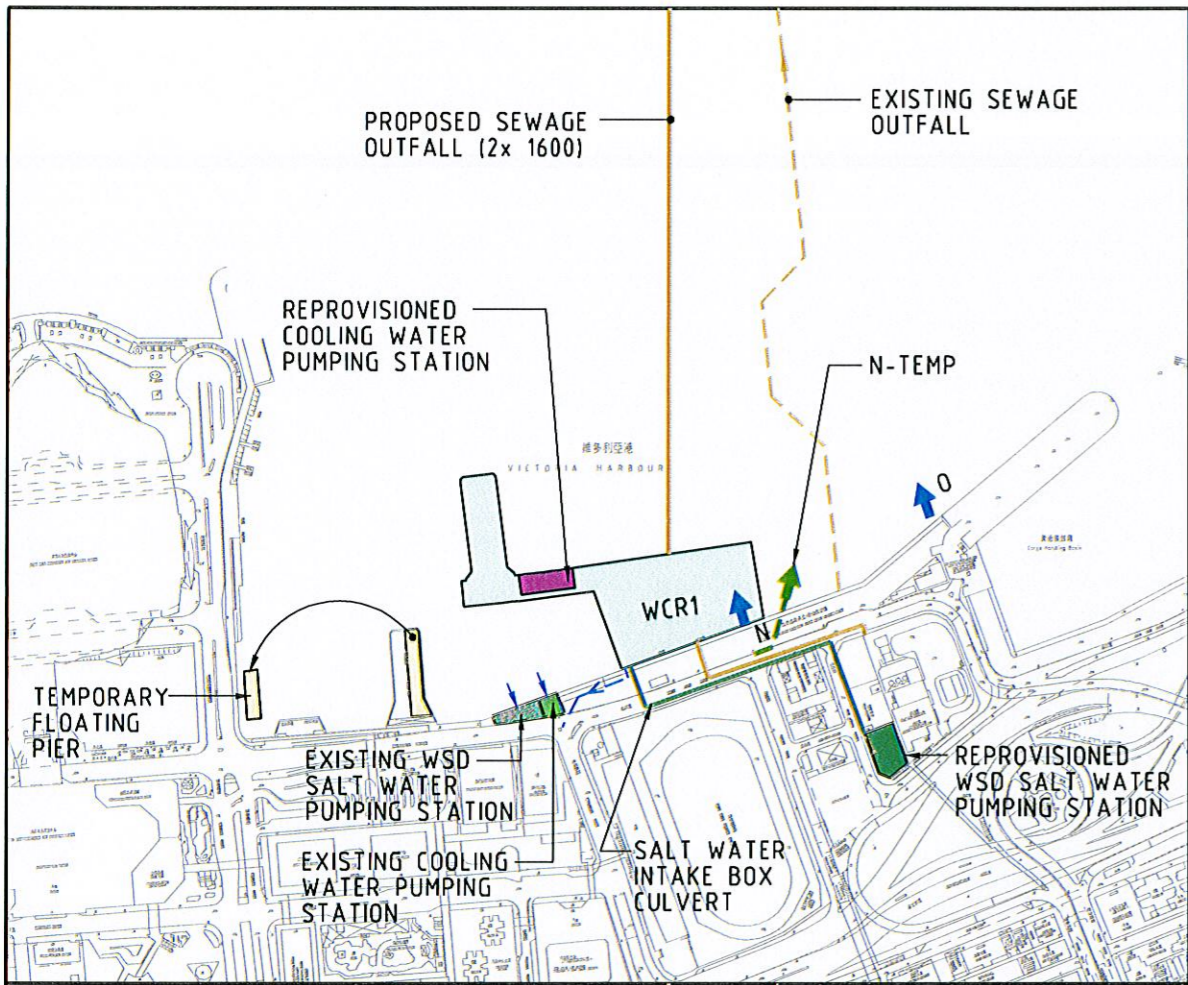
LATE 2015 TO EARLY 2016

- TPCWAW RECLAMATION REMOVAL IN EARLY 2015
- TCBR4 RECLAMATION REMOVAL IN MID 2015
- REINSTATEMENT OF EXISTING COOLING MAIN & INTAKE (WINDSOR HOUSE)
- REINSTATEMENT OF EXISTING OUTFALL Q
- TEMPORARY TYPHOON SHELTER REMOVAL IN LATE 2015

LEGEND:

- EXISTING COOLING WATER INTAKE
- EXISTING STORM WATER OUTFALL
- REPROVISIONED COOLING WATER INTAKE
- REPROVISIONED STORM WATER OUTFALL
- TEMPORARY COOLING WATER INTAKE
- NEW COOLING WATER/SALT WATER CHAMBER
- NEW BOX CULVERT
- TEMPORARY DRAINAGE OUTFALL DIVERSION
- DIVERTED COOLING WATER INTAKE PIPELINES (PERMANENT)
- TEMPORARY COOLING WATER PIPELINES
- CWB TUNNEL CONSTRUCTION IN THE PERIOD
- CWB TUNNEL (COMPLETED)

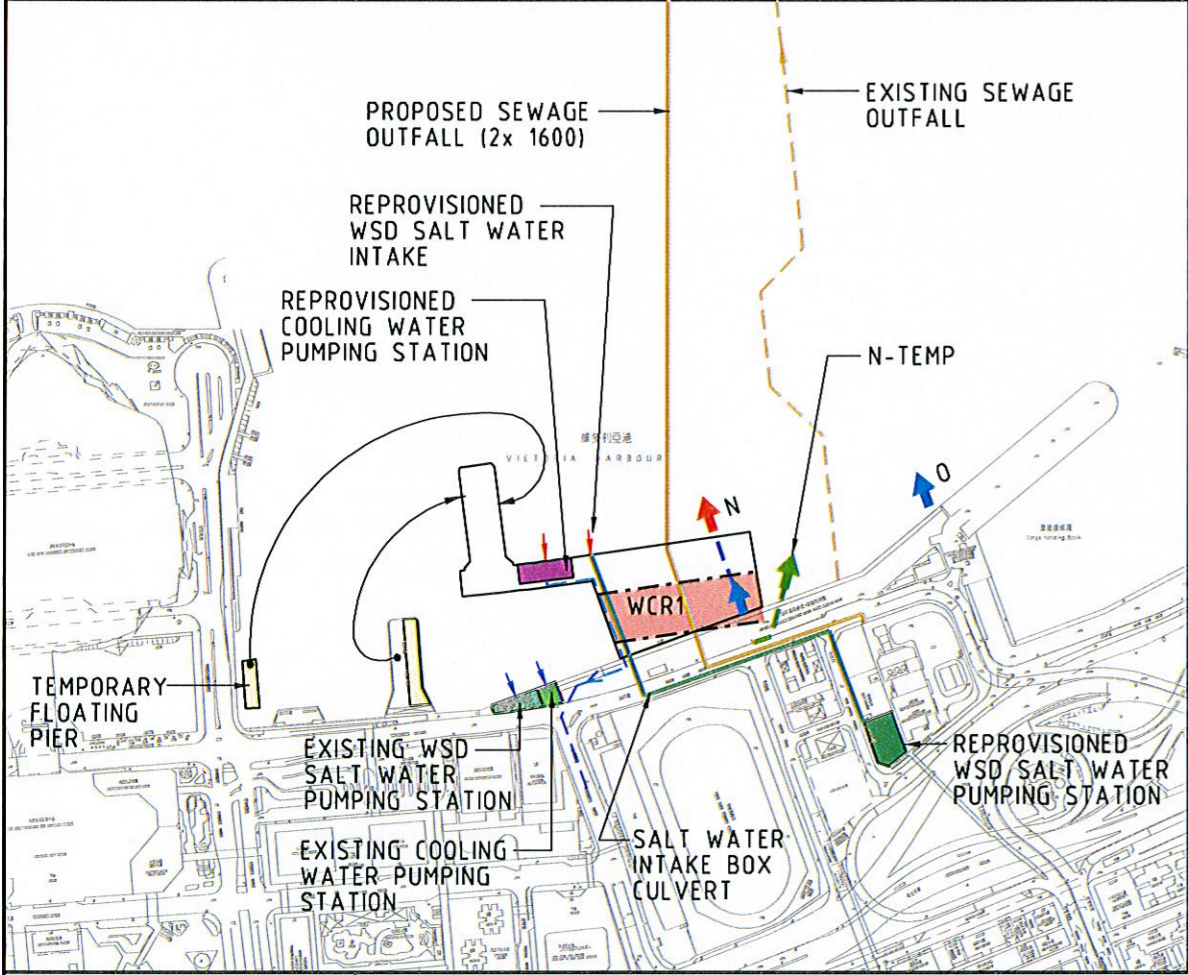
DATE: 2007-8-2 19:20:19



WAN CHAI RECLAMATION

EARLY 2009 TO EARLY 2010

- DIVERSION OF EXISTING FERRY SERVICE AT THE EAST BERTH OF WAN CHAI FERRY PIER TO A TEMPORARY FLOATING PIER
- DIVERSION OF OUTFALL N TO TEMPORARY OUTFALL (N-TEMP) TO THE EAST OF WCR1 RECLAMATION
- WCR1 RECLAMATION
- CONSTRUCTION OF NEW FERRY PIER
- CONSTRUCTION OF NEW SEWAGE OUTFALL AT HARBOUR AREA AND ON EXISTING LAND
- CONSTRUCTION OF REPROVISIONED WSD SALT WATER PUMPING STATION AND ITS INTAKE BOX CULVERT (LAND SIDE)
- CONSTRUCTION OF COOLING WATER PUMPING CHAMBERS AT NEW SEAWALL



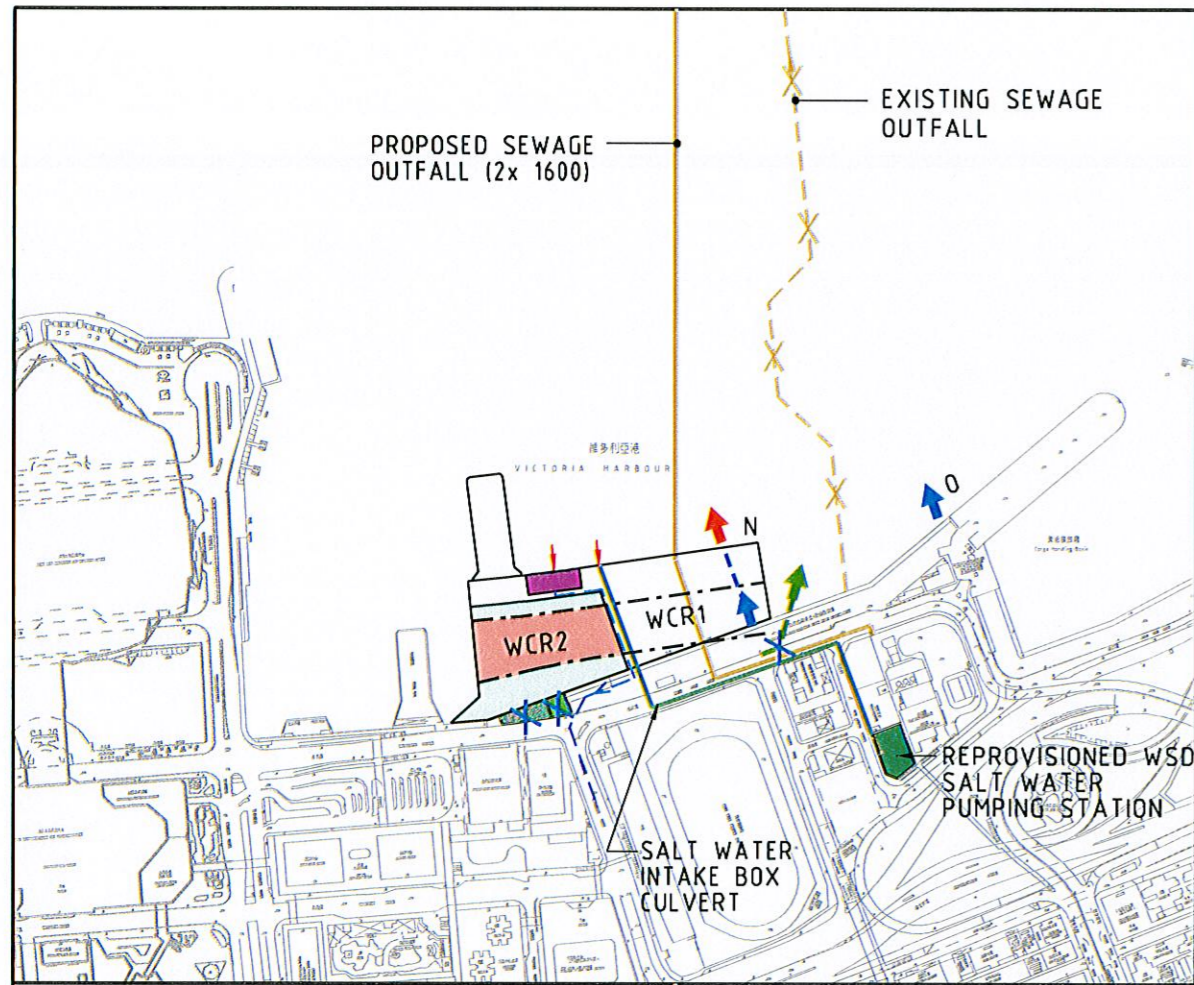
EARLY 2010 TO EARLY 2011

- CWB TUNNEL CONSTRUCTION AT WCR1
- CONSTRUCTION OF SEWAGE OUTFALL AT SEASIDE AND ON RECLAIMED PART OF WCR1 RECLAMATION
- CONSTRUCTION OF COOLING WATER MAINS (SHK CENTRE)
- CONSTRUCTION OF NEW SALT WATER INTAKE BOX CULVERT
- CONSTRUCTION OF PERMANENT CULVERT N
- DIVERSION OF ALL EXISTING FERRY SERVICE TO THE NEW WAN CHAI FERRY PIER
- COMMISSIONING OF COOLING WATER MAINS SYSTEM (SHK CENTRE)
- COMMISSIONING OF SALT WATER INTAKE SYSTEM

LEGEND:

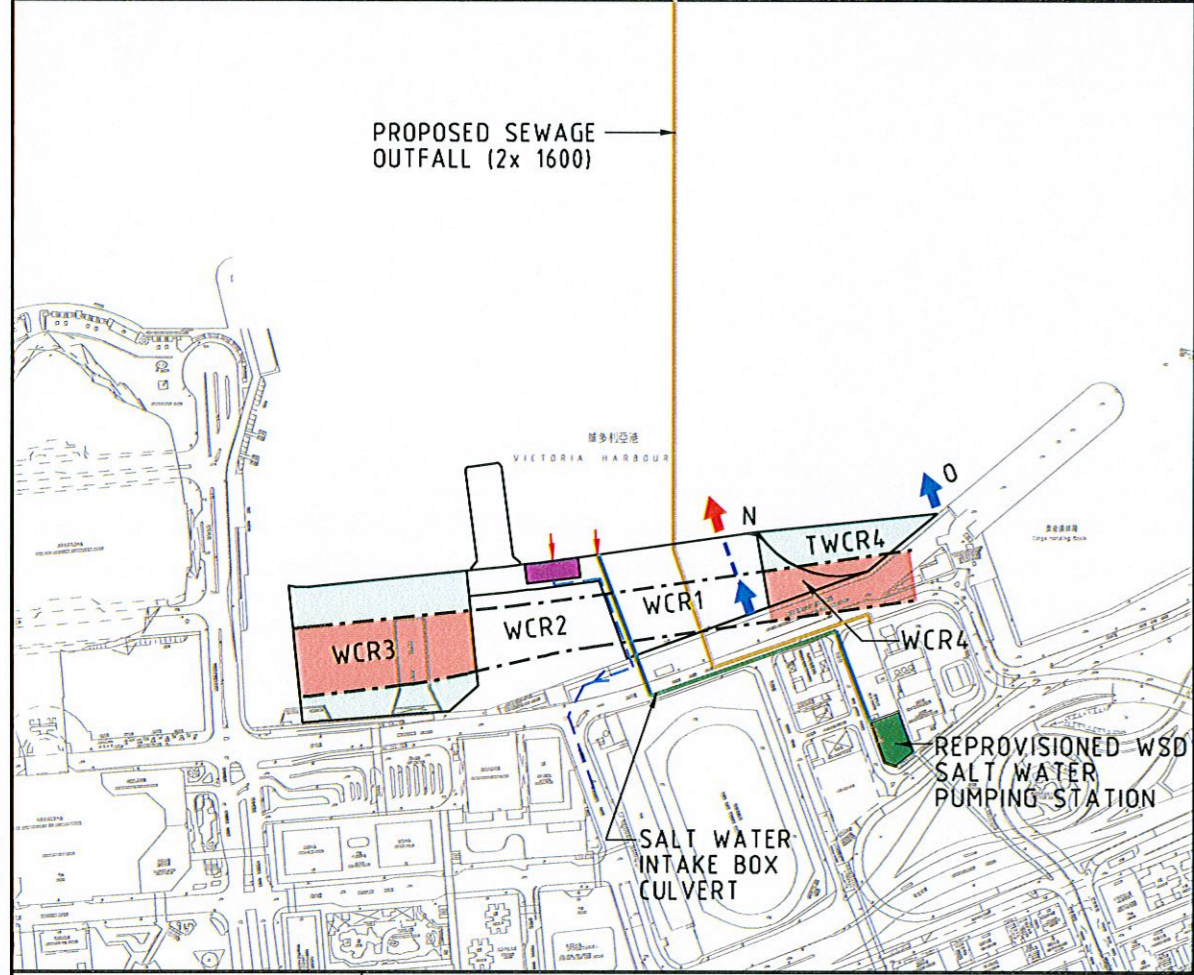
- EXISTING COOLING WATER INTAKE/ EXISTING WSD SALT WATER INTAKE
- EXISTING STORM WATER OUTFALL
- REPROVISIONED COOLING WATER INTAKE/ REPROVISIONED WSD SALT WATER INTAKE
- REPROVISIONED STORM WATER OUTFALL
- TEMPORARY COOLING WATER INTAKE
- NEW COOLING WATER/SALT WATER CHAMBER
- NEW BOX CULVERT
- TEMPORARY DRAINAGE OUTFALL DIVERSION
- DIVERTED COOLING WATER INTAKE PIPELINES (PERMANENT)
- TEMPORARY COOLING WATER PIPELINES
- RECLAMATION IN THE PERIOD
- CWB TUNNEL CONSTRUCTION IN THE PERIOD
- CWB TUNNEL (COMPLETED)

DATE: 2007-8-2 19:30:08



EARLY 2011 TO LATE 2012

- COMMISSIONING OF NEW SEWAGE SUBMARINE OUTFALL
- WCR2 RECLAMATION
- DEMOLITION OF EXISTING WSD SALT WATER PUMPING STATION, COOLING WATER PUMPING STATION & EXISTING FERRY PIER
- ABANDON EXISTING SEWAGE SUBMARINE OUTFALL
- CWB TUNNEL CONSTRUCTION AT WCR2



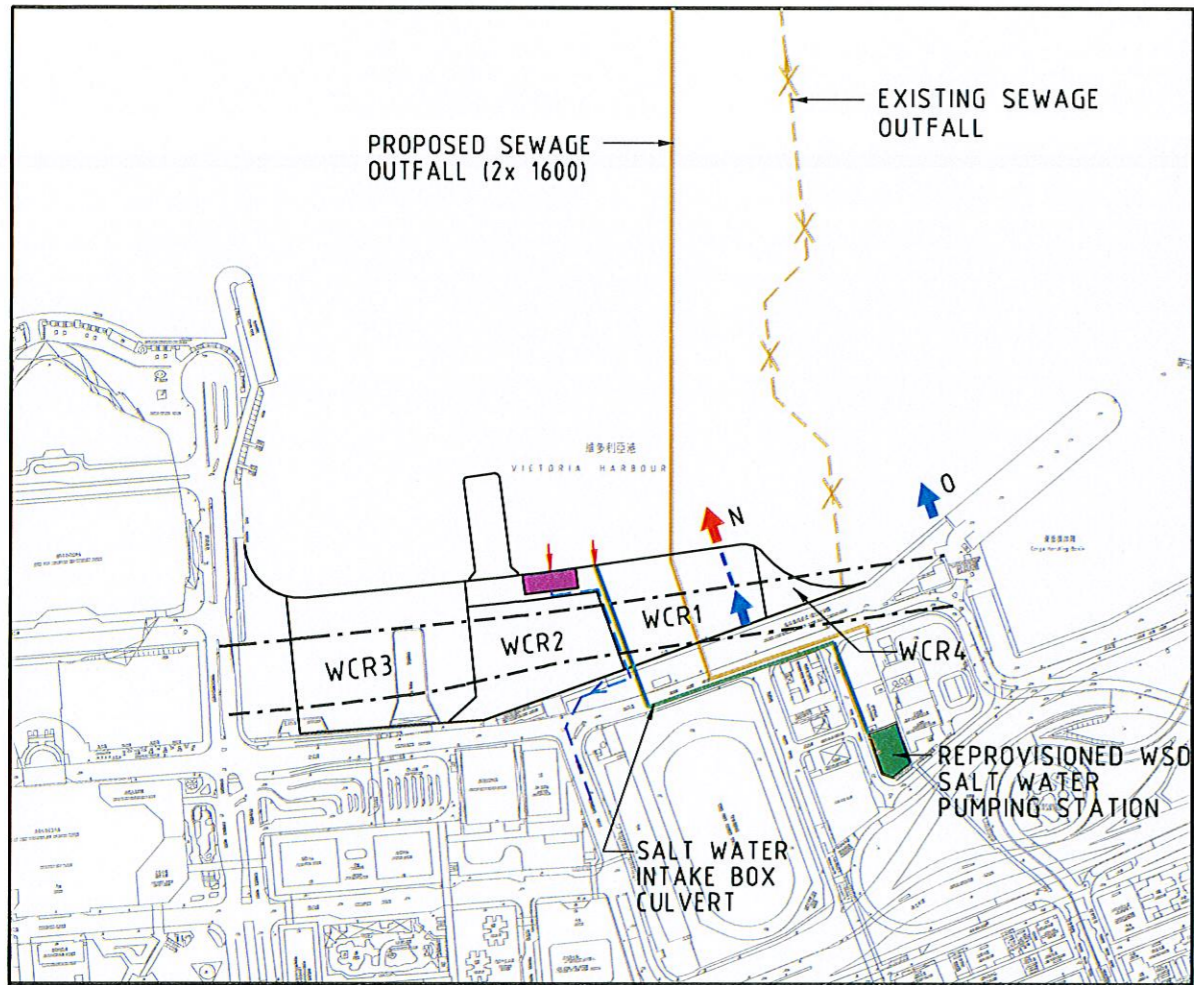
LATE 2012 TO EARLY 2015

- WCR3 RECLAMATION
- WCR4 RECLAMATION
- TWCR4 RECLAMATION
- CWB TUNNEL CONSTRUCTION AT WCR3
- CWB TUNNEL CONSTRUCTION AT WCR4 & TWCR4

LEGEND:

- EXISTING COOLING WATER INTAKE / EXISTING WSD SALT WATER INTAKE
- EXISTING STORM WATER OUTFALL
- REPROVISIONED COOLING WATER INTAKE / REPROVISIONED WSD SALT WATER INTAKE
- REPROVISIONED STORM WATER OUTFALL
- TEMPORARY COOLING WATER INTAKE
- NEW COOLING WATER / SALT WATER CHAMBER
- NEW BOX CULVERT
- TEMPORARY DRAINAGE OUTFALL DIVERSION
- DIVERTED COOLING WATER INTAKE PIPELINES (PERMANENT)
- TEMPORARY COOLING WATER PIPELINES
- RECLAMATION IN THE PERIOD
- CWB TUNNEL CONSTRUCTION IN THE PERIOD
- CWB TUNNEL (COMPLETED)

DATE: 2007-8-2 19:31:26

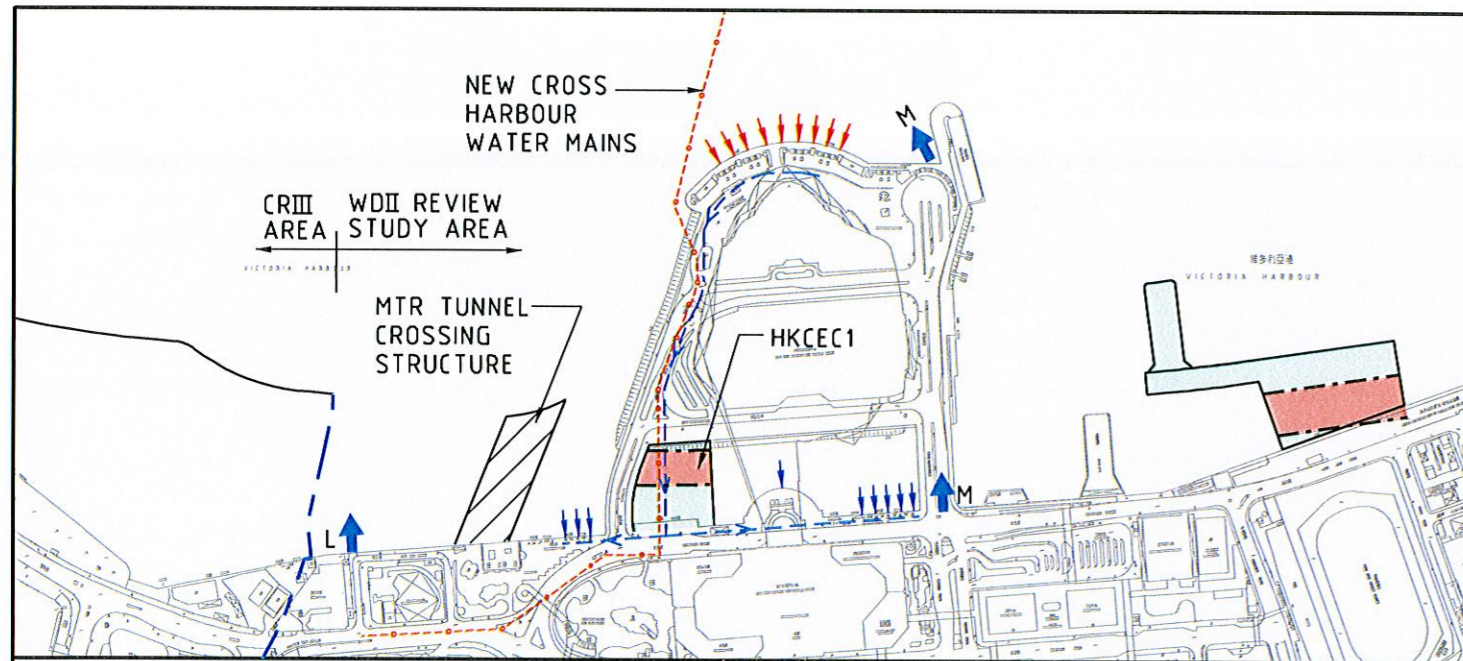


EARLY 2015 TO LATE 2015

- AT GRADE ROAD
- CONSTRUCTION OF PERMANENT WCR4 SEAWALL
- REMOVAL OF TWCR4 RECLAMATION

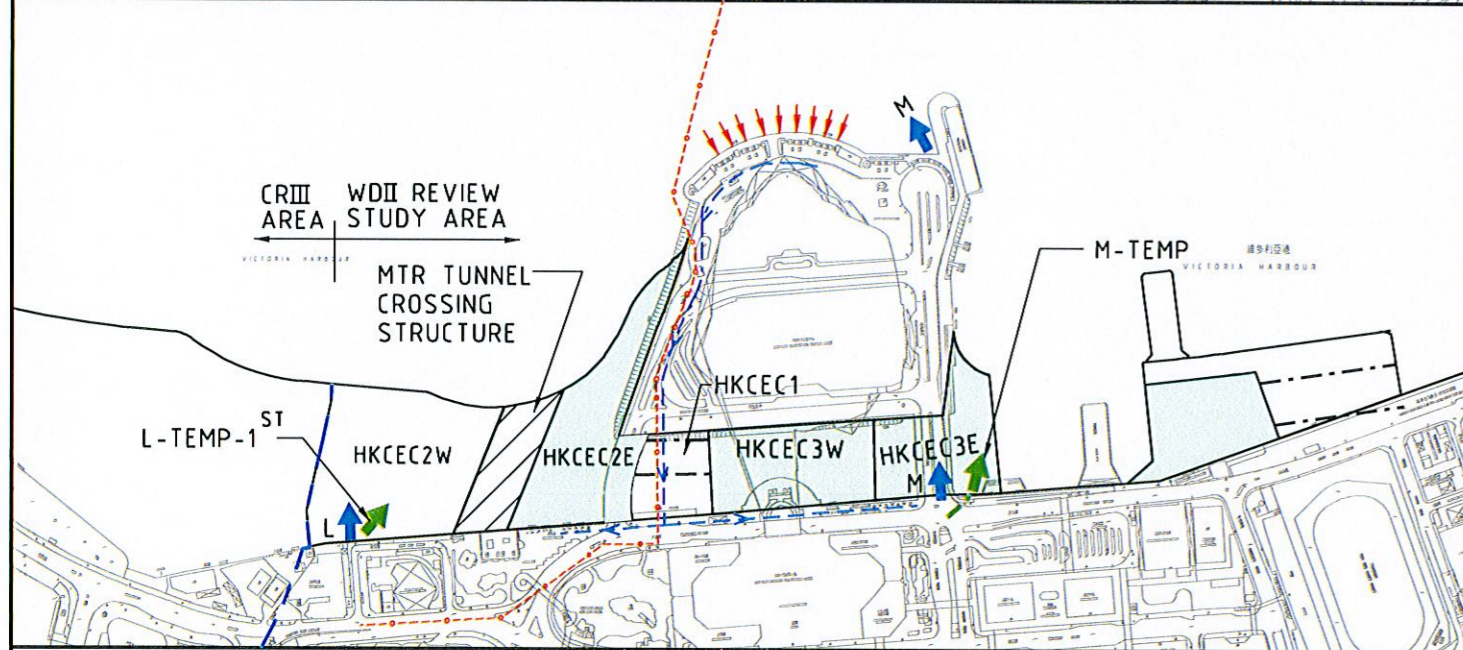
- LEGEND:
- EXISTING COOLING WATER INTAKE / EXISTING WSD SALT WATER INTAKE
 - EXISTING STORM WATER OUTFALL
 - REPROVISIONED COOLING WATER INTAKE / REPROVISIONED WSD SALT WATER INTAKE
 - REPROVISIONED STORM WATER OUTFALL
 - TEMPORARY COOLING WATER INTAKE
 - NEW COOLING WATER/SALT WATER CHAMBER
 - NEW BOX CULVERT
 - TEMPORARY DRAINAGE OUTFALL DIVERSION
 - DIVERTED COOLING WATER INTAKE PIPELINES (PERMANENT)
 - TEMPORARY COOLING WATER PIPELINES
 - RECLAMATION IN THE PERIOD
 - CWB TUNNEL CONSTRUCTION IN THE PERIOD
 - CWB TUNNEL (COMPLETED)

DATE: 2007-8-2 19:32:42



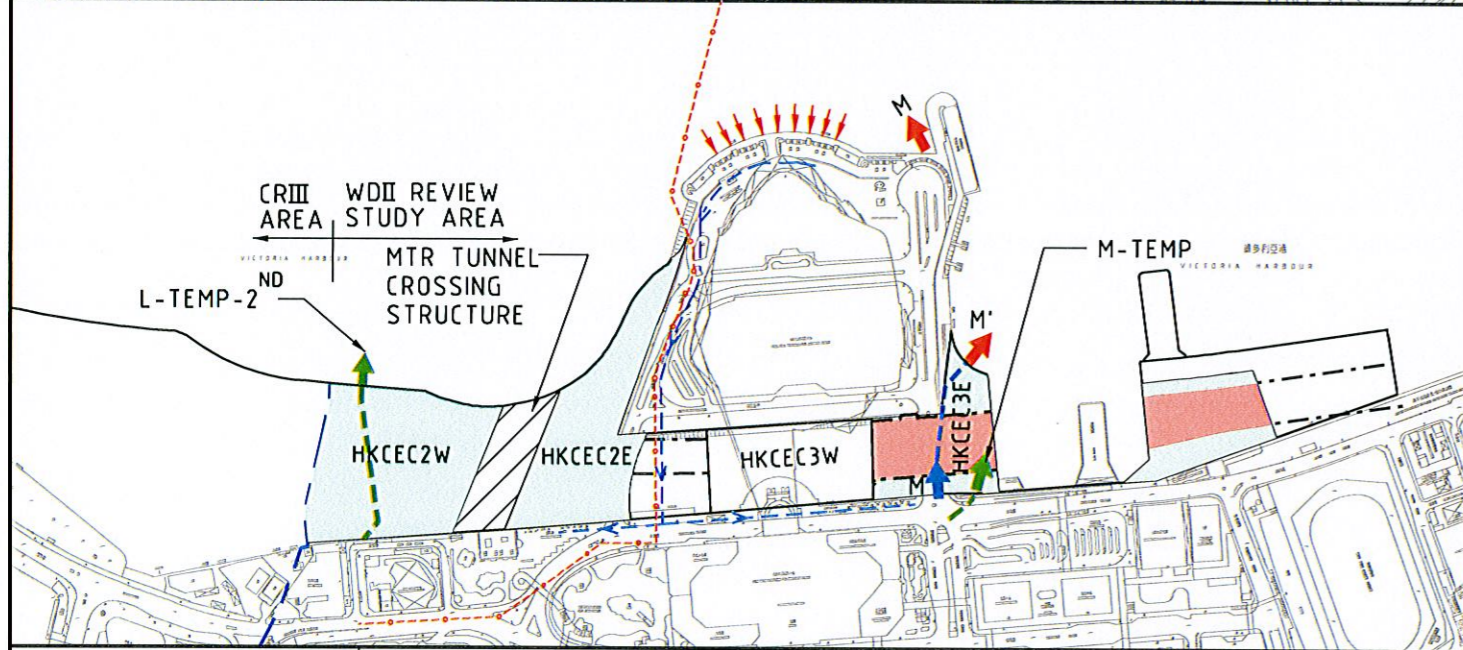
HKCEC RECLAMATION EARLY 2009 TO EARLY 2011

- HKCEC1 RECLAMATION
- MTR TUNNEL CROSSING STRUCTURE CONSTRUCTION
- CWB TUNNEL CONSTRUCTION AT HKCEC1
- COOLING WATER INTAKE PIPELINES CONSTRUCTION
- NEW CROSS HARBOUR WATER MAINS CONSTRUCTION
- COMMISSIONING OF THE NEW COOLING WATER INTAKE SYSTEM
- COMMISSIONING OF THE NEW CROSS HARBOUR WATER MAINS



EARLY 2011 TO LATE 2011

- MTR TUNNEL CROSSING STRUCTURE CONSTRUCTION
- DIVERSION OF OUTFALL M TO TEMPORARY OUTFALL (M-TEMP) DISCHARGING TO THE EASTERN HALF OF HKCEC3E
- DIVERSION OF OUTFALL L TO TEMPORARY OUTFALL (L-TEMP-1ST) DISCHARGING TO THE EASTERN HALF OF HKCEC2W
- HKCEC3E RECLAMATION (WEST TO EAST)
- HKCEC3W RECLAMATION
- HKCEC2W RECLAMATION (WEST TO EAST)
- HKCEC2E RECLAMATION



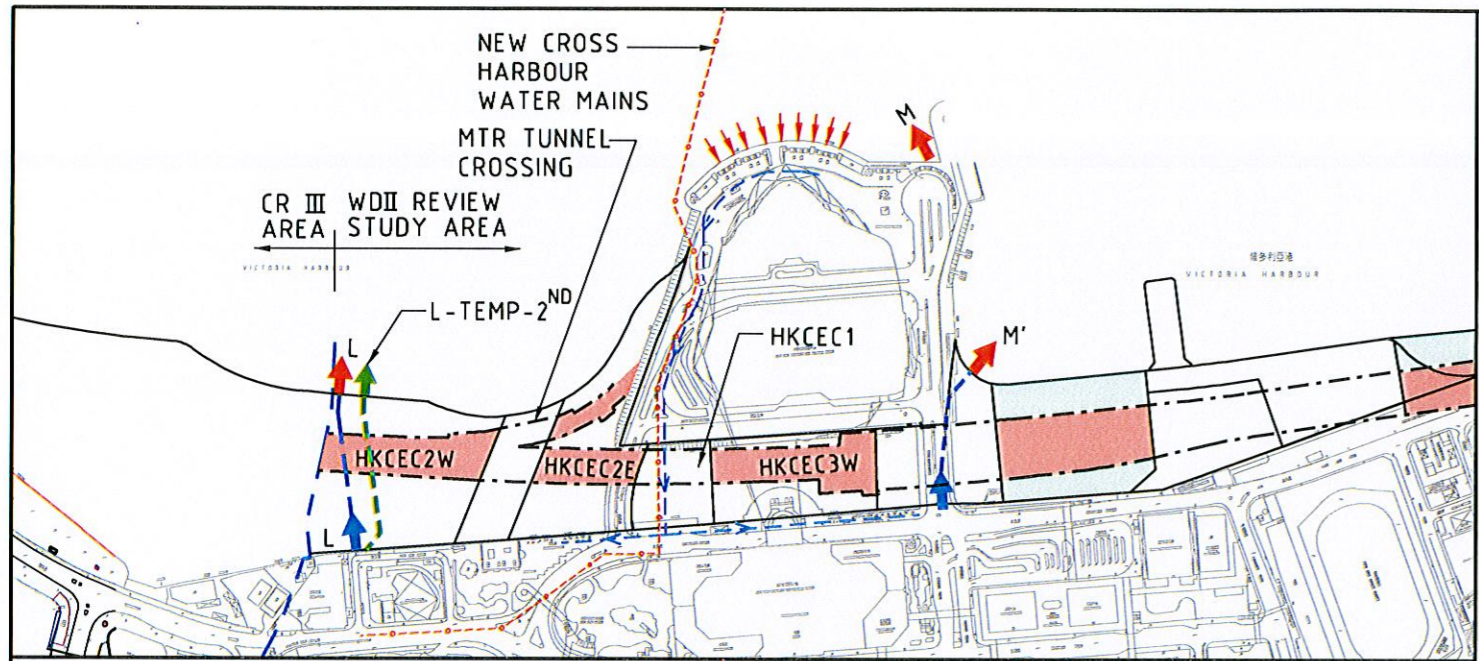
LATE 2011 TO LATE 2012

- MTR TUNNEL CROSSING STRUCTURE CONSTRUCTION
- DIVERSION OF OUTFALL L TO TEMPORARY OUTFALL (L-TEMP-2ND) ON THE RECLAIMED WESTERN PART OF HKCEC2W
- HKCEC2W RECLAMATION (EASTERN SIDE)
- HKCEC2E RECLAMATION
- HKCEC3E RECLAMATION (TO BOX CULVERT INVERT)
- CWB TUNNEL CONSTRUCTION AT HKCEC3E (AFTER COMPLETION OF HKCEC3E RECLAMATION)
- CONSTRUCTION OF PERMANENT OUTFALL M' ABOVE THE COMPLETED CWB TUNNEL

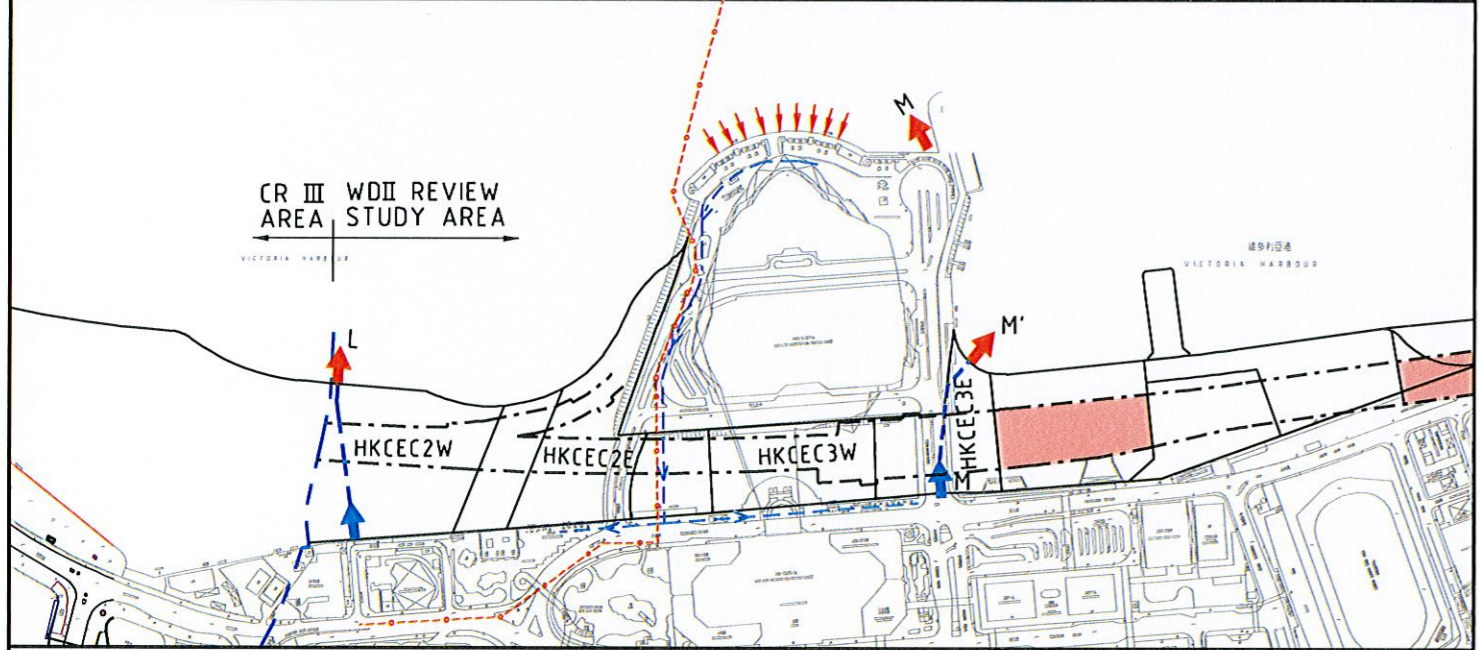
LEGEND:

- EXISTING COOLING WATER INTAKE
- EXISTING STORM WATER OUTFALL
- REPROVISIONED COOLING WATER INTAKE
- REPROVISIONED STORM WATER OUTFALL
- TEMPORARY COOLING WATER INTAKE
- NEW COOLING WATER/SALT WATER CHAMBER
- NEW BOX CULVERT
- TEMPORARY DRAINAGE OUTFALL DIVERSION
- DIVERTED COOLING WATER INTAKE PIPELINES (PERMANENT)
- TEMPORARY COOLING WATER PIPELINES
- RECLAMATION IN THE PERIOD
- CWB TUNNEL CONSTRUCTION IN THE PERIOD
- CWB TUNNEL (COMPLETED)
- MTR TUNNEL CROSSING STRUCTURE CONSTRUCTION IN THE PERIOD

DATE: 2007-8-2 19:34:24



LATE 2012 TO EARLY 2014
 -CWB TUNNEL CONSTRUCTION AT HKCEC3W, HKCEC2E & HKCEC2W
 -CONSTRUCTION OF PERMANENT OUTFALL L ABOVE THE COMPLETED CWB TUNNEL



EARLY 2014 TO LATE 2015
 -AT-GRADE ROAD

- LEGEND:
- EXISTING COOLING WATER INTAKE
 - EXISTING STORM WATER OUTFALL
 - REPROVISIONED COOLING WATER INTAKE
 - REPROVISIONED STORM WATER OUTFALL
 - TEMPORARY COOLING WATER INTAKE
 - NEW COOLING WATER/SALT WATER CHAMBER
 - NEW BOX CULVERT
 - TEMPORARY DRAINAGE OUTFALL DIVERSION
 - DIVERTED COOLING WATER INTAKE PIPELINES (PERMANENT)
 - TEMPORARY COOLING WATER PIPELINES
 - RECLAMATION IN THE PERIOD
 - CWB TUNNEL CONSTRUCTION IN THE PERIOD
 - CWB TUNNEL (COMPLETED)

DATE: 2007-8-2 19:35:27