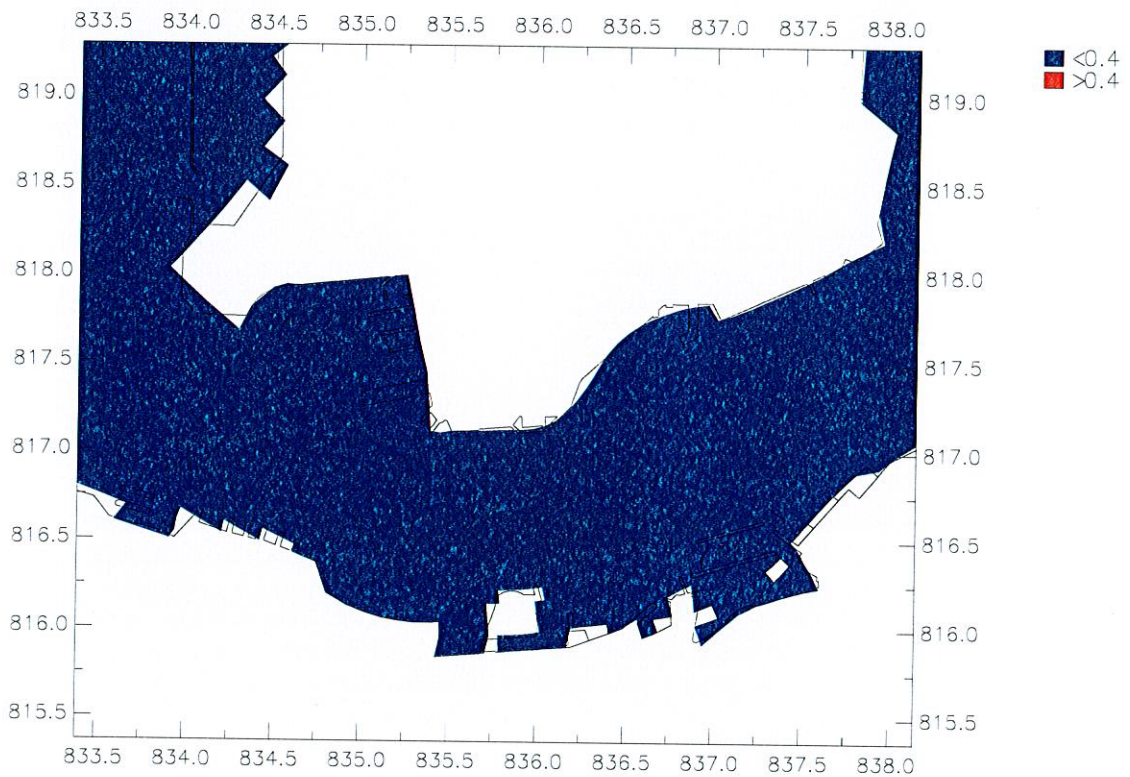
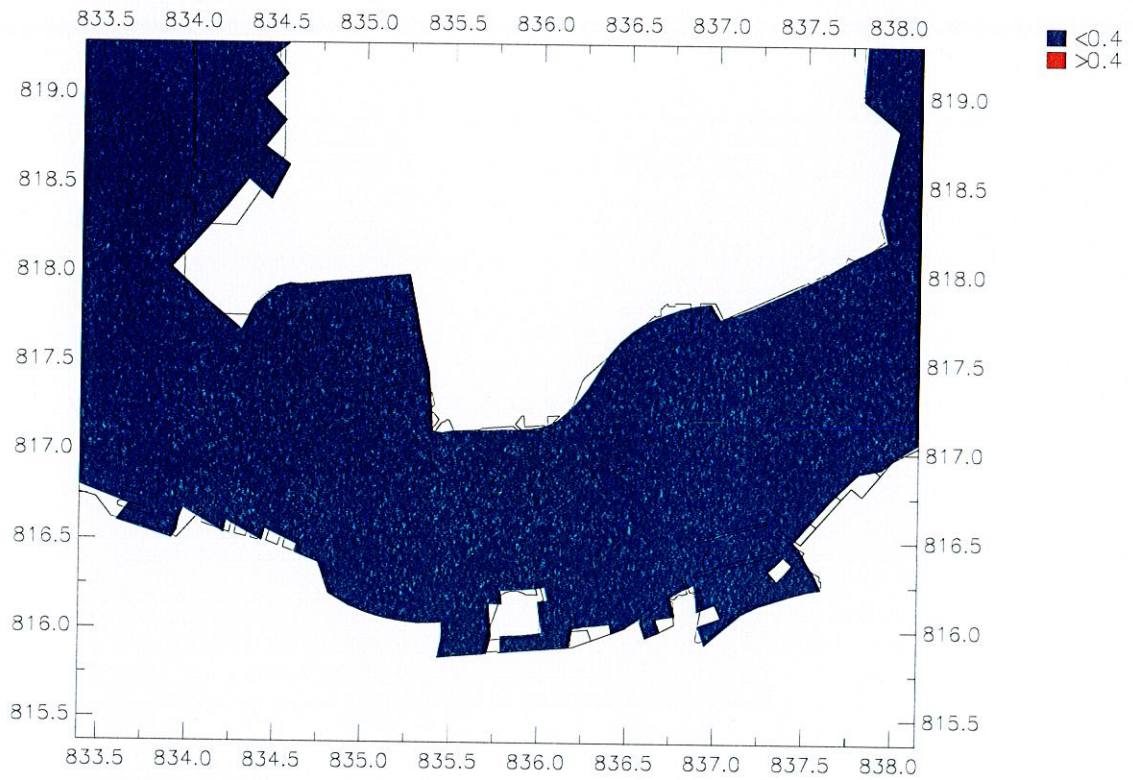


**Appendix 5.10g**  
**Maximum Mixing Zone for**  
**Contaminant Release – Scenario 2C**



Agreement No. CE 54/2001 (CE) Wan Chai Development Phase II: Planning And Engineering Review  
 Mixing Zone of Total Inorganic Nitrogen under Scenario 2C

Upper: Wet Season; Lower: Dry Season; Red: value exceeded WQO for TIN

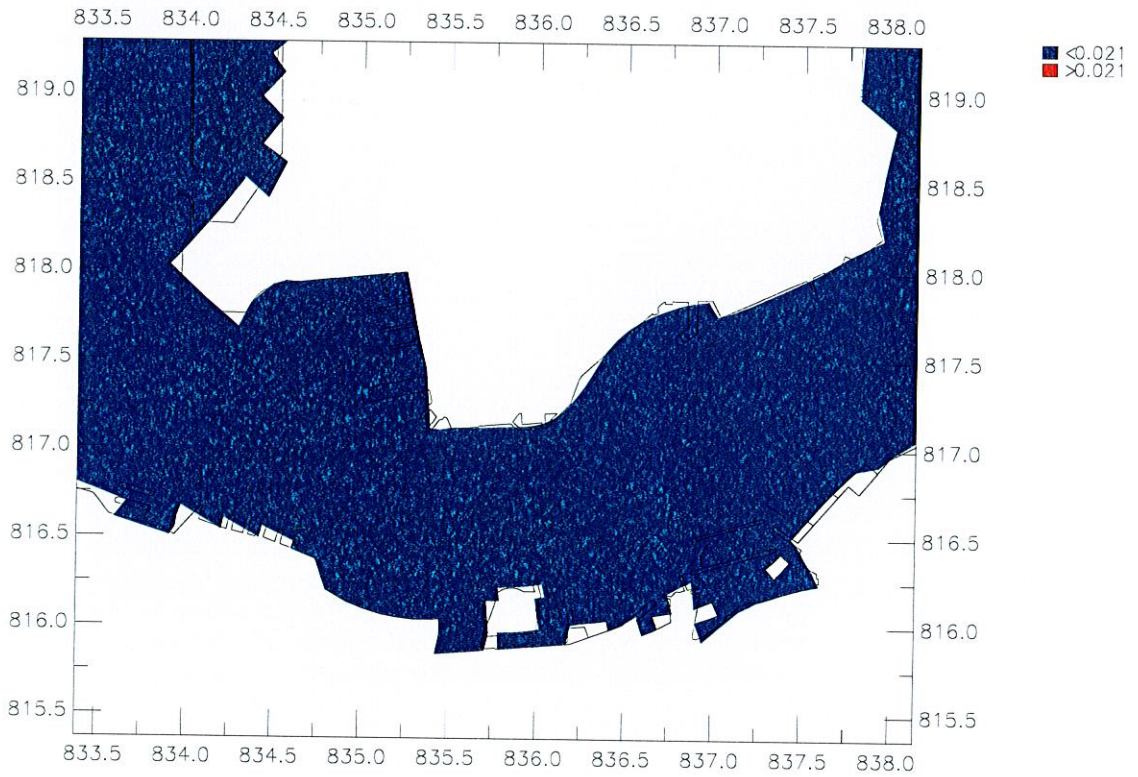
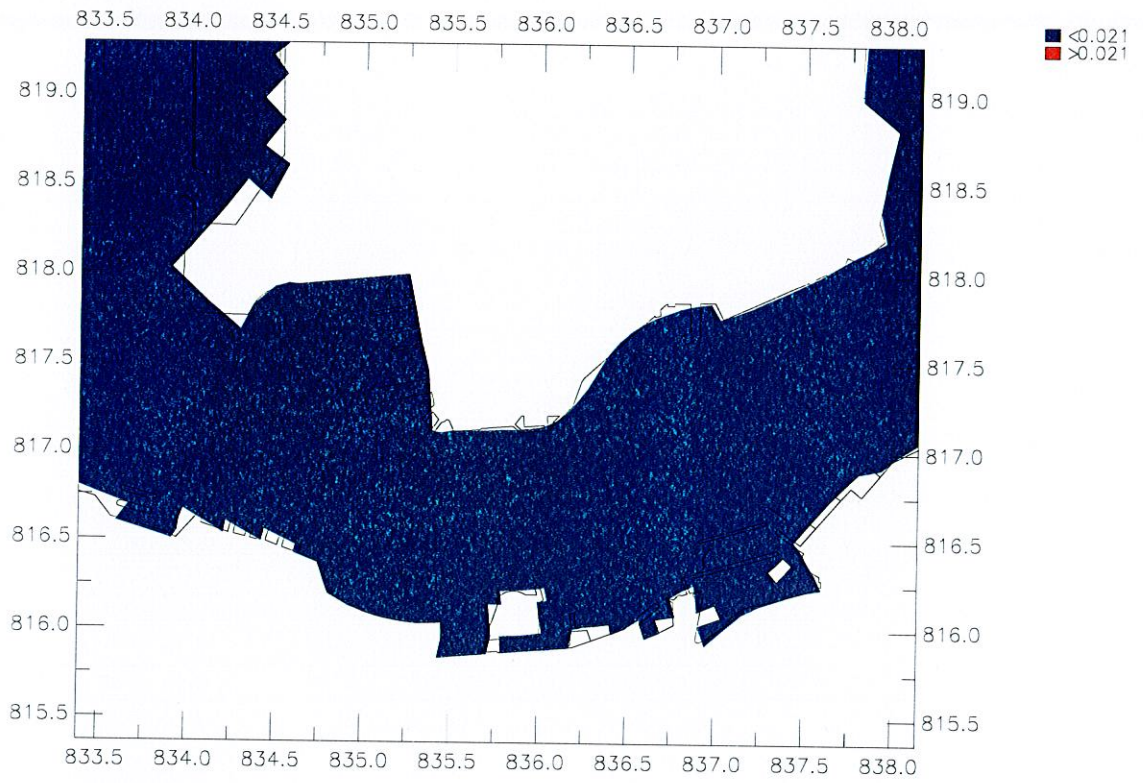
Appendix

Construction Scenario 2C

Maunsell

WQ/Detailled/Tracers/Plot

Scn2C-MZ.ssn



Agreement No. CE 54/2001 (CE) Wan Chai Development Phase II: Planning And Engineering Review

Mixing Zone of Unionized Ammonia under Scenario 2C

Upper: Wet Season; Lower: Dry Season; Red: value exceeded WQO for UIA

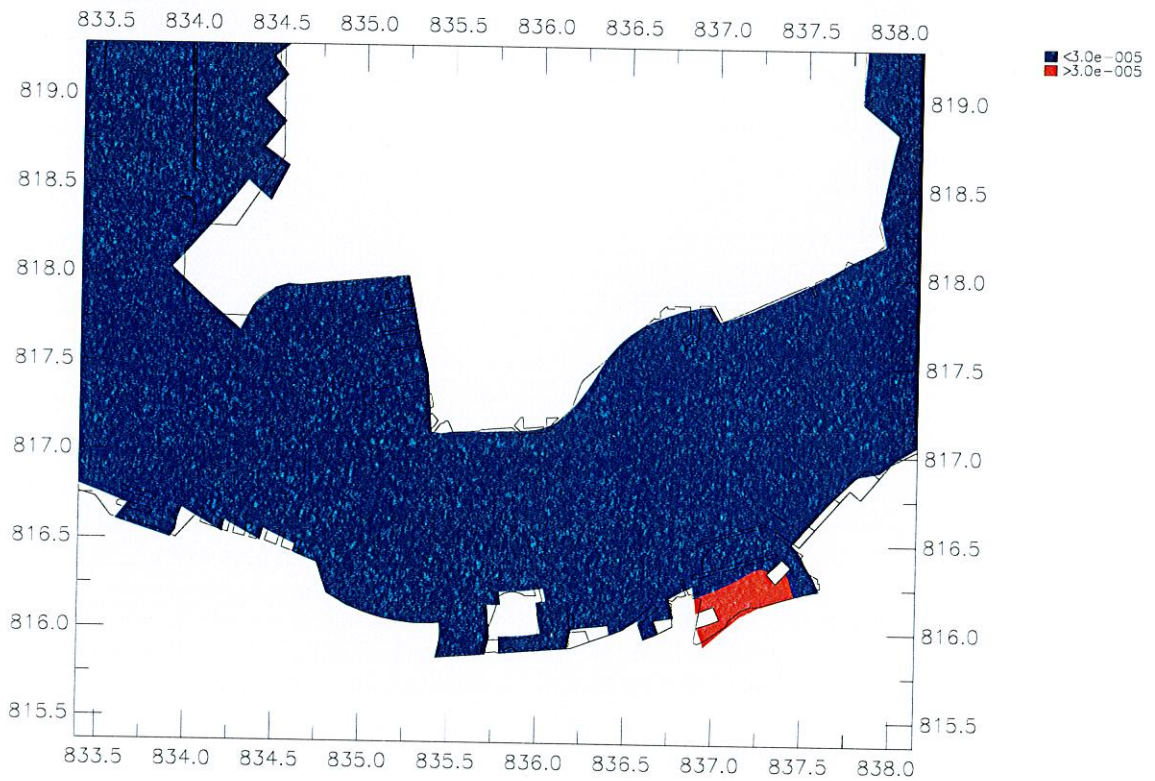
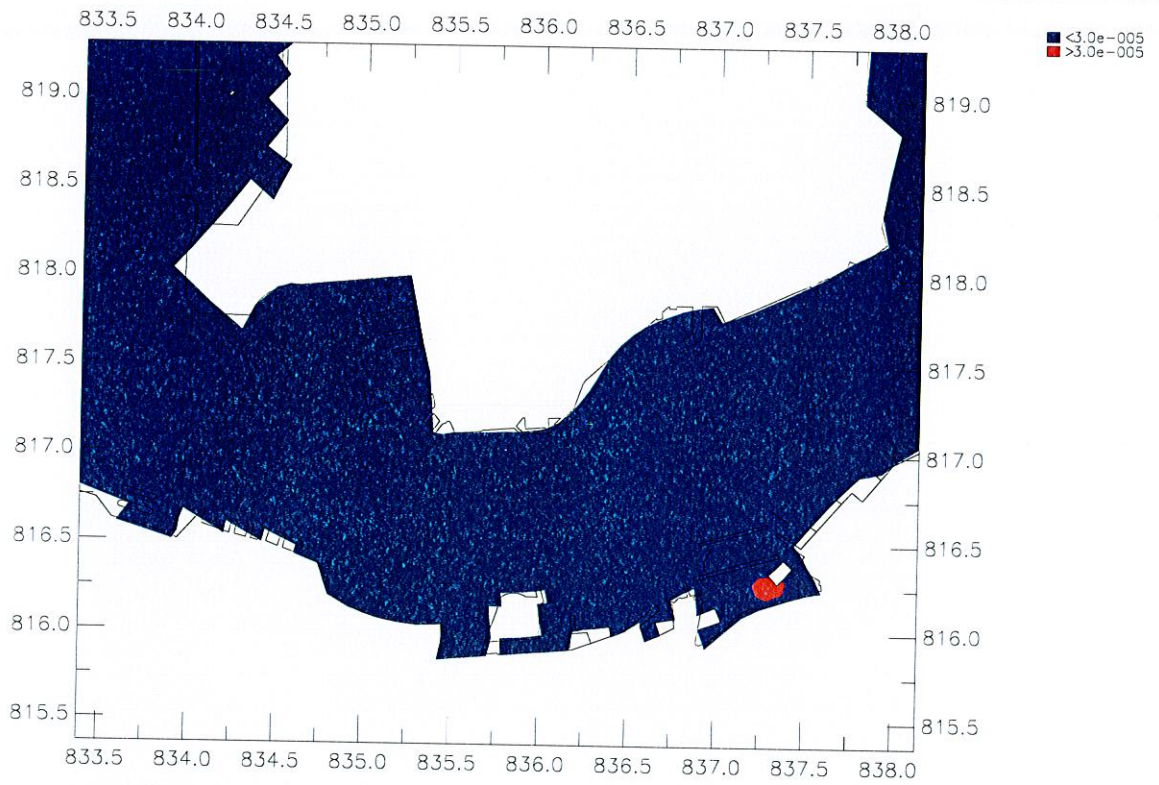
Appendix

Construction Scenario 2C

Maunsell

WQ/Detailed/Tracers/Plot

Scn2C-MZ.ssn



Agreement No. CE 54/2001 (CE) Wan Chai Development Phase II; Planning And Engineering Review

Mixing Zone of Polychlorinated Biphenyls under Scenario 2C

Upper: Wet Season; Lower: Dry Season; Red: value exceeded WQO for PCB

Appendix

Construction Scenario 2C

Maunsell

WQ/Detailled/Tracers/Plot

Scn2C-MZ.ssn