

Widening of Tuen Mun Road at Tsing Tin Interchange
Tree Assessment Schedule - Within Castle Peak Road (San Hui) Park
(Trees under jurisdiction of LCSD)

Drawing No: HLUNT1073-LA2001

Tree no. 1 to no. 443 were assessed from 22 Feb. 07 pm to 13 March 07 pm; Tree no. 444 to no.471 were assessed on 14 May 2007 am; Tree no. 581 - 694 were assessed on : 21 & 29 August 2007

Tree no.	Photo no.	Tree Species (Botanical name)	Chinese Name (Hong Kong)	Tree Maintenance Dept.	Tree Size		Health		Form	Amenity Value			Survival Rate after Transplanting			Recommendation		Remarks ²	Engineering Justification for Felling or Transplanting ³
					Height (m)	Average crown spread (m)	Trunk diameter (m)	Good		Fair	Poor	High	Medium	Low	Retain	Transplant	Fell		
133		Plumetia rubra	雞蛋花	LCSD	3	3	0.22*	G	G	M	M	M	R			multiple stems			
134		Plumeria rubra	雞蛋花	LCSD	3	3	0.20*	G	G	M	M	M	R			multiple stems			
135		Eucalyptus tereticornis	細葉桉	LCSD	14	4	0.23	F	F	L	L	L	R			leaning upper trunk			
136		Eucalyptus tereticornis	細葉桉	LCSD	17	8	0.30	F	F	L	L	L	R			imbalanced canopy (pruning is required)	(c)		
137		Eucalyptus tereticornis	細葉桉	LCSD	17	7	0.26	F	F	L	L	L	R			slightly leaning lower trunk (pruning is required)	(c)		
138		Eucalyptus tereticornis	細葉桉	LCSD	17	9	0.38	F	F	M	L	L	R			with some exposed roots (pruning is required)	(c)		
155		Acacia confusa	台灣相思	LCSD	11	8	0.30	F	F	L	L	L	R			slightly crooked trunk, interlocking roots & branches	(a)		
156		Acacia confusa	台灣相思	LCSD	11	8	0.30	F	F	L	L	L	R			leaning trunk, interlocking roots & branches	(a)		
157		Albizia lebbek	大葉合歡	LCSD	10	9	0.31	F	F	L	L	L	R			slightly leaning lower trunk (pruning is required)	(a)		
158		Melaleuca quinquenervia	白千層	LCSD	10	7	0.30	F	G	M	L	L	R			sign of pest attack (pruning is required)	(a)		
159		Melaleuca quinquenervia	白千層	LCSD	5	2	0.15	F	F	L	M	L	R			broken upper trunk (pruning is required)	(a)		
160		Melaleuca quinquenervia	白千層	LCSD	9	4	0.29	F	G	M	L	L	R			sign of pest attack (pruning is required)	(a)		
161		Melaleuca quinquenervia	白千層	LCSD	9	4	0.25	F	G	M	L	L	R			sign of pest attack (pruning is required)	(a)		
162		Melaleuca quinquenervia	白千層	LCSD	15*	6*	0.34	G	G	M	L	L	R			(pruning is required)	(a)		
163		Melaleuca quinquenervia	白千層	LCSD	13	3	0.28	F	F	L	L	L	R			sign of pest attack, imbalanced canopy, interlocking roots & branches	(a) & (b)		
164		Acacia confusa	台灣相思	LCSD	14	7	0.34	F	F	L	L	L	R			roots & branches	(b)		
165		Acacia confusa	台灣相思	LCSD	6	4	0.15	F	F	L	L	L	R			leaning upper trunk (pruning is required)	(b)		
167		Acacia confusa	台灣相思	LCSD	10*	8*	0.30	F	F	L	M	L	R			leaning upper trunks, interlocking roots & branches	(b)		
168		Acacia confusa	台灣相思	LCSD	10*	9*	0.35	F	F	L	L	L	R			slightly crooked trunk, interlocking roots & branches	(b)		
169		Melaleuca quinquenervia	白千層	LCSD	7*	2*	0.13	F	F	L	M	L	R		T	leaning trunk, interlocking roots & branches	(b)		
170		Hibiscus tiliaceus	黃槿	LCSD	8*	5*	0.23	F	F	L	L	L	R			crooked upper trunk	(b)		
171		Hibiscus tiliaceus	黃槿	LCSD	9	9*	0.32	F	F	L	L	L	R			crooked upper trunk, interlocking roots & branches	(b)		
172		Acacia confusa	台灣相思	LCSD	13	6	0.35	F	F	L	L	L	R			slightly crooked upper trunk, interlocking roots & branches	(a) & (b)		
173		Acacia confusa	台灣相思	LCSD	13	7	0.27	F	F	L	L	L	R			branches	(a)		
174		Acacia confusa	台灣相思	LCSD	11	6	0.30	F	F	L	L	L	R			slightly leaning trunk, interlocking roots & branches	(a)		
181		Melaleuca quinquenervia	白千層	LCSD	10*	5*	0.30	F	F	L	L	L	R			slightly leaning trunk	(c)		
182		Acacia confusa	台灣相思	LCSD	11	6	0.23	F	F	L	L	L	R			leaning upper trunk			
183		Gossampinus malabarica	木棉	LCSD	14	7	0.45	G	G	M	L	L	R			(adjacent to the site)			
184		Morus alba	桑	LCSD	7	6*	0.25	G	F	L	M	L	R			slightly leaning trunk (adjacent to the site)			
185		Albizia lebbek	大葉合歡	LCSD	12	8	0.30	G	G	M	L	L	R			imbalanced canopy (adjacent to the site)			
186		Aleurites moluccana	石栗	LCSD	13	5*	0.20	G	G	M	L	L	R			broken co-dominant trunks			
187		Albizia lebbek	大葉合歡	LCSD	14	6*	0.30	F	F	L	M	L	R			leaning lower trunk (adjacent to the site)			
188		Hibiscus tiliaceus	黃槿	LCSD	6	4	0.30	G	F	L	L	L	R			slightly leaning upper trunk (adjacent to the site)			
189		Melaleuca quinquenervia	白千層	LCSD	10*	5	0.30	G	F	L	L	L	R			imbalanced canopy (adjacent to the site)			
190		Melaleuca quinquenervia	白千層	LCSD	11*	6	0.26	G	F	L	L	L	R			leaning trunk			
372		Acacia confusa	台灣相思	LCSD	9	6	0.26	G	F	L	L	L	R			multiple trunks (adjacent to the site)	(b)		
373		Hibiscus tiliaceus	黃槿	LCSD	12*	9*	0.60*	G	G	M	L	L	R			crooked upper trunk			
374		Melaleuca quinquenervia	白千層	LCSD	6	2	0.11	G	F	L	M	L	R			without foliage			
375		Acacia confusa	台灣相思	LCSD	10	7*	0.23	P	F	L	L	L	R			leaning upper trunk			
376		Acacia confusa	台灣相思	LCSD	8	4	0.20	F	F	L	L	L	R			leaning upper trunk			
377		Acacia confusa	台灣相思	LCSD	10	5	0.19	F	F	L	L	L	R			leaning upper trunk			
378		Hibiscus tiliaceus	黃槿	LCSD	7	5	0.19	F	P	L	M	L	R			crooked trunk			

Widening of Tuen Mun Road at Tsing Tin Interchange
Tree Assessment Schedule - Within Castle Peak Road (San Hin) Park
(Trees under jurisdiction of LCS/D)

Drawing No: HLUNT1073-LA2001

Tree no. 1 to no. 443 were assessed from 22 Feb. 07 pm to 13 March 07 pm; Tree no. 444 to no. 471 were assessed on 14 May 2007 am; Tree no. 581 - 694 were assessed on : 21 & 29 August 2007

Tree no.	Tree Photo no.	Tree Species (Botanical name)	Chinese Name (Hong Kong)	Tree Maintenance Dept.	Tree Size		Health	Form	Amenity			Survival Rate after Transplanting			Recommendation		Remarks ²	Engineering Justification for Felling or Transplanting ³
					Height (m)	Average crown spread (m)			Trunk diameter ¹ (m)	Good	Fair	Poor	High Value	Medium	Low	High		
428		Melaleuca quinquenervia	白千層	LCS/D	5	2	0.13	F	F	L	M	M	R				slightly leaning upper trunk	
429		Cinnamomum burmanni	陰香	LCS/D	7*	4	0.16	G	F	L	M	M	R				leaning upper trunk	
430		Cinnamomum burmanni	陰香	LCS/D	9*	5	0.21	G	F	L	M	M	R				slightly leaning upper trunk	
431		Cinnamomum burmanni	陰香	LCS/D	9	5	0.20	F	F	L	L	L	R				imbalanced canopy, some branches without foliage	
432		Cinnamomum burmanni	陰香	LCS/D	9*	4	0.38*	F	F	L	L	L	R				multiple trunks, some branches without foliage	
433		Cinnamomum burmanni	陰香	LCS/D	10	5	0.20	F	G	M	L	L	R				some branches without foliage	
434		Cinnamomum burmanni	陰香	LCS/D	13*	6*	0.30	G	G	M	L	L	R				leaning trunk	
435		Acacia confusa	台灣相思	LCS/D	11	7	0.38	G	F	L	L	L	R					
437		Melaleuca quinquenervia	白千層	LCS/D	10	5*	0.34	G	G	M	L	L	R					
438		Melaleuca quinquenervia	白千層	LCS/D	10	4*	0.30	G	G	M	L	L	R					
439		Acacia confusa	台灣相思	LCS/D	10	6*	0.39	P	F	L	L	L	R				without foliage	
440		Melaleuca quinquenervia	白千層	LCS/D	10	4	0.29	F	F	L	L	L	R				leaning upper trunk	
601		Acacia confusa	台灣相思	LCS/D	8	6	0.30	L	F	P	L	L	R					
602		Acacia confusa	台灣相思	LCS/D	7	4	0.26	L	P	P	L	L	R					
603		Peltophorum pterocarpum	雙翼豆	LCS/D	11*	9*	0.39	M	G	G	L	L	R				seriously leaning trunk, a lot of die-backs	
604		Eucalyptus tereticornis	細葉桉	LCS/D	15	8	0.42	M	G	G	L	L	R					
605		Eucalyptus tereticornis	細葉桉	LCS/D	12	8*	0.25*	M	G	G	L	L	R					
606		Eucalyptus tereticornis	細葉桉	LCS/D	14	7*	0.31	M	G	G	L	L	R					
607		Melaleuca quinquenervia	白千層	LCS/D	6	3	0.16	L	F	F	M	L	R					
608		Melaleuca quinquenervia	白千層	LCS/D	5	1	0.10	L	F	F	M	L	R					
609		Eucalyptus tereticornis	細葉桉	LCS/D	11	5	0.25	L	F	F	M	L	R					
610		Aleurtites moluccana	石栗	LCS/D	8	5	0.14	L	F	F	M	L	R					
611		Hibiscus tiliaceus	黃槿	LCS/D	14	9	0.54	L	F	F	M	L	R					
612		Hibiscus tiliaceus	黃槿	LCS/D	12	10	0.47	L	F	F	M	L	R					
613		Hibiscus tiliaceus	黃槿	LCS/D	12	8	0.38	L	F	F	M	L	R					
614		Hibiscus tiliaceus	黃槿	LCS/D	10	8	0.40	L	P	F	M	L	R					
615		Hibiscus tiliaceus	黃槿	LCS/D	9*	4	0.33*	L	P	F	M	L	R				one of the main trunks was broken	
616		Aleurtites moluccana	石栗	LCS/D	10	4	0.21	L	F	F	M	L	R				crooked trunk, with broken branches	
617		Albizia lebbek	大葉合歡	LCS/D	8	5	0.20	L	F	F	M	L	R					
618		Albizia lebbek	大葉合歡	LCS/D	13	9	0.40	L	G	F	M	L	R					
619		Albizia lebbek	大葉合歡	LCS/D	11	7*	0.30	L	P	F	M	L	R					
620		Aleurtites moluccana	石栗	LCS/D	12	4	0.27	L	P	F	M	L	R				the original main trunk was broken	
621		Cinnamomum burmanni	陰香	LCS/D	8	5	0.17*	L	F	F	M	L	R					
622		Cinnamomum burmanni	陰香	LCS/D	9	7	0.23	M	G	G	L	L	R					
623		Aleurtites moluccana	石栗	LCS/D	8*	4	0.15	L	F	F	M	L	R					
625		Celtis sinensis	朴樹	LCS/D	12*	9	0.33	M	G	G	L	L	R					
626		Aleurtites moluccana	石栗	LCS/D	11	5	0.22	L	F	F	M	L	R					
627		Sapium schiferum	烏柏	LCS/D	10	3	0.15	L	F	G	L	L	R					
628		Acacia confusa	台灣相思	LCS/D	7	3	0.12	L	F	G	L	L	R					
629		Melaleuca quinquenervia	白千層	LCS/D	10	4*	0.22	M	G	F	L	L	R					
630		Melaleuca quinquenervia	白千層	LCS/D	10	5	0.29	L	F	F	M	L	R					
631		Cinnamomum burmanni	陰香	LCS/D	13	7*	0.26	M	G	F	L	L	R					
632		Melaleuca quinquenervia	白千層	LCS/D	12	5	0.27	L	F	F	M	L	R					
633		Melaleuca quinquenervia	白千層	LCS/D	13	6	0.33	L	F	F	M	L	R					

Widening of Tuen Mun Road at Tsing Tin Interchange
Tree Assessment Schedule - Within Castle Peak Road (San Hui) Park
(Trees under jurisdiction of LCSD)

Drawing No: HLUNT1073-LA2001

Tree no. 1 to no. 443 were assessed from 22 Feb. 07 pm to 13 March 07 pm; Tree no. 444 to no.471 were assessed on 14 May 2007 am; Tree no. 581 - 694 were assessed on : 21 & 29 August 2007

Tree no.	Tree Photo no.	Tree Species (Botanical name)	Chinese Name (Hong Kong)	Tree Maintenance Dept.	Tree Size		Health			Form			Amenity Value			Survival Rate after Transplanting			Recommendation		Remarks ²	Engineering Justification for Felling or Transplanting ³
					Height (m)	Average crown spread (m)	Trunk diameter ¹ (m)	Good	Fair	Poor	Good	Fair	Poor	High	Medium	Low	Retain	Transplant	Fell			
634		Melaleuca quinquenervia	白千層	LCSD	13	5	0.38	L			F	G				L	R					
635		Melaleuca quinquenervia	白千層	LCSD	13	6*	0.37	M			G	G				L	R					
636		Syzygium hancei	韓氏海桃	LCSD	4.5*	3	0.13*	M			G	G				L	R					
637		Acacia confusa	台灣相思	LCSD	9	6*	0.25	L			F	F				L	R					
638		Acacia confusa	台灣相思	LCSD	13	9*	0.36	L			F	F				L	R					
639		Acacia confusa	台灣相思	LCSD	13	8	0.38	L			F	F				L	R					
642		Eucalyptus citrinodora	檸檬桉	LCSD	22	15	1.14	H			G	G				L	R					
643		Melaleuca quinquenervia	白千層	LCSD	15	8	0.67	M			F	F				L	R					
644		Eucalyptus sp.	桉屬	LCSD	5	4	0.14	L			F	G				L	R					
645		Aleurites moluccana	石栗	LCSD	15	6*	0.32	M			F	G				L	R					
646		Aleurites moluccana	石栗	LCSD	14	5*	0.27	L			F	F				L	R					
647		Aleurites moluccana	石栗	LCSD	13	7	0.29	M			G	G				L	R					
648		Melaleuca quinquenervia	白千層	LCSD	5	4	0.18	L			F	G				L	R					
649		Melaleuca quinquenervia	白千層	LCSD	7*	1	0.11	L			G	G				L	R					
650		Melaleuca quinquenervia	白千層	LCSD	10*	5*	0.25	M			G	G				L	R					
651		Melaleuca quinquenervia	白千層	LCSD	11	7*	0.37*	M			F	G				L	R					
652		Melaleuca quinquenervia	白千層	LCSD	16	9	0.80	H			F	G				L	R					
653		Bombax ceiba	木棉	LCSD	15	3	0.22	L			F	G				L	R					
654		Bombax ceiba	木棉	LCSD	14	3	0.22	L			F	G				L	R					
655		Melaleuca quinquenervia	白千層	LCSD	12	6	0.28	M			G	G				L	R					
656		Bombax ceiba	木棉	LCSD	12	7	0.50	M			F	G				L	R					
657		Albizia lebbek	大葉合歡	LCSD	12	10	0.40	H			G	G				L	R					
658		Sapium sebiferum	烏桕	LCSD	13	6*	0.28	H			G	G				L	R					
659		Bombax ceiba	木棉	LCSD	14	5	0.30	M			G	G				L	R					
660		Bombax ceiba	木棉	LCSD	10*	6*	0.27	L			F	G				L	R					
661		Melaleuca quinquenervia	白千層	LCSD	13*	9	0.75*	M			G	F				L	R					
662		Bombax ceiba	木棉	LCSD	15	5	0.30	L			F	G				L	R					
663		Zanthoxylum avicennae	砂櫟	LCSD	4*	4	0.11	L			G	F				L	R					
664		Bombax ceiba	木棉	LCSD	15	8	0.50	M			G	F				L	R					
665		Melaleuca quinquenervia	白千層	LCSD	7	2	0.10	L			F	F				L	R					
666		Melaleuca quinquenervia	白千層	LCSD	10	5	0.25	L			F	F				L	R					
667		Melaleuca quinquenervia	白千層	LCSD	13	5*	0.30	M			F	G				L	R					
668		Bombax ceiba	木棉	LCSD	15	9	0.42	M			G	G				L	R					
671		Bombax ceiba	木棉	LCSD	15	10*	0.60	M			G	F				L	R					
672		Cinnamomum camphora	樟	LCSD	13	8*	0.50	M			G	F				L	R					
673		Melaleuca quinquenervia	白千層	LCSD	12	5	0.30	M			G	F				L	R					
674		Melaleuca quinquenervia	白千層	LCSD	12	6	0.34	L			G	F				L	R					
675		Bombax ceiba	木棉	LCSD	13	7*	0.43	M			F	F				L	R					
676		Bombax ceiba	木棉	LCSD	10	5	0.28	L			G	G				L	R					
677		Aleurites moluccana	石栗	LCSD	11	5*	0.30	M			F	G				L	R					
678		Bombax ceiba	木棉	LCSD	13	6*	0.35*	L			G	G				L	R					
679		Bombax ceiba	木棉	LCSD	13	4	0.32	L			F	G				L	R					
680		Aleurites moluccana	石栗	LCSD	12*	4*	0.24	M			G	G				L	R					
681		Aleurites moluccana	石栗	LCSD	11	3	0.20	L			F	F				L	R					

Widening of Tuen Mun Road at Tsing Tin Interchange
Tree Assessment Schedule - Within Castle Peak Road (San Hui) Park
(Trees under jurisdiction of LCSD)

Drawing No: HLUNT1073-LA2001

Tree no. 1 to no. 443 were assessed from 22 Feb. 07 pm to 13 March 07 pm; Tree no. 444 to no. 471 were assessed on 14 May 2007 am; Tree no. 581 - 694 were assessed on : 21 & 29 August 2007

Tree no.	Photo no.	Tree Species (Botanical name)	Chinese Name (Hong Kong)	Tree Maintenance Dept.	Tree Size		Health	Form	Amenity Value	Survival Rate after Transplanting			Recommendation		Remarks ²	Engineering Justification for Felling or Transplanting ³
					Height (m)	Average crown spread (m)				Trunk diameter ¹ (m)	High	Medium	Low	Retain		
682		Aleurites moluccana	石栗	LCSD	9	3	0.23	L	F	G			L	R		
684		Melaleuca quinquenervia	白千層	LCSD	6	1.5*	0.10	L	G	G			R			
685		Melaleuca quinquenervia	白千層	LCSD	5	1	0.10	L	G	G			R			
686		Melaleuca quinquenervia	白千層	LCSD	5	1.5*	0.10	L	G	G			R			
687		Melaleuca quinquenervia	白千層	LCSD	13	6	0.40	L	F	G			R			
688		Melaleuca quinquenervia	白千層	LCSD	12*	5	0.33	M	G	G			L	R		
689		Melaleuca quinquenervia	白千層	LCSD	10*	5	0.30	L	F	F			L	R		
690		Melaleuca quinquenervia	白千層	LCSD	14	5	0.40	M	G	G			L	R		
691		Aleurites moluccana	石栗	LCSD	10	4	0.21	M	G	G			L	R		
692		Melaleuca quinquenervia	白千層	LCSD	12	5	0.29	M	G	G			L	R		
693		Dracontena marginata	紅邊鐵樹	LCSD	3	1	0.10	L	G	G			R			

Note : (i) * size adjustment during tree assessment

Remarks:

1. Trunk diameter of a tree refers to its diameter at breast height (i.e. measured at 1.3m above ground level) as per ETWB TCW No. 3/2006.
2. Special features such as Old and Valuable Trees, ecological, cultural, historical significance or large/ old trees and defects as identified.
3. Engineering (a) affected by road widening;
(b) affected by construction of noise barrier;

Summary:	172 trees recommended for <u>R</u> etaining
	2 trees recommended for <u>T</u> ransplanting
	11 trees recommended for <u>F</u> elling
Total:	185 trees

(Widening of Tuen Mun Road at Tsing Tin Interchange)
 Tree Assessment Schedule - Excluding Castle Peak Road (San Hui) Park
 (Trees under jurisdiction of LCSD)

Drawing No: HLUNTI073-LA2002 & 2003

Tree no.	Photo no.	Tree Species (Botanical name)	Chinese Name (Hong Kong)	Tree Maintenance Dept.	Tree Size		Health			Form	Amenity Value			Survival Rate after Transplanting			Recommendation		Remarks ²	Engineering Justification for Felling or Transplanting or Pruning ³
					Height (m)	Average crown spread (m)	Trunk diameter ¹ (m)	Good	Fair		Poor	Good	Fair	Poor	High	Medium	Low	Retain		
001	001	Melaleuca quinquenervia	白千層	LCSD	5	2	0.12	G	F	F	L	M	L						slightly leaning upper trunks	(a) & (b)
002	002	Thevetia peruviana	黃花夾竹桃	LCSD	5	2	0.10	G	F	F	L	M	R						crooked upper trunk	
003	003	Thevetia peruviana	黃花夾竹桃	LCSD	5	2	0.10	G	F	F	L	M	R						crooked upper trunk	
009	009	Acacia confusa	台灣相思	LCSD	8	7	0.27	G	F	F	L	M	R						leaning trunk, with interlocking roots & branches	(a) & (b)
010	010	Acacia confusa	台灣相思	LCSD	8	5	0.20	F	F	F	L	M	R						leaning trunk, with decayed small branches, with interlocking roots & branches	(b)
011	011	Acacia confusa	台灣相思	LCSD	8*	4*	0.18	F	F	F	L	M	R						slightly crooked trunk, with decayed small branches	(b) & (c)
014	014	Hibiscus tiliaceus	黃槿	LCSD	12	8	0.31	G	F	F	L	M	R						trunk splitting into two parts (pruning is required)	(b) & (c)
015	015	Acacia confusa	台灣相思	LCSD	8	5	0.23	F	F	F	L	M	R						leaning trunk with decayed small branches, with interlocking roots & branches	(b)
016	016	Melaleuca quinquenervia	白千層	LCSD	4	2	0.11	P	F	F	L	M	R						decaying, without foliage, with interlocking roots & branches	(a)
017	017	Acacia confusa	台灣相思	LCSD	12	6	0.29	F	F	F	L	M	R						leaning upper trunk, on slope with interlocking roots & branches	(b)
018	018	Hibiscus tiliaceus	黃槿	LCSD	12	6	0.28	F	F	F	L	M	R						leaning trunk, some of its roots have exposed, branches and roots interlocking with other trees	(b)
030	030	Hibiscus tiliaceus	黃槿	LCSD	12	7	0.26	F	F	P	L	M	R						substantially leaning trunk, with a cavity at bottom (pruning is required)	(b)
031	031	Acacia confusa	台灣相思	LCSD	11	6	0.23	F	F	F	L	M	R						slightly leaning upper trunk, with interlocking roots & branches	(b)
032	032	Acacia confusa	台灣相思	LCSD	13	5	0.26	F	F	F	L	M	R						slightly leaning upper trunk, with interlocking roots & branches	(b)
033	033	Hibiscus tiliaceus	黃槿	LCSD	9*	6*	0.19	F	P	P	L	M	R						substantially leaning trunk, with interlocking roots & branches	(b)
034	034	Hibiscus tiliaceus	黃槿	LCSD	8	5*	0.26	F	P	P	L	M	R						substantially leaning trunk, with interlocking roots & branches	(b)
035	035	Melaleuca quinquenervia	白千層	LCSD	7	2	0.16	F	F	P	L	M	R						slightly crooked trunk, suppressed canopy	(a)
036	036	Hibiscus tiliaceus	黃槿	LCSD	10	5	0.29	F	F	P	L	M	R						substantially leaning trunk	(b)
037	037	Acacia confusa	台灣相思	LCSD	11	4	0.16	F	F	F	L	M	R						slightly leaning upper trunk	(b)
038	038	Acacia confusa	台灣相思	LCSD	10	4	0.23	F	F	F	L	M	R						slightly leaning trunk	(b)
042	042	Acacia confusa	台灣相思	LCSD	12	6	0.24	F	F	F	L	M	R						slightly crooked trunk, with interlocking roots & branches	(b)
044	044	Acacia confusa	台灣相思	LCSD	13	8*	0.25	F	F	F	L	M	R						slightly leaning upper trunk, with interlocking roots & branches	(a)
045	045	Acacia confusa	台灣相思	LCSD	11	8*	0.27	F	F	F	L	M	R						slightly leaning trunk, with interlocking roots & branches	(a)
046	046	Thevetia peruviana	黃花夾竹桃	LCSD	5	2	0.10	F	F	F	L	M	R						leaning upper trunk, with interlocking roots & branches	(a) & (b)
047	047	Acacia confusa	台灣相思	LCSD	6	2	0.20	P	P	P	L	M	R						decaying, without foliage, with interlocking roots & branches	(a)
048	048	Hibiscus tiliaceus	黃槿	LCSD	11	8	0.55*	F	F	F	L	M	R						leaning trunk, crooked upper trunks, with interlocking roots & branches	(b)
049	049	Acacia confusa	台灣相思	LCSD	10	2	0.15	F	F	F	L	M	R						crooked upper trunk, suppressed canopy, with interlocking roots & branches	(b)
050	050	Hibiscus tiliaceus	黃槿	LCSD	12	8*	0.28	F	F	F	L	M	R						leaning lower trunk, with interlocking roots & branches	(b)
051	051	Hibiscus tiliaceus	黃槿	LCSD	12	7	0.40*	F	F	F	L	M	R						leaning twin trunks, some roots have exposed, with interlocking roots & branches	(b)

(Widening of Tuen Mun Road at Tsing Tin Interchange)
Tree Assessment Schedule - Excluding Castle Peak Road (San Hui) Park
(Trees under jurisdiction of LCSD)

Drawing No: HLUNT1073-LA2002 & 2003

Tree no.	Tree Photo no.	Tree Species (Botanical name)	Chinese Name (Hong Kong)	Tree Maintenance Dept.	Tree Size		Health			Form	Amenity Value			Survival Rate after Transplanting			Recommendation		Remarks ²	Engineering Justification for Felling or Transplanting or Pruning ³
					Height (m)	Average crown spread (m)	Trunk diameter ¹ (m)	Good	Fair		Poor	High	Medium	Low	High	Medium	Low	Retain		
052		Hibiscus tiliaceus	黃槿	LCSD	10	4	0.15	F	F	P	L	L	L	L	L	L	crooked trunk, with interlocking roots & branches	(b)		
053		Acacia confusa	台灣相思	LCSD	9	2*	0.14	F	F	F	L	L	L	L	L	leaning trunk, with interlocking roots & branches	(b)			
054		Hibiscus tiliaceus	黃槿	LCSD	12	6*	0.27	F	F	F	L	L	L	L	L	leaning trunk, with interlocking roots & branches	(a)			
055		Hibiscus tiliaceus	黃槿	LCSD	11	4	0.17	F	F	P	L	L	L	L	L	crooked trunk, with interlocking roots & branches	(b)			
056		Hibiscus tiliaceus	黃槿	LCSD	13	7	0.45*	F	F	F	L	L	L	L	L	leaning twin trunks, with interlocking roots & branches	(a)			
057		Hibiscus tiliaceus	黃槿	LCSD	12	7	0.23	F	F	F	L	L	L	L	L	co-dominant stems, some roots have exposed, with interlocking roots & branches	(a)			
058		Acacia confusa	台灣相思	LCSD	12	4	0.23	F	F	F	L	L	L	L	L	leaning trunk, with interlocking roots & branches	(a)			
059		Hibiscus tiliaceus	黃槿	LCSD	11	7	0.50*	F	F	F	L	L	L	L	L	leaning trunks, with interlocking roots & branches	(a) & (b)			
060		Acacia confusa	台灣相思	LCSD	11*	6	0.27	F	F	F	L	L	L	L	L	slightly crooked trunk, with interlocking roots & branches	(a) & (b)			
061		Melaleuca quinquenervia	白千層	LCSD	12	4	0.22	F	F	F	L	L	L	L	L	co-dominant stems, with interlocking roots & branches	(b)			
062		Acacia confusa	台灣相思	LCSD	12*	6	0.30	F	F	F	L	L	L	L	L	slightly crooked trunk, with interlocking roots & branches	(b)			
063		Gossampinus malabarica	木棉	LCSD	13	4	0.21	F	F	F	L	L	L	L	L	with fewer branches than a normal one of same size, with interlocking roots & branches	(a) & (b)			
064		Hibiscus tiliaceus	黃槿	LCSD	12	8	0.39	F	F	P	L	L	L	L	L	substantially leaning trunk, with interlocking roots & branches	(a) & (b)			
065		Melia azedarach	森樹	LCSD	13	7	0.43	F	F	G	M	L	L	L	L	co-dominant stems, with interlocking roots & branches	(b)			
066		Thevetia peruviana	黃花夾竹桃	LCSD	6	3	0.18*	F	F	F	L	L	L	L	L	branches	(a)			
067		Macaranga tamaris	血桐	LCSD	6	3	0.11	F	F	P	L	M	M	M	M	twin stems, one leaning	(a)			
068		Hibiscus tiliaceus	黃槿	LCSD	11	6	0.40*	F	F	F	L	L	L	L	L	crooked trunk	-			
069		Melia azedarach	森樹	LCSD	13	10*	0.53	G	F	G	M	L	L	L	L	twin trunks, slightly crooked	-			
070		Acacia confusa	台灣相思	LCSD	13*	7	0.31	F	F	F	L	L	L	L	L	Substantial crown and root pruning is required	(a)			
071		Melaleuca quinquenervia	白千層	LCSD	12	4	0.27	F	F	F	L	L	L	L	L	leaning trunk, roots interlocking with others (pruning is required)	(a)			
077		Celtis sinensis	朴樹	LCSD	7*	2.5*	0.12	F	F	F	L	L	L	L	L	co-dominant stems, roots interlocking with others	(c)			
191		Acacia confusa	台灣相思	LCSD	9*	5	0.30	F	F	F	L	M	M	M	M	slightly crooked trunk	-			
192		Hibiscus tiliaceus	黃槿	LCSD	9*	5	0.22	F	F	F	L	L	L	L	L	slightly leaning trunk	-			
193		Thevetia peruviana	黃花夾竹桃	LCSD	3*	3	0.17	F	F	F	L	L	L	L	L	slightly crooked trunk	-			
194		Acacia confusa	台灣相思	LCSD	12	6*	0.26	F	F	F	L	M	M	M	M	crooked upper trunks	-			
195		Acacia confusa	台灣相思	LCSD	8	5*	0.22	F	F	F	L	L	L	L	L	slightly crooked trunk	-			
196		Thevetia peruviana	黃花夾竹桃	LCSD	5	2	0.12	G	F	F	L	L	L	L	L	leaning upper trunk	-			
197		Hibiscus tiliaceus	黃槿	LCSD	12	8*	0.45	G	F	F	L	M	M	M	M	slightly leaning lower trunk	-			
198		Thevetia peruviana	黃花夾竹桃	LCSD	6	4	0.30*	G	F	F	L	L	L	L	L	slightly leaning trunk, with a cavity	-			
199		Acacia confusa	台灣相思	LCSD	8	7	0.18	F	F	F	L	M	M	M	M	leaning upper trunks	-			
200		Acacia confusa	台灣相思	LCSD	5	4*	0.14	P	F	F	L	L	L	L	L	leaning trunk, with cracked bark	-			
201		Melaleuca quinquenervia	白千層	LCSD	12	4*	0.24	G	F	F	L	L	L	L	L	leaning trunk, part of the trunk decayed	-			
202		Acacia confusa	台灣相思	LCSD	12	7	0.25*	F	F	F	L	L	L	L	L	slightly twisted trunk	-			
268		Acacia confusa	台灣相思	LCSD	12	7	0.24	F	F	F	L	L	L	L	L	with broken branches (pruning is required)	(c)			
270		Cinnamomum burmanni	陰香	LCSD	6*	3	0.10	F	F	F	L	L	L	L	L	leaning trunk (pruning is required)	(c)			
271		Acacia confusa	台灣相思	LCSD	9*	2	0.12	F	F	F	L	M	M	M	M	crooked upper trunk	(c)			
272		Acacia confusa	台灣相思	LCSD	9	3	0.14	F	F	F	L	L	L	L	L	crooked upper trunk	(c)			
273		Melaleuca quinquenervia	白千層	LCSD	9*	3	0.14	F	F	F	L	L	L	L	L	leaning upper trunk	-			
274		Acacia confusa	台灣相思	LCSD	11	3	0.14	F	F	F	L	L	L	L	L	crooked upper trunk	-			

(Widening of Tuen Mun Road at Tsing Tin Interchange)
 Tree Assessment Schedule - Excluding Castle Peak Road (San Hut) Park
 (Trees under jurisdiction of LCSD)

Drawing No.: HLUNT1073-LA2002 & 2003

Tree no.	Photo no.	Tree Species (Botanical name)	Chinese Name (Hong Kong)	Tree Maintenance Dept.	Tree Size		Health			Form	Amenity			Survival Rate after Transplanting			Recommendation			Remarks ²	Engineering Justification for Felling or Transplanting or Pruning ³
					Height (m)	Average crown spread (m)	Trunk diameter ¹ (m)	Good	Fair		Poor	Good	Fair	Poor	High Value	Medium	Low	High	Medium		
275		Acacia confusa	台灣相思	LCSD	8	2	0.13	F		F		L								suppressed canopy	
276		Acacia confusa	台灣相思	LCSD	8	2*	0.10	F		F		L								leaning trunk	
277		Acacia confusa	台灣相思	LCSD	9*	4	0.12	F		F		L								imbalanced canopy	
278		Acacia confusa	台灣相思	LCSD	14	7*	0.23	G		F		L								imbalanced canopy (pruning is required)	(c)
281		Hibiscus tiliaceus	黃槿	LCSD	14	6*	0.20	F		F		L								slightly crooked trunk (pruning is required)	(c)
282		Acacia confusa	台灣相思	LCSD	12*	10*	0.34	F		F		L								leaning trunk (pruning is required)	(c)
283		Acacia confusa	台灣相思	LCSD	14	6	0.30	G		F		L								slightly crooked upper trunk	
284		Acacia confusa	台灣相思	LCSD	13	7	0.30	G		F		L								slightly leaning upper trunk	
285		Acacia confusa	台灣相思	LCSD	13	4	0.17	G		F		L								slightly crooked trunk	
286		Acacia confusa	台灣相思	LCSD	14	7*	0.18	F		F		L								leaning upper trunk	
287		Acacia confusa	台灣相思	LCSD	13	8*	0.22	F		F		L								leaning upper trunk	
288		Acacia confusa	台灣相思	LCSD	9	6	0.18	F		F		L								leaning upper trunk	
289		Acacia confusa	台灣相思	LCSD	10	8	0.28*	F		F		L								crooked upper trunks	
290		Acacia confusa	台灣相思	LCSD	8	4	0.22	F		F		L								leaning upper trunk	
291		Hibiscus tiliaceus	黃槿	LCSD	8	5	0.16	F		F		L								crooked upper trunk	
292		Acacia confusa	台灣相思	LCSD	11	3	0.16	F		F		L								crooked upper trunk	
293		Hibiscus tiliaceus	黃槿	LCSD	8	7	0.15	F		F		L								crooked upper trunk	
294		Acacia confusa	台灣相思	LCSD	9	4	0.20	F		F		L								broken trunk, with interlocking roots & branches	(b)
295		Acacia confusa	台灣相思	LCSD	12	6	0.28	F		F		L								leaning trunk	
296		Albizia lebbek	大葉合歡	LCSD	10*	3	0.13	F		F		L								slightly crooked trunk	
297		Acacia confusa	台灣相思	LCSD	9	4	0.18	F		F		L								crooked upper trunk	
298		Acacia confusa	台灣相思	LCSD	11	3	0.25	F		F		L								leaning trunk	
299		Acacia confusa	台灣相思	LCSD	12	4*	0.17	F		F		L								crooked upper trunk	
300		Acacia confusa	台灣相思	LCSD	12	4	0.20	F		F		L								leaning trunk	
301		Acacia confusa	台灣相思	LCSD	13	7*	0.19	F		F		L								slightly crooked upper trunk	
302		Thevetia peruviana	黃花夾竹桃	LCSD	6	4	0.12	G		F		L								slightly leaning upper trunk	
303		Thevetia peruviana	黃花夾竹桃	LCSD	5	4	0.11	F		F		L								slightly leaning upper trunk	
304		Melaleuca quinquenervia	白千層	LCSD	9	2	0.11	F		F		L								crooked upper trunk	
305		Acacia confusa	台灣相思	LCSD	13	7*	0.22	F		F		L								suppressed canopy	
306		Thevetia peruviana	黃花夾竹桃	LCSD	7	4	0.10	F		F		L								leaning upper trunk	
308		Hibiscus tiliaceus	黃槿	LCSD	12	3	0.12	F		F		L								slightly crooked trunk	
309		Melaleuca quinquenervia	白千層	LCSD	12	8*	0.34	G		F		L								leaning trunk	
310		Melaleuca quinquenervia	白千層	LCSD	10	3	0.15	F		F		L								leaning upper trunk	
311		Melaleuca quinquenervia	白千層	LCSD	13*	5*	0.36	F		F		L								leaning upper trunk	
312		Melaleuca quinquenervia	白千層	LCSD	13	4	0.25	F		F		L								slightly leaning trunk	
313		Melaleuca quinquenervia	白千層	LCSD	10	3	0.18	F		F		L								slightly leaning trunk	
314		Acacia confusa	台灣相思	LCSD	14	3	0.25	F		F		L								crooked upper trunk	
315		Melaleuca quinquenervia	白千層	LCSD	13	10*	0.27	F		F		L								slightly leaning trunk	
316		Acacia confusa	台灣相思	LCSD	9*	2	0.11	F		F		L								slightly crooked upper trunk	
317		Acacia confusa	台灣相思	LCSD	12	2	0.17	F		F		L								leaning upper trunk	
318		Albizia lebbek	大葉合歡	LCSD	13	4	0.16	G		F		L								slightly crooked trunk	
319		Melaleuca quinquenervia	白千層	LCSD	11	7	0.22	F		F		L								slightly crooked upper trunk	
320		Acacia confusa	台灣相思	LCSD	9	2	0.14	F		F		L								slightly leaning trunk	
321		Hibiscus tiliaceus	黃槿	LCSD	13	8	0.30*	F		F		L								crooked upper trunk	
322		Acacia confusa	台灣相思	LCSD	7	5	0.10	G		F		L								slightly crooked upper trunks (pruning is required)	(b)
323		Acacia confusa	台灣相思	LCSD	12	4*	0.16	G		F		L								crooked upper trunk	
				LCSD	13	6*	0.21	F		F		L								slightly crooked upper trunk	

(Widening of Tuen Mun Road at Tsing Tin Interchange)
 Tree Assessment Schedule - Excluding Castle Peak Road (San Hui) Park
 (Trees under jurisdiction of LCSD)

Drawing No: HLUNT1073-LA.2002 & 2003

Tree no.	Tree Photo no.	Tree Species (Botanical name)	Chinese Name (Hong Kong)	Tree Maintenance Dept.	Tree Size			Health	Form	Amenity Value			Survival Rate after Transplanting			Recommendation		Remarks ²	Engineering Justification for Felling or Transplanting or Pruning ³			
					Height (m)	Average crown spread (m)	Trunk diameter ¹ (m)			Good	Fair	Poor	High	Medium	Low	High	Medium			Low	Retain	Transplant
324		Acacia confusa	台灣相思	LCSD	11	2	0.13	F	F		L	L	L			slightly leaning trunk						
325		Acacia confusa	台灣相思	LCSD	13	3	0.16	F	F		L	L	L			crooked upper trunk						
326		Acacia confusa	台灣相思	LCSD	13	5	0.19	F	F		L	L	L			leaning upper trunk						
327		Acacia confusa	台灣相思	LCSD	12	3	0.16	F	F		L	L	L			crooked upper trunk						
328		Hibiscus tiliaceus	黃槿	LCSD	14	8	0.33	F	F		L	L	L			crooked upper trunk						
329		Hibiscus tiliaceus	黃槿	LCSD	14	8	0.35	F	F		L	L	L			crooked upper trunk						
330		Melaleuca quinquenervia	白千層	LCSD	13	4	0.28	F	F		L	L	L			leaning upper trunk						
331		Melaleuca quinquenervia	白千層	LCSD	13	2	0.18	F	F		L	L	L			roots interlocking with those of another tree						
332		Acacia confusa	台灣相思	LCSD	14	6*	0.20	F	F		L	L	L			suppressed canopy						
333		Hibiscus tiliaceus	黃槿	LCSD	7	3	0.10	F	F		L	L	L			leaning upper trunk						
334		Melaleuca quinquenervia	白千層	LCSD	10*	3	0.20	F	F		L	L	L			crooked upper trunk						
335		Melaleuca quinquenervia	白千層	LCSD	11*	4	0.25	F	G		L	L	L			slightly leaning upper trunk						
336		Acacia confusa	台灣相思	LCSD	9	3	0.13	F	F		L	L	L			leaning upper trunk						
337		Albizia lebbek	大葉合歡	LCSD	9	6	0.21	F	F		L	L	L			leaning upper trunk						
338		Acacia confusa	台灣相思	LCSD	12*	8*	0.33	F	F		L	L	L			leaning trunk (pruning is required)	(b)					
339		Melaleuca quinquenervia	白千層	LCSD	8	2	0.11	F	F		L	L	L			leaning upper trunk						
353		Acacia confusa	台灣相思	LCSD	9*	4	0.14	F	F		L	L	L			leaning upper trunk						
354		Acacia confusa	台灣相思	LCSD	11	4	0.19	F	F		L	L	L			leaning upper trunk						
355		Bauhinia spp.	洋紫荊	LCSD	9	5	0.23	G	F		L	L	L			leaning upper trunk						
356		Bauhinia spp.	洋紫荊	LCSD	6	3*	0.12	F	F		L	L	L			leaning upper trunk						
357		Bauhinia spp.	洋紫荊	LCSD	7	3	0.14	F	F		L	L	L			slightly crooked trunk, imbalanced canopy						
358		Acacia confusa	台灣相思	LCSD	10	5	0.25	F	F		L	L	L			broken upper trunk						
359		Acacia confusa	台灣相思	LCSD	11	5	0.25	F	F		L	L	L			imbalanced canopy						
360		Bauhinia blakeana	洋紫荊	LCSD	6	3	0.26	F	F		L	L	L			slightly crooked trunk						
361		Acacia confusa	台灣相思	LCSD	5	3	0.20	F	P		L	L	L			crooked trunk						
362		Gossampinus malabarica	木棉	LCSD	12*	6*	0.35*	G	G		L	L	L			topped trunk						
363		Gossampinus malabarica	木棉	LCSD	5*	3*	0.16	F	P		L	L	L			topped trunk						
364		Gossampinus malabarica	木棉	LCSD	12*	6*	0.35	F	G		L	L	L			topped trunk						
365		Gossampinus malabarica	木棉	LCSD	5	2	0.15	F	P		L	L	L			topped trunk						
366		Gossampinus malabarica	木棉	LCSD	12	7*	0.30	G	G		L	L	L			topped trunk						
367		Gossampinus malabarica	木棉	LCSD	10	3	0.20	F	F		L	L	L			imbalanced canopy						
368		Fucalypnus torrelliana	毛葉欖	LCSD	15	8*	0.38	G	G		L	L	L			co-dominant trunks						
369		Bischofia javanica	秋楓	LCSD	10	6	0.50*	G	G		L	L	L			topped trunk						
370		Celtis sinensis	朴樹	LCSD	3	2	0.15	F	P		L	L	L			topped trunk						
371		Liquidambar formosana	楓香	LCSD	2	1	0.12	F	P		L	L	L			topped trunk						
444		Melaleuca quinquenervia	白千層	LCSD	13	8	0.40	G	G		L	L	L			imbalanced canopy						
445		Melaleuca quinquenervia	白千層	LCSD	14	8	0.53	G	G		L	L	L			leaning upper trunk, imbalanced canopy with crossed branches, imbalanced canopy						
446		Melaleuca quinquenervia	白千層	LCSD	12	8	0.43	G	F		L	L	L									
447		Melaleuca quinquenervia	白千層	LCSD	7	4	0.20	G	F		L	L	L									
448		Melaleuca quinquenervia	白千層	LCSD	9*	4	0.20	G	F		L	L	L									
449		Melaleuca quinquenervia	白千層	LCSD	12	7	0.40	G	F		L	L	L									

(Widening of Tuen Mun Road at Tsing Tin Interchange)
 Tree Assessment Schedule - Excluding Castle Peak Road (San Hin) Park
 (Trees under Jurisdiction of LCSD)

Drawing No: HLUNTI073-LA2002 & 2003

Tree no.	Photo no.	Tree Species (Botanical name)	Chinese Name (Hong Kong)	Tree Maintenance Deptl.	Height (m)	Tree Size		Health	Form	Amenity Value		Survival Rate after Transplanting			Recommendation			Remarks ²	Engineering, Justification for Felling or Transplanting or Pruning ³
						Average crown spread (m)	Trunk diameter ¹ (m)			Good	Fair	Poor	High	Medium	Low	Retain	Transplant		
450	450	Acacia confusa	台灣相思	LCSD	9*	6	0.27	G	F	L	L	L							
451	451	Acacia confusa	台灣相思	LCSD	9	8	0.26	G	F	L	L	L							
452	452	Hibiscus tiliaceus	黃槿	LCSD	11	10*	0.40	G	F	L	L	L							
453	453	Hibiscus tiliaceus	黃槿	LCSD	11	10	0.55*	G	F	L	L	L							
454	454	Hibiscus tiliaceus	黃槿	LCSD	12	12	0.50	G	F	L	L	L							
455	455	Hibiscus tiliaceus	黃槿	LCSD	11	10	0.40	G	F	L	L	L							
456	456	Hibiscus tiliaceus	黃槿	LCSD	11	10	0.50*	G	F	L	L	L							
457	457	Melaleuca quinquenervia	白千層	LCSD	7	2	0.16	G	F	L	L	L							
458	458	Caryota ocellandra	魚尾葵	LCSD	6	2	0.13	G	G	M	M	M							
459	459	Caryota ocellandra	魚尾葵	LCSD	6	2	0.20	G	G	M	M	M							
460	460	Caryota ocellandra	魚尾葵	LCSD	4	1.5*	0.12	G	G	M	M	M							
461	461	Melaleuca quinquenervia	白千層	LCSD	5	2	0.10	G	F	L	L	L							
462	462	Caryota ocellandra	魚尾葵	LCSD	5	2	0.13	G	G	M	M	M							
463	463	Melaleuca quinquenervia	白千層	LCSD	7	2	0.13	G	F	L	L	L							
464	464	Caryota ocellandra	魚尾葵	LCSD	5	2	0.13	G	G	M	M	M							
465	465	Caryota ocellandra	魚尾葵	LCSD	5	2	0.14	G	G	M	M	M							
466	466	Caryota ocellandra	魚尾葵	LCSD	4	2	0.13	G	G	M	M	M							
467	467	Caryota ocellandra	魚尾葵	LCSD	5	2	0.13	G	G	M	M	M							
468	468	Caryota ocellandra	魚尾葵	LCSD	5	2	0.13	G	G	M	M	M							
469	469	Caryota ocellandra	魚尾葵	LCSD	5	2	0.13	G	G	M	M	M							
470	470	Melaleuca quinquenervia	白千層	LCSD	7	3	0.13	G	G	M	M	M							
471	471	Caryota ocellandra	魚尾葵	LCSD	5	2	0.13	G	G	M	M	M							
471	471	Caryota ocellandra	魚尾葵	LCSD	4	2	0.11	G*	G	M	M	M							

Note : * size adjustment during tree assessment

Remarks:

1. Trunk diameter of a tree refers to its diameter at breast height (i.e. measured at 1.3m above ground level) as per E71WB TCW No. 3/2006.
2. Special features such as Old and Valuable Trees, ecological, cultural, historical significance or large/ old trees and defects as identified.
3. Engineering justification:
 - (a) affected by road widening;
 - (b) affected by construction of noise barrier;

Summary: 145 trees recommended for Retaining
 3 trees recommended for Transplanting
 31 trees recommended for Felling
 Total: 179 trees

(Widening of Tuen Mun Road at Tsing Tin Interchange)
 Tree Assessment Schedule - Excluding Castle Peak Road (San Hui) Park
 (Trees under jurisdiction of HVD)

Drawing No. H1UNT1073-LA2002

Tree no.	Photo no.	Tree Species (Botanical name)	Chinese Name (Hong Kong)	Tree Maintenance Dept.	Tree Size			Health	Form	Amenity Value			Survival Rate after Transplanting			Recommendation			Remarks ²	Engineering Justification for Felling or Transplanting or Pruning ³
					Height (m)	Average crown spread (m)	Trunk diameter ¹ (m)			Good	Fair	Poor	High	Medium	Low	Retain	Transplant	Fell		
004	004	Melaleuca quinquenervia	白千層	HyD	12*	4*	0.20	G	F	L	L	L	R				Imbalanced canopy, on slope with interlocking roots & branches			
005	005	Acacia confusa	台灣相思	HyD	8	5	0.30	G	F	L	L	L	R				slightly leaning trunks, on slope with interlocking roots & branches			
006	006	Melaleuca quinquenervia	白千層	HyD	10	4*	0.28	G	F	L	L	L	R				co-dominant stems, on slope with interlocking roots & branches			
007	007	Acacia confusa	台灣相思	HyD	9	7	0.21	G	F	L	L	L	R				on slope with interlocking roots & branches			
008	008	Acacia confusa	台灣相思	HyD	10	5	0.18	G	F	L	L	L	R				topped trunk, on slope with interlocking roots & branches			
012	012	Acacia confusa	台灣相思	HyD	5	0.5*	0.15	F	P	L	M	L	R				slightly leaning trunk, on slope with interlocking roots & branches			
013	013	Melaleuca quinquenervia	白千層	HyD	14	5*	0.30	G	F	L	L	L	R				crooked upper trunk, on slope with interlocking roots & branches			
019	019	Melaleuca quinquenervia	白千層	HyD	4	2	0.12	F	F	L	M	L	R				crooked upper trunk, on slope with interlocking roots & branches			
020	020	Melaleuca quinquenervia	白千層	HyD	13	5*	0.26	F	F	L	L	L	R				co-dominant stems, roots and branches interlocking with other trees			
021	021	Hibiscus tiliaceus	黃槿	HyD	13	6	0.28	F	F	L	L	L	R				crooked upper trunk, on slope with interlocking roots & branches			
022	022	Melaleuca quinquenervia	白千層	HyD	13	4	0.26	F	F	L	L	L	R				co-dominant stems, on slope with interlocking roots & branches			
023	023	Hibiscus tiliaceus	黃槿	HyD	11	5	0.29	F	P	L	L	L	R				substantially leaning trunk, on slope with interlocking roots & branches			
024	024	Hibiscus tiliaceus	黃槿	HyD	12	6	0.26	F	F	L	L	L	R				slightly crooked trunk, on slope with interlocking roots & branches			
025	025	Acacia confusa	台灣相思	HyD	9	3*	0.15	F	F	L	L	L	R				slightly crooked trunk, suppressed canopy			
026	026	Acacia confusa	台灣相思	HyD	10*	4	0.16	F	F	L	L	L	R				slightly leaning trunk, on slope with interlocking roots & branches			
027	027	Acacia confusa	台灣相思	HyD	6	2	0.14	F	F	L	M	L	R				slightly crooked trunk, suppressed canopy, on slope with interlocking roots & branches			
028	028	Hibiscus tiliaceus	黃槿	HyD	10*	5	0.20	F	P	L	L	L	R				substantially leaning trunk, on slope with interlocking roots & branches			
029	029	Melaleuca quinquenervia	白千層	HyD	10	4	0.23	F	F	L	L	L	R				interlocking roots & branches			
039	039	Acacia confusa	台灣相思	HyD	12	6	0.29	F	G	L	L	L	R				slightly crooked trunk, on slope with interlocking roots & branches			
040	040	Acacia confusa	台灣相思	HyD	12	4	0.29	F	F	L	L	L	R				on slope with interlocking roots & branches			
041	041	Acacia confusa	台灣相思	HyD	9	4	0.21	F	F	L	L	L	R				slightly leaning trunk, with trimmed branches, on slope with interlocking roots & branches			
043	043	Acacia confusa	台灣相思	HyD	12	6*	0.26	F	F	L	L	L	R				broken upper trunk, on slope with interlocking roots & branches			
072	072	Cinnamomum burmanni	陰香	HyD	8	4	0.16	F	F	L	L	L	R				slightly leaning trunk, on slope with interlocking roots & branches			
073	073	Hibiscus tiliaceus	黃槿	HyD	11	7	0.28	F	F	L	L	L	R				one of the co-dominant trunks was broken, on slope with interlocking roots & branches			
074	074	Acacia confusa	台灣相思	HyD	12*	6	0.32	F	F	L	L	L	R				crooked upper trunk, on slope with interlocking roots & branches			
075	075	Melaleuca quinquenervia	白千層	HyD	6	1	0.15	F	F	L	M	L	R				crooked upper trunk, with exposed roots, on slope with interlocking roots & branches			
076	076	Acacia confusa	台灣相思	HyD	10	7	0.28	F	P	L	L	L	R				broken upper trunk			
																	substantially leaning trunk			

(Widening of Then Mun Road at Tsing Yin Interchange)
 Tree Assessment Schedule - Excluding Castle Peak Road (San Hui) Park
 (Trees under jurisdiction of HyD)

Drawing No: HI/LUNT/1073-LA/2002

Tree no.	Tree Photo no.	Tree Species (Botanical name)	Chinese Name (Hong Kong)	Tree Maintenance Dept.	Tree Size		Health		Form	Amenity Value			Survival Rate after Transplanting		Recommendation		Remarks ²	Engineering Justification for Felling or Transplanting or Pruning ³
					Height (m)	Average crown spread (m)	Trunk diameter ¹ (m)	Good		Fair	Poor	High	Medium	Low	Retain	Transplant		
078	078	Caryota ochlandra	魚尾葵	HyD	6	3.5*	0.80*	F	G	Good	M	M	R					
079	079	Caryota ochlandra	魚尾葵	HyD	6	2*	0.30*	F	F	Fair	L	L	R					
080	080	Caryota ochlandra	魚尾葵	HyD	5	2*	0.18*	F	F	Fair	L	L	R					
081	081	Caryota ochlandra	魚尾葵	HyD	6	3	0.45*	F	G	Good	M	M	R					suppressed crown
082	082	Melaleuca quinquenervia	白千層	HyD	7	4	0.22	G	G	Good	M	M	R					suppressed crown
084	084	Melaleuca quinquenervia	白千層	HyD	7	5	0.36	G	G	Good	M	M	R					
085	085	Melaleuca quinquenervia	白千層	HyD	7	3	0.20	G	G	Good	M	M	R					
086	086	Melaleuca quinquenervia	白千層	HyD	7	4	0.21	G	G	Good	M	M	R					
087	087	Melaleuca quinquenervia	白千層	HyD	6	4	0.20	G	G	Good	M	M	R					
088	088	Melaleuca quinquenervia	白千層	HyD	9	6	0.24	G	G	Good	M	M	R					
089	089	Melaleuca quinquenervia	白千層	HyD	8	3	0.18	G	F	Fair	L	L	R					
089	089	Melaleuca quinquenervia	白千層	HyD	7	3	0.20	G	F	Fair	L	L	R					
091	091	Melaleuca quinquenervia	白千層	HyD	7	4	0.21	G	G	Good	M	M	R					
092	092	Melaleuca quinquenervia	白千層	HyD	8	5	0.23	G	G	Good	M	M	R					
093	093	Melaleuca quinquenervia	白千層	HyD	7	4	0.22	G	G	Good	M	M	R					
094	094	Melaleuca quinquenervia	白千層	HyD	7	4	0.22	G	G	Good	M	M	R					
095	095	Melaleuca quinquenervia	白千層	HyD	10	4	0.24	G	G	Good	M	M	R					
096	096	Melaleuca quinquenervia	白千層	HyD	11	5	0.31	G	G	Good	M	M	R					
097	097	Dracaena marginata	紅邊鐵樹	HyD	6	4	0.21	G	G	Good	M	M	R					
098	098	Dracaena marginata	紅邊鐵樹	HyD	5	3	0.25*	G	G	Good	M	M	R					
099	099	Dracaena marginata	紅邊鐵樹	HyD	5	4	0.19	G	G	Good	M	M	R					
100	100	Dracaena marginata	紅邊鐵樹	HyD	5	2*	0.18*	G	G	Good	M	M	R					
101	101	Dracaena marginata	紅邊鐵樹	HyD	6	3	0.25*	G	G	Good	M	M	R					
102	102	Dracaena marginata	紅邊鐵樹	HyD	6	4	0.30*	G	G	Good	M	M	R					
102	102	Dracaena marginata	紅邊鐵樹	HyD	6*	3*	0.15*	G	G	Good	M	M	R					
103	103	Dracaena marginata	紅邊鐵樹	HyD	6*	3	0.20*	G	G	Good	M	M	R					
104	104	Dracaena marginata	紅邊鐵樹	HyD	7*	3	0.30*	G	G	Good	M	M	R					
105	105	Dracaena marginata	紅邊鐵樹	HyD	7	3	0.35*	G	G	Good	M	M	R					
106	106	Melaleuca quinquenervia	白千層	HyD	8*	5	0.32	G	G	Good	M	M	R					
107	107	Melaleuca quinquenervia	白千層	HyD	12	5	0.49	G	G	Good	M	M	R					
108	108	Melaleuca quinquenervia	白千層	HyD	7	4	0.25*	F	F	Fair	L	L	R					sign of pest attack
109	109	Melaleuca quinquenervia	白千層	HyD	5	3	0.12	F	F	Fair	L	L	R					imbalanced canopy
110	110	Melaleuca quinquenervia	白千層	HyD	10	6	0.30	F	F	Fair	L	L	R					sign of pest attack, slightly leaning trunk
111	111	Melaleuca quinquenervia	白千層	HyD	12	7	0.44	F	F	Fair	L	L	R					sign of pest attack
112	112	Melaleuca quinquenervia	白千層	HyD	11	6	0.40	G	F	Fair	L	L	R					slightly leaning trunk
113	113	Caryota ochlandra	魚尾葵	HyD	6	3	0.80*	F	G	Good	M	M	R					
114	114	Caryota ochlandra	魚尾葵	HyD	6	3	0.40*	F	G	Good	M	M	R					
115	115	Caryota ochlandra	魚尾葵	HyD	6	3	0.40*	F	F	Fair	L	L	R					multiple stems, with some yellowish foliage
116	116	Caryota ochlandra	魚尾葵	HyD	3.5*	1	0.15*	F	F	Fair	L	L	R					multiple stems, some broken
117	117	Caryota ochlandra	魚尾葵	HyD	5	2*	0.15*	F	F	Fair	L	L	R					multiple stems, with some yellowish foliage
118	118	Ficus microcarpa	細葉榕	HyD	13	10*	0.37	F	F	Fair	L	L	R					multiple stems, with a broken stem
119	119	Celtis sinensis	木荷	HyD	9	4	0.24	G	G	Good	M	M	R					a complete rootball cannot be prepared on site
120	120	Acacia confusa	台灣相思	HyD	12	5	0.27	F	F	Fair	L	L	R					suppressed canopy
121	121	Acacia confusa	台灣相思	HyD	13	10	0.29	F	F	Fair	L	L	R					crooked upper trunk
122	122	Acacia confusa	台灣相思	HyD	13	9	0.29	F	F	Fair	L	L	R					slightly leaning trunk, with decayed small branches
123	123	Melaleuca quinquenervia	白千層	HyD	6	3.5	0.23	F	F	Fair	L	L	R					slightly twisted trunk
124	124	Melaleuca quinquenervia	白千層	HyD	8	4	0.23	F	G	Good	M	M	R					sign of pest attack

(Widening of Tuen Mun Road at Tsing Tin Interchange)
 Tree Assessment Schedule - Excluding Castle Peak Road (San Hui) Park
 (Trees under jurisdiction of HyD)

Tree no.	Photo no.	Tree Species (Botanical name)	Chinese Name (Hong Kong)	Tree Maintenance Dept.	Tree Size		Health		Form	Amenity			Survival Rate after Transplanting			Recommendation			Remarks	Engineering Justification for Felling or Transplanting or Pruning ³
					Height (m)	Average crown spread (m)	Trunk diameter ¹ (m)	Good		Fair	Poor	Good	Fair	Poor	High	Medium	Low	Retain		
125		<i>Acacia confusa</i>	台灣相思	HyD	12	9	0.28	F	F	F	L	L	L	L	R			slightly leaning trunk, with decayed small branches		
126		<i>Acacia confusa</i>	台灣相思	HyD	12	9	0.23	G	F	F	L	L	L	L	R			slightly crooked trunk		
127		<i>Acacia confusa</i>	台灣相思	HyD	13	11	0.30	G	F	F	L	L	L	L	R			slightly crooked trunk		
128		<i>Gossampinus malabarica</i>	木棉	HyD	8	8*	0.33	F	F	F	L	L	L	L	R			on concrete surface, with previously broken trunk		
129		<i>Melaleuca quinquenervia</i>	白千層	HyD	9	4	0.22	G	F	F	L	L	L	L	R			on concrete surface, imbalanced canopy		
130		<i>Gossampinus malabarica</i>	木棉	HyD	3.5*	3	0.15	F	F	F	L	L	L	L	R			on concrete surface		
131		<i>Melaleuca quinquenervia</i>	白千層	HyD	12*	7	0.30	G	G	G	M	L	L	L	R			leaning upper trunk, on slope with interlocking roots & branches		
139		<i>Cinnamomum burmanni</i>	陰香	HyD	10	8*	0.29	G	F	F	L	L	L	L	R			sign of pest attack, on slope with interlocking roots & branches		
140		<i>Melaleuca quinquenervia</i>	白千層	HyD	12*	6	0.36	F	G	G	M	L	L	L	R			sign of pest attack, on slope with interlocking roots & branches		
141		<i>Melaleuca quinquenervia</i>	白千層	HyD	16	6	0.33	F	G	G	M	L	L	L	R			sign of pest attack, on slope with interlocking roots & branches		
142		<i>Melaleuca quinquenervia</i>	白千層	HyD	14	5	0.30	F	G	G	M	L	L	L	R			sign of pest attack, on slope with interlocking roots & branches		
143		<i>Cinnamomum burmanni</i>	陰香	HyD	8	7	0.20	G	F	F	L	L	L	L	R			crooked upper trunk, on slope with interlocking roots & branches		
144		<i>Melaleuca quinquenervia</i>	白千層	HyD	13	5	0.29	F	F	F	L	L	L	L	R			slightly leaning trunk, on slope with interlocking roots & branches		
145		<i>Melaleuca quinquenervia</i>	白千層	HyD	13	6	0.35	F	G	G	M	L	L	L	R			sign of pest attack, on slope with interlocking roots & branches		
146		<i>Melaleuca quinquenervia</i>	白千層	HyD	10	3	0.23	F	F	F	L	L	L	L	R			sign of pest attack, imbalanced canopy, on slope with interlocking roots & branches		
147		<i>Melaleuca quinquenervia</i>	白千層	HyD	13	6*	0.30	F	G	G	M	L	L	L	R			sign of pest attack, on slope with interlocking roots & branches		
148		<i>Melaleuca quinquenervia</i>	白千層	HyD	13	5	0.30	F	G	G	M	L	L	L	R			sign of pest attack, on slope with interlocking roots & branches		
149		<i>Melaleuca quinquenervia</i>	白千層	HyD	5	2	0.18	F	F	F	L	L	L	L	R			leaning trunk, on slope with interlocking roots & branches		
150		<i>Albizia lebbek</i>	大葉合歡	HyD	9	10	0.35	F	G	G	M	M	L	L	R			on slope with interlocking roots & branches		
151		<i>Melaleuca quinquenervia</i>	白千層	HyD	6	3	0.15	F	F	F	L	L	L	L	R			crooked upper trunk, on slope with interlocking roots & branches		
153		<i>Acacia confusa</i>	台灣相思	HyD	10	5	0.32	F	F	F	L	L	L	L	R			slightly crooked upper trunk, on slope with interlocking roots & branches		
175		<i>Acacia confusa</i>	台灣相思	HyD	6	5	0.25	F	F	F	L	L	L	L	R			slightly crooked trunk, on slope with interlocking roots & branches		
176		<i>Melia azedarach</i>	森樹	HyD	14	8	0.50*	F	G	G	M	L	L	L	R			twin trunks, on slope with interlocking roots & branches		
177		<i>Albizia lebbek</i>	大葉合歡	HyD	13	10*	0.30	F	G	G	M	L	L	L	R			multiple trunks (3 nos.), on slope with interlocking roots & branches		
178		<i>Acacia confusa</i>	台灣相思	HyD	11*	6*	0.28	F	F	F	L	L	L	L	R			slightly leaning upper trunk, on slope with interlocking roots & branches		
179		<i>Melia azedarach</i>	森樹	HyD	13	7*	0.35	F	F	F	L	L	L	L	R			one of co-dominant trunks had decayed, on slope with interlocking roots & branches		
180		<i>Melaleuca quinquenervia</i>	白千層	HyD	10*	6	0.30	F	G	G	M	L	L	L	R			sign of pest attack, on slope with interlocking roots & branches		
203		<i>Acacia confusa</i>	台灣相思	HyD	11	6	0.34	F	F	F	L	L	L	L	R			leaning trunk		
204		<i>Acacia confusa</i>	台灣相思	HyD	12	5	0.24	F	F	F	L	L	L	L	R			leaning upper trunk		

Tree no. 1 to no. 443 were assessed from 22 Feb. 07 pm to 13 March 07 pm; tree no. 444 to no.471 were assessed on 14 May 2007 am

(Widening of Tuen Mun Road at Tsing Im Interchange)
 Tree Assessment Schedule - Excluding Castle Peak Road (San Hui) Park
 (Trees under jurisdiction of HyD)

Drawing No: HLUNTI073-LA.2002

Tree no. 1 to no. 443 were assessed from 22 Feb. 07 pm to 13 March 07 pm; tree no. 444 to no.471 were assessed on 14 May 2007 am

Tree no.	Photo no.	Tree Species (Botanical name)	Chinese Name (Hong Kong)	Tree Maintenance Dept.	Tree Size			Health		Form	Amenity			Survival Rate after Transplanting			Recommendation			Remarks ²	Engineering Justification for Felling or Transplanting or Pruning ³
					Height (m)	Average crown spread (m)	Trunk diameter (m)	Good	Fair		Poor	High Value	Medium	Low	High	Medium	Low	Retain	Transplant		
205		Acacia confusa	台灣相思	HyD	7	1*	0.24	F	P	P	L	M							topped canopy		
206		Acacia confusa	台灣相思	HyD	14	8*	0.26	F	F	F	L	M							imbalanced canopy		
207		Melaleuca quinquenervia	白千層	HyD	6	2	0.12	F	F	F	L	M							slightly crooked upper trunks		
208		Acacia confusa	台灣相思	HyD	12	5	0.17	F	F	F	L	M							crooked upper trunk		
209		Hibiscus tiliaceus	黃薔	HyD	12	9	0.25	G	F	F	L	M							leaning trunk		
210		Hibiscus tiliaceus	黃薔	HyD	11	5	0.18	G	F	F	L	M							leaning trunk		
211		Acacia confusa	台灣相思	HyD	12	3	0.16	F	F	F	L	M							leaning trunk		
212		Acacia confusa	台灣相思	HyD	13	9*	0.26	F	F	F	L	M							slightly crooked trunk		
213		Melaleuca quinquenervia	白千層	HyD	7	3	0.15	F	F	F	L	M							crooked upper trunk		
214		Acacia confusa	台灣相思	HyD	8	3	0.13	F	F	F	L	M							suppressed canopy, on slope with interlocking roots & branches		
215		Acacia confusa	台灣相思	HyD	3	1*	0.16	F	P	P	L	M							topped canopy, on slope with interlocking roots & branches		
216		Acacia confusa	台灣相思	HyD	13	5	0.25	F	F	F	L	M							slightly crooked upper trunk, on slope with interlocking roots & branches		
217		Acacia confusa	台灣相思	HyD	14	6	0.20	F	F	F	L	M							leaning upper trunk, on slope with interlocking roots & branches		
218		Acacia confusa	台灣相思	HyD	15	8*	0.23	G	F	F	L	M							slightly crooked trunk, on slope with interlocking roots & branches		
219		Acacia confusa	台灣相思	HyD	13	7	0.30	F	F	F	L	M							leaning upper trunks, on slope with interlocking roots & branches		
220		Acacia confusa	台灣相思	HyD	9	5	0.16	F	F	F	L	M							leaning trunk		
221		Acacia confusa	台灣相思	HyD	13	9*	0.32	F	F	F	L	M							leaning trunk		
222		Acacia confusa	台灣相思	HyD	9	4	0.13	F	F	F	L	M							slightly crooked trunk		
223		Acacia confusa	台灣相思	HyD	7	4	0.18	F	F	F	L	M							leaning upper trunk		
224		Acacia confusa	台灣相思	HyD	7*	3*	0.15	F	F	F	L	M							slightly leaning trunk		
225		Hibiscus tiliaceus	黃薔	HyD	6*	3	0.18	F	P	P	L	M							collapsed and deformed		
226		Acacia confusa	台灣相思	HyD	6	3*	0.18	F	F	F	L	M							slightly crooked trunk		
227		Acacia confusa	台灣相思	HyD	14	7*	0.21	G	F	F	L	M							slightly crooked trunk, on slope with interlocking roots & branches		
228		Acacia confusa	台灣相思	HyD	11	5*	0.18	F	F	F	L	M							leaning upper trunks, on slope with interlocking roots & branches		
229		Acacia confusa	台灣相思	HyD	14	5*	0.27	F	F	F	L	M							leaning trunk		
230		Acacia confusa	台灣相思	HyD	14	8	0.45*	G	F	F	L	M							slightly crooked trunk		
231		Acacia confusa	台灣相思	HyD	13	5	0.20	F	F	F	L	M							slightly leaning trunk		
232		Acacia confusa	台灣相思	HyD	15	8	0.38	F	F	F	L	M							slightly leaning trunk		
233		Acacia confusa	台灣相思	HyD	12*	7	0.22	F	F	F	L	M							slightly leaning trunk		
234		Acacia confusa	台灣相思	HyD	14	8*	0.26	F	F	F	L	M							imbalanced canopy		
235		Acacia confusa	台灣相思	HyD	14	9*	0.32	F	F	F	L	M							twin trunks, slightly leaning		
236		Acacia confusa	台灣相思	HyD	15	10*	0.30	G	F	F	L	M							imbalanced canopy		
237		Acacia confusa	台灣相思	HyD	10	5*	0.22	F	F	F	L	M							crooked upper trunk		
238		Acacia confusa	台灣相思	HyD	14	5	0.23	F	F	F	L	M							leaning trunk		
239		Acacia confusa	台灣相思	HyD	14	6	0.30	F	F	F	L	M							leaning upper trunk		
240		Leucaena leucocephala	銀合歡	HyD	12	6	0.26	G	F	P	L	M							leaning upper trunk		
241		Leucaena leucocephala	銀合歡	HyD	13	3*	0.14	G	F	P	L	M							crooked trunk		
242		Thevetia peruviana	黃花夾竹桃	HyD	5	5*	0.26	F	F	F	L	M							substantially leaning trunk		
243		Leucaena leucocephala	銀合歡	HyD	7	3	0.15	F	F	F	L	M							leaning upper trunk		
244		Leucaena leucocephala	銀合歡	HyD	10	8	0.45*	F	F	F	L	M							multiple stems, with a decayed branch		
245		Leucaena leucocephala	銀合歡	HyD	11	4	0.19	F	F	F	L	M							leaning upper trunk		
																			multiple stems, crooked upper trunks		

(Widening of Tsuen Mun Road at Tsing Tin Interchange)
 Tree Assessment Schedule - Excluding Castle Peak Road (San Hui) Park
 (Trees under jurisdiction of HYD)

Tree no. 1 to no. 443 were assessed from 22 Feb. 07 pm to 13 March 07 pm; tree no. 444 to no. 471 were assessed on 14 May 2007 am

Tree no.	Tree Photo no.	Tree Species (Botanical name)	Chinese Name (Hong Kong)	Tree Maintenance Dept.	Tree Size			Health	Form	Amenity Value	Survival Rate after Transplanting			Recommendation			Remarks ²	Engineering Justification for Felling or Transplanting or Pruning ³
					Height (m)	Average crown spread (m)	Trunk diameter ¹ (m)				Good	Fair	Poor	High	Medium	Low		
246	246	Leucaena leucocephala	銀合歡	HyD	10	5	0.30*	F	F	L							multiple trunks, leaning	
247	247	Leucaena leucocephala	銀合歡	HyD	10	4	0.12	F	F	L							crooked upper trunk	
248	248	Acacia confusa	台灣相思	HyD	13*	8	0.46	F	F	L							twin trunks, slightly crooked upper trunks	
249	249	Hibiscus tiliaceus	黃槿	HyD	13*	10*	0.45	F	F	L							leaning lower trunk, with cavities	
250	250	Leucaena leucocephala	銀合歡	HyD	13	3	0.14	F	F	L							leaning trunk	
251	251	Hibiscus tiliaceus	黃槿	HyD	10	9	0.50*	F	F	L							multiple trunks, leaning	
252	252	Hibiscus tiliaceus	黃槿	HyD	5*	4	0.23	F	P	L							collapsed and deformed	
253	253	Hibiscus tiliaceus	黃槿	HyD	5	4	0.15	F	F	L							crooked upper trunk	
254	254	Hibiscus tiliaceus	黃槿	HyD	5	3	0.13	F	F	L							leaning trunk	
255	255	Hibiscus tiliaceus	黃槿	HyD	5	5	0.15	F	F	L							leaning trunk	
256	256	Thevetia peruviana	黃花夾竹桃	HyD	8*	3	0.13	F	F	L							leaning co-dominant trunks	
257	257	Hibiscus tiliaceus	黃槿	HyD	10	8*	0.30*	G	F	L							crooked upper trunk	
258	258	Hibiscus tiliaceus	黃槿	HyD	10	8	0.45*	G	F	L							crooked upper trunk	
259	259	Leucaena leucocephala	銀合歡	HyD	7	3*	0.13	F	P	L							substantially leaning trunk	
260	260	Leucaena leucocephala	銀合歡	HyD	8	4*	0.17	F	F	L							leaning trunk	
261	261	Albizia lebbek	大葉合歡	HyD	8	6	0.22	F	P	L							partially collapsed, leaning against another tree, on slope with interlocking roots & branches	
262	262	Acacia confusa	台灣相思	HyD	12*	8*	0.30	F	F	L							leaning upper trunks, on slope with interlocking roots & branches	
263	263	Acacia confusa	台灣相思	HyD	10	5*	0.22	F	F	L							crooked upper trunk, on slope with interlocking roots & branches	
264	264	Acacia confusa	台灣相思	HyD	12	4*	0.15	F	F	L							slightly crooked trunk, on slope with interlocking roots & branches	
265	265	Acacia confusa	台灣相思	HyD	12	7*	0.26	F	F	L							slightly crooked trunk, on slope with interlocking roots & branches	
266	266	Acacia confusa	台灣相思	HyD	11	6	0.22	F	F	L							slightly crooked lower trunk, on slope with interlocking roots & branches	
267	267	Acacia confusa	台灣相思	HyD	13	5	0.17	F	F	L							interlocking roots & branches	
269	269	Acacia confusa	台灣相思	HyD	12	3	0.10	F	F	L							crooked upper trunk, on slope with interlocking roots & branches	
280	280	Acacia confusa	台灣相思	HyD	14	7*	0.22	G	F	L							slightly leaning trunk, on slope with interlocking roots & branches	
340	340	Melaleuca quinquenervia	白千層	HyD	6*	3.5*	0.21	G	G	M							slightly leaning trunk, on slope with interlocking roots & branches	
341	341	Melaleuca quinquenervia	白千層	HyD	4.5*	3	0.17	G	G	M							slightly leaning trunk, on slope with interlocking roots & branches	
342	342	Melaleuca quinquenervia	白千層	HyD	6*	4*	0.20	G	G	M							slightly leaning trunk, on slope with interlocking roots & branches	
343	343	Melaleuca quinquenervia	白千層	HyD	6*	2.5*	0.20	G	G	M							slightly leaning trunk, on slope with interlocking roots & branches	
344	344	Melaleuca quinquenervia	白千層	HyD	7*	4*	0.27*	G	G	M							slightly leaning trunk, on slope with interlocking roots & branches	
345	345	Melaleuca quinquenervia	白千層	HyD	7*	4*	0.25	G	G	M							slightly leaning trunk, on slope with interlocking roots & branches	
346	346	Melaleuca quinquenervia	白千層	HyD	4.5*	2	0.18	G	F	L							slightly leaning trunk, on slope with interlocking roots & branches	
347	347	Albizia lebbek	大葉合歡	HyD	6	7	0.25	G	F	L							slightly leaning trunk	
348	348	Melaleuca quinquenervia	白千層	HyD	8*	5	0.32	F	G	M							slightly crooked trunk	
349	349	Melaleuca quinquenervia	白千層	HyD	9*	6	0.40	F	G	M							slightly crooked trunk	
350	350	Melaleuca quinquenervia	白千層	HyD	8*	4*	0.25*	F	G	M							slightly crooked trunk	
351	351	Albizia lebbek	大葉合歡	HyD	8	7	0.32	G	F	L							slightly crooked trunk	
352	352	Albizia lebbek	大葉合歡	HyD	9	10	0.35*	G	F	L							slightly crooked trunk	

(Widening of Tuen Mun Road at Tsing Tin Interchange)
 Tree Assessment Schedule - Excluding Castle Peak Road (San Hui) Park
 (Trees under jurisdiction of HvD)

Drawing No: HLUNT1073-LA2002

Tree no. 1 to no. 443 were assessed from 22 Feb. 07 pm to 13 March 07 pm; tree no. 444 to no.471 were assessed on 14 May 2007 am

Tree no.	Photo no.	Tree Species (Botanical name)	Chinese Name (Hong Kong)	Tree Maintenance Dept.	Tree Size		Health			Form	Amenity Value	Survival Rate after Transplanting			Recommendation			Remarks ²	Engineering Justification for Felling or Transplanting or Pruning ³
					Height (m)	Average crown spread (m)	Trunk diameter ¹ (m)	Good	Fair			Poor	High	Medium	Low	Retain	Transplant		
403		Hibiscus tiliaceus	黃槿	HvD	9	5	0.45*	F	F	F	L	L	L	R				twin trunks, one leaning down, on slope with interlocking roots & branches	
404		Hibiscus tiliaceus	黃槿	HvD	10	8	0.80*	G	F	F	L	L	L	R				multiple trunks, some leaning, on slope with interlocking roots & branches	
410		Hibiscus tiliaceus	黃槿	HvD	12	6	0.50*	F	P	P	L	L	L	R				co-dominant trunks, one is decaying, on slope with interlocking roots & branches	
412		Dead tree	死樹	HvD	-	-	-	-	-	-	-	N/A						to be removed	
413		Cinnamomum burmanni	降香	HvD	8	6	0.55*	G	G	G	M	L	L	R				multiple trunks, well balanced canopy, on slope with interlocking roots & branches	for the sake of public safety
436		Acacia confusa	台灣相思	HvD	11	8	0.36	G	F	F	L	L	L	R				leaning lower trunk, on slope with interlocking roots & branches	

Note : * size adjustment during tree assessment

Remarks:

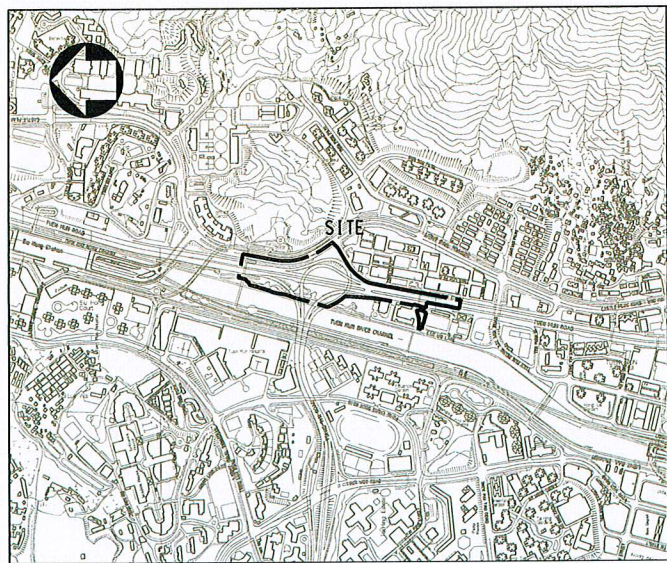
1. Trunk diameter of a tree refers to its diameter at breast height (i.e. measured at 1.3m above ground level) as per ETWB TCW No. 3/2006.
2. Special features such as Old and Valuable Trees, ecological, cultural, historical significance or large/ old trees and defects as identified.
3. Engineering justification:
 - (a) affected by road widening;
 - (b) affected by construction of noise barrier;

Summary: 186 trees recommended for Retaining
 0 trees recommended for Transplanting
 0 trees recommended for Felling

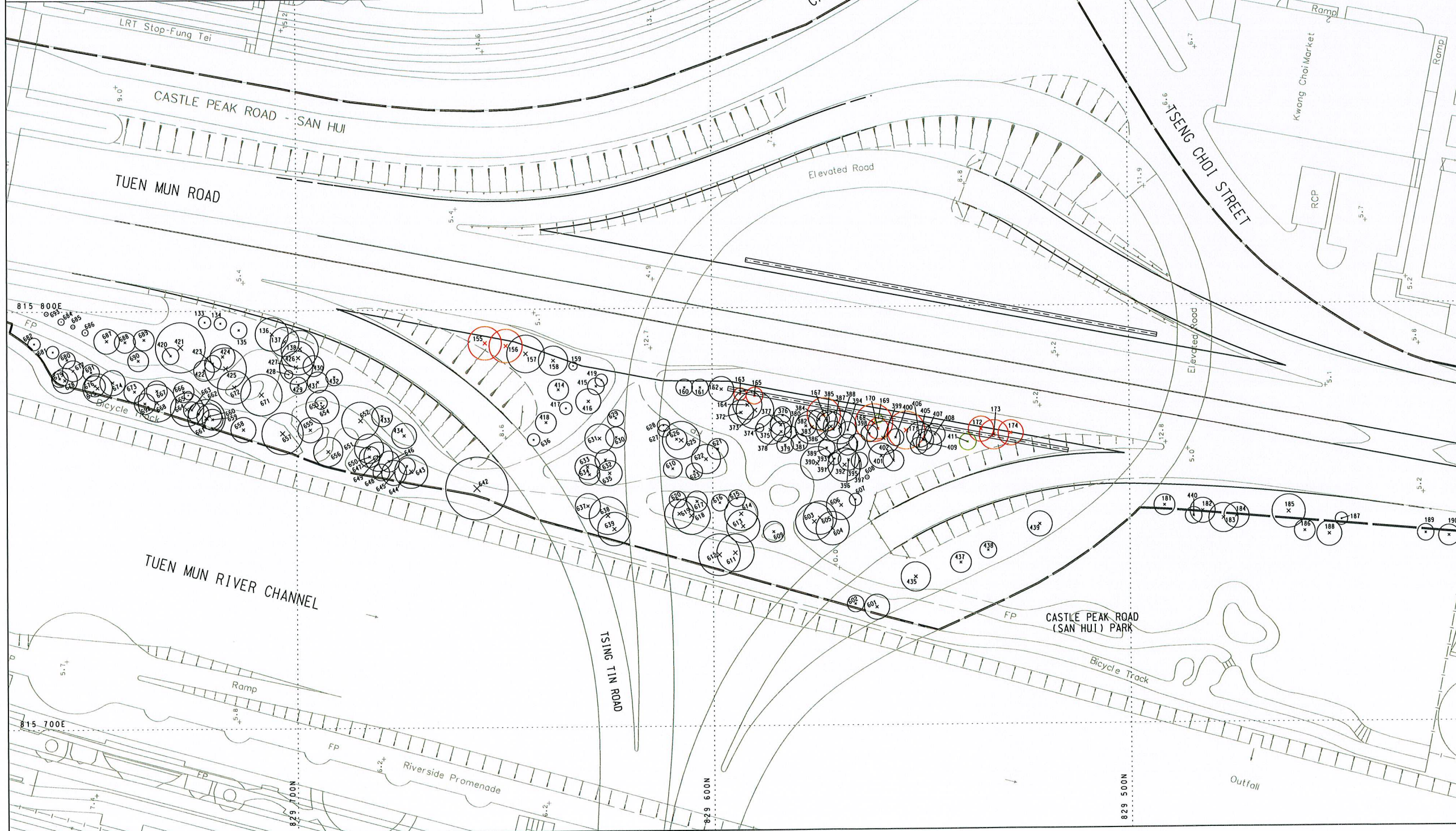
Total: 186 trees
 (Designs of geotechnical/ slope works have yet to be finalized)

Widening of Tuen Mun Road at Tsing Tin Interchange
Tree Assessment Schedule - Summary of Recommendation

No. of Trees	Under LCSD's Jurisdiction		Under HyD's Jurisdiction	Total
	Within San Hui Park	Outside Park		
Retained	172	145	186	503
Transplanted	2	3	0	5
Fell	11	31	0	42
Total	185	179	186	550



KEY PLAN
SCALE 1:10000



- NOTES :
- ALL LEVELS AREA IN METRES ABOVE H.K.P.D.
 - CO-ORDINATES AREA OF HONG KONG 1980 GRID SYSTEM.
- LEGEND :
- LIMIT OF WORKS AREA
 - EXISTING TREE TO BE RETAINED
 - EXISTING TREE TO BE FELLED
 - EXISTING TREE TO BE TRANSPLANTED
 - PROPOSED EDGE OF VERGES
 - PROPOSED NOISE BARRIER

no.	date	description	initial
REVISION			
		name	initial date
designed		T Y NG	SIGNED 10/07
drawn		S K NG	SIGNED 10/07
traced			
checked		C K LI	SIGNED 10/07
approved		SIGNED J KWOK Senior Landscape Architect 10/07 date	

contract no.
file no. HYDT 12/7/182
project no.
contract
WIDENING OF TUEN MUN ROAD AT TSING TIN INTERCHANGE

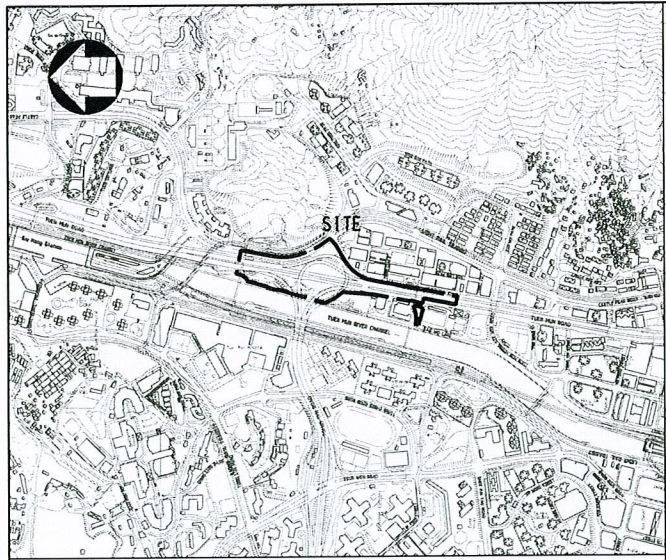
drawing title
TREE SURVEY PLAN - WITHIN CASTLE PEAK ROAD (SAN HUI) PARK

drawing no. HLUNT1073-LA2001
scale 1:500 OR AS SHOWN

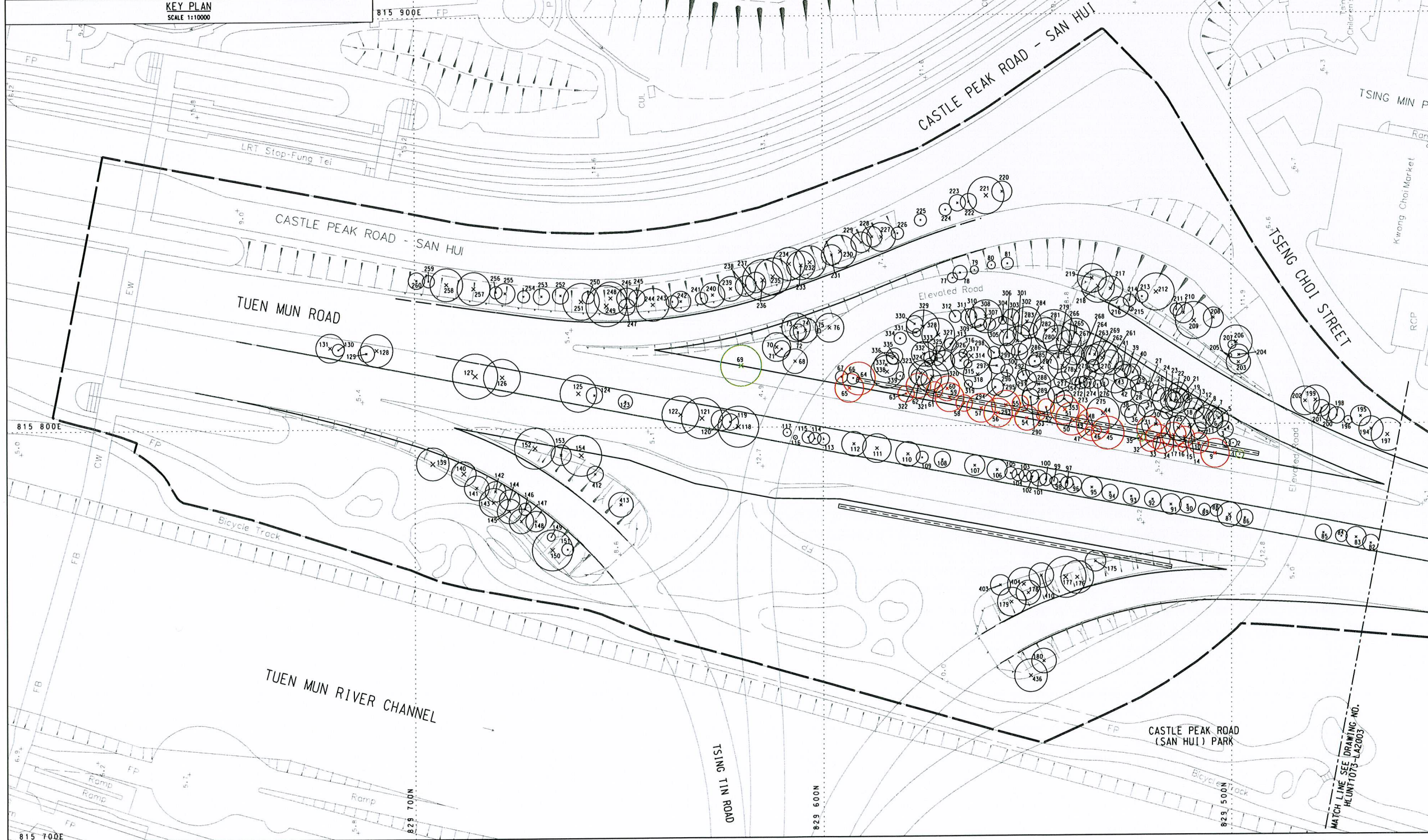
COPYRIGHT RESERVED

office LANDSCAPE UNIT





KEY PLAN
SCALE 1:10000



- NOTES :
1. ALL LEVELS AREA IN METRES ABOVE H.K.P.D.
 2. CO-ORDINATES AREA OF HONG KONG 1980 GRID SYSTEM.
- LEGEND :
- [Dashed line] LIMIT OF WORKS AREA
 - (332 x) EXISTING TREE TO BE RETAINED
 - (64 x) EXISTING TREE TO BE FELLED
 - (69 x) EXISTING TREE TO BE TRANSPLANTED
 - [Solid line] PROPOSED EDGE OF VERGES
 - [Double line] PROPOSED NOISE BARRIER

no.	date	description	initial
REVISION			
		name	Initial date
designed		T Y NG	SIGNED 10/07
drawn		S K NG	SIGNED 10/07
traced			
checked		C K LI	SIGNED 10/07
approved		SIGNED J KWOK Senior Landscape Architect 10/07 date	

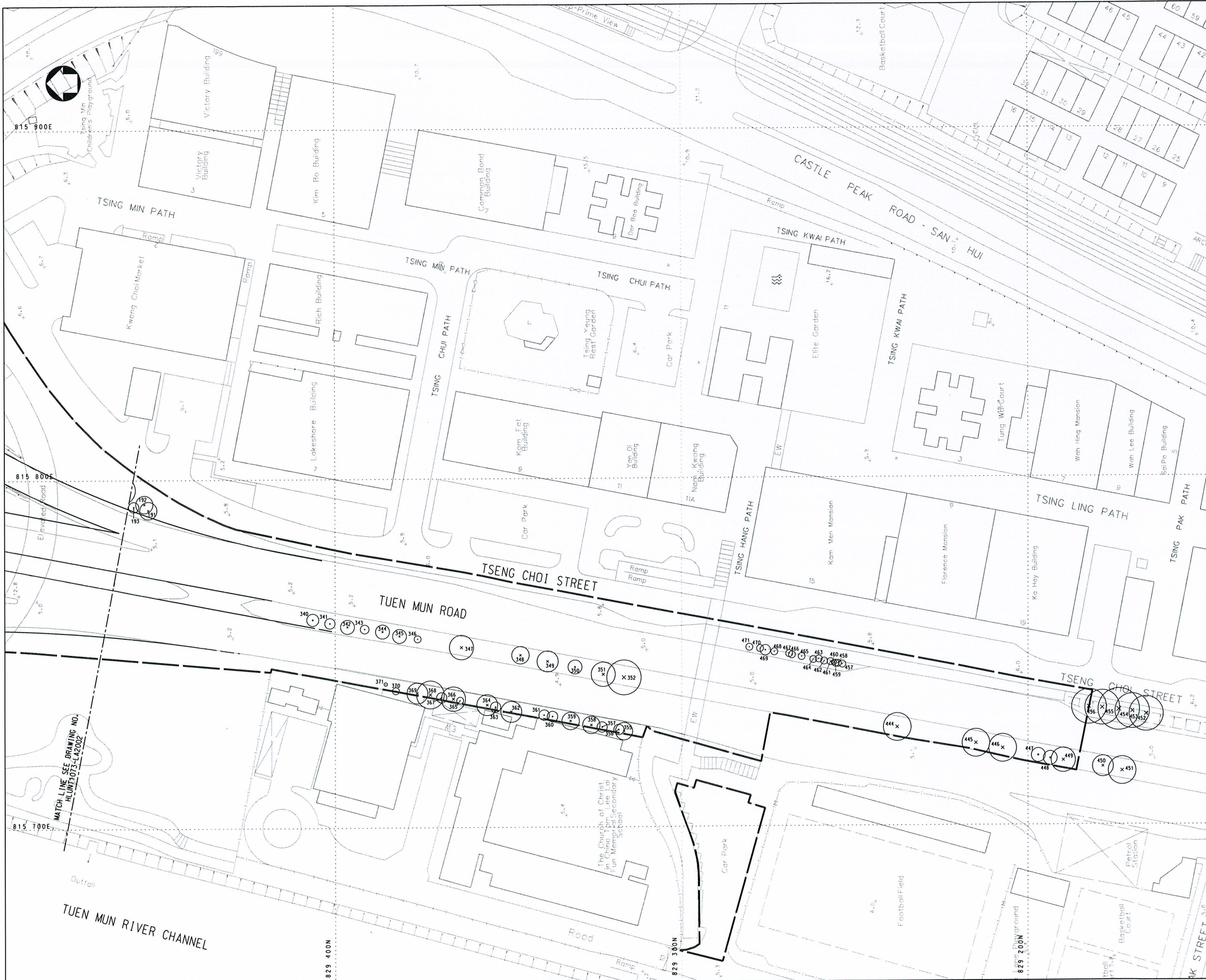
contract no.
file no. HYDT 12/7/182
project no.
contract

WIDENING OF TUEN MUN ROAD AT TSING TIN INTERCHANGE
drawing title

TREE SURVEY PLAN - EXCLUDING CASTLE PEAK ROAD (SAN HUI) PARK
(SHEET 1 OF 2)
drawing no. HLUNT1073-LA2002
scale 1:500 OR AS SHOWN

COPYRIGHT RESERVED
office LANDSCAPE UNIT





- NOTES :
1. ALL LEVELS AREA IN METRES ABOVE H.K.P.D.
 2. CO-ORDINATES AREA OF HONG KONG 1980 GRID SYSTEM.
- LEGEND :
- [Dashed line] LIMIT OF WORKS AREA
 - (332 x) EXISTING TREE TO BE RETAINED
 - (84 x) EXISTING TREE TO BE FELLED
 - (69 x) EXISTING TREE TO BE TRANSPLANTED
 - [Solid line] PROPOSED EDGE OF VERGES
 - [Double line] PROPOSED NOISE BARRIER

no.	date	description	initial
REVISION			
		name	initial date
designed		T Y NG	SIGNED 10/07
drawn		S K NG	SIGNED 10/07
traced			
checked		C K LI	SIGNED 10/07
approved		SIGNED J KWOK Senior Landscape Architect 10/07 date	

contract no. _____
 file no. HYDT 12/7/182
 project no. _____
 contract _____

WIDENING OF TUEN MUN ROAD AT TSING TIN INTERCHANGE

drawing title
TREE SURVEY PLAN - EXCLUDING CASTLE PEAK ROAD (SAN HUI) PARK
 (SHEET 2 OF 2)

drawing no. HLUNT1073-LA2003
 scale 1:500 OR AS SHOWN

COPYRIGHT RESERVED
 office LANDSCAPE UNIT

