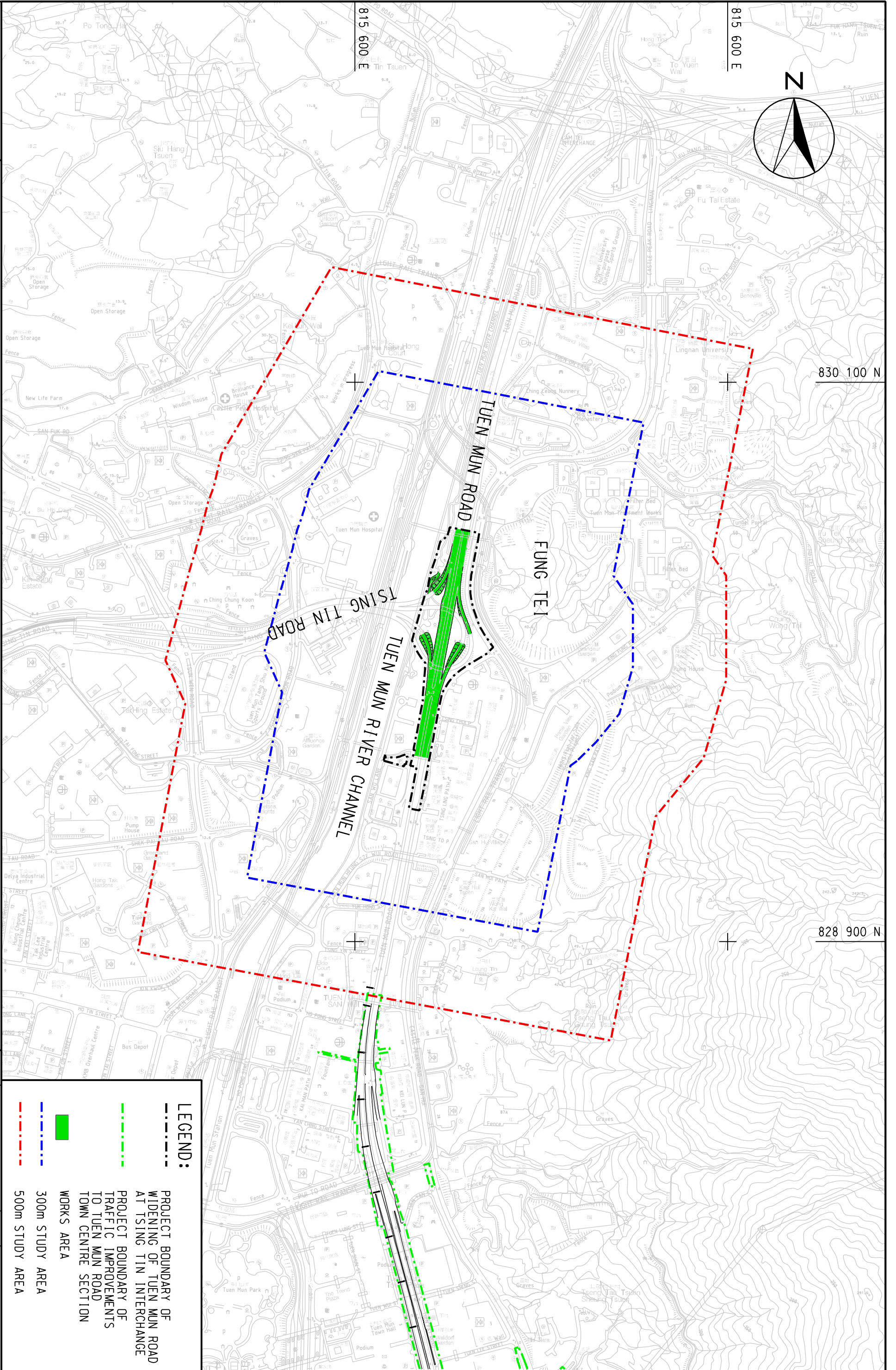


MAUNSELL | **ACCOM**
Maunsell Consultants Asia Ltd

QUOTATION REF NO. HY(S)0/026/2006
WIDENING OF TUEN MUN ROAD AT TSING TIN INTERCHANGE ENVIRONMENTAL IMPACT ASSESSMENT
LOCATION OF CONCURRENT PROJECT WITHIN 500m STUDY AREA



LEGEND:	
	PROJECT BOUNDARY OF WIDENING OF TUEN MUN ROAD AT TSING TIN INTERCHANGE
	PROJECT BOUNDARY OF TRAFFIC IMPROVEMENTS TO TUEN MUN ROAD TOWN CENTRE SECTION
	WORKS AREA
	300m STUDY AREA
	500m STUDY AREA

SCALE	DATE
A3 1:7500	OCT. 2007
CHECK	DRAWN
ETLM	LDF
JOB NO.	DRAWING NO.
60022182	FIGURE 2.2
REV	-