

LEGEND:

- ODOUR EMISSION SOURCE
- MAIN PUMPING STATIONS
- RISER SHAFTS
- INFLUENT UPFLOW STRUCTURES
- RAPID MIXING TANKS
- FLOCCULATION TANKS
- DISTRIBUTION CHANNELS
- SEDIMENTATION TANKS
- SCUM PITS AND EFFLUENT DROP STRUCTURES
- SLUDGE STORAGE TANKS
- SLUDGE DEWATERING BUILDINGS
- NORTHWEST KOWLOON PUMPING STATION
- NORTHWEST KOWLOON PUMPING STATION OVERFLOW CHAMBER
- FLOW DISTRIBUTION CHAMBERS
- SLUDGE CAKE SILOS
- NORTHWEST KOWLOON PRELIMINARY TREATMENT WORKS

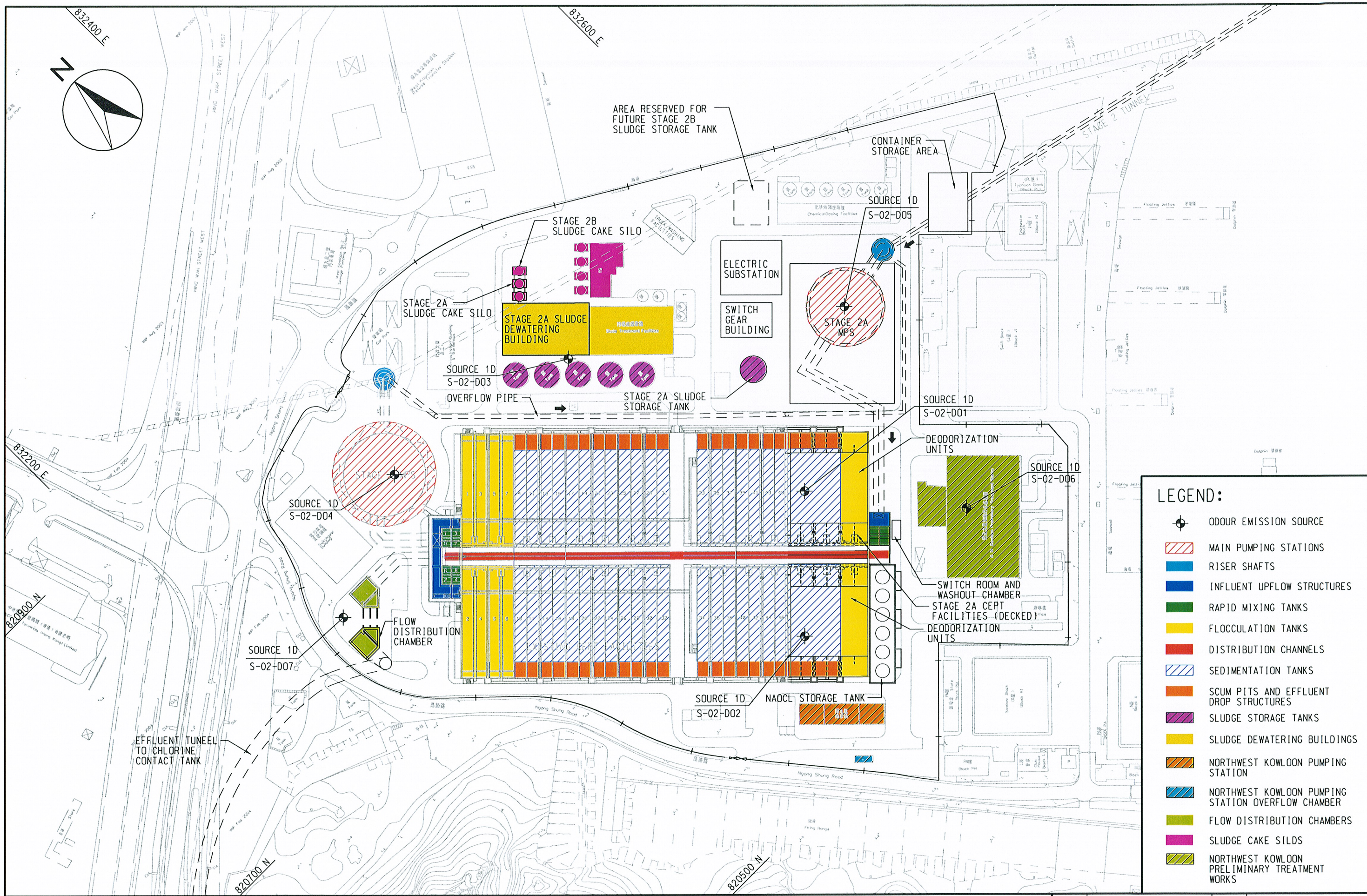
AGREEMENT NO. CE 43/2005 (EP)
 HARBOUR AREA TREATMENT SCHEME (HATS) STAGE 2A ENVIRONMENTAL IMPACT ASSESSMENT STUDY - INVESTIGATION
 LOCATION OF ODOUR EMISSION SOURCE - STONECUTTERS ISLAND STW(OPTION 1)

SCALE	A3 1:2000	DATE	SEP. 2007
CHECK	-	DRAWN	LC
JOB No.	60017198	FIGURE No.	3.19
		REV	-

ENSR | AECOM

(SHEET 1 OF 3)

\$DATE\$ \$TIME\$ \$USER\$ \$FILE\$



LEGEND:

- ODOUR EMISSION SOURCE
- MAIN PUMPING STATIONS
- RISER SHAFTS
- INFLUENT UPFLOW STRUCTURES
- RAPID MIXING TANKS
- FLOCCULATION TANKS
- DISTRIBUTION CHANNELS
- SEDIMENTATION TANKS
- SCUM PITS AND EFFLUENT DROP STRUCTURES
- SLUDGE STORAGE TANKS
- SLUDGE DEWATERING BUILDINGS
- NORTHWEST KOWLOON PUMPING STATION
- NORTHWEST KOWLOON PUMPING STATION OVERFLOW CHAMBER
- FLOW DISTRIBUTION CHAMBERS
- SLUDGE CAKE SILDS
- NORTHWEST KOWLOON PRELIMINARY TREATMENT WORKS

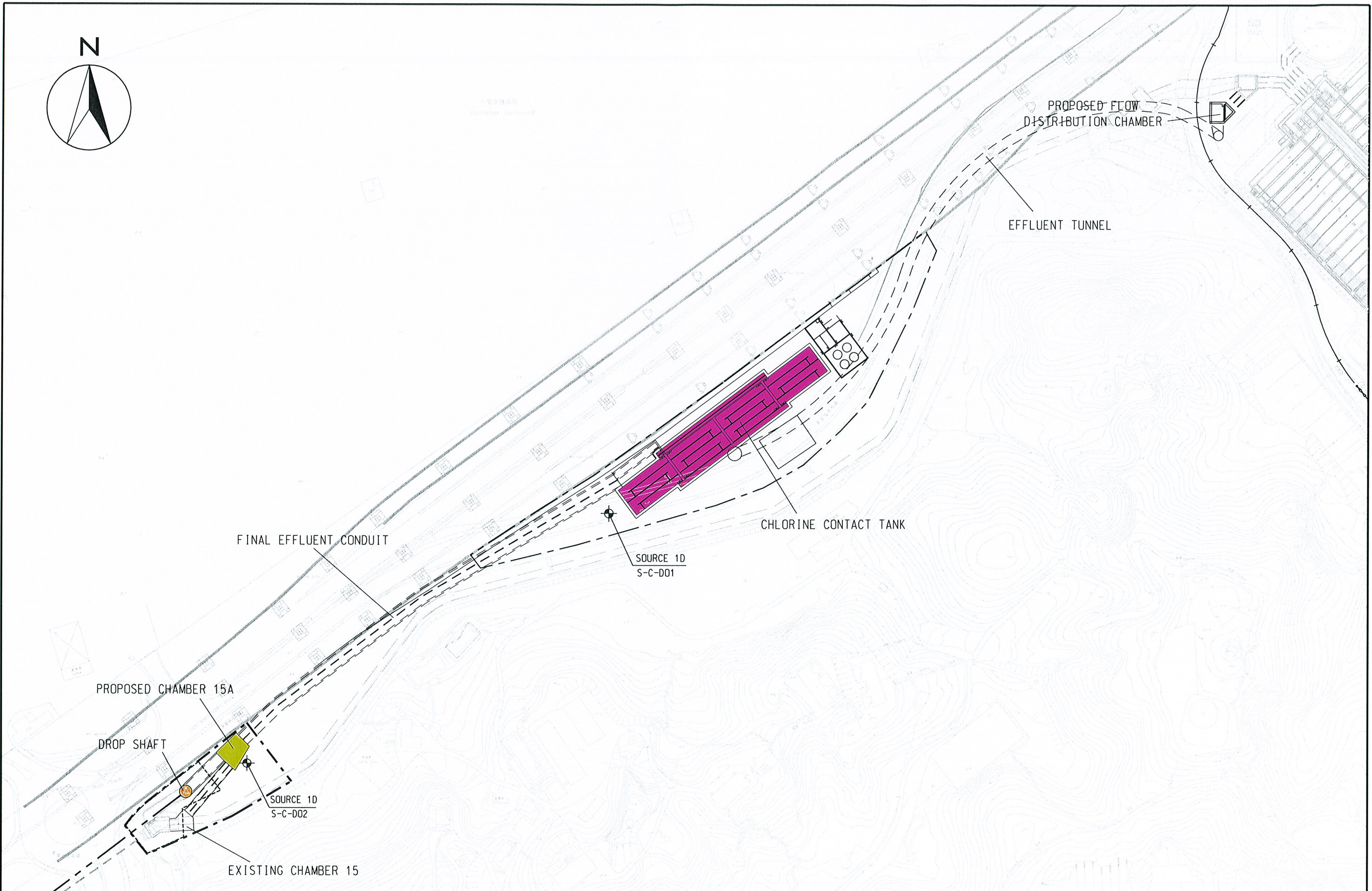
\$DATE\$ \$TIME\$ \$USER\$
ENSR | AECOM

AGREEMENT NO. CE 43/2005 (EP)
 HARBOUR AREA TREATMENT SCHEME (HATS) STAGE 2A ENVIRONMENTAL IMPACT ASSESSMENT STUDY - INVESTIGATION
 LOCATION OF ODOUR EMISSION SOURCE - STONECUTTERS ISLAND STW (OPTION 2)

SCALE	1:2000	DATE	SEP. 2007
CHECK	-	DRAWN	LC
JOB No.	60017198	FIGURE No.	3.19
		REV	-

(SHEET 2 OF 3)

\$FILE\$



\$DATE\$
 \$TIME\$
 \$USER\$
 \$FILE\$



AGREEMENT NO. CE 43/2005 (EP)
 HARBOUR AREA TREATMENT SCHEME (HATS) STAGE 2A ENVIRONMENTAL IMPACT ASSESSMENT STUDY - INVESTIGATION
 LOCATION OF ODOUR EMISSION SOURCE - STONECUTTERS ISLAND STW (CHLORINATION PLANT)
 (SHEET 3 OF 3)

SCALE	A3 1:2500	DATE	SEP. 07
CHECK	VCYL	DRAWN	LC
JOB No.	60017198	FIGURE No.	3.19
		REV	