

831100 E

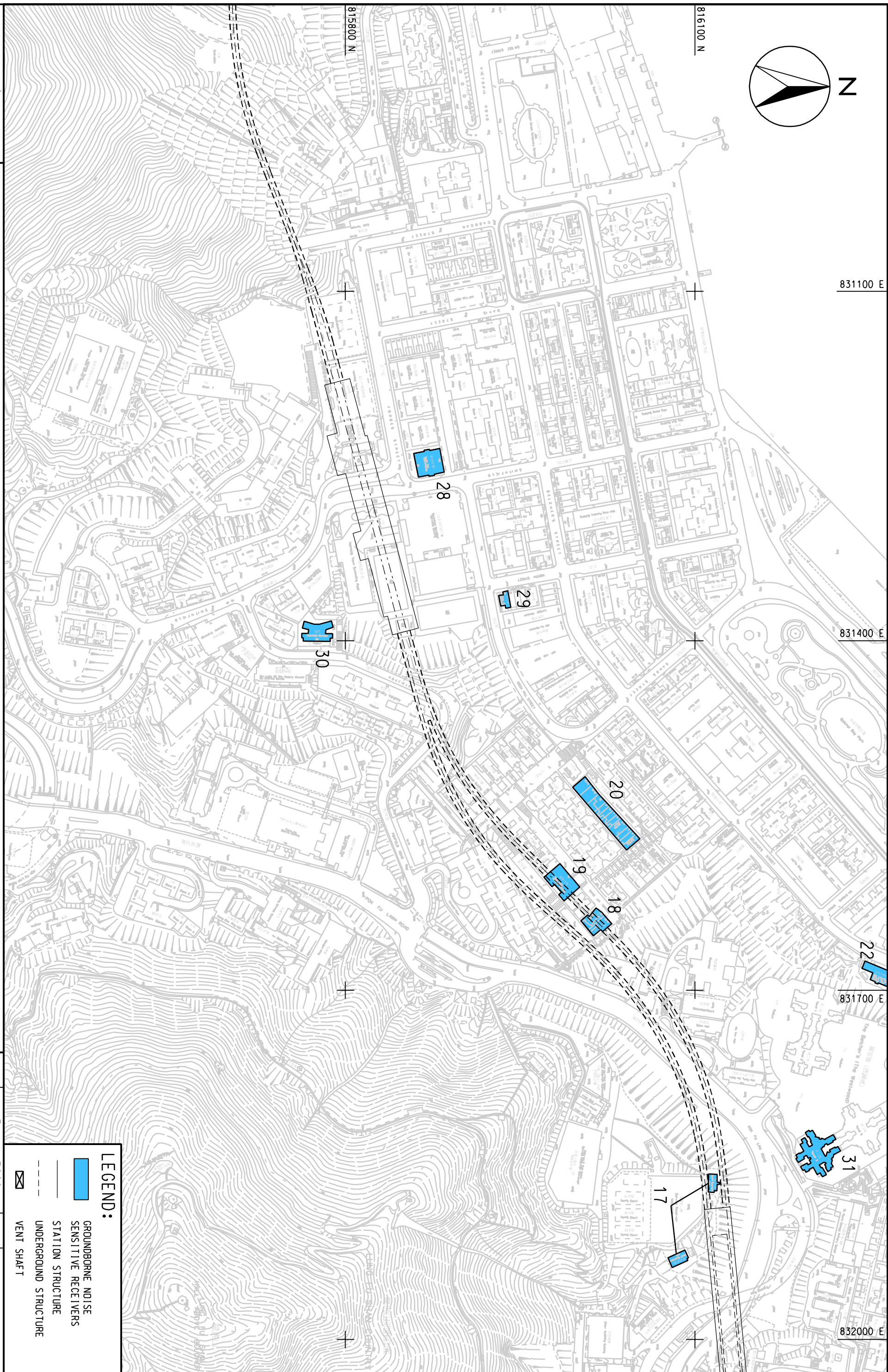
831400 E

831700 E


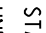
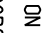

832000 E

816100 N

815800 N



LEGEND:

	GROUNDBORNE NOISE SENSITIVE RECEIVERS
	STATION STRUCTURE
	UNDERGROUND STRUCTURE
	VENT SHAFT

ENSR
MAUNSELL
 ENSR Asia (HK) Ltd.
 AECOM

WEST ISLAND LINE ENVIRONMENTAL IMPACT ASSESSMENT
 LOCATIONS OF GROUNDBORNE NOISE SENSITIVE RECEIVERS (CONSTRUCTION PHASE)

(SHEET 3 OF 5)

SCALE	A3 1 : 3000	DATE	DEC. 2007
CHECK	KNKY	DRAWN	LDF
JOB NO.	60017115	DRAWING NO.	FIG 4.3
		REV	-