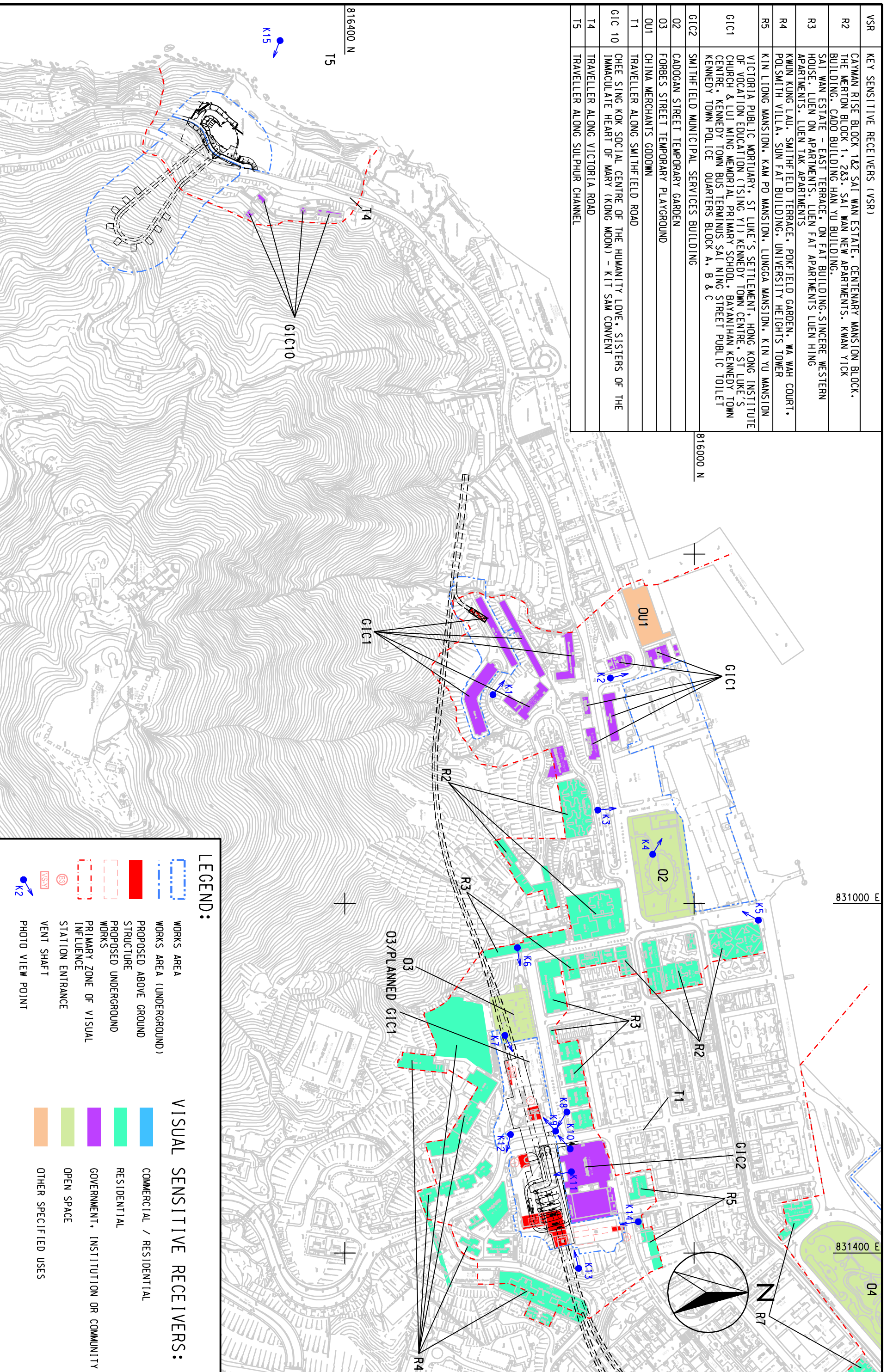


VSR	KEY SENSITIVE RECEIVERS (VSR)
R2	CAYMAN RISE BLOCK 1&2 SAI WAN ESTATE, CENTENARY MANSION BLOCK, THE WERTON BLOCK 1, 2&3, SAI WAN NEW APARTMENTS, KWAN YICK BUILDING, CADO BUILDING HAN YU BUILDING.
R3	SAI WAN ESTATE - EAST TERRACE, ON FAT BUILDING, SINCERE WESTERN HOUSE, LUEN ON APARTMENTS, LUEN FAT APARTMENTS LUEN HING APARTMENTS, LUEN TAK APARTMENTS
R4	KWUN KUNG LAU, SMITHFIELD TERRACE, POKFIELD GARDEN, WA WAH COURT, POLSMITH VILLA, SUN FAT BUILDING, UNIVERSITY HEIGHTS TOWER
R5	KIN LIDONG MANSION, KAM PO MANSION, LUNGGA MANSION, KIN YU MANSION
G1C1	VICTORIA PUBLIC MORTUARY, ST LUKE'S SETTLEMENT, HONG KONG INSTITUTE OF VOCATION EDUCATION (TSING YI) KENNEDY TOWN CENTRE, ST LUKE'S CHURCH & LUI MING MEMORIAL PRIMARY SCHOOL, BAYANHAN KENNEDY TOWN CENTRE, KENNEDY TOWN BUS TERMINUS SAI NING STREET PUBLIC TOILET KENNEDY TOWN POLICE QUARTERS BLOCK A, B & C
G1C2	SMITHFIELD MUNICIPAL SERVICES BUILDING
02	CADOGAN STREET TEMPORARY GARDEN
03	FORBES STREET TEMPORARY PLAYGROUND
OUI	CHINA MERCHANTS GOODOWN
T1	TRAVELLER ALONG SMITHFIELD ROAD
G1C 10	CHEE SING KOK SOCIAL CENTRE OF THE HUMANITY LOVE, SISTERS OF THE IMMACULATE HEART OF MARY (KONG MOON) - KIT SAM CONVENT
T4	TRAVELLER ALONG VICTORIA ROAD
T5	TRAVELLER ALONG SULPHUR CHANNEL



LEGEND:

	WORKS AREA		COMMERCIAL / RESIDENTIAL
	WORKS AREA (UNDERGROUND)		RESIDENTIAL
	PROPOSED ABOVE GROUND STRUCTURE		GOVERNMENT, INSTITUTION OR COMMUNITY
	PROPOSED UNDERGROUND WORKS		OPEN SPACE
	PRIMARY ZONE OF VISUAL INFLUENCE		OTHER SPECIFIED USES
	STATION ENTRANCE		
	VENT SHAFT		
	PHOTO VIEW POINT		

ENSR
MAUNSELL
ENSR Asia (HK) Ltd.

AECOM

WEST ISLAND LINE ENVIRONMENTAL IMPACT ASSESSMENT
ZONE OF VISUAL INFLUENCE FOR VISUALLY SENSITIVE RECEIVERS IN KENNEDY TOWN
(SHEET 2 OF 4)

SCALE	A3 1 : 4000	DATE	DEC. 2007
CHECK		DRAWN	LC
JOB NO.	60017115	DRAWING NO.	FIG 5.4.2
		REV	-