

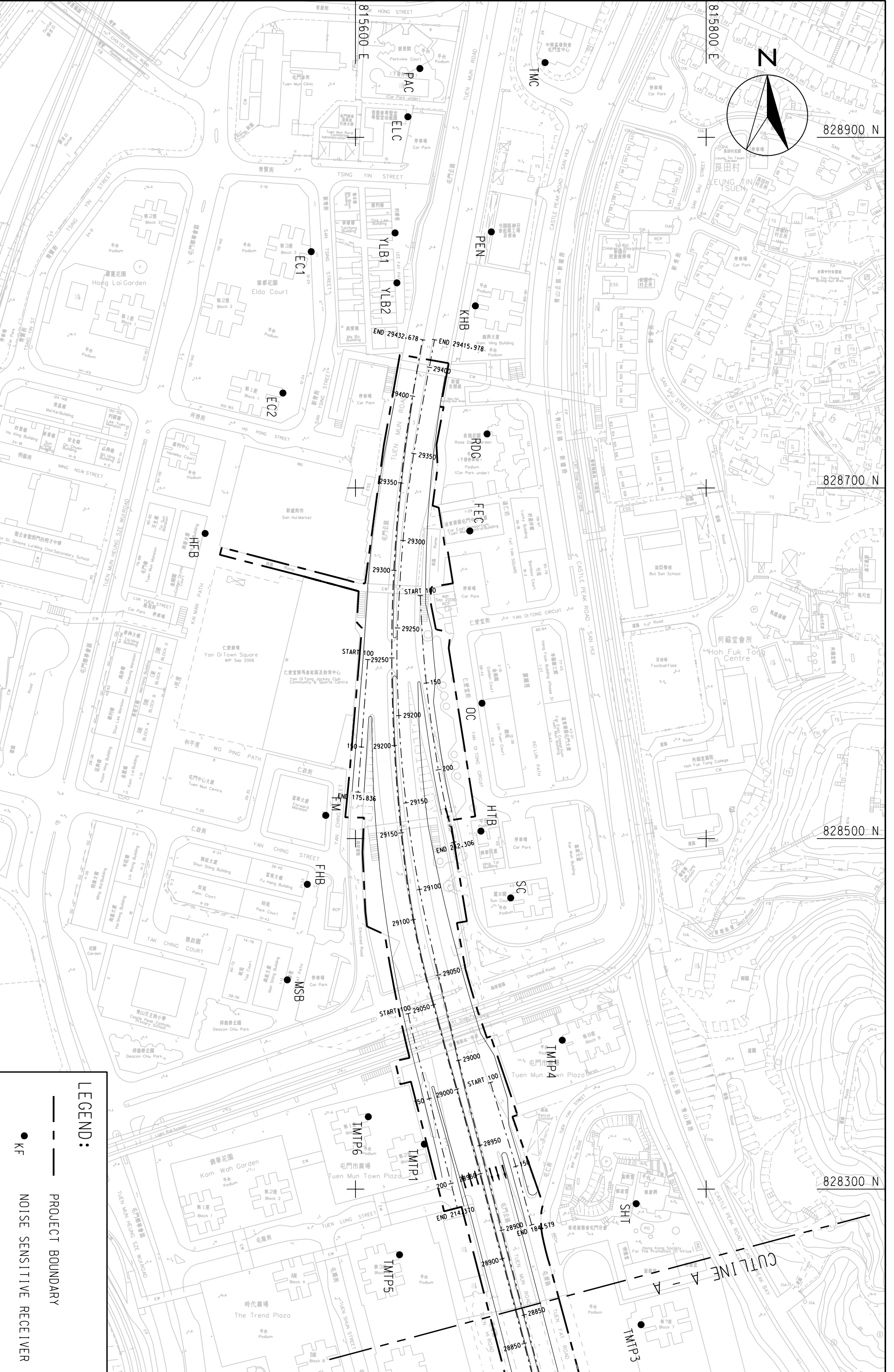
MAUNSELL AECOM
茂盛(亞洲)工程顧問有限公司

LOCATIONS OF REPRESENTATIVE NOISE SENSITIVE RECEIVERS

AGREEMENT NO. CE22/2005 (HY)
TRAFFIC IMPROVEMENTS TO TUEN MUN ROAD TOWN CENTRE SECTION

(SHEET 1 OF 3)

SCALE	A3 1:2000	DATE	DEC. 2008
CHECK	ETLM	DRAWN	LC
JOB NO.	60025208	FIGURE NO.	FIGURE 3.1A
		REV	



LEGEND:

- PROJECT BOUNDARY
- KF NOISE SENSITIVE RECEIVER



828900 N

828700 N

828500 N

828300 N

815800 E

815600 E

CUTLINE A-A