

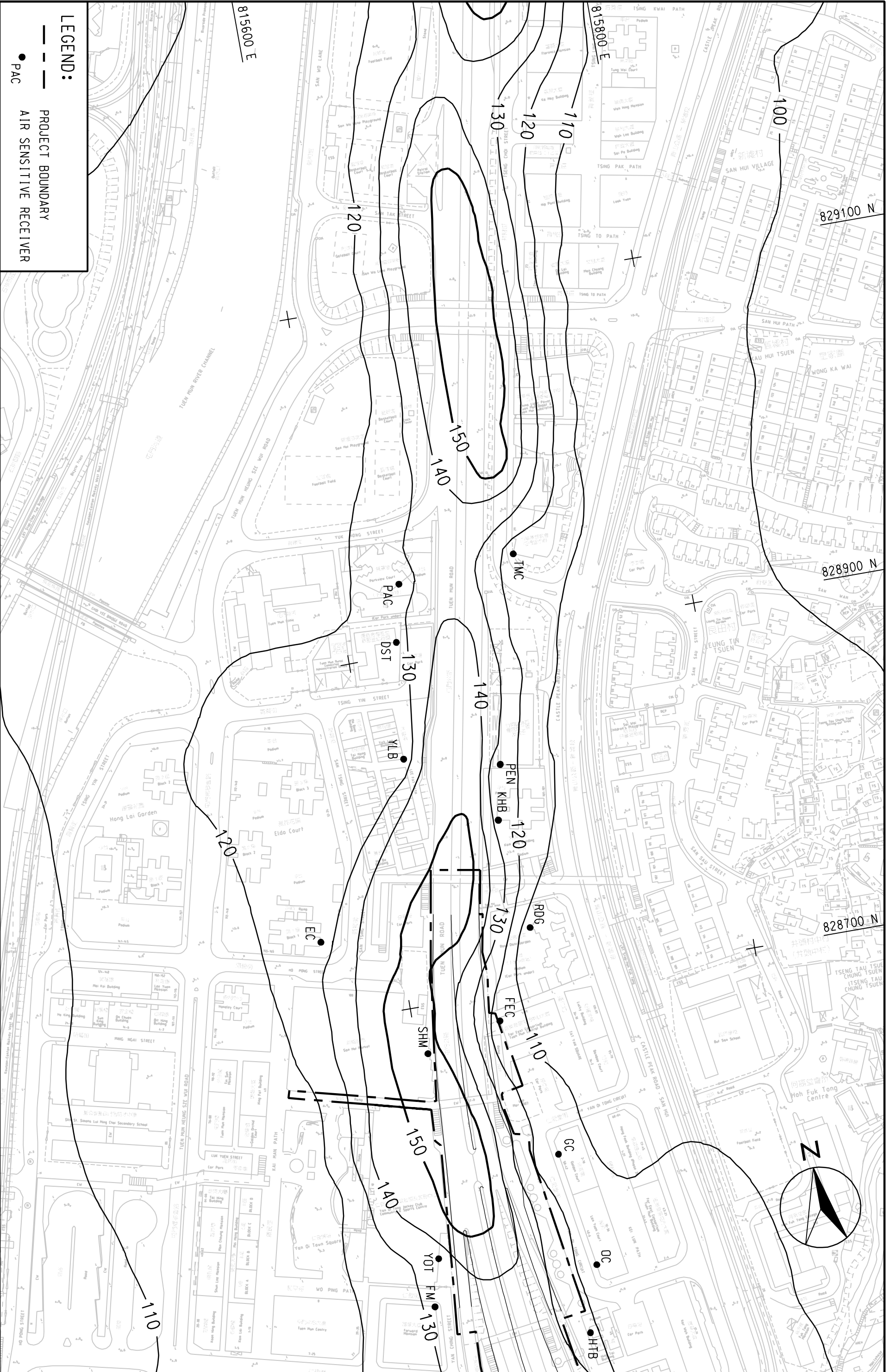
MAUNSELL | AECOM  
 茂盛(亞洲)工程顧問有限公司

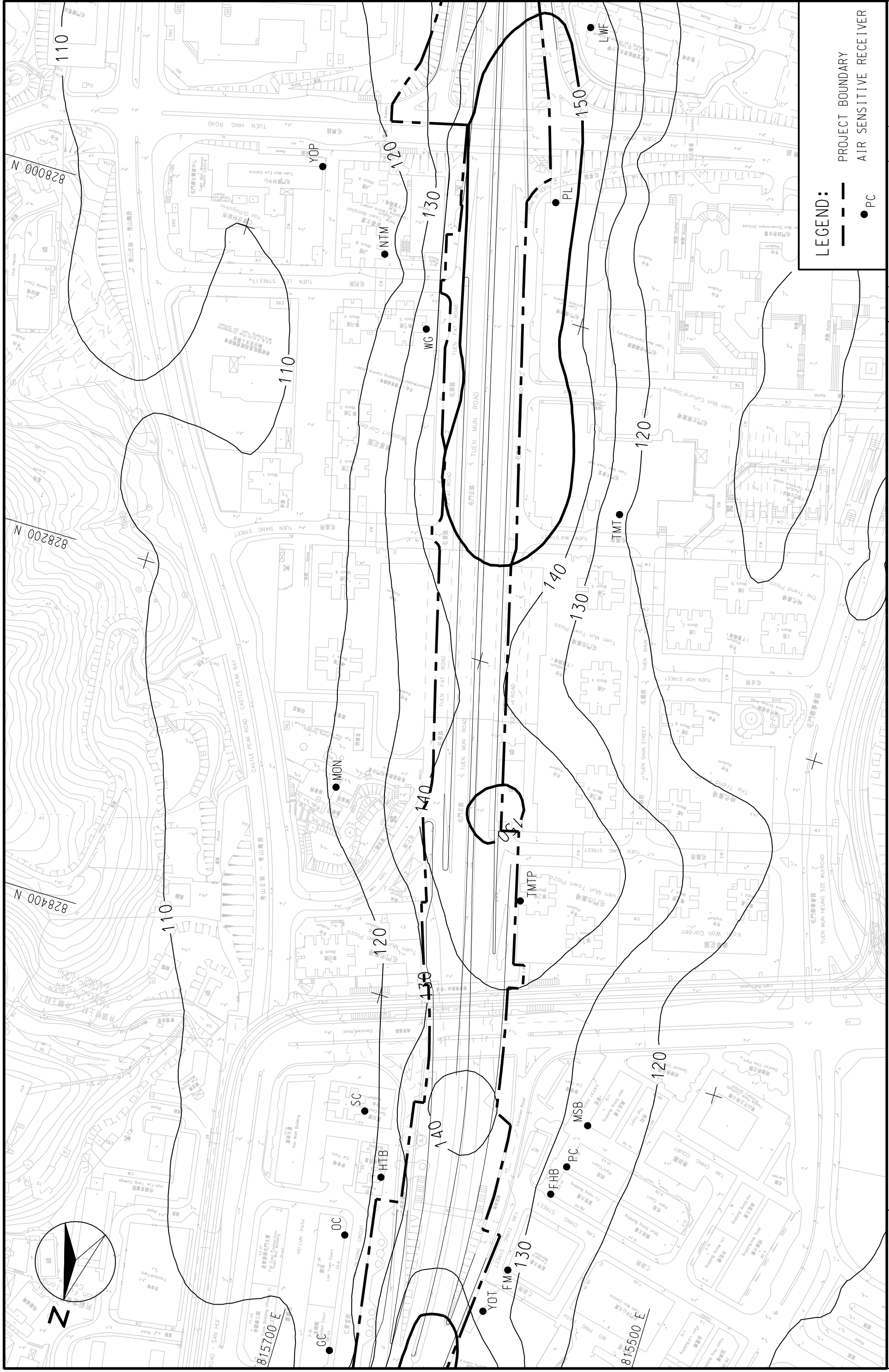
**LEGEND:**  
 - - - PROJECT BOUNDARY  
 ● PAC AIR SENSITIVE RECEIVER

AGREEMENT NO. CE22/2005 (HY)  
 TRAFFIC IMPROVEMENTS TO TIEN MUN ROAD TOWN CENTRE SECTION  
 CONTOURS OF CUMULATIVE MAXIMUM 24-HOUR AVERAGE NO<sub>2</sub>  
 CONCENTRATION IN UG/m<sup>3</sup> AT 1.5m ABOVE GROUND

(SHEET 1 OF 4)

SCALE	A3 1:2000	DATE	SEP. 2007
CHECK	ETLM	DRAWN	LCR
JOB NO.	60025208	FIGURE NO.	FIGURE 4.3
		REV	-





**LEGEND:**  
 - - - PROJECT BOUNDARY  
 ● AIR SENSITIVE RECEIVER

SCALE	A3 1:2000	DATE	SEP. 2007
CHECK	ETLM	DRAWN	LCR
JOB NO.	60025208	FIGURE NO.	FIGURE 4.3
		REV	-

(SHEET 2 OF 4)

AGREEMENT NO. CE22/2005 (HY)  
 TRAFFIC IMPROVEMENTS TO TUEN MUN ROAD TOWN CENTRE SECTION  
 CONTOURS OF CUMULATIVE MAXIMUM 24-HOUR AVERAGE NO<sub>2</sub>  
 CONCENTRATION IN ug/m<sup>3</sup> AT 1.5m ABOVE GROUND

**MAUNSELL | AECOM**  
 茂盛 (亞洲) 工程顧問有限公司

\$FILE\$



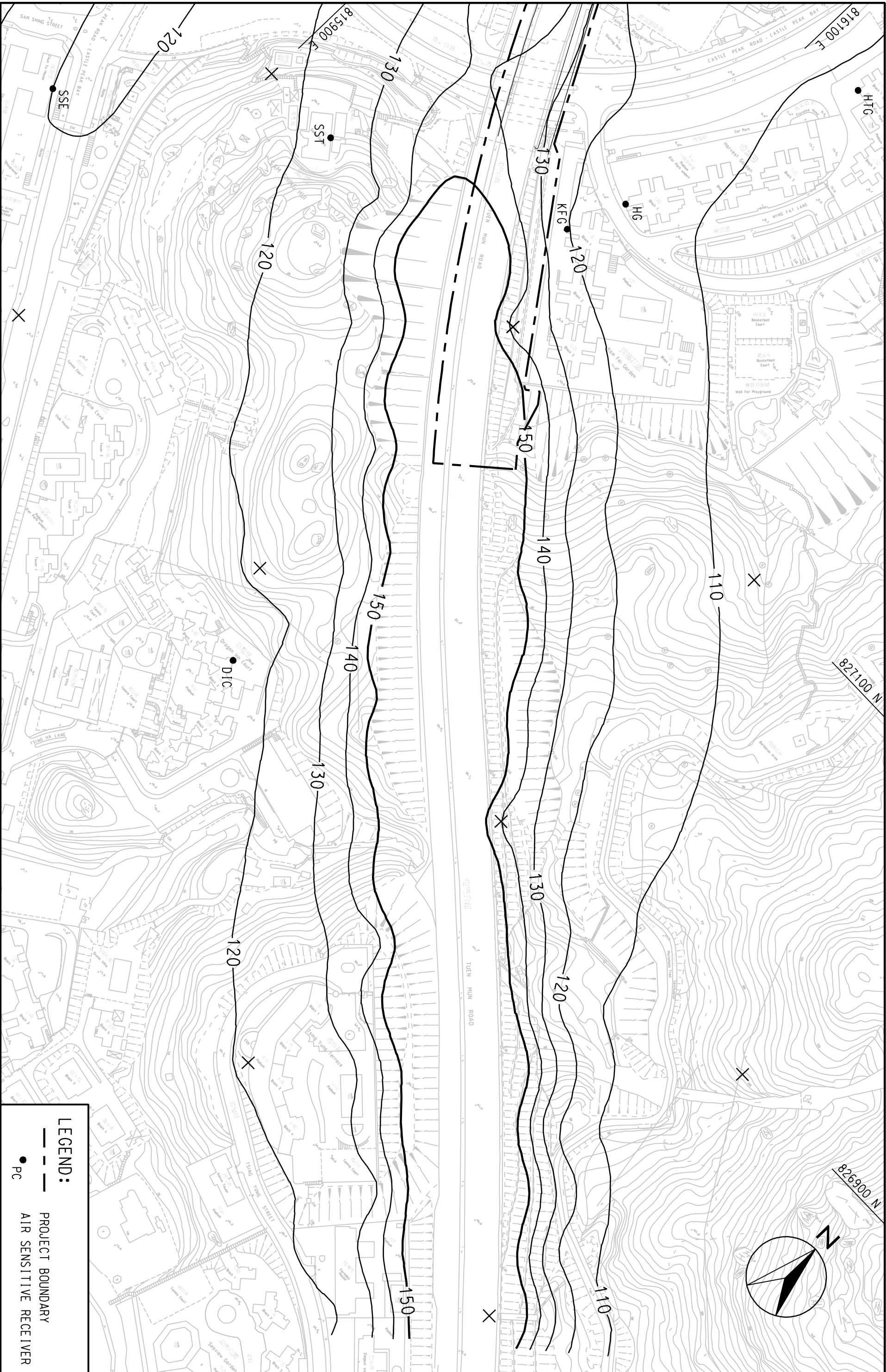


MAUNSELL | AECOM  
 茂盛 (亞洲) 工程顧問有限公司

p:\projects\60025208\DRAWING\FIGURE\FIGURE 4.3 & 4.dgn

AGREEMENT NO. CE22/2005 (HY)  
 TRAFFIC IMPROVEMENTS TO TIEN MUN ROAD TOWN CENTRE SECTION  
 CONTOURS OF CUMULATIVE MAXIMUM 24-HOUR AVERAGE NO<sub>2</sub>  
 CONCENTRATION IN UG/M<sup>3</sup> AT 1.5m ABOVE GROUND

(SHEET 4 OF 4)



**LEGEND:**

- PROJECT BOUNDARY
- AIR SENSITIVE RECEIVER

SCALE	A3 1:4000	DATE	SEP. 2007
CHECK	ETLM	DRAWN	LCR
JOB NO.	60025208	FIGURE NO.	FIGURE 4.3
		REV	-