

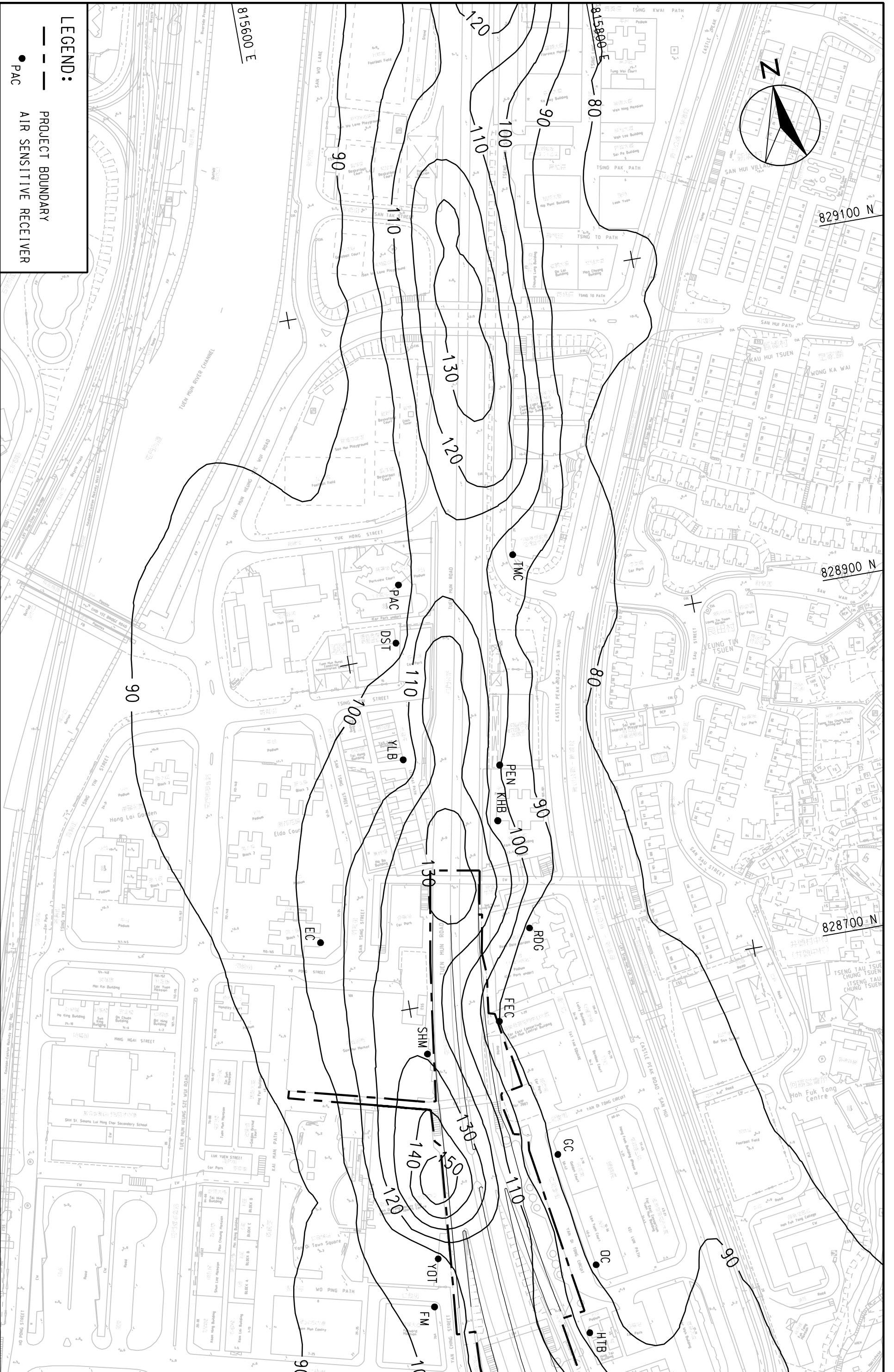
MAUNSELL | ACCOM
茂盛(亞洲)工程顧問有限公司

LEGEND:
 - - - PROJECT BOUNDARY
 ● PAC AIR SENSITIVE RECEIVER

AGREEMENT NO. CE22/2005 (HY)
 TRAFFIC IMPROVEMENTS TO TIEN MUN ROAD TOWN CENTRE SECTION
**CONTOURS OF CUMULATIVE MAXIMUM 24-HOUR AVERAGE RSP
 CONCENTRATION IN UG/m³ AT 1.5m ABOVE GROUND**

(SHEET 1 OF 4)

| | | | |
|---------|-----------|------------|------------|
| SCALE | A3 1:2000 | DATE | SEP. 2007 |
| CHECK | ETLM | DRAWN | LCR |
| JOB NO. | 60025208 | FIGURE NO. | FIGURE 4.4 |
| | | REV | - |





LEGEND:
 - - - PROJECT BOUNDARY
 — AIR SENSITIVE RECEIVER
 ● PC

| | | | |
|---------|-----------|------------|------------|
| SCALE | A3 1:2000 | DATE | SEP. 2007 |
| CHECK | ETLM | DRAWN | LCR |
| JOB NO. | 60025208 | FIGURE NO. | FIGURE 4.4 |
| | | REV | — |

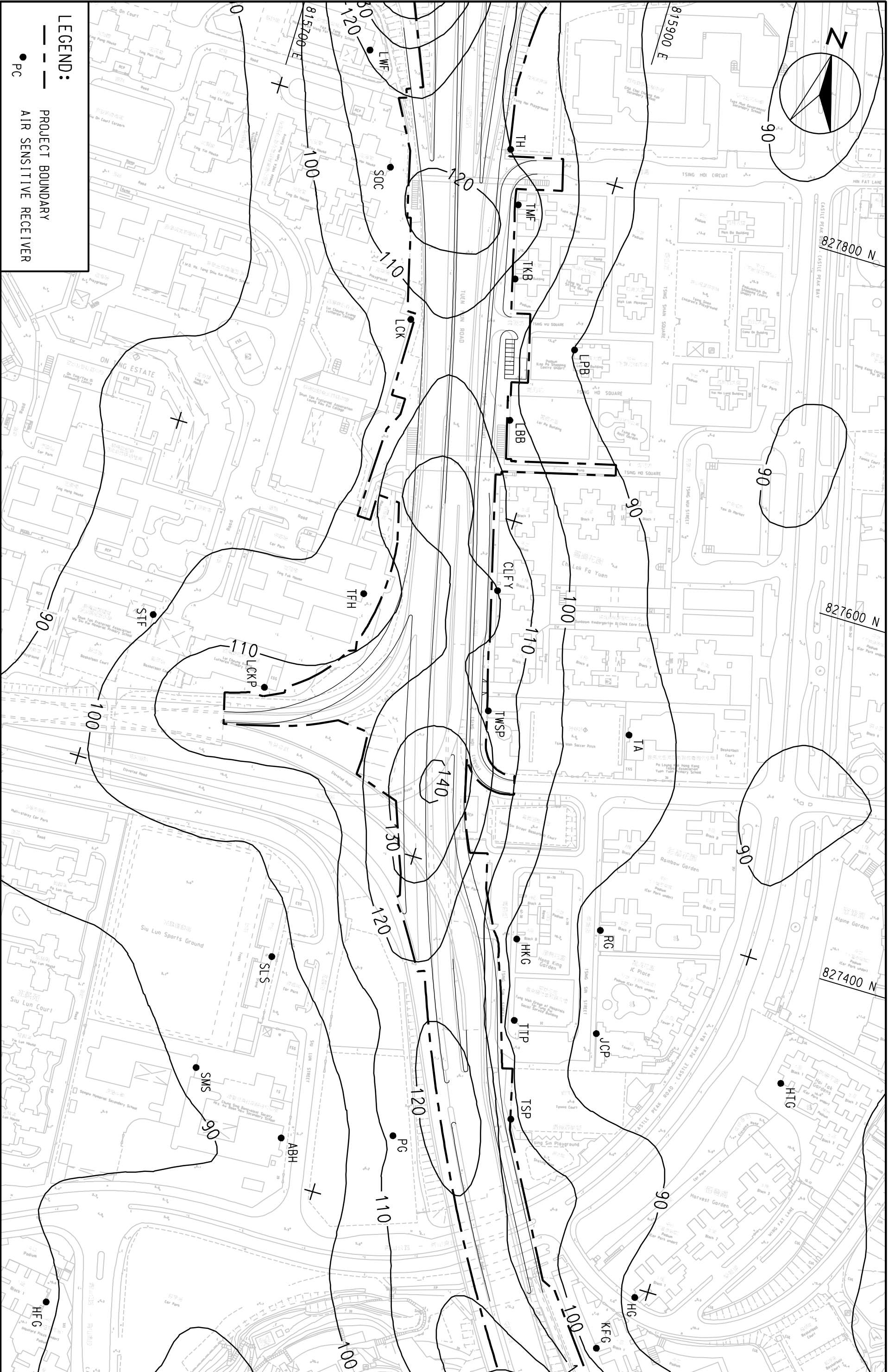
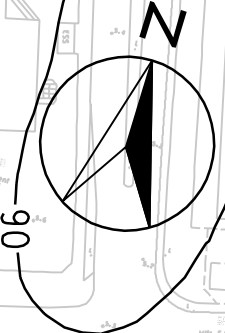
(SHEET 2 OF 4)

AGREEMENT NO. CE22/2005 (HY)
 TRAFFIC IMPROVEMENTS TO TUEN MUN ROAD TOWN CENTRE SECTION
**CONTOURS OF CUMULATIVE MAXIMUM 24-HOUR AVERAGE RSP
 CONCENTRATION IN ug/m³ AT 1.5m ABOVE GROUND**

MAUNSELL | AECOM
 茂盛 (亞洲) 工程顧問有限公司

MAUNSELL
 AECOM
 茂盛(亞洲)工程顧問有限公司

LEGEND:
 - - - PROJECT BOUNDARY
 ● PC AIR SENSITIVE RECEIVER



AGREEMENT NO. CE22/2005 (HY)
 TRAFFIC IMPROVEMENTS TO TIEN MUN ROAD TOWN CENTRE SECTION
 CONTOURS OF CUMULATIVE MAXIMUM 24-HOUR AVERAGE RSP
 CONCENTRATION IN $\mu\text{g}/\text{m}^3$ AT 1.5m ABOVE GROUND

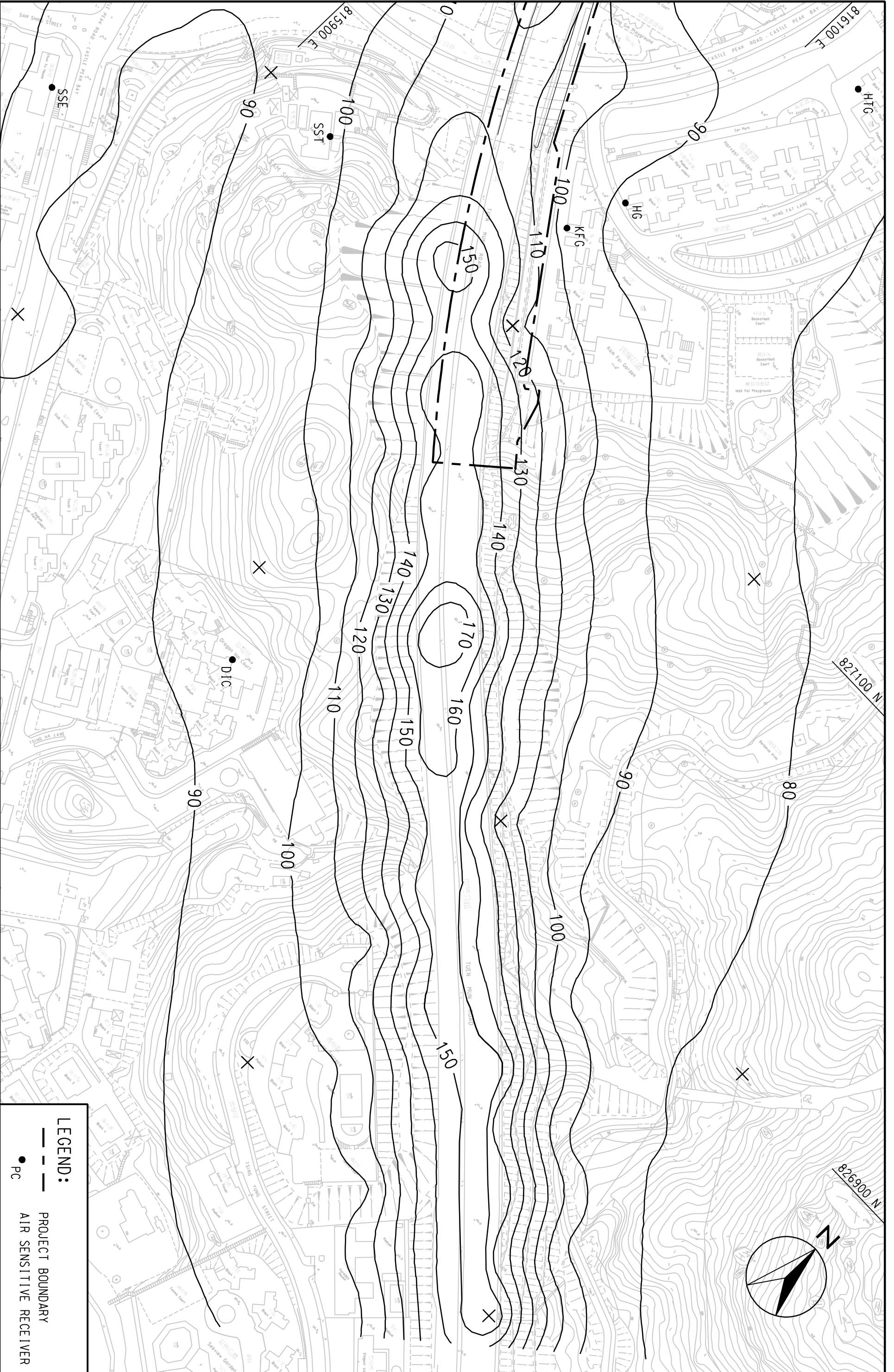
(SHEET 3 OF 4)

| | | | |
|---------|-----------|------------|------------|
| SCALE | A3 1:2000 | DATE | SEP. 2007 |
| CHECK | ETLM | DRAWN | LCR |
| JOB NO. | 60025208 | FIGURE NO. | FIGURE 4.4 |
| | | REV | - |

MAUNSELL | AECOM
 茂盛(亞洲)工程顧問有限公司

AGREEMENT NO. CE22/2005 (HY)
 TRAFFIC IMPROVEMENTS TO TIEN MUN ROAD TOWN CENTRE SECTION
 CONTOURS OF CUMULATIVE MAXIMUM 24-HOUR AVERAGE RSP
 CONCENTRATION IN $\mu\text{g}/\text{m}^3$ AT 1.5m ABOVE GROUND

(SHEET 4 OF 4)



LEGEND:

- PROJECT BOUNDARY
- AIR SENSITIVE RECEIVER
- PC

| SCALE | DATE | SEP. 2007 |
|-----------|----------|------------|
| A3 1:2000 | DATE | SEP. 2007 |
| CHECK | ETLM | LCR |
| JOB NO. | 60025208 | FIGURE NO. |
| | | FIGURE 4.4 |
| | | REV |
| | | - |