

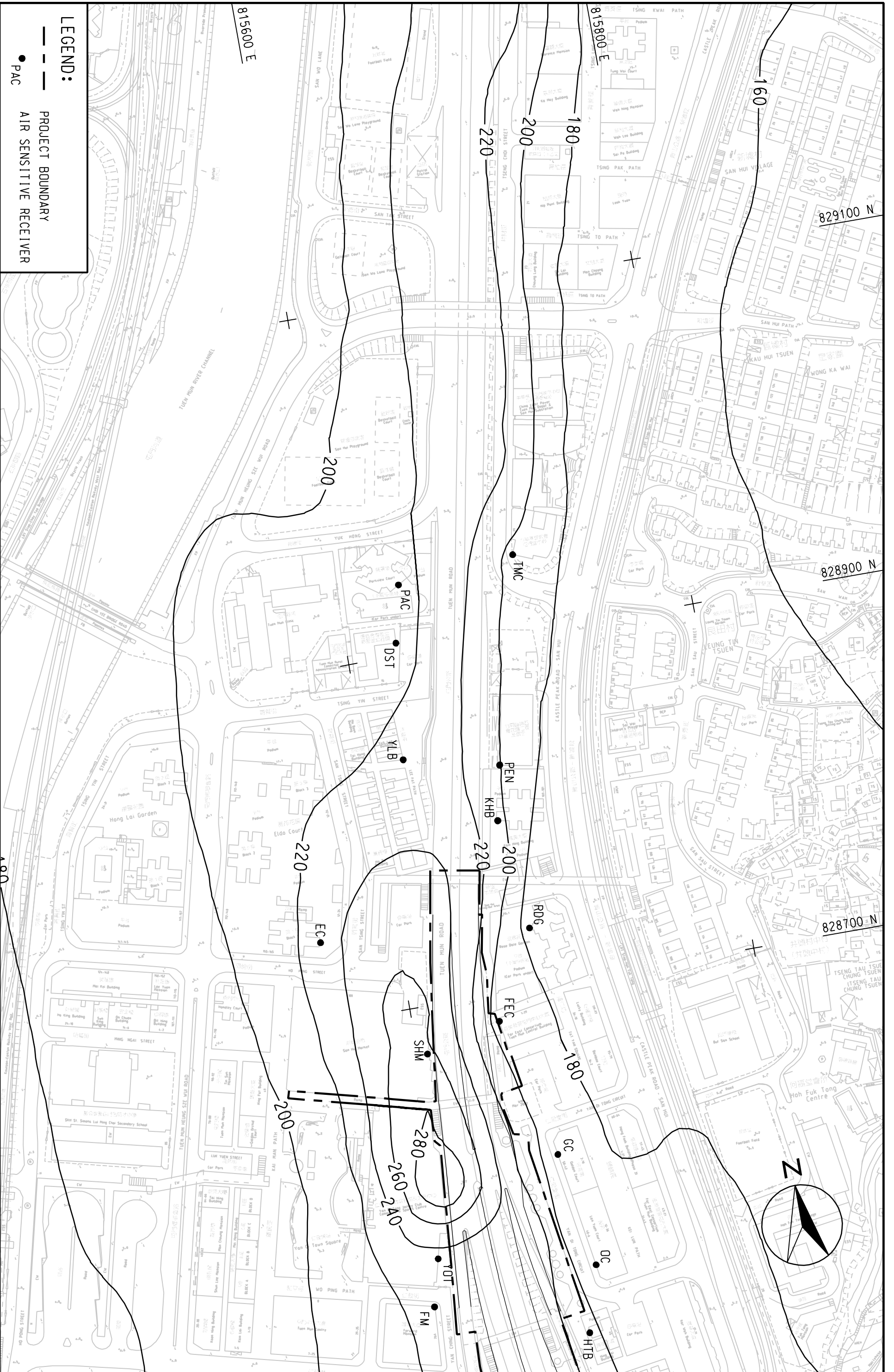
MAUNSELL | AECOM
 茂盛 (亞洲) 工程顧問有限公司

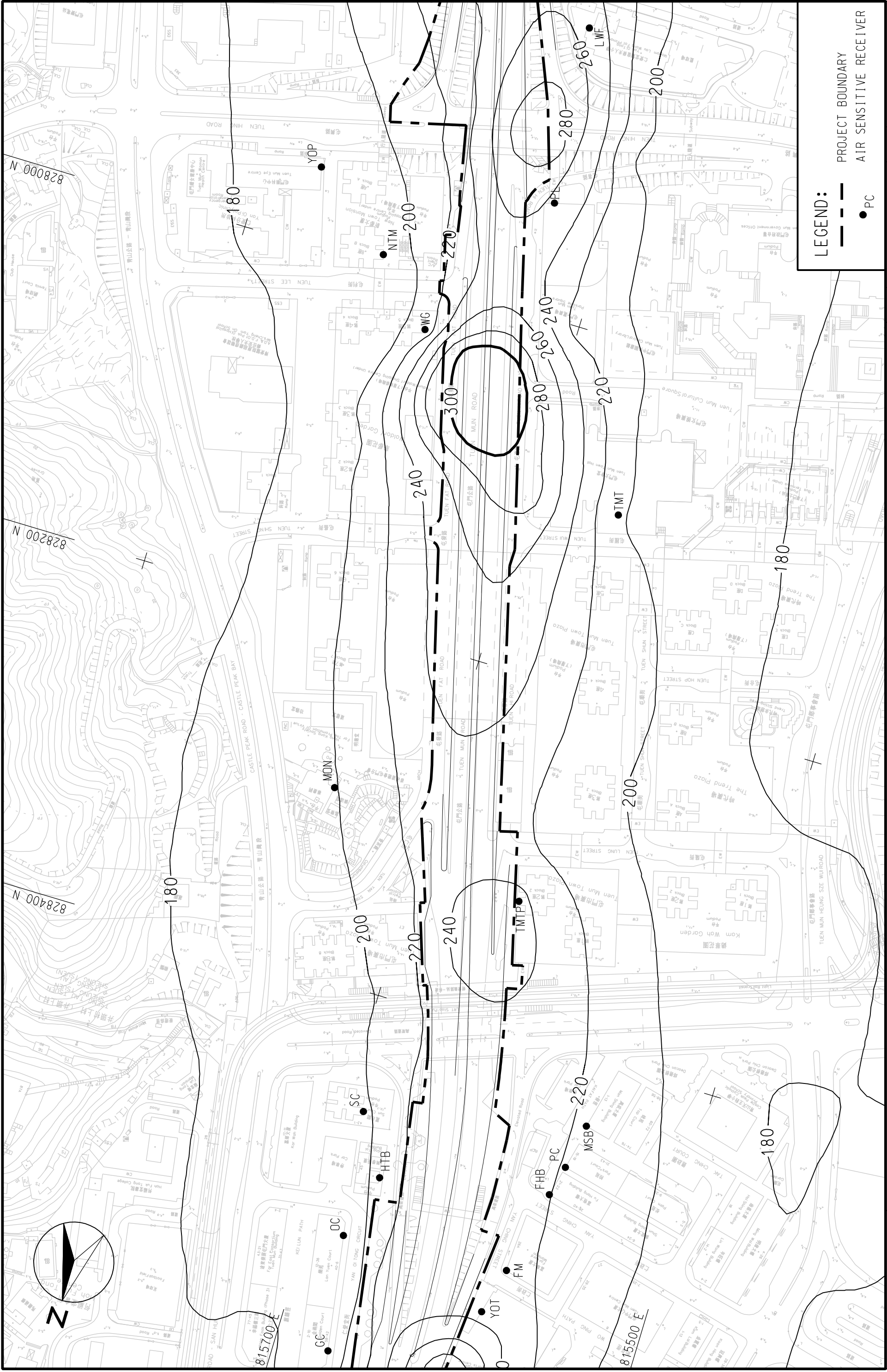
LEGEND:
 - - - - - PROJECT BOUNDARY
 ● AIR SENSITIVE RECEIVER

AGREEMENT NO. CE22/2005 (HY)
 TRAFFIC IMPROVEMENTS TO TIEN MUN ROAD TOWN CENTRE SECTION
 CONTOURS OF CUMULATIVE MAXIMUM 1-HOUR AVERAGE NO₂
 CONCENTRATION IN UG/M³ AT 10m ABOVE GROUND

(SHEET 1 OF 4)

SCALE	A3 1:2000	DATE	SEP. 2007
CHECK	ETLM	DRAWN	LCR
JOB NO.	60025208	FIGURE NO.	FIGURE 4.5
		REV	-





LEGEND:
 - - - PROJECT BOUNDARY
 ● AIR SENSITIVE RECEIVER

SCALE	A3 1:2000	DATE	SEP. 2007
CHECK	ETLM	DRAWN	LCR
JOB No.	60025208	FIGURE No.	FIGURE 4.5
		REV	-

(SHEET 2 OF 4)

AGREEMENT NO. CE22/2005 (HY)
 TRAFFIC IMPROVEMENTS TO TUEN MUN ROAD TOWN CENTRE SECTION
 CONTOURS OF CUMULATIVE MAXIMUM 1-HOUR AVERAGE NO₂
 CONCENTRATION IN ug/m³ AT 10m ABOVE GROUND

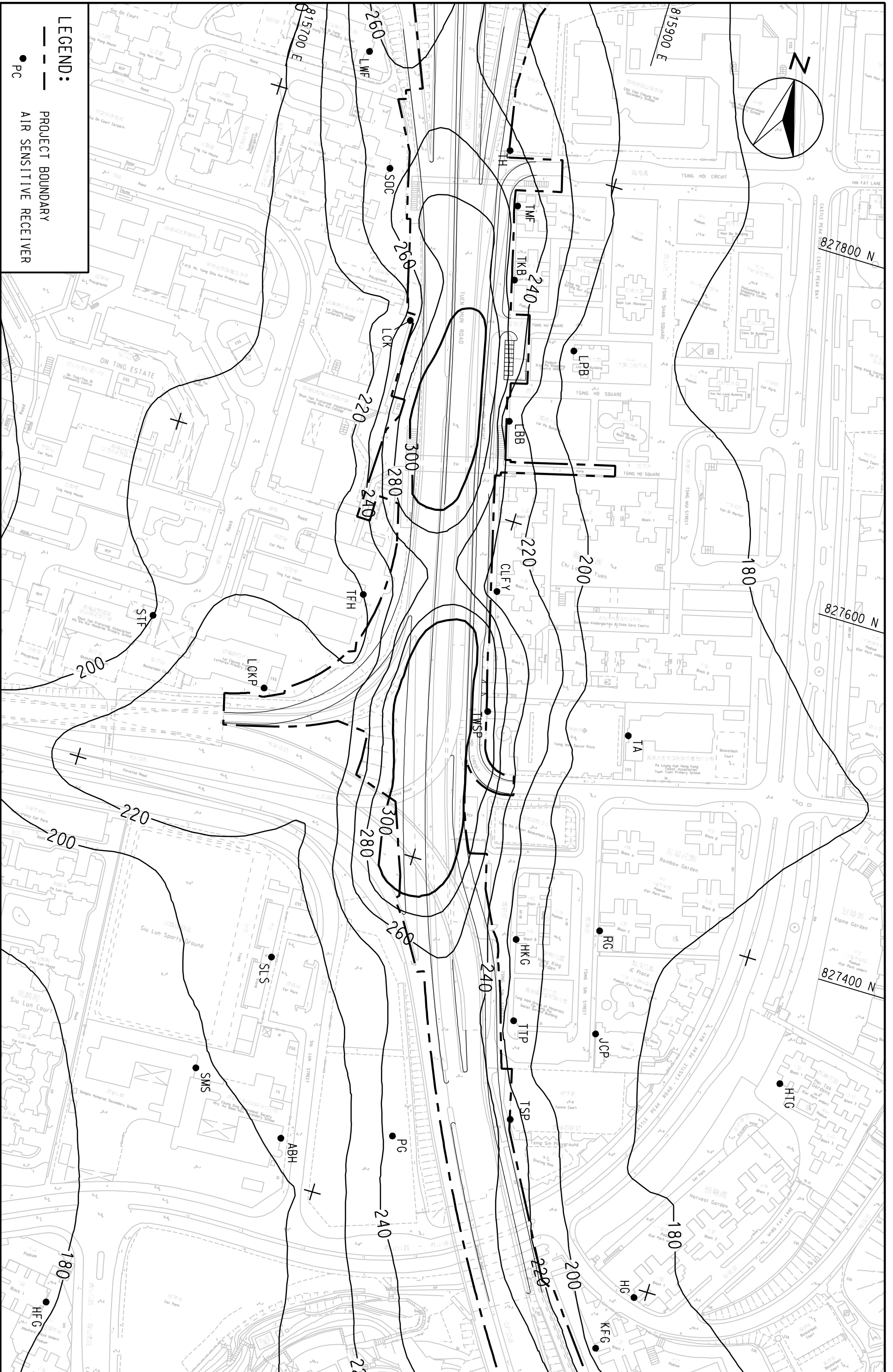
MAUNSELL | AECOM
 茂盛(亞洲)工程顧問有限公司

\$FILES

\$DATES \$

MAUNSELL AECOM
 茂盛(亞洲)工程顧問有限公司

LEGEND:
 - - - PROJECT BOUNDARY
 ● PC AIR SENSITIVE RECEIVER



AGREEMENT NO. CE22/2005 (HY)
 TRAFFIC IMPROVEMENTS TO TIEN MUN ROAD TOWN CENTRE SECTION
 CONTOURS OF CUMULATIVE MAXIMUM 1-HOUR AVERAGE NO₂
 CONCENTRATION IN UG/M³ AT 10m ABOVE GROUND

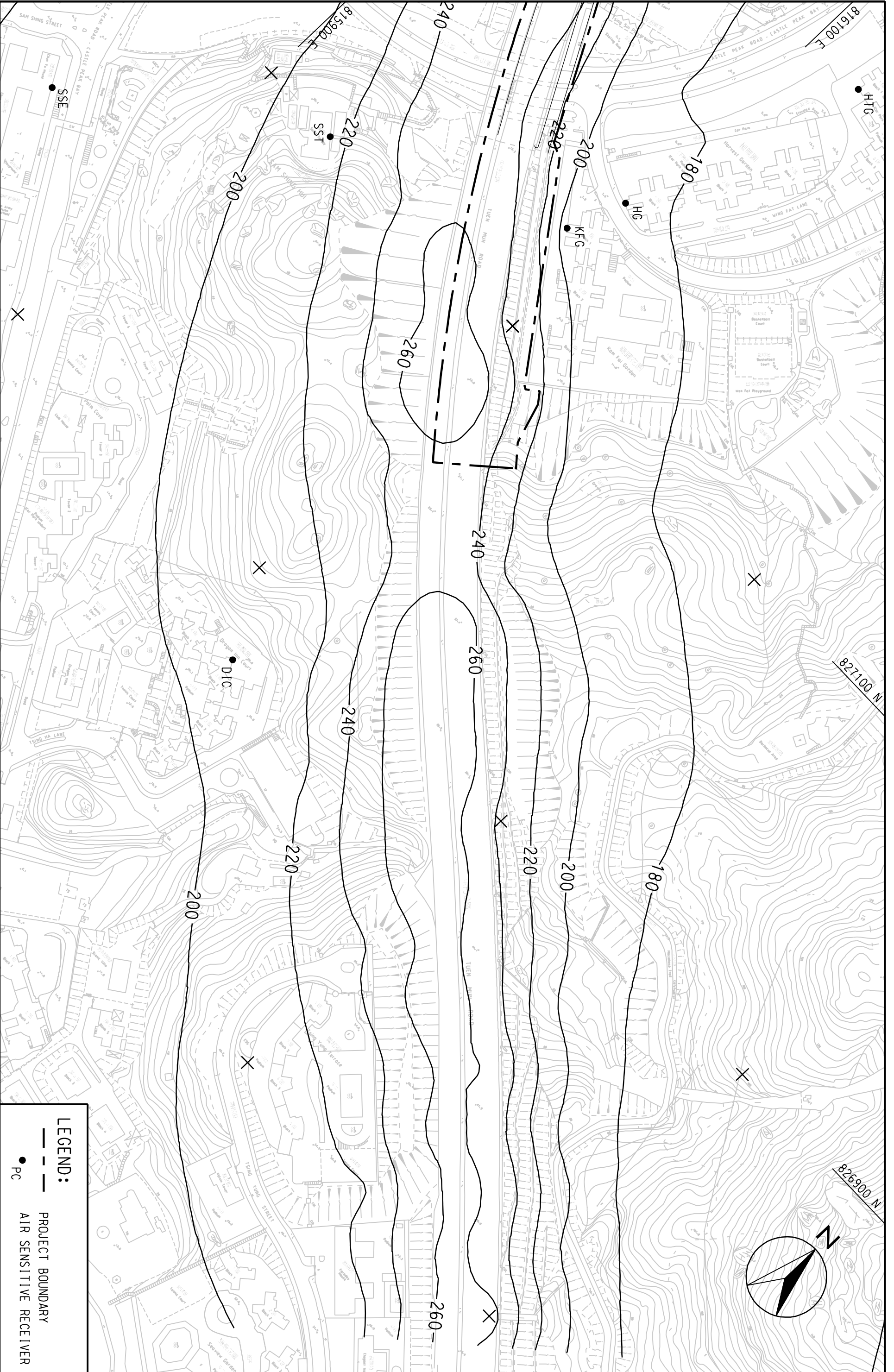
SCALE	A3 1:2000	DATE	SEP. 2007
CHECK	ETLM	DRAWN	LCR
JOB NO.	60025208	FIGURE NO.	FIGURE 4.5
		REV	-

(SHEET 3 OF 4)

MAUNSELL | AECOM
 茂盛 (亞洲) 工程顧問有限公司

AGREEMENT NO. CE22/2005 (HY)
 TRAFFIC IMPROVEMENTS TO TIEN MUN ROAD TOWN CENTRE SECTION
 CONTOURS OF CUMULATIVE MAXIMUM 1-HOUR AVERAGE NO₂
 CONCENTRATION IN UG/m³ AT 10m ABOVE GROUND

(SHEET 4 OF 4)



LEGEND:
 - - - PROJECT BOUNDARY
 ● PC
 — AIR SENSITIVE RECEIVER

SCALE	A3 1:2000	DATE	SEP. 2007
CHECK	ETLM	DRAWN	LCR
JOB NO.	60025208	FIGURE NO.	FIGURE 4.5
		REV	-