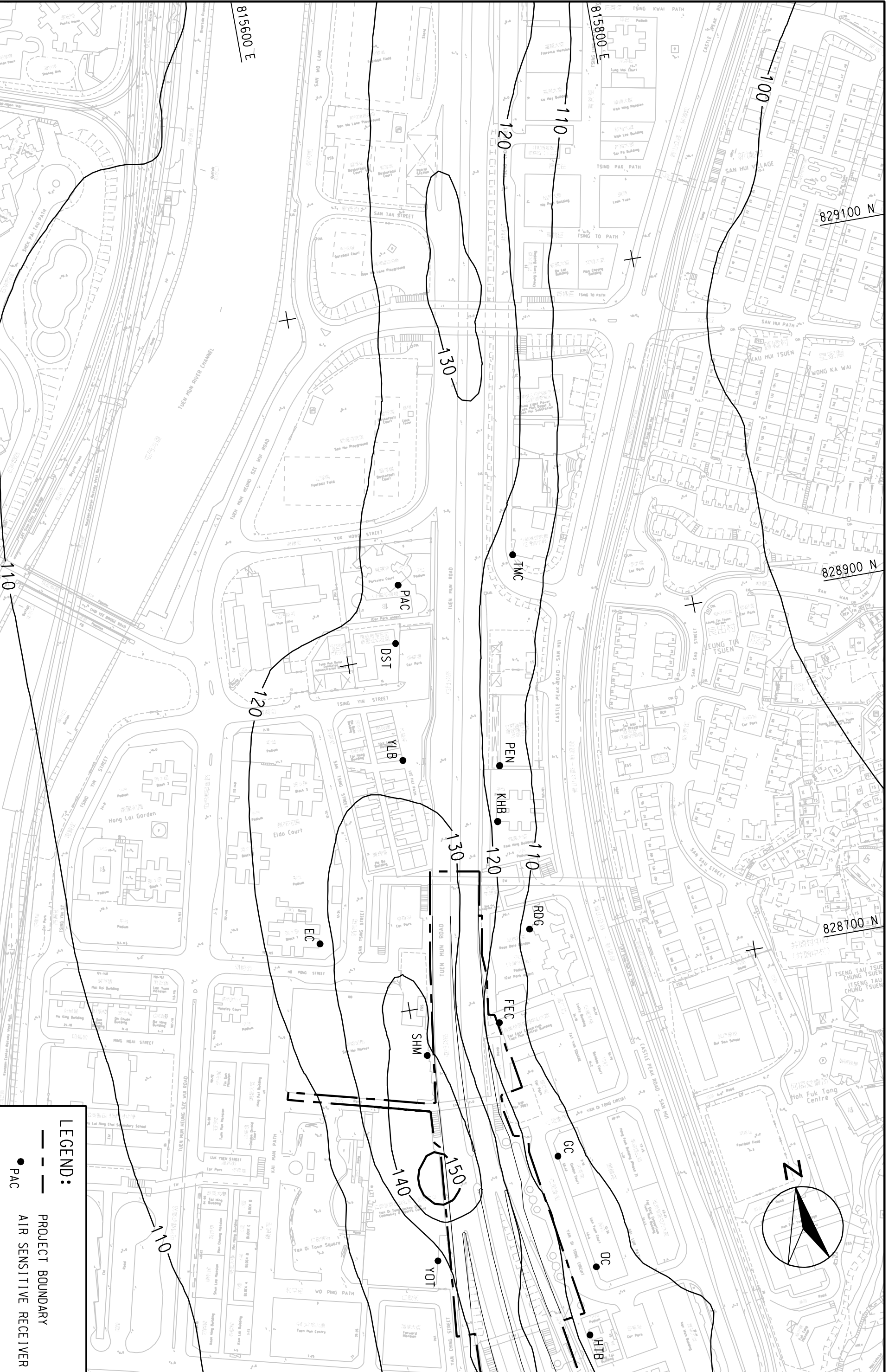


MAUNSELL AECOM
茂盛(亞洲)工程顧問有限公司

AGREEMENT NO. CE22/2005 (HY)
TRAFFIC IMPROVEMENTS TO TIEN MUN ROAD TOWN CENTRE SECTION
CONTOURS OF CUMULATIVE MAXIMUM 24-HOUR AVERAGE NO₂
CONCENTRATION IN UG/m³ AT 10m ABOVE GROUND

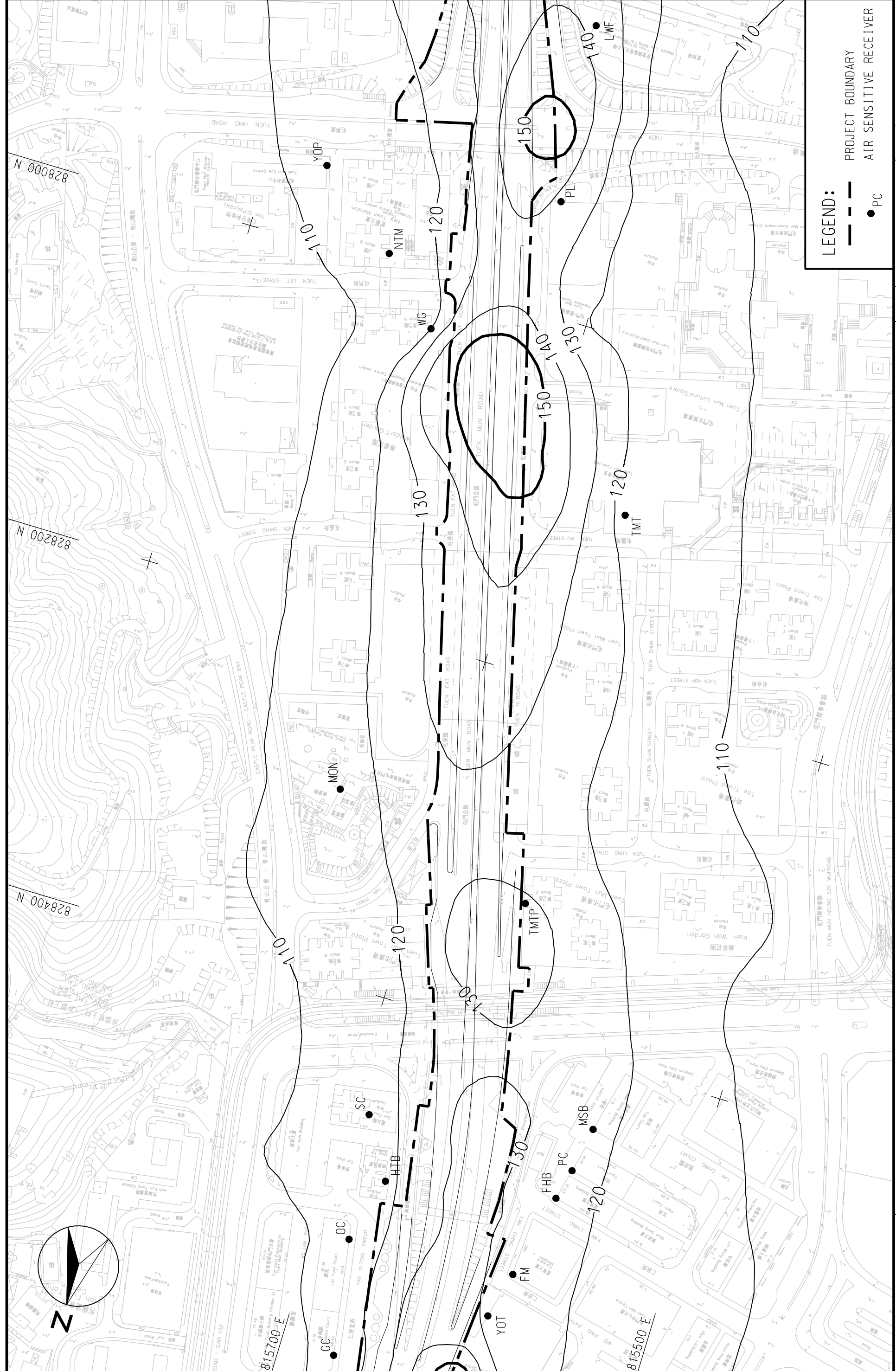
(SHEET 1 OF 4)

SCALE	A3 1:2000	DATE	SEP. 2007
CHECK	ETLM	DRAWN	LCR
JOB NO.	60025208	FIGURE NO.	FIGURE 4.6
		REV	-



LEGEND:

- PROJECT BOUNDARY
- AIR SENSITIVE RECEIVER



LEGEND:

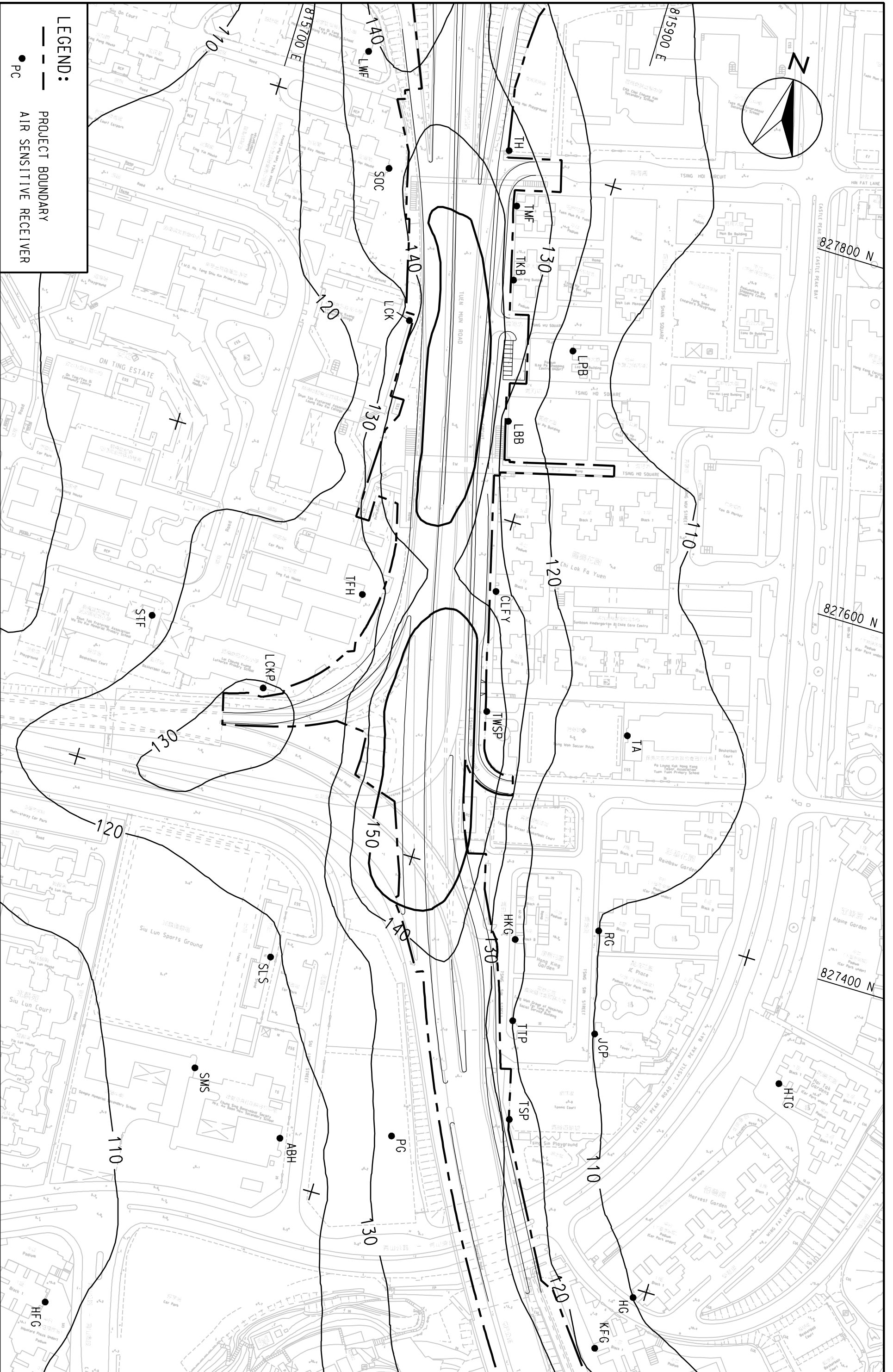
- PROJECT BOUNDARY
- PC AIR SENSITIVE RECEIVER

MAUNSELL AECOM 茂盛(亞洲)工程顧問有限公司		AGREEMENT NO. CE22(2005 (HY)) TRAFFIC IMPROVEMENTS TO TUEN MUN ROAD TOWN CENTRE SECTION		SCALE A3 1:2000	DATE SEP. 2007
		CONTOURS OF CUMULATIVE MAXIMUM 24-HOUR AVERAGE NO ₂ CONCENTRATION IN $\mu\text{g}/\text{m}^3$ AT 10m ABOVE GROUND		CHECK JOB NO.	DRAWN E.TLM FIGURE NO.
				REV FIGURE 4.6	
				60025208	

(SHEET 2 OF 4)

MAUNSELL | AECOM
 茂盛(亞洲)工程顧問有限公司

LEGEND:
 - - - PROJECT BOUNDARY
 ● PC AIR SENSITIVE RECEIVER



AGREEMENT NO. CE22/2005 (HY)
 TRAFFIC IMPROVEMENTS TO TIEN MUN ROAD TOWN CENTRE SECTION
 CONTOURS OF CUMULATIVE MAXIMUM 24-HOUR AVERAGE NO₂
 CONCENTRATION IN UG/M³ AT 10m ABOVE GROUND

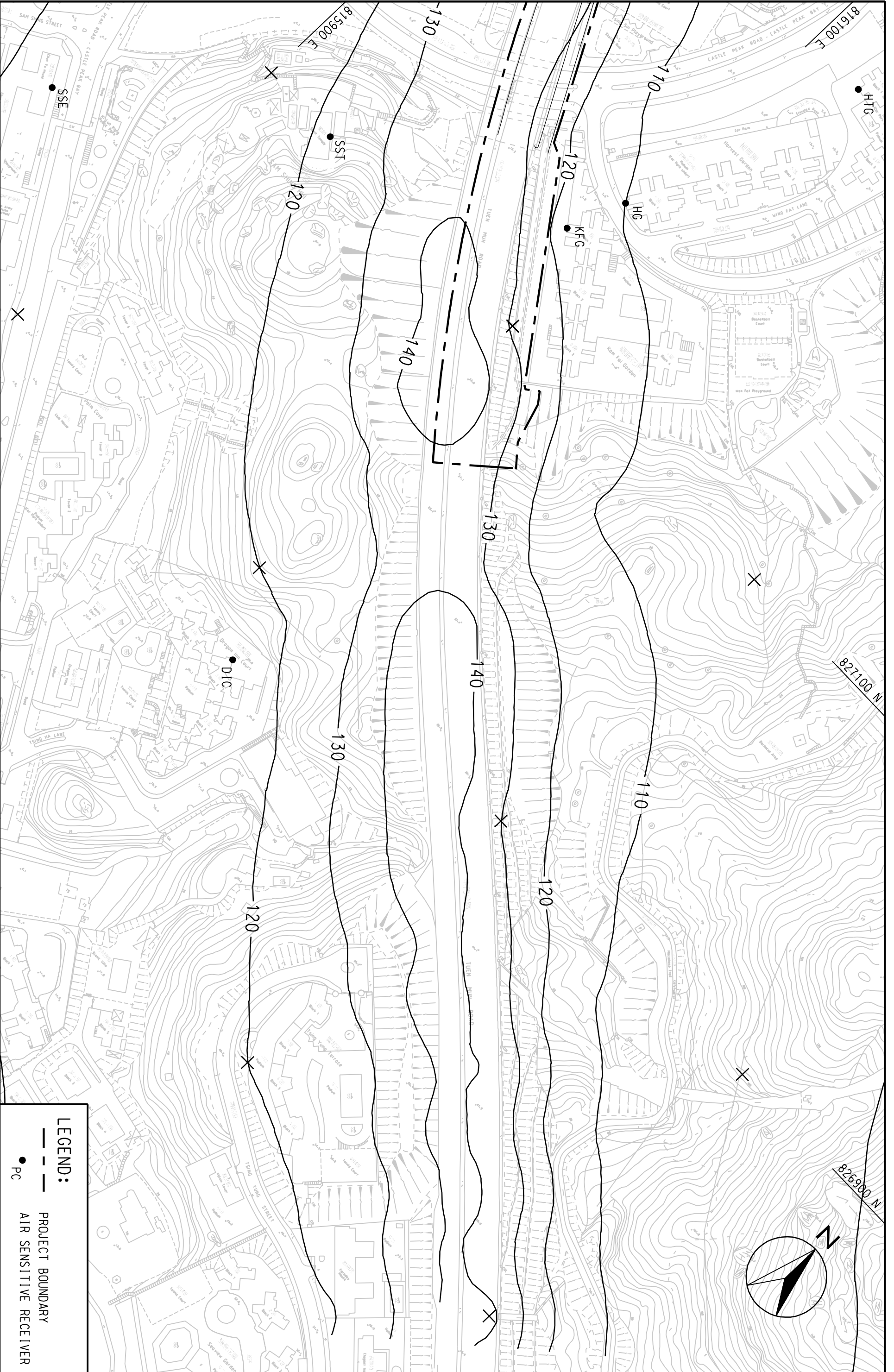
(SHEET 3 OF 4)

SCALE	A3 1:2000	DATE	SEP. 2007
CHECK	ETLM	DRAWN	LCR
JOB NO.	60025208	FIGURE NO.	FIGURE 4.6
		REV	-

MAUNSELL | AECOM
 茂盛(亞洲)工程顧問有限公司

AGREEMENT NO. CE22/2005 (HY)
 TRAFFIC IMPROVEMENTS TO TIEN MUN ROAD TOWN CENTRE SECTION
 CONTOURS OF CUMULATIVE MAXIMUM 24-HOUR AVERAGE NO₂
 CONCENTRATION IN UG/M³ AT 10m ABOVE GROUND

(SHEET 4 OF 4)



LEGEND:

- PROJECT BOUNDARY
- AIR SENSITIVE RECEIVER
- PC

SCALE	A3 1:2000	DATE	SEP. 2007
CHECK	ETLM	DRAWN	LCR
JOB NO.	60025208	FIGURE NO.	FIGURE 4.6
		REV	-