

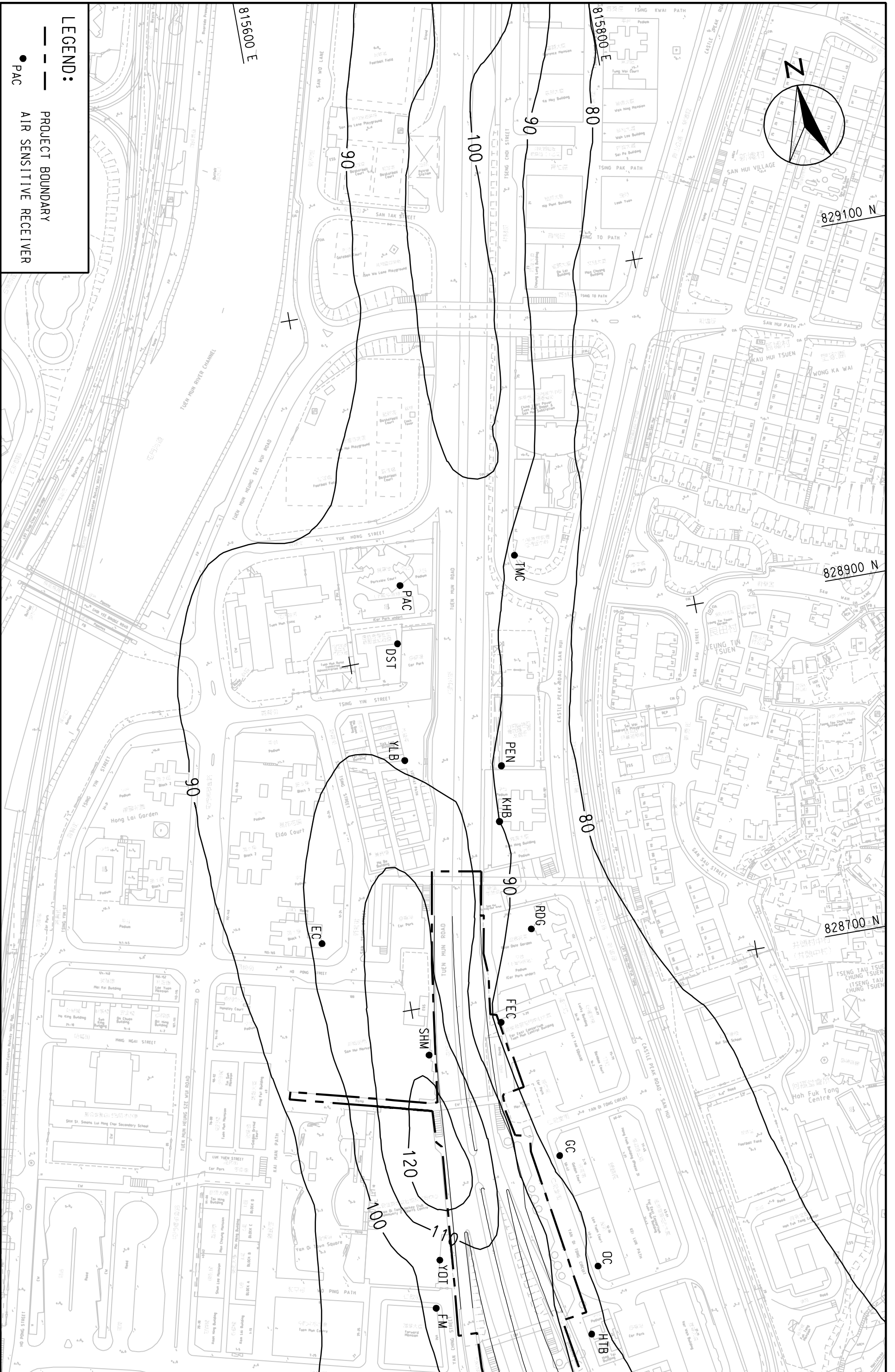
MAUNSELL | AECOM
 茂盛(亞洲)工程顧問有限公司

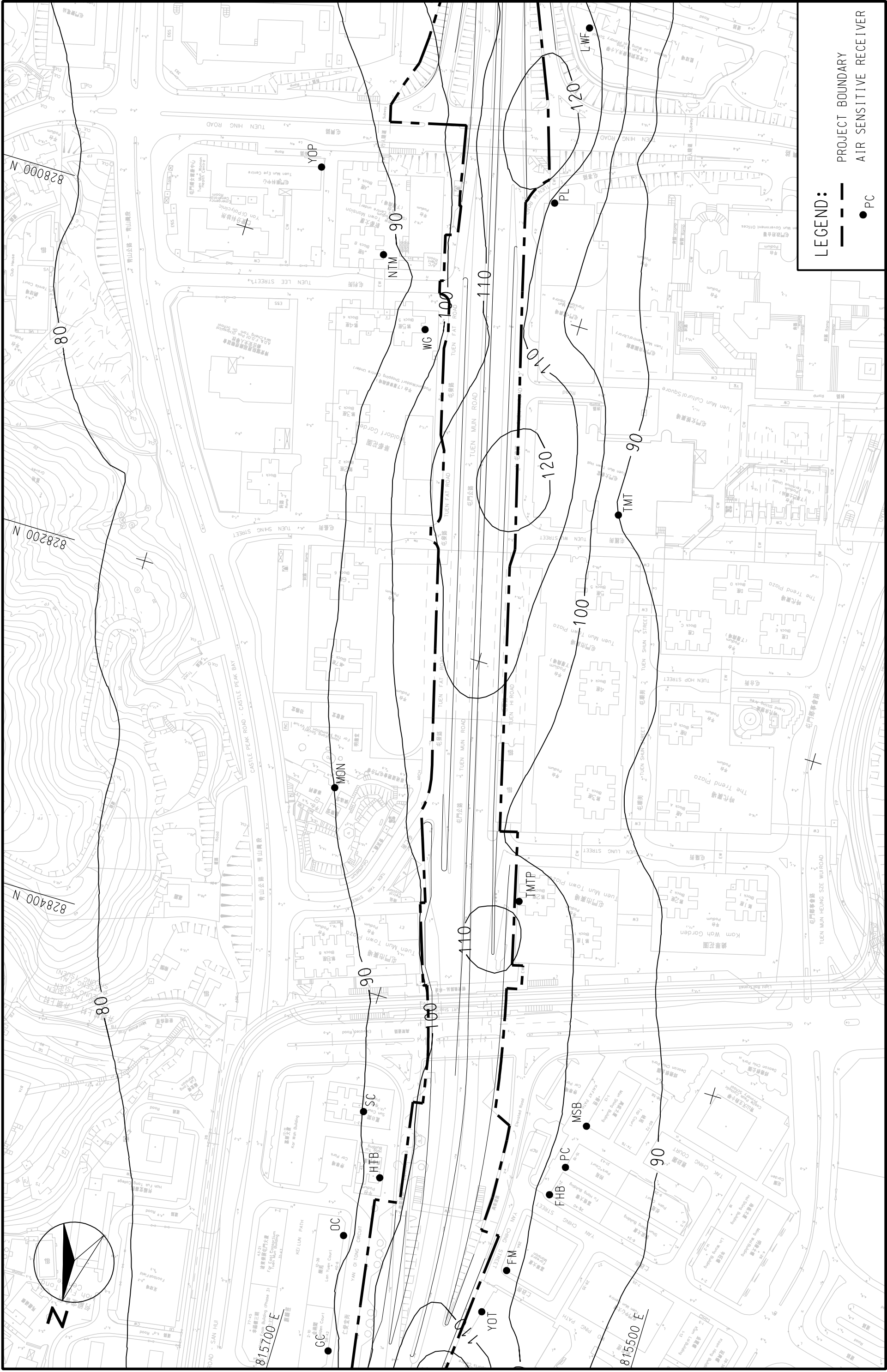
LEGEND:
 - - - PROJECT BOUNDARY
 ● AIR SENSITIVE RECEIVER

AGREEMENT NO. CE22/2005 (HY)
 TRAFFIC IMPROVEMENTS TO TIEN MUN ROAD TOWN CENTRE SECTION
 CONTOURS OF CUMULATIVE MAXIMUM 24-HOUR AVERAGE RSP
 CONCENTRATION IN UG/m³ AT 10m ABOVE GROUND

(SHEET 1 OF 4)

SCALE	A3 1:2000	DATE	SEP. 2007
CHECK	ETLM	DRAWN	LCR
JOB NO.	60025208	FIGURE NO.	FIGURE 4.7
		REV	-





LEGEND:

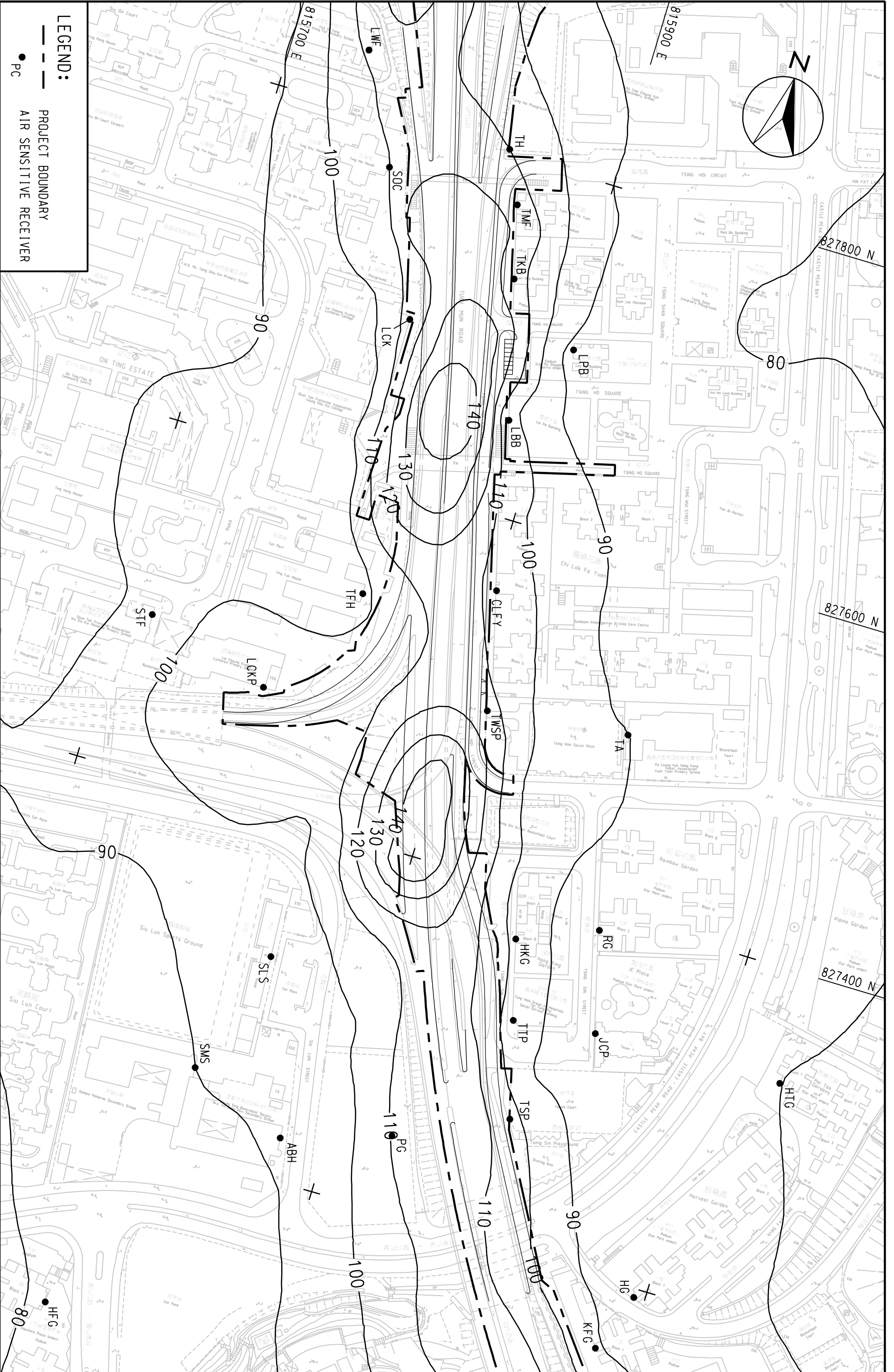
- PROJECT BOUNDARY
- AIR SENSITIVE RECEIVER

MAUNSELL AECOM 茂盛(亞洲)工程顧問有限公司	AGREEMENT NO. CE22/2005 (HY) TRAFFIC IMPROVEMENTS TO TUEN MUN ROAD TOWN CENTRE SECTION CONTOURS OF CUMULATIVE MAXIMUM 24-HOUR AVERAGE RSP CONCENTRATION IN $\mu\text{g}/\text{m}^3$ AT 10m ABOVE GROUND	SCALE: A3 1:2000 CHECK: ETLM JOB No.: 60025208	DATE: SEP. 2007 DRAWN: LCR FIGURE No.: FIGURE 4.7 REV: -
---	---	--	---

(SHEET 2 OF 4)

MAUNSELL AECOM
茂盛(亞洲)工程顧問有限公司

LEGEND:
 - - - PROJECT BOUNDARY
 ● AIR SENSITIVE RECEIVER
 ● PC



AGREEMENT NO. CE22/2005 (HY)
 TRAFFIC IMPROVEMENTS TO TIEN MUN ROAD TOWN CENTRE SECTION
 CONTOURS OF CUMULATIVE MAXIMUM 24-HOUR AVERAGE RSP
 CONCENTRATION IN UG/M³ AT 10M ABOVE GROUND

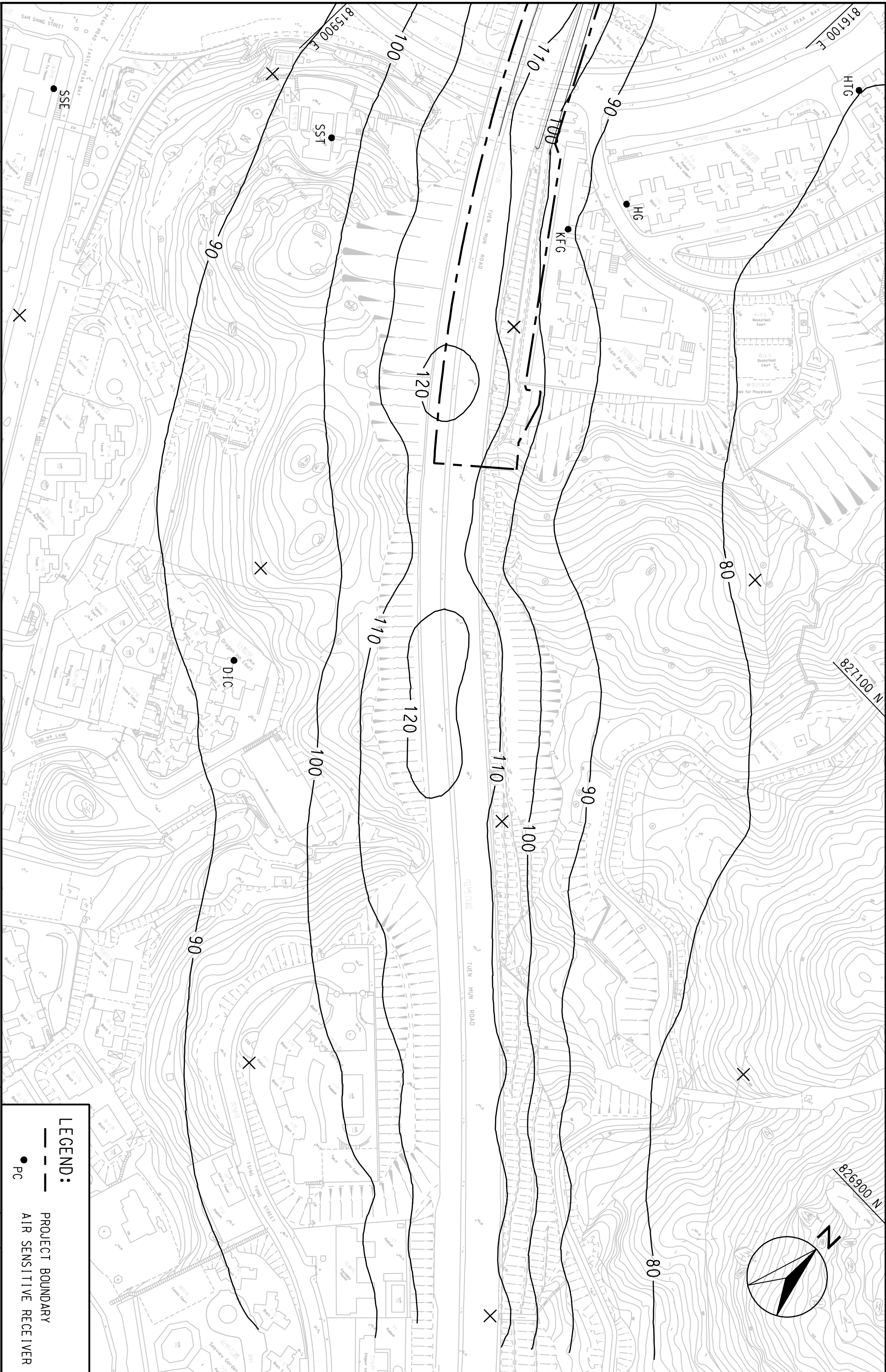
(SHEET 3 OF 4)

SCALE	A3 1:2000	DATE	SEP. 2007
CHECK	ETLM	DRAWN	LCR
JOB NO.	60025208	FIGURE NO.	FIGURE 4.7
		REV	-

MAUNSELL | AECOM
 茂盛(亞洲)工程顧問有限公司

AGREEMENT NO. CE22/2005 (HY)
 TRAFFIC IMPROVEMENTS TO TIEN MUN ROAD TOWN CENTRE SECTION
 CONTOURS OF CUMULATIVE MAXIMUM 24-HOUR AVERAGE RSP
 CONCENTRATION IN UG/m³ AT 10m ABOVE GROUND

(SHEET 4 OF 4)



LEGEND:

- PROJECT BOUNDARY
- AIR SENSITIVE RECEIVER

SCALE	A3 1:2000	DATE	SEP. 2007
CHECK	ETLM	DRAWN	LCR
JOB NO.	60025208	FIGURE NO.	FIGURE 4.7
		REV	-