

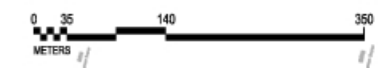
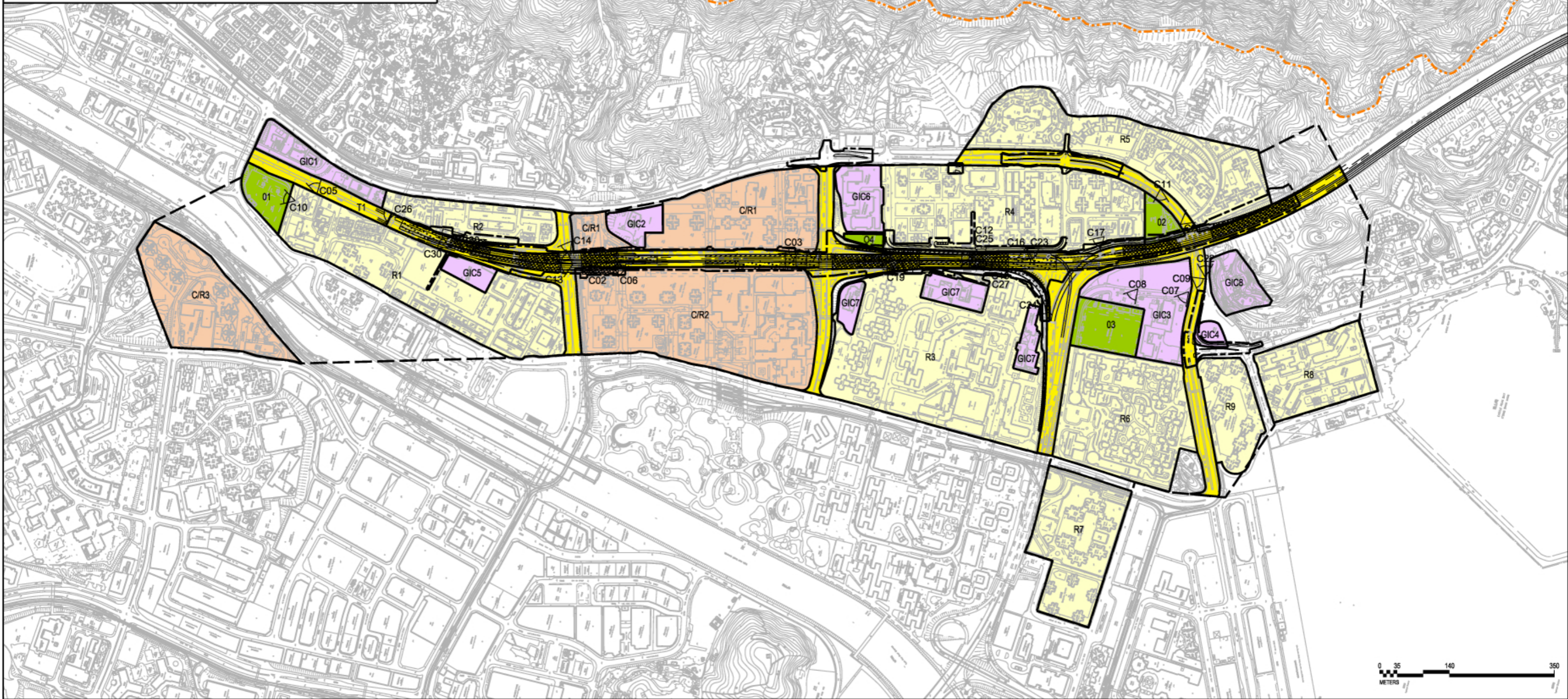
KEY PLAN FOR VSR

C/R1	Tuen Mun Town Plaza, Waldorf Garden
C/R2	Tuen Cultural Centre, Tuen Mun Town Plaza
C/R3	Chelsea Height
GIC1	Tuen Mun Church and Tuen Mun Tseng Choi Street Joint-user Complex
GIC2	Sin Hing Tong Temple
GIC3	Semple Memorial Secondary School and Chung Shing Benevolent Society Mrs. Aw Boon Haw Secondary School
GIC4	Carpark (Open)
GIC5	Yan Oi Tong Community & Sports Centre
GIC6	Tuen Mun Government Secondary School, Choi Cheung Kok Secondary School
GIC7	Madam Lau Wong Fat Primary School, Lui Cheung Kwong College, Leung Kau Kui College, Lui Cheung Kwong Primary School, Wu Siu Kui Primary School
GIC8	Sam Shing Temple

O1	San Hui Playground
O2	Tsing Sin Playground
O3	Siu Lun Sports Ground
R1	Residential Area of Tuen Mun San Hui
R2	Residential Area along Yan Oi Tong Circuit
R3	On Ting Estate and Siu On Court
R4	Residential Area along Tsing Hoi Circuit
R5	Handsome Court, Alpine Garden, Hoi Tak Garden and Harvest Garden, Kam Fai Garden
R6	Siu Lun Court
R7	Goodview Garden and Tsui Ning Garden
R8	Sam Shing Estate
R9	Hanford Garden
T1	Tuen Mun Road – Vehicular and Pedestrian

LEGEND

- PROPOSED WORKS AREA BOUNDARY
- COUNTRY PARK BOUNDARY
- LIMIT OF PRIMARY ZONE OF VISUAL INFLUENCE
- COMMERCIAL / RESIDENTIAL
- GOVERNMENT, INSTITUTION OR COMMUNITY
- TRANSPORT
- OPEN SPACE
- RESIDENTIAL
- PHOTO TAKING POINT WITH PHOTO NO.



MAUNSELL | AECOM
 茂盛(亞洲)工程顧問有限公司

AGREEMENT NO. CE22/2005 (HY)
 TRAFFIC IMPROVEMENTS TO TUEN MUN ROAD TOWN CENTRE SECTION

BASELINE KEY VSRs AND PRIMARY ZONE OF VISUAL INFLUENCE WITH DEVELOPMENT PROPOSAL OVERLAID

SCALE	A3 1: 8000	DATE	
CHECK	J.T.	DRAWN	F.L.
JOB No.	60025208	FIGURE No.	FIGURE 8.4
		REV	-