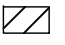
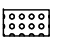

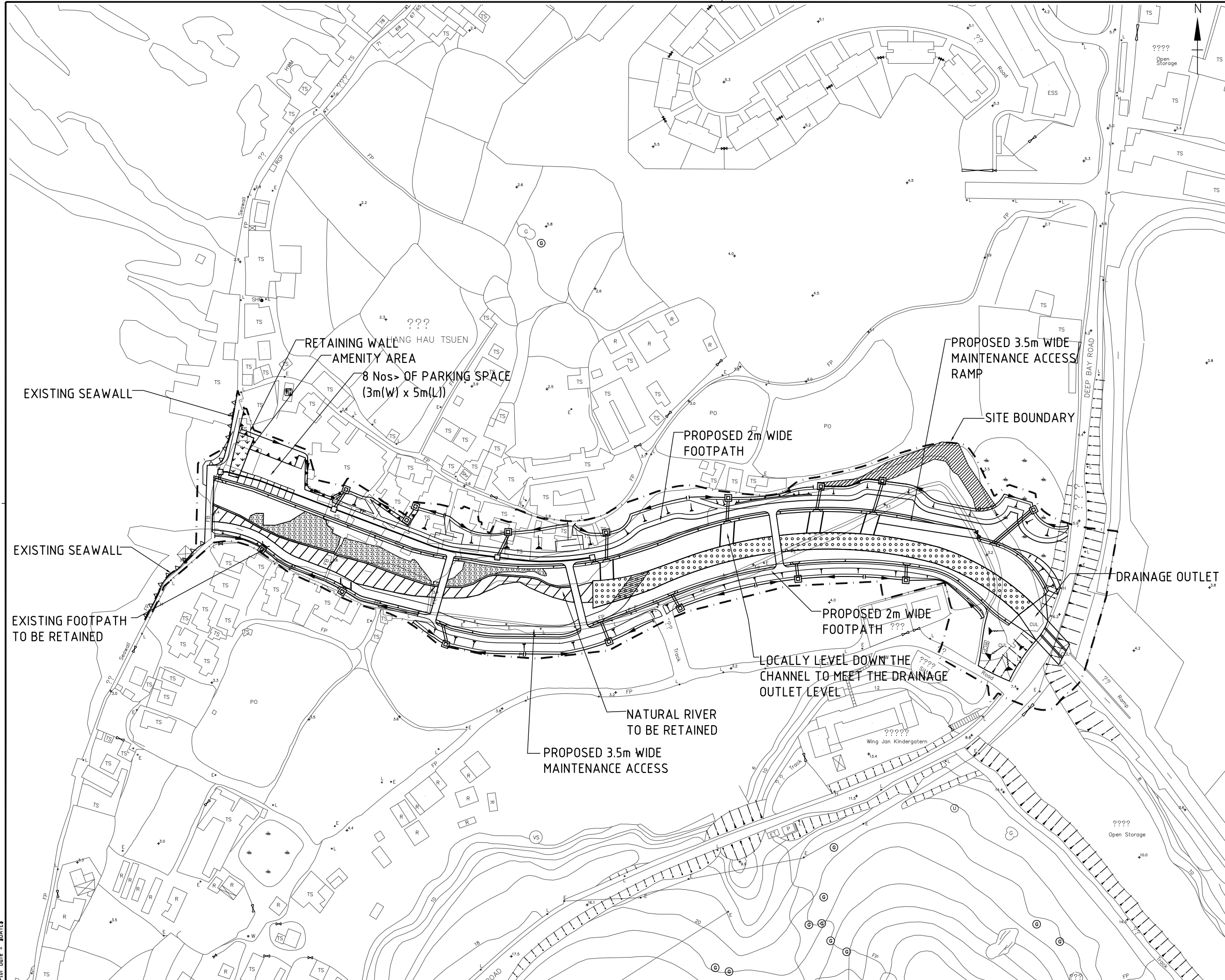


**LEGEND**

- SUBJECT SITE
-  EXISTING RIVER TO BE RETAINED
-  PROPOSED LOW FLOW CHANNEL
-  EXISTING MANGROVES TO BE RETAINED



RETAINING WALL AMENITY AREA  
8 Nos. OF PARKING SPACE  
(3m(W) x 5m(L))

PROPOSED 3.5m WIDE MAINTENANCE ACCESS RAMP

PROPOSED 2m WIDE FOOTPATH

SITE BOUNDARY

EXISTING SEAWALL

EXISTING SEAWALL

EXISTING FOOTPATH TO BE RETAINED

DRAINAGE OUTLET

PROPOSED 2m WIDE FOOTPATH  
LOCALLY LEVEL DOWN THE CHANNEL TO MEET THE DRAINAGE OUTLET LEVEL

NATURAL RIVER TO BE RETAINED

PROPOSED 3.5m WIDE MAINTENANCE ACCESS

Revision	Date	Description	Initial
B	10/08	GENERAL REVISION	MAK
A	06/08	GENERAL REVISION	MAK
	Designed	Checked	Drawn
Initial			
Date			

project  
HANG HAUTSUEN CHANNEL AT LAU FAU SHAN

Drawing Title  
SITE PLAN

Plan Register No.	Revision
FIGURE 9.1	B

Scale  
A3 1:1500

土木工程拓展署  
**CEDD Civil Engineering and Development Department**

  
BLACK & VEATCH HONG KONG LIMITED  
博威工程顧問有限公司