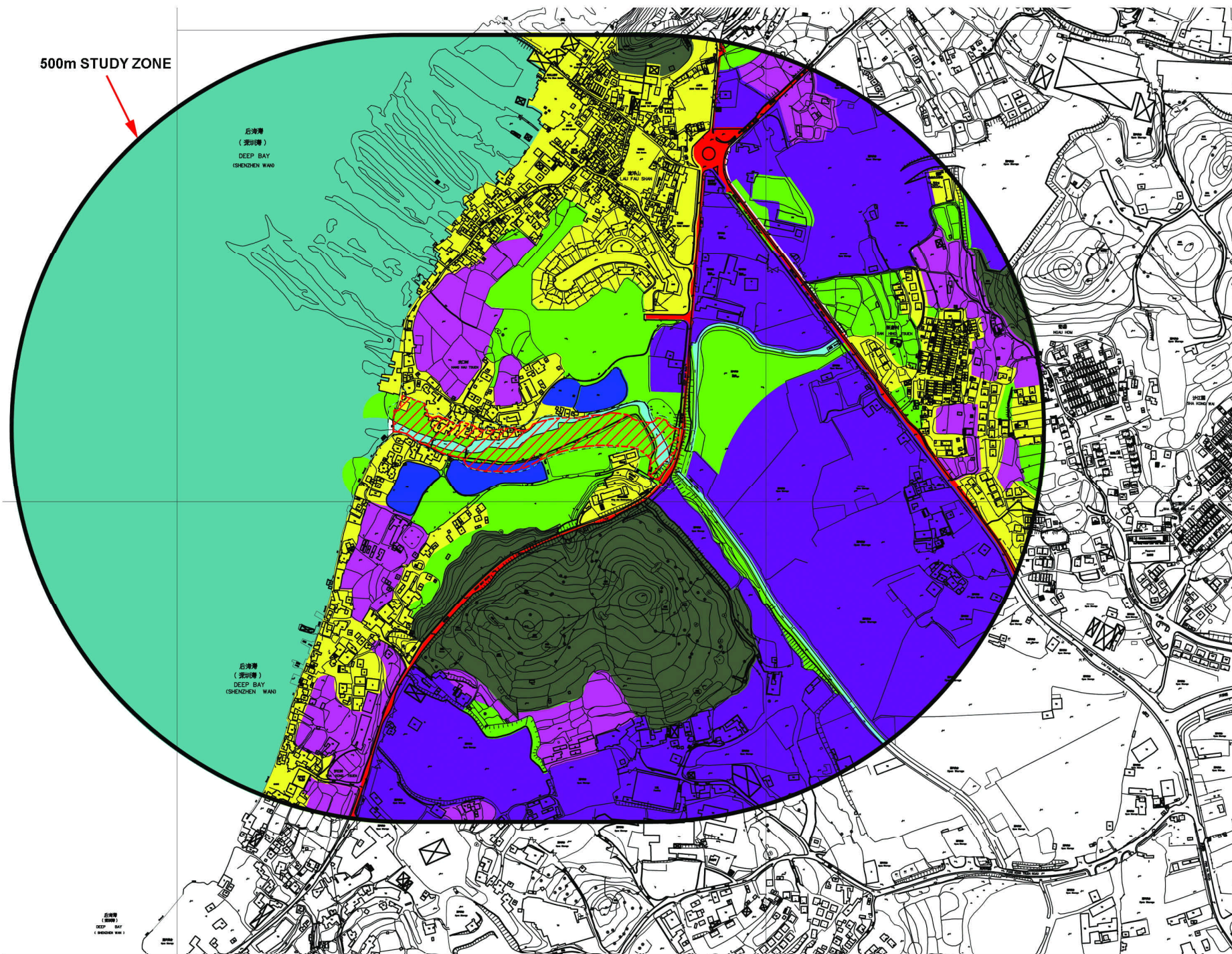


500m STUDY ZONE



NOTES:

-  Subject Site
-  LE4 Open Storage
-  LE1 Woodland
-  LE3 Residential settlement area
-  LE2 Vehicle Corridor
-  LE5 Stream Course
-  LE6 Fish Pond
-  LE7 Open Water (Deep Bay)
-  LE8 Agricultural land
-  LE9 Scrubland / Grassland and Roadside Planting

Revision	Date		Description		Initial	
	Designed	Checked	Drawn	Checked	Initial	Checked
Initial	KSC	YSY	JT	PKL		
Date	04/07	04/07	04/07	04/07		

Approved

AGREEMENT NO. CE 3/74

project
PWP ITEM NO. 705 -
HANG HAU TSUEN CHANNEL
AT LAU FAU SHAN

Drawing Title
LANDSCAPE ELEMENTS(LE's)

Plan Register No. FIGURE - 9.3	Revision A
--	----------------------

Scale

土木工程拓展署
CEDD Civil Engineering and
Development Department


BLACK & VEATCH HONG KONG LIMITED
博威工程顧問有限公司