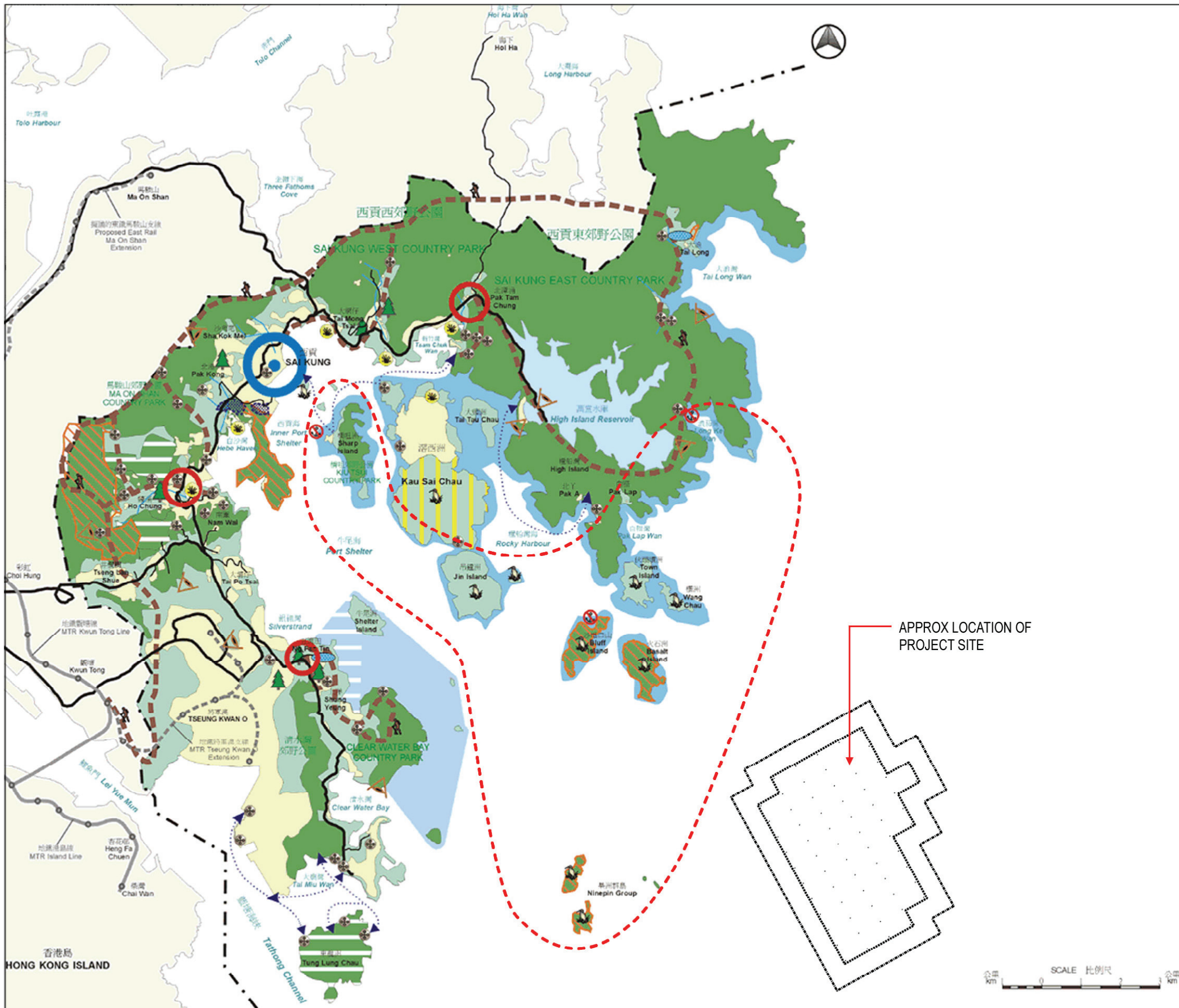


新界東南發展策略檢討研究  
STUDY ON SOUTH EAST NEW TERRITORIES DEVELOPMENT STRATEGY REVIEW  
景觀及自然保育大綱  
Landscape and Conservation Framework



- 圖例 LEGEND**
- 研究範圍 Study Area
  - 現有/建議的發展地區 Existing / Proposed Development Area
  - 現有的自然保育區(郊野公園、自然保育區及郊野自然保育區) Existing Conservation Area (Country Park, Conservation Area & Countryside Conservation Area)
  - 現有的具特殊科學價值地點 Existing Sites of Special Scientific Interest
  - 現有的特別地區 Existing Special Area
  - 主要河流 Major River
  - 瞭望點 Vantage Point

- 擬議的土地用途 PROPOSED LAND USES**
- Potential Site For Geological Park
  - 具自然保育用途的康樂區 Recreation / Conservation Area
  - 景觀保護區 Landscape Protection Area
  - 具潛質劃作郊野公園的地區 Potential Country Park
  - 具潛質劃作海岸公園的地區 Potential Marine Park
  - 可作進一步考慮劃作海岸公園的地區 Potential Marine Park (Subject to Further Consideration)
  - 具潛質劃作海洋保育的地區 Potential Marine Conservation Area
  - 步行徑/文物徑 Walking Trail / Heritage Trail
  - 海上文物遊 Heritage Boat Trail
  - 加強對淡水濕地保育的地區 Enhanced Control for Freshwater Wetland Conservation
  - 加強對林地保育的地區 Enhanced Control for Woodland Conservation
  - 加強對海鳥/其他野生動物保育的地區 Enhanced Control for Seabirds / Other Wildlife Conservation
  - 不適宜錨船點 Non-Anchoring Point
  - 旅遊門廊 Gateway Centre
  - 景觀樞紐 Landscape Nodal Point
  - 古蹟文物地點 Cultural Heritage Site
  - 優化紅樹林區 Enhancement of Mangrove Area

APPROX LOCATION OF PROJECT SITE



規劃署 PLANNING DEPARTMENT  
都市規劃顧問有限公司 CITY PLANNING CONSULTANTS LTD

A	11.02.09	Addition of Proposed Geopark Boundary	LW	MT	AD														
Amendment No.	Date	Description	Drawn by	Checked by	Approved by	Drawn by	LW	Checked by	DM	Approved by	DM	Date							

Job Title	PROPOSED HONG KONG OFFSHORE WINDFARM IN SOUTHEASTERN WATERS ENVIRONMENTAL IMPACT ASSESSMENT
Drawing Title	STUDY ON THE SOUTH EAST NEW TERRITORIES DEVELOPMENT STRATEGY REVIEW - LANDSCAPE AND CONSERVATION FRAMEWORK (3MW LAYOUT)

Drawing No.	FIGURE 10.1a
Scale	AS SHOWN

Job. No. WPL1 (ADD 2)  
Planning, Urban Design, Landscape, Golf & Environmental Consultants  
Urbis Limited, 11/F Siu On Centre, 188 Lockhart Road, Wan Chai, Hong Kong, Tel 2802 3333 Fax 2802 8662