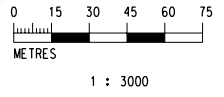


LEGEND:

- CONSTRUCTION WORKS SITES BOUNDARY
- PROPOSED SELECTED ALIGNMENT
- UNDERGROUND FACILITIES
- HAUL ROAD WITHIN CONSTRUCTION SITES
- CUT AND COVER CONSTRUCTION AREA
- STOCKPILE AREA
- AIR SENSITIVE RECEIVER



PLOT DRY: R:\us\msh\mtr\p\0\DRIVER\WINDOWS_X3_C0C0UR.dgn 2009-5-7 16:27:47
 MODELNAME: C:\WINDOWS\system32\cmd.exe /c cd /d R:\us\msh\mtr\p\0\DRIVER\WINDOWS_X3_C0C0UR.dgn
 FILENAME: R:\us\msh\mtr\p\0\DRIVER\WINDOWS_X3_C0C0UR.dgn

REV	DESCRIPTION	BY	DATE	APPROVED	REV	DESCRIPTION	BY	DATE	APPROVED

DRAWN: GXH DESIGNED: TWF CHECKED: KCC APPROVED: PL DATE: 19/AUG./2008 <small>DO NOT SCALE DRAWINGS. ALL DIMENSIONS SHALL BE VERIFIED ON SITE. © MTR CORPORATION LIMITED 2008. COPYRIGHT IN RESPECT OF THIS DRAWING / DOCUMENT IS OWNED BY THE MTR CORPORATION LIMITED OF HONG KONG. NO REPRODUCTION OF THE DRAWING / DOCUMENT OR ANY PART BY WHATEVER MEANS IS PERMITTED WITHOUT THE PRIOR WRITTEN CONSENT OF THE MTR CORPORATION LIMITED.</small>	 EXPRESS RAIL LINK ORIGINATOR CADD REF.: NOL_ERL_300_C_XRL_ENS_M60_022B.dgn
--	---

TITLE	NOL / ERL-300 ENVIRONMENTAL IMPACT ASSESSMENT LOCATIONS OF AIR SENSITIVE RECEIVERS AND DUST EMISSION SOURCES		
SCALE	FIGURE NO.	REV.	
1 : 3000 (A3)	NOL/ERL/300/C/XRL/ENS/M60/022	B	