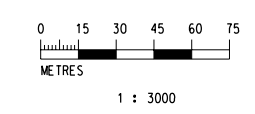


PLOT DRW: R:\us\mst\mtr\p1\01\DRIVER\WINDOWS_X3_C0C0UR.dwg
 MODELNAME: M60_028B.dgn
 FILENAME: M60_028B.dgn
 DATE: 2009-5-13 10:07:02
 PRINTED BY: MANSUET
 PLOT DRW: R:\us\mst\mtr\p1\01\DRIVER\WINDOWS_X3_C0C0UR.dwg

LEGEND:

- CONSTRUCTION WORKS SITES BOUNDARY
- PROPOSED SELECTED ALIGNMENT
- UNDERGROUND FACILITIES
- HAUL ROAD WITHIN CONSTRUCTION SITES
- CUT AND COVER CONSTRUCTION AREA
- STOCKPILE AREA
- AIR SENSITIVE RECEIVER



REV	DESCRIPTION	BY	DATE	APPROVED	REV	DESCRIPTION	BY	DATE	APPROVED

DRAWN	GXH
DESIGNED	TWF
CHECKED	KCC
APPROVED	PL
DATE	19/AUG./2008

EXPRESS RAIL LINK

ORIGINATOR

ENSR | AECOM

DO NOT SCALE DRAWINGS. ALL DIMENSIONS SHALL BE VERIFIED ON SITE.
 © MTR CORPORATION LIMITED 2008. COPYRIGHT IN RESPECT OF THIS DRAWING / DOCUMENT IS OWNED BY THE MTR CORPORATION LIMITED OF HONG KONG. NO REPRODUCTION OF THE DRAWING / DOCUMENT OR ANY PART BY WHATEVER MEANS IS PERMITTED WITHOUT THE PRIOR WRITTEN CONSENT OF THE MTR CORPORATION LIMITED.

CADD REF. NOL_ERL_300_C_XRL_ENS_M60_028B.dgn

TITLE

**NOL / ERL-300
ENVIRONMENTAL IMPACT ASSESSMENT
LOCATIONS OF AIR SENSITIVE RECEIVERS
AND DUST EMISSION SOURCES**

SCALE 1 : 3000 (A3) FIGURE NO. NOL/ERL/300/C/XRL/ENS/M60/028 REV. B