

Hong Kong Section of Guangzhou–Shenzhen–Hong Kong Express Rail Link (XRL) Environmental Impact Assessment Study
 Surface water Temperature Elevation Three Hours before (-3 hr) High Water (above)
 and at High Water (below) of a Neap Tide under Dry Season

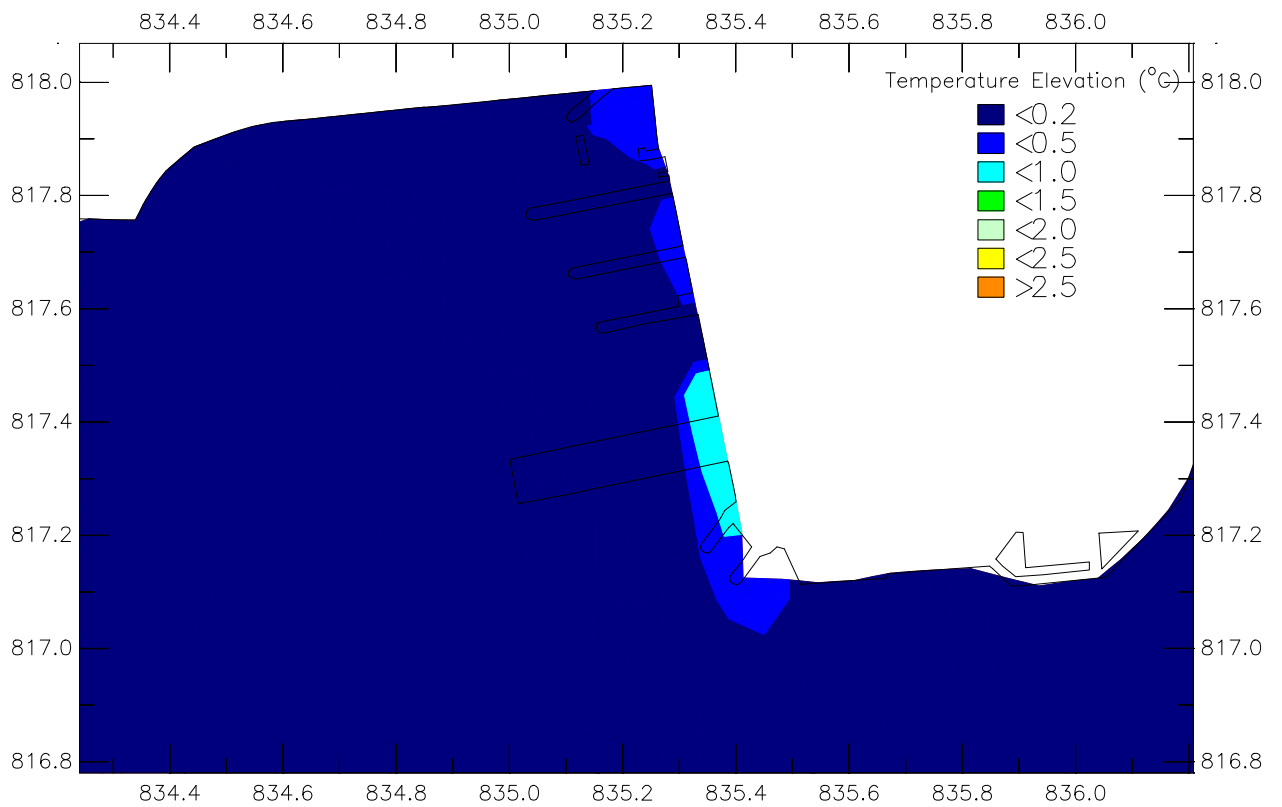
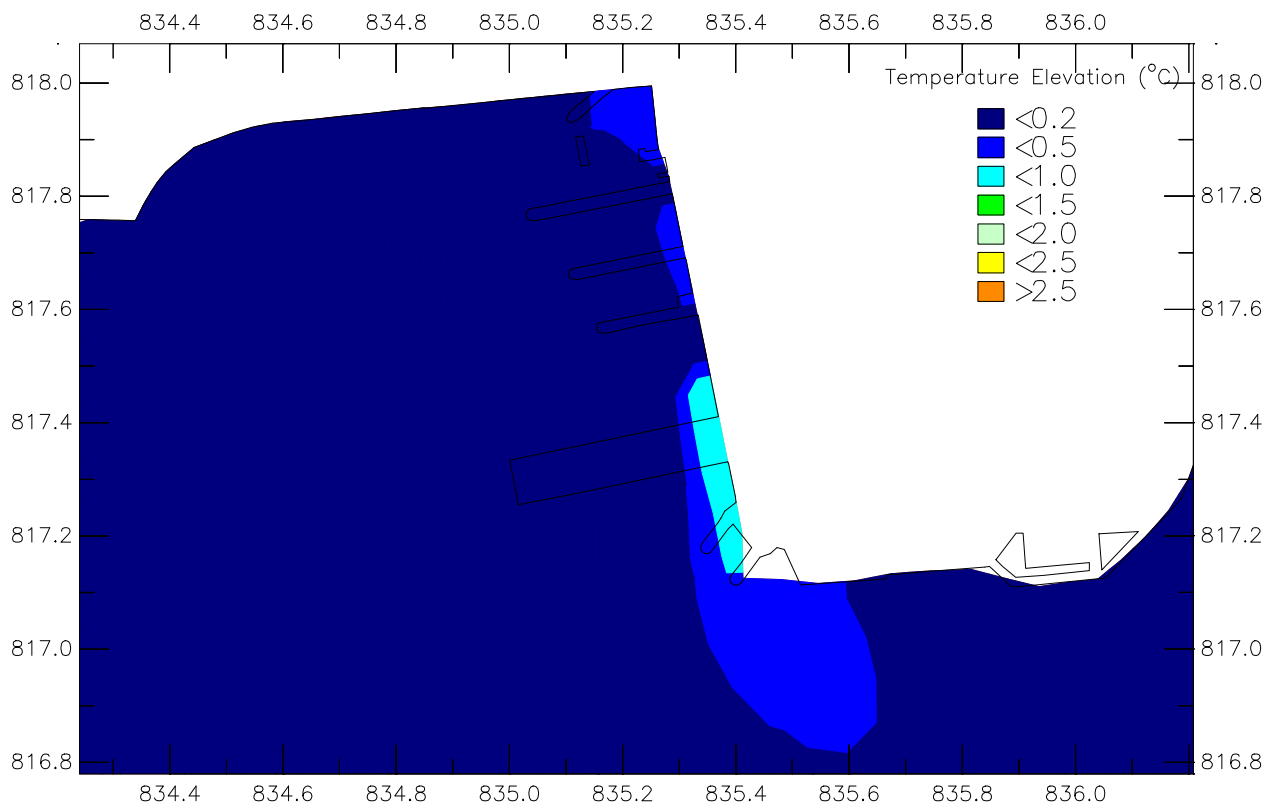
Dry

Jan 2009

ENSR Asia (HK) Ltd.

60046742/GPP

Drytemp.ssn



Hong Kong Section of Guangzhou–Shenzhen–Hong Kong Express Rail Link (XRL) Environmental Impact Assessment Study
 Surface water Temperature Elevation Three Hours after (+3 hr) High Water (above) and
 Three Hours before (-3 hr) Low Water (below) of a Neap Tide under Dry Season

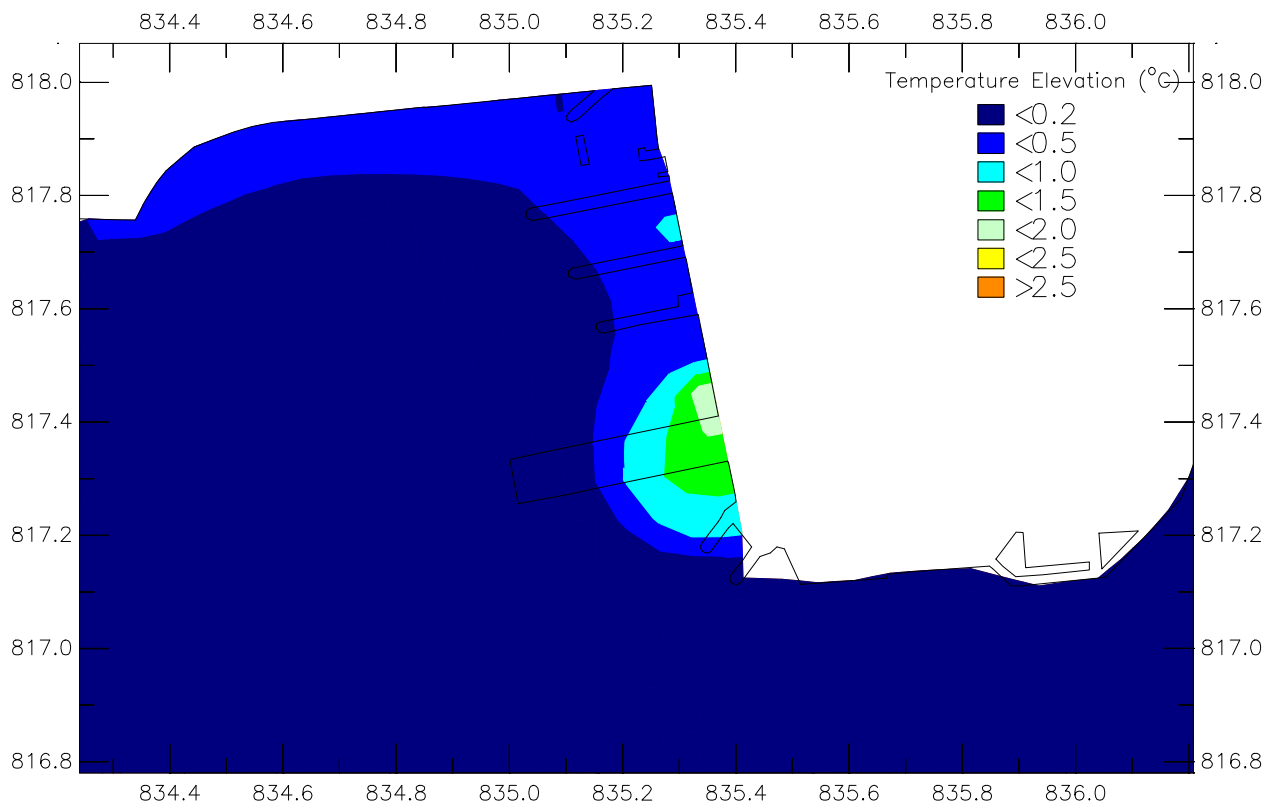
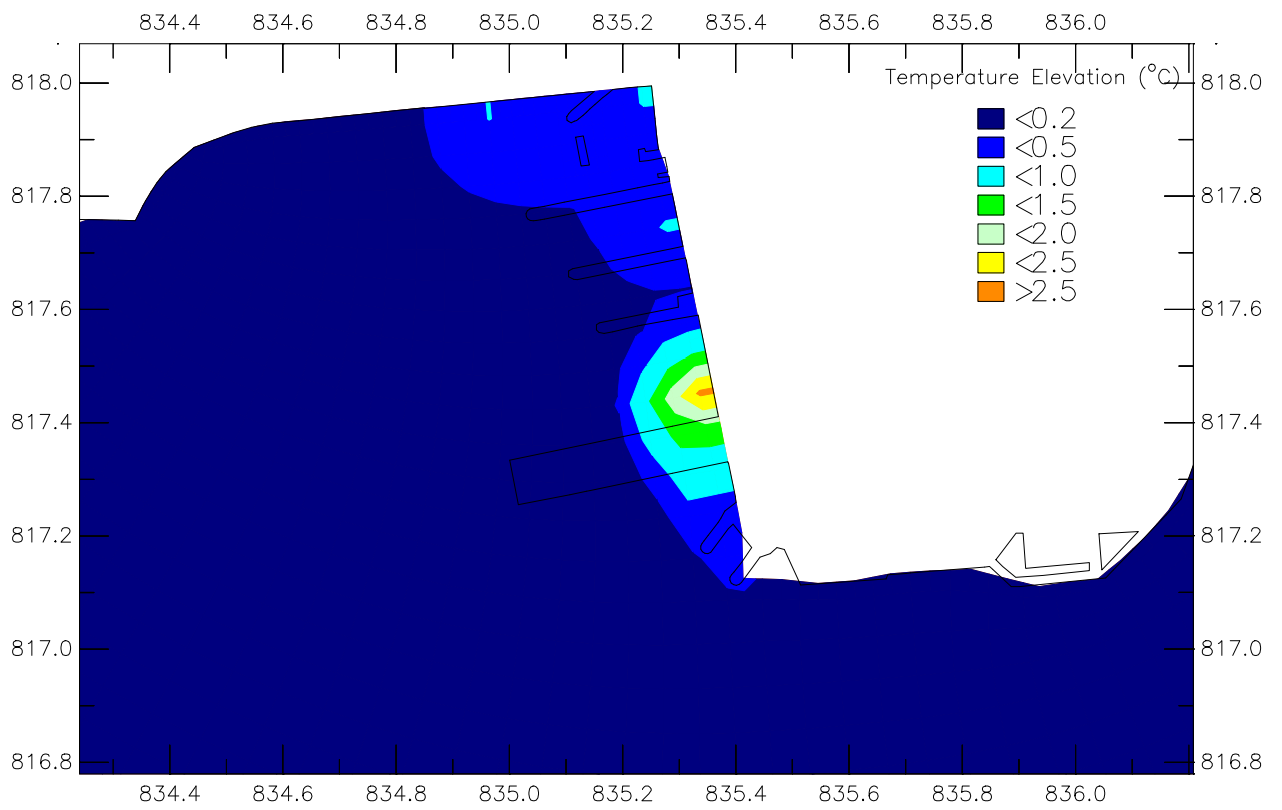
Dry

Jan 2009

ENSR Asia (HK) Ltd.

60046742/GPP

Drytemp.ssn



Hong Kong Section of Guangzhou–Shenzhen–Hong Kong Express Rail Link (XRL) Environmental Impact Assessment Study
 Surface water Temperature Elevation at Low Water (above) and Three Hours after (+3 hr)
 Low Water (below) of a Neap Tide under Dry Season

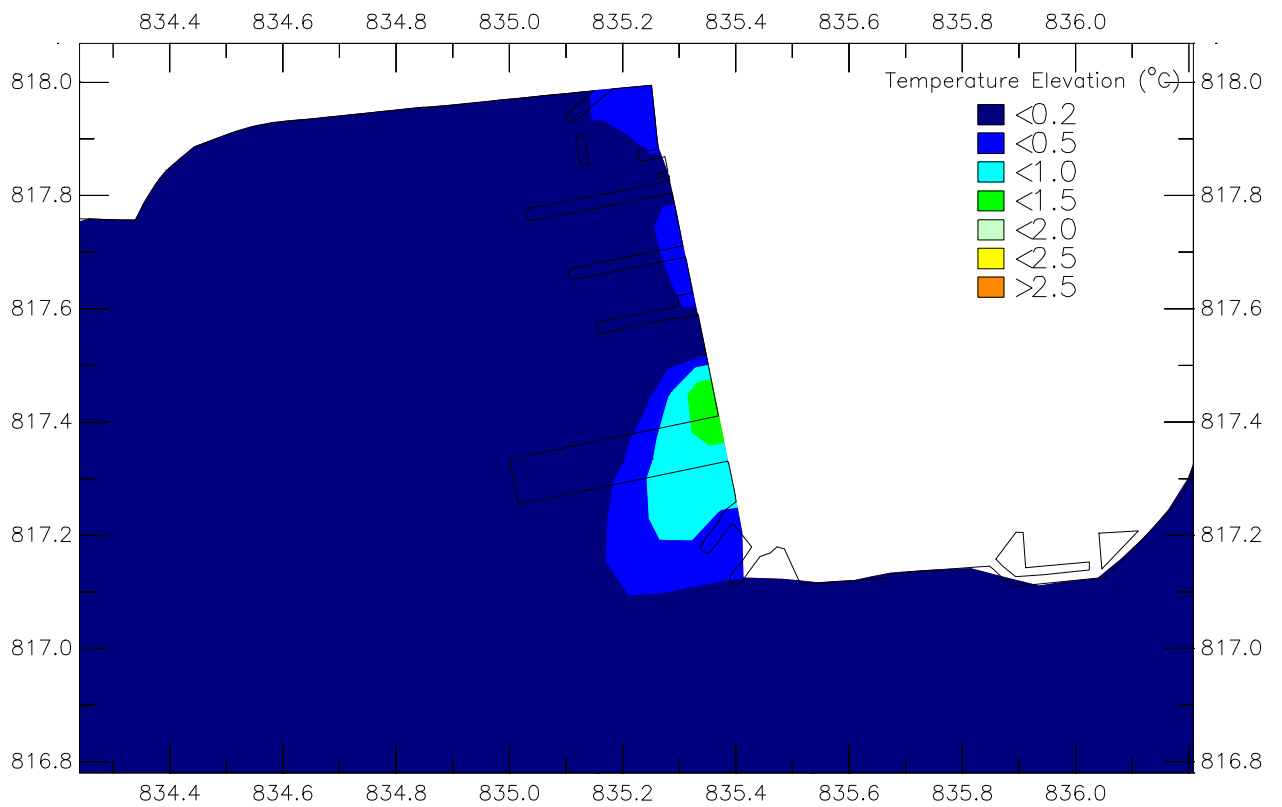
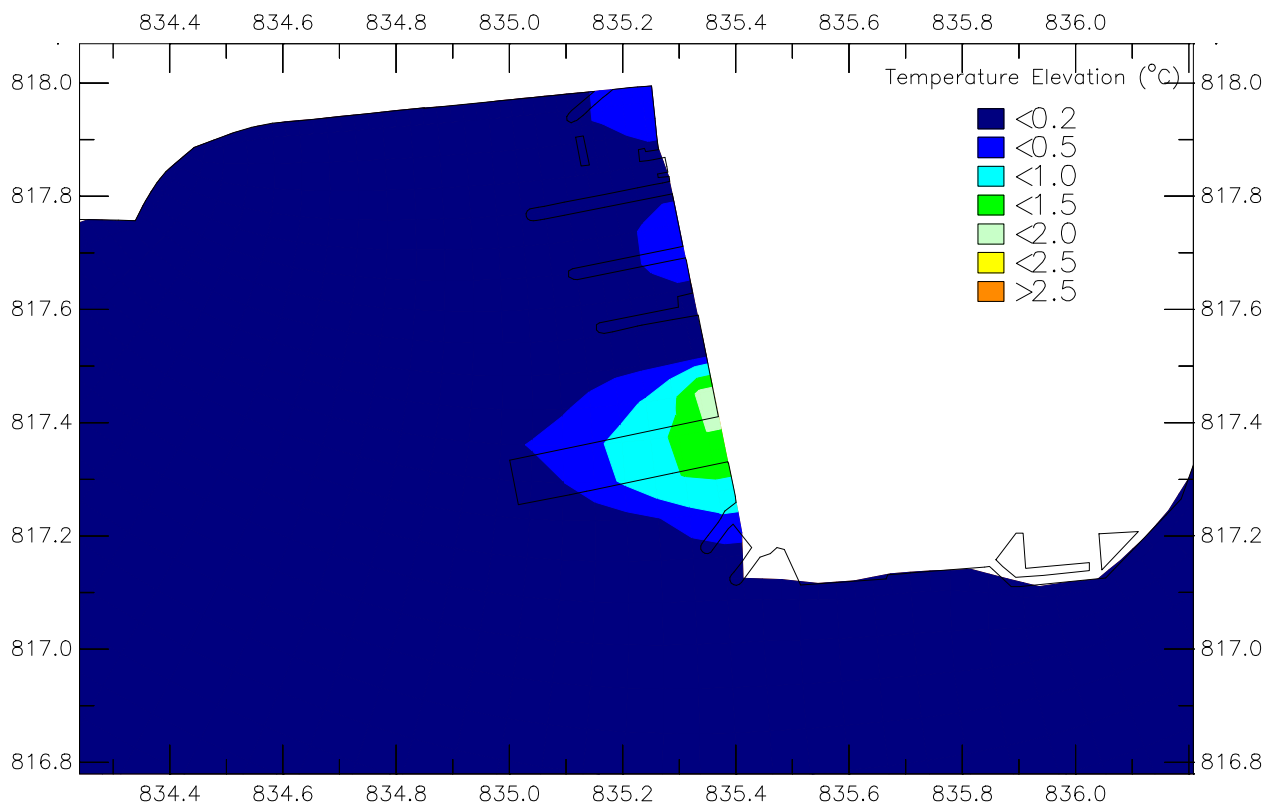
Dry

Jan 2009

ENSR Asia (HK) Ltd.

60046742/GPP

Drytemp.ssn



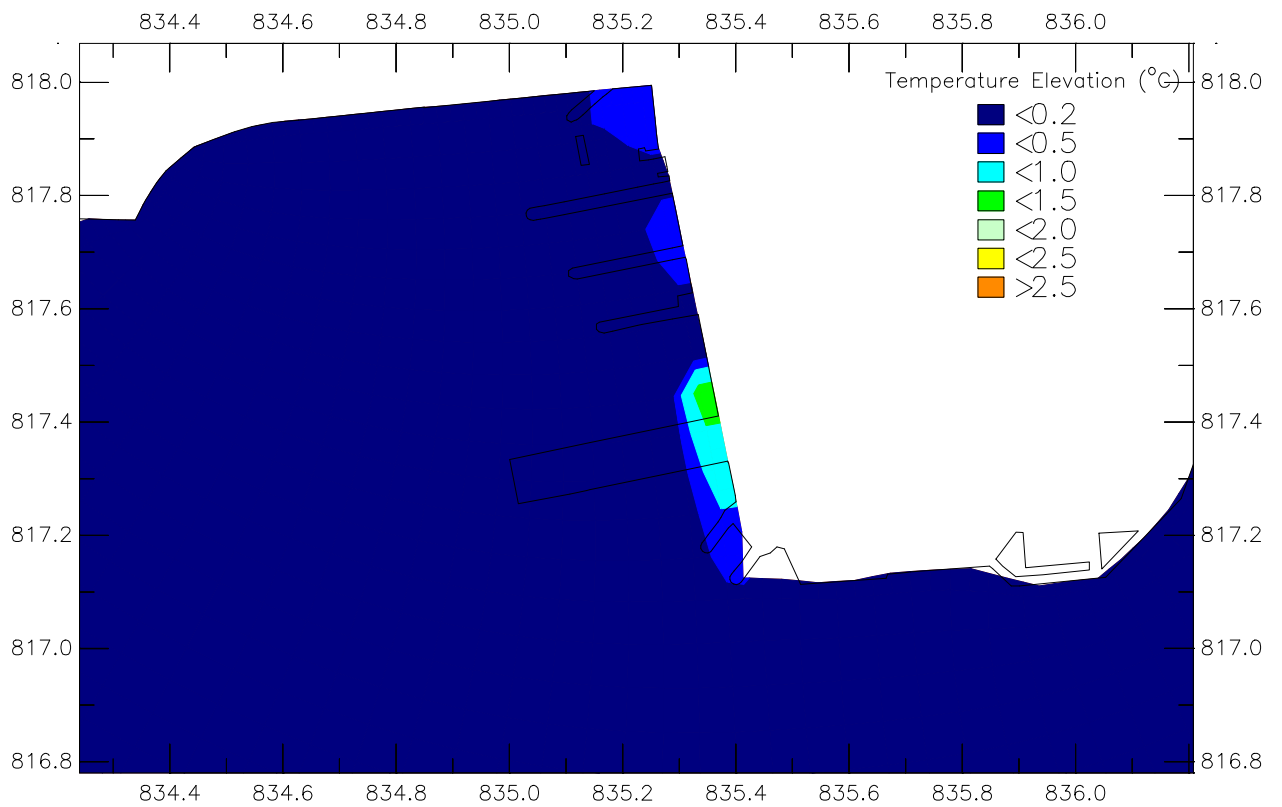
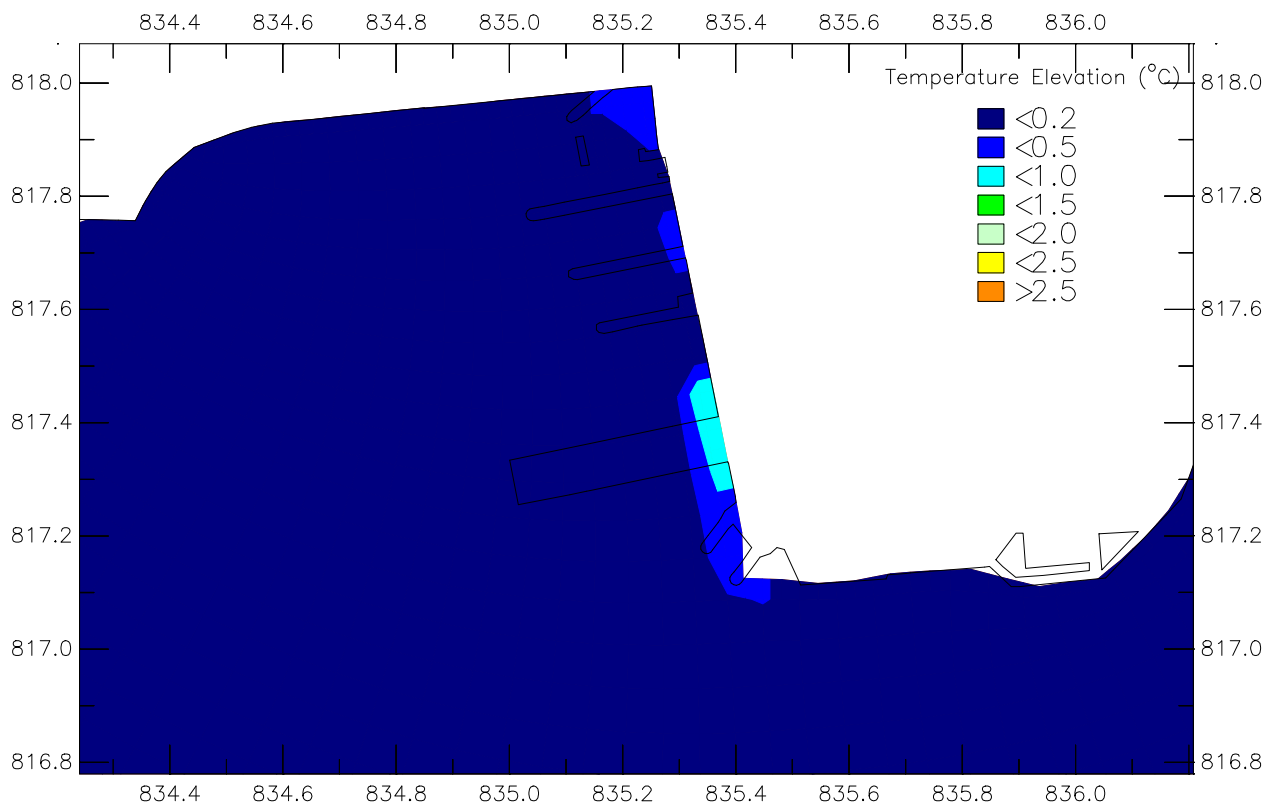
Hong Kong Section of Guangzhou–Shenzhen–Hong Kong Express Rail Link (XRL) Environmental Impact Assessment Study
 Surface water Temperature Elevation Three Hours before (–3 hr) High Water (above)
 and at High Water (below) of a Spring Tide under Dry Season

Dry

Jan 2009

ENSR Asia (HK) Ltd.

60046742/GPP Drytemp.ssn



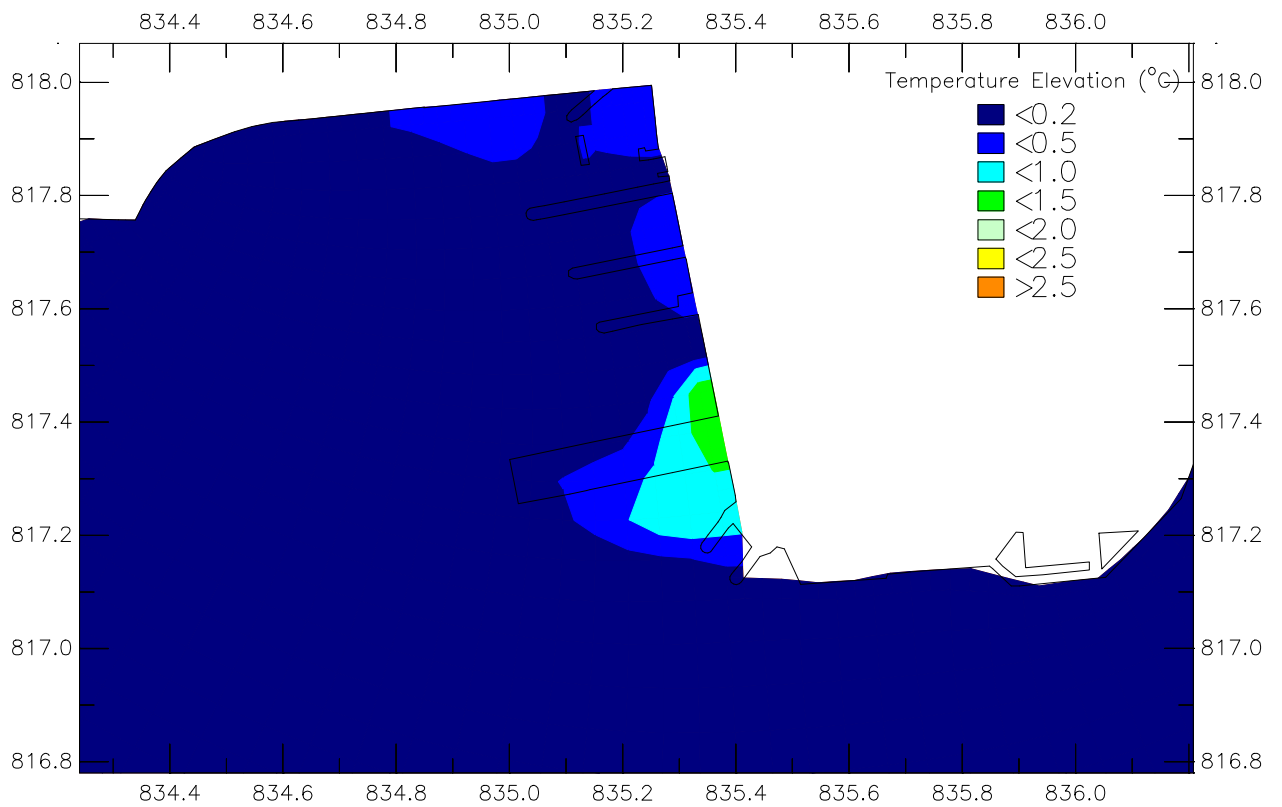
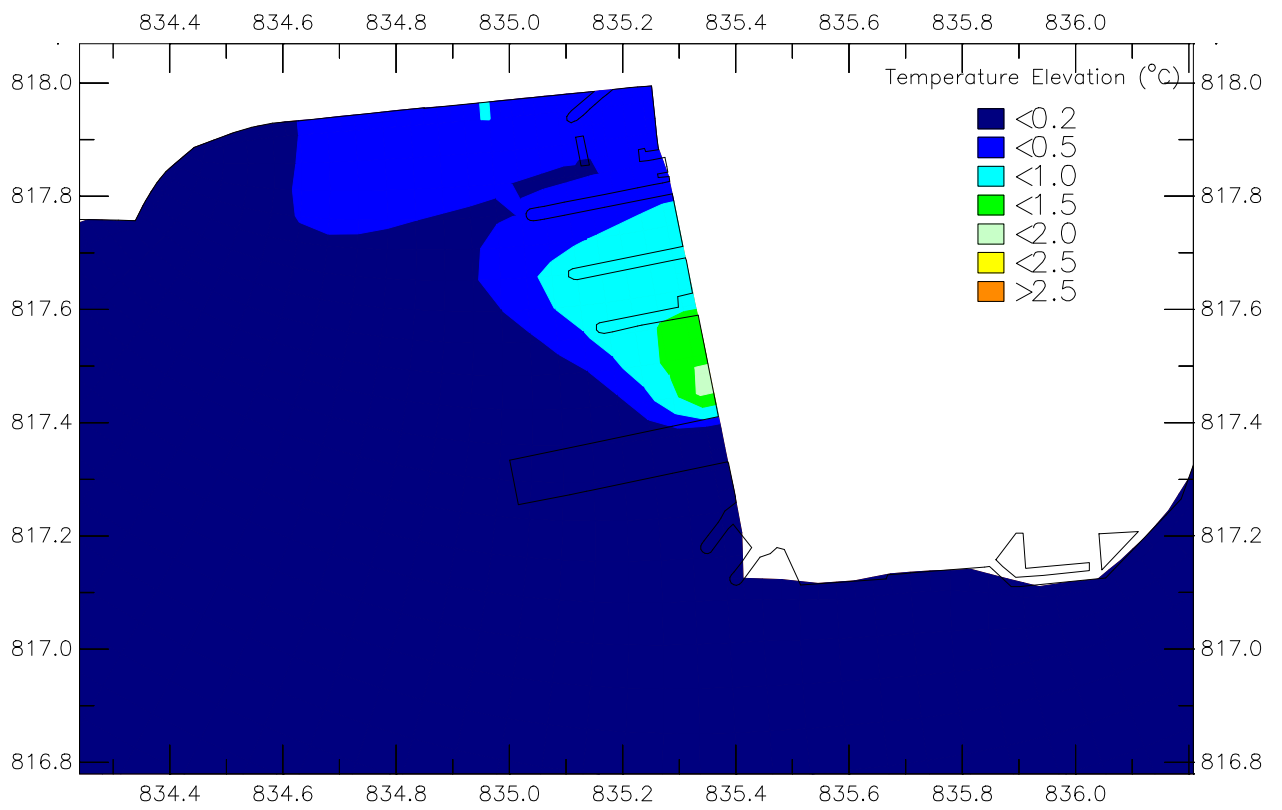
Hong Kong Section of Guangzhou–Shenzhen–Hong Kong Express Rail Link (XRL) Environmental Impact Assessment Study
 Surface water Temperature Elevation Three Hours after (+3 hr) High Water (above) and
 Three Hours before (-3 hr) Low Water (below) of a Spring Tide under Dry Season

Dry

Jan 2009

ENSR Asia (HK) Ltd.

60046742/GPP Drytemp.ssn



Hong Kong Section of Guangzhou–Shenzhen–Hong Kong Express Rail Link (XRL) Environmental Impact Assessment Study
 Surface water Temperature Elevation at Low Water (above) and Three Hours after (+3 hr)
 Low Water (below) of a Spring Tide under Dry Season

Dry

Jan 2009

ENSR Asia (HK) Ltd.

60046742/GPP

Drytemp.ssn