

Hong Kong Section of Guangzhou–Shenzhen–Hong Kong Express Rail Link (XRL) Environmental Impact Assessment Study  
 Surface water Temperature Elevation Three Hours before (-3 hr) High Water (above)  
 and at High Water (below) of a Neap Tide under Wet Season

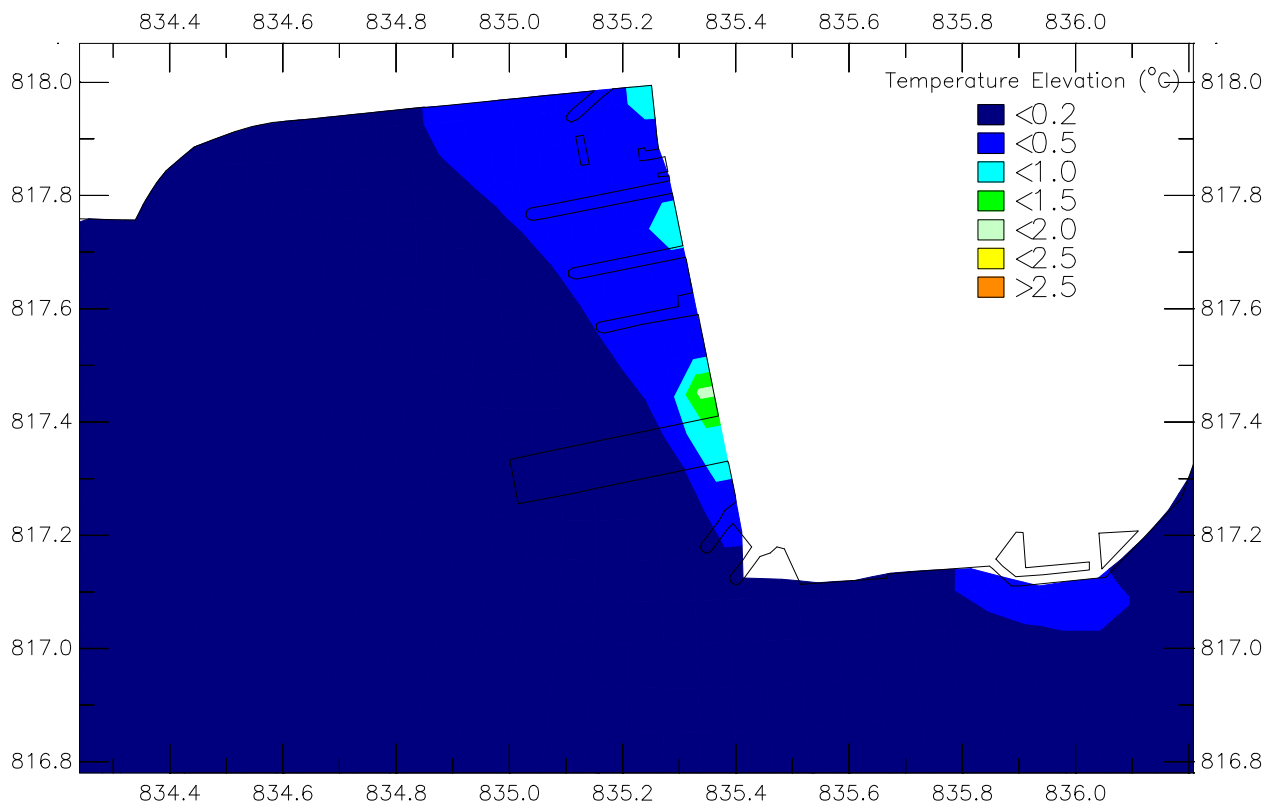
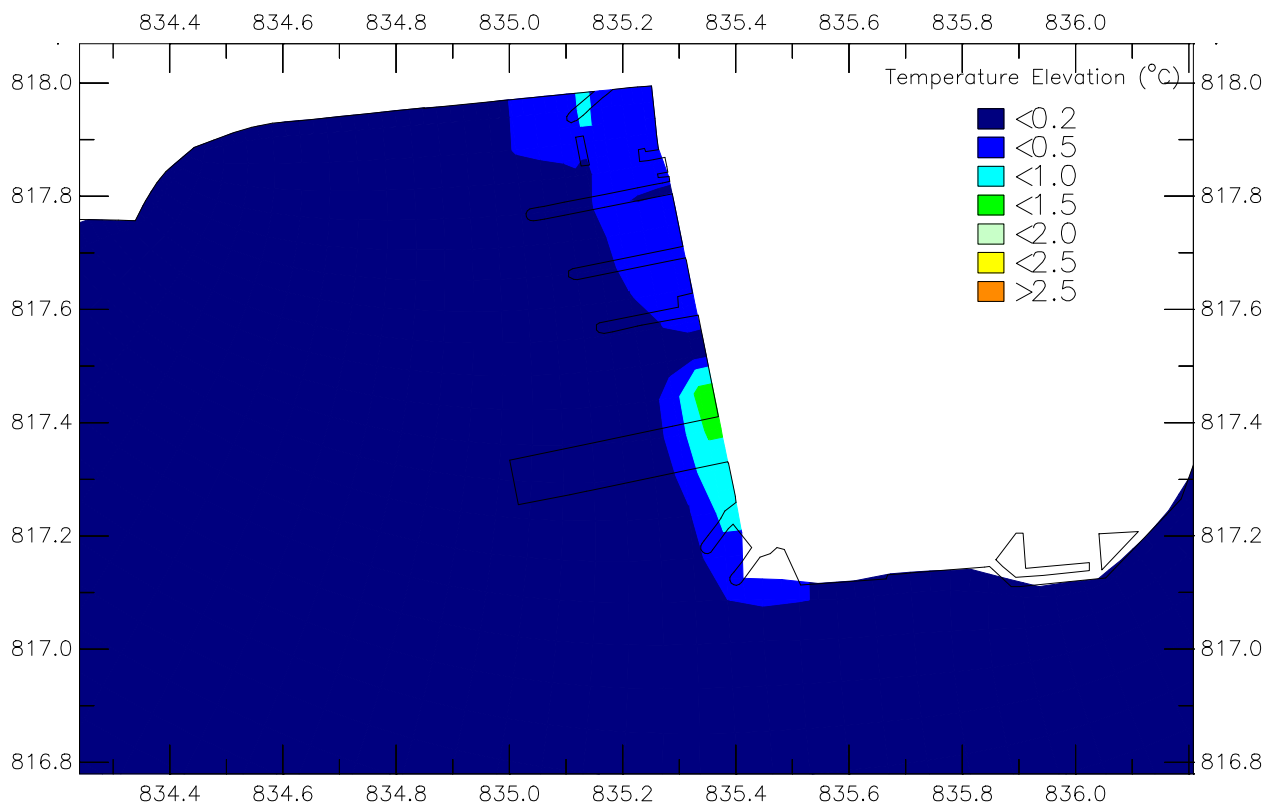
Wet

Jan 2009

ENSR Asia (HK) Ltd.

60046742/GPP

Wettemp.ssn



Hong Kong Section of Guangzhou–Shenzhen–Hong Kong Express Rail Link (XRL) Environmental Impact Assessment Study  
 Surface water Temperature Elevation Three Hours after (+3 hr) High Water (above) and  
 Three Hours before (-3 hr) Low Water (below) of a Neap Tide under Wet Season

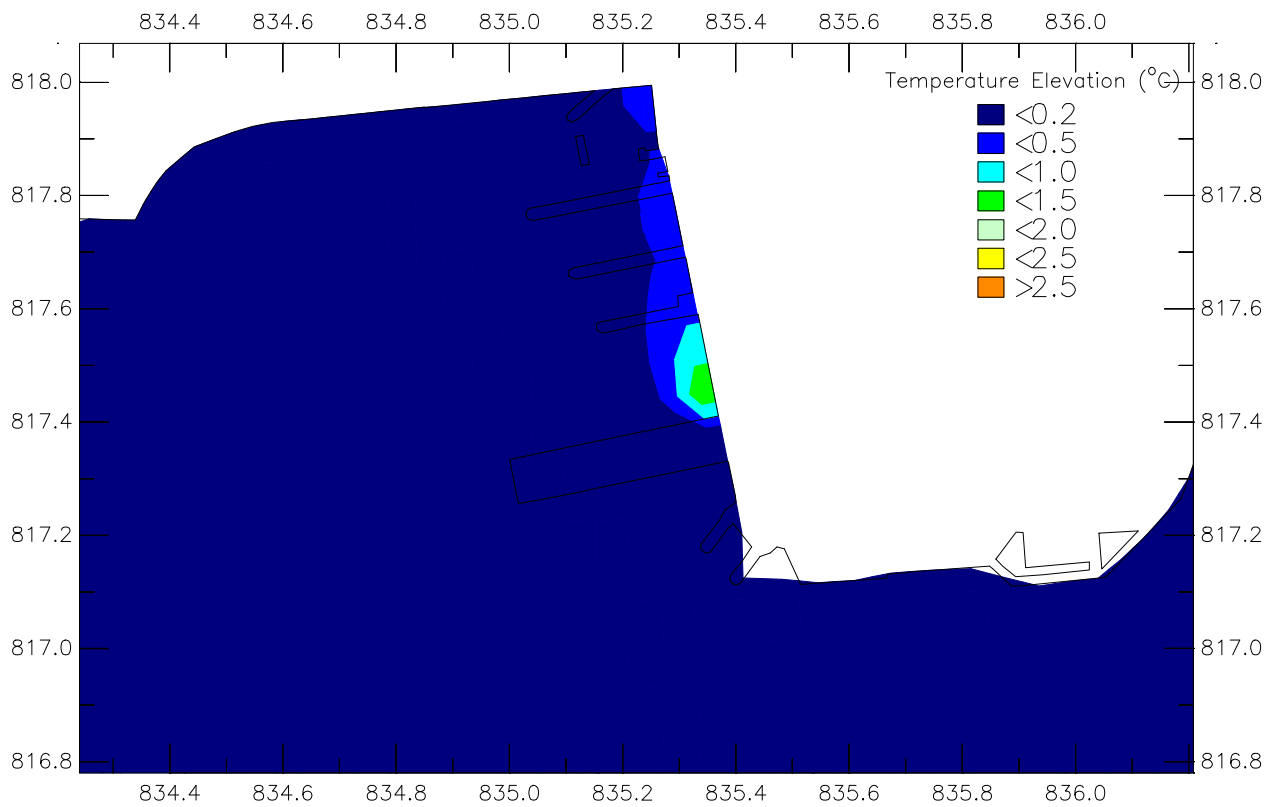
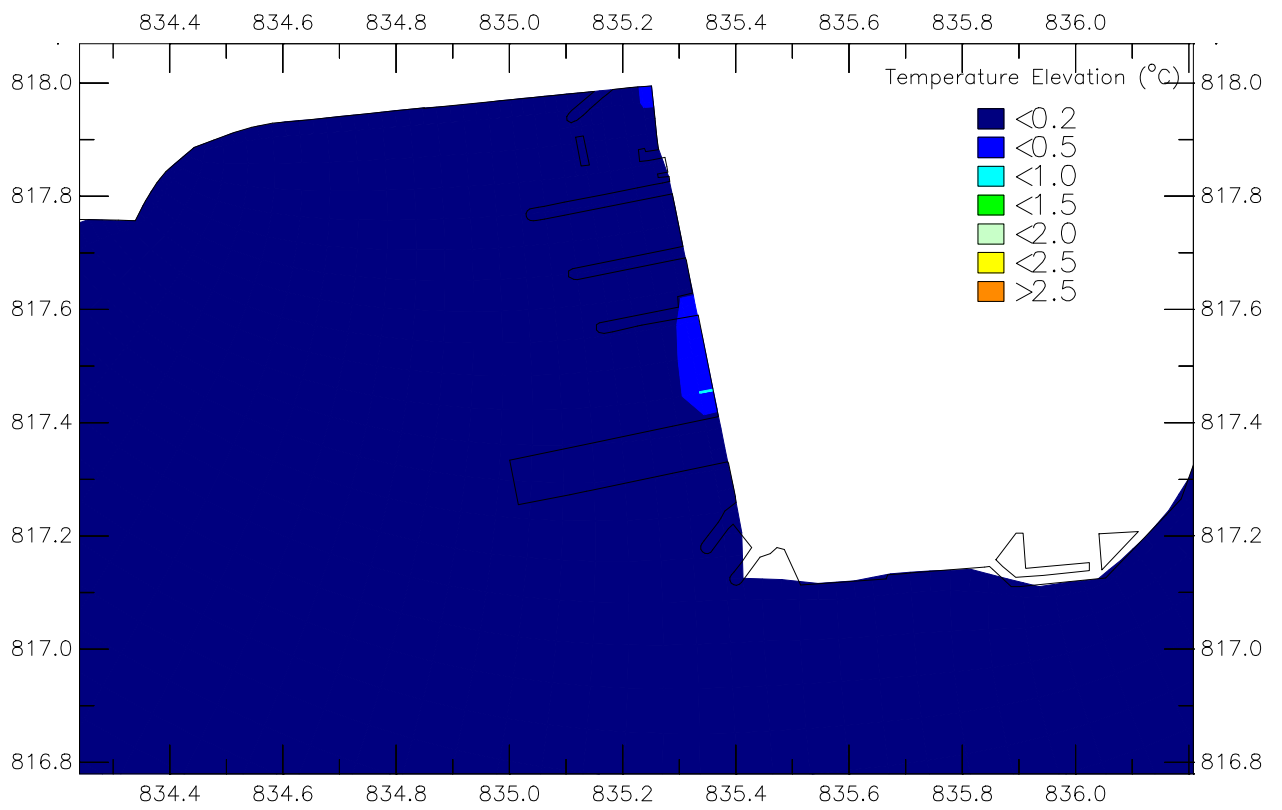
Wet

Jan 2009

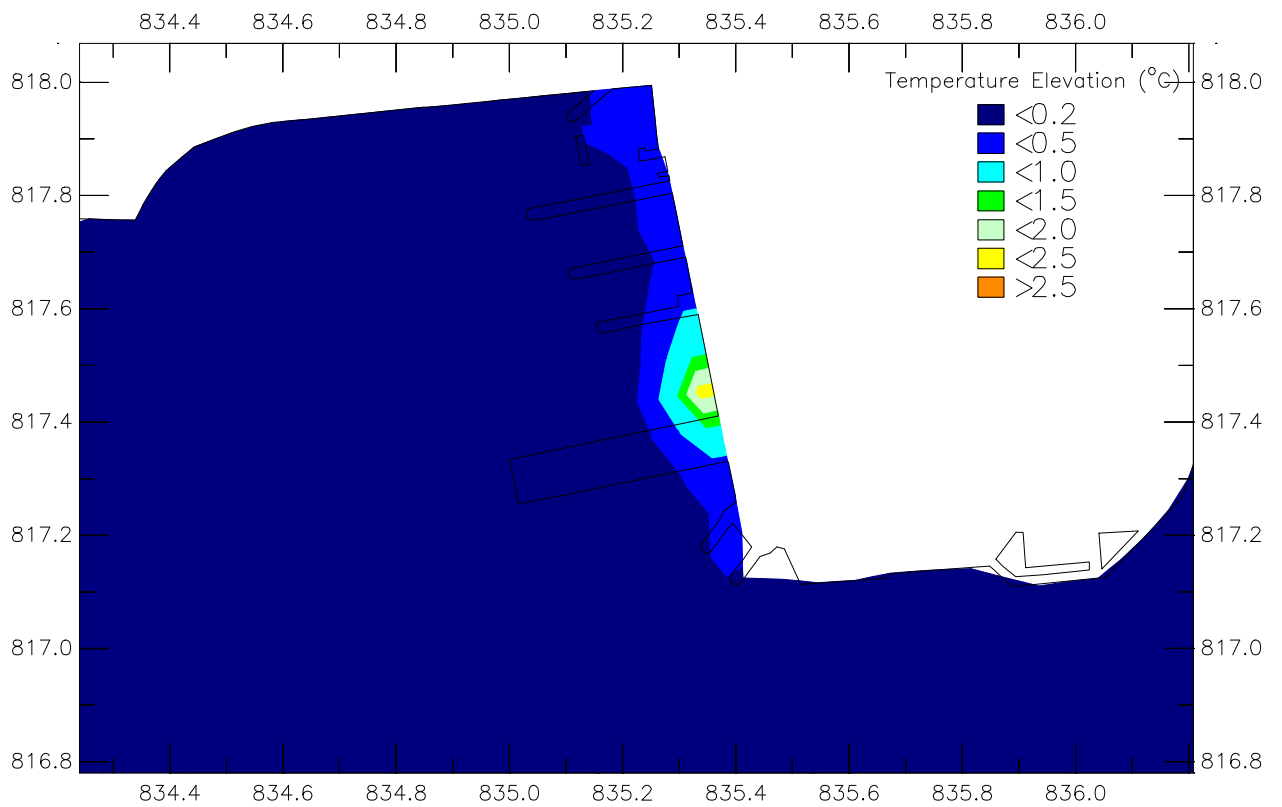
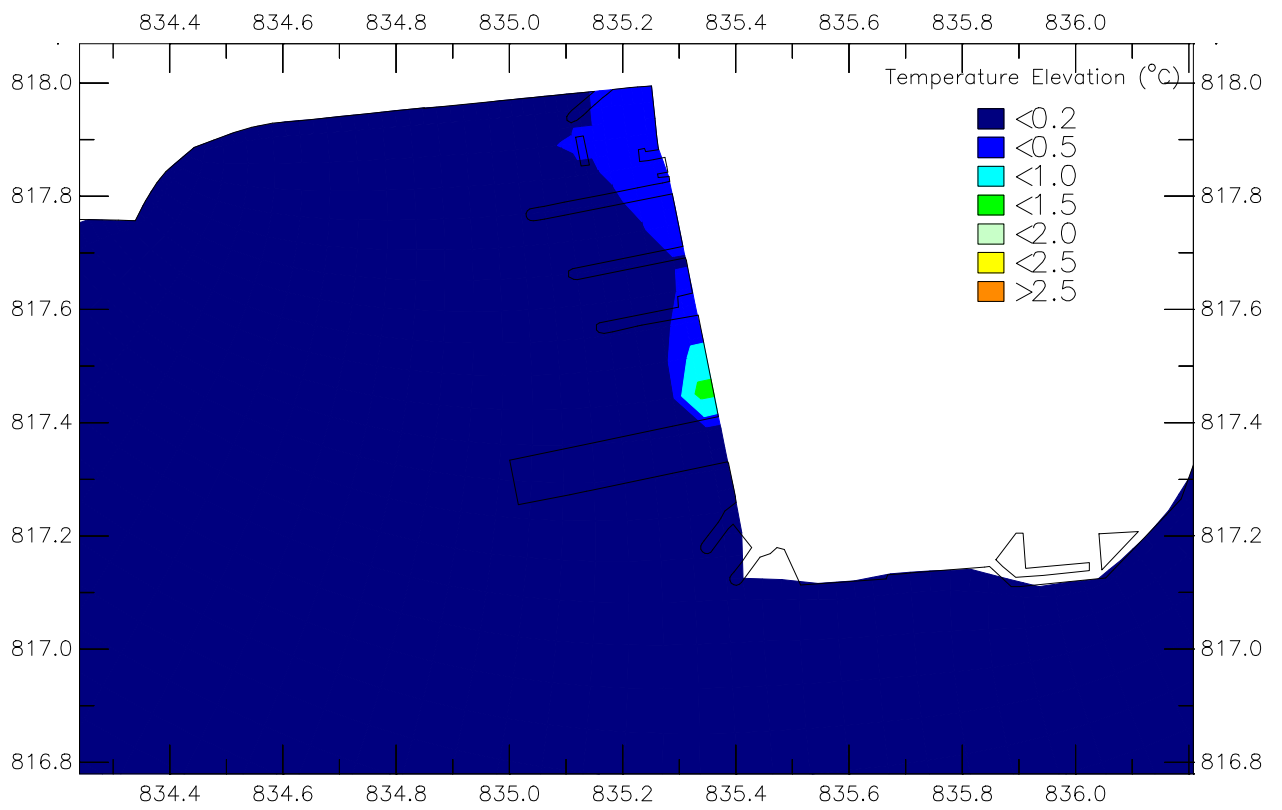
ENSR Asia (HK) Ltd.

60046742/GPP

Wettemp.ssn



Hong Kong Section of Guangzhou–Shenzhen–Hong Kong Express Rail Link (XRL) Environmental Impact Assessment Study Surface water Temperature Elevation at Low Water (above) and Three Hours after (+3 hr)	Wet	Jan 2009
Low Water (below) of a Neap Tide under Wet Season		
ENSR Asia (HK) Ltd.	60046742/GPP	Wettemp.ssn



Hong Kong Section of Guangzhou–Shenzhen–Hong Kong Express Rail Link (XRL) Environmental Impact Assessment Study  
 Surface water Temperature Elevation Three Hours before (–3 hr) High Water (above)  
 and at High Water (below) of a Spring Tide under Wet Season

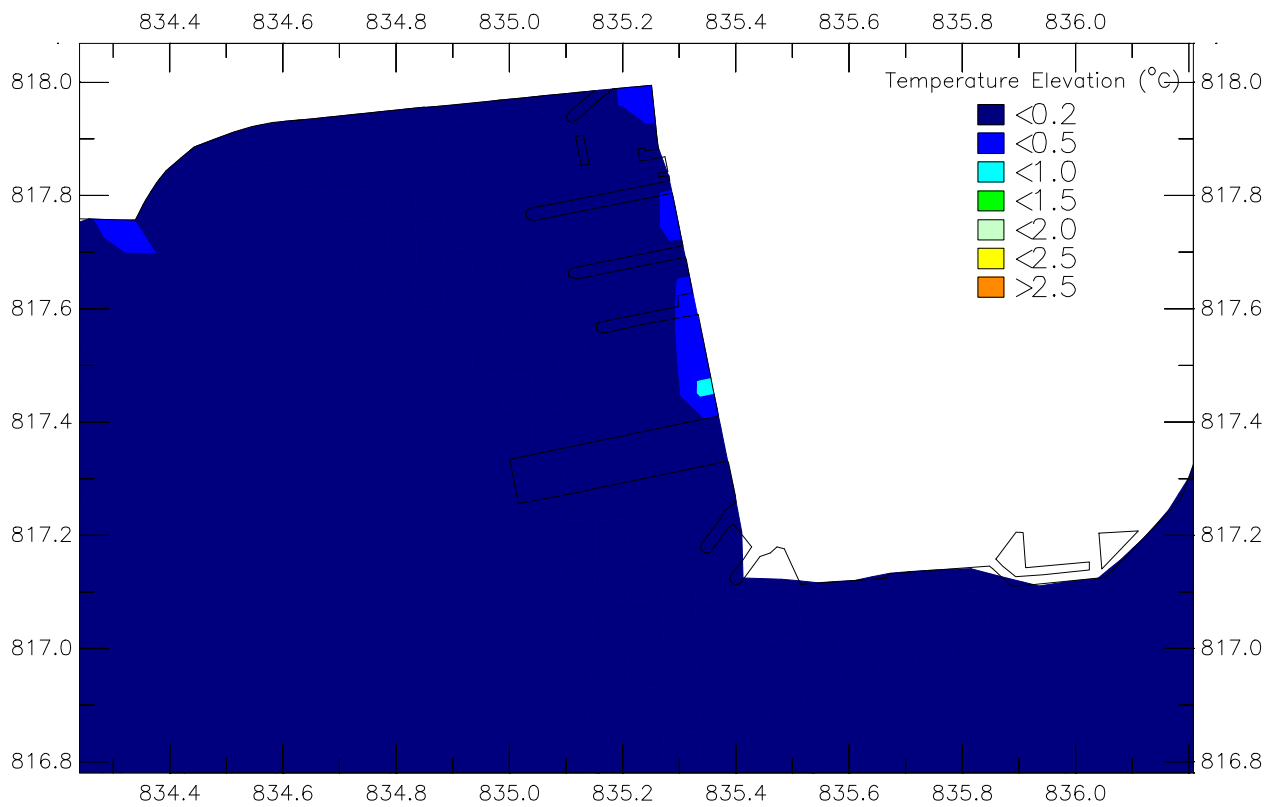
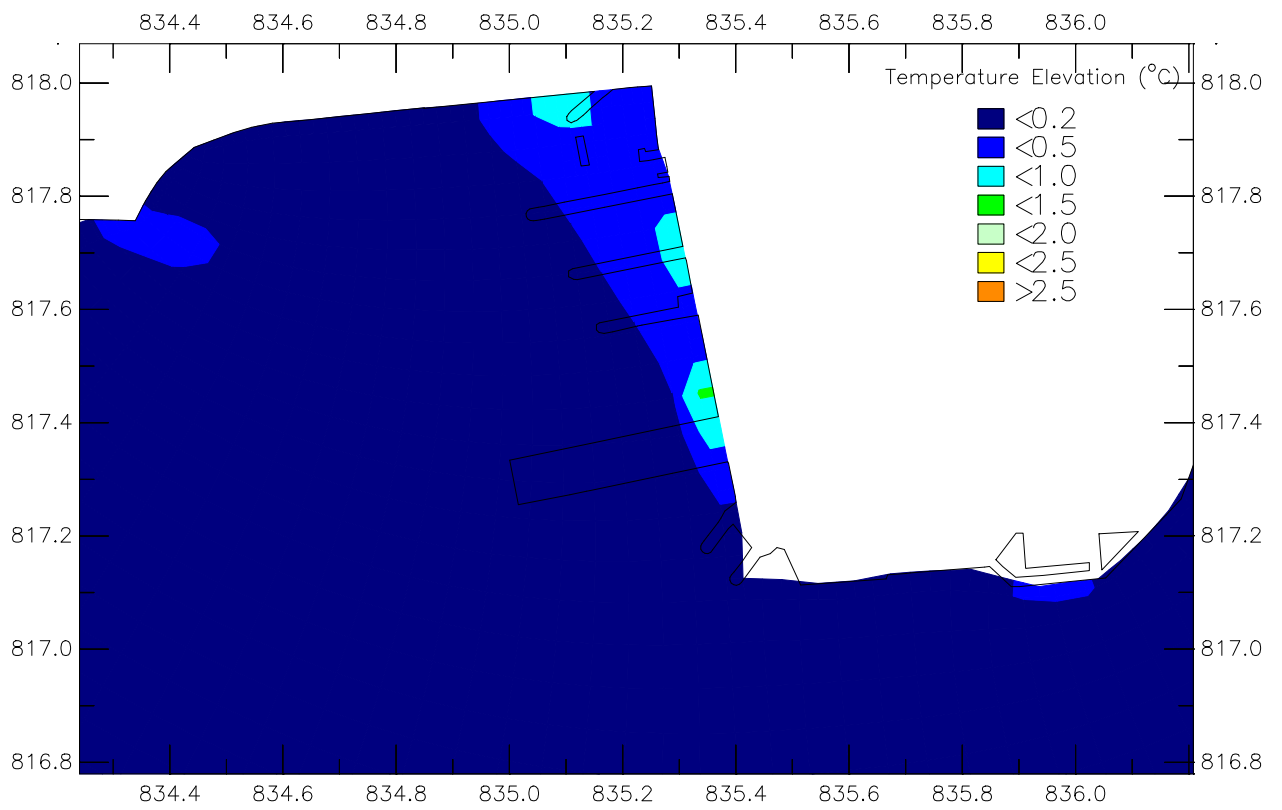
Wet

Jan 2009

ENSR Asia (HK) Ltd.

60046742/GPP

Wettemp.ssn



Hong Kong Section of Guangzhou–Shenzhen–Hong Kong Express Rail Link (XRL) Environmental Impact Assessment Study  
 Surface water Temperature Elevation Three Hours after (+3 hr) High Water (above) and  
 Three Hours before (-3 hr) Low Water (below) of a Spring Tide under Wet Season

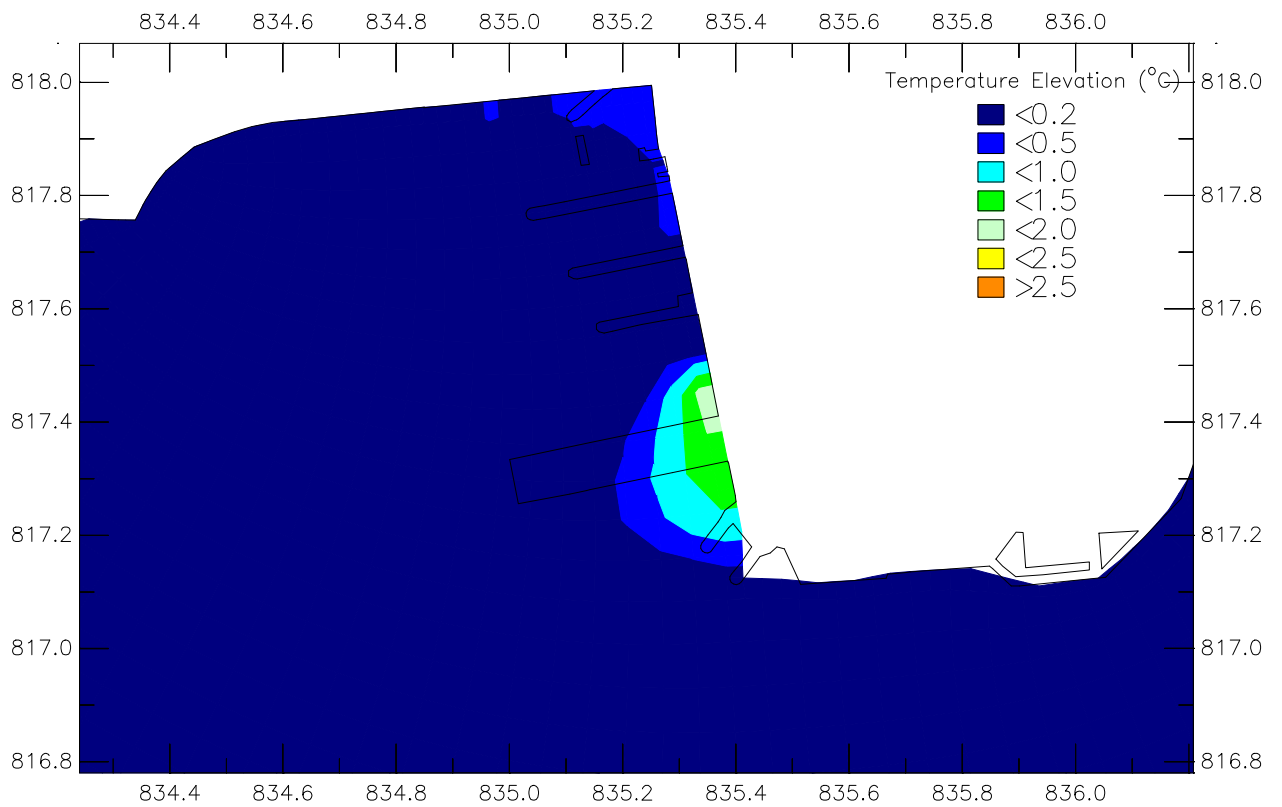
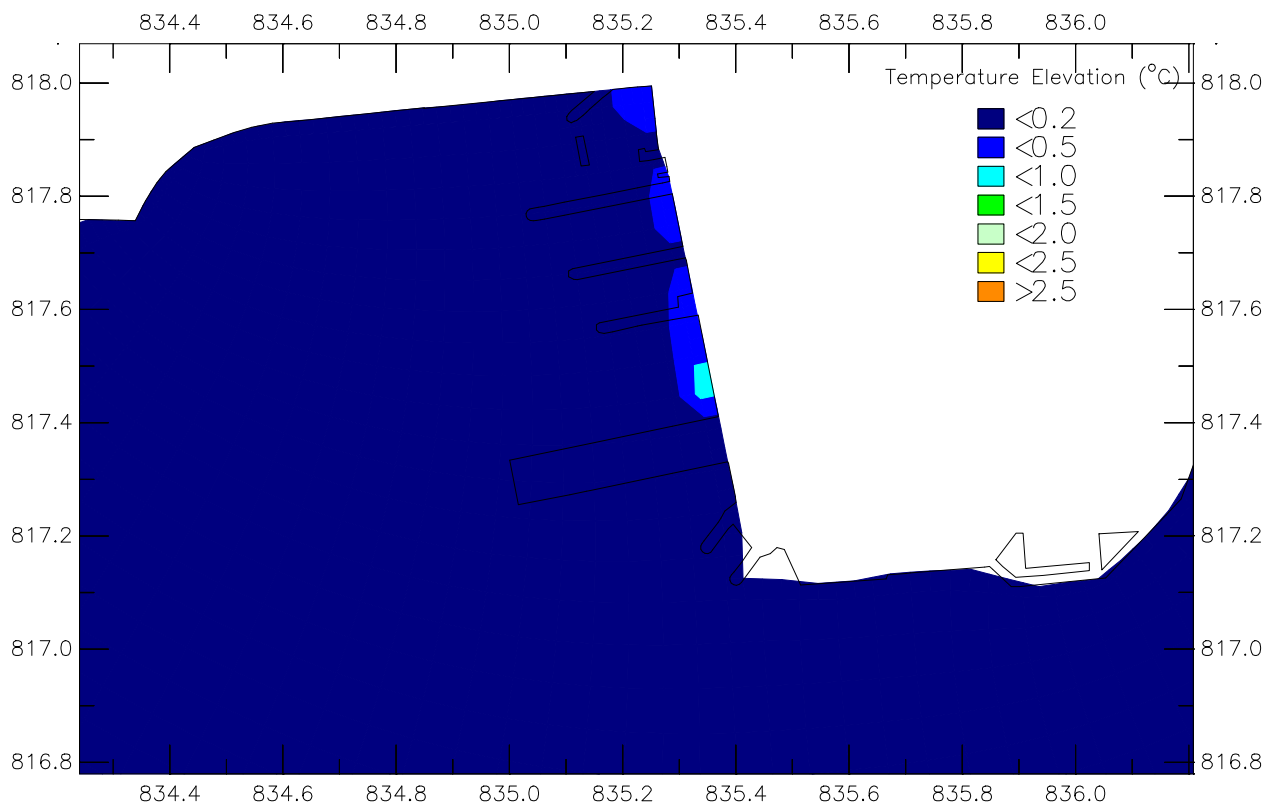
Wet

Jan 2009

ENSR Asia (HK) Ltd.

60046742/GPP

Wettemp.ssn



Hong Kong Section of Guangzhou–Shenzhen–Hong Kong Express Rail Link (XRL) Environmental Impact Assessment Study  
 Surface water Temperature Elevation at Low Water (above) and Three Hours after (+3 hr)  
 Low Water (below) of a Spring Tide under Wet Season

Wet

Jan 2009

ENSR Asia (HK) Ltd.

60046742/GPP

Wettemp.ssn