

**Appendix 5.6**  
**Daytime Fixed Plant Noise Impact Assessment**

NSR No.	Description	Plant item	Direction Facing	Distance , m	SWL, dB(A)	Correction for line of sight <sup>(1)</sup> , dB(A)	SPL, dB(A)	Total SPL, dB(A)	Daytime Noise Criteria, dB(A)					
<b>Mai Po Ventilation Building (MPV)</b>														
MP1	House 5 Phase A Royal Palms	Ventilation Shaft	North Elevation 1	134	92	10	34							
			North Elevation 2	141	92	10	34							
			East Elevation 1	145	95	10	37							
			East Elevation 2	136	95	10	37							
			South Elevation 1	130	93	0	46							
			South Elevation 2	123	93	0	46							
			South Elevation 3	121	93	0	46							
			West Elevation 1	123	88	0	41							
			West Elevation 2	130	88	0	41							
			West Elevation 3	130	88	0	41							
MP5	Proposed Comprehensive Development at Wo Shang Wai	Ventilation Shaft	North Elevation 1	101	92	5	42	52	60					
			North Elevation 2	116	92	5	41							
			East Elevation 1	125	95	10	38							
			East Elevation 2	125	95	10	38							
			South Elevation 1	119	93	5	42							
			South Elevation 2	108	93	5	42							
			South Elevation 3	97	93	5	43							
			West Elevation 1	92	88	0	44							
			West Elevation 2	92	88	0	44							
			West Elevation 3	92	88	0	44							
MP6	Planned village house at Village Zone	Ventilation Shaft	North Elevation 1	88	92	0	48	51	51					
			North Elevation 2	73	92	0	50							
			East Elevation 1	66	95	0	54							
			East Elevation 2	68	95	0	53							
			South Elevation 1	75	93	5	46							
			South Elevation 2	86	93	5	44							
			South Elevation 3	95	93	5	43							
			West Elevation 1	99	88	10	33							
			West Elevation 2	97	88	10	33							
			West Elevation 3	97	88	10	33							
<b>Ngau Tam Mei Ventilation Building (NTV)</b>														
NT1	Yau Tam Mei Village House	Ventilation Shaft	North Elevation 1	64	84	0	43							
			North Elevation 2	64	84	0	43							
			North Elevation 3	64	83	0	42							
			North Elevation 4	70	83	0	41							
			North Elevation 5	82	83	0	40							
			East Elevation 1	85	85	10	31							
			East Elevation 2	85	85	10	31							
			East Elevation 3	85	87	10	33							
			South Elevation 1	100	84	10	29							
			South Elevation 2	100	84	10	29							
			South Elevation 3	103	85	10	30							
			South Elevation 4	12	87	10	50							
			South Elevation 5	127	87	10	30							
			West Elevation 1	100	87	10	32							
			West Elevation 2	118	87	10	31							
			West Elevation 3	130	87	10	30							
			NT4	Yau Tam Mei Village House	Ventilation Shaft	North Elevation 1	88			84	10	30	53	55
						North Elevation 2	97			84	10	29		
North Elevation 3	112	83				10	27							
North Elevation 4	130	83				10	26							
North Elevation 5	152	83				10	24							
East Elevation 1	85	85				0	41							
East Elevation 2	85	85				0	41							
East Elevation 3	85	87				0	43							
South Elevation 1	88	84				5	35							
South Elevation 2	97	84				5	34							
South Elevation 3	127	85				5	33							
South Elevation 4	152	87				5	33							
South Elevation 5	179	87				5	32							
West Elevation 1	112	87				10	31							
West Elevation 2	191	87				10	26							
West Elevation 3	194	87				10	26							
<b>ERS North End Ventilation Building (ENV)</b>														
SS6	32 Leung Uk Tsuen	Ventilation Shaft				North Elevation	184	93	10	33				
			East Elevation	173	92	0	42							
			South Elevation	179	95	0	45							
			West Elevation	191	95	10	34							
SS7	Leung Uk Tsuen	Ventilation Shaft	North Elevation	122	93	0	46	47	52					
			East Elevation	121	92	0	45							
			South Elevation	128	95	10	38							
			West Elevation	131	95	10	38							
SS10	DD110 LOT 482, Wang Toi Shan Choi Yuen Tsuen	Ventilation Shaft	North Elevation	207	93	0	42	49	49					
			East Elevation	211	92	5	36							
			South Elevation	212	95	10	33							
			West Elevation	209	95	5	39							
SS12	No. 265 Kam Tai Road	Ventilation Shaft	North Elevation	257	93	0	40	44	49					
			East Elevation	265	92	10	29							
			South Elevation	263	95	10	32							
			West Elevation	256	95	5	37							
SS15	Abandoned Shek Kong village house	Ventilation Shaft	North Elevation	174	93	10	33	42	49					
			East Elevation	168	92	5	37							
			South Elevation	169	95	0	45							
			West Elevation	176	95	10	35							
<b>ERS South End Ventilation Building (ESV)</b>														
SS2	Nam Hing Lei	Ventilation Shaft	North Elevation	440	98	10	30							
			East Elevation	441	100	10	32							
			South Elevation	435	99	0	41							
SS4	Leung Uk Tsuen Village House	Ventilation Shaft	West Elevation	435	99	5	36	43	49					
			North Elevation	365	98	10	32							
			East Elevation	360	100	5	39							
			South Elevation	359	99	0	43							
SS5	51A Leung Uk Tsuen	Ventilation Shaft	West Elevation	365	99	5	38	45	49					
			North Elevation	231	98	0	46							
			East Elevation	227	100	0	48							
			South Elevation	236	99	10	37							
SS11a	Leung Uk Tsuen Squats	Ventilation Shaft	West Elevation	240	99	10	36	50	52					
			North Elevation	174	98	0	48							
			East Elevation	187	100	10	40							
			South Elevation	176	99	10	39							
SS14	Leung Uk Tsuen	Ventilation Shaft	West Elevation	163	99	0	50	52	52					
			North Elevation	281	98	0	44							
			East Elevation	281	100	5	41							
			South Elevation	287	99	10	35							
			West Elevation	287	99	10	35	46	49					
			North Elevation	281	98	0	44							
			East Elevation	281	100	5	41							
			South Elevation	287	99	10	35							

**Appendix 5.6**  
**Daytime Fixed Plant Noise Impact Assessment**

NSR No.	Description	Plant item	Direction Facing	Distance , m	SWL, dB(A)	Correction for line of sight <sup>(1)</sup> , dB(A)	SPL, dB(A)	Total SPL, dB(A)	Daytime Noise Criteria, dB(A)					
<b>Pat Heung Ventilation Building (PHV)</b>														
PH1	DD 114 LOT 1405 Sheung Tsuen	Ventilation Shaft	North Elevation 1	92	91	10	37							
			North Elevation 2	88	91	10	37							
			North Elevation 3	84	91	10	38							
			East Elevation 1	79	86	5	38							
			East Elevation 2	59	84	5	39							
			East Elevation 3	53	83	5	39							
			South Elevation 1	51	81	0	42							
			South Elevation 2	53	81	0	42							
			South Elevation 3	59	82	0	42							
			West Elevation	70	91	10	39			49	49			
<b>Shing Mun Ventilation Building (SMV)</b>														
SM1	Sau Shan House, Cheung Shan Estate	Ventilation Shaft	North Elevation 1	40	90	0	53							
			North Elevation 2	37	90	0	54							
			East Elevation	-	-	0	0							
			South Elevation	57	102	10	52							
			West Elevation 1	57	92	10	42							
SM4	Shui Hong Nursing Home	Ventilation Shaft	West Elevation 2	46	90	10	42	58	60					
			North Elevation 1	40	90	0	53							
			North Elevation 2	44	90	0	52							
			East Elevation	-	-	0	0							
			South Elevation	57	102	10	52							
			West Elevation 1	51	92	0	53							
			West Elevation 2	40	90	0	53			60	60			
<b>Kwai Chung Ventilation Building (KCV)</b>														
KC1	Kwai Oi House, Kwai Fong Estate	Ventilation Shaft	North Elevation 1	308	113	10	48							
			North Elevation 2	312	113	10	48							
			North Elevation 3	323	112	10	47							
			East Elevation	-	-	0	0							
			South Elevation 1	301	108	0	53							
			South Elevation 2	299	108	0	53							
			South Elevation 3	286	108	0	54							
			West Elevation	286	108	0	54			60	60			
<b>Nam Cheong Ventilation Building (NCV)</b>														
NC11	Tack Ching Girls' Secondary School	Ventilation Shaft	North Elevation 1	119	90	0	44							
			North Elevation 2	123	95	0	48							
			East Elevation 1	121	95	5	43							
			East Elevation 2	125	95	5	43							
			East Elevation 3	136	95	5	42							
			East Elevation 4	149	95	5	42							
			South Elevation	158	95	10	36							
			West Elevation	-	-	0	0							
			NC11a	Planned development (Site 6)	Ventilation Shaft	North Elevation 1	44			90	10	42	52	60
						North Elevation 2	42			95	10	48		
East Elevation 1	44	95				10	47							
East Elevation 2	42	95				10	48							
East Elevation 3	33	95				10	50							
East Elevation 4	29	95				10	51							
South Elevation	22	95				5	58							
West Elevation	-	-				0	0							
NC11b	Planned development (Site 6)	Ventilation Shaft	North Elevation 1	18	90	5	55	60	60					
			North Elevation 2	24	95	10	52							
			East Elevation 1	22	95	10	53							
			East Elevation 2	29	95	10	51							
			East Elevation 3	35	95	10	49							
			East Elevation 4	44	95	10	47							
			South Elevation	48	95	10	46							
			West Elevation	-	-	0	0							
NC16	Tower 3 Aqua Marine	Ventilation Shaft	North Elevation 1	220	90	0	38	60	60					
			North Elevation 2	226	95	0	43							
			East Elevation 1	224	95	5	38							
			East Elevation 2	229	95	5	38							
			East Elevation 3	242	95	5	37							
			East Elevation 4	253	95	5	37							
			South Elevation	259	95	10	32							
			West Elevation	-	-	0	0							
			<b>Mong Kok West Ventilation Building (MKV)</b>											
			MK6	Planned development at GIC zone	Ventilation Shaft	North Elevation 1	53			101	0	62		
North Elevation 2	42	100				0	63							
East Elevation	-	-				0	0							
South Elevation	-	-				0	0							
West Elevation	-	-				0	0	65	65					
<b>Ventilation Building for WKT</b>														
WK1	Planned Residential Development at Hoi Wang Road	Substation S-1	East Elevation	48	99	0	60	60	60					
WK3	46-48 Man King Building	Ventilation Shaft 5K	East Elevation	168	100	0	50							
			Ventilation Shaft 5L	East Elevation	162	101	0			52				
			Ventilation Shaft 10A	South Elevation	120	100	5			48				
			Ventilation Shaft 10B	West Elevation	111	100	10			44				
			Ventilation Shaft 10C	West Elevation	108	100	10			44				
WK4	Tower 6, Sorrento	Ventilation Shaft 2A	West Elevation	186	100	0	50	56	60					
			Ventilation Shaft 2B	West Elevation	171	100	0			50				
			Ventilation Shaft 4J	West Elevation	90	99	0			55				
			Ventilation Shaft 10A	South Elevation	108	100	0			54				
			Ventilation Shaft 10B	West Elevation	120	100	0			53				
			Ventilation Shaft 10C	West Elevation	165	100	0			51				
			West Elevation	84	100	0	57							
WK8	Tower 3, The Waterfront	Ventilation Shaft 2A	West Elevation	90	100	0	56	60	60					
			Ventilation Shaft 2B	West Elevation	90	100	0			56				
			Ventilation Shaft 4J	West Elevation	159	99	0			50				
WK11	Planned Development	Ventilation Shaft 5K	East Elevation	84	100	0	57	60	60					
			Ventilation Shaft 5L	East Elevation	84	101	0			58				
WK12	Planned Development	Ventilation Shaft 6M	East Elevation	158	102	0	53	60	60					
			Ventilation Shaft 7P	East Elevation	101	101	0			56				
WK14	Moon Tower, The Arch	Ventilation Shaft 8D	West Elevation	222	96	0	44	52	60					
			Ventilation Shaft 9F/9G/9H	West Elevation	288	96	0			42				
WK16	Planned Development	Ventilation Shaft 9F/9G/9H	South Elevation	40	92	0	55	60	60					
			Ventilation Shaft 9F/9G/9H	East Elevation	44	98	5			55				
			Ventilation Shaft 9F/9G/9H	West Elevation	44	96	5			53				
WK17	Planned Development	Ventilation Shaft 8D	West Elevation	42	96	5	54	60	60					
			Ventilation Shaft 8D	South Elevation	35	93	0			57				
			Ventilation Shaft 9F/9G/9H	West Elevation	88	96	0			52				

Remark:

1) A negative correction of 10 dB(A) has been adopted to the direction facing of the ventilation shaft totally screened by buildings and negative correction of 5 dB(A) for NSR do not have direct line of sight to the louvers.

**Appendix 5.6**  
**Night-time Fixed Plant Noise Impact Assessment**

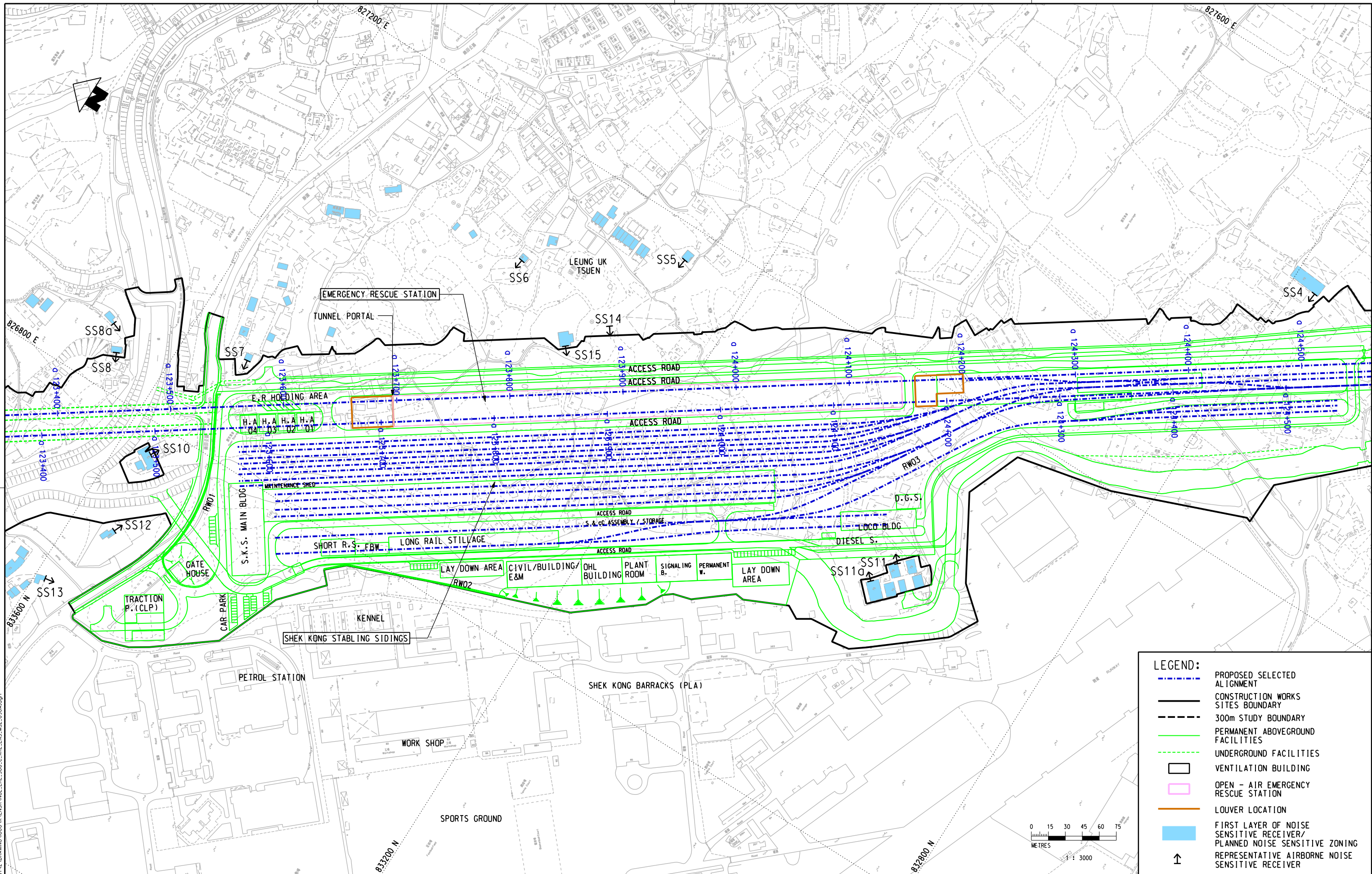
NSR No.	Description	Plant item	Direction Facing	Distance , m	SWL, dB(A)	Correction for line of sight <sup>(1)</sup> , dB(A)	SPL, dB(A)	Total SPL, dB(A)	Night-time Noise Criteria, dB(A)
<b>Mai Po Ventilation Building (MPV)</b>									
MP1	House 5 Phase A Royal Palms	Ventilation Shaft	North Elevation 1	134	86	10	28	45	50
			North Elevation 2	141	86	10	28		
			East Elevation 1	145	86	10	28		
			East Elevation 2	136	86	10	28		
			South Elevation 1	130	85	0	38		
			South Elevation 2	123	85	0	38		
			South Elevation 3	121	85	0	38		
			West Elevation 1	123	84	0	37		
			West Elevation 2	130	84	0	37		
			West Elevation 3	130	84	0	37		
MP5	Proposed Comprehensive Development at Wo Shang Wai	Ventilation Shaft	North Elevation 1	101	86	5	36	45	45
			North Elevation 2	116	86	5	35		
			East Elevation 1	125	86	10	29		
			East Elevation 2	125	86	10	29		
			South Elevation 1	119	85	5	34		
			South Elevation 2	108	85	5	34		
			South Elevation 3	97	85	5	35		
			West Elevation 1	92	84	0	40		
			West Elevation 2	92	84	0	40		
			West Elevation 3	92	84	0	40		
MP6	Planned village house at Village Zone	Ventilation Shaft	North Elevation 1	88	86	0	42	50	50
			North Elevation 2	73	86	0	44		
			East Elevation 1	66	86	0	45		
			East Elevation 2	68	86	0	44		
			South Elevation 1	75	85	5	38		
			South Elevation 2	86	85	5	36		
			South Elevation 3	95	85	5	35		
			West Elevation 1	99	84	10	29		
			West Elevation 2	97	84	10	29		
			West Elevation 3	97	84	10	29		
<b>Ngau Tam Mei Ventilation Building (NTV)</b>									
NT1	Yau Tam Mei Village House	Ventilation Shaft	North Elevation 1	64	73	0	32	42	44
			North Elevation 2	64	73	0	32		
			North Elevation 3	64	72	0	31		
			North Elevation 4	70	72	0	30		
			North Elevation 5	82	72	0	29		
			East Elevation 1	91	74	10	20		
			East Elevation 2	79	74	10	21		
			East Elevation 3	67	76	10	25		
			South Elevation 1	100	73	10	18		
			South Elevation 2	100	73	10	18		
			South Elevation 3	103	74	10	19		
			South Elevation 4	12	76	10	39		
			South Elevation 5	127	76	10	19		
			West Elevation 1	100	76	10	21		
			West Elevation 2	118	76	10	20		
			West Elevation 3	130	76	10	19		
			West Elevation 4	130	76	10	19		
			West Elevation 5	130	76	10	19		
			West Elevation 6	130	76	10	19		
			NT4	Yau Tam Mei Village House	Ventilation Shaft	North Elevation 1	88		
North Elevation 2	97	73				10	18		
North Elevation 3	112	72				10	16		
North Elevation 4	130	72				10	15		
North Elevation 5	152	72				10	13		
East Elevation 1	85	74				0	30		
East Elevation 2	85	74				0	30		
East Elevation 3	85	76				0	32		
South Elevation 1	88	73				5	24		
South Elevation 2	97	73				5	23		
South Elevation 3	127	74				5	22		
South Elevation 4	152	76				5	22		
South Elevation 5	179	76				5	21		
West Elevation 1	112	76				10	20		
West Elevation 2	191	76				10	15		
West Elevation 3	194	76				10	15		
West Elevation 4	194	76				10	15		
West Elevation 5	194	76				10	15		
West Elevation 6	194	76				10	15		
<b>ERS North End Ventilation Building (ENV)</b>									
SS6	32 Leung Uk Tsuen	Ventilation Shaft	North Elevation	184	91	10	31	45	45
			East Elevation	173	90	0	40		
			South Elevation	179	93	0	43		
			West Elevation	191	93	10	32		
SS7	Leung Uk Tsuen	Ventilation Shaft	North Elevation	122	91	0	44	47	47
			East Elevation	121	90	0	43		
			South Elevation	128	93	10	36		
SS10	DD110 LOT 482, Wang Toi Shan Choi Yuen Tsuen	Ventilation Shaft	West Elevation	131	93	10	36	42	47
			North Elevation	207	91	0	40		
			East Elevation	211	90	5	34		
SS12	No. 265 Kam Tai Road	Ventilation Shaft	South Elevation	212	93	10	31	40	47
			West Elevation	209	93	5	37		
			West Elevation	209	93	5	37		
SS15	Abandoned Shek Kong village house	Ventilation Shaft	North Elevation	257	91	0	38	45	47
			East Elevation	265	90	10	27		
			South Elevation	263	93	10	30		
			West Elevation	256	93	5	35		
SS15	Abandoned Shek Kong village house	Ventilation Shaft	North Elevation	174	91	10	31	45	47
			East Elevation	168	90	5	35		
			South Elevation	169	93	0	43		
			West Elevation	176	93	10	33		
<b>ERS South End Ventilation Building (ESV)</b>									
SS2	Nam Hing Lei	Ventilation Shaft	North Elevation	440	95	10	27	37	39
			East Elevation	441	93	10	25		
			South Elevation	435	93	0	35		
			West Elevation	435	93	5	30		
SS4	Leung Uk Tsuen Village House	Ventilation Shaft	North Elevation	365	95	10	29	39	39
			East Elevation	360	93	5	32		
			South Elevation	359	93	0	37		
SS5	51A Leung Uk Tsuen	Ventilation Shaft	West Elevation	365	93	5	32	45	45
			North Elevation	231	95	0	43		
			East Elevation	227	93	0	41		
SS11a	Leung Uk Tsuen Squats	Ventilation Shaft	South Elevation	236	93	10	31	48	50
			West Elevation	240	93	10	30		
			West Elevation	240	93	10	30		
SS14	Leung Uk Tsuen	Ventilation Shaft	North Elevation	174	95	0	45	42	47
			East Elevation	187	93	10	33		
			South Elevation	176	93	10	33		
			West Elevation	163	93	0	44		
SS14	Leung Uk Tsuen	Ventilation Shaft	North Elevation	281	95	0	41	42	47
			East Elevation	281	93	5	34		
			South Elevation	287	93	10	29		
			West Elevation	287	93	10	29		

**Appendix 5.6**  
**Night-time Fixed Plant Noise Impact Assessment**

NSR No.	Description	Plant item	Direction Facing	Distance , m	SWL, dB(A)	Correction for line of sight <sup>(1)</sup> , dB(A)	SPL, dB(A)	Total SPL, dB(A)	Night-time Noise Criteria, dB(A)					
<b>Pat Heung Ventilation Building (PHV)</b>														
PH1	DD 114 LOT 1405 Sheung Tsuen	Ventilation Shaft	North Elevation 1	92	85	10	31	43	43					
			North Elevation 2	88	85	10	31							
			North Elevation 3	84	85	10	32							
			East Elevation 1	79	80	5	32							
			East Elevation 2	59	78	5	33							
			East Elevation 3	53	77	5	33							
			South Elevation 1	51	75	0	36							
			South Elevation 2	53	75	0	36							
			South Elevation 3	59	76	0	36							
			West Elevation	70	85	10	33							
<b>Shing Mun Ventilation Building (SMV)</b>														
SM1	Sau Shan House, Cheung Shan Estate	Ventilation Shaft	North Elevation 1	40	80	0	43	48	50					
			North Elevation 2	37	80	0	44							
			East Elevation	-	-	0	0							
			South Elevation	57	92	10	42							
			West Elevation 1	57	82	10	32							
SM4	Shui Hong Nursing Home	Ventilation Shaft	West Elevation 2	46	80	10	32	50	50					
			North Elevation 1	40	80	0	43							
			North Elevation 2	44	80	0	42							
			East Elevation	-	-	0	0							
			South Elevation	57	92	10	42							
			West Elevation 1	51	82	0	43							
			West Elevation 2	40	80	0	43							
<b>Kwai Chung Ventilation Building (KCV)</b>														
KC1	Kwai Oi House, Kwai Fong Estate	Ventilation Shaft	North Elevation 1	308	103	10	38	50	50					
			North Elevation 2	312	103	10	38							
			North Elevation 3	323	102	10	37							
			East Elevation	-	-	0	0							
			South Elevation 1	301	98	0	43							
			South Elevation 2	299	98	0	43							
			South Elevation 3	286	98	0	44							
			West Elevation	286	98	0	44							
			<b>Nam Cheong Ventilation Building (NCV)</b>											
			NC11	Tack Ching Girls' Secondary School	Ventilation Shaft	North Elevation 1	119			80	0	34	42	50
North Elevation 2	123	85				0	38							
East Elevation 1	121	85				5	33							
East Elevation 2	125	85				5	33							
East Elevation 3	136	85				5	32							
East Elevation 4	149	85				5	32							
South Elevation	158	85				10	26							
West Elevation	-	-				0	0							
NC11a	Planned development (Site 6)	Ventilation Shaft				North Elevation 1	44	80	10	32	50	50		
						North Elevation 2	42	85	10	38				
			East Elevation 1	44	85	10	37							
			East Elevation 2	42	85	10	38							
			East Elevation 3	33	85	10	40							
			East Elevation 4	29	85	10	41							
			South Elevation	22	85	5	48							
			West Elevation	-	-	0	0							
			NC11b	Planned development (Site 6)	Ventilation Shaft	North Elevation 1	18	80	5	45			50	50
						North Elevation 2	24	85	10	42				
East Elevation 1	22	85				10	43							
East Elevation 2	29	85				10	41							
East Elevation 3	35	85				10	39							
East Elevation 4	44	85				10	37							
South Elevation	48	85				10	36							
West Elevation	-	-				0	0							
NC16	Tower 3 Aqua Marine	Ventilation Shaft				North Elevation 1	220	80	0	28	37	55		
						North Elevation 2	226	85	0	33				
			East Elevation 1	224	85	5	28							
			East Elevation 2	229	85	5	28							
			East Elevation 3	242	85	5	27							
			East Elevation 4	253	85	5	27							
			South Elevation	259	85	10	22							
			West Elevation	-	-	0	0							
			<b>Mong Kok West Ventilation Building (MKV)</b>											
			MK6	Planned development at GIC zone	Ventilation Shaft	North Elevation 1	53	91	0	52			55	55
North Elevation 2	42	90				0	53							
East Elevation	-	-				0	0							
South Elevation	-	-				0	0							
West Elevation	-	-				0	0							
<b>Ventilation Building for WKT</b>														
WK1	Planned Residential Development at Hoi Wang Road	Substation S-1	East Elevation	48	89	0	50	50	50					
WK3	46-48 Man King Building	Ventilation Shaft 5K	East Elevation	168	90	0	40	46	50					
			Ventilation Shaft 5L	East Elevation	162	91	0			42				
			Ventilation Shaft 10A	South Elevation	120	90	5			38				
			Ventilation Shaft 10B	West Elevation	111	90	10			34				
			Ventilation Shaft 10C	West Elevation	108	90	10			34				
WK4	Tower 6, Sorrento	Ventilation Shaft 2A	West Elevation	186	90	0	40	50	50					
			Ventilation Shaft 2B	West Elevation	171	90	0			40				
			Ventilation Shaft 4J	West Elevation	90	89	0			45				
			Ventilation Shaft 10A	South Elevation	108	90	0			44				
			Ventilation Shaft 10B	West Elevation	120	90	0			43				
			Ventilation Shaft 10C	West Elevation	165	90	0			41				
			Ventilation Shaft 2A	West Elevation	84	90	0			47				
WK8	Tower 3, The Waterfront	Ventilation Shaft 2B	West Elevation	90	90	0	46	50	50					
			Ventilation Shaft 4J	West Elevation	159	89	0			40				
			Ventilation Shaft 5K	East Elevation	84	90	0			47				
WK11	Planned Development	Ventilation Shaft 5L	East Elevation	84	91	0	48	50	50					
			Ventilation Shaft 6M	East Elevation	158	92	0			43				
WK12	Planned Development	Ventilation Shaft 7P	East Elevation	101	91	0	46	50	50					
			Ventilation Shaft 8D	West Elevation	222	86	0			34				
WK14	Moon Tower, The Arch	Ventilation Shaft 9F/9G/9H	West Elevation	288	86	0	32	42	50					
			Ventilation Shaft 9F/9G/9H	South Elevation	40	82	0			45				
WK16	Planned Development	Ventilation Shaft 9F/9G/9H	East Elevation	44	88	5	45	50	50					
			Ventilation Shaft 9F/9G/9H	West Elevation	44	86	5			43				
			Ventilation Shaft 8D	West Elevation	42	86	5			44				
WK17	Planned Development	Ventilation Shaft 8D	South Elevation	35	83	0	47	50	50					
			Ventilation Shaft 9F/9G/9H	West Elevation	88	86	0			42				

Remark:

1) A negative correction of 10 dB(A) has been adopted to the direction facing of the ventilation shaft totally screened by buildings and negative correction of 5 dB(A) for NSR do not have direct line of sight to the louvers.



**LEGEND:**

- - - - - PROPOSED SELECTED ALIGNMENT
- CONSTRUCTION WORKS
- SITES BOUNDARY
- 300m STUDY BOUNDARY
- PERMANENT ABOVEGROUND FACILITIES
- UNDERGROUND FACILITIES
- VENTILATION BUILDING
- OPEN - AIR EMERGENCY RESCUE STATION
- LOUVER LOCATION
- FIRST LAYER OF NOISE SENSITIVE RECEIVER/ PLANNED NOISE SENSITIVE ZONING
- REPRESENTATIVE AIRBORNE NOISE SENSITIVE RECEIVER

PLOT DRW: R:\nst\mtr\p1\01\DRIVER\WINDOWS\_V3\_C01\01.dgn  
 MODELNAME: 2009-6-27 15:49:49  
 FILENAME: p:\prj\erl\300\c\XRL\ENS\M52\_090A.dgn

REV	DESCRIPTION	BY	DATE	APPROVED	REV	DESCRIPTION	BY	DATE	APPROVED

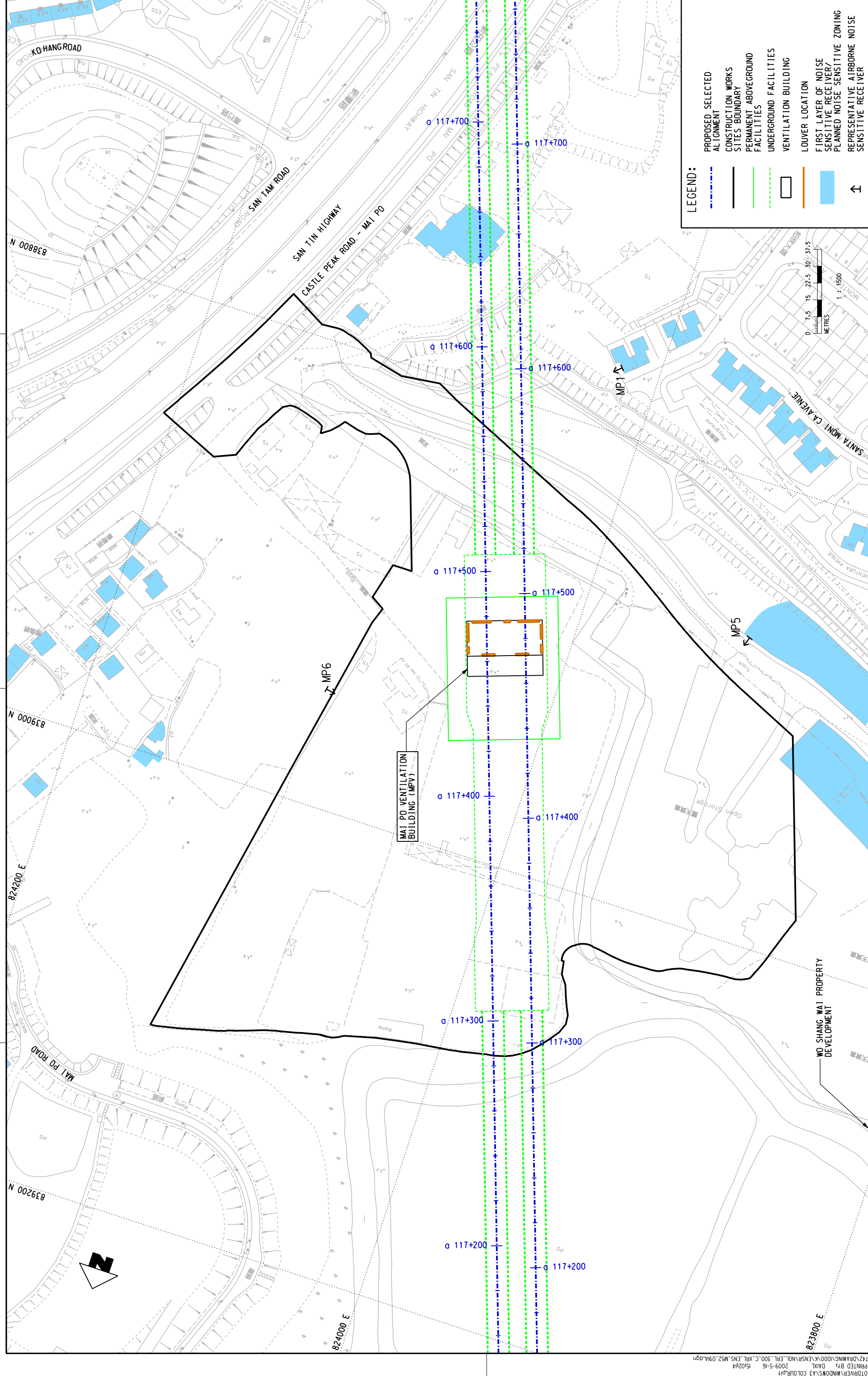
DRAWN	GXH
DESIGNED	TWF
CHECKED	KCC
APPROVED	PL
DATE	19/AUG./2008

**EXPRESS RAIL LINK**

ORIGINATOR  
 CADD REF. NOL\_ERL\_300\_C\_XRL\_ENS\_M52\_090A.dgn

**TITLE**  
**NOL / ERL-300**  
**ENVIRONMENTAL IMPACT ASSESSMENT**  
**LOCATION OF FIXED PLANTS**

SCALE 1 : 3000 (A3)    FIGURE NO. NOL/ERL/300/C/XRL/ENS/M52/090    REV. A

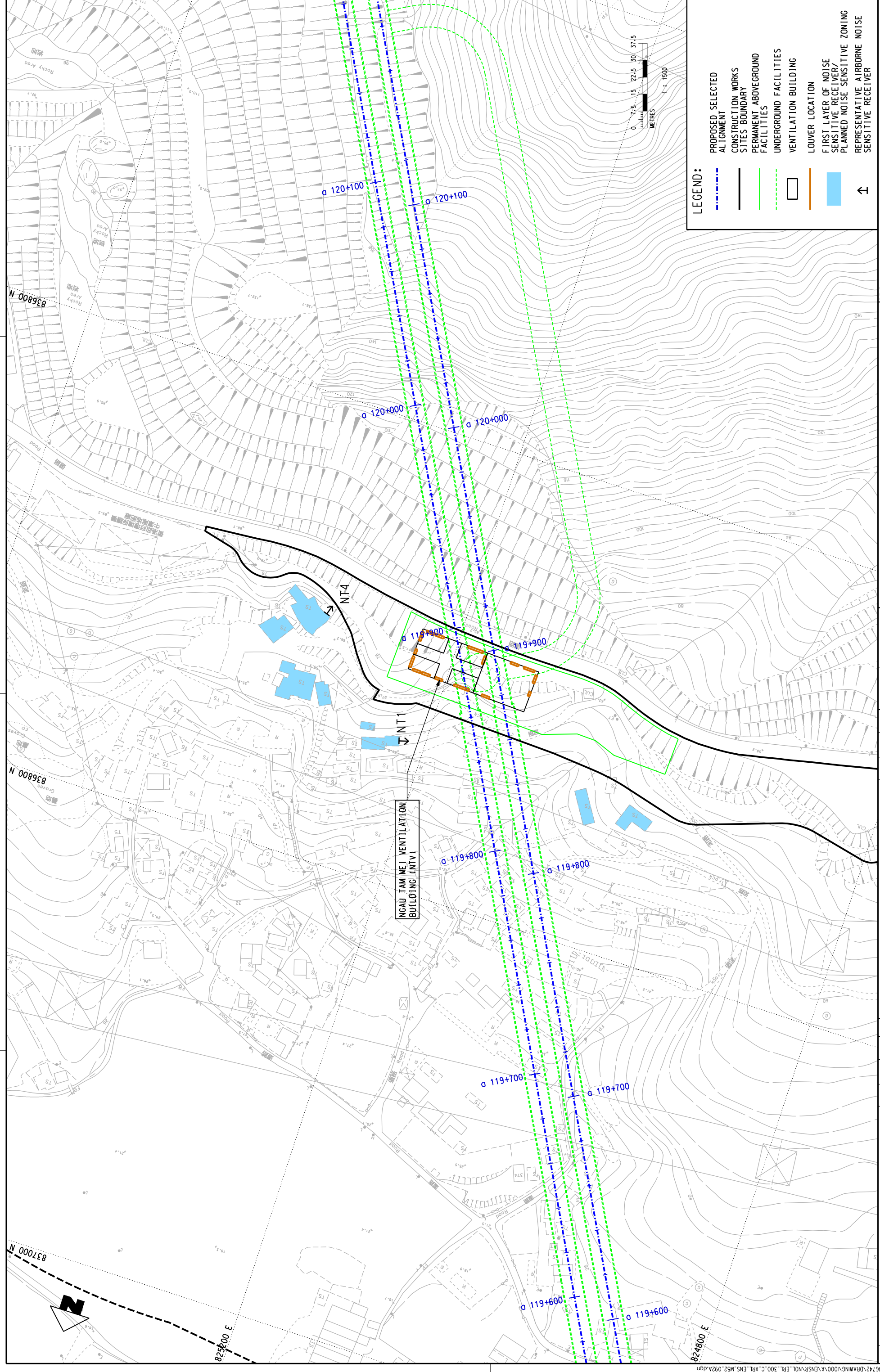


**LEGEND:**

- PROPOSED SELECTED ALIGNMENT
- - - CONSTRUCTION WORKS SITES BOUNDARY
- PERMANENT ABOVEGROUND FACILITIES
- - - UNDERGROUND FACILITIES
- VENTILATION BUILDING
- LOWER LOCATION
- FIRST LAYER OF NOISE SENSITIVE RECEIVER / PLANNED NOISE SENSITIVE ZONING
- ↑ REPRESENTATIVE AIRBORNE NOISE SENSITIVE RECEIVER

TITLE <b>NOL / ERL -300 ENVIRONMENTAL IMPACT ASSESSMENT LOCATIONS OF FIXED PLANTS</b>		SCALE 1 : 1500 (A3)		FIGURE NO. NOL/ERL/300/C/XRL/ENS/M52/091		REV. A	
Y.P. DESIGNED TWF		KCC CHECKED		PL APPROVED		DATE 22/APR./2009	
ORIGINATOR <b>ENSR AECOM</b>		MTR		EXPRESS RAIL LINK		NOL_ERL_300_C_XRL_ENS_M52_091A.dgn	
BY	DATE	APPROVED	REV	DATE	APPROVED	DESCRIPTION	REV

PLOT DRY: R:\vs\ts\mtr\p\l\01\DRIVER\MND\03\3 COLOUR.PHT  
 MODELNAME: Default  
 DATE: 2009-5-16 15:28:44  
 P:\projects\60046142\DRAWING\003\ENSR\NOL\_ERL\_300\_C\_XRL\_ENS\_M52\_091A.dgn



**LEGEND:**

- PROPOSED SELECTED ALIGNMENT
- CONSTRUCTION WORKS
- SITES BOUNDARY
- PERMANENT ABOVEGROUND FACILITIES
- UNDERGROUND FACILITIES
- VENTILATION BUILDING
- LOWER LOCATION
- FIRST LAYER OF NOISE SENSITIVE RECEIVER
- PLANNED NOISE SENSITIVE ZONING
- ↑ REPRESENTATIVE AIRBORNE NOISE SENSITIVE RECEIVER

TITLE  
**NOL / ERL -300 ENVIRONMENTAL IMPACT ASSESSMENT LOCATIONS OF FIXED PLANTS**

SCALE  
 1 : 1500 (A3) NOL/ERL/300/C/XRL/ENS/M52/092

FIGURE NO.  
 NOL/ERL/300-C-XRL-ENS\_M52\_092A.dgn

REV. A

ORIGINATOR  
**ENSR AECOM**

DESIGNED  
 HBF

CHECKED  
 TWF

APPROVED  
 KCC

DATE  
 22/APR./2009

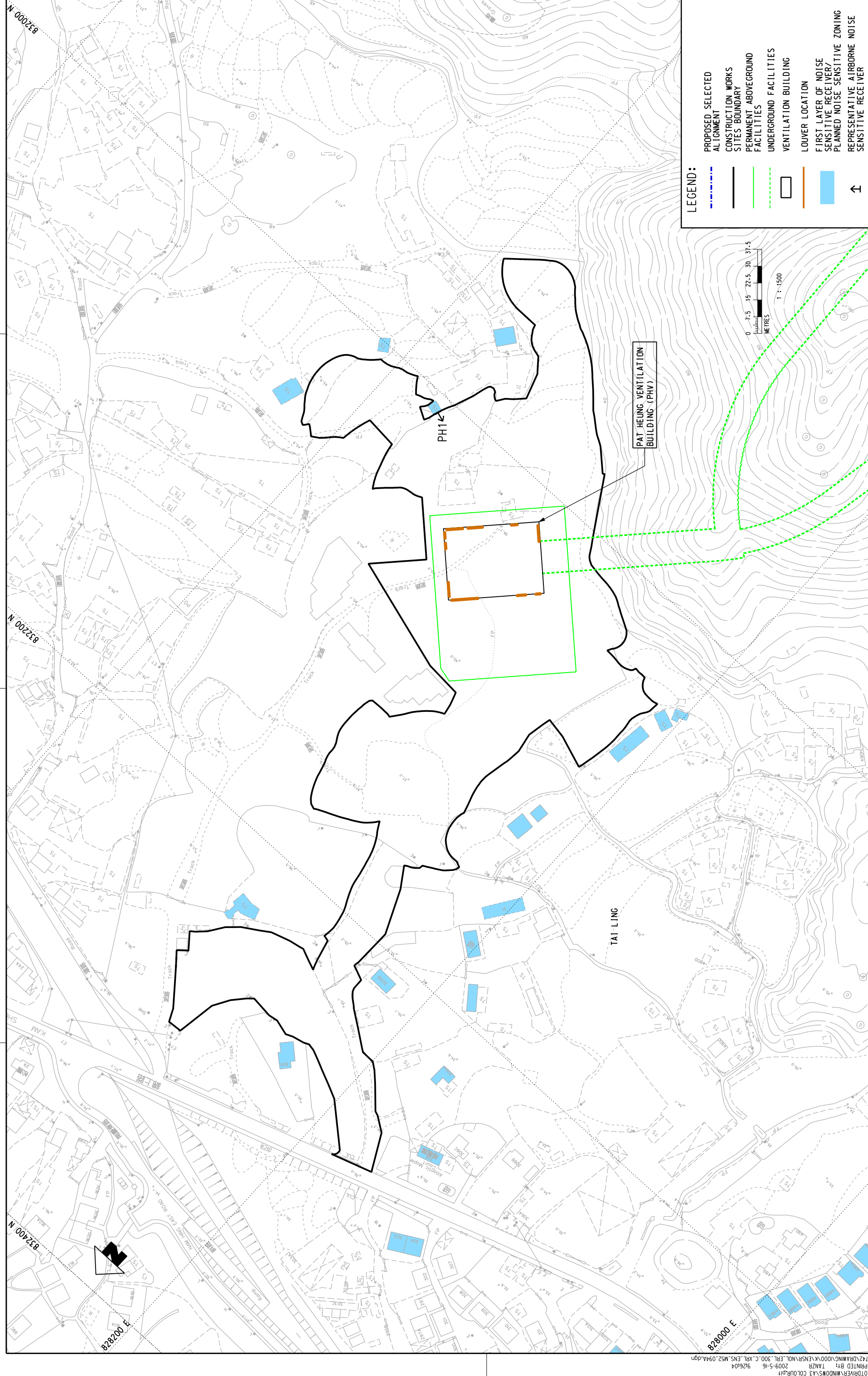
DO NOT SCALE DRAWINGS. ALL DIMENSIONS SHALL BE AS SHOWN. THIS DRAWING IS THE PROPERTY OF ENSR AECOM. NO PART OF THIS DRAWING IS TO BE REPRODUCED OR TRANSMITTED IN ANY FORM OR BY ANY MEANS, ELECTRONIC OR MECHANICAL, WITHOUT PERMISSION IN WRITING FROM ENSR AECOM.

APPROVED  
 DATE

BY

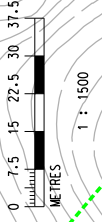
DESCRIPTION

REV	DESCRIPTION	BY	DATE	APPROVED	REV	BY	DATE	APPROVED



**LEGEND:**

- PROPOSED SELECTED ALIGNMENT
- CONSTRUCTION WORKS SITES BOUNDARY
- PERMANENT ABOVEGROUND FACILITIES
- UNDERGROUND FACILITIES
- VENTILATION BUILDING
- LOWER LOCATION
- FIRST LAYER OF NOISE SENSITIVE RECEIVER / PLANNED NOISE SENSITIVE ZONING
- ↑ REPRESENTATIVE AIRBORNE NOISE SENSITIVE RECEIVER



**NOL / ERL -300 ENVIRONMENTAL IMPACT ASSESSMENT LOCATIONS OF FIXED PLANTS**

SCALE 1 : 1500 (A3) NOL/ERL/300/C/XRL/ENS/M52/094

FIGURE NO. REV. A

**MTR**

**EXPRESS RAIL LINK**

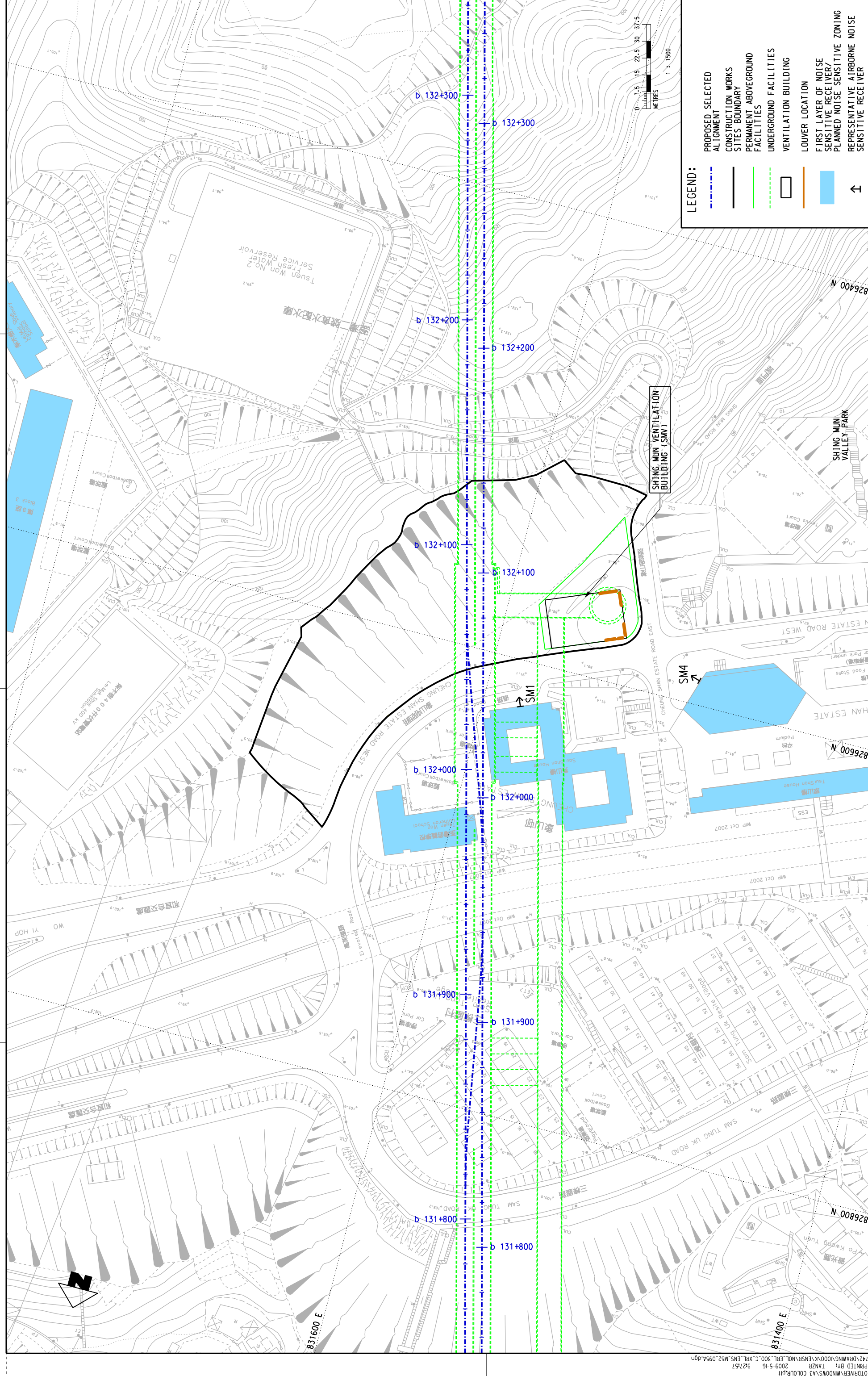
**ENSR AECOM**

ORIGINATOR

DESIGNED	YHS
CHECKED	TWF
APPROVED	KCC
DATE	PL
22/APR./2009	

REV	DESCRIPTION	BY	DATE	APPROVED	REV	DESCRIPTION	BY	DATE	APPROVED

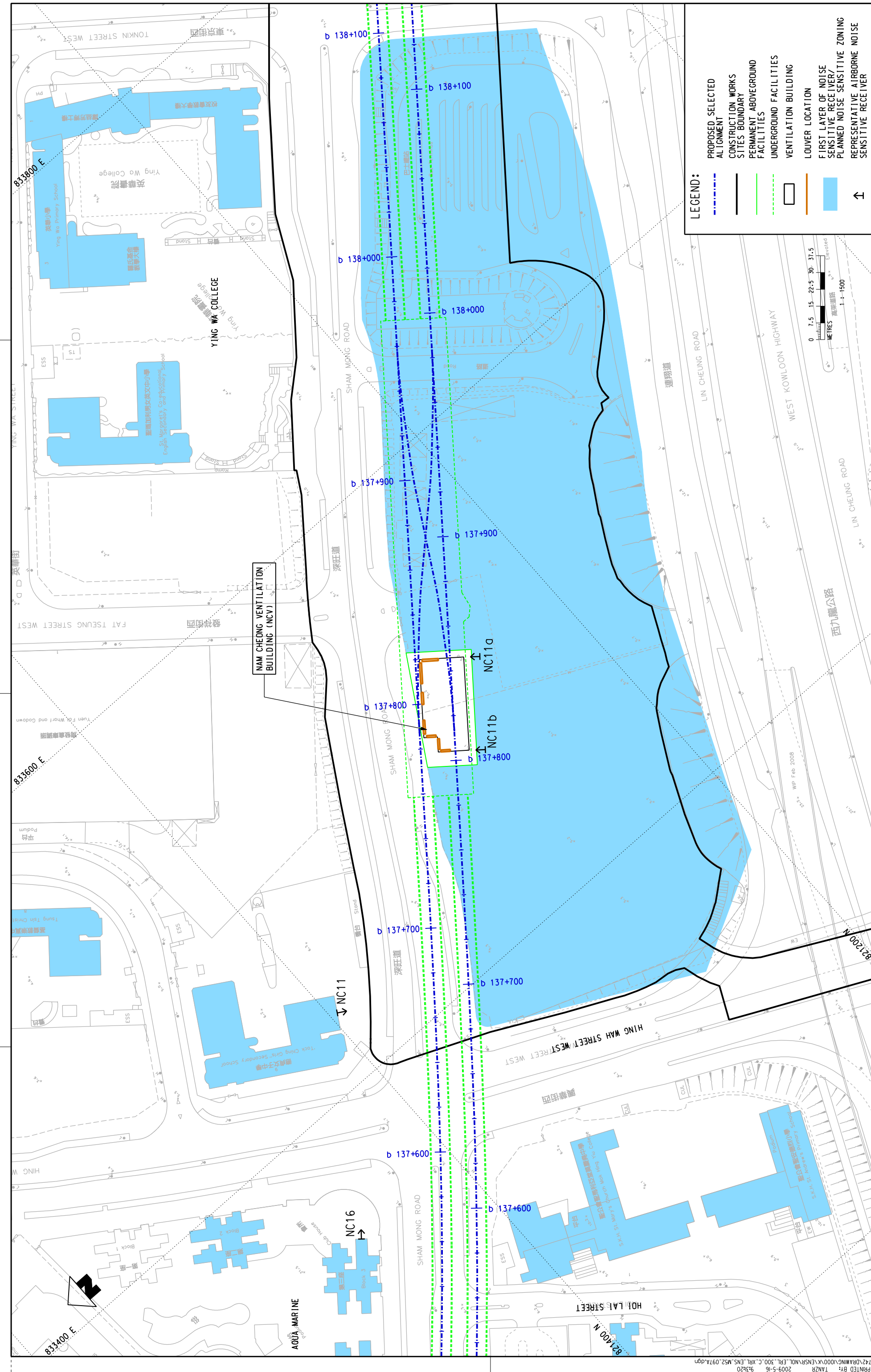




<p>PL01.DWG: R:\projects\16004672\DRAWING\000\K\ENSR\NOL_ERL_300_C_XRL_ENS_M52_095A.dgn</p> <p>MODELNAME: Default</p> <p>PRINTED BY: TANR</p> <p>2009-5-16 9:27:57</p>	<p>REVISIONS</p> <table border="1"> <thead> <tr> <th>NO.</th> <th>DATE</th> <th>APPROVED</th> <th>REV</th> <th>DESCRIPTION</th> </tr> </thead> <tbody> <tr> <td> </td> <td> </td> <td> </td> <td> </td> <td> </td> </tr> </tbody> </table>	NO.	DATE	APPROVED	REV	DESCRIPTION						<p>DATE: 22/APR./2009</p> <p>APPROVED: [Signature]</p> <p>CHECKED: [Signature]</p> <p>DESIGNED: [Signature]</p> <p>DATE: 22/APR./2009</p> <p>APPROVED: [Signature]</p> <p>CHECKED: [Signature]</p> <p>DESIGNED: [Signature]</p>	<p>ORIGINATOR: ENSR   AECOM</p> <p>EXPRESS RAIL LINK</p> <p>MTR</p>	<p>TITLE: NOL / ERL -300 ENVIRONMENTAL IMPACT ASSESSMENT LOCATIONS OF FIXED PLANTS</p> <p>SCALE: 1 : 1500 (A3)</p> <p>FIGURE NO: NOL/ERL/300/C/XRL/ENS/M52/095</p> <p>REV: A</p>
NO.	DATE	APPROVED	REV	DESCRIPTION										

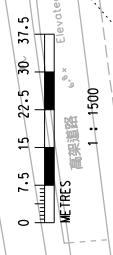
DO NOT SCALE DRAWINGS. ALL DIMENSIONS SHALL BE AS SHOWN. THIS DRAWING IS THE PROPERTY OF MTR CORPORATION LIMITED. ALL RIGHTS RESERVED. NO PART OF THIS DRAWING IS TO BE REPRODUCED OR TRANSMITTED IN ANY FORM OR BY ANY MEANS, ELECTRONIC OR MECHANICAL, WITHOUT THE WRITTEN PERMISSION OF MTR CORPORATION LIMITED.





**LEGEND:**

- PROPOSED SELECTED ALIGNMENT
- CONSTRUCTION WORKS SITES BOUNDARY
- PERMANENT ABOVEGROUND FACILITIES
- UNDERGROUND FACILITIES
- VENTILATION BUILDING
- LOWER LOCATION
- FIRST LAYER OF NOISE SENSITIVE RECEIVER
- PLANNED NOISE SENSITIVE ZONING
- REPRESENTATIVE AIRBORNE NOISE SENSITIVE RECEIVER



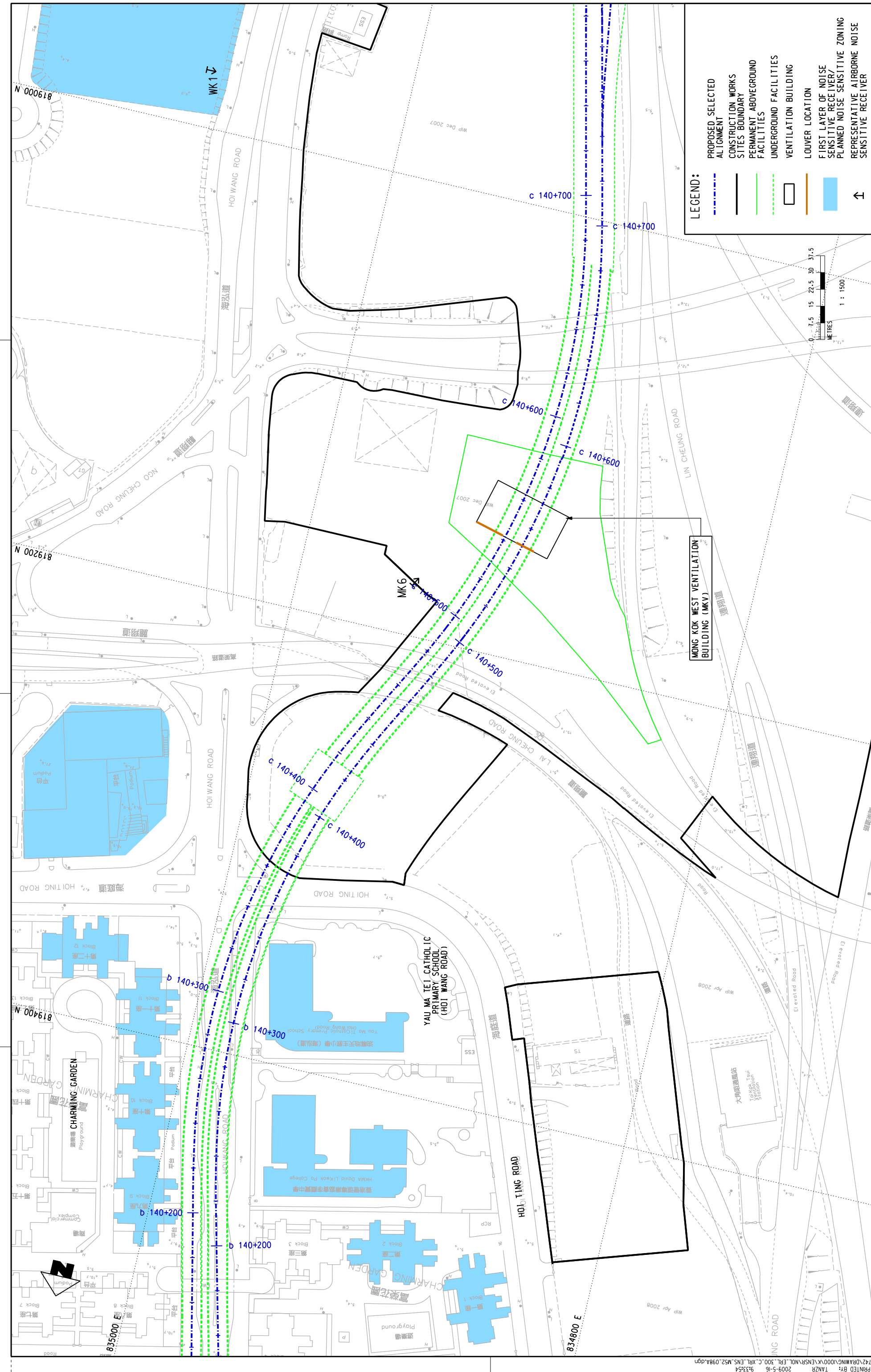
**NOL / ERL -300 ENVIRONMENTAL IMPACT ASSESSMENT LOCATIONS OF FIXED PLANTS**

DESIGNED	HB	DESIGNED	HB
CHECKED	TF	CHECKED	TF
APPROVED	KCC	APPROVED	KCC
DATE	22/APR./2008	DATE	22/APR./2008

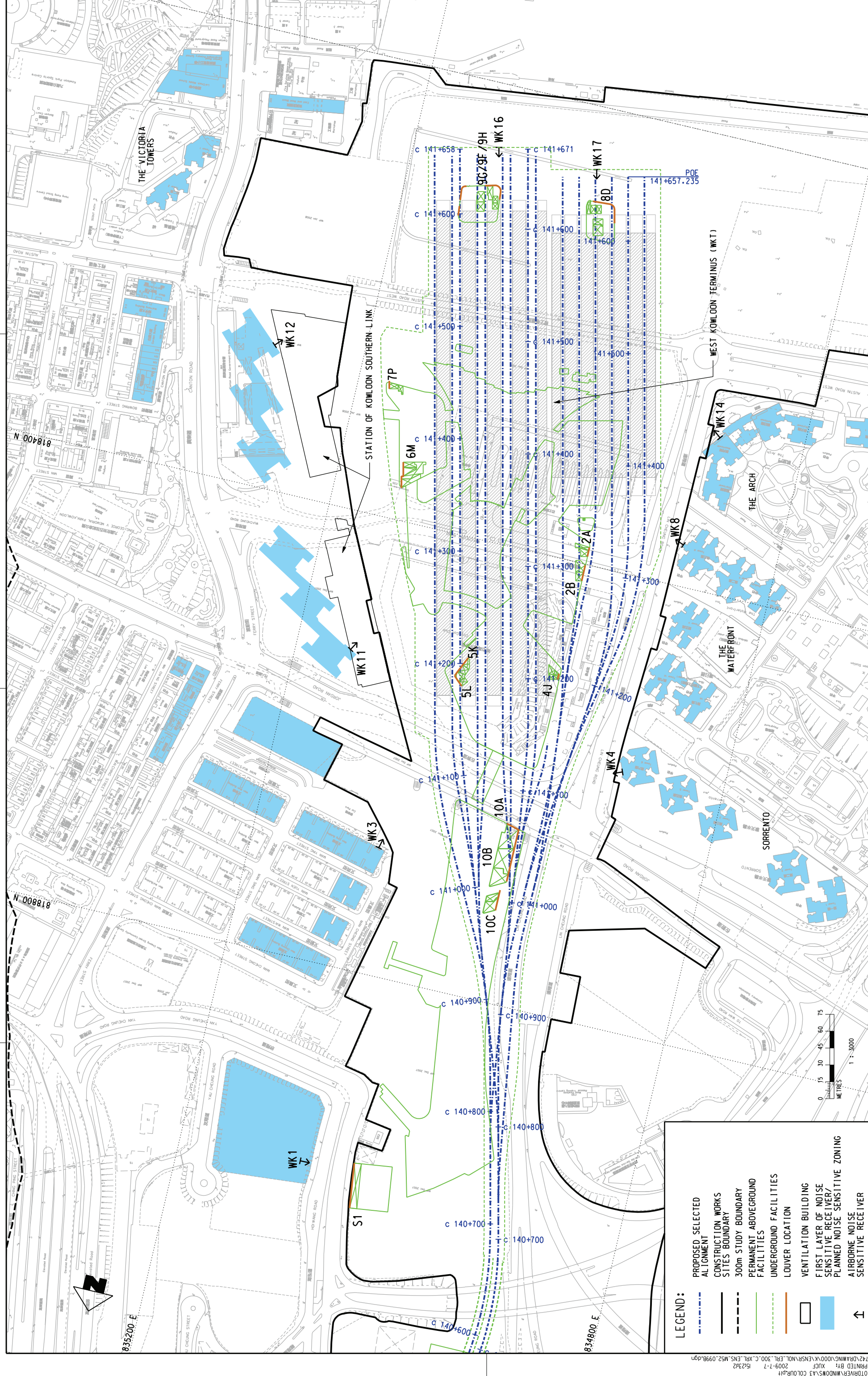
**MTR**  
EXPRESS RAIL LINK  
**ENSR** | **AECOM**

DRAIN	DESIGNED	CHECKED	APPROVED	DATE	22/APR./2008
DESIGNED	TF	CHECKED	KCC	APPROVED	PL
CHECKED	KCC	APPROVED	PL	DATE	22/APR./2008

SCALE 1 : 1500 (A3) NOL/ERL/300/C/XRL/ENS/M52/097  
FIGURE NO. NOL/ERL/300-C-XRL-ENS\_M52\_097A.dgn  
CADD REF. NOL\_ERL\_300\_C\_XRL-ENS\_M52\_097A.dgn



PLOT DWT: R:\5\ts\mtr\p101\DR\ENR\MND05\A3_C04\04PH MODELNAME: Default PRINTED BY: TANZR 2009-5-16 9:33:54 FILENAME: p:\projects\60046142\DRAWING\000\K\ENSR\NOL_ERL_300_C_XRL_ENS_M52_098A.dgn		REVISIONS NO. DESCRIPTION 1 BY DATE APPROVED REV 2 BY DATE APPROVED REV	APPROVED BY DATE APPROVED BY DATE	DESCRIPTION DESCRIPTION	YHS TWF KCC PL DATE 22/APR./2009 <small>DO NOT SCALE DRAWINGS. ALL DIMENSIONS SHALL BE TAKEN FROM THE DRAWING. THIS DRAWING IS THE PROPERTY OF MTR CORPORATION LIMITED. NO PART OF THIS DRAWING IS TO BE REPRODUCED OR TRANSMITTED IN ANY FORM OR BY ANY MEANS, WITHOUT THE WRITTEN PERMISSION OF MTR CORPORATION LIMITED.</small>	ORIGINATOR <b>ENSR AECOM</b>	EXPRESS RAIL LINK <b>MTR</b>	TITLE <b>NOL / ERL -300 ENVIRONMENTAL IMPACT ASSESSMENT LOCATIONS OF FIXED PLANTS</b>	SCALE 1 : 1500 (A3) FIGURE NO. NOL/ERL/300/C/XRL/ENS/M52/098 REV. A
---	--	--	--------------------------------------	----------------------------	---	---------------------------------	---------------------------------	--	---



**LEGEND:**

- PROPOSED SELECTED ALIGNMENT
- CONSTRUCTION WORKS
- SITES BOUNDARY
- 300m STUDY BOUNDARY
- PERMANENT ABOVEGROUND FACILITIES
- UNDERGROUND FACILITIES
- LOUVER LOCATION
- VENTILATION BUILDING
- FIRST LAYER OF NOISE SENSITIVE RECEIVER/PLANNED NOISE SENSITIVE ZONING
- AIRBORNE NOISE SENSITIVE RECEIVER

REV	DESCRIPTION	BY	DATE	APPROVED	REV	DATE	APPROVED	DESCRIPTION	BY	DATE	APPROVED
<p>DO NOT SCALE DRAWINGS. ALL DIMENSIONS SHALL BE TO THE DIMENSIONS SHOWN ON THE DRAWING. THIS DRAWING IS THE PROPERTY OF MTR CORPORATION LIMITED. ALL RIGHTS RESERVED. NO PART OF THIS DRAWING IS TO BE REPRODUCED OR TRANSMITTED IN ANY FORM OR BY ANY MEANS, ELECTRONIC OR MECHANICAL, WITHOUT THE WRITTEN PERMISSION OF MTR CORPORATION LIMITED.</p>											
<p>DATE: 19/AUG./2008</p>											
<p>APPROVED: [Signature]</p>											
<p>DESIGNED: [Signature]</p>											
<p>CHECKED: [Signature]</p>											
<p>APPROVED: [Signature]</p>											
<p>DATE: 19/AUG./2008</p>											
<p>ORIGINATOR: ENSR AECOM</p>											
<p>EXPRESS RAIL LINK</p>											
<p>MTR</p>											
<p>TITLE: NOL / ERL -300 ENVIRONMENTAL IMPACT ASSESSMENT LOCATION OF FIXED PLANTS</p>											
SCALE	1 : 3000 (A3)	FIGURE NO.	NOL/ERL/300/C/XRL/ENS/M52/099	REV.	B						