

## APPENDIX 12E

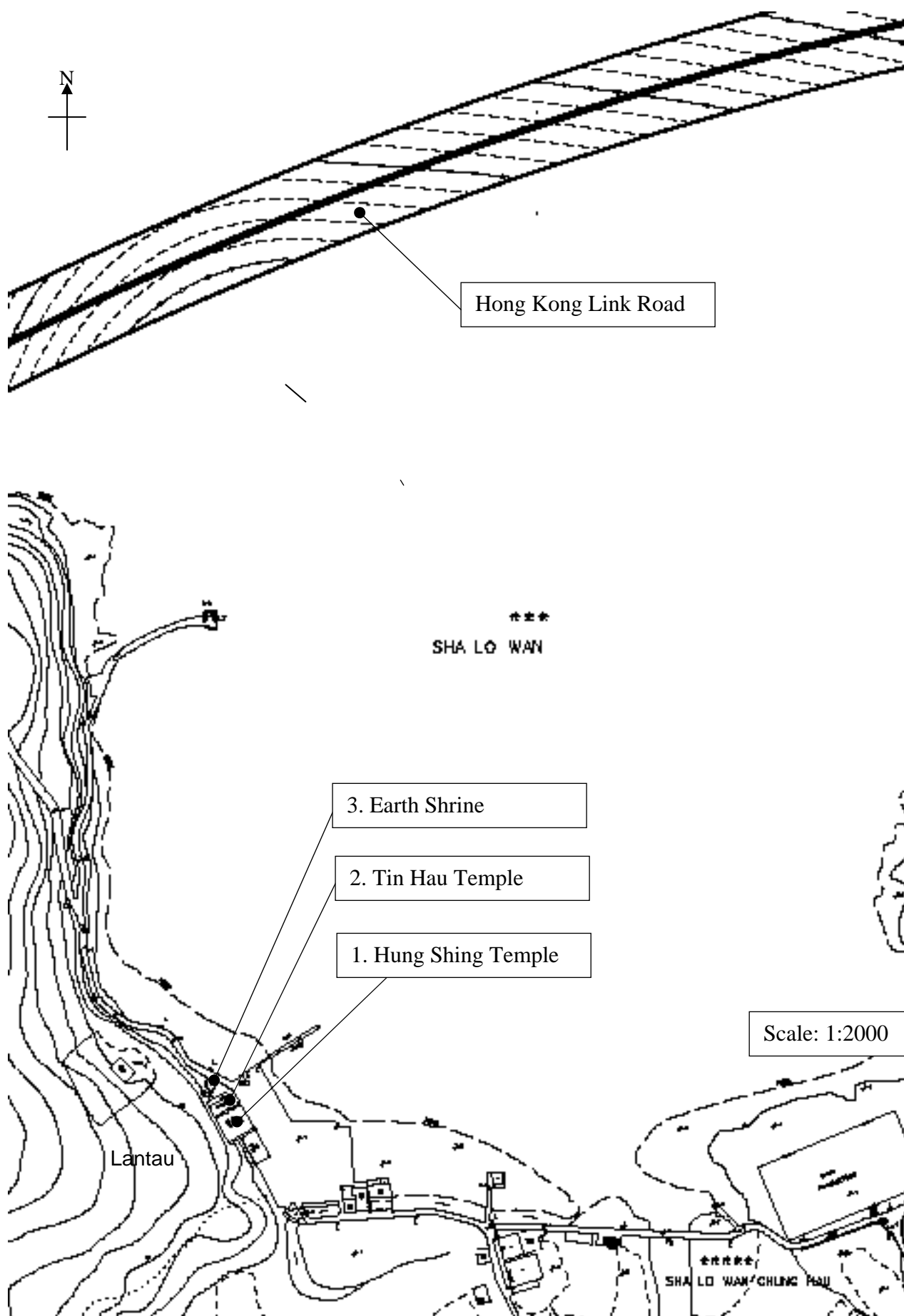
---

### **Images**

**Index**

Image 1	Location Map of Sha Lo Wan Temples
Image 2	Hung Shing Temple and Tin Hau Temple (Labelled as 1 and 2 respectively)
Image 3	The Door and Roof Motifs of Hung Shing Temple
Image 4	The Cast Iron Bell at Hung Shing Temple
Image 5	Earth Shrine (labelled as 3)
Image 6	Chi Wen in Tin Hau Temple
Image 7	Sha Lo Wan Grave
Image 8	Geophysical Surveys
Image 9	Geology of the Study Area
Image 10	Shallow Water of the Study Area
Image 11	Shoal Waters to the West of Chep Lap Kok
Image 12	Borehole Data for North Lantau and Tung Chung
Image 13	Borehole ESC 17 located off North-west Lantau
Image 14	Predominant Wind Directions for the Hong Kong Area West of Lantau
Image 15	The Early Holocene for the Landscape North of Lantau
Image 16	Artist's representation of a Tang Dynasty tower ship (left) and Song Dynasty war junk
Image 17	Portion of 1856 French chart showing location of Tuen Muen in relation to the study area
Image 18	Artist's representation of a Yuan Dynasty war junk impaled on wooden stakes
Image 19	Pirate war junks of the early 19 <sup>th</sup> century C.E. in the Pearl River region
Image 20	Land Reclamation from Northern Shore of Lantau to East of Tung Chung
Image 21	Shipwreck Record of UK Naval Hydrographic Office prior to 1997
Image 22	Submerged Cultural Heritage in the 1990 Chart of the Outer Approaches to Hong Kong
Image 23	Marine Geophysical Surveys
Image 24	Area not surveyed on the eastern shore of CLK Island, circled in red. (12-40: Figure 2.5)
Image 25	Organic Masking for the Study Area
Image 26	Description of areas for results of Marine Geophysical Surveys
Image 27	Location of dive targets and transects

**Image 1**      **Location Map of Sha Lo Wan Temples**



**Image 2**      **Hung Shing Temple and Tin Hau Temple (Labelled as 1 and 2 respectively)**



**Image 3**      **The Door and Roof Motifs of Hung Shing Temple**





**Image 4**      **The Cast Iron Bell at Hung Shing Temple**



**Image 5**      **Earth Shrine (labelled as 3)**





**Image 6**      **Chi Wen in Tin Hau Temple**

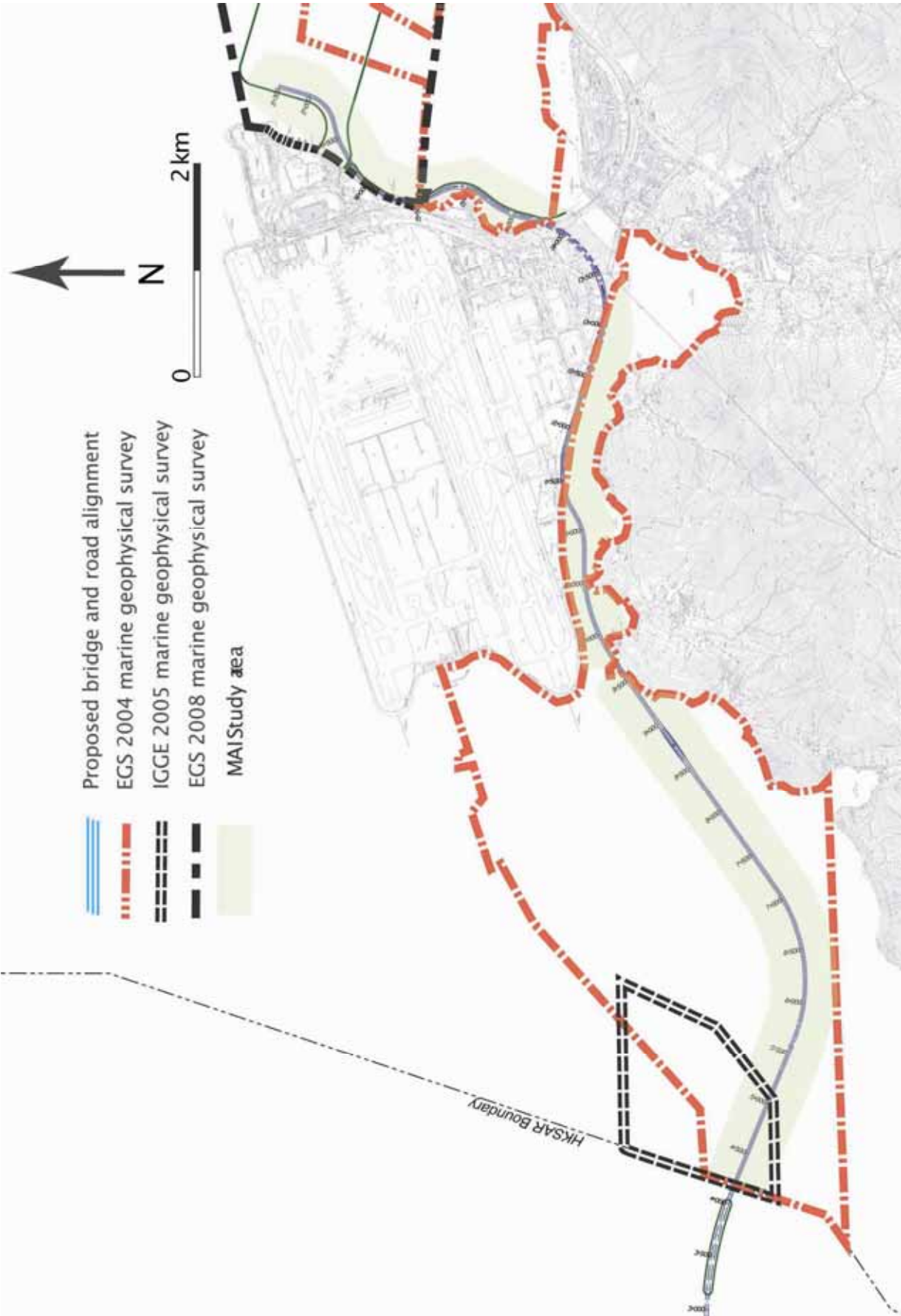




**Image 7**      **Sha Lo Wan Grave**



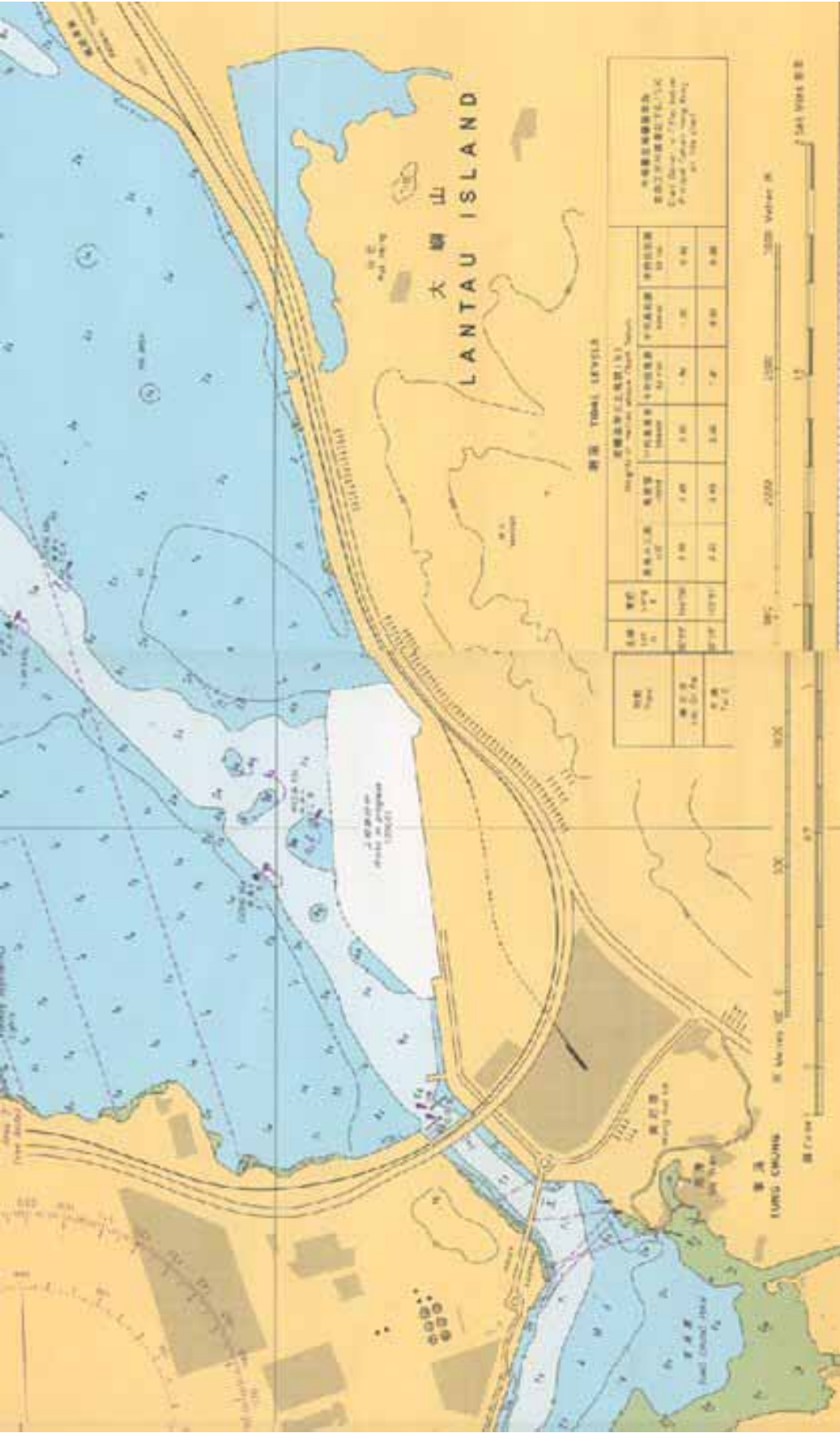
Image 8      Geophysical Surveys

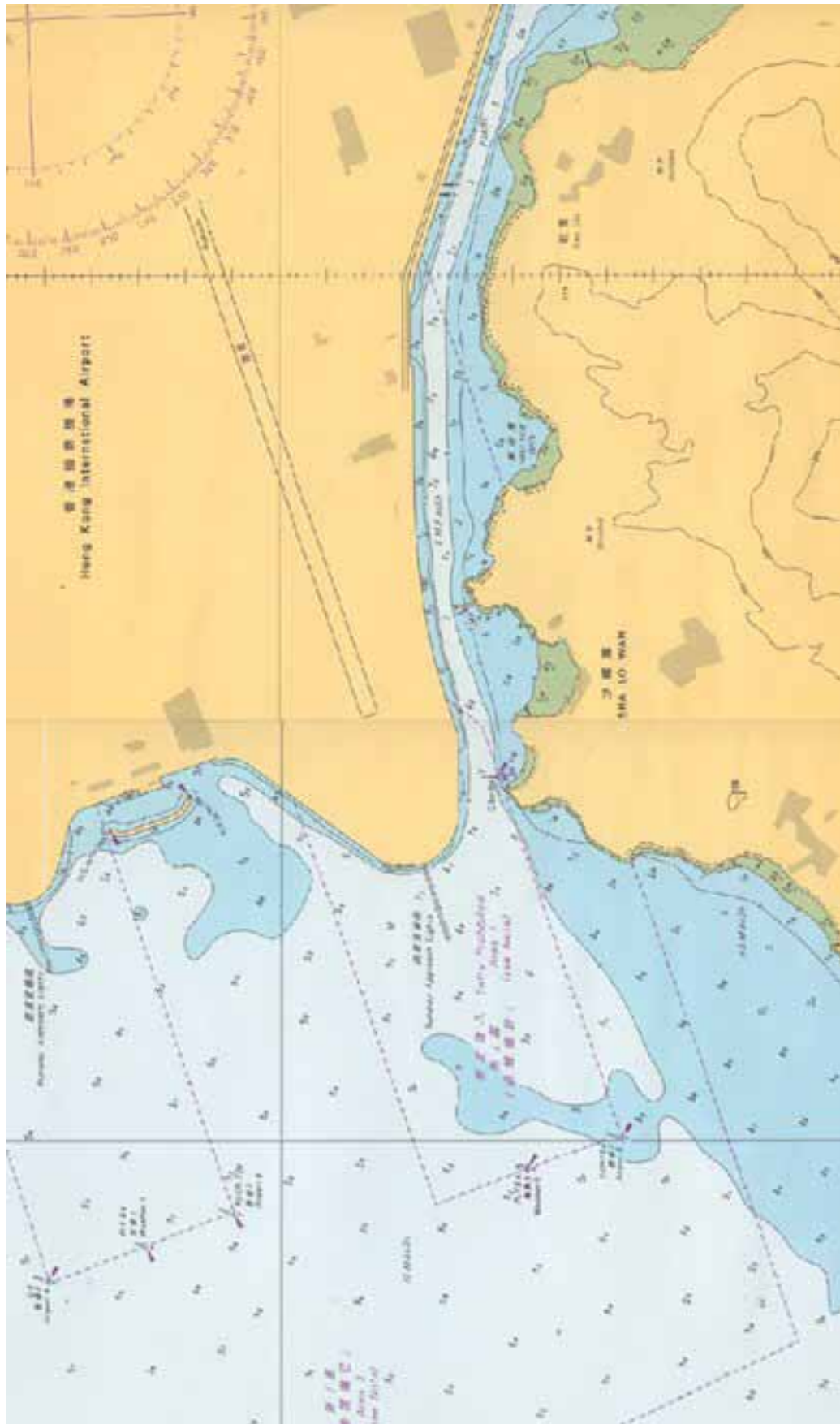


**Image 9      Geology of the Study Area**



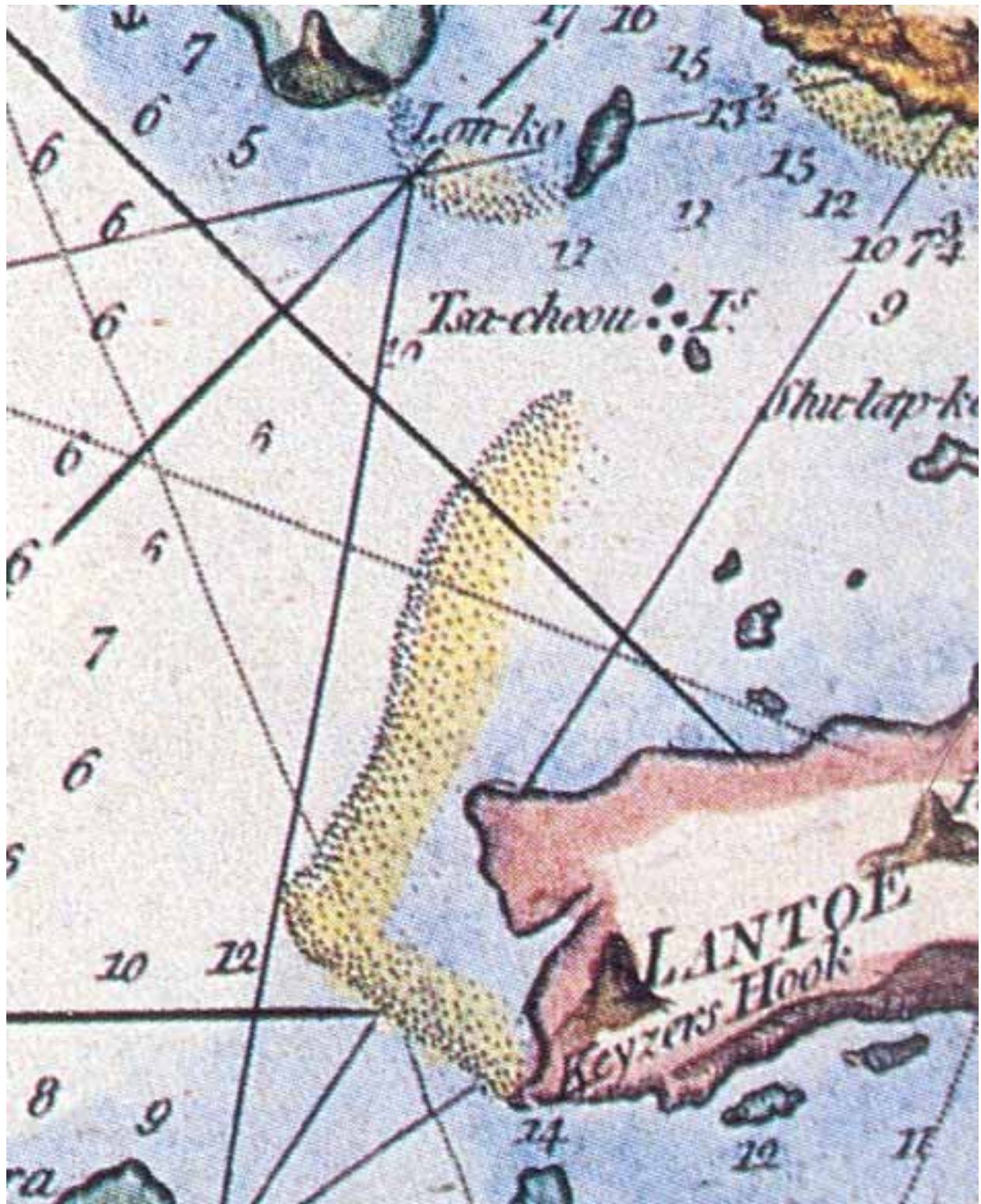
Image 10A      Shallow Water of the Study Area (East of CLK Island)



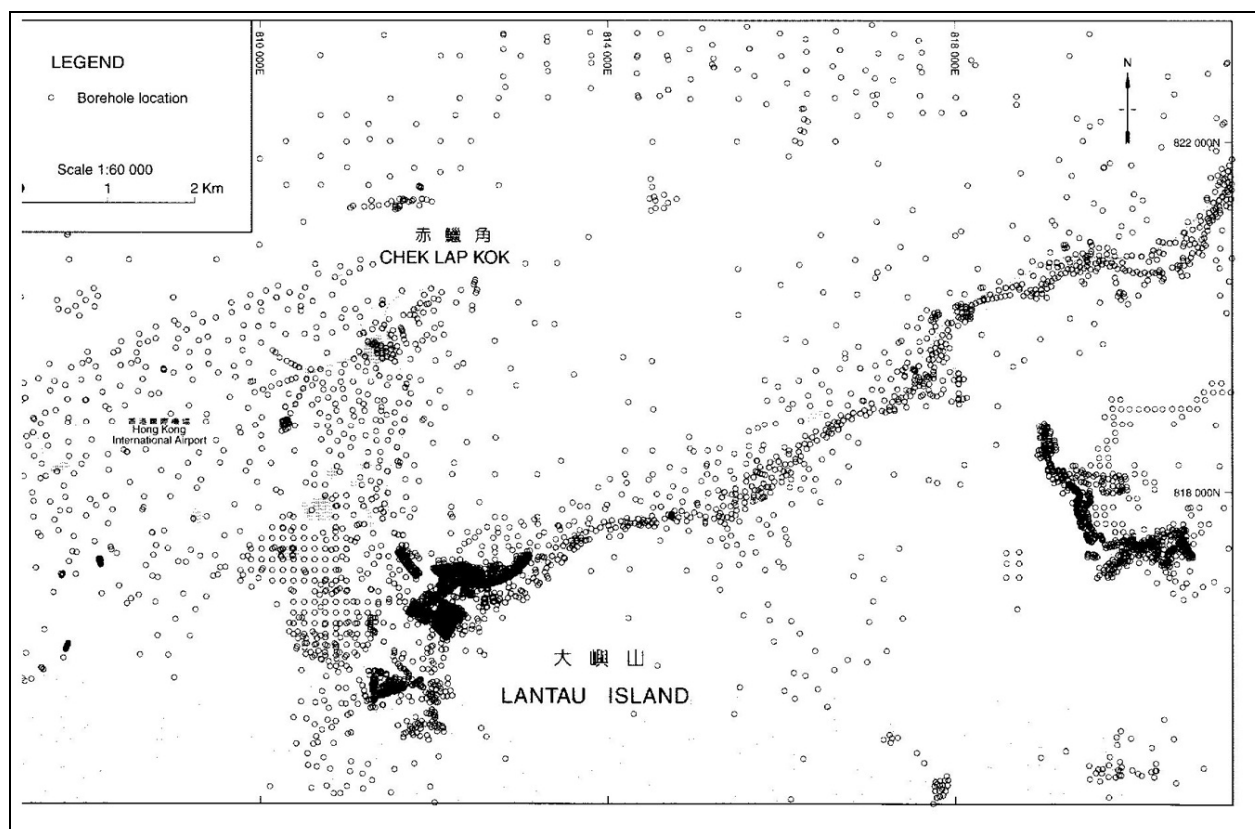
**Image 10B      Shallow Water of the Study Area (West of CLK Island)**



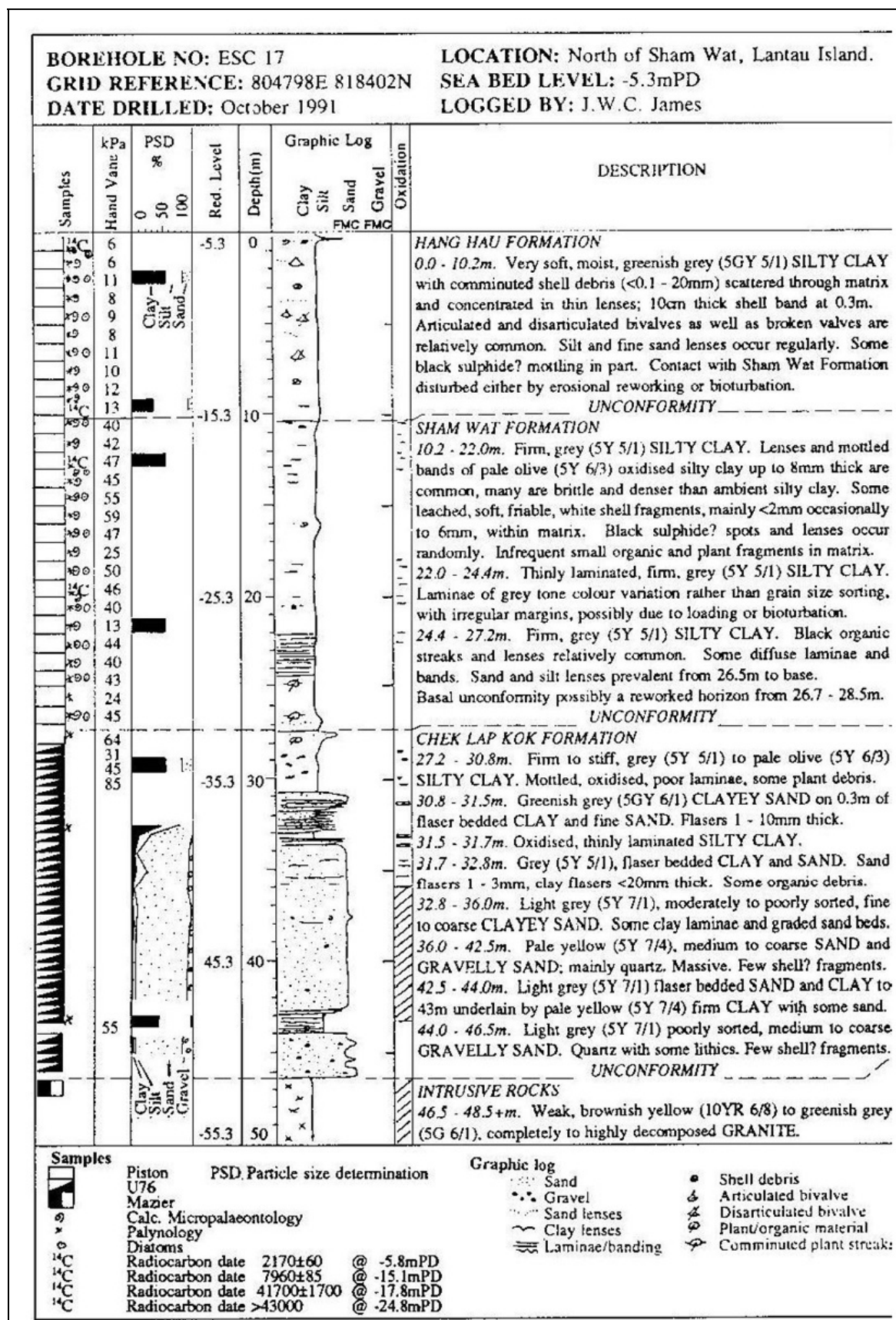
**Image 11** Shoal Waters to the West of Chep Lap Kok

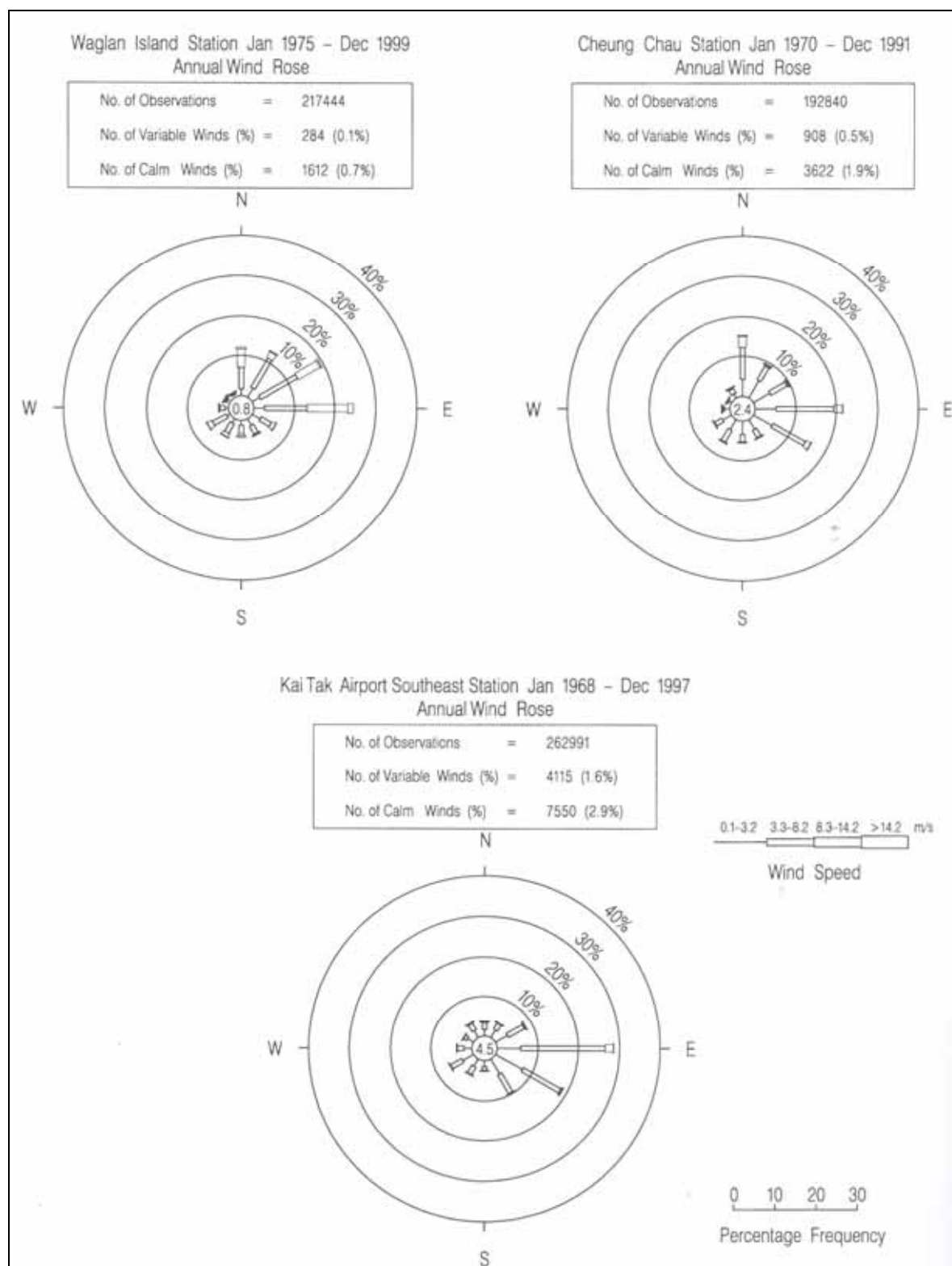




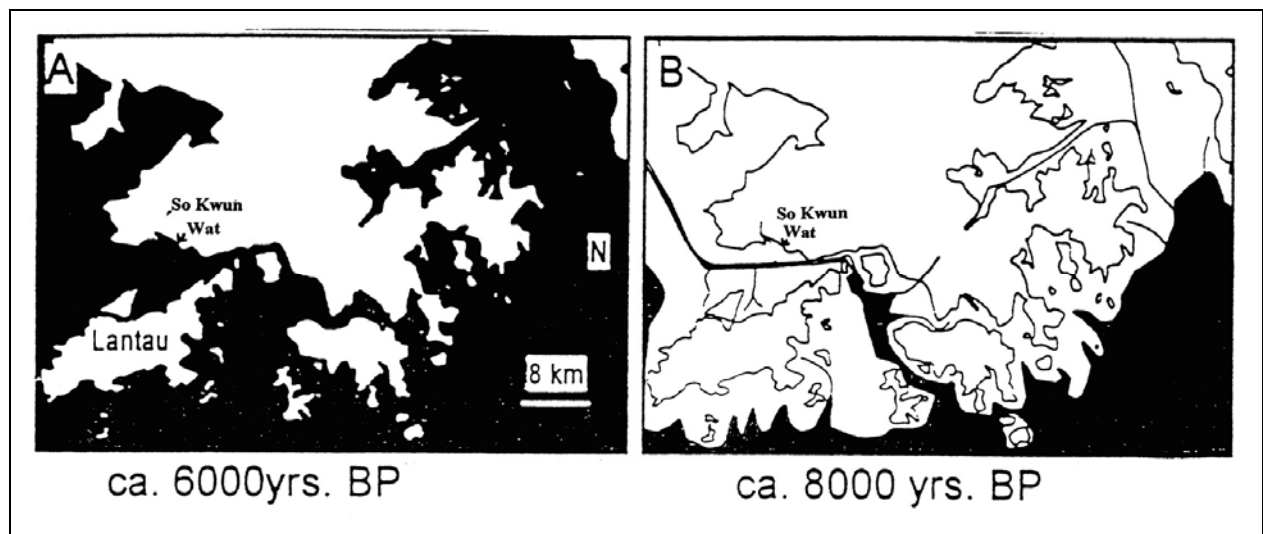
**Image 12      Borehole Data for North Lantau and Tung Chung**

**Image 13**      **Borehole ESC 17 located off North-west Lantau**

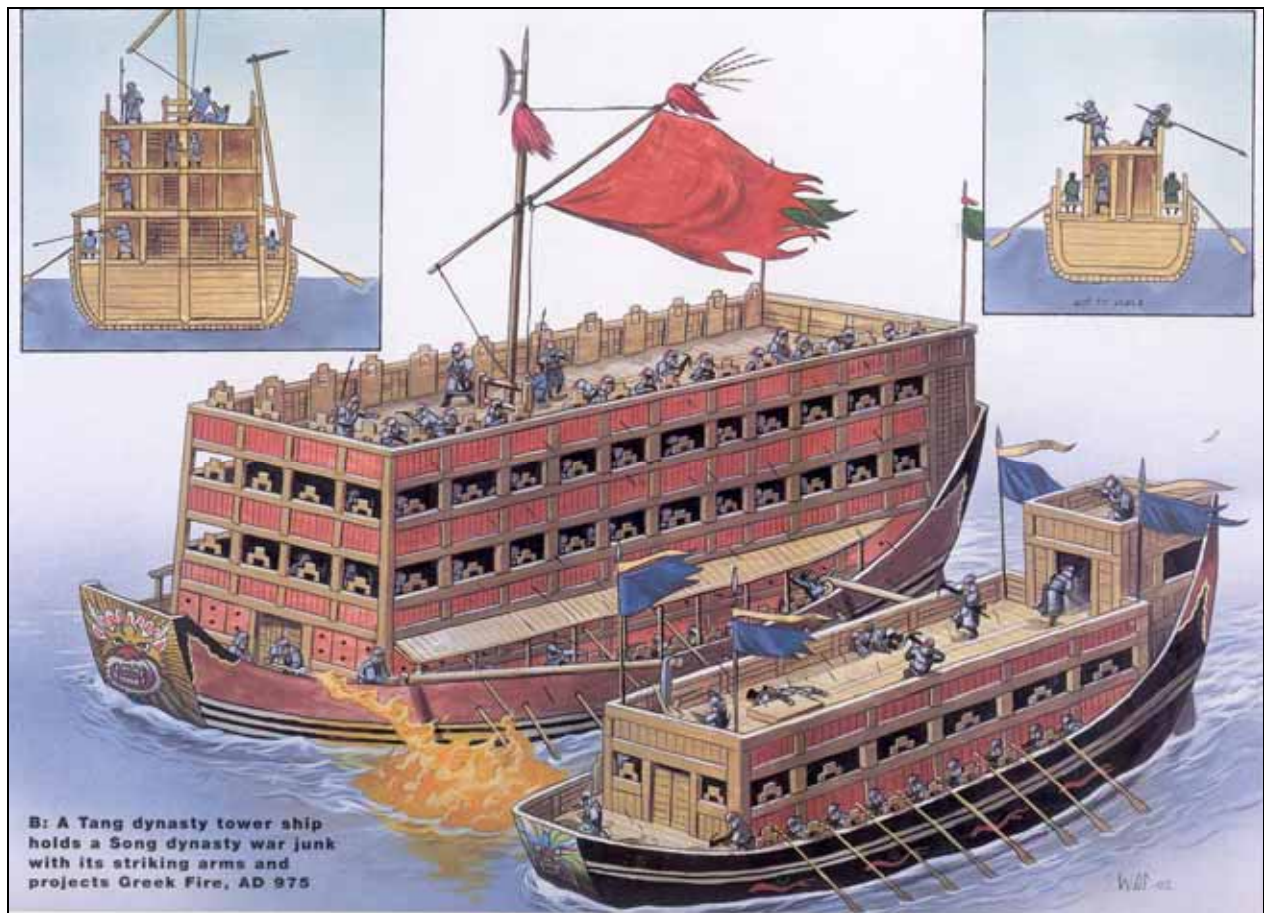


**Image 14**      **Predominant Wind Directions for the Hong Kong Area West of Lantau**



**Image 15      The Early Holocene for the Landscape North of Lantau**

**Image 16**      **Artist's representation of a Tang Dynasty tower ship (left) and Song Dynasty war junk**

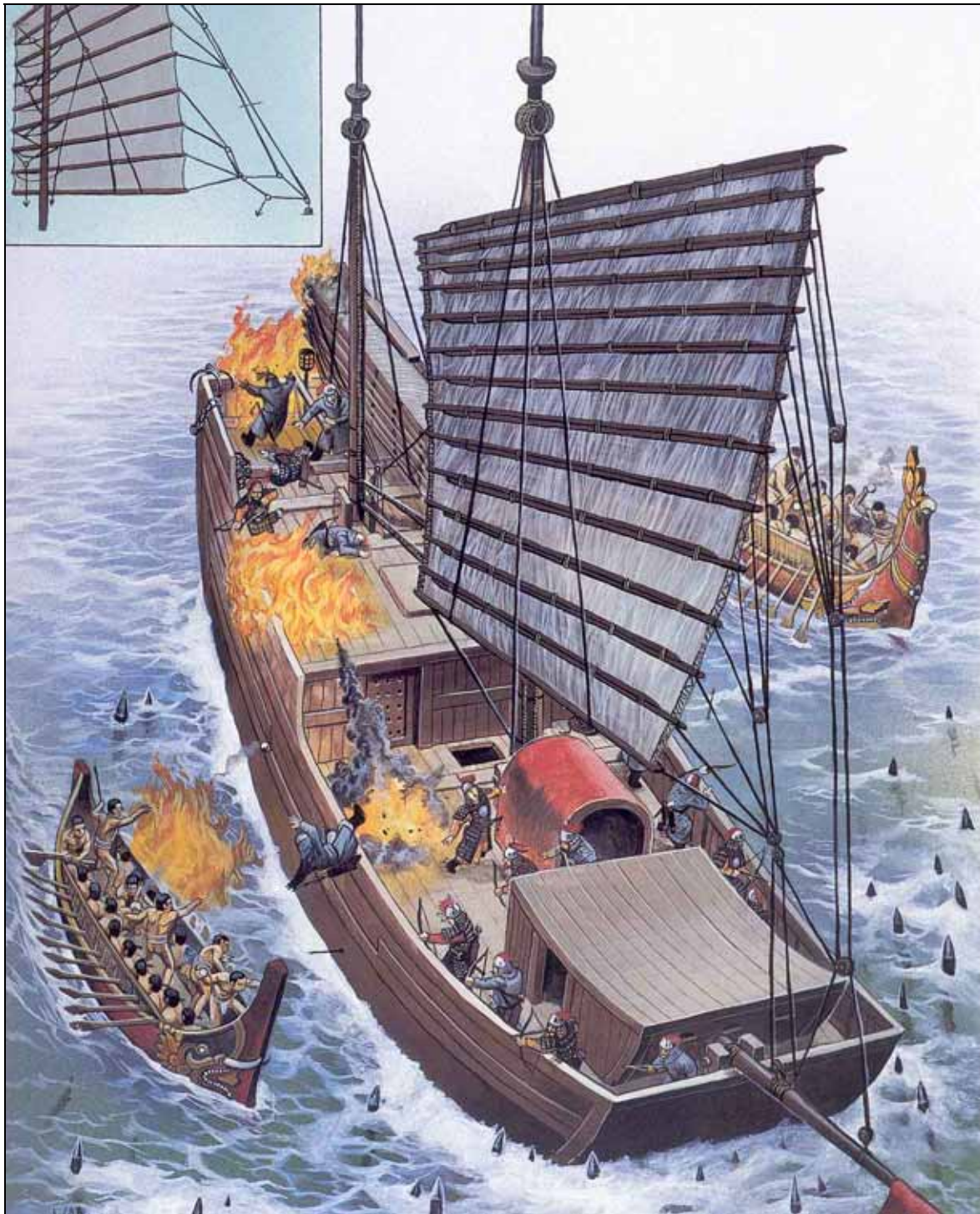


**Image 17** Portion of 1856 French chart showing location of Tuen Muen in relation to the study area



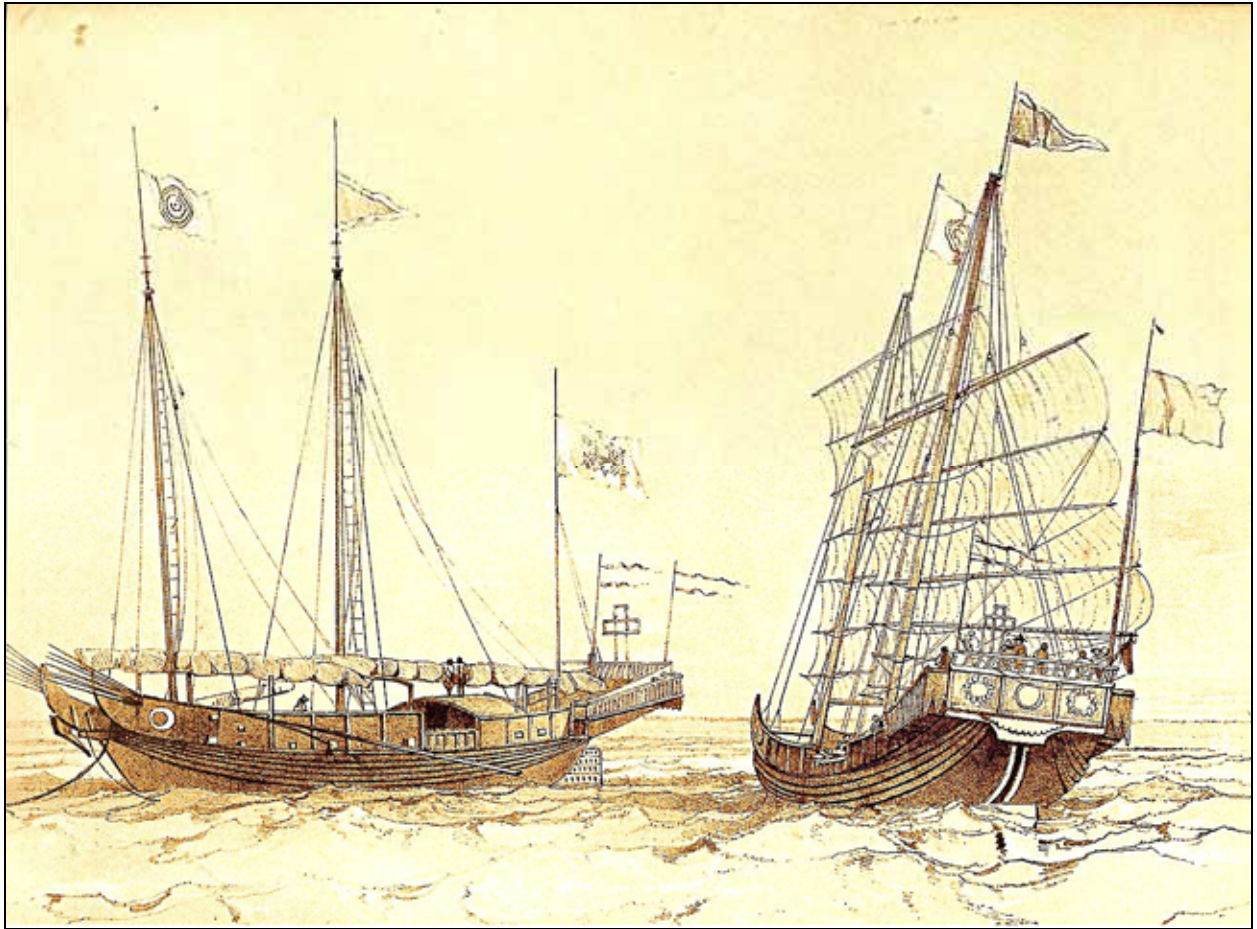


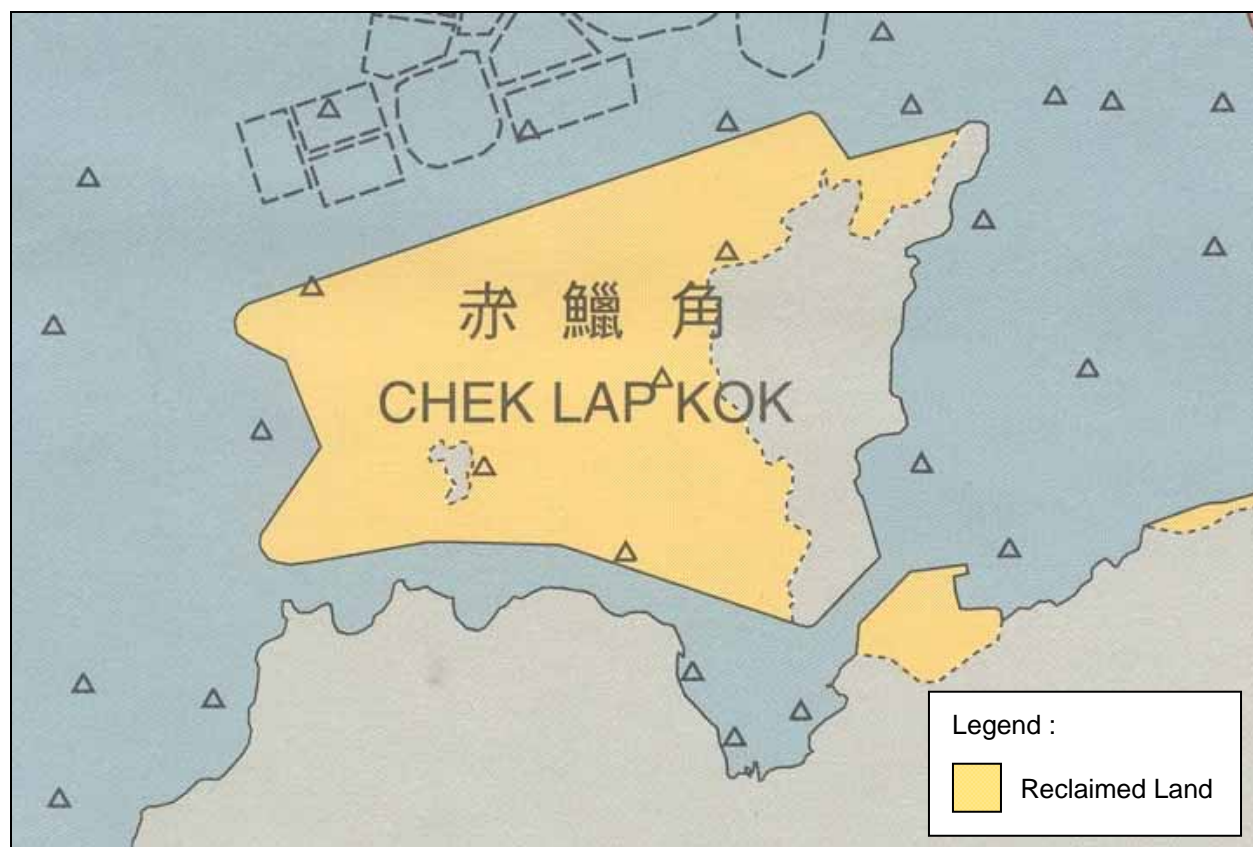
**Image 18**      **Artist's representation of a Yuan Dynasty war junk impaled on wooden stakes**

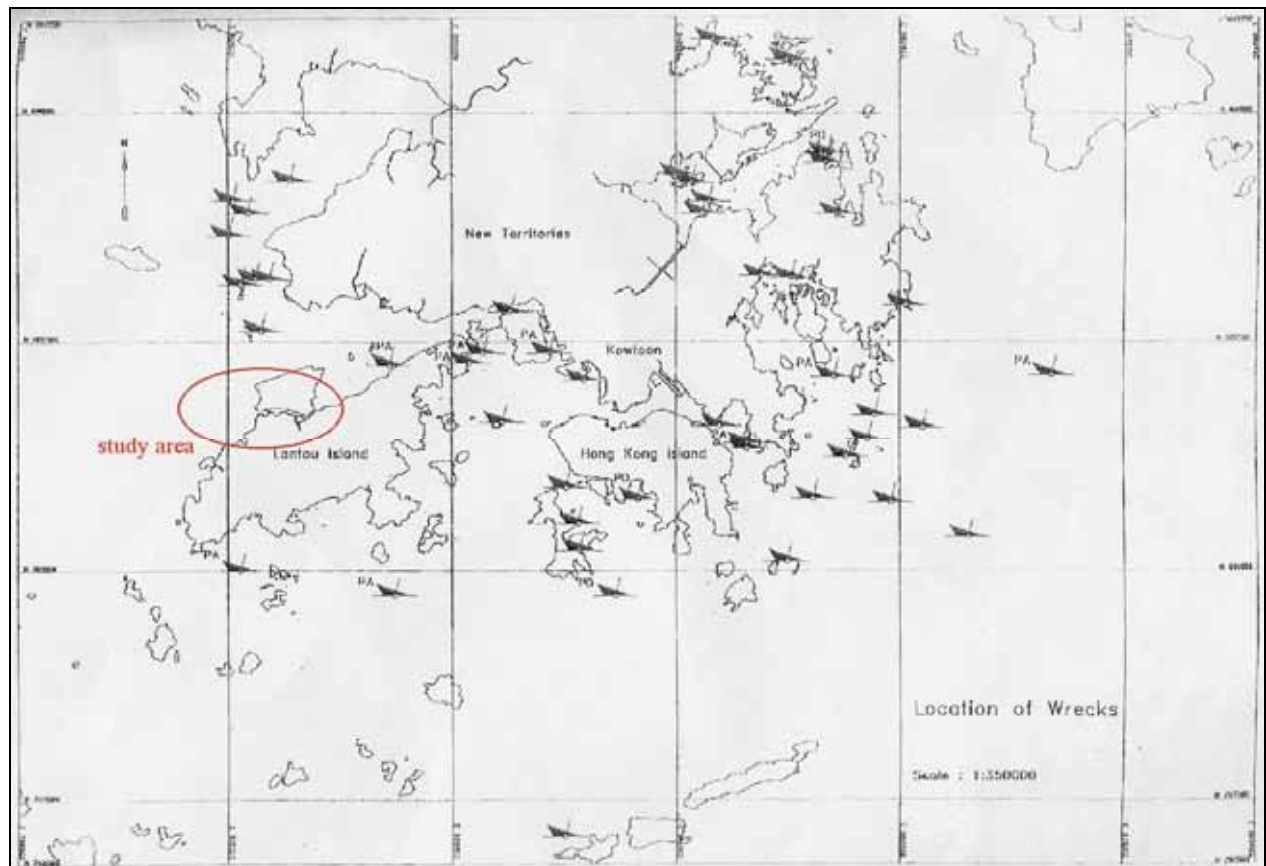




**Image 19**      **Pirate war junks of the early 19<sup>th</sup> century C.E. in the Pearl River region**



**Image 20** Land Reclamation from Northern Chore of Lantau to East of Tung Chung

**Image 21 Shipwreck Record of UK Naval Hydrographic Office prior to 1997**

**Image 22 Submerged Cultural Heritage in the 1990 Chart of the Outer Approaches to Hong Kong**

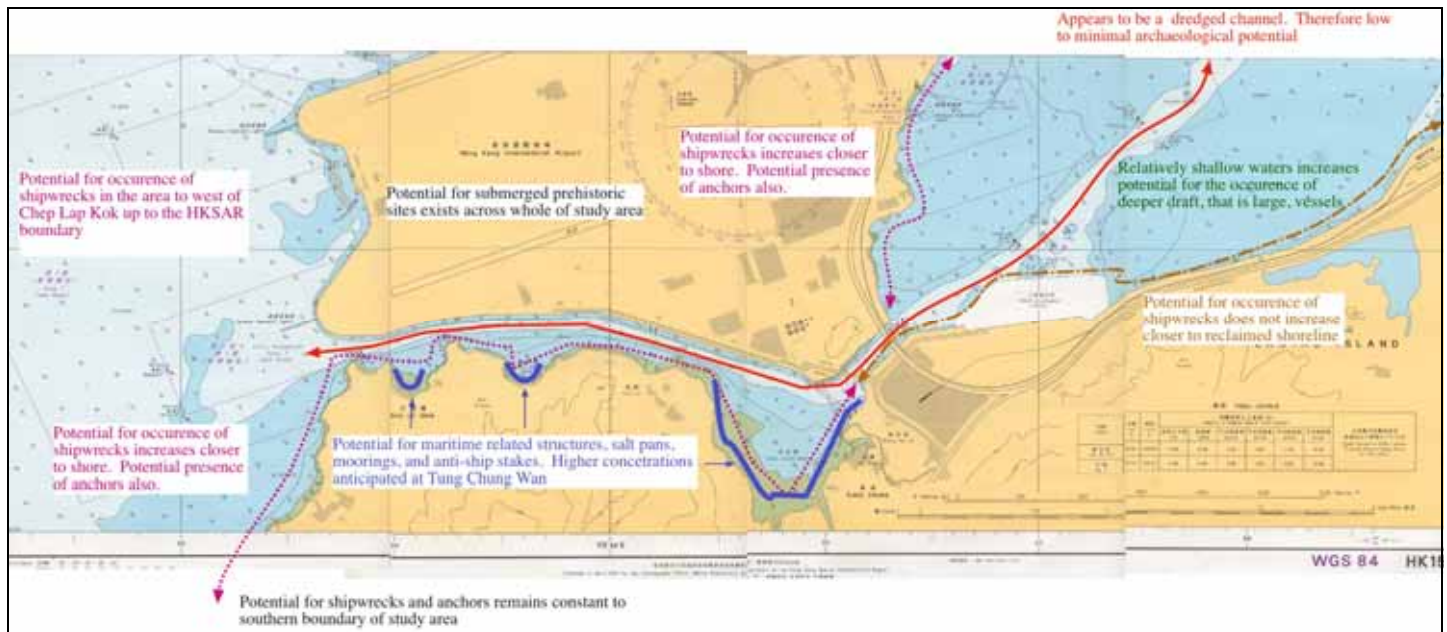
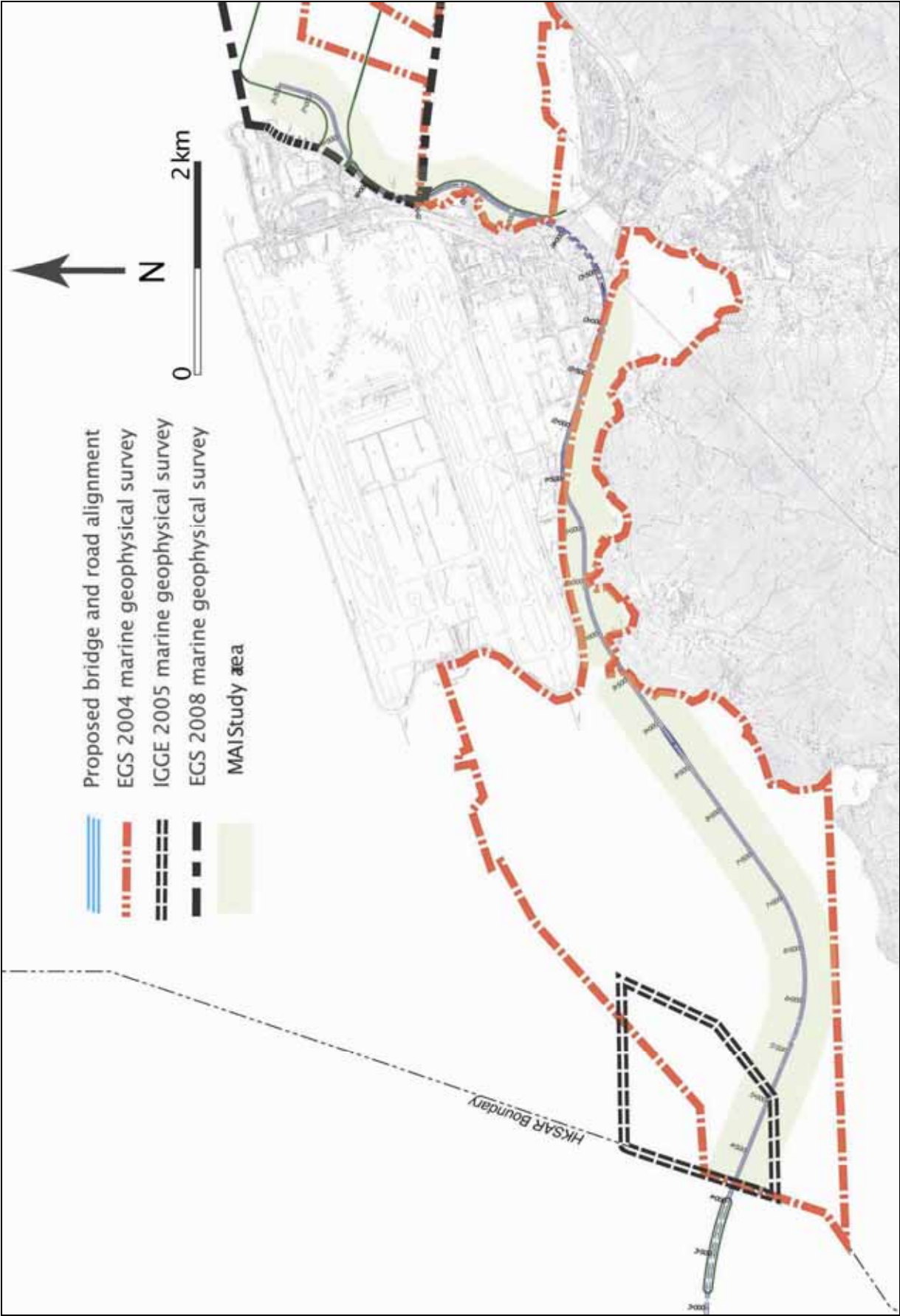
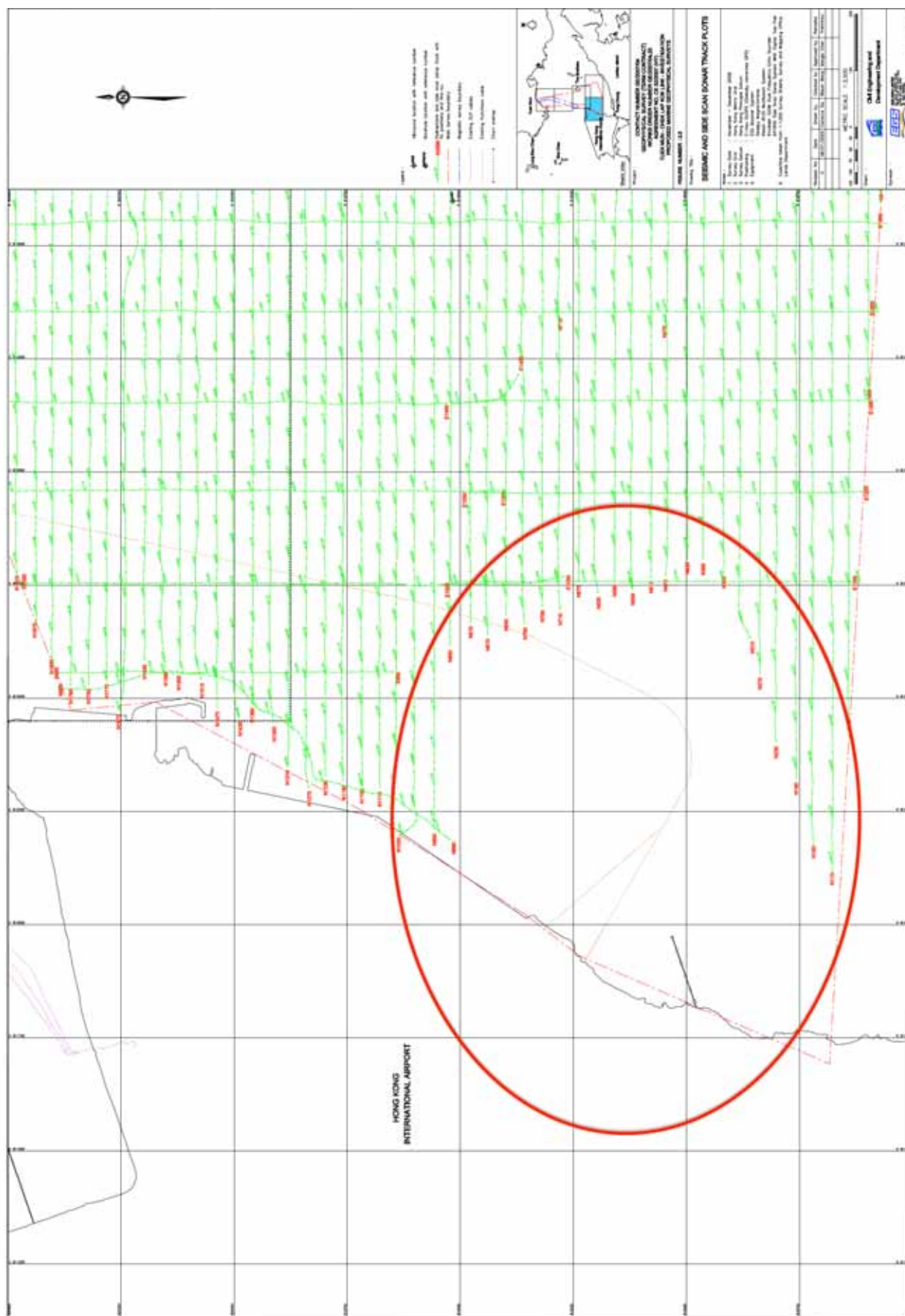


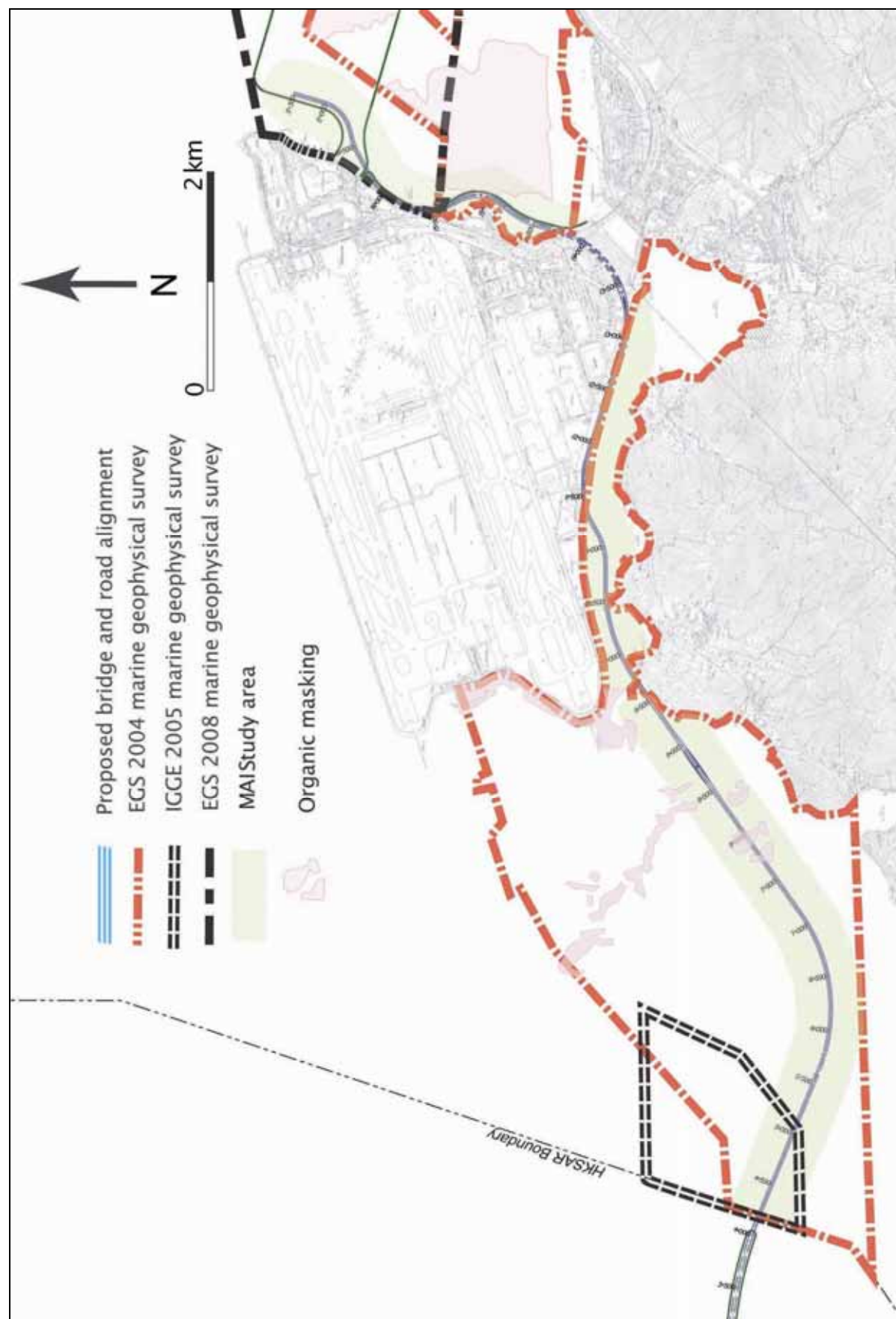


Image 23 Marine Geophysical Surveys



**Image 24** Area not surveyed on the eastern shore of CLK Island, circled in red. [12-40]



**Image 25      Organic Masking for the Study Area**



**Image 26**      **Description of areas for results of Marine Geophysical Surveys**

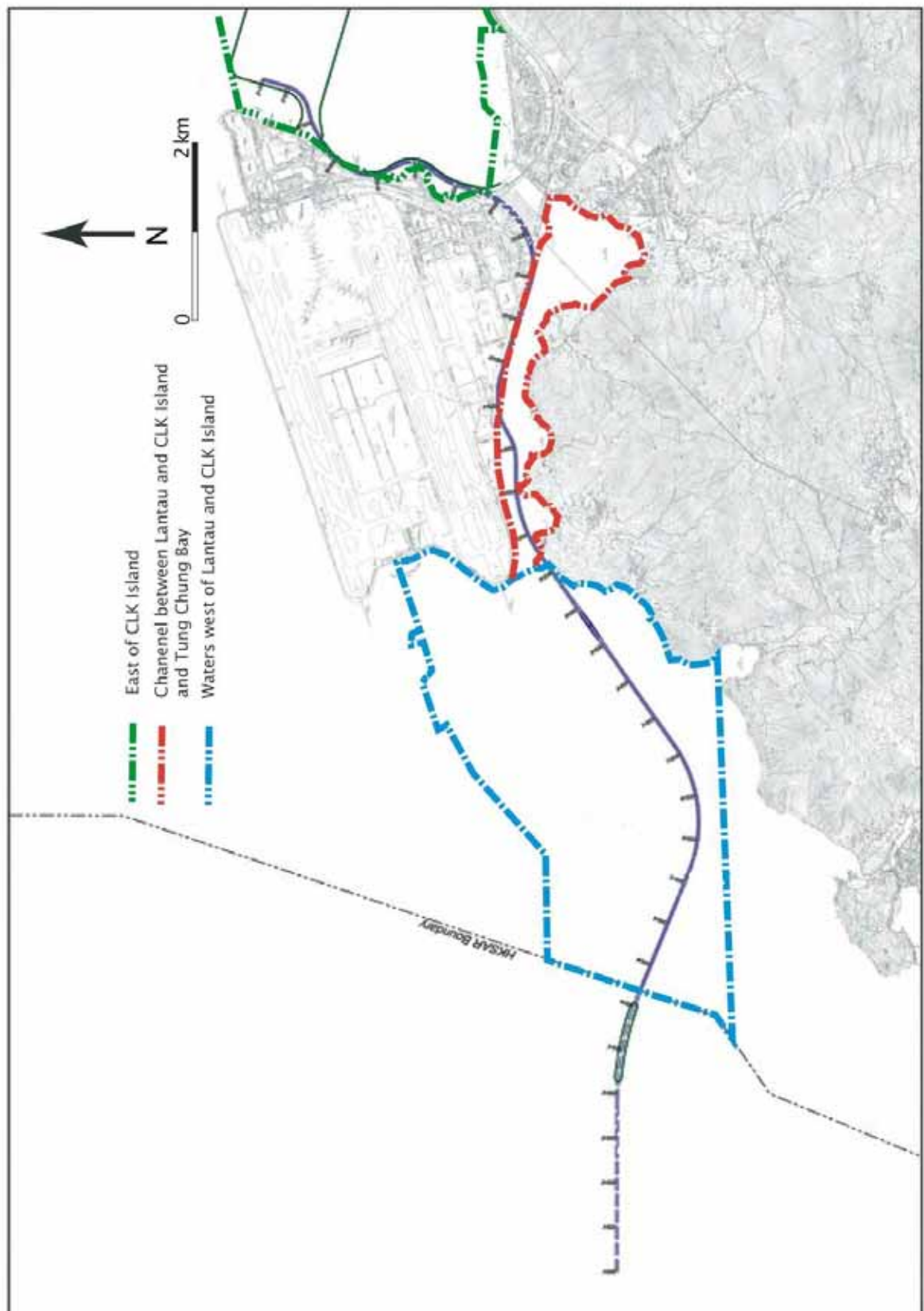


Image 27      Location of dive targets and transects

