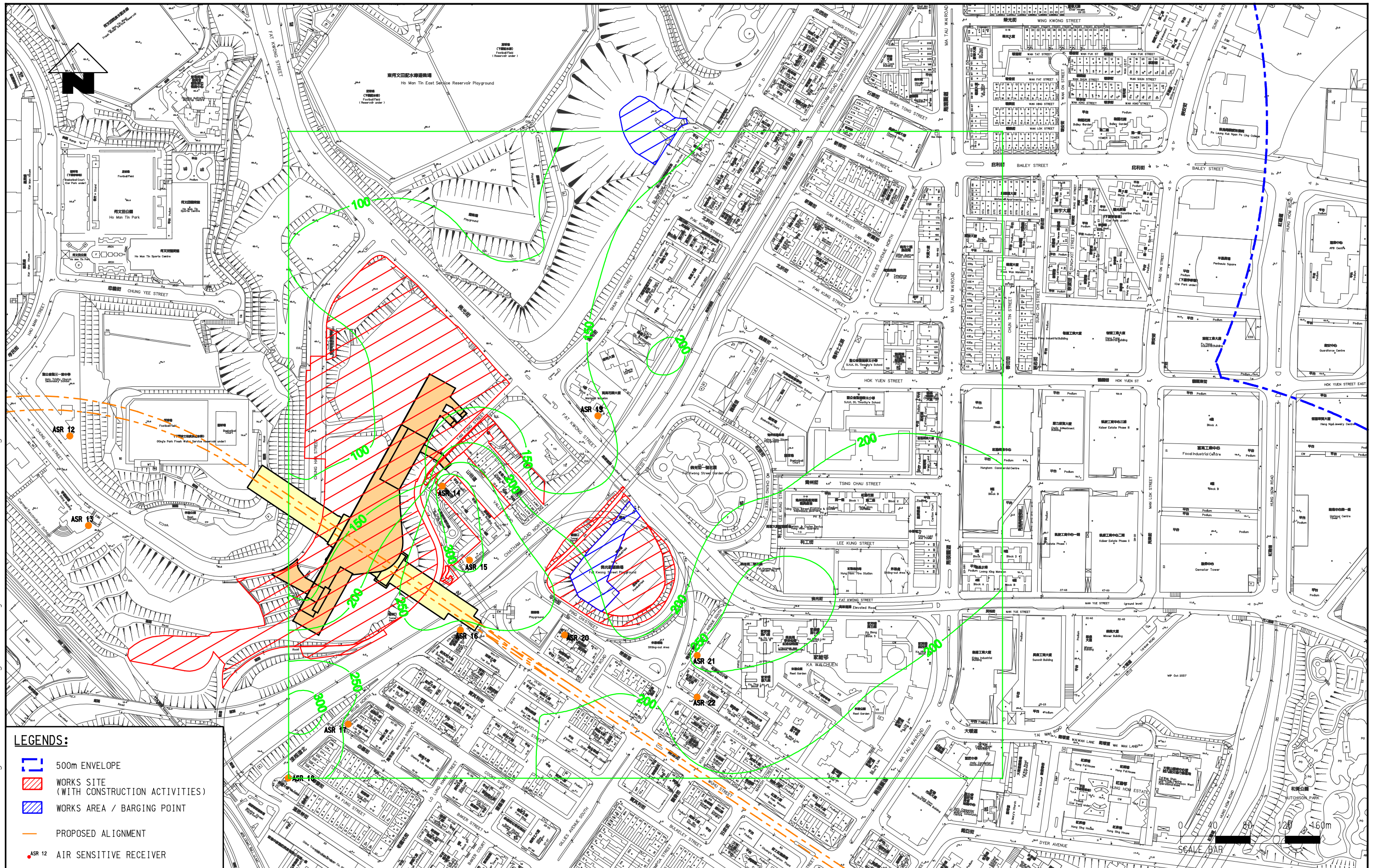


11/6/2010 2:41:11 K:\9135 Kwun Tong Line Ext\drawing\Air Quality\Contour\Rev1\_20100604\6.18.dgn



**LEGENDS:**

- 500m ENVELOPE
- WORKS SITE (WITH CONSTRUCTION ACTIVITIES)
- WORKS AREA / BARGING POINT
- PROPOSED ALIGNMENT
- ASR 12 AIR SENSITIVE RECEIVER

<p>Meinhardt Infrastructure and Environment Limited 邁達基建環保工程顧問有限公司</p>		<p>MTR Corporation Limited Kwun Tong Line Extension Contract No. NEX/2207 Environmental Impact Assessment</p>
--	--	---

**HOURLY AVERAGED CUMULATIVE TSP CONCENTRATION IN  $\mu\text{gm}^{-3}$  OF TIER 1 AT 10M ABOVE GROUND LEVEL NEAR HOM STATION (AQO:  $500 \mu\text{gm}^{-3}$ )**

Figure:	6.18	Rev:	-
Scale:	1 : 3000 (A3)		