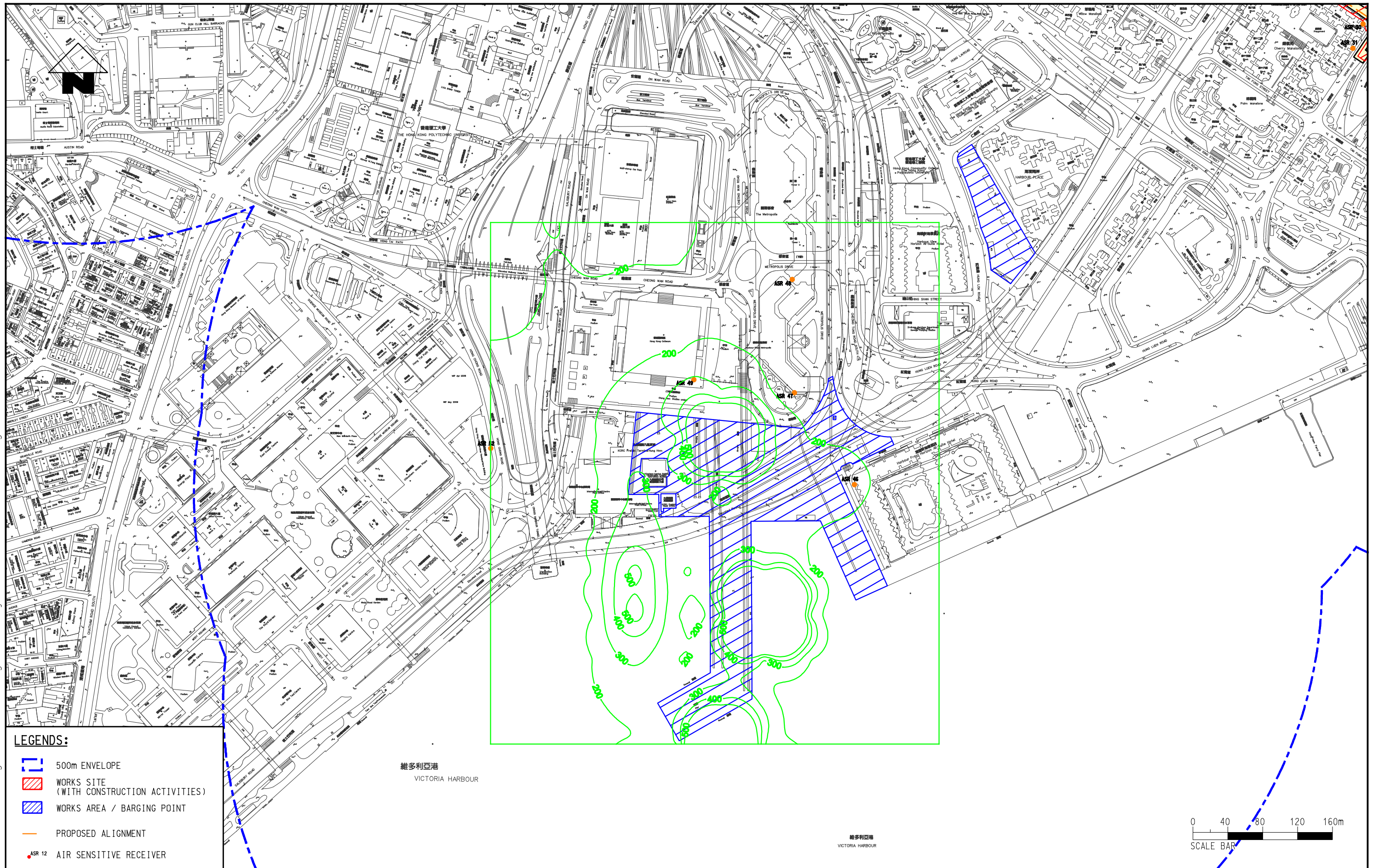
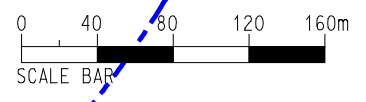


11/6/2010 3:10:35 K:\9135 Kwon Tong Line Ext\drawing\Air Quality_Contour_Rev1_20100604\6.22.dgn



- LEGENDS:**
- 500m ENVELOPE
 - WORKS SITE (WITH CONSTRUCTION ACTIVITIES)
 - WORKS AREA / BARGING POINT
 - PROPOSED ALIGNMENT
 - ASR 12 AIR SENSITIVE RECEIVER



HOURLY AVERAGED CUMULATIVE TSP CONCENTRATION IN $\mu\text{g}\text{m}^{-3}$ OF TIER 2 AT 1.5M ABOVE GROUND LEVEL NEAR FINGER PIER (AQO: $500 \mu\text{g}\text{m}^{-3}$)

Figure:	6.22	Rev:	-
Scale:	1 : 4000 (A3)		