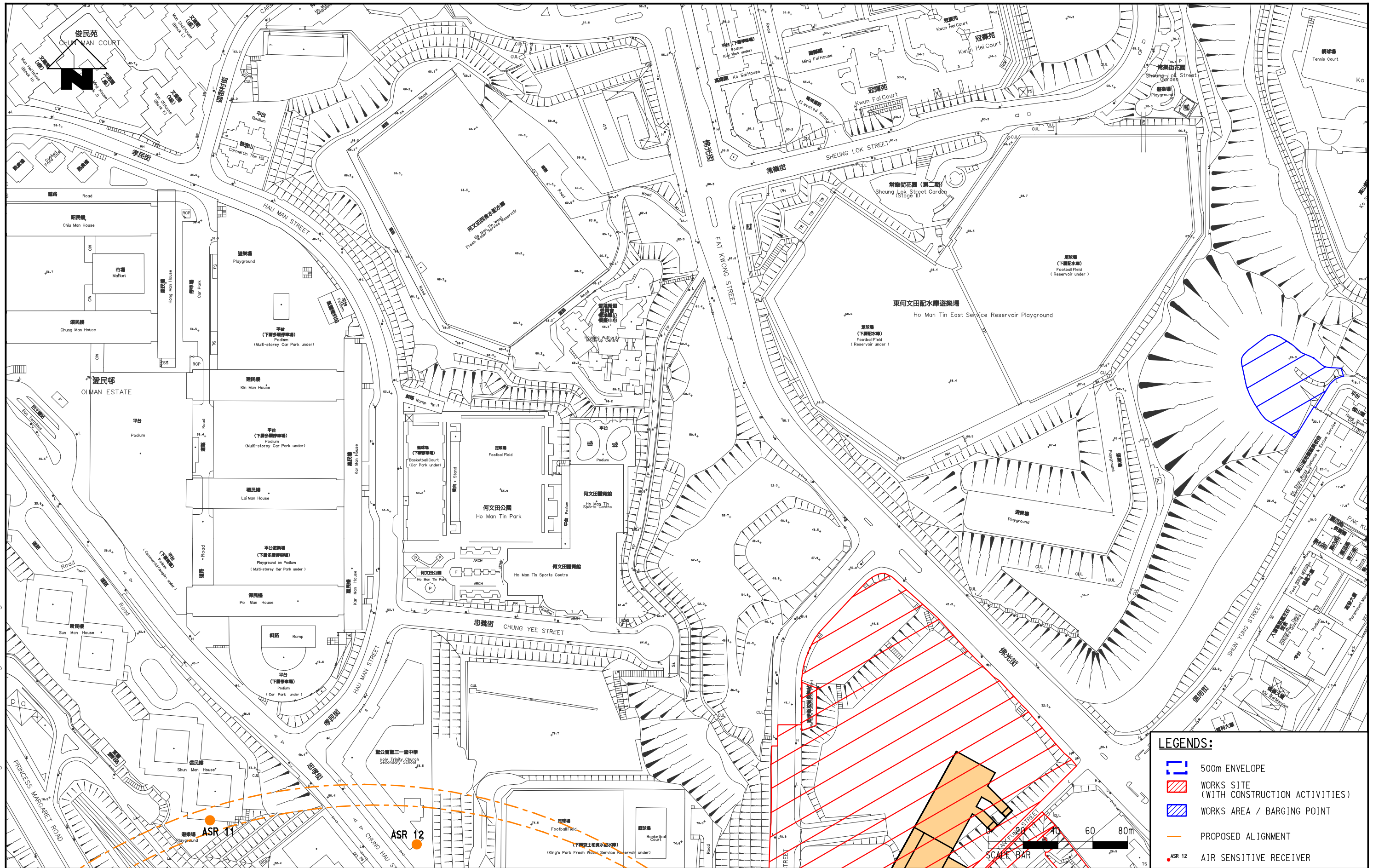


3/2/2010 5:22:09 PM
 FILENAME: K:\9135 Kwon Tong Line Ext\drawing\ASR\6.4.dgn



LEGENDS:

- 500m ENVELOPE
- WORKS SITE (WITH CONSTRUCTION ACTIVITIES)
- WORKS AREA / BARGING POINT
- PROPOSED ALIGNMENT
- ASR 12 AIR SENSITIVE RECEIVER



MTR Corporation Limited
 Kwon Tong Line Extension
 Contract No. NEX/2207
 Environmental Impact Assessment

REPRESENTATIVE AIR SENSITIVE RECEIVERS SHEET 4 OF 9

Figure:	6.4	Rev:	-
Scale:	1 : 2000 (A3)		