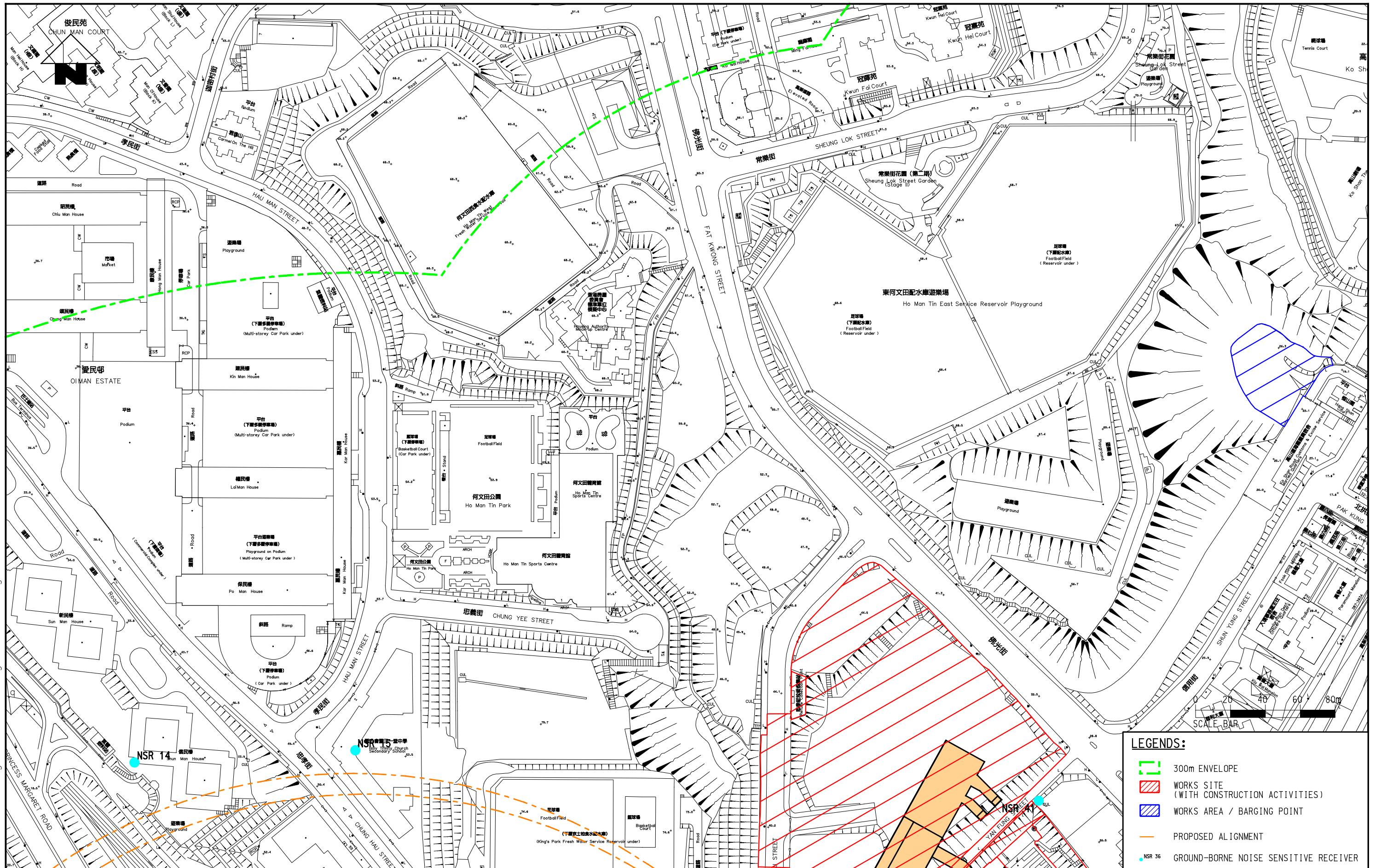


3/8/2010 4:33:17 PM
 FILENAME: K:\9135 Kwun Tong Line Ext\drawing\GB NOISE\8.4.dgn



LEGENDS:

- - - 300m ENVELOPE
- ▨ WORKS SITE (WITH CONSTRUCTION ACTIVITIES)
- ▨ WORKS AREA / BARGING POINT
- - - PROPOSED ALIGNMENT
- NSR 36 GROUND-BORNE NOISE SENSITIVE RECEIVER

Meinhardt Infrastructure and Environment Limited
 邁達基建築環保工程顧問有限公司

MTR Corporation Limited
 Kwun Tong Line Extension
 Contract No. NEX/2207
 Environmental Impact Assessment

REPRESENTATIVE GROUND-BORNE NOISE SENSITIVE RECEIVERS

SHEET 4 OF 7

Figure:	8.4	Rev:	-
Scale:	1 : 2000 (A3)		