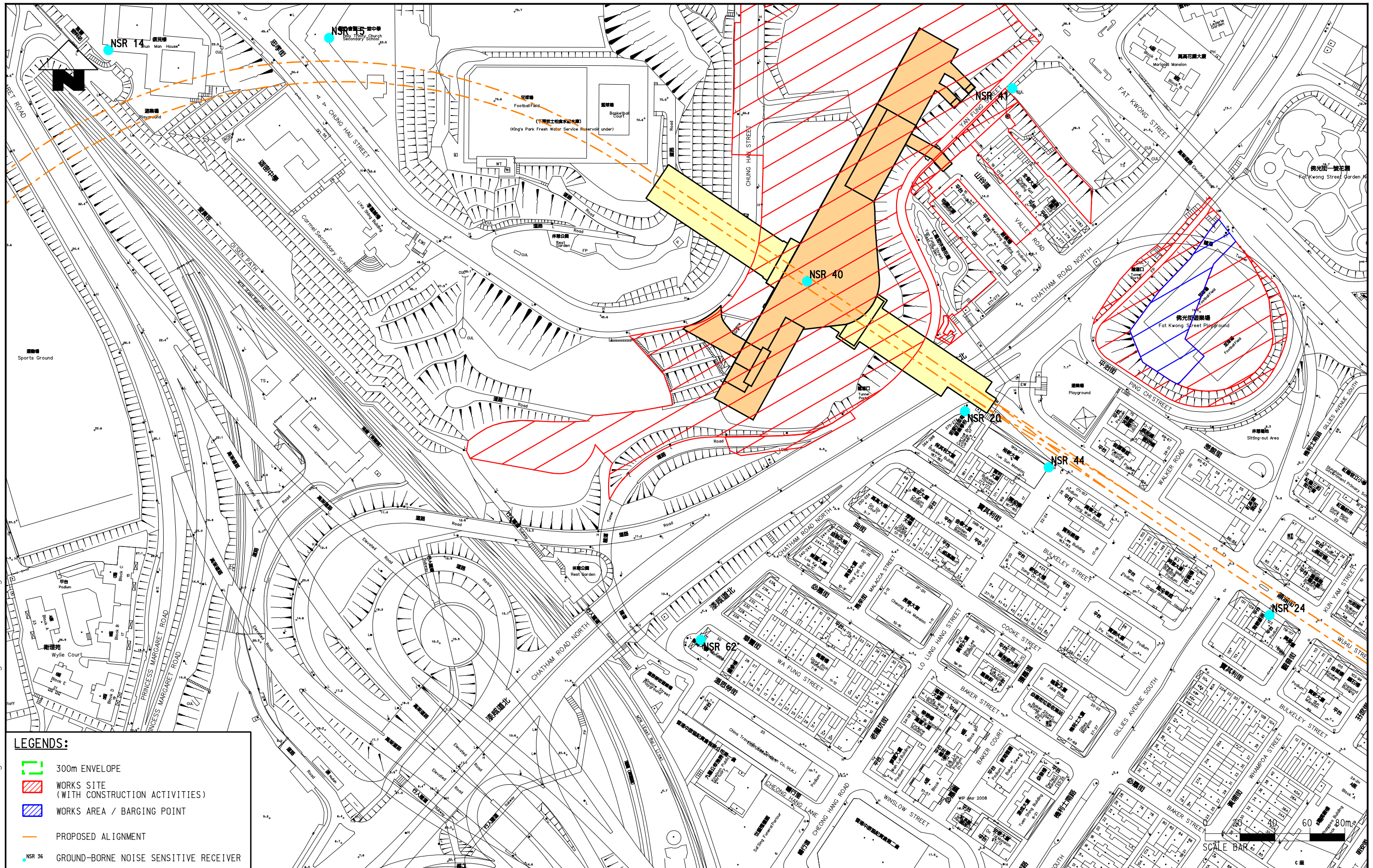


4/15/2010 10:37:11AM
K:\9135 Kwn Tong Line Ext\drawing\GB NOISE\8.5.dgn



LEGENDS:

- 300m ENVELOPE
- WORKS SITE (WITH CONSTRUCTION ACTIVITIES)
- WORKS AREA / BARGING POINT
- PROPOSED ALIGNMENT
- NSR 36 GROUND-BORNE NOISE SENSITIVE RECEIVER

MEINHARDT
Meinhardt Infrastructure and Environment Limited
邁達基建環保工程顧問有限公司

MTR
MTR Corporation Limited
Kwun Tong Line Extension
Contract No. NEX/2207
Environmental Impact Assessment

REPRESENTATIVE GROUND-BORNE NOISE SENSITIVE RECEIVERS
SHEET 5 OF 7

Figure:	8.5	Rev:	-
Scale:	1 : 2000 (A3)		