

KEY PLAN

LEGEND:

- PROPOSED SIL(E) ALIGNMENT
- PROPOSED WORKS SITE (GROUND LEVEL AND UNDERGROUND)
- PROPOSED WORKS SITE (UNDERGROUND)
- PROPOSED WORKS AREA (GROUND LEVEL)
- X AIR SENSITIVE RECEIVER

P7	JUN 10	MING	ISSUE TO MTRC & EPD	FY	AFK
P6	MAY 10	MING	ISSUE TO MTRC & EPD	FY	AFK
P5	DEC 09	MING	ISSUE TO MTRC & EPD	FY	AFK
P4	NOV 09	MING	ISSUE TO MTRC & EPD	EH	AFK
P3	OCT 09	MING	ISSUE TO MTRC	EH	AFK
P2	SEP 09	MING	ISSUE TO MTRC	EH	AFK
P1	APR 09	MING	ISSUE TO MTRC	EH	AFK

Rev Date Drawn Description Ch'kd/App'd

Client

20/F Two Landmark East
100 How Ming Street
Kwan Tong, Kowloon
Hong Kong
T +852 2828 5757
F +852 2827 1823
www.mottmac.com.hk

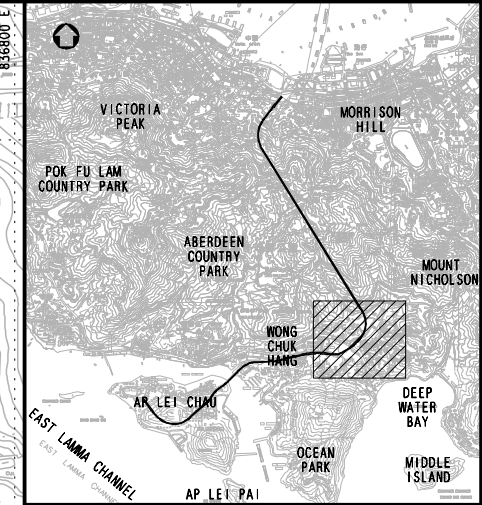
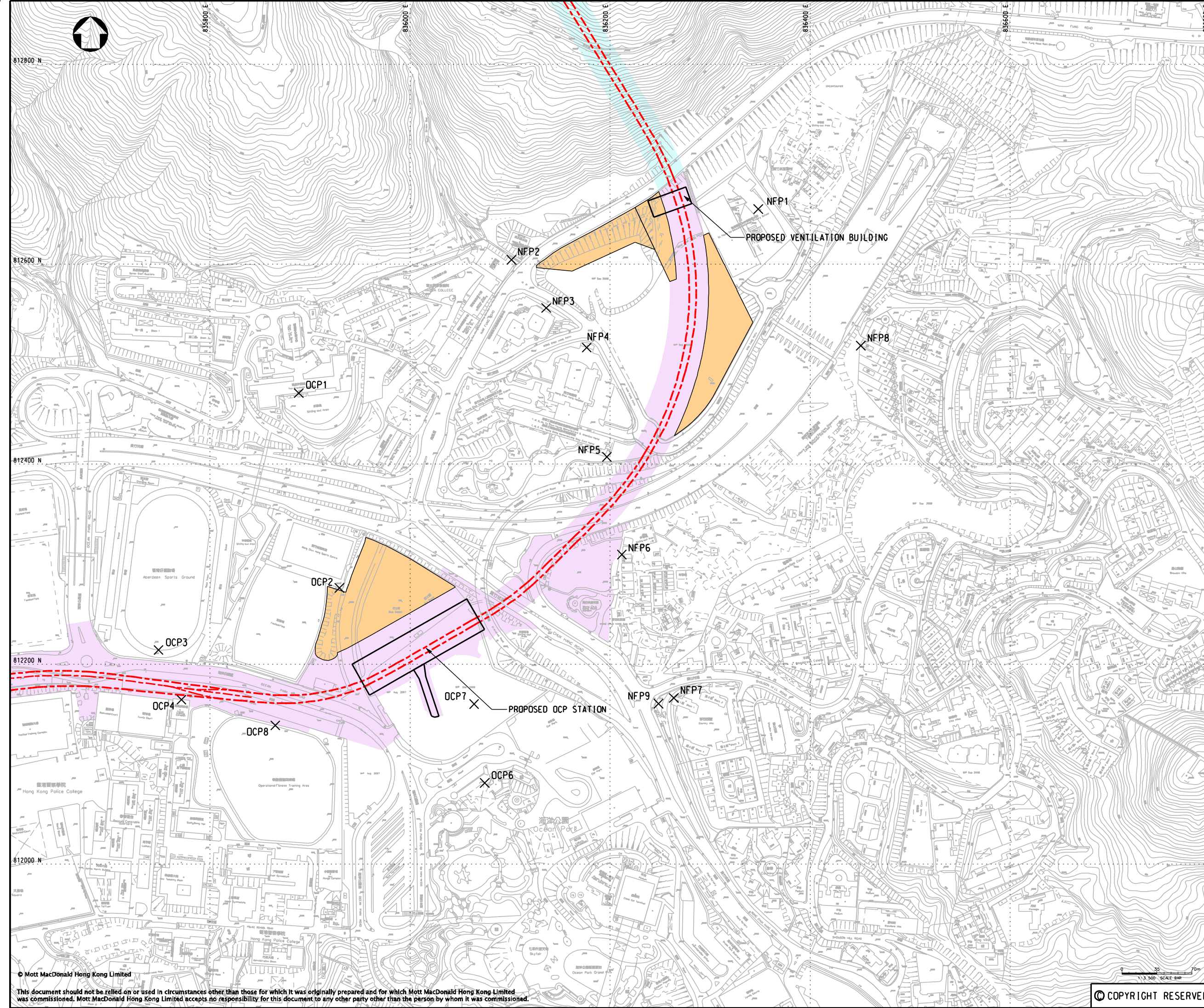
Project
CONSULTANCY AGREEMENT NO. NEX/2301
SOUTH ISLAND LINE (EAST)
ENVIRONMENTAL IMPACT ASSESSMENT

Title
LOCATIONS OF AIR SENSITIVE RECEIVERS
IN ADMIRALTY

Designed	EH	Eng.Chk.	FY
Drawn	MING	Coordination	FY
Dwg.Chk.	EH	Approved	AFK

Scale	Project	Status
1:3500@A3	248137	PRE

Drawing No. **FIGURE 10.2** Rev P7



KEY PLAN

LEGEND:

- PROPOSED SIL(E) ALIGNMENT
- PROPOSED WORKS SITE (GROUND LEVEL AND UNDERGROUND)
- PROPOSED WORKS SITE (UNDERGROUND)
- PROPOSED WORKS AREA (GROUND LEVEL)
- X AIR SENSITIVE RECEIVER

P6	JUN 10	MING	ISSUE TO MTRC & EPD	FY	AFK
P5	MAY 10	MING	ISSUE TO MTRC & EPD	FY	AFK
P4	DEC 09	MING	ISSUE TO MTRC & EPD	FY	AFK
P3	NOV 09	MING	ISSUE TO MTRC & EPD	EH	AFK
P2	SEP 09	MING	ISSUE TO MTRC	EH	AFK
P1	APR 09	MING	ISSUE TO MTRC	EH	AFK

Rev Date Drawn Description Ch'kd/ App'd

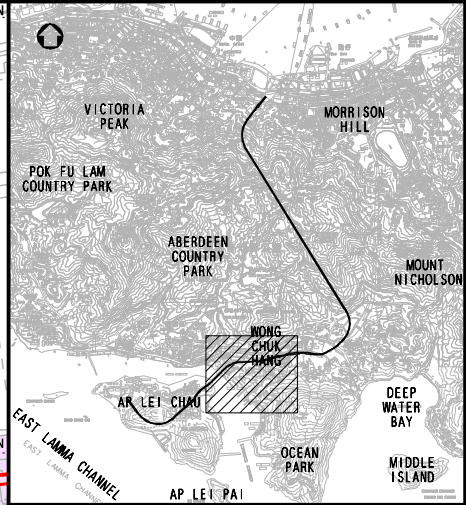
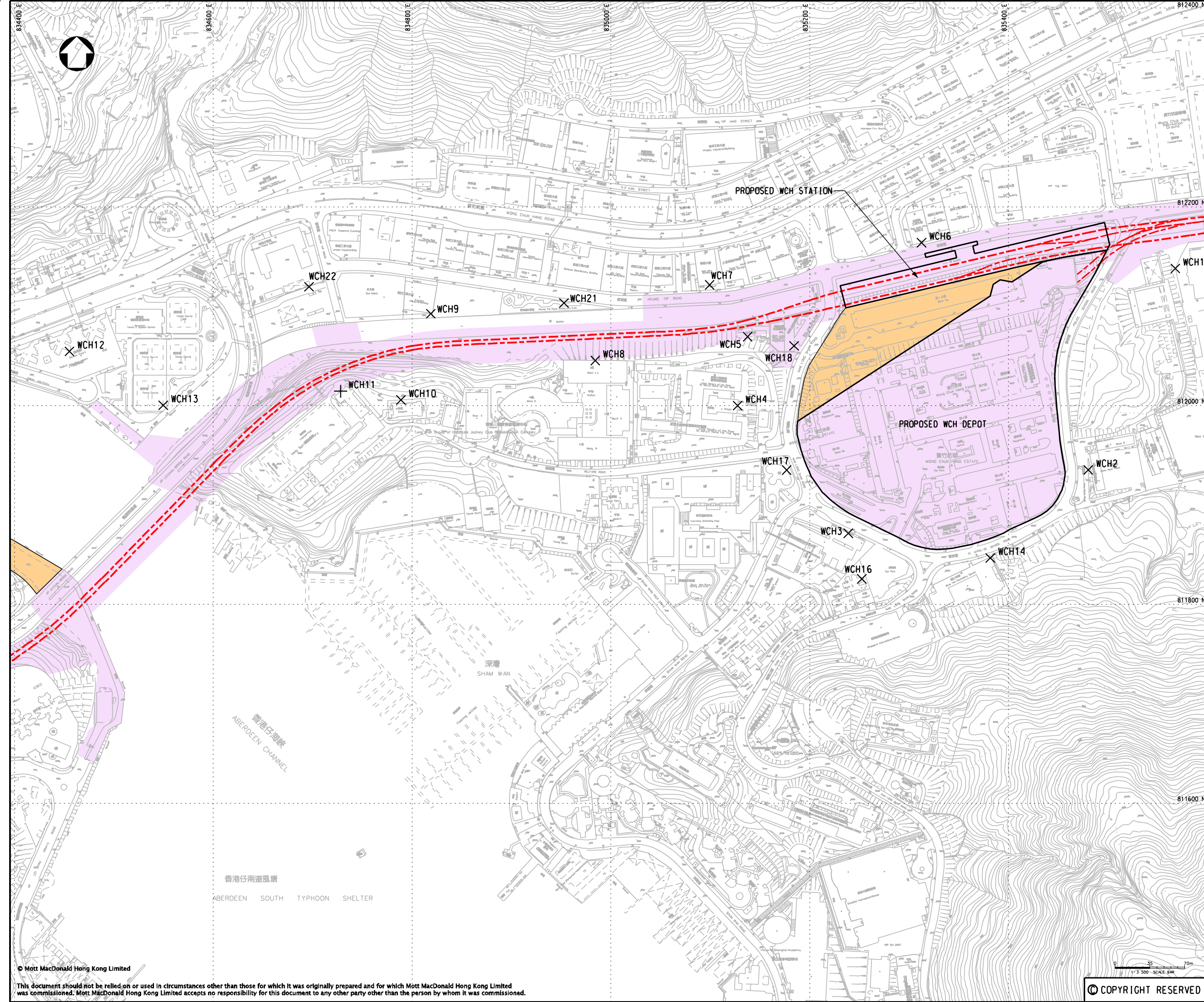


Project
CONSULTANCY AGREEMENT NO. NEX/2301
SOUTH ISLAND LINE (EAST)
ENVIRONMENTAL IMPACT ASSESSMENT

Title
LOCATIONS OF AIR SENSITIVE RECEIVERS
AT NAM FUNG PORTAL AND OCEAN PARK

Designed	EH	Eng.Chk.	FY
Drawn	MING	Coordination	FY
Dwg.Chk.	EH	Approved	AFK
Scale	1:3500@A3	Project	248137
Project	248137	Status	PRE
Drawing No.	FIGURE 10.3	Rev	P6

© Mott MacDonald Hong Kong Limited
 This document should not be relied on or used in circumstances other than those for which it was originally prepared and for which Mott MacDonald Hong Kong Limited was commissioned. Mott MacDonald Hong Kong Limited accepts no responsibility for this document to any other party other than the person by whom it was commissioned.



KEY PLAN

LEGEND:

- PROPOSED SIL(E) ALIGNMENT
- PROPOSED WORKS SITE (GROUND LEVEL AND UNDERGROUND)
- PROPOSED WORKS AREA (GROUND LEVEL)
- X AIR SENSITIVE RECEIVER

P6	JUN 10	MING	ISSUE TO MTRC & EPD	FY	AFK
P5	MAY 10	MING	ISSUE TO MTRC & EPD	FY	AFK
P4	DEC 09	MING	ISSUE TO MTRC & EPD	FY	AFK
P3	NOV 09	MING	ISSUE TO MTRC & EPD	EH	AFK
P2	SEP 09	MING	ISSUE TO MTRC	EH	AFK
P1	APR 09	MING	ISSUE TO MTRC	EH	AFK

Rev Date Drawn Description Ch'kd/App'd

Client

20/F Two Landmark East
100 How Ming Street
Kwan Tong, Kowloon
Hong Kong
T +852 2828 5757
F +852 2827 1823
W www.mottmac.com.hk

Project

**CONSULTANCY AGREEMENT NO. NEX/2301
SOUTH ISLAND LINE (EAST)
ENVIRONMENTAL IMPACT ASSESSMENT**

Title

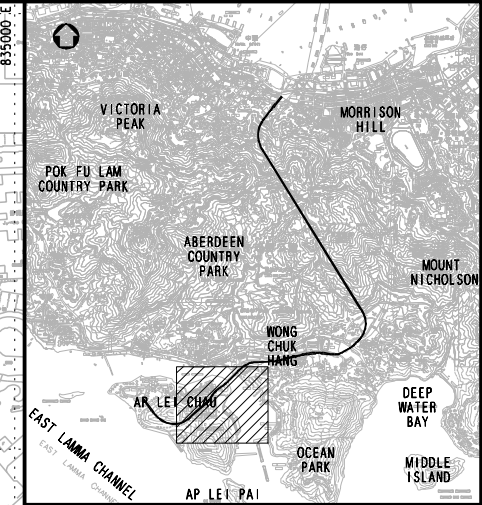
**LOCATIONS OF AIR SENSITIVE RECEIVERS
IN WONG CHUK HANG**

Designed	EH	Eng.Chk.	FY
Drawn	MING	Coordination	FY
Dwg.Chk.	EH	Approved	AFK

Scale	Project	Status
1:3500@A3	248137	PRE
Drawing No.	CAD File	Rev
	\\1248137\rsport1\env\velo\002231\ch10\F16	0-4.dgn


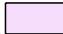
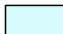




香港仔灣
ABERDEEN HARBOUR



KEY PLAN

LEGEND:

-  PROPOSED SIL(E) ALIGNMENT
-  PROPOSED WORKS SITE (GROUND LEVEL AND UNDERGROUND)
-  PROPOSED WORKS SITE (UNDERGROUND)
-  PROPOSED WORKS AREA (GROUND LEVEL)
-  AIR SENSITIVE RECEIVER

P6	JUN 10	MING	ISSUE TO MTRC & EPD	FY	AFK
P5	MAY 10	MING	ISSUE TO MTRC & EPD	FY	AFK
P4	DEC 09	MING	ISSUE TO MTRC & EPD	FY	AFK
P3	NOV 09	MING	ISSUE TO MTRC & EPD	EH	AFK
P2	SEP 09	MING	ISSUE TO MTRC	EH	AFK
P1	APR 09	MING	ISSUE TO MTRC	EH	AFK
Rev	Date	Drawn	Description		Ch'kd/App'd

Client



20/F Two Landmark East
100 How Ming Street
Kwan Tong, Kowloon
Hong Kong
T +852 2828 5757
F +852 2827 1823
www.mottmac.com.hk

Project

CONSULTANCY AGREEMENT NO. NEX/2301
SOUTH ISLAND LINE (EAST)
ENVIRONMENTAL IMPACT ASSESSMENT

Title

LOCATIONS OF AIR SENSITIVE RECEIVERS
IN LEI TUNG

Designed	EH	Eng.Chk.	FY
Drawn	MING	Coordination	FY
Dwg.Chk.	EH	Approved	AFK

Scale	Project	Status
1:3500@A3	248137	PRE
	CAD File	Rev
	\\248137\rsport1\env\elo_000223\ch10\F16_0-5.dgn	P6

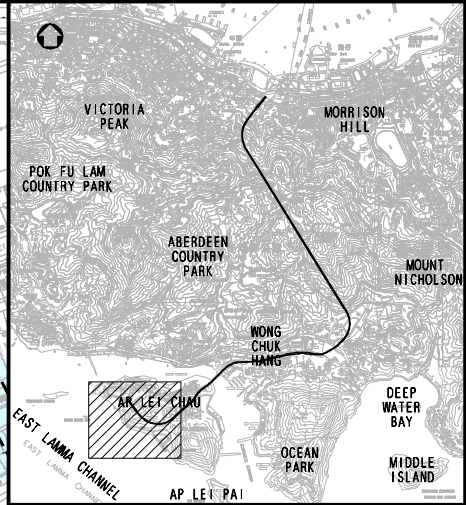
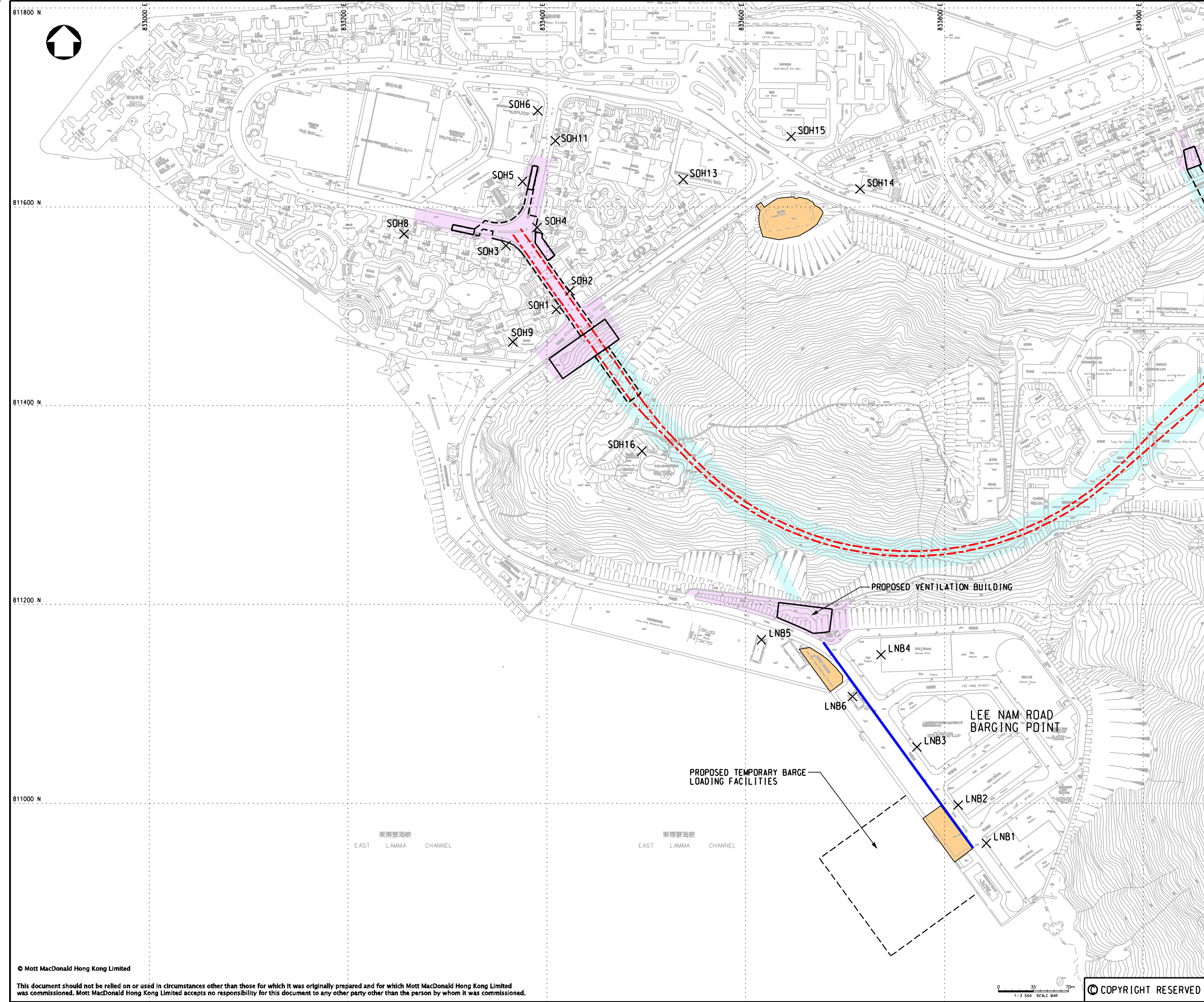
Drawing No.

FIGURE 10.5

P6

© COPYRIGHT RESERVED

© Mott MacDonald Hong Kong Limited
This document should not be relied on or used in circumstances other than those for which it was originally prepared and for which Mott MacDonald Hong Kong Limited was commissioned. Mott MacDonald Hong Kong Limited accepts no responsibility for this document to any other party other than the person by whom it was commissioned.



KEY PLAN

LEGEND:

- PROPOSED SIL(E) ALIGNMENT
- PROPOSED TEMPORARY OVERHEAD CONVEYANCE SYSTEM
- PROPOSED WORKS SITE (GROUND LEVEL AND UNDERGROUND)
- PROPOSED WORKS SITE (UNDERGROUND)
- PROPOSED WORKS AREA (GROUND LEVEL)
- ✕ AIR SENSITIVE RECEIVER

P6	JUN 10	MING	ISSUE TO MTRC & EPD	FY	AFK
P5	MAY 10	MING	ISSUE TO MTRC & EPD	FY	AFK
P4	DEC 09	MING	ISSUE TO MTRC & EPD	FY	AFK
P3	NOV 09	MING	ISSUE TO MTRC & EPD	EH	AFK
P2	SEP 09	MING	ISSUE TO MTRC	EH	AFK
P1	APR 09	MING	ISSUE TO MTRC	EH	AFK

Rev	Date	Drawn	Description	Ch'kd	App'd

Client

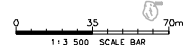
20/F Two Landmark East
100 How Ming Street
Kwan Tong, Kowloon
Hong Kong
T +852 2828 5757
F +852 2827 1823
www.mottmac.com.hk

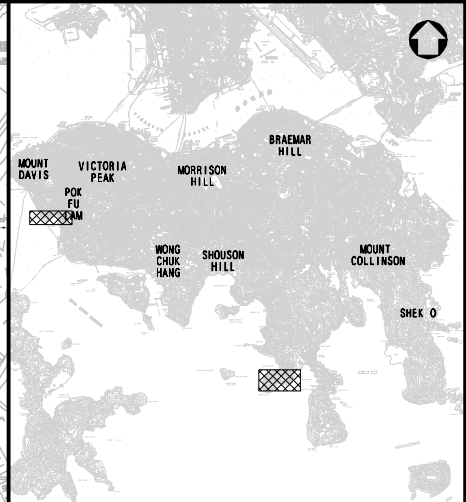
Project
CONSULTANCY AGREEMENT NO. NEX/2301
SOUTH ISLAND LINE (EAST)
ENVIRONMENTAL IMPACT ASSESSMENT

Title
LOCATIONS OF AIR SENSITIVE RECEIVERS
IN SOUTH HORIZONS AND LEE NAM ROAD
BARGING POINT

Designed	EH	Eng.Chk.	FY
Drawn	MING	Coordination	FY
Dwg.Chk.	EH	Approved	AFK
Scale	1:3500@A3	Project	248137
Drawing No.	FIGURE 10.6	Status	PRE

© COPYRIGHT RESERVED





KEY PLAN

LEGEND:

- PROPOSED WORKS AREA (GROUND LEVEL)
- ✕ AIR SENSITIVE RECEIVER

Rev	Date	Drawn	Description	Ch'kd	App'd
P6	JUN 10	MING	ISSUE TO MTRC & EPD	FY	AFK
P5	MAY 10	MING	ISSUE TO MTRC & EPD	FY	AFK
P4	DEC 09	MING	ISSUE TO MTRC & EPD	FY	AFK
P3	NOV 09	MING	ISSUE TO MTRC & EPD	EH	AFK
P2	SEP 09	MING	ISSUE TO MTRC	EH	AFK
P1	APR 09	MING	ISSUE TO MTRC	EH	AFK

Client




20/F Two Landmark East
100 How Ming Street
Kwan Tong, Kowloon
Hong Kong
T +852 2828 5757
F +852 2827 1823
W www.mottmac.com.hk

Project
**CONSULTANCY AGREEMENT NO. NEX/2301
SOUTH ISLAND LINE (EAST)
ENVIRONMENTAL IMPACT ASSESSMENT**

Title
**LOCATIONS OF AIR SENSITIVE RECEIVERS
AT CHUNG HOM SHAN MAGAZINE SITE
AND TELEGRAPH BAY BARGING POINT**

Designed	EH	Eng.Chk.	FY	
Drawn	MING	Coordination	FY	
Dwg.Chk.	EH	Approved	AFK	
Scale	1:4000@A3	Project	248137	Status PRE
Drawing No.		CAD File	4\248137\REPORT\ENV\EIA_000223\CH01V10-1.dgn	Rev P6

