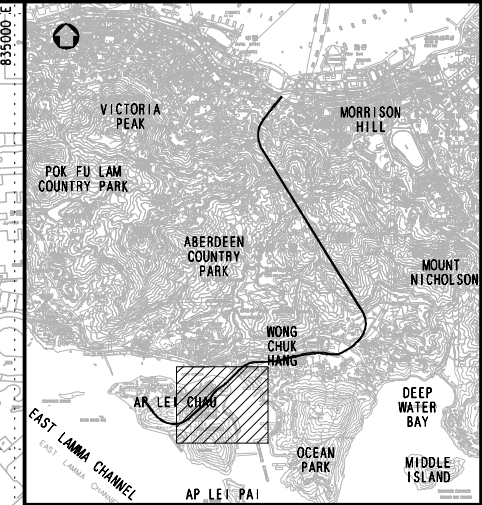




香港仔灣
ABERDEEN HARBOUR



KEY PLAN

- LEGEND:**
- PROPOSED SIL(E) ALIGNMENT
 - PROPOSED WORKS SITE (GROUND LEVEL AND UNDERGROUND)
 - PROPOSED WORKS SITE (UNDERGROUND)
 - PROPOSED WORKS AREA (GROUND LEVEL)
 - AIR SENSITIVE RECEIVER

P6	JUN 10	MING	ISSUE TO MTRC & EPD	FY	AFK
P5	MAY 10	MING	ISSUE TO MTRC & EPD	FY	AFK
P4	DEC 09	MING	ISSUE TO MTRC & EPD	FY	AFK
P3	NOV 09	MING	ISSUE TO MTRC & EPD	EH	AFK
P2	SEP 09	MING	ISSUE TO MTRC	EH	AFK
P1	APR 09	MING	ISSUE TO MTRC	EH	AFK
Rev	Date	Drawn	Description		Ch'kd/App'd

Client

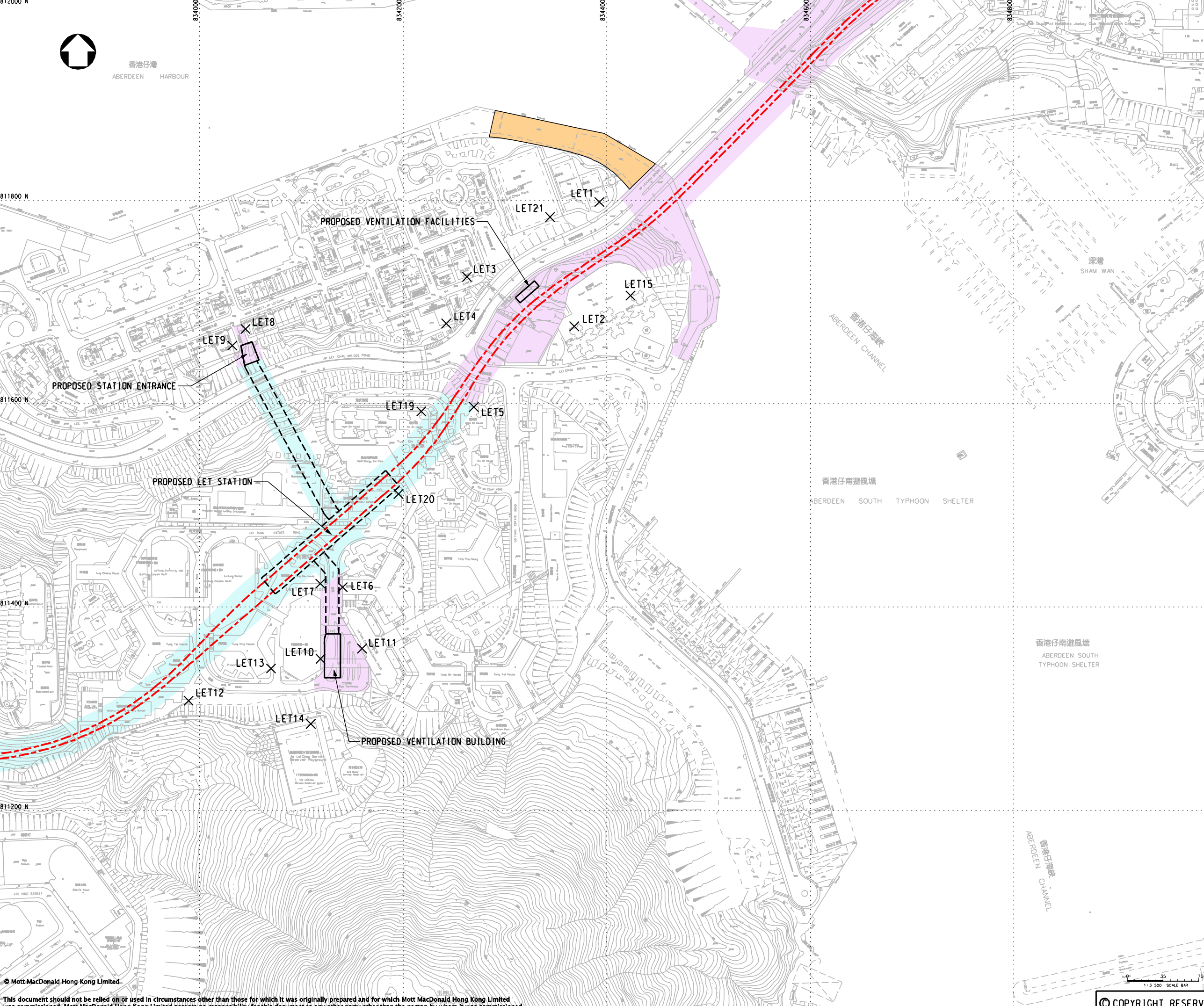
20/F Two Landmark East
100 How Ming Street
Kwan Tong, Kowloon
Hong Kong
T +852 2828 5757
F +852 2827 1823
www.mottmac.com.hk

Project
**CONSULTANCY AGREEMENT NO. NEX/2301
SOUTH ISLAND LINE (EAST)
ENVIRONMENTAL IMPACT ASSESSMENT**

Title
**LOCATIONS OF AIR SENSITIVE RECEIVERS
IN LEI TUNG**

Designed	EH	Eng.Chk.	FY
Drawn	MING	Coordination	FY
Dwg.Chk.	EH	Approved	AFK
Scale	1:3500@A3	Project	248137
Drawing No.	FIGURE 10.5	Status	PRE
		Rev	P6

© COPYRIGHT RESERVED



© Mott MacDonald Hong Kong Limited
This document should not be relied on or used in circumstances other than those for which it was originally prepared and for which Mott MacDonald Hong Kong Limited was commissioned. Mott MacDonald Hong Kong Limited accepts no responsibility for this document to any other party other than the person by whom it was commissioned.