

KEY PLAN

LEGEND:

- PROPOSED WORKS AREA (GROUND LEVEL)
- ✕ AIR SENSITIVE RECEIVER

Rev	Date	Drawn	Description	Ch'kd	App'd
P6	JUN 10	MING	ISSUE TO MTRC & EPD	FY	AFK
P5	MAY 10	MING	ISSUE TO MTRC & EPD	FY	AFK
P4	DEC 09	MING	ISSUE TO MTRC & EPD	FY	AFK
P3	NOV 09	MING	ISSUE TO MTRC & EPD	EH	AFK
P2	SEP 09	MING	ISSUE TO MTRC	EH	AFK
P1	APR 09	MING	ISSUE TO MTRC	EH	AFK

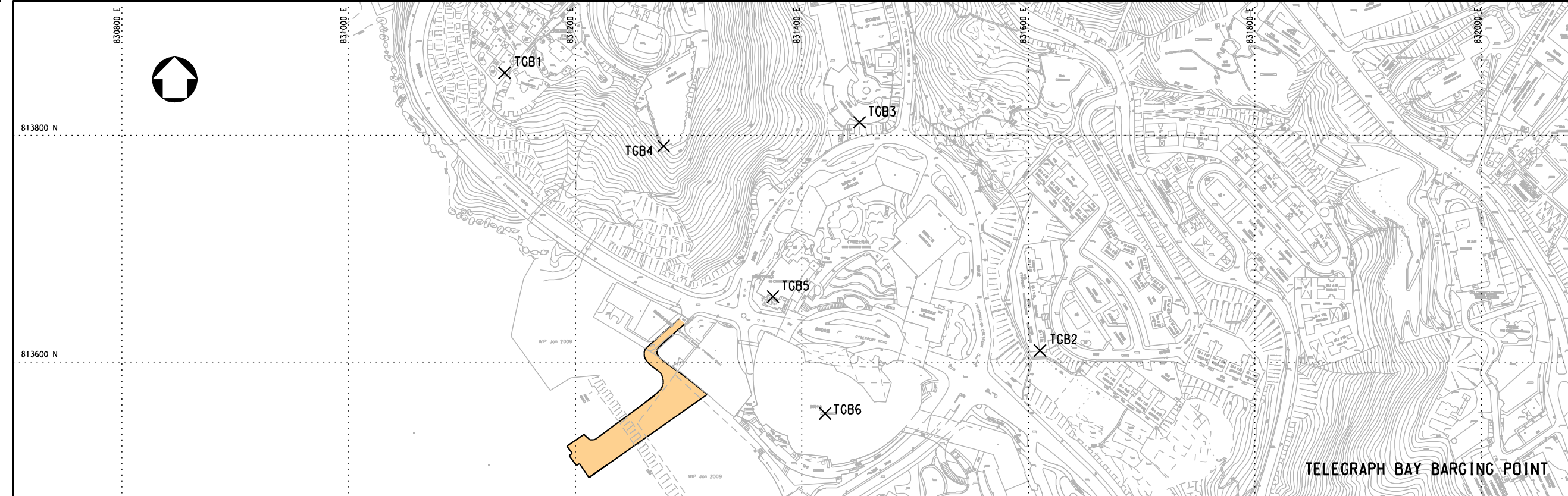


Client
MTR

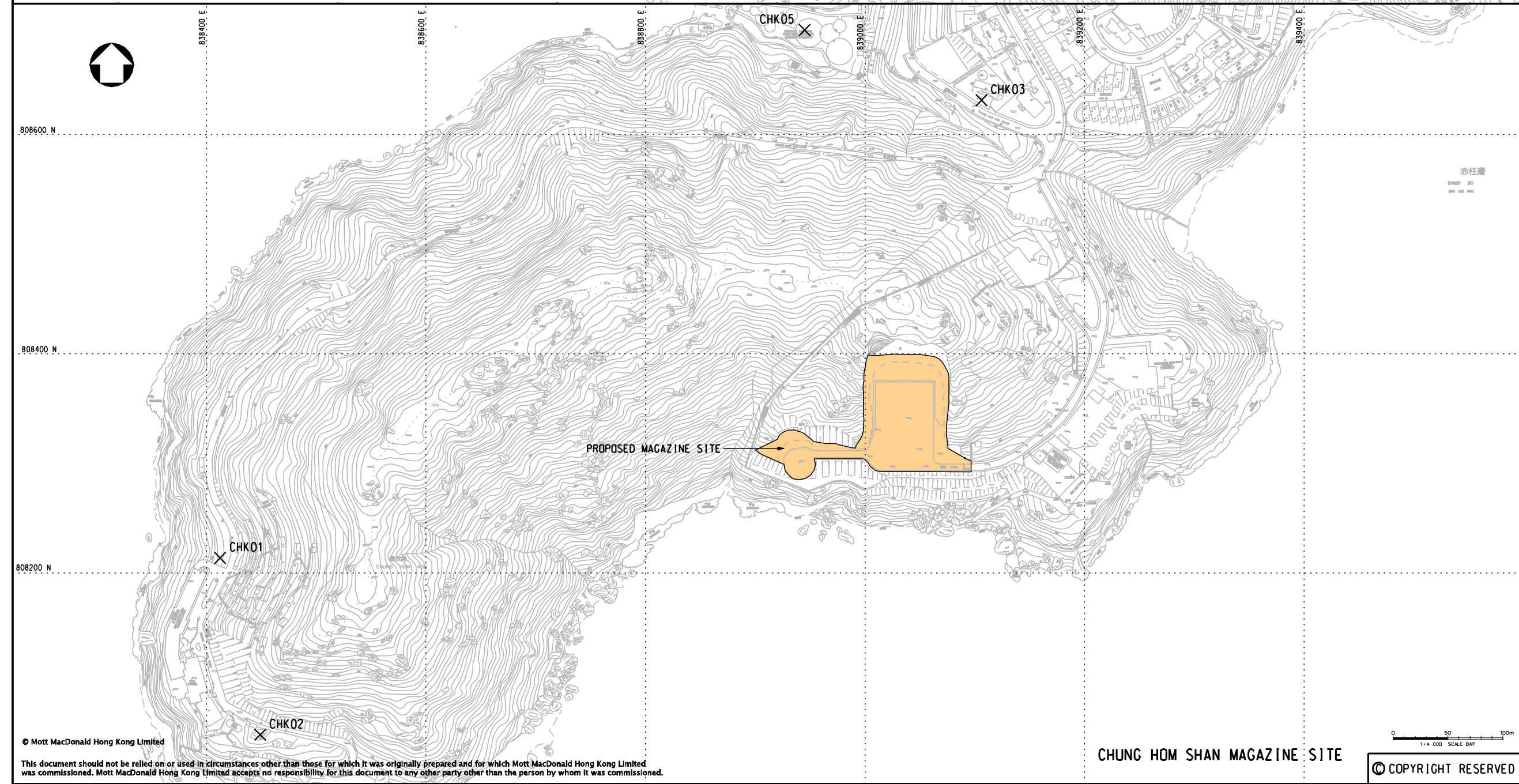
Project
**CONSULTANCY AGREEMENT NO. NEX/2301
SOUTH ISLAND LINE (EAST)
ENVIRONMENTAL IMPACT ASSESSMENT**

Title
**LOCATIONS OF AIR SENSITIVE RECEIVERS
AT CHUNG HOM SHAN MAGAZINE SITE
AND TELEGRAPH BAY BARGING POINT**

Designed	EH	Eng.Chk.	FY	
Drawn	MING	Coordination	FY	
Dwg.Chk.	EH	Approved	AFK	
Scale	1:4000@A3	Project	248137	Status
		CAD File	3\248137\REPORT\ENV\EIA_000223\CH01\FIG_10-7.dgn	PRE
Drawing No.				Rev
				P6

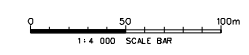


TELEGRAPH BAY BARGING POINT



PROPOSED MAGAZINE SITE

CHUNG HOM SHAN MAGAZINE SITE



© COPYRIGHT RESERVED