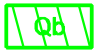


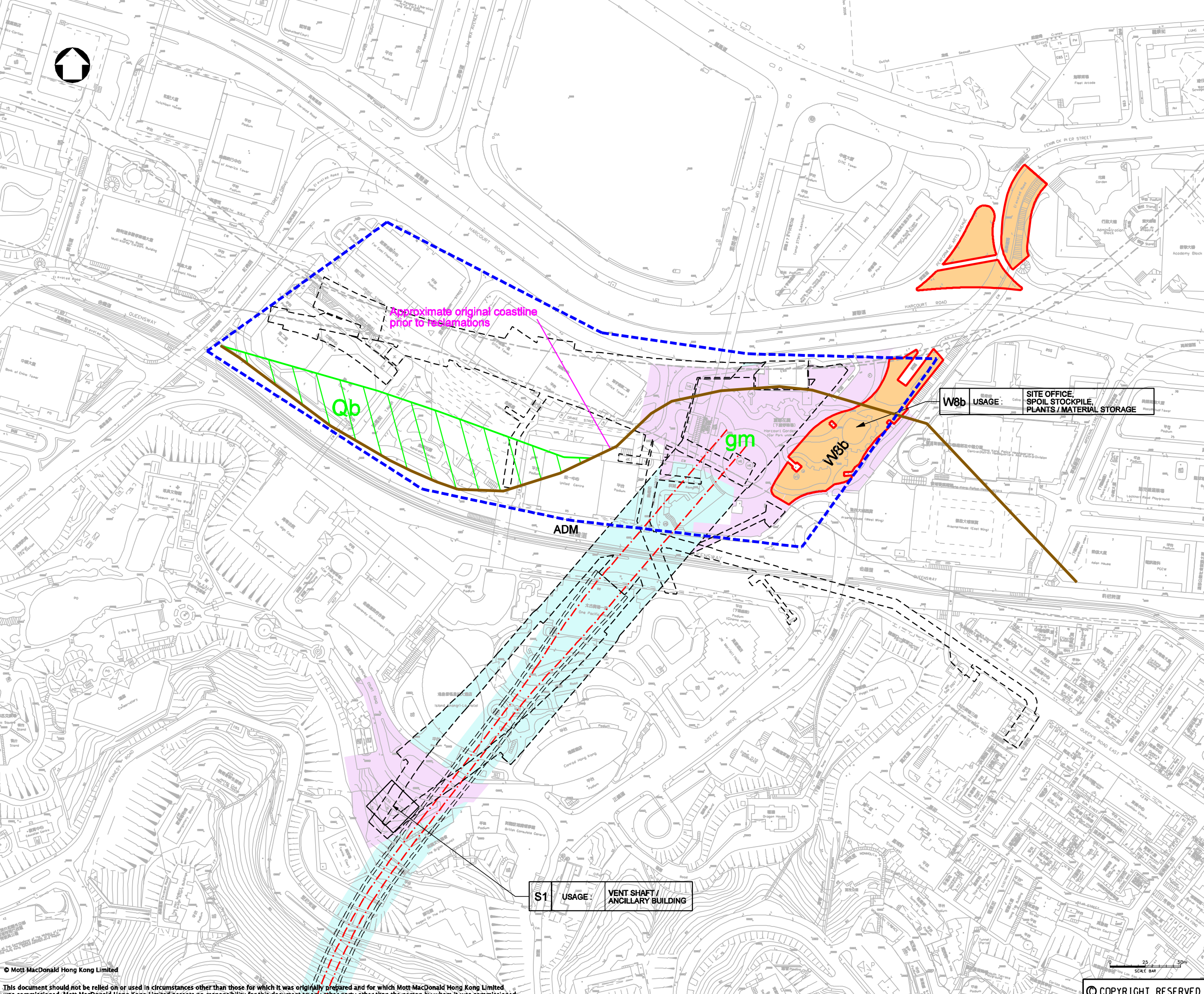




- Legend :**
-  Holocene beach deposits
 -  approximate coastline prior to 1863 reclamations
 -  Former British Naval Base



W8b USAGE : SITE OFFICE, SPOIL STOCKPILE, PLANTS / MATERIAL STORAGE

S1 USAGE : VENT SHAFT / ANCILLARY BUILDING

P5	FEB 10	MING	ISSUE TO EPD & EPD	BL	AFK
P4	DEC 09	MING	ISSUE TO EPD & EPD	BL	AFK
P3	NOV 09	MING	ISSUE TO EPD & EPD	BL	AFK
P2	SEP 09	MING	ISSUE TO EPD	BL	AFK
P1	APR 09	MING	ISSUE TO EPD	FY	AFK
Rev	Date	Drawn	Description		Ch'kd/App'd

Client




20/F Two Landmark East
100 How Ming Street
Kowloon, Hong Kong
T +852 2828 6767
F +852 2827 1823
www.mottmac.com.hk

Project

CONSULTANCY AGREEMENT NO. NEX/2301
SOUTH ISLAND LINE (EAST)
ENVIRONMENTAL IMPACT ASSESSMENT

Title

APPROXIMATE LOCATIONS OF ORIGINAL SHORELINE AND FORMER MILITARY STRUCTURES MARKED ON THE ALIGNMENT MAP OF ADMIRALTY

Designed	HC	Eng.Chk.	FY	Status
Drawn	MING	Coordination	FY	PRE
Dwg.Chk.	FY	Approved	AFK	
Scale	1:2500@A3	Project	248137	Rev
		CAD File	1\248137\report\env\elo_000223\chiv\figure_11-15.dgn	P5
Drawing No.			FIGURE 11.19	

© Mott MacDonald Hong Kong Limited
This document should not be relied on or used in circumstances other than those for which it was originally prepared and for which Mott MacDonald Hong Kong Limited was commissioned. Mott MacDonald Hong Kong Limited accepts no responsibility for this document to any other party other than the person by whom it was commissioned.