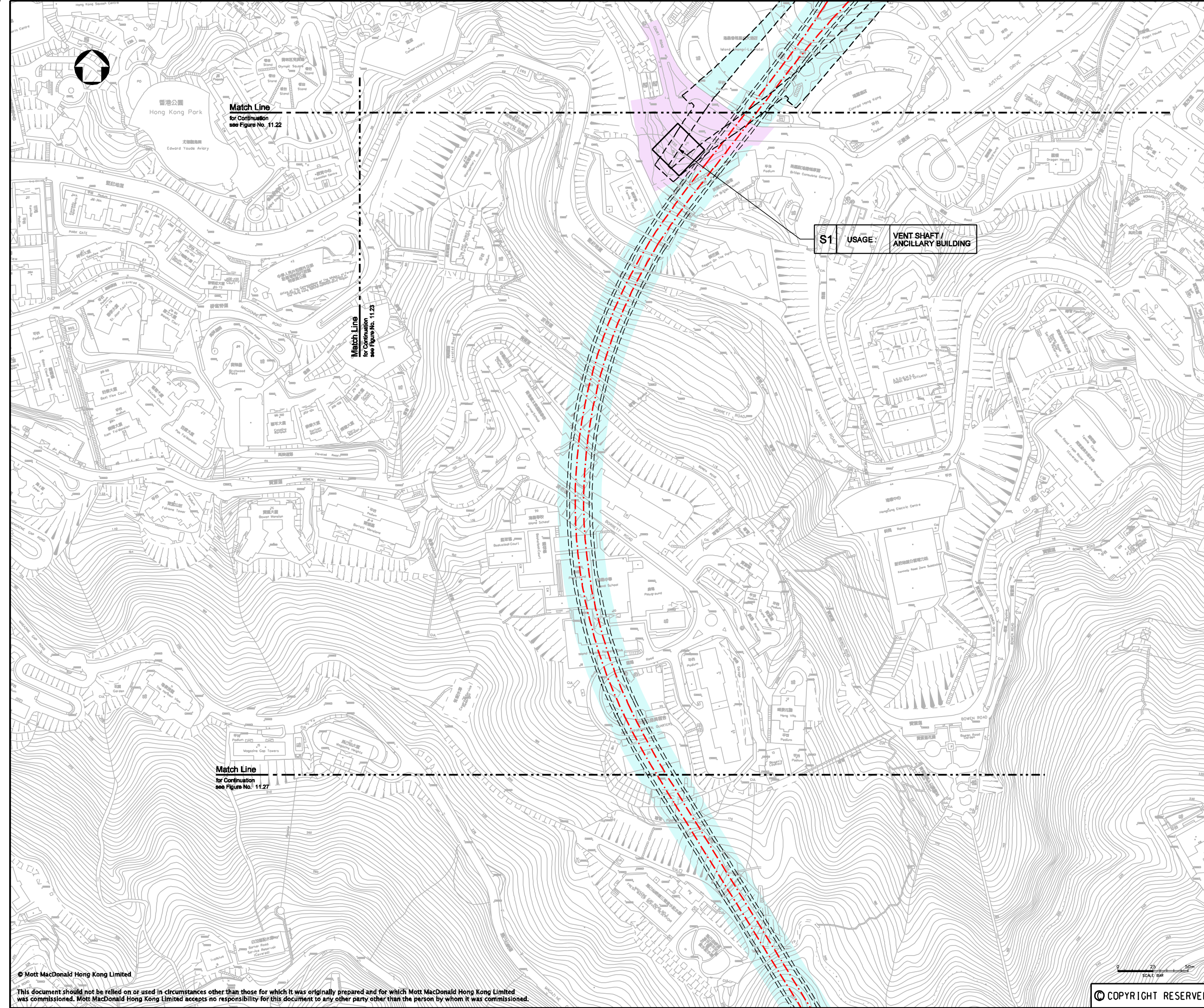


NOTE:

1. FOR LEGEND REFER TO FIGURE No. 11.31



| P4 | DEC 09 | MING | ISSUE TO MTRC & EPD | BL | AFK |
|-----|--------|-------|---------------------|-------------|-----|
| P3 | NOV 09 | MING | ISSUE TO MTRC & EPD | BL | AFK |
| P2 | SEP 09 | MING | ISSUE TO MTRC | BL | AFK |
| P1 | APR 09 | MING | ISSUE TO MTRC | BL | AFK |
| Rev | Date | Drawn | Description | Ch'kd/App'd | |



Project
**CONSULTANCY AGREEMENT NO. NEX/2301
SOUTH ISLAND LINE (EAST)
ENVIRONMENTAL IMPACT ASSESSMENT**

Title
**ASSESSMENT OF ARCHAEOLOGICAL
POTENTIAL - ADMIRALTY**

| | | | |
|----------|------|--------------|-----|
| Designed | BL | Eng.Chk. | FY |
| Drawn | MING | Coordination | FY |
| Dwg.Chk. | BL | Approved | AFK |

| | | |
|-----------|--|--------|
| Scale | Project | Status |
| 1:2500@A3 | 248137 | PRE |
| | CAD File | Rev |
| | K:\248137\report\env\elo_002231\ch\FIGURE 11-2.dgn | P4 |

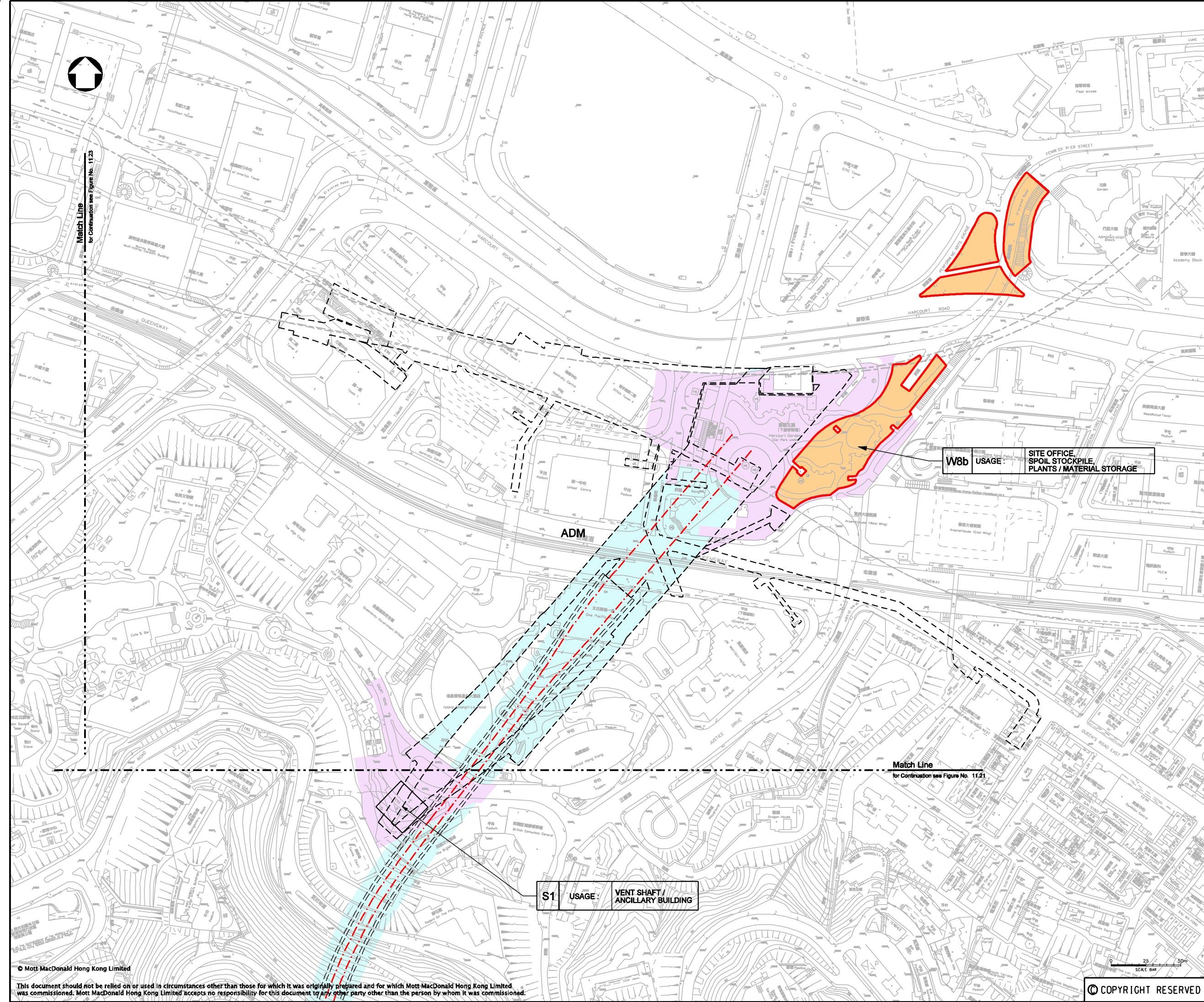
Drawing No. **FIGURE 11.21**

© COPYRIGHT RESERVED

© Mott MacDonald Hong Kong Limited
This document should not be relied on or used in circumstances other than those for which it was originally prepared and for which Mott MacDonald Hong Kong Limited was commissioned. Mott MacDonald Hong Kong Limited accepts no responsibility for this document to any other party other than the person by whom it was commissioned.

NOTE:

1. FOR LEGEND REFER TO FIGURE No. 11.31



W8b USAGE: SITE OFFICE, SPOIL STOCKPILE, PLANTS / MATERIAL STORAGE

S1 USAGE: VENT SHAFT / ANCILLARY BUILDING

| | | | | | |
|-----|--------|-------|---------------------|----|-------------|
| P4 | DEC 09 | MING | ISSUE TO MTRC & EPD | BL | AFK |
| P3 | NOV 09 | MING | ISSUE TO MTRC & EPD | BL | AFK |
| P2 | SEP 09 | MING | ISSUE TO MTRC | BL | AFK |
| P1 | APR 09 | MING | ISSUE TO MTRC | BL | AFK |
| Rev | Date | Drawn | Description | | Ch'kd/App'd |

Client



Project
**CONSULTANCY AGREEMENT NO. NEX/2301
SOUTH ISLAND LINE (EAST)
ENVIRONMENTAL IMPACT ASSESSMENT**

Title
**ASSESSMENT OF ARCHAEOLOGICAL
POTENTIAL - ADMIRALTY**

| | | | |
|----------|------|--------------|-----|
| Designed | BL | Eng.Chk. | FY |
| Drawn | MING | Coordination | FY |
| Dwg.Chk. | BL | Approved | AFK |

| | | |
|-------------|---|--------|
| Scale | Project | Status |
| 1:2500@A3 | 248137 | PRE |
| Drawing No. | CAD File | Rev |
| | \\248137\spart1\env\elo_0002231\ch\FIGURE 11-22.dgn | P4 |

COPYRIGHT RESERVED

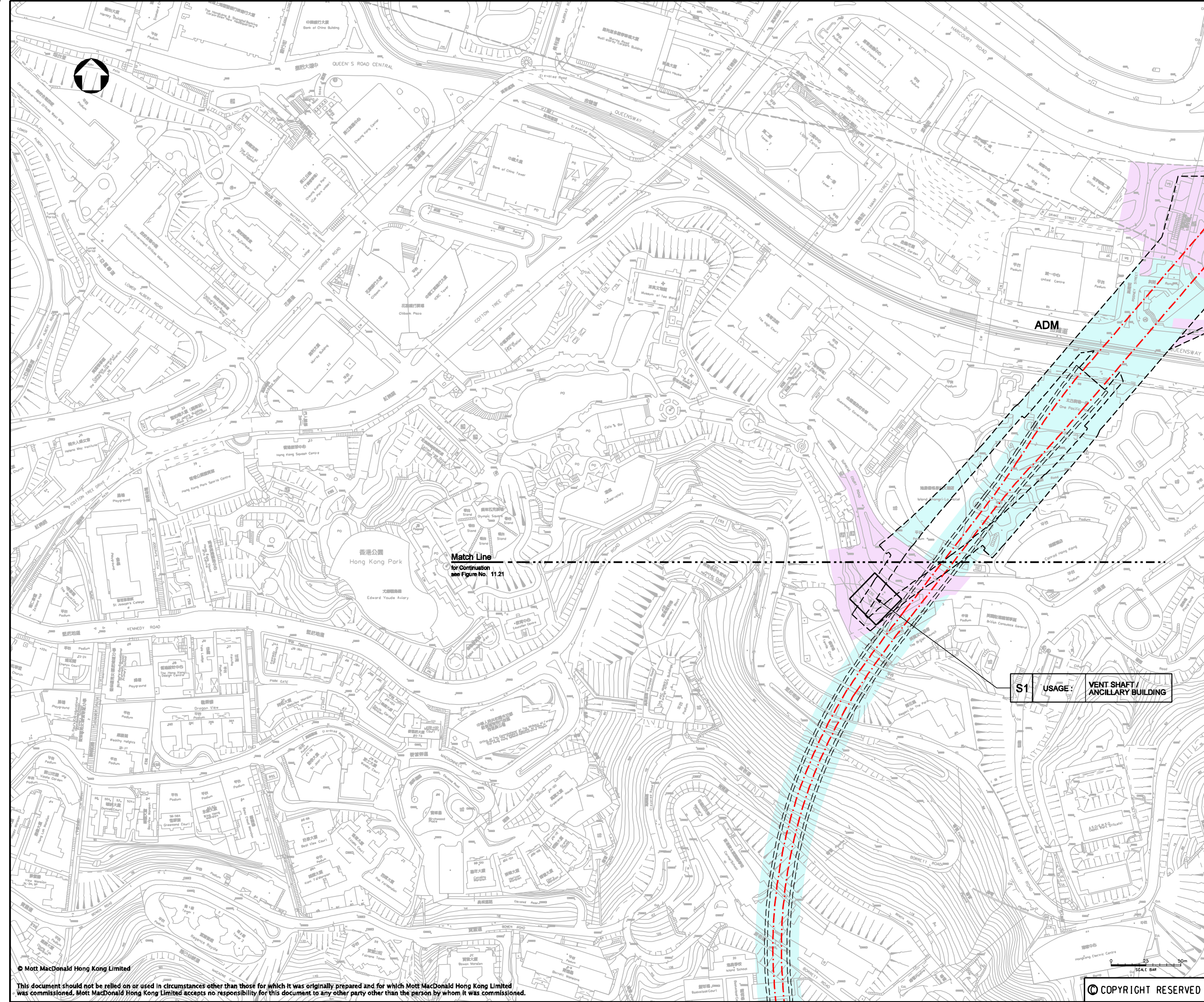
FIGURE 11.22

P4

This document should not be relied on or used in circumstances other than those for which it was originally prepared and for which Mott MacDonald Hong Kong Limited was commissioned. Mott MacDonald Hong Kong Limited accepts no responsibility for this document to any other party other than the person by whom it was commissioned.

NOTE:

1. FOR LEGEND REFER TO FIGURE No. 11.31



| Rev | Date | Drawn | Description | Ch'kd | App'd |
|-----|--------|-------|---------------------|-------|-------|
| P4 | DEC 09 | MING | ISSUE TO MTRC & EPD | BL | AFK |
| P3 | NOV 09 | MING | ISSUE TO MTRC & EPD | BL | AFK |
| P2 | SEP 09 | MING | ISSUE TO MTRC | BL | AFK |
| P1 | APR 09 | MING | ISSUE TO MTRC | BL | AFK |



Project
CONSULTANCY AGREEMENT NO. NEX/2301
SOUTH ISLAND LINE (EAST)
ENVIRONMENTAL IMPACT ASSESSMENT

Title
ASSESSMENT OF ARCHAEOLOGICAL POTENTIAL - ADMIRALTY

| | | | |
|----------|------|--------------|-----|
| Designed | BL | Eng.Chk. | FY |
| Drawn | MING | Coordination | FY |
| Dwg.Chk. | BL | Approved | AFK |

| | | | | | |
|-------------|-----------|----------|---|--------|-----|
| Scale | 1:2500@A3 | Project | 248137 | Status | PRE |
| Drawing No. | | CAD File | 1\248137\report\env\elo_0002231\ch\FIGURE 11-23.dgn | Rev | P4 |

S1 USAGE: VENT SHAFT / ANCILLARY BUILDING

COPYRIGHT RESERVED

FIGURE 11.23

P4

© Mott MacDonald Hong Kong Limited
 This document should not be relied on or used in circumstances other than those for which it was originally prepared and for which Mott MacDonald Hong Kong Limited was commissioned. Mott MacDonald Hong Kong Limited accepts no responsibility for this document to any other party other than the person by whom it was commissioned.

NOTE:
1. FOR LEGEND REFER TO FIGURE No. 11.31



Match Line
for Continuation
see Figure No. 11.25

Match Line
for Continuation
see Figure 11.28

| P4 | DEC 09 | MING | ISSUE TO MTRC & EPD | BL | AFK |
|-----|--------|-------|---------------------|-------------|-----|
| P3 | NOV 09 | MING | ISSUE TO MTRC & EPD | BL | AFK |
| P2 | SEP 09 | MING | ISSUE TO MTRC | BL | AFK |
| P1 | APR 09 | MING | ISSUE TO MTRC | BL | AFK |
| Rev | Date | Drawn | Description | Ch'kd/App'd | |

Client



20/F Two Landmark East
100 How Ming Street
Kowloon, Kowloon
Hong Kong
T +852 2828 5757
F +852 2827 1823
www.mottmac.com.hk

Project

CONSULTANCY AGREEMENT NO. NEX/2301
SOUTH ISLAND LINE (EAST)
ENVIRONMENTAL IMPACT ASSESSMENT

Title

ASSESSMENT OF ARCHAEOLOGICAL
POTENTIAL - NAM FUNG TUNNEL

| | | | |
|----------|------|--------------|-----|
| Designed | BL | Eng.Chk. | FY |
| Drawn | MING | Coordination | FY |
| Dwg.Chk. | BL | Approved | AFK |

| | | |
|-----------|--|--------|
| Scale | Project | Status |
| 1:2500@A3 | 248137 | PRE |
| | CAD File | Rev |
| | \\248137\report\env\elo_002231\ch\FIGURE 11-24.dgn | P4 |

Drawing No. FIGURE 11.24

© COPYRIGHT RESERVED

NOTE:

1. FOR LEGEND REFER TO FIGURE No. 11.31

Match Line
for Continuation
see Figure No. 11.26



香港仔郊野公園

ABERDEEN COUNTRY PARK

Match Line
for Continuation
see Figure No. 11.24

| | | | | | |
|-----|--------|-------|---------------------|----|--------------|
| P4 | DEC 09 | MING | ISSUE TO MTRC & EPD | BL | AFK |
| P3 | NOV 09 | MING | ISSUE TO MTRC & EPD | BL | AFK |
| P2 | SEP 09 | MING | ISSUE TO MTRC | BL | AFK |
| P1 | APR 09 | MING | ISSUE TO MTRC | BL | AFK |
| Rev | Date | Drawn | Description | | Ch'k'd/App'd |

Client



20/F Two Landmark East
100 How Ming Street
Kwan Tong, Kowloon
Hong Kong
T +852 2828 5757
F +852 2827 1823
www.mottmac.com.hk

Project

CONSULTANCY AGREEMENT NO. NEX/2301
SOUTH ISLAND LINE (EAST)
ENVIRONMENTAL IMPACT ASSESSMENT

Title

ASSESSMENT OF ARCHAEOLOGICAL
POTENTIAL - NAM FUNG TUNNEL

| | | | | |
|----------|------|--------------|-----|--|
| Designed | BL | Eng.Chk. | FY | |
| Drawn | MING | Coordination | FY | |
| Dwg.Chk. | BL | Approved | AFK | |

| | | | | | |
|-------|-----------|----------|---|--------|-----|
| Scale | 1:2500@A3 | Project | 248137 | Status | PRE |
| | | CAD File | \\248137\report\env\velo\002231\ch\FIGURE 11-25.dgn | | |

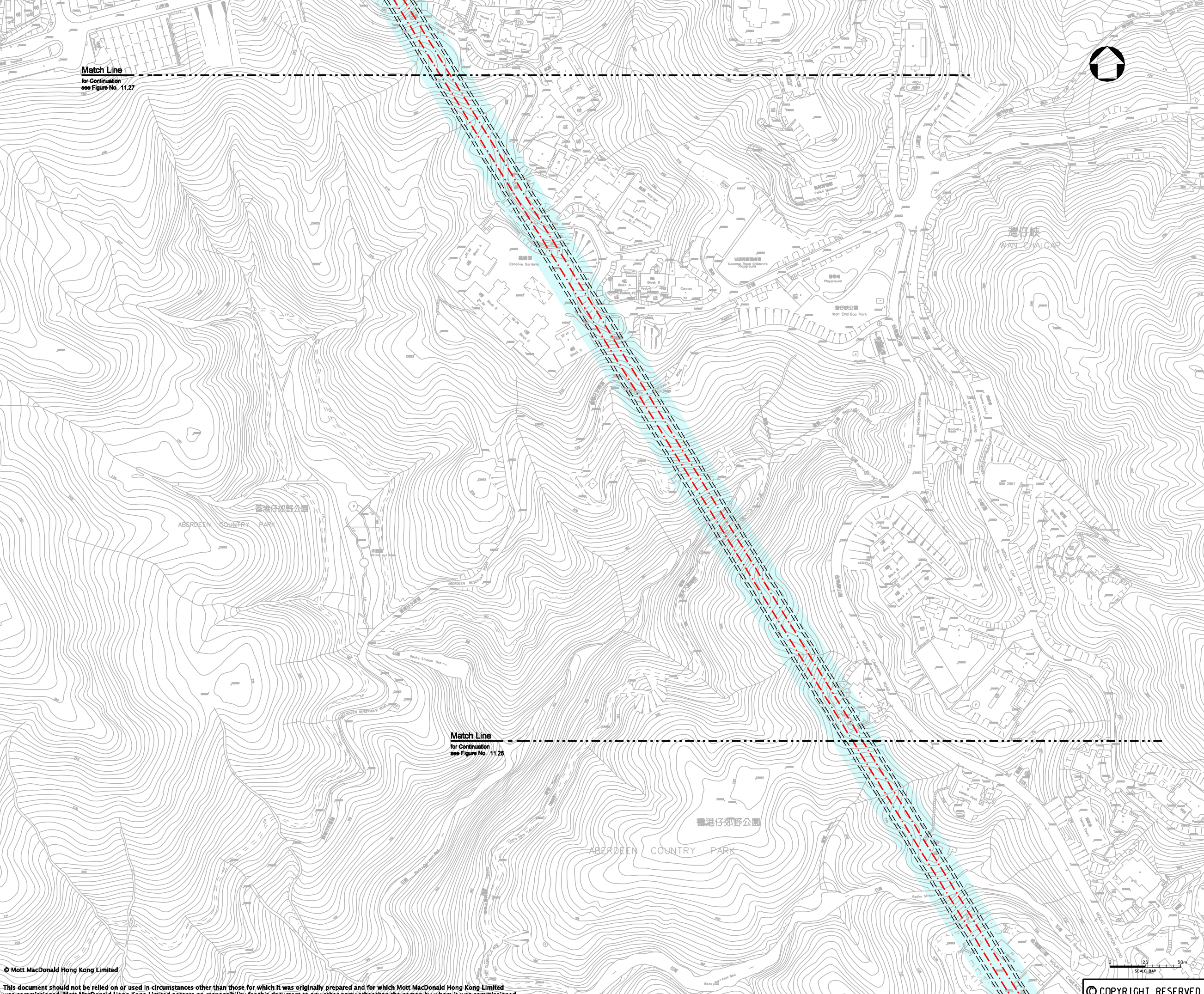
| | | | |
|-------------|--------------|-----|----|
| Drawing No. | FIGURE 11.25 | Rev | P4 |
|-------------|--------------|-----|----|

© COPYRIGHT RESERVED

© Mott MacDonald Hong Kong Limited
This document should not be relied on or used in circumstances other than those for which it was originally prepared and for which Mott MacDonald Hong Kong Limited was commissioned. Mott MacDonald Hong Kong Limited accepts no responsibility for this document to any other party other than the person by whom it was commissioned.

NOTE:
1. FOR LEGEND REFER TO FIGURE No. 11.31

Match Line
for Continuation
see Figure No. 11.27



Match Line
for Continuation
see Figure No. 11.28

| | | | | | |
|-----|--------|-------|---------------------|----|-------------|
| P5 | FEB 10 | MING | ISSUE TO MTRC & EPD | BL | AFK |
| P4 | DEC 09 | MING | ISSUE TO MTRC & EPD | BL | AFK |
| P3 | NOV 09 | MING | ISSUE TO MTRC & EPD | BL | AFK |
| P2 | SEP 09 | MING | ISSUE TO MTRC | BL | AFK |
| P1 | APR 09 | MING | ISSUE TO MTRC | BL | AFK |
| Rev | Date | Drawn | Description | | Ch'kd/App'd |

Client




20/F Two Landmark East
100 How Ming Street
Kwan Tong, Kowloon
Hong Kong
T +852 2828 6767
F +852 2827 1823
www.mottmac.com.hk

Project
**CONSULTANCY AGREEMENT NO. NEX/2301
SOUTH ISLAND LINE (EAST)
ENVIRONMENTAL IMPACT ASSESSMENT**

Title
**ASSESSMENT OF ARCHAEOLOGICAL
POTENTIAL - NAM FUNG TUNNEL**

| | | | |
|----------|------|--------------|-----|
| Designed | BL | Eng.Chk. | FY |
| Drawn | MING | Coordination | FY |
| Dwg.Chk. | BL | Approved | AFK |

| | | |
|-----------|---|--------|
| Scale | Project | Status |
| 1:2500@A3 | 248137 | PRE |
| | CAD File | |
| | K:\248137\report\env\elo_002231\ch11\FIGURE 11-26.dgn | |

Drawing No. **FIGURE 11.26** Rev **P5**

NOTE:
1. FOR LEGEND REFER TO FIGURE No. 11.31



Match Line
for Continuation
see Figure No. 11.21

Match Line
for Continuation
see Figure No. 11.28

| | | | | | |
|-----|--------|-------|---------------------|-------|-------|
| Rev | Date | Drawn | Description | Ch'kd | App'd |
| P5 | FEB 10 | MING | ISSUE TO MTRC & EPD | BL | AFK |
| P4 | DEC 09 | MING | ISSUE TO MTRC & EPD | BL | AFK |
| P3 | NOV 09 | MING | ISSUE TO MTRC & EPD | BL | AFK |
| P2 | SEP 09 | MING | ISSUE TO MTRC | BL | AFK |
| P1 | APR 09 | MING | ISSUE TO MTRC | BL | AFK |

Client



Project
**CONSULTANCY AGREEMENT NO. NEX/2301
SOUTH ISLAND LINE (EAST)
ENVIRONMENTAL IMPACT ASSESSMENT**

Title
**ASSESSMENT OF ARCHAEOLOGICAL
POTENTIAL - NAM FUNG TUNNEL**

| | | | |
|----------|------|--------------|-----|
| Designed | BL | Eng.Chk. | FY |
| Drawn | MING | Coordination | FY |
| Dwg.Chk. | BL | Approved | AFK |

| | | |
|-----------|---|--------|
| Scale | Project | Status |
| 1:2500@A3 | 248137 | PRE |
| | CAD File | |
| | K:\248137\report\env\elo_000223\ch\FIGURE 11-27.dgn | |

Drawing No. **FIGURE 11.27** P5

COPYRIGHT RESERVED