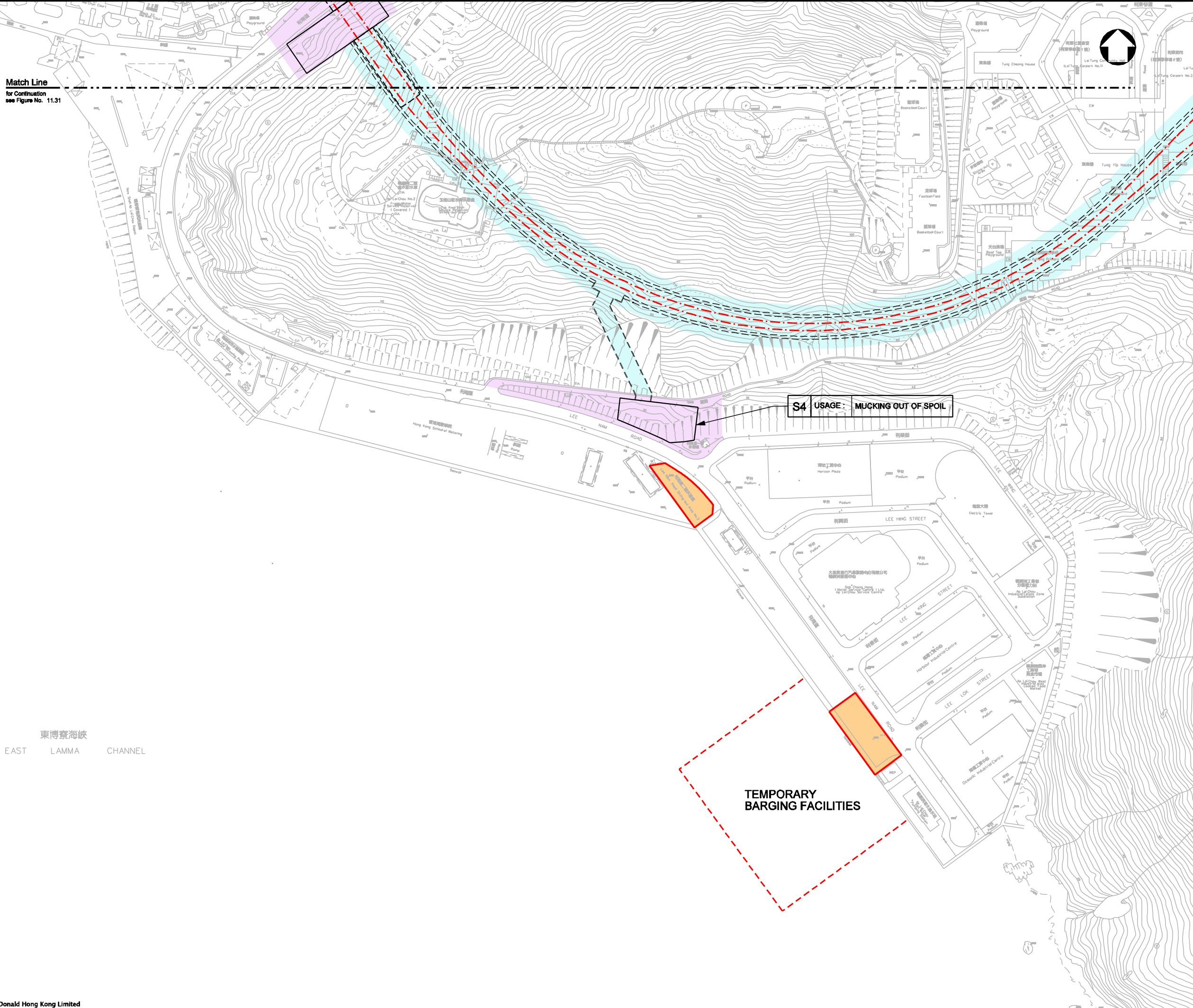


Match Line
for Continuation
see Figure No. 11.31

NOTE:
1. FOR LEGEND REFER TO FIGURE No. 11.31



東博寮海峽
EAST LAMMA CHANNEL

S4 USAGE: MUCKING OUT OF SPOIL

TEMPORARY BARGING FACILITIES

P4	DEC 09	MING	ISSUE TO MTRC & EPD	BL	AFK
P3	NOV 09	MING	ISSUE TO MTRC & EPD	BL	AFK
P2	SEP 09	MING	ISSUE TO MTRC	BL	AFK
P1	APR 09	MING	ISSUE TO MTRC	BL	AFK
Rev	Date	Drawn	Description	Ch'kd/App'd	

Client

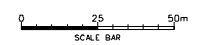



20/F Two Landmark East
100 How Ming Street
Kowloon, Hong Kong
T +852 2828 5757
F +852 2827 1823
www.mottmac.com.hk

Project
CONSULTANCY AGREEMENT NO. NEX/2301
SOUTH ISLAND LINE (EAST)
ENVIRONMENTAL IMPACT ASSESSMENT

Title
ASSESSMENT OF ARCHAEOLOGICAL
POTENTIAL - AP LEI CHAU

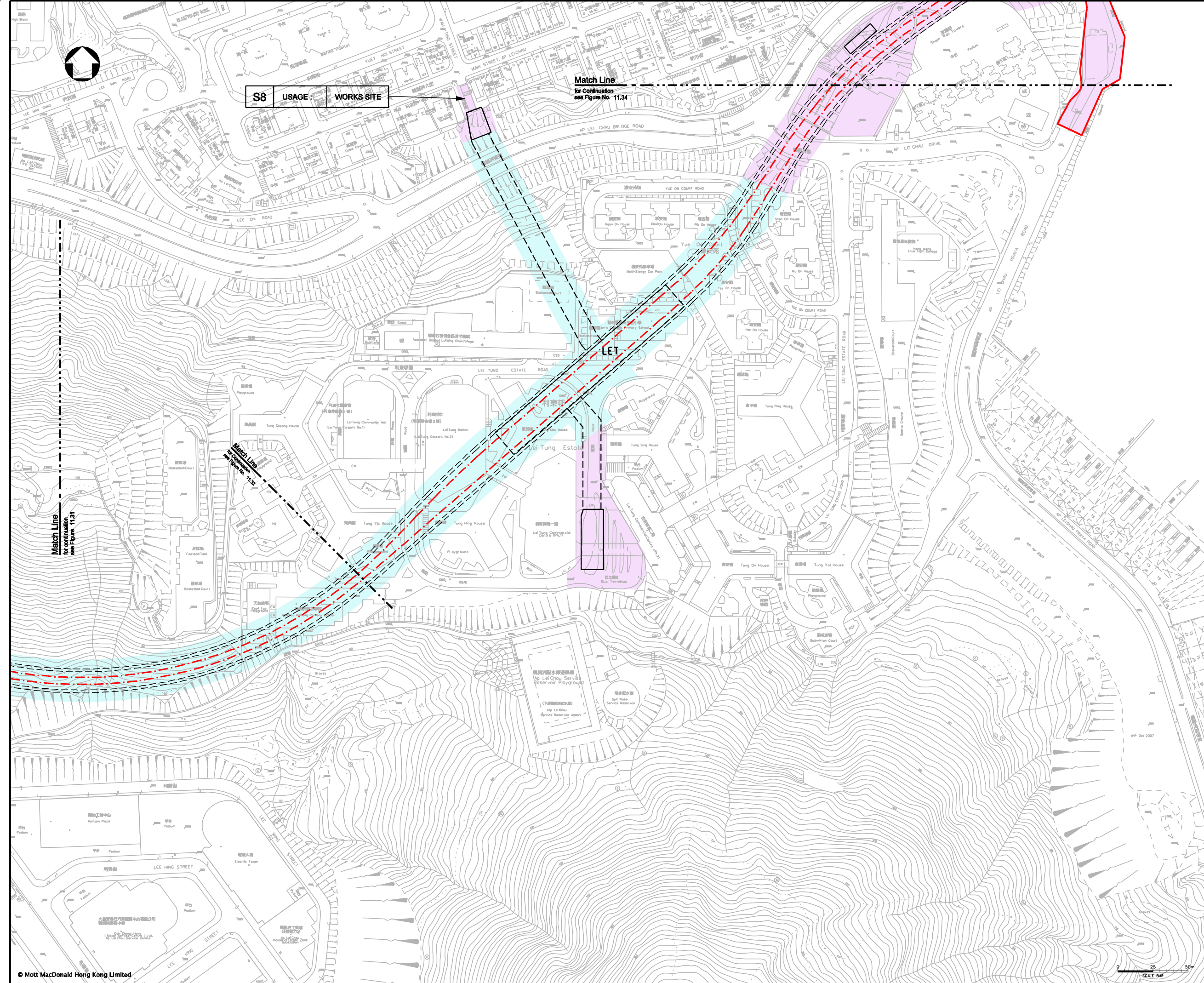
Designed	BL	Eng.Chk.	FY	
Drawn	MING	Coordination	FY	
Dwg.Chk.	BL	Approved	AFK	
Scale	1:2500@A3	Project	248137	Status
		CAD File	h:\248137\report\env\elo_000223\ch\FIGURE_11-32.dgn	PRE
Drawing No.				Rev
				P4



© COPYRIGHT RESERVED


FIGURE 11.32

NOTE:
1. FOR LEGEND REFER TO FIGURE No. 11.31



P4	DEC 09	MING	ISSUE TO MTRC & EPD	BL	AFK
P3	NOV 09	MING	ISSUE TO MTRC & EPD	BL	AFK
P2	SEP 09	MING	ISSUE TO MTRC	BL	AFK
P1	APR 09	MING	ISSUE TO MTRC	BL	AFK
Rev	Date	Drawn	Description	Ch'kd/App'd	

Client



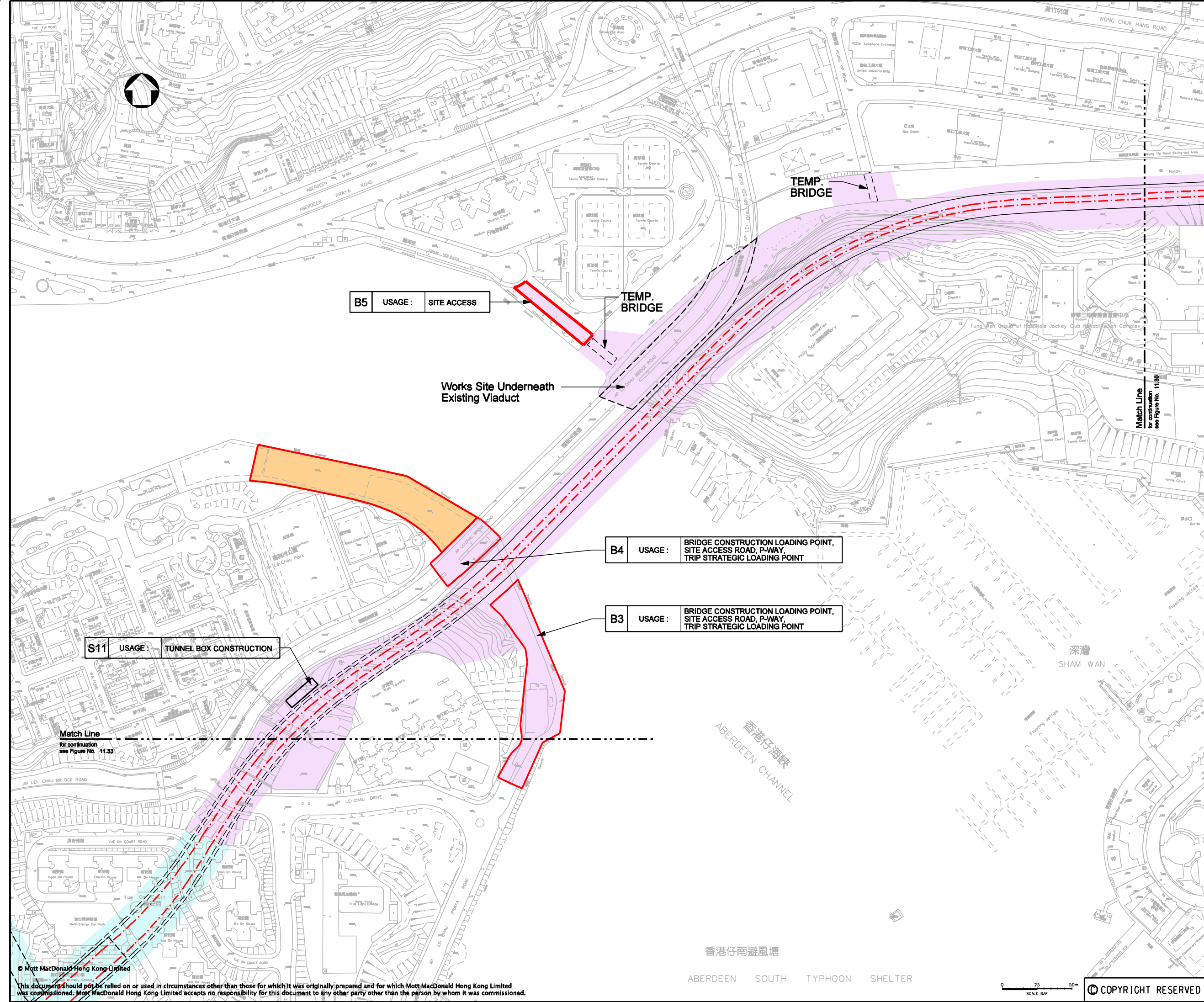

20/F Two Landmark East
100 How Ming Street
Kowloon, Hong Kong
T +852 2828 5757
F +852 2827 1823
www.mottmac.com.hk

Project
CONSULTANCY AGREEMENT NO. NEX/2301
SOUTH ISLAND LINE (EAST)
ENVIRONMENTAL IMPACT ASSESSMENT

Title
ASSESSMENT OF ARCHAEOLOGICAL POTENTIAL - AP LEI CHAU

Designed	BL	Eng.Chk.	FY
Drawn	MING	Coordination	FY
Dwg.Chk.	BL	Approved	AFK
Scale	1:2500@A3	Project	248137
Project	248137	Status	PRE
CAD File	I:\248137\report\env\elo_0002231\ch\FIGURE 11-33.dgn	Rev	P4

NOTE:
1. FOR LEGEND REFER TO FIGURE No. 11.31



B5 USAGE : SITE ACCESS

TEMP. BRIDGE

Works Site Underneath Existing Viaduct

B4 USAGE : BRIDGE CONSTRUCTION LOADING POINT, SITE ACCESS ROAD, P-WAY, TRIP STRATEGIC LOADING POINT

B3 USAGE : BRIDGE CONSTRUCTION LOADING POINT, SITE ACCESS ROAD, P-WAY, TRIP STRATEGIC LOADING POINT

S11 USAGE : TUNNEL BOX CONSTRUCTION

Match Line
for continuation
see Figure No. 11.33

Match Line
for continuation
see Figure No. 11.30

P4	DEC 09	MING	ISSUE TO MTRC & EPD	BL	AFK
P3	NOV 09	MING	ISSUE TO MTRC & EPD	BL	AFK
P2	SEP 09	MING	ISSUE TO MTRC	BL	AFK
P1	APR 09	MING	ISSUE TO MTRC	BL	AFK
Rev	Date	Drawn	Description		Ch'kd/App'd

Client




20/F Two Landmark East
100 How Ming Street
Kwan Tong, Kowloon
Hong Kong
T +852 2828 5757
F +852 2827 1823
www.mottmac.com.hk

Project
**CONSULTANCY AGREEMENT NO. NEX/2301
SOUTH ISLAND LINE (EAST)
ENVIRONMENTAL IMPACT ASSESSMENT**

Title
**ASSESSMENT OF ARCHAEOLOGICAL
POTENTIAL - AP LEI CHAU**

Designed	BL	Eng.Chk.	FY	
Drawn	MING	Coordination	FY	
Dwg.Chk.	BL	Approved	AFK	
Scale	1:2500@A3	Project	248137	Status
		CAD File	1\248137\report\env\elo_000223\ch\FIGURE 11-34.dgn	PRE
Drawing No.				Rev

© Mott MacDonald Hong Kong Limited
This document should not be relied on or used in circumstances other than those for which it was originally prepared and for which Mott MacDonald Hong Kong Limited was commissioned. Mott MacDonald Hong Kong Limited accepts no responsibility for this document to any other party other than the person by whom it was commissioned.

ABERDEEN SOUTH TYPHOON SHELTER



COPYRIGHT RESERVED

FIGURE 11.34

P4