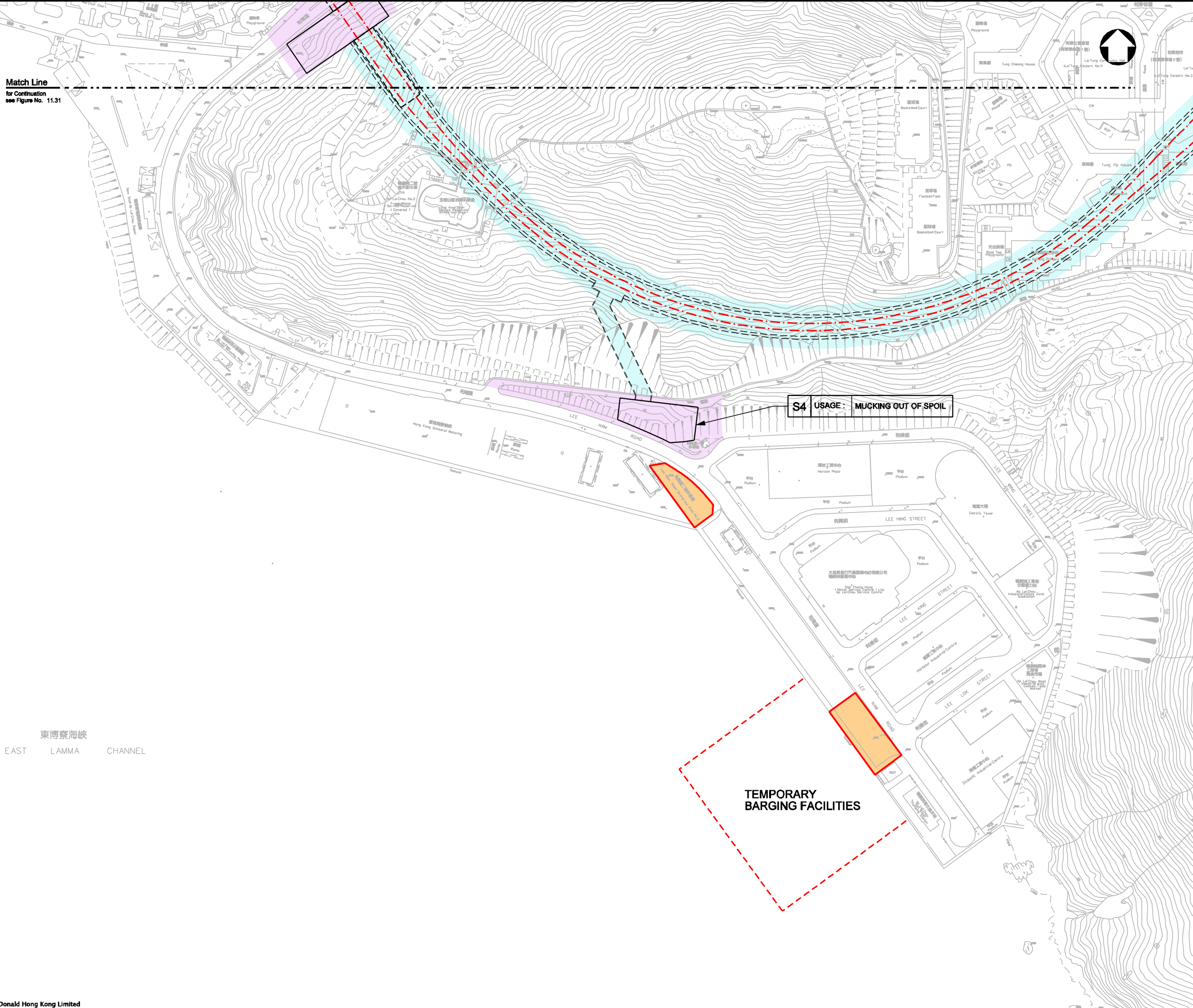


Match Line
for Continuation
see Figure No. 11.31

NOTE:
1. FOR LEGEND REFER TO FIGURE No. 11.31



東博寮海峽
EAST LAMMA CHANNEL

S4 USAGE: MUCKING OUT OF SPOIL

TEMPORARY BARGING FACILITIES

P4	DEC 09	MING	ISSUE TO MTRC & EPD	BL	AFK
P3	NOV 09	MING	ISSUE TO MTRC & EPD	BL	AFK
P2	SEP 09	MING	ISSUE TO MTRC	BL	AFK
P1	APR 09	MING	ISSUE TO MTRC	BL	AFK
Rev	Date	Drawn	Description	Ch'kd/App'd	

Client

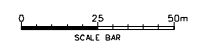



20/F Two Landmark East
100 How Ming Street
Kowloon, Hong Kong
T +852 2828 5757
F +852 2827 1823
www.mottmac.com.hk

Project
CONSULTANCY AGREEMENT NO. NEX/2301
SOUTH ISLAND LINE (EAST)
ENVIRONMENTAL IMPACT ASSESSMENT

Title
ASSESSMENT OF ARCHAEOLOGICAL
POTENTIAL - AP LEI CHAU

Designed	BL	Eng.Chk.	FY	
Drawn	MING	Coordination	FY	
Dwg.Chk.	BL	Approved	AFK	
Scale	1:2500@A3	Project	248137	Status
		CAD File	h:\248137\report\env\elo_000223\ch\FIGURE_11-32.dgn	PRE
Drawing No.				Rev
				P4



COPYRIGHT RESERVED

FIGURE 11.32