

KEY PLAN

LEGEND:

- ASSESSMENT AREA OF CONSTRUCTION PHASE
- ASSESSMENT AREA OF OPERATIONAL PHASE
- SDH2 NOISE SENSITIVE RECEIVER (AIR-BORNE)
- ↑ FACADE FACING
- SEMI-ENCLOSURE COVERING NEAREST TRACK

F	JUN 10	MING	ISSUE TO MTRC & EPD	FN	AFK
E	APR 10	MING	ISSUE TO MTRC & EPD	CWK	AFK
D	DEC 09	MING	ISSUE TO MTRC & EPD	CWK	AFK
C	NOV 09	MING	ISSUE TO MTRC & EPD	CWK	AFK
B	SEP 09	MING	ISSUE TO MTRC	CWK	AFK
A	JUL 09	MM	ISSUE TO MTRC	CWK	AFK
Rev	Date	Drawn	Description	Ch'kd	App'd

Client

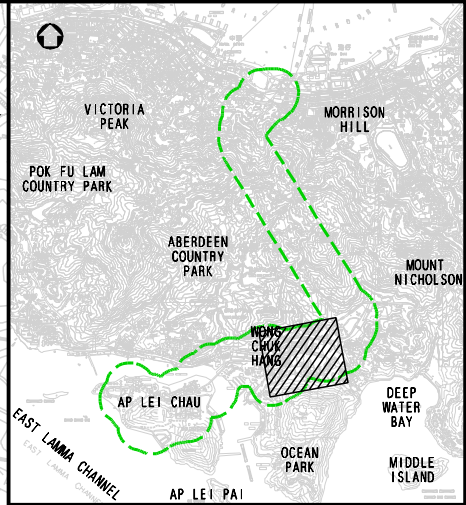
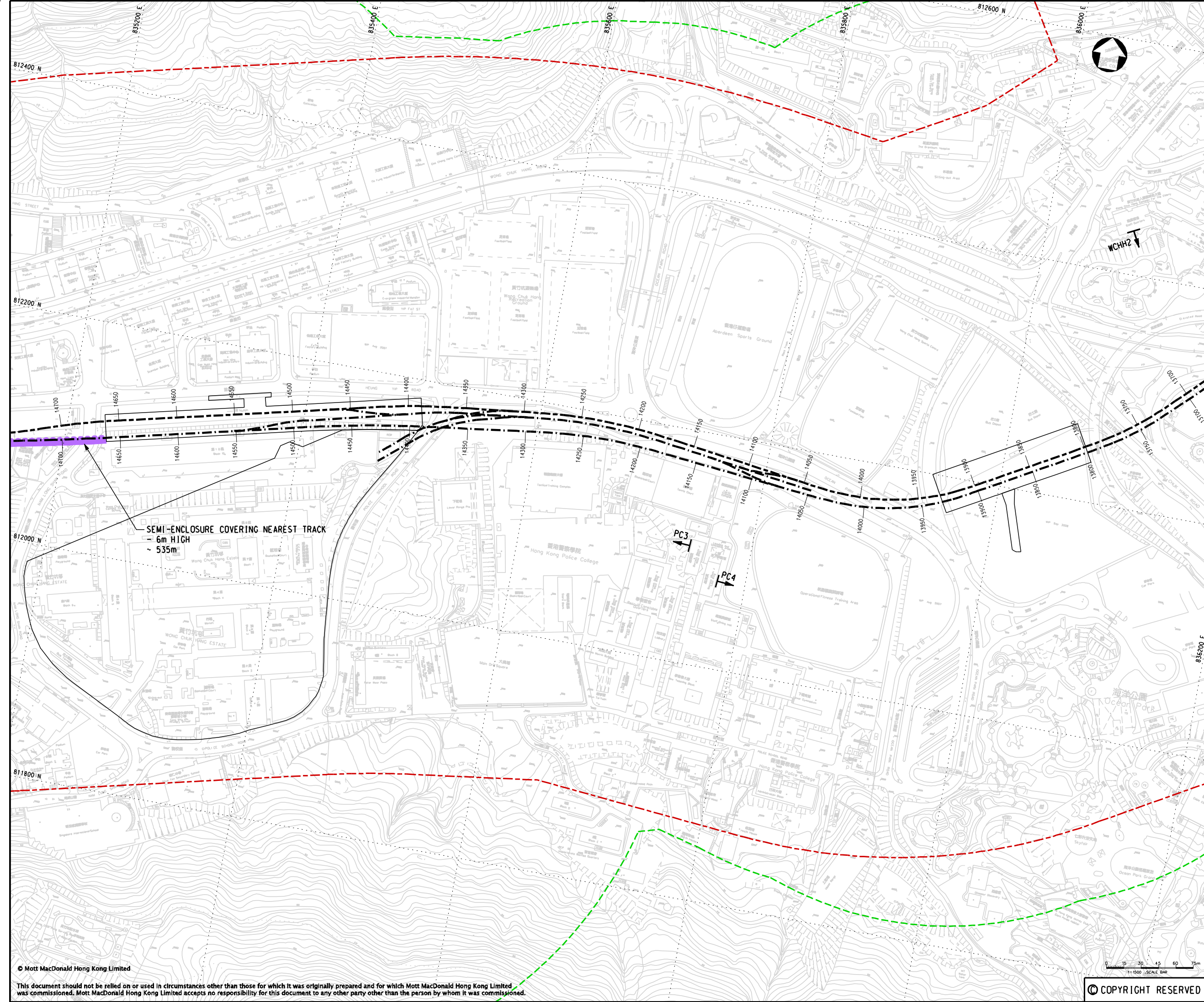
20/F Two Landmark East
100 How Ming Street
Kwan Tong, Kowloon
Hong Kong
T +852 2828 5757
F +852 2827 1823
www.mottmac.com.hk

Project
**CONSULTANCY AGREEMENT NO. NEX/2301
SOUTH ISLAND LINE (EAST)
ENVIRONMENTAL IMPACT ASSESSMENT**

Title
**EXTENT OF NOISE MITIGATION MEASURES
(SCENARIO FOR EXISTING NSRs)**

Designed	CWK	Eng.Chk.	FY
Drawn	MNH	Coordination	FY
Dwg.Chk.	CWK	Approved	AFK
Scale	Project	Status	
1:1500@A1	248137	PRE	
Drawing No.	CAD File	Rev	
	K:\248137\report\env\elo_00223\FIGURE 3-25.dgn	F	

© Mott MacDonald Hong Kong Limited
This document should not be relied on or used in circumstances other than those for which it was originally prepared and for which Mott MacDonald Hong Kong Limited was commissioned. Mott MacDonald Hong Kong Limited accepts no responsibility for this document to any other party other than the person by whom it was commissioned.



KEY PLAN

LEGEND:

- ASSESSMENT AREA OF CONSTRUCTION PHASE
- ASSESSMENT AREA OF OPERATIONAL PHASE
- NSR2** NOISE SENSITIVE RECEIVER (AIR-BORNE)
- FACADE FACING
- SEMI-ENCLOSURE COVERING NEAREST TRACK

F	JUN 10	MING	ISSUE TO MTRC & EPD	FN	AFK
E	APR 10	MING	ISSUE TO MTRC & EPD	CWK	AFK
D	DEC 09	MING	ISSUE TO MTRC & EPD	CWK	AFK
C	NOV 09	MING	ISSUE TO MTRC & EPD	CWK	AFK
B	SEP 09	MING	ISSUE TO MTRC	CWK	AFK
A	JUL 09	MM	ISSUE TO MTRC	CWK	AFK
Rev	Date	Drawn	Description	Ch'kd	App'd

Client

20/F Two Landmark East
100 How Ming Street
Kwan Tong, Kowloon
Hong Kong
T +852 2828 5757
F +852 2827 1823
www.mottmac.com.hk

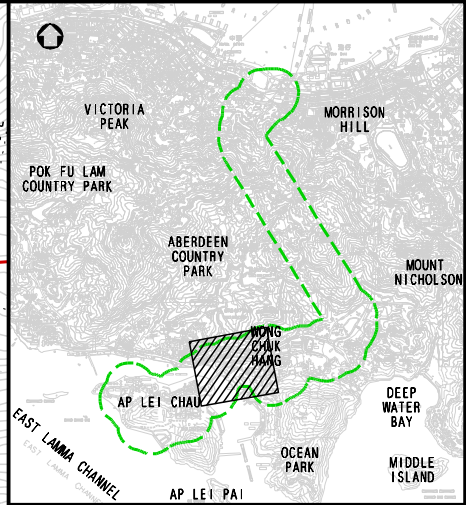
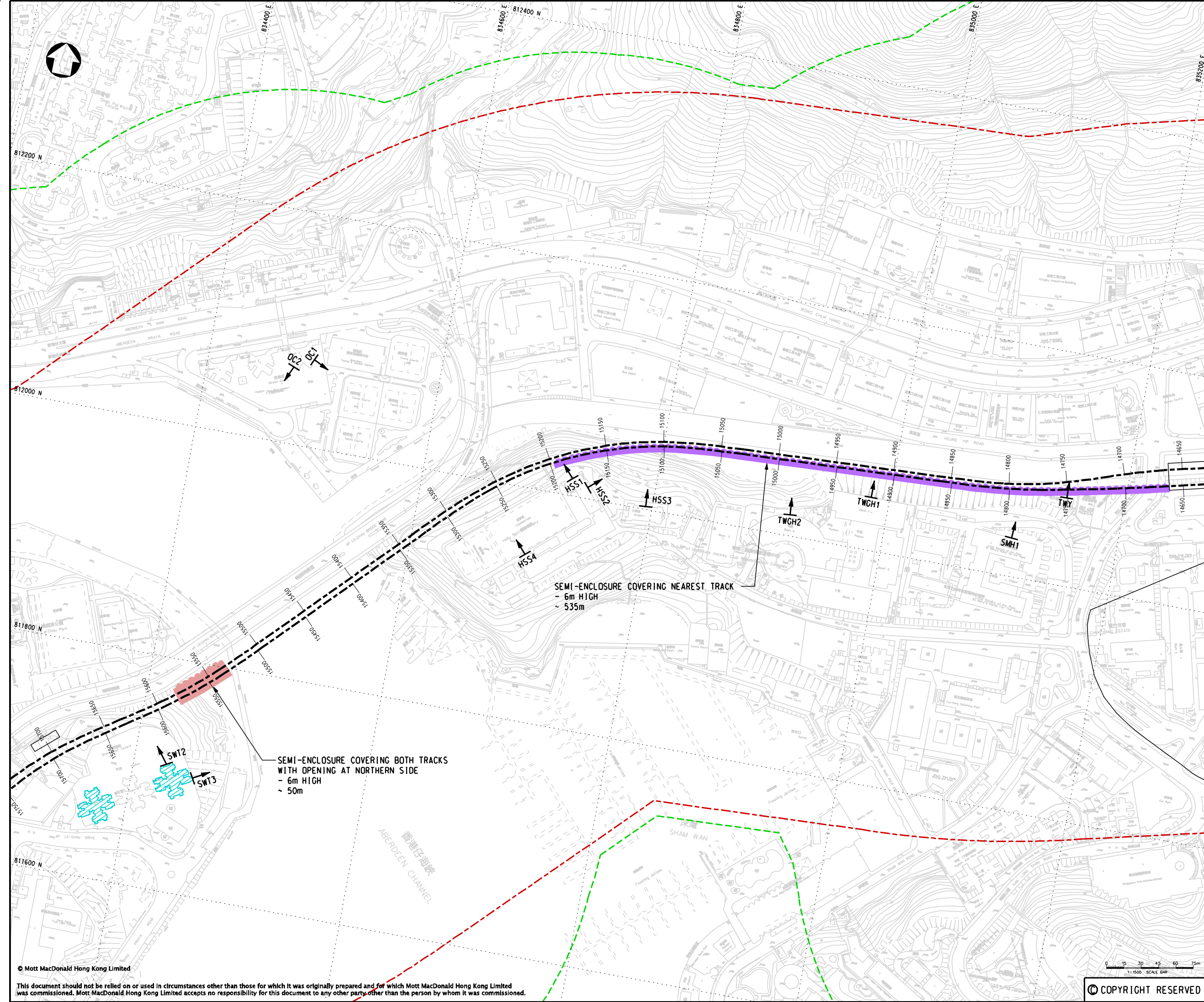
Project
**CONSULTANCY AGREEMENT NO. NEX/2301
SOUTH ISLAND LINE (EAST)
ENVIRONMENTAL IMPACT ASSESSMENT**

Title
**EXTENT OF NOISE MITIGATION MEASURES
(SCENARIO FOR EXISTING NSRs)**

Designed	CWK	Eng.Chk.	FY
Drawn	MNH	Coordination	FY
Dwg.Chk.	CWK	Approved	AFK
Scale	Project	Status	
1:1500@A1	248137	PRE	
Drawing No.	CAD File	Rev	
	1\248137\report\env\elo_1100223\FIGURE 3-26.dgn	F	

© COPYRIGHT RESERVED

FIGURE 3.26



KEY PLAN

LEGEND:

- ASSESSMENT AREA OF CONSTRUCTION PHASE
- ASSESSMENT AREA OF OPERATIONAL PHASE
- NSR NOISE SENSITIVE RECEIVER (AIR-BORNE)
- ↑ FACADE FACING
- NOISE SENSITIVE RECEIVER (GROUND-BORNE)
- SEMI-ENCLOSURE COVERING BOTH TRACKS WITH OPENING AT NORTHERN SIDE
- SEMI-ENCLOSURE COVERING NEAREST TRACK

Rev	Date	Drawn	Description	Ch'kd	App'd
F	JUN 10	MING	ISSUE TO MTRC & EPD	FN	AFK
E	APR 10	MING	ISSUE TO MTRC & EPD	CWK	AFK
D	DEC 09	MING	ISSUE TO MTRC & EPD	CWK	AFK
C	NOV 09	MING	ISSUE TO MTRC & EPD	CWK	AFK
B	SEP 09	MING	ISSUE TO MTRC	CWK	AFK
A	JUL 09	MM	ISSUE TO MTRC	CWK	AFK

Rev	Date	Drawn	Description	Ch'kd	App'd
F	JUN 10	MING	ISSUE TO MTRC & EPD	FN	AFK
E	APR 10	MING	ISSUE TO MTRC & EPD	CWK	AFK
D	DEC 09	MING	ISSUE TO MTRC & EPD	CWK	AFK
C	NOV 09	MING	ISSUE TO MTRC & EPD	CWK	AFK
B	SEP 09	MING	ISSUE TO MTRC	CWK	AFK
A	JUL 09	MM	ISSUE TO MTRC	CWK	AFK



Project
CONSULTANCY AGREEMENT NO. NEX/2301
SOUTH ISLAND LINE (EAST)
ENVIRONMENTAL IMPACT ASSESSMENT

Title
EXTENT OF NOISE MITIGATION MEASURES
(SCENARIO FOR EXISTING NSRs)

Designed	CWK	Eng.Chk.	FY
Drawn	MNH	Coordination	FY
Dwg.Chk.	CWK	Approved	AFK
Scale	Project	Status	
1:1500@A1	248137	PRE	
Drawing No.	CAD File	Rev	
	\\248137\report\env\elo_000223\FIGURE 3-27.dgn	F	

© COPYRIGHT RESERVED

FIGURE 3.27

© Mott MacDonald Hong Kong Limited
This document should not be relied on or used in circumstances other than those for which it was originally prepared and for which Mott MacDonald Hong Kong Limited was commissioned. Mott MacDonald Hong Kong Limited accepts no responsibility for this document to any other party other than the person by whom it was commissioned.