

**KEY PLAN**

**LEGEND:**

- ASSESSMENT AREA OF CONSTRUCTION PHASE
- ASSESSMENT AREA OF OPERATIONAL PHASE
- NSR2** NOISE SENSITIVE RECEIVER (AIR-BORNE)
- ↑** FACADE FACING
- SEMI-ENCLOSURE COVERING BOTH TRACKS WITH OPENING AT SOUTHERN SIDE

C	JUN 10	MING	ISSUE TO MTRC & EPD	FN	AFK
B	APR 10	MING	ISSUE TO MTRC & EPD	CWK	AFK
A	DEC 09	MING	ISSUE TO MTRC & EPD	CWK	AFK
Rev	Date	Drawn	Description	Ch'kd	App'd

Client

20/F Two Landmark East  
100 How Ming Street  
Kwan Tong, Kowloon  
Hong Kong  
T +852 2828 5757  
F +852 2827 1823  
www.mottmac.com.hk

Project  
**CONSULTANCY AGREEMENT NO. NEX/2301  
SOUTH ISLAND LINE (EAST)  
ENVIRONMENTAL IMPACT ASSESSMENT**

Title  
**EXTENT OF NOISE MITIGATION MEASURES  
(SCENARIO FOR EXISTING AND PLANNED  
NSRs)**

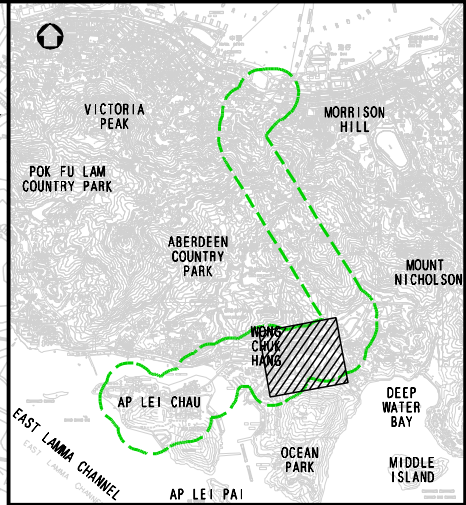
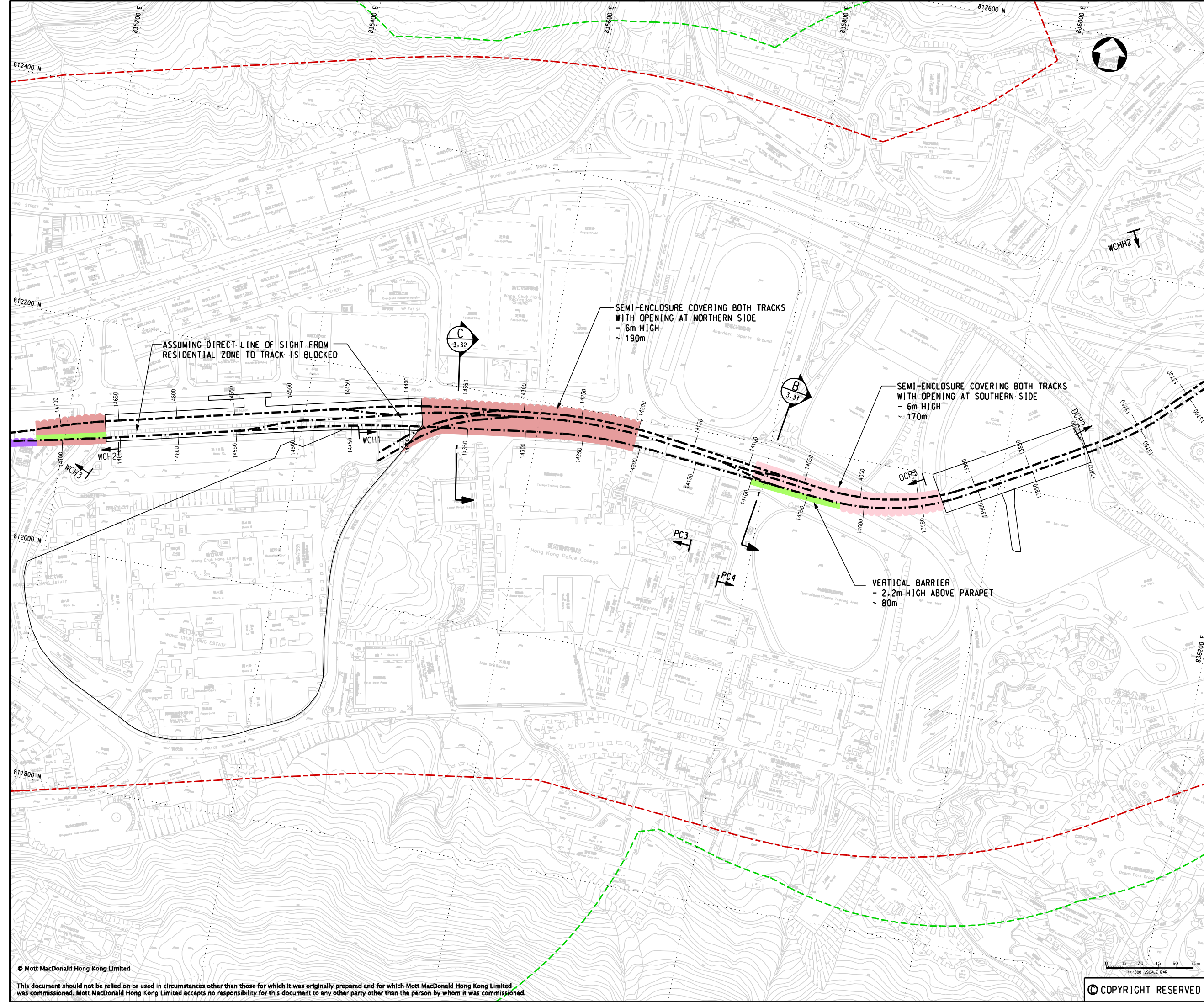
Designed	CWK	Eng.Chk.	FY
Drawn	MNH	Coordination	FY
Dwg.Chk.	CWK	Approved	AFK
Scale	Project	Status	
1:1500@A1	248137	PRE	
Drawing No.	CAD File	Rev	
	\\248137\report\env\elo_00223\FIGURE 3-28.dgn		

© Mott MacDonald Hong Kong Limited  
This document should not be relied on or used in circumstances other than those for which it was originally prepared and for which Mott MacDonald Hong Kong Limited was commissioned. Mott MacDonald Hong Kong Limited accepts no responsibility for this document to any other party other than the person by whom it was commissioned.

COPYRIGHT RESERVED

FIGURE 3.28

C



**KEY PLAN**

**LEGEND:**

- ASSESSMENT AREA OF CONSTRUCTION PHASE
- ASSESSMENT AREA OF OPERATIONAL PHASE
- SNR2** NOISE SENSITIVE RECEIVER (AIR-BORNE)
- T** FACADE FACING
- VERTICAL BARRIER
- SEMI-ENCLOSURE COVERING BOTH TRACKS WITH OPENING AT SOUTHERN SIDE
- SEMI-ENCLOSURE COVERING BOTH TRACKS WITH OPENING AT NORTHERN SIDE

C	JUN 10	MING	ISSUE TO MTRC & EPD	FN	AFK
B	APR 10	MING	ISSUE TO MTRC & EPD	CWK	AFK
A	DEC 09	MING	ISSUE TO MTRC & EPD	CWK	AFK
Rev	Date	Drawn	Description	Ch'kd/App'd	

Client

20/F Two Landmark East  
100 How Ming Street  
Kwan Tong, Kowloon  
Hong Kong  
T +852 2828 6767  
F +852 2827 1823  
W www.mottmac.com.hk

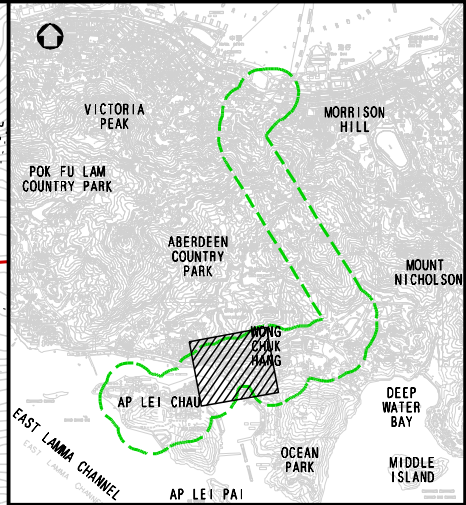
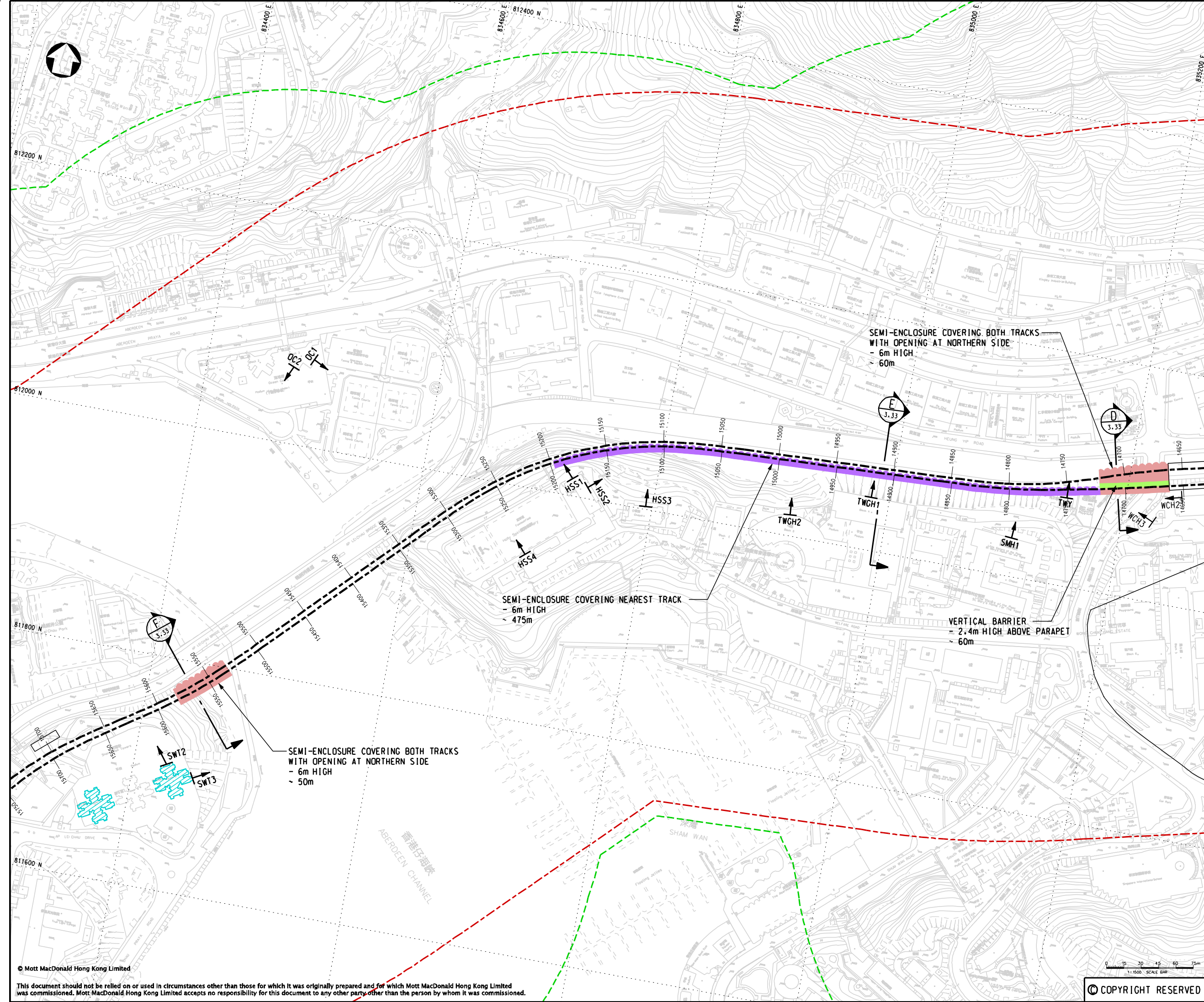
Project  
**CONSULTANCY AGREEMENT NO. NEX/2301  
SOUTH ISLAND LINE (EAST)  
ENVIRONMENTAL IMPACT ASSESSMENT**

Title  
**EXTENT OF NOISE MITIGATION MEASURES  
(SCENARIO FOR EXISTING AND PLANNED  
NSRs)**

Designed	CWK	Eng.Chk.	FY
Drawn	MNH	Coordination	FY
Dwg.Chk.	CWK	Approved	AFK
Scale	Project	Status	
1:1500@A1	248137	PRE	
Drawing No.	CAD File	Rev	
	J:\248137\REPORT\ENV\EIA_000223\FIGURE 3-29.dgn	C	

© COPYRIGHT RESERVED

FIGURE 3.29



**KEY PLAN**

**LEGEND:**

- ASSESSMENT AREA OF CONSTRUCTION PHASE
- ASSESSMENT AREA OF OPERATIONAL PHASE
- NOISE SENSITIVE RECEIVER (AIR-BORNE)
- FACADE FACING
- NOISE SENSITIVE RECEIVER (GROUND-BORNE)
- SEMI-ENCLOSURE COVERING BOTH TRACKS WITH OPENING AT NORTHERN SIDE
- SEMI-ENCLOSURE COVERING NEAREST TRACK
- VERTICAL BARRIER

C	JUN 10	MING	ISSUE TO MTRC & EPD	FN	AFK
B	APR 10	MING	ISSUE TO MTRC & EPD	CWK	AFK
A	DEC 09	MING	ISSUE TO MTRC & EPD	CWK	AFK
Rev	Date	Drawn	Description	Ch'kd/App'd	

Client

20/F Two Landmark East  
100 How Ming Street  
Kwan Tong, Kowloon  
Hong Kong  
T +852 2828 6767  
F +852 2827 1823  
www.mottmac.com.hk

Project

**CONSULTANCY AGREEMENT NO. NEX/2301**  
**SOUTH ISLAND LINE (EAST)**  
**ENVIRONMENTAL IMPACT ASSESSMENT**

Title

**EXTENT OF NOISE MITIGATION MEASURES**  
**(SCENARIO FOR EXISTING AND PLANNED**  
**NSRs)**

Designed	CWK	Eng.Chk.	FY
Drawn	MNH	Coordination	FY
Dwg.Chk.	CWK	Approved	AFK
Scale	Project	Status	
1:1500@A1	248137	PRE	
Drawing No.	CAD File	Rev	
	J:\248137\REPORT\ENV\EIA_000223\FIGURE 3-30.dgn	C	

© COPYRIGHT RESERVED

FIGURE 3.30