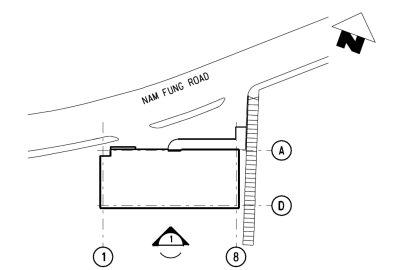


ELEVATION ①

Nam Fung Portal Ventilation Building



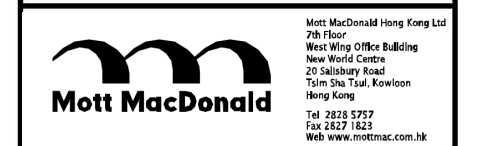
KEY LOCATION PLAN

LEGEND

- EXHAUST AIR
- FRESH AIR INTAKE

- CORRIDOR
- ROOM NAME
- ROOM NO

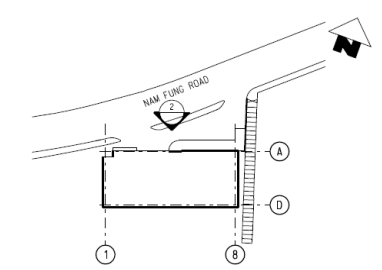
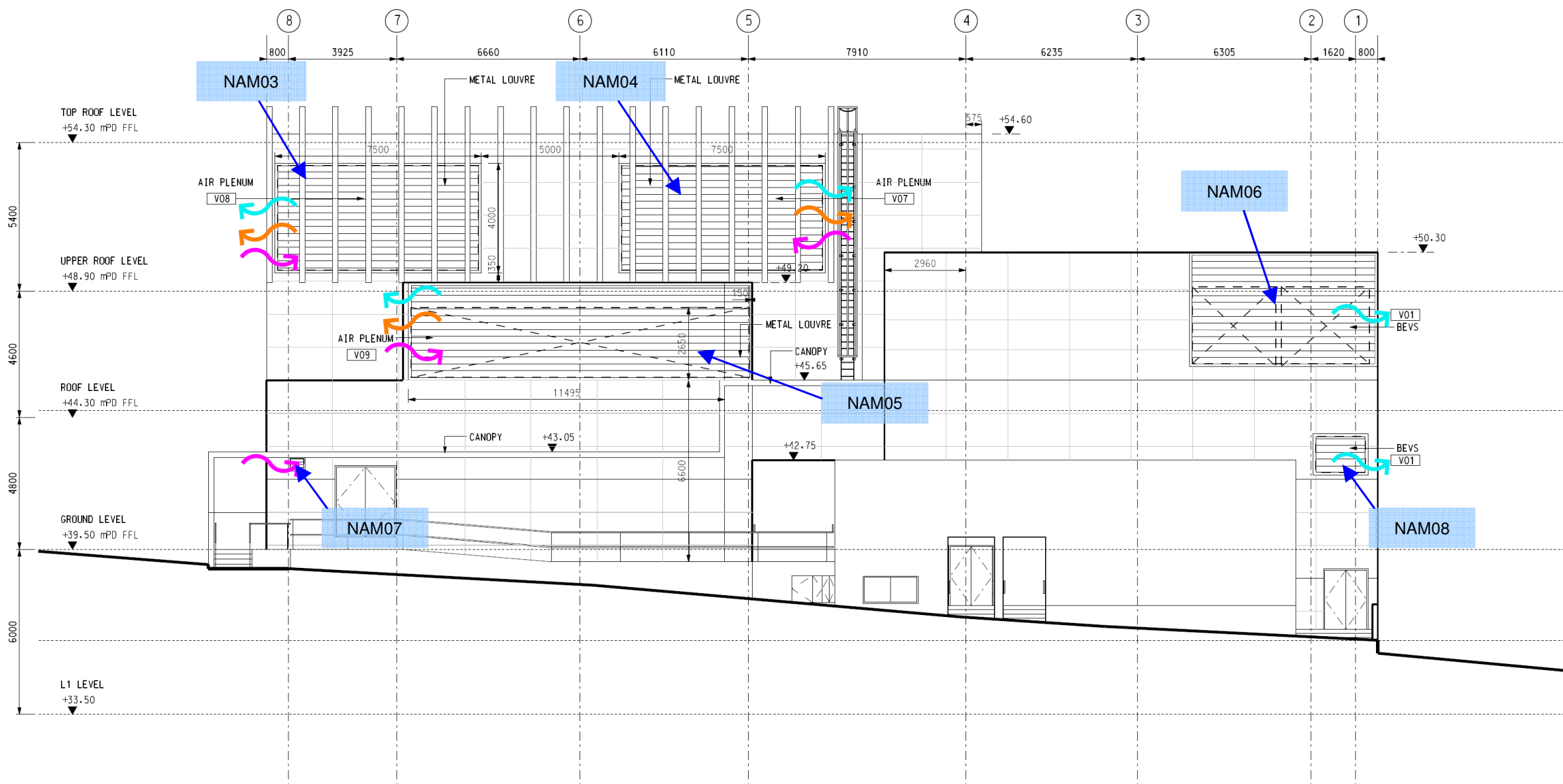
Rev	Date	Drawn/Description	Chk'd/App'd



Project
CONSULTANCY AGREEMENT NO. MEX/2301
SOUTH ISLAND LINE (EAST)
ENVIRONMENTAL IMPACT ASSESSMENT

Title
Location of Fixed Plant at
Nam Fung Portal Ventilation
Building

Designed		Eng.Chk	
Drawn		Coordination	
Dwg.Chk		Approved	
Scale	Project	Status	
	CAD File		
	J:\24857\PROJECT\BIM\WV\WV\Bldgn		
Drawing No.		Rev	



KEY LOCATION PLAN

LEGEND

- EXHAUST AIR
- FRESH AIR INTAKE
- SMOKE DISCHARGE
- VENT IDENTIFICATION

ELEVATION (2)

Nam Fung Portal Ventilation Building

Rev	Date	Drawn/Description	Chk'd/Approved

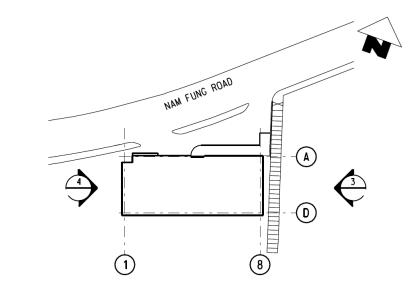
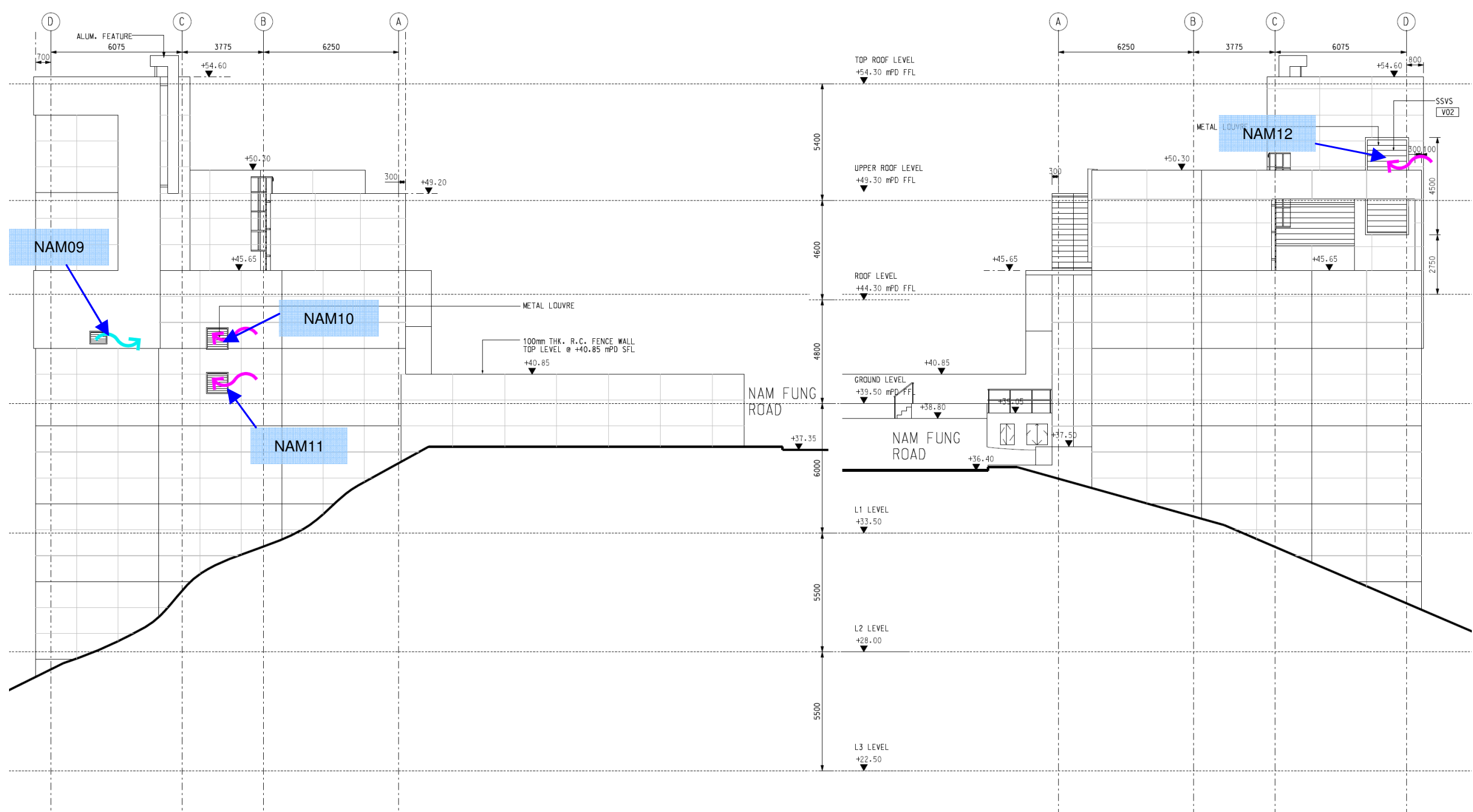


Mott MacDonald
 Mott MacDonald Hong Kong Ltd
 7th Floor
 West Wing Office Building
 New World Centre
 20 Salisbury Road
 Tsim Sha Tsui, Kowloon
 Hong Kong
 Tel: 2828 5757
 Fax: 2827 1823
 Web: www.mottmac.com.hk

Project
CONSULTANCY AGREEMENT NO. MEX/2301
SOUTH ISLAND LINE (EAST)
ENVIRONMENTAL IMPACT ASSESSMENT

Title
 Location of Fixed Plant at
 Nam Fung Portal Ventilation
 Building

Designed	Eng.Chk	
Drawn	Coordination	
Dwg.Chk	Approved	
Scale	Project	Status
	CAD File	
Drawing No.	JV240374/01/01/01/01/01/01/01	Rev



KEY LOCATION PLAN

- LEGEND
- EXHAUST AIR
 - FRESH AIR INTAKE
 - VENT IDENTIFICATION

ELEVATION 3

ELEVATION 4

Nam Fung Portal Ventilation Building

Rev	Date	Drawn/Description	Chk'd/Approved



Mott MacDonald
 Mott MacDonald Hong Kong Ltd
 7th Floor
 West Wing Office Building
 New World Centre
 20 Salisbury Road
 Tsim Sha Tsui, Kowloon
 Hong Kong
 Tel: 2828 5757
 Fax: 2827 1823
 Web: www.mottmac.com.hk

Project
CONSULTANCY AGREEMENT NO. MEX/2301
SOUTH ISLAND LINE (EAST)
ENVIRONMENTAL IMPACT ASSESSMENT

Title
 Location of Fixed Plant at
 Nam Fung Portal Ventilation
 Building

Designed	Eng.Chk		
Drawn	Coordination		
Dwg.Chk	Approved		
Scale	Project		Status
	CAD File		
Drawing No.			Rev