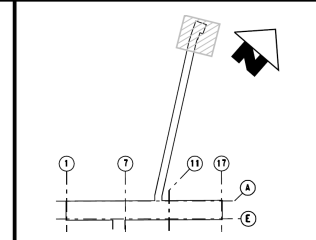




Lei Tung Station
Entrance A



Rev	Date	Drawn/Description	Checked/Approved



Mott MacDonald

20/F Two Landmark East
100 How Ming Street
Kowloon, Kowloon
Hong Kong
T +852 2268 5157
F +852 2267 8923
www.mottmac.com.hk

Project
**CONSULTANCY AGREEMENT NO. MEK/2301
SOUTH ISLAND LINE (EAST)
ENVIRONMENTAL IMPACT ASSESSMENT**

Title
**Location of Fixed Plant at
Lei Tung Station and
Entrances**

Design		Eng. Chk.	
Drawn		Coordination	
Design Chk.		Approved	
Scale		Project	Status

COPYRIGHT RESERVED

Figure 3.40.3

© Mott MacDonald Hong Kong Limited

This document should not be relied on or used in circumstances other than those for which it was originally prepared and for which Mott MacDonald Hong Kong Limited was commissioned. Mott MacDonald Hong Kong Limited accepts no responsibility for this document to any other party other than the person by whom it was commissioned.