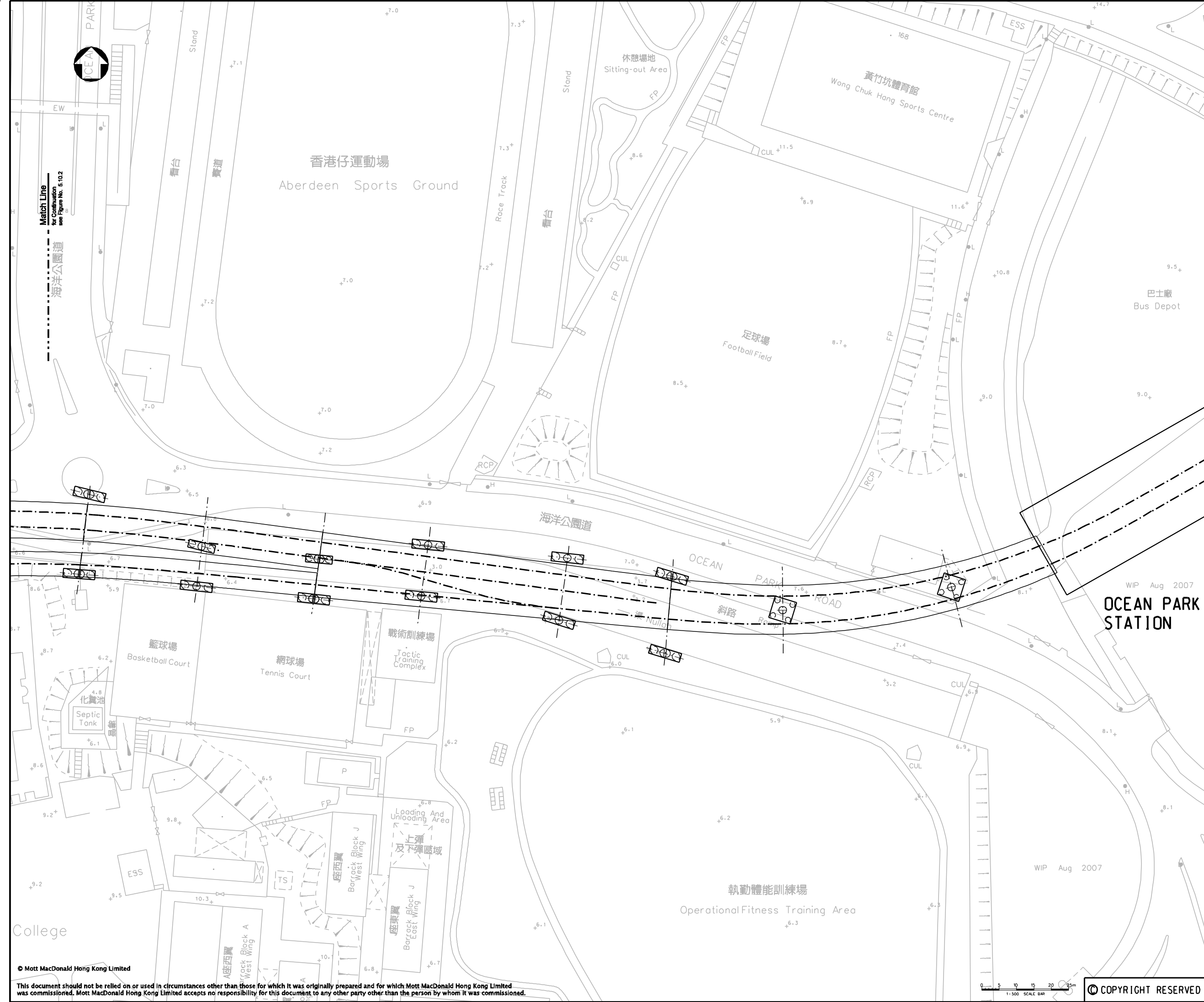


REMARK:
LOCATIONS OF PIERS ARE INDICATIVE ONLY
AND SUBJECT TO REFINEMENT.



WIP Aug 2007
OCEAN PARK STATION

P1	DEC 09	MING	ISSUE TO MTRC & EPD	FY	AFK
Rev	Date	Drawn	Description	Ch'kd/App'd	

Client



Mott MacDonald Hong Kong Ltd
7th Floor
West Wing Office Building
New World Centre
20 Salisbury Road
Tsim Sha Tsui, Kowloon
Hong Kong
Tel: 2828 5757
Fax: 2827 1823
Web: www.mottmac.com.hk

Project

**CONSULTANCY AGREEMENT NO. NEX/2301
SOUTH ISLAND LINE (EAST)
ENVIRONMENTAL IMPACT ASSESSMENT**

Title

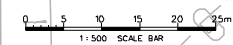
**ABERDEEN CHANNEL TO
OCEAN PARK STATION
FOUNDATION LAYOUT PLAN
(SHEET 1 OF 4)**

Designed	FY	Eng.Chk.	FY
Drawn	MING	Coordination	FY
Dwg.Chk.	FY	Approved	AFK

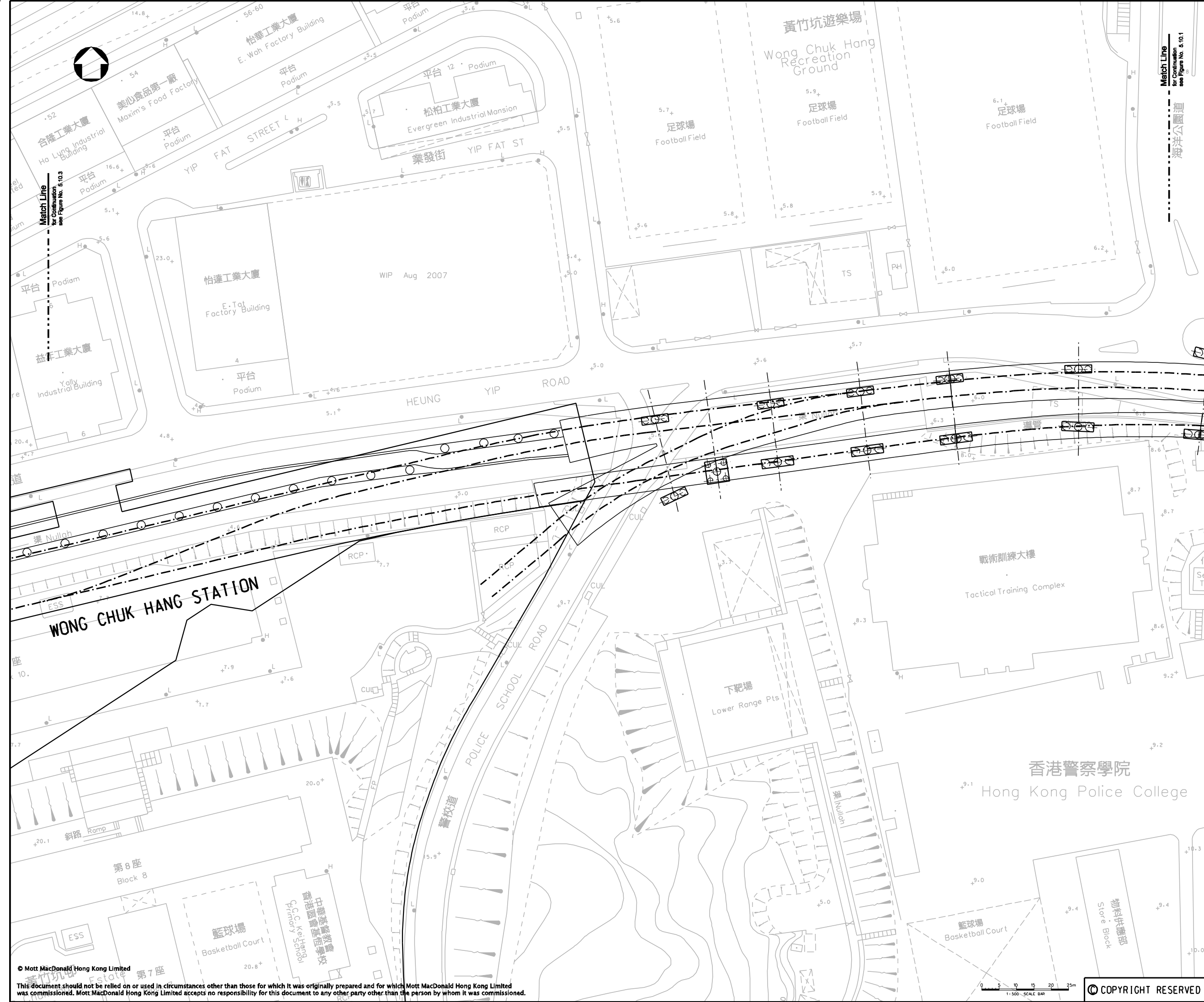
Scale	Project	Status
1:500@A1	248137	PRE
CAD File		Rev
K:\248137\report\env\elo_1092301\ch5\FIG_5.0-L.dgn		P1

Drawing No. **FIGURE 5.10.1**

© COPYRIGHT RESERVED



© Mott MacDonald Hong Kong Limited
This document should not be relied on or used in circumstances other than those for which it was originally prepared and for which Mott MacDonald Hong Kong Limited was commissioned. Mott MacDonald Hong Kong Limited accepts no responsibility for this document to any other party other than the person by whom it was commissioned.



REMARK:
LOCATIONS OF PIERS ARE INDICATIVE ONLY
AND SUBJECT TO REFINEMENT.

P1	DEC 09	MING	ISSUE TO MTRC & EPD	FY	AFK
Rev	Date	Drawn	Description	Ch'kd/App'd	

Client



Mott MacDonald Hong Kong Ltd
7th Floor
West Wing Office Building
New World Centre
20 Salisbury Road
Tsim Sha Tsui, Kowloon
Hong Kong
Tel: 2828 5757
Fax: 2827 1823
Web: www.mottmac.com.hk

Project

CONSULTANCY AGREEMENT NO. NEX/2301
SOUTH ISLAND LINE (EAST)
ENVIRONMENTAL IMPACT ASSESSMENT

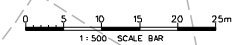
Title

ABERDEEN CHANNEL TO
OCEAN PARK STATION
FOUNDATION LAYOUT PLAN
(SHEET 2 OF 4)

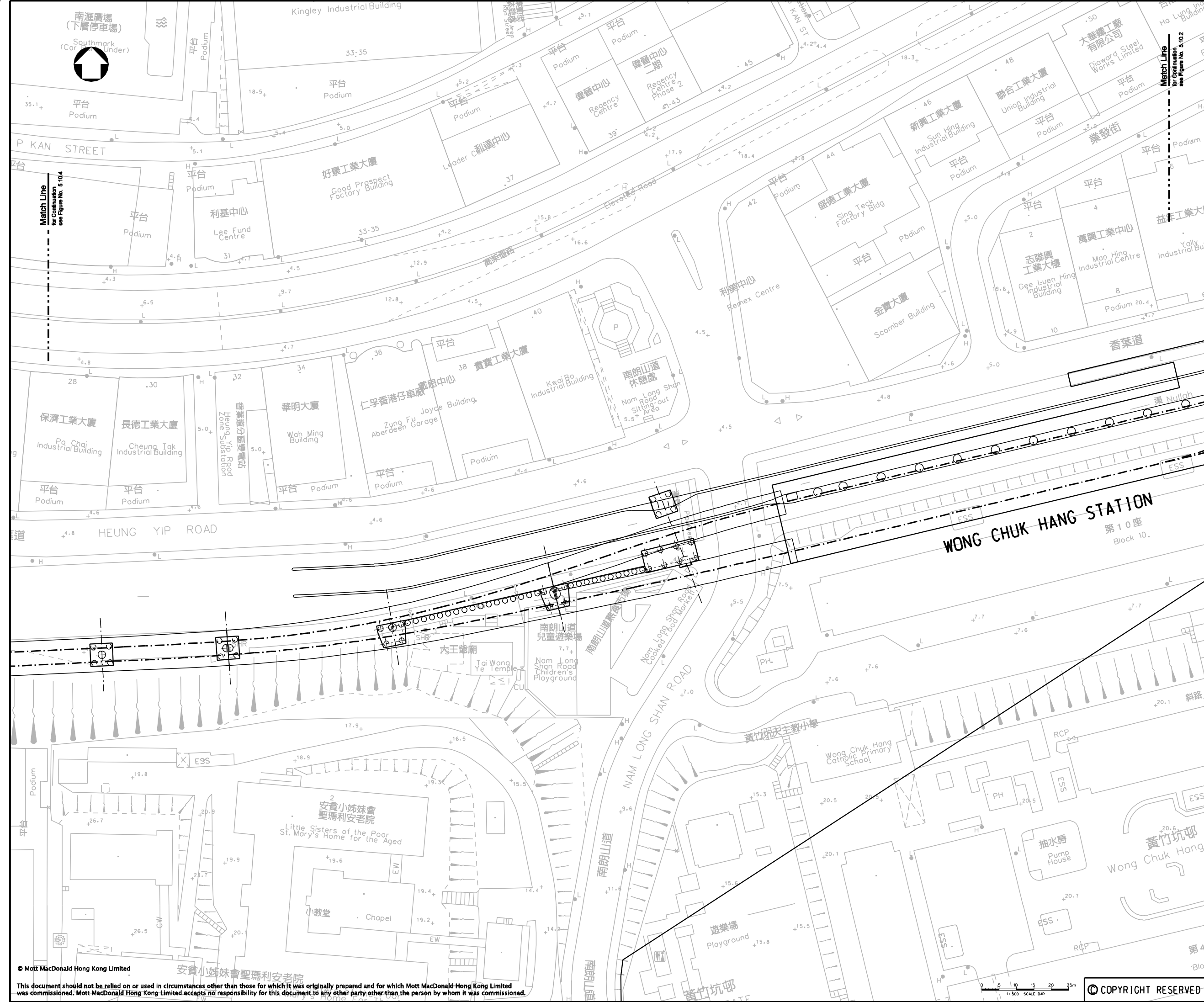
Designed	FY	Eng.Chk.	FY
Drawn	MING	Coordination	FY
Dwg.Chk.	FY	Approved	AFK

Scale	Project	Status
1:500@A1	248137	PRE
	CAD File	Rev
	K:\248137\report\env\elo_092301\ch05\FIG_5.0-2.dgn	P1

Drawing No. FIGURE 5.10.2



© COPYRIGHT RESERVED



REMARK:
LOCATIONS OF PIERS ARE INDICATIVE ONLY AND SUBJECT TO REFINEMENT.

P1	DEC 09	MING	ISSUE TO MTRC & EPD	FY	AFK
Rev	Date	Drawn	Description	Ch'kd	App'd

Client




Mott MacDonald Hong Kong Ltd
7th Floor
West Wing Office Building
New World Centre
20 Salisbury Road
Tsim Sha Tsui, Kowloon
Hong Kong
Tel 2828 5757
Fax 2827 1823
Web www.mottmac.com.hk

Project
**CONSULTANCY AGREEMENT NO. NEX/2301
SOUTH ISLAND LINE (EAST)
ENVIRONMENTAL IMPACT ASSESSMENT**

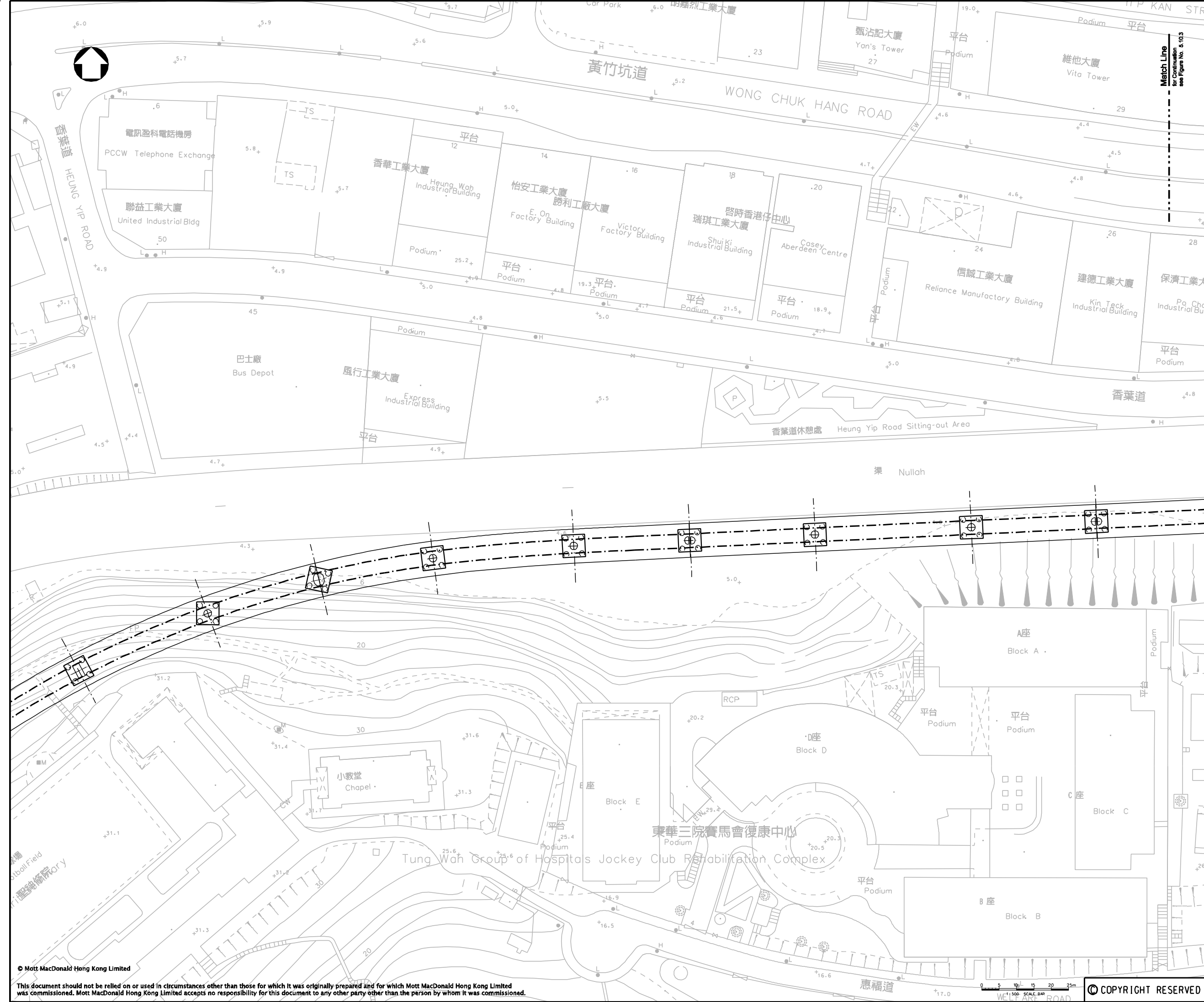
Title
**ABERDEEN CHANNEL TO
OCEAN PARK STATION
FOUNDATION LAYOUT PLAN
(SHEET 3 OF 4)**

Designed	FY	Eng.Chk.	FY
Drawn	MING	Coordination	FY
Dwg.Chk.	FY	Approved	AFK

Scale	Project	Status
1:500@A1	248137	PRE
Drawing No.	CAD File	Rev
	K:\248137\report\env\elo_1092301\ch5\FIG_5.10.3.dgn	

© COPYRIGHT RESERVED

© Mott MacDonald Hong Kong Limited
This document should not be relied on or used in circumstances other than those for which it was originally prepared and for which Mott MacDonald Hong Kong Limited was commissioned. Mott MacDonald Hong Kong Limited accepts no responsibility for this document to any other party other than the person by whom it was commissioned.



REMARK:
 LOCATIONS OF PIERS ARE INDICATIVE ONLY
 AND SUBJECT TO REFINEMENT.

P1	DEC 09	MING	ISSUE TO MTRC & EPD	FY	AFK
Rev	Date	Drawn	Description	Ch'kd/App'd	

Client



Mott MacDonald Hong Kong Ltd
 7th Floor
 West Wing Office Building
 New World Centre
 20 Salisbury Road
 Tsim Sha Tsui, Kowloon
 Hong Kong
 Tel: 2828 5757
 Fax: 2827 1823
 Web: www.mottmac.com.hk

Project
CONSULTANCY AGREEMENT NO. NEX/2301
SOUTH ISLAND LINE (EAST)
ENVIRONMENTAL IMPACT ASSESSMENT

Title
ABERDEEN CHANNEL TO
OCEAN PARK STATION
FOUNDATION LAYOUT PLAN
 (SHEET 4 OF 4)

Designed	FY	Eng.Chk.	FY
Drawn	MING	Coordination	FY
Dwg.Chk.	FY	Approved	AFK

Scale	Project	Status
1:500@A1	248137	PRE
	CAD File	Rev
	K:\248137\report\env\elo_092301\ch5\FIG_5.10-4.dgn	

Drawing No. **FIGURE 5.10.4** P1

© Mott MacDonald Hong Kong Limited
 This document should not be relied on or used in circumstances other than those for which it was originally prepared and for which Mott MacDonald Hong Kong Limited was commissioned. Mott MacDonald Hong Kong Limited accepts no responsibility for this document to any other party other than the person by whom it was commissioned.

© COPYRIGHT RESERVED