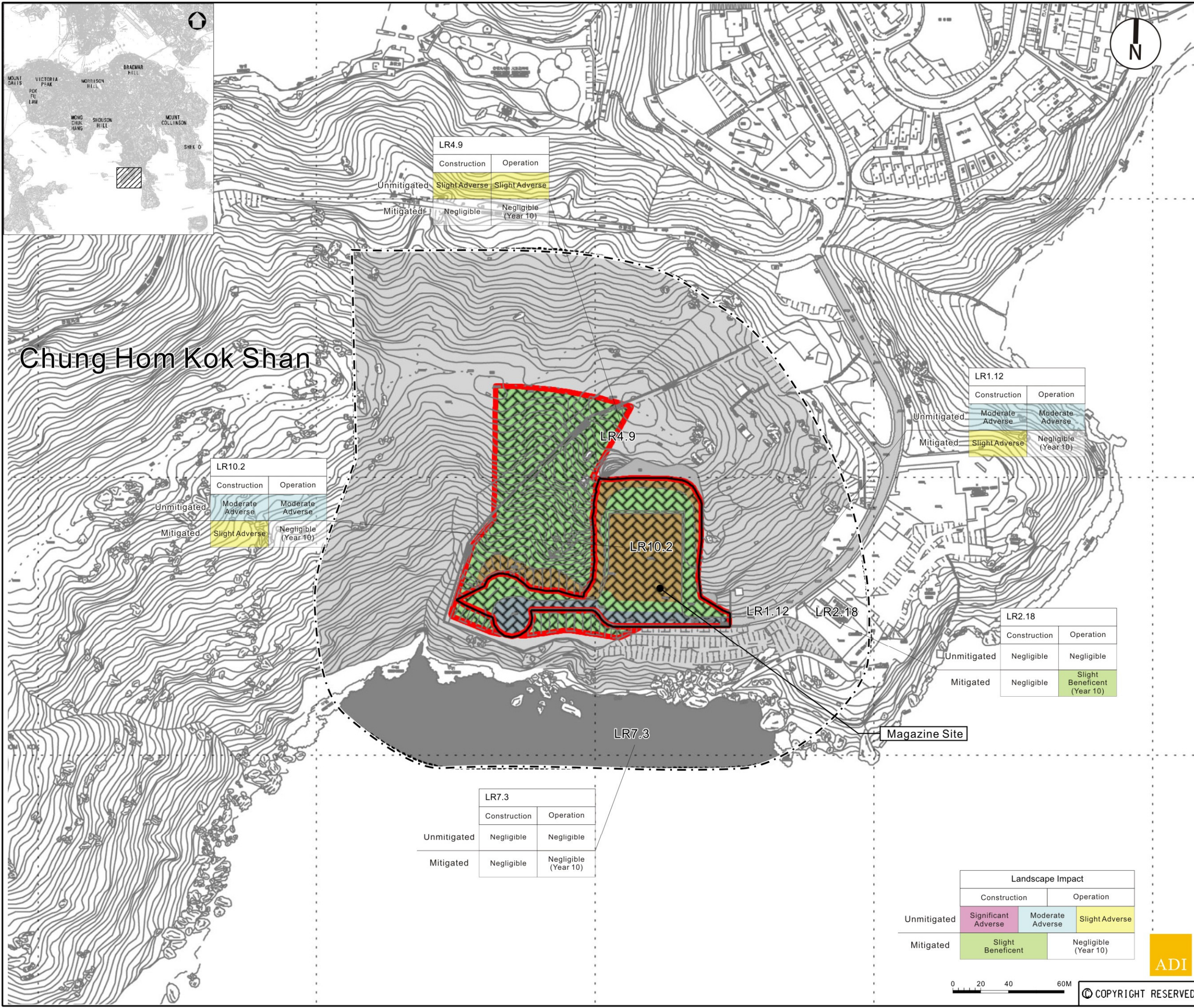


# Chung Hom Kok Shan



LR4.9		
	Construction	Operation
Unmitigated	Slight Adverse	Slight Adverse
Mitigated	Negligible	Negligible (Year 10)

LR10.2		
	Construction	Operation
Unmitigated	Moderate Adverse	Moderate Adverse
Mitigated	Slight Adverse	Negligible (Year 10)

LR1.12		
	Construction	Operation
Unmitigated	Moderate Adverse	Moderate Adverse
Mitigated	Slight Adverse	Negligible (Year 10)

LR2.18		
	Construction	Operation
Unmitigated	Negligible	Negligible
Mitigated	Negligible	Slight Beneficent (Year 10)

LR7.3		
	Construction	Operation
Unmitigated	Negligible	Negligible
Mitigated	Negligible	Negligible (Year 10)

Landscape Impact			
	Construction		Operation
Unmitigated	Significant Adverse	Moderate Adverse	Slight Adverse
Mitigated	Slight Beneficent		Negligible (Year 10)

### Legend

- Proposed SIL(E) Alignment
- 100M Study Boundary for Landscape Impact Assessment
- Proposed SIL(E) Station
- Proposed Works Site (Ground Level and Underground)
- Proposed Works Site (Underground)
- Proposed Works Area (Ground Level)

### LR3.1 Landscape Resources Sub-group

- LR1 Major Road and Highway
- LR2 Developed Area
- LR3 Natural Woodland
- LR4 Mixed Woodland
- LR5 Roadside Amenity
- LR6 Grassland/Shrubland Mosaic
- LR7 Waterbody
- LR8 Modified Watercourse
- LR9 Marshland
- LR10 Waste Land / Open Field
- LR11 Agricultural Land
- LR12 Open Space

Note: Only affect cut area show in colours.

Rev	Date	Drawn/Description	Ch'kd/App'd



Project  
**CONSULTANCY AGREEMENT NO. NEX/2301**  
**SOUTH ISLAND LINE (EAST)**  
**ENVIRONMENTAL IMPACT ASSESSMENT**

Title  
**Impact on Landscape Resources**  
**Sheet 13 of 13**

Designed	Drawn	Dwg.Chk.	Scale	Project	CAD File	Status
	EIK	ELK	As Shown			



ADI  
 COPYRIGHT RESERVED

Figure 6.5.13