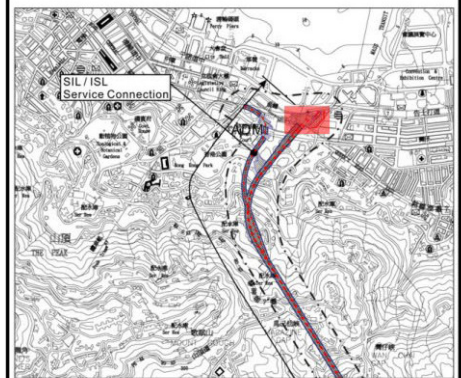


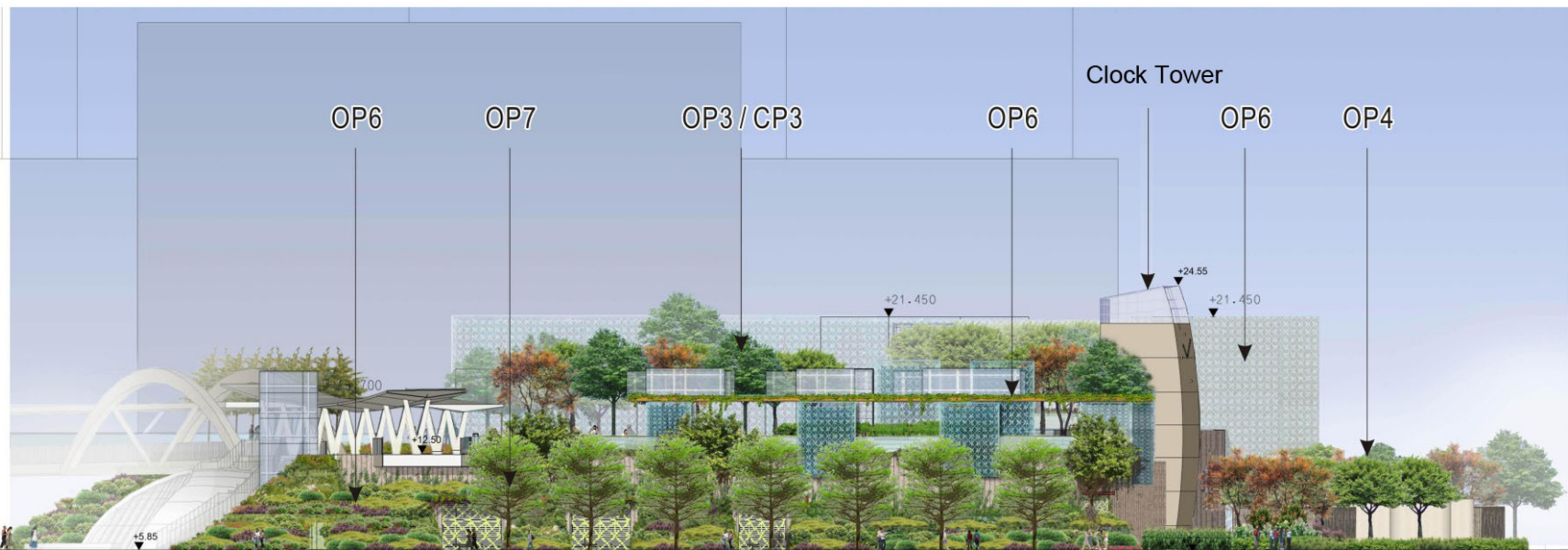
East Elevation

- CP1 Preservation of Existing Vegetation
- CP2 Works Area and Temporary Works Areas
- CP3 Mitigation Planting
- CP4 Transplantation of Existing Trees
- CP5 Coordination with Concurrent Projects
- OP1 Responsive Design of Engineering and Building Structures
- OP2 Roadside and Amenity Planting
- OP3 Compensatory Planting Proposals
- OP4 Treatment of Retaining Wall and Slopes
- OP5 Noise Mitigation Structures
- OP6 Design of Engineering Structures
- OP7 Reinstatement and Creation of Open Spaces and Gardens



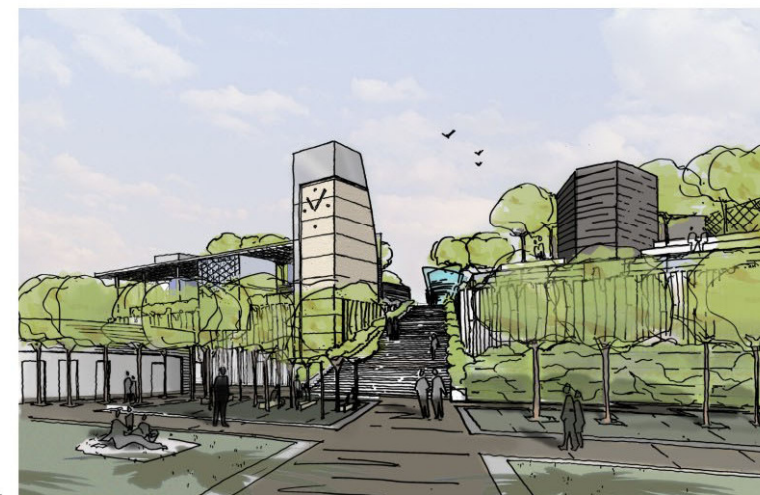
KEY PLAN

Note: Conceptual landscape layouts provided by Detailed Design Consultants are indicative only and subject to change at detailed design stage and seeks for approval from relevant government departments.



South Elevation

View of Clock Tower and Grand Staircase



Rev	Date	Drawn/Description	Ch'k'd/App'd

Client



Mott MacDonald Hong Kong Ltd
7th Floor
West Wing Office Building
New World Centre
20 Salisbury Road
Tsim Sha Tsui, Kowloon
Hong Kong
Tel 2828 5757
Fax 2827 1823
Web www.mottmac.com.hk

Project

CONSULTANCY AGREEMENT NO. NEX/2301
SOUTH ISLAND LINE (EAST)
ENVIRONMENTAL IMPACT ASSESSMENT

Title

Recommended Landscape Mitigation Measures

Designed	Eng.Chk.	Drawn	Dwg.Chk.	Scale	Project	Status
		EIK	ELK	As Shown		
		07/10	07/10		CAD File	
			Approved			CJF 07/10

Drawing No. Rev

Harcourt Garden

© Mott MacDonald Hong Kong Limited

This document should not be relied on or used in circumstances other than those for which it was originally prepared and for which Mott MacDonald Hong Kong Limited was commissioned. Mott MacDonald Hong Kong Limited accepts no responsibility for this document to any other party other than the person by whom it was commissioned.



© COPYRIGHT RESERVED

Figure 6.9.1.2