

KEY PLAN

LEGEND:

- WORKS AREA
- PROPOSED WORKS SITE (GROUND LEVEL AND UNDERGROUND)
- PROPOSED WORKS SITE (UNDERGROUND)
- PROPOSED WORKS AREA (GROUND LEVEL)
- X DUST MONITORING STATIONS

P4	AUG 10	MING	ISSUE TO MTRC & EPD	FY	AFK
P3	MAY 10	MING	ISSUE TO MTRC & EPD	FY	AFK
P2	DEC 09	MING	ISSUE TO MTRC & EPD	FY	AFK
P1	NOV 09	MING	ISSUE TO MTRC	BL	AFK
Rev	Date	Drawn	Description		Ch'kd/App'd

Client

MTR

Mott MacDonald

20/F Two Landmark East
100 How Ming Street
Kwan Tong, Kowloon
Hong Kong
T +852 2828 5757
F +852 2827 1823
W www.mottmac.com.hk

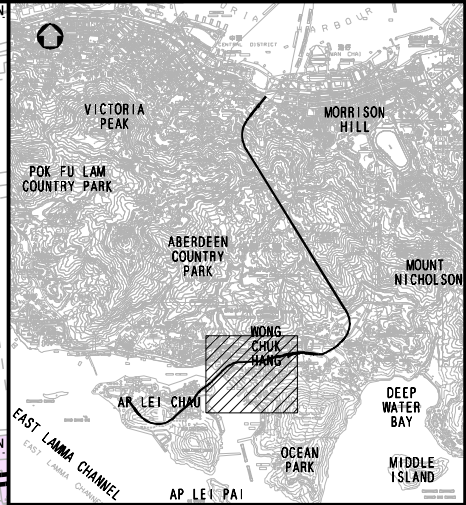
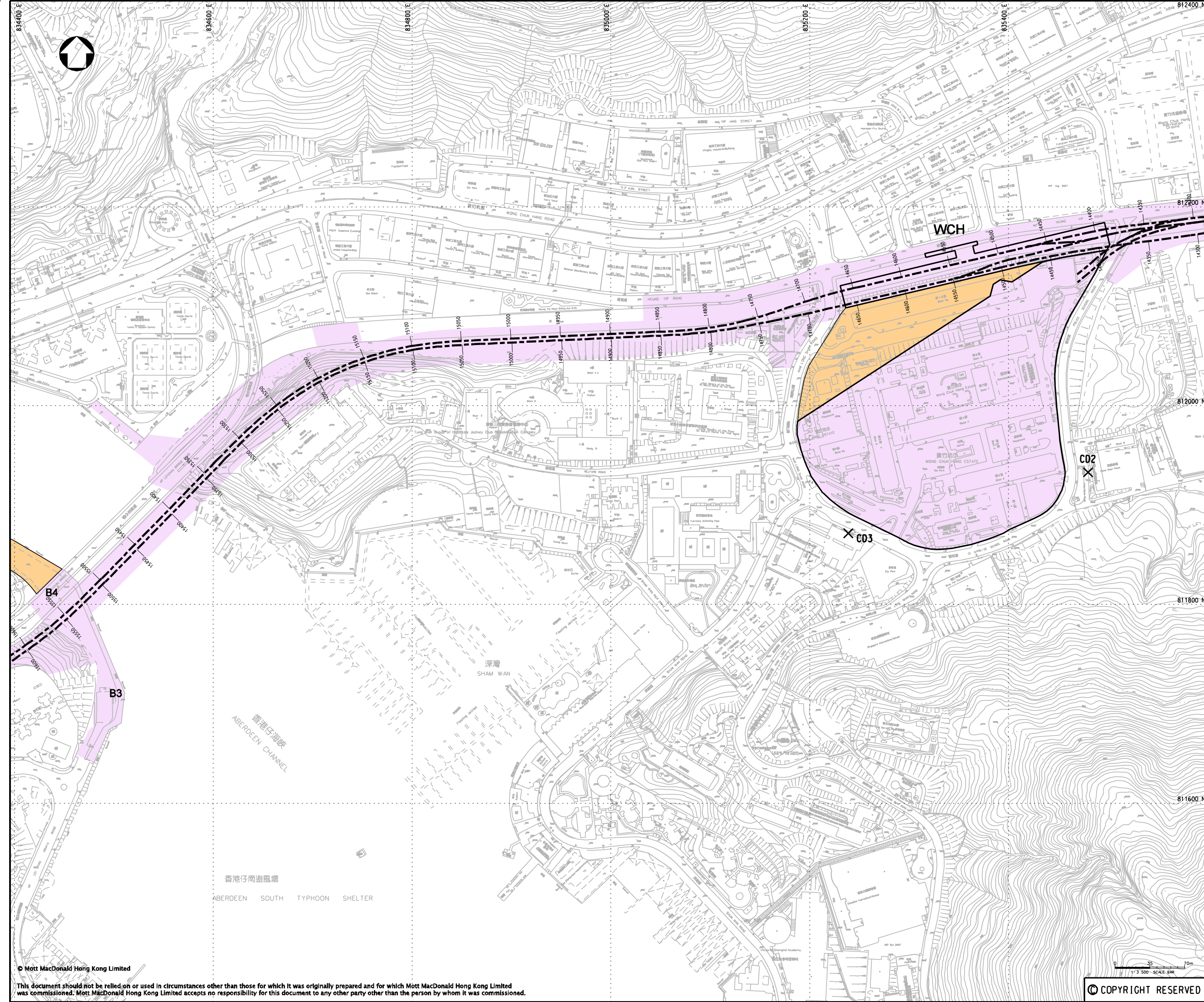
Project

**CONSULTANCY AGREEMENT NO. NEX/2301
SOUTH ISLAND LINE (EAST)
ENVIRONMENTAL IMPACT ASSESSMENT**

Title

**PROPOSED LOCATION OF CONSTRUCTION
AIR QUALITY MONITORING STATIONS**

Designed	EH	Eng.Chk.	FY
Drawn	MING	Coordination	FY
Dwg.Chk.	EH	Approved	AFK
Scale	1:3500@A3	Project	248137
Project	248137	Status	PRE
Drawing No.	FIGURE 9.1.1	Rev	P4



KEY PLAN

LEGEND:

- PROPOSED WORKS SITE (GROUND LEVEL AND UNDERGROUND)
- PROPOSED WORKS AREA (GROUND LEVEL)
- DUST MONITORING STATIONS

P4	AUG 10	MING	ISSUE TO MTRC & EPD	FY	AFK
P3	MAY 10	MING	ISSUE TO MTRC & EPD	FY	AFK
P2	DEC 09	MING	ISSUE TO MTRC & EPD	FY	AFK
P1	NOV 09	MING	ISSUE TO MTRC	BL	AFK

Rev	Date	Drawn	Description	Ch'kd	App'd
-----	------	-------	-------------	-------	-------

Client

20/F Two Landmark East
100 How Ming Street
Kwan Tong, Kowloon
Hong Kong
T +852 2828 5757
F +852 2827 1823
W www.mottmac.com.hk

Project

**CONSULTANCY AGREEMENT NO. NEX/2301
SOUTH ISLAND LINE (EAST)
ENVIRONMENTAL IMPACT ASSESSMENT**

Title

**PROPOSED LOCATION OF CONSTRUCTION
AIR QUALITY MONITORING STATIONS**

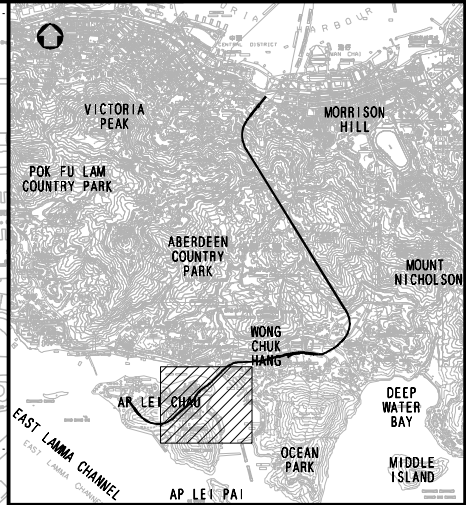
Designed	EH	Eng.Chk.	FY
Drawn	MING	Coordination	FY
Dwg.Chk.	EH	Approved	AFK

Scale	Project	Status
1:3500@A3	248137	PRE
	CAD File	Rev
	\\1248137\work\11\env\mcom\00804\FIGURE	P4

Drawing No.	FIGURE 9.1.2
-------------	--------------



香港仔灣
ABERDEEN HARBOUR



KEY PLAN

LEGEND:

- PROPOSED WORKS SITE (GROUND LEVEL AND UNDERGROUND)
- PROPOSED WORKS SITE (UNDERGROUND)
- PROPOSED WORKS AREA (GROUND LEVEL)
- DUST MONITORING STATIONS

Rev	Date	Drawn	Description	Ch'k'd	App'd
P4	AUG 10	MING	ISSUE TO MTRC & EPD	FY	AFK
P3	MAY 10	MING	ISSUE TO MTRC & EPD	FY	AFK
P2	DEC 09	MING	ISSUE TO MTRC & EPD	FY	AFK
P1	NOV 09	MING	ISSUE TO MTRC	BL	AFK

Client




20/F Two Landmark East
100 How Ming Street
Kwan Tong, Kowloon
Hong Kong
T +852 2828 5757
F +852 2827 1823
W www.mottmac.com.hk

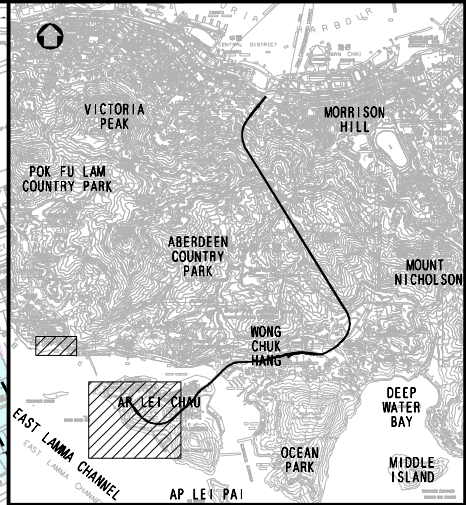
Project
CONSULTANCY AGREEMENT NO. NEX/2301
SOUTH ISLAND LINE (EAST)
ENVIRONMENTAL IMPACT ASSESSMENT

Title
PROPOSED LOCATION OF CONSTRUCTION
AIR QUALITY MONITORING STATIONS

Designed	EH	Eng.Chk.	FY
Drawn	MING	Coordination	FY
Dwg.Chk.	EH	Approved	AFK
Scale	Project		Status
1:3500@A3	248137	PRE	
Drawing No.	FIGURE 9.1.3		Rev
			P4

© COPYRIGHT RESERVED

© Mott MacDonald Hong Kong Limited
This document should not be relied on or used in circumstances other than those for which it was originally prepared and for which Mott MacDonald Hong Kong Limited was commissioned. Mott MacDonald Hong Kong Limited accepts no responsibility for this document to any other party other than the person by whom it was commissioned.



KEY PLAN

LEGEND:

- B1** BARING AREA
- W2** WORKS AREA
- PROPOSED WORKS SITE (GROUND LEVEL AND UNDERGROUND)
- PROPOSED WORKS SITE (UNDERGROUND)
- PROPOSED WORKS AREA (GROUND LEVEL)
- X** DUST MONITORING STATIONS

P4	AUG 10	MING	ISSUE TO MTRC & EPD	FY	AFK
P3	MAY 10	MING	ISSUE TO MTRC & EPD	FY	AFK
P2	DEC 09	MING	ISSUE TO MTRC & EPD	FY	AFK
P1	NOV 09	MING	ISSUE TO MTRC	BL	AFK
Rev	Date	Drawn	Description		Ch'kd/App'd



Project

**CONSULTANCY AGREEMENT NO. NEX/2301
SOUTH ISLAND LINE (EAST)
ENVIRONMENTAL IMPACT ASSESSMENT**

Title

**PROPOSED LOCATION OF CONSTRUCTION
AIR QUALITY MONITORING STATIONS**

Designed	EH	Eng.Chk.	FY	
Drawn	MING	Coordination	FY	
Dwg.Chk.	EH	Approved	AFK	
Scale	1:3500@A3	Project	248137	Status
		CAD File	I:\248137\sp0r11\env\encom\00804\FIGURE_S-1.4.dgn	PRE
Drawing No.				Rev
				P4