

KEY PLAN
SCALE 1:100000

- LEGEND:
- BOUNDARY OF HKSAR
 - 500m ASSESSMENT AREA
 - TENTATIVE WORKS AREA
 - X AIR SENSITIVE RECEIVERS

P3	AUG 10	MING	GENERAL REVISION	FN	HT
P2	MAY 10	MING	GENERAL REVISION	WKM	HT
P1	APR 10	MING	FIRST ISSUE	WKM	HT
Rev	Date	Drawn	Description	Ch'k'd	App'd



20/F Two Landmark East
100 How Ming Street
Kowloon Tong, Kowloon
Hong Kong
T +852 2828 5757
F +852 2827 1823
W www.mottmac.com.hk

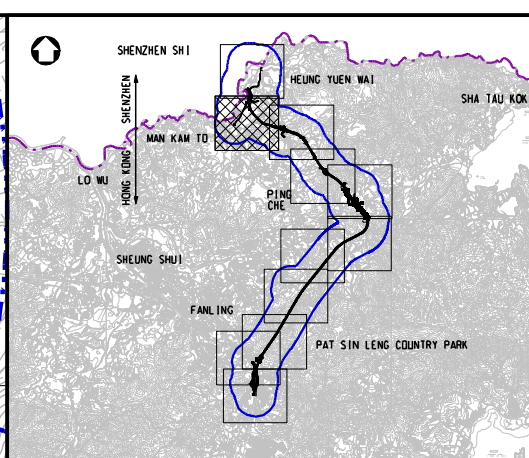
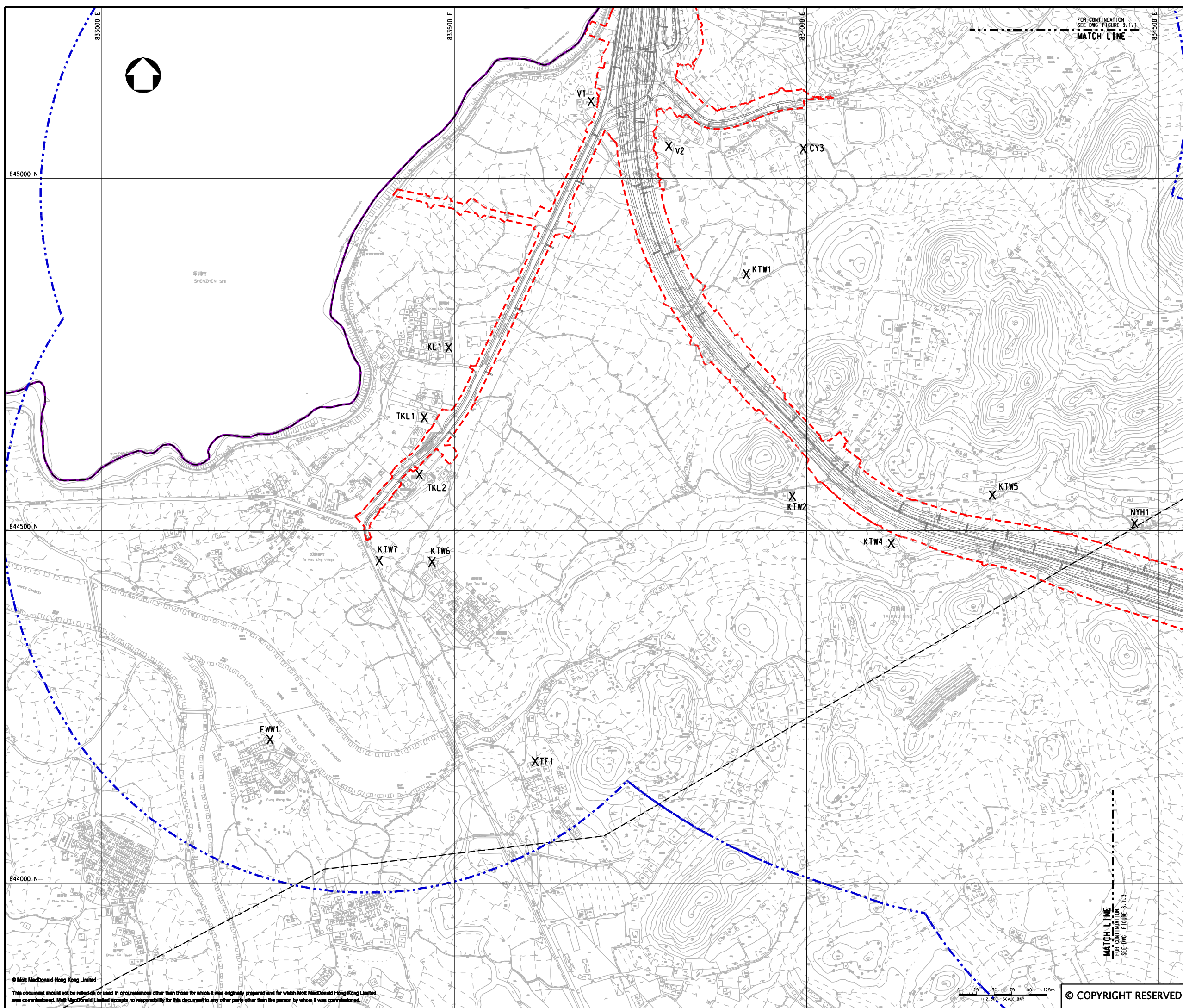
Client	CEDD CIVIL ENGINEERING AND DEVELOPMENT DEPARTMENT
--------	--

Project	AGREEMENT NO. CE45/2008(CE) LIANTANG/HEUNG YUEN WAI BOUNDARY CONTROL POINT AND ASSOCIATED WORKS
---------	---

Title	LOCATION OF AIR SENSITIVE RECEIVERS (ASRs) (SHEET 1 OF 11)
-------	--

Designed	HC	Eng. Chk.	EC	
Drawn	MING	Coordination	EC	
Dwg. Chk.	HC	Approved	HT	
Scale at A1	1:2500	Project	255228	Status
		CAD file	h:\255228\report\env\env\100816\FIG 3-1.1.dgn	PRE
Drawing No	FIGURE 3.1.1	Rev	P3	

© COPYRIGHT RESERVED



KEY PLAN
SCALE 1:100000

- LEGEND:
- BOUNDARY OF HKSAR
 - 500m ASSESSMENT AREA
 - TENTATIVE WORKS AREA
 - X AIR SENSITIVE RECEIVERS

P4	SEP 10	MING	GENERAL REVISION	FN	HT
P3	AUG 10	MING	GENERAL REVISION	FN	HT
P2	MAY 10	MING	GENERAL REVISION	WKM	HT
P1	APR 10	MING	FIRST ISSUE	WKM	HT
Rev	Date	Drawn	Description	Ch'k'd	App'd

Mott MacDonald

20/F Two Landmark East
100 How Ming Street
Kowloon Tong, Kowloon
Hong Kong
T +852 2828 5757
F +852 2827 1823
W www.mottmac.com.hk

Client

CEDD

CIVIL ENGINEERING
AND DEVELOPMENT
DEPARTMENT

Project

AGREEMENT NO. CE45/2008(CE)
LIANTANG/HEUNG YUEN WAI BOUNDARY
CONTROL POINT AND ASSOCIATED WORKS

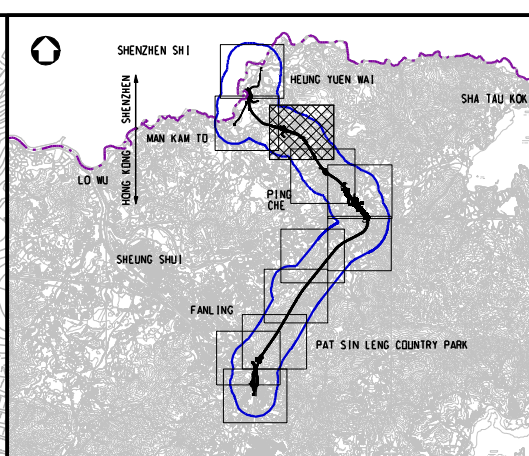
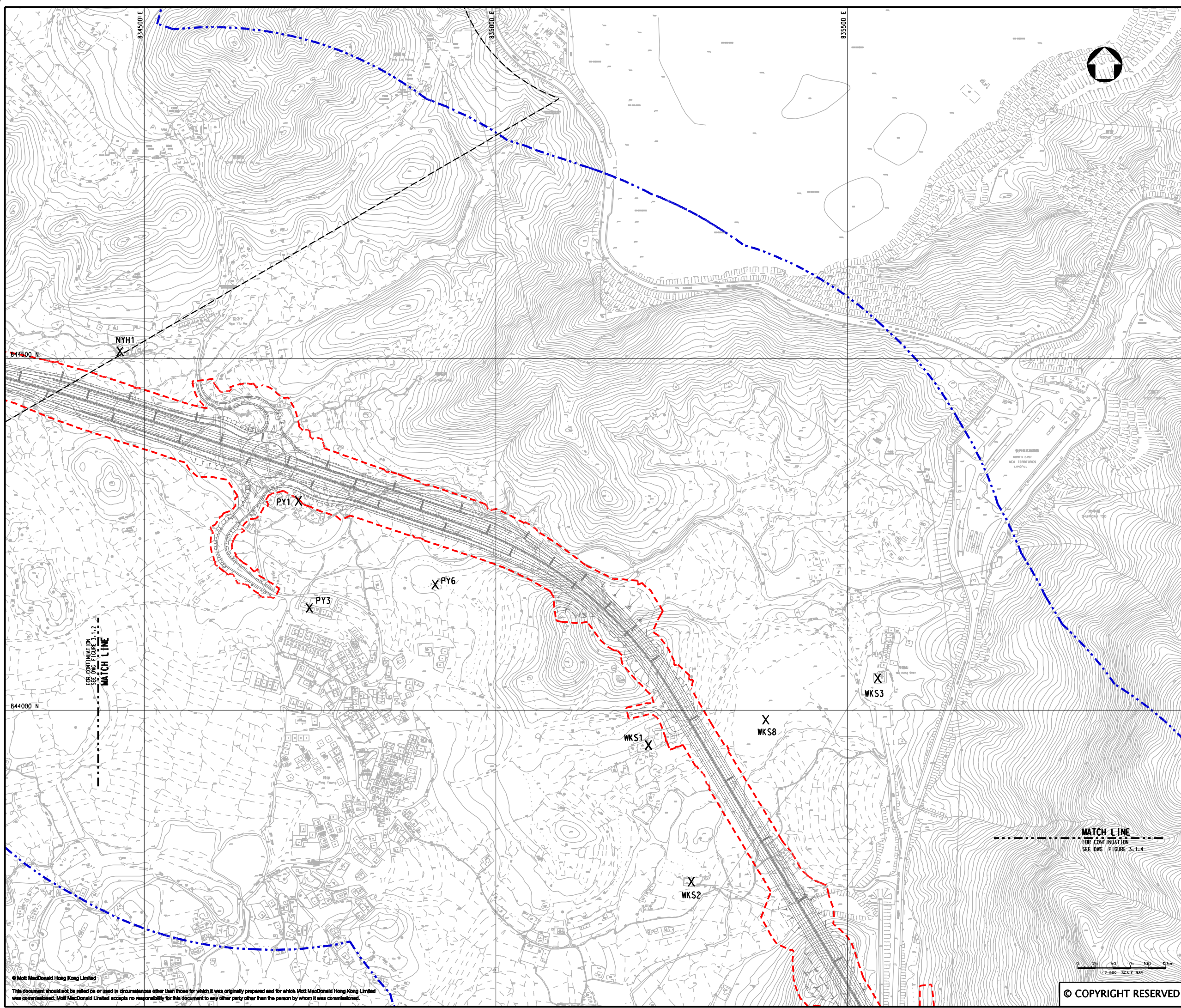
Title

LOCATION OF AIR SENSITIVE RECEIVERS
(ASRs)

(SHEET 2 OF 11)

Designed	HC	Eng. Chk.	EC	
Drawn	MING	Coordination	EC	
Dwg. Chk.	HC	Approved	HT	
Scale at A1	Project	255228	Status	
1:2500	CAD file	h:\255228\report\env\velo\00924\Fig 3-12.dgn	PRE	
Drawing No	FIGURE 3.1.2	Rev	P4	

© COPYRIGHT RESERVED



KEY PLAN
SCALE 1:100000

LEGEND:

- 500m ASSESSMENT AREA
- TENTATIVE WORKS AREA
- X AIR SENSITIVE RECEIVERS

P3	AUG 10	MING	GENERAL REVISION	FN	HT
P2	MAY 10	MING	GENERAL REVISION	WKM	HT
P1	APR 10	MING	FIRST ISSUE	WKM	HT
Rev	Date	Drawn	Description	Ch'k'd	App'd

Mott MacDonald

20/F Two Landmark East
100 How Ming Street
Kowloon Tong, Kowloon
Hong Kong
T +852 2828 5757
F +852 2827 1823
W www.mottmac.com.hk

Client

CEDD

**CIVIL ENGINEERING
AND DEVELOPMENT
DEPARTMENT**

Project

AGREEMENT NO. CE45/2008(CE)
LIANTANG/HEUNG YUEN WAI BOUNDARY
CONTROL POINT AND ASSOCIATED WORKS

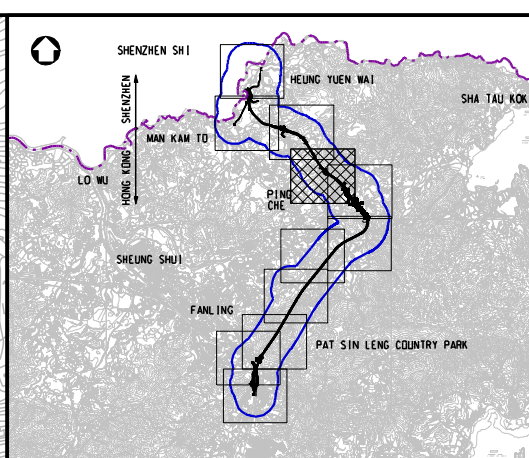
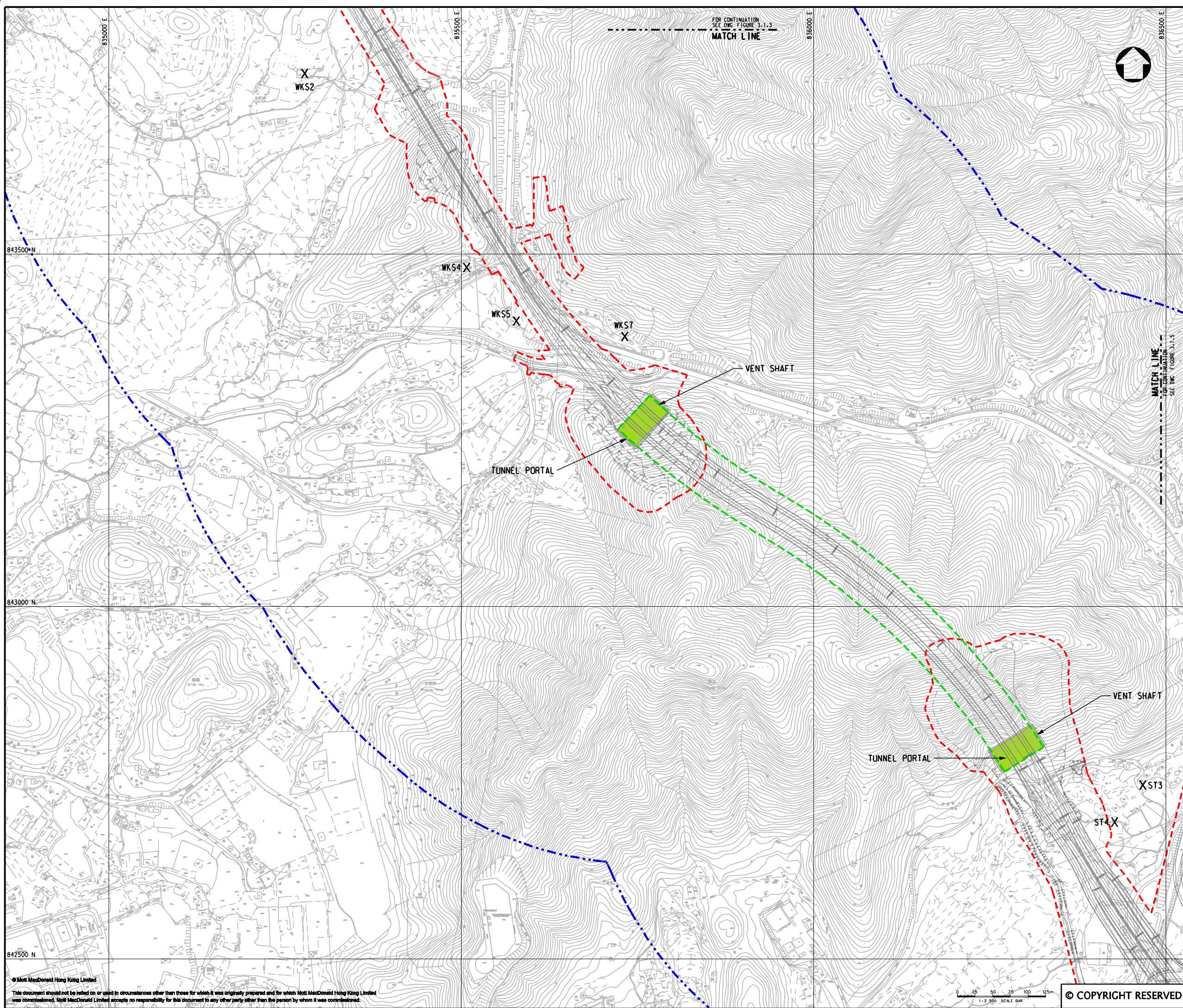
Title

LOCATION OF AIR SENSITIVE RECEIVERS
(ASRs)

(SHEET 3 OF 11)

Designed	HC	Eng. Chk.	EC
Drawn	MING	Coordination	EC
Dwg. Chk.	HC	Approved	HT
Scale at A1	Project	255228	Status
1:2500	CAD file	h:\255228\report\env\velo\00924\Fig 3-1.3.dgn	PRE
Drawing No	FIGURE 3.1.3	Rev	P4

© COPYRIGHT RESERVED



KEY PLAN
SCALE 1:100000

LEGEND:

- 500m ASSESSMENT AREA
- TENTATIVE WORKS AREA
- TUNNEL SECTION
- PROPOSED TUNNEL VENTILATION BUILDING
- X AIR SENSITIVE RECEIVERS

P4	SEP 10	MING	GENERAL REVISION	FN	HT
P3	AUG 10	MING	GENERAL REVISION	FN	HT
P2	MAY 10	MING	GENERAL REVISION	WKM	HT
P1	APR 10	MING	FIRST ISSUE	WKM	HT
Rev	Date	Drawn	Description	Ch'k'd	App'd

Mott MacDonald

20/F Two Landmark East
100 How Ming Street
Kowloon, Hong Kong
T +852 2828 5757
F +852 2827 1823
W www.mottmac.com.hk

CEDD

**CIVIL ENGINEERING
AND DEVELOPMENT
DEPARTMENT**

Project

AGREEMENT NO. CE45/2008(CE)
LIANTANG/HEUNG YUEN WAI BOUNDARY
CONTROL POINT AND ASSOCIATED WORKS

Title

LOCATION OF AIR SENSITIVE RECEIVERS
(ASRs)

(SHEET 4 OF 11)

Designed	HC	Eng. Chk.	EC
Drawn	MING	Coordination	EC
Dwg. Chk.	HC	Approved	HT
Scale at A1	Project	Status	
1:2500	255228	PRE	
Drawing No	FIGURE 3.1.4	Rev	P4