

KEY PLAN
SCALE 1:100000

LEGEND:

- 500m ASSESSMENT AREA
- TENTATIVE WORKS AREA
- TUNNEL SECTION
- PROPOSED TUNNEL VENTILATION BUILDING
- X AIR SENSITIVE RECEIVERS

P4	SEP 10	MING	GENERAL REVISION	FN	HT
P3	AUG 10	MING	GENERAL REVISION	FN	HT
P2	MAY 10	MING	GENERAL REVISION	WKM	HT
P1	APR 10	MING	FIRST ISSUE	WKM	HT
Rev	Date	Drawn	Description	Ch'k'd	App'd

Mott MacDonald

20/F Two Landmark East
100 How Ming Street
Kowloon, Kowloon
Hong Kong
T +852 2828 5757
F +852 2827 1823
W www.mottmac.com.hk

CEDD

**CIVIL ENGINEERING
AND DEVELOPMENT
DEPARTMENT**

Project

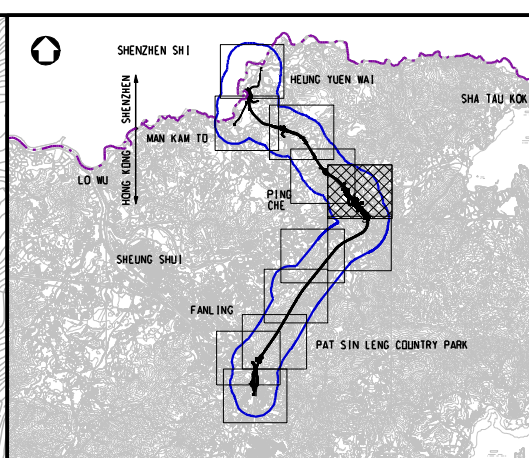
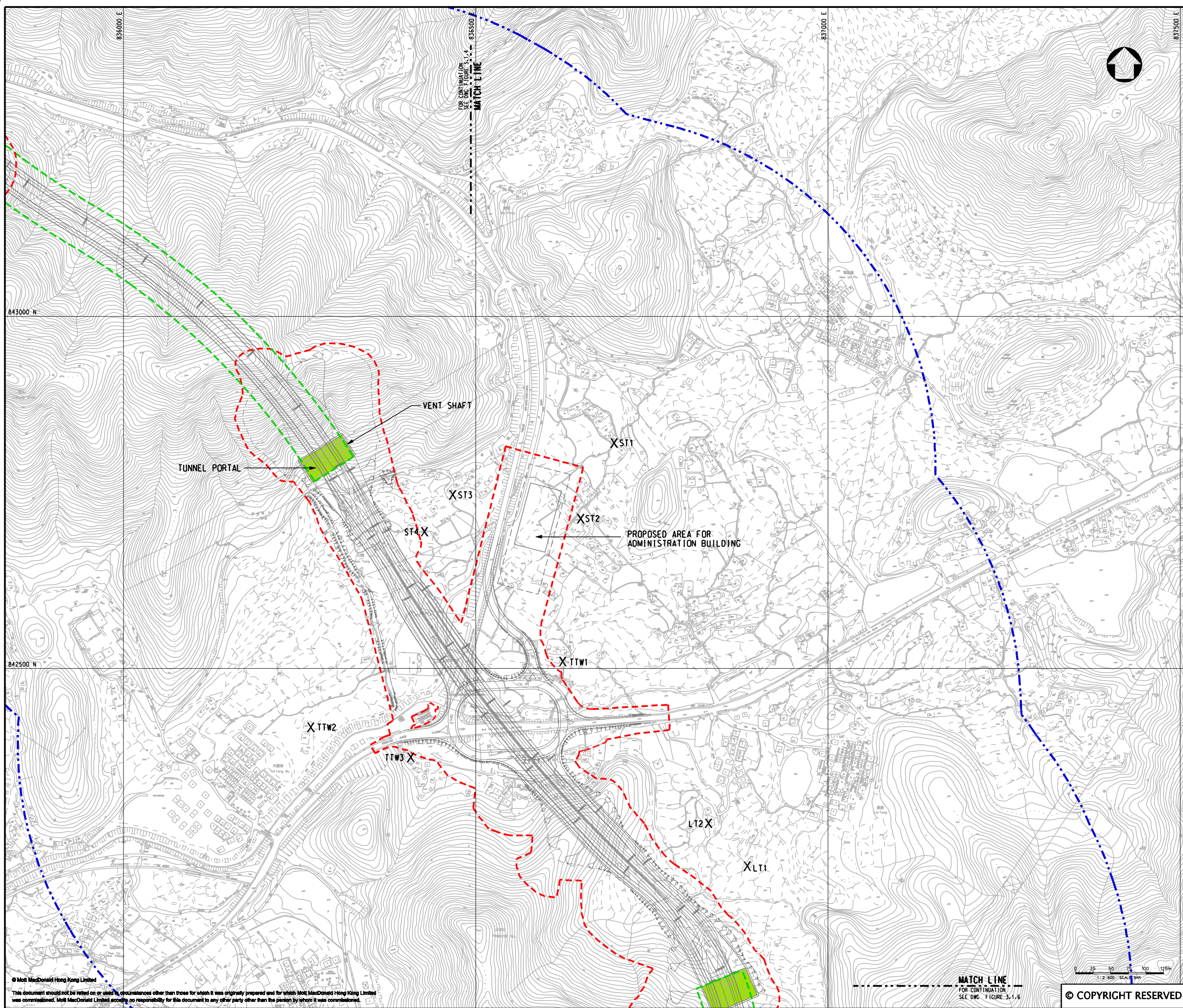
AGREEMENT NO. CE45/2008(CE)
LIANTANG/HEUNG YUEN WAI BOUNDARY
CONTROL POINT AND ASSOCIATED WORKS

Title

LOCATION OF AIR SENSITIVE RECEIVERS
(ASRs)

(SHEET 4 OF 11)

Designed	HC	Eng. Chk.	EC
Drawn	MING	Coordination	EC
Dwg. Chk.	HC	Approved	HT
Scale at A1	Project	Status	
1:2500	255228	PRE	
Drawing No	FIGURE 3.1.4	Rev	P4



KEY PLAN
SCALE 1:100000

LEGEND:

- 500m ASSESSMENT AREA
- TENTATIVE WORKS AREA
- TUNNEL SECTION
- PROPOSED TUNNEL VENTILATION BUILDING
- AIR SENSITIVE RECEIVERS

P4	SEP 10	MING	GENERAL REVISION	FN	HT
P3	AUG 10	MING	GENERAL REVISION	FN	HT
P2	MAY 10	MING	GENERAL REVISION	WKM	HT
P1	APR 10	MING	FIRST ISSUE	WKM	HT
Rev	Date	Drawn	Description	Ch'k'd	App'd

Mott MacDonald

20/F Two Landmark East
100 How Ming Street
Kowloon, Hong Kong
T +852 2828 5757
F +852 2827 1823
W www.mottmac.com.hk

CEDD

**CIVIL ENGINEERING
AND DEVELOPMENT
DEPARTMENT**

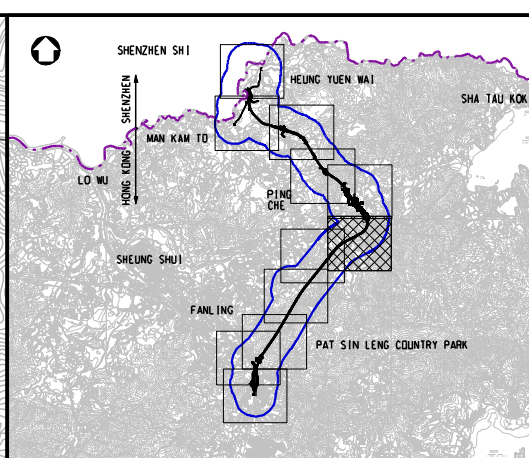
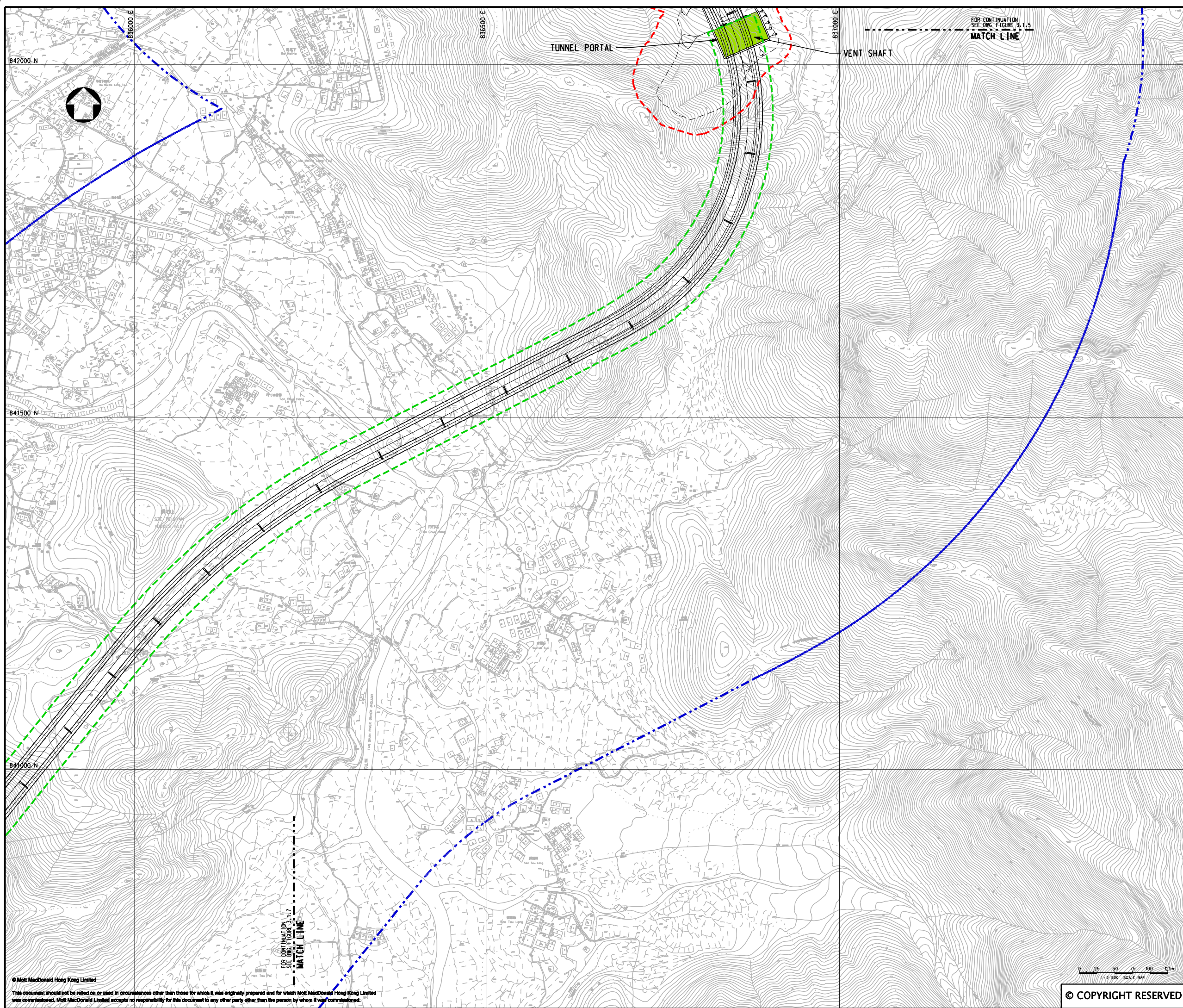
Project

AGREEMENT NO. CE45/2008(CE)
LIANTANG/HEUNG YUEN WAI BOUNDARY
CONTROL POINT AND ASSOCIATED WORKS

Title

LOCATION OF AIR SENSITIVE RECEIVERS
(ASRs)
(SHEET 5 OF 11)

Designed	HC	Eng. Chk.	EC
Drawn	MING	Coordination	EC
Dwg. Chk.	HC	Approved	HT
Scale at A1	Project	255228	Status
1:2500	CAD file	h:\255228\report\env\velo\00924\Fig 3-15.dgn	PRE
Drawing No	FIGURE 3.1.5	Rev	P4



KEY PLAN
SCALE 1:100000

LEGEND:

- 500m ASSESSMENT AREA
- TENTATIVE WORKS AREA
- TUNNEL SECTION
- PROPOSED TUNNEL VENTILATION BUILDING

P3	AUG 10	MING	GENERAL REVISION	FN	HT
P2	MAY 10	MING	GENERAL REVISION	WKM	HT
P1	APR 10	MING	FIRST ISSUE	WKM	HT
Rev	Date	Drawn	Description	Ch'k'd	App'd

Mott MacDonald

20/F Two Landmark East
100 How Ming Street
Kowloon
Hong Kong
T +852 2828 5757
F +852 2827 1823
W www.mottmac.com.hk

CEDD

**CIVIL ENGINEERING
AND DEVELOPMENT
DEPARTMENT**

Project

AGREEMENT NO. CE45/2008(CE)
LIANTANG/HEUNG YUEN WAI BOUNDARY
CONTROL POINT AND ASSOCIATED WORKS

Title

LOCATION OF AIR SENSITIVE RECEIVERS
(ASRs)

(SHEET 6 OF 11)

Designed	HC	Eng.Chk.	EC
Drawn	MING	Coordination	EC
Dwg.Chk.	HC	Approved	HT
Scale at A1	Project	255228	Status
1:2500	CAD file	h:\255228\report\env\elo\008\6\FIC_3-1-6.dgn	PRE
Drawing No	Figure	3.1.6	Rev
			P3

© COPYRIGHT RESERVED