

KEY PLAN  
SCALE 1:100000

LEGEND:

BOUNDARY OF HKSAR

500m ASSESSMENT AREA

TENTATIVE WORKS AREA

X  
AIR SENSITIVE RECEIVERS COMPLIED WITH AOD CRITERIA.

AOD CRITERIA

P2	NOV 10	MMH	GENERAL REVISION	DC	HT
P1	OCT 10	MMH	FIRST ISSUE	DC	HT
Rev	Date	Drawn	Description	Ch'k'd	App'd

20/F Two Landmark East  
100 How Ming Street  
Kowloon Tong, Kowloon  
Hong Kong  
T +852 2828 5757  
F +852 2827 1823  
W www.mottmac.com.hk

Client

CIVIL ENGINEERING  
AND DEVELOPMENT  
DEPARTMENT

Project

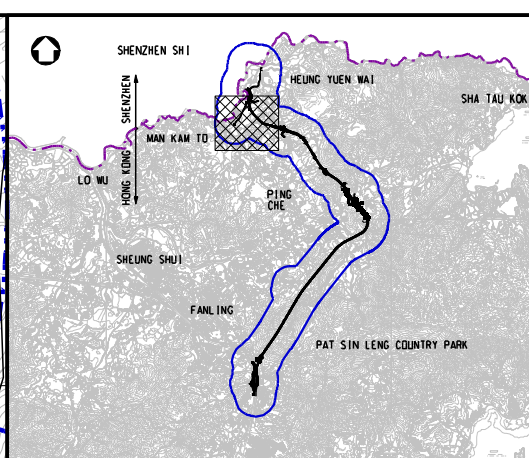
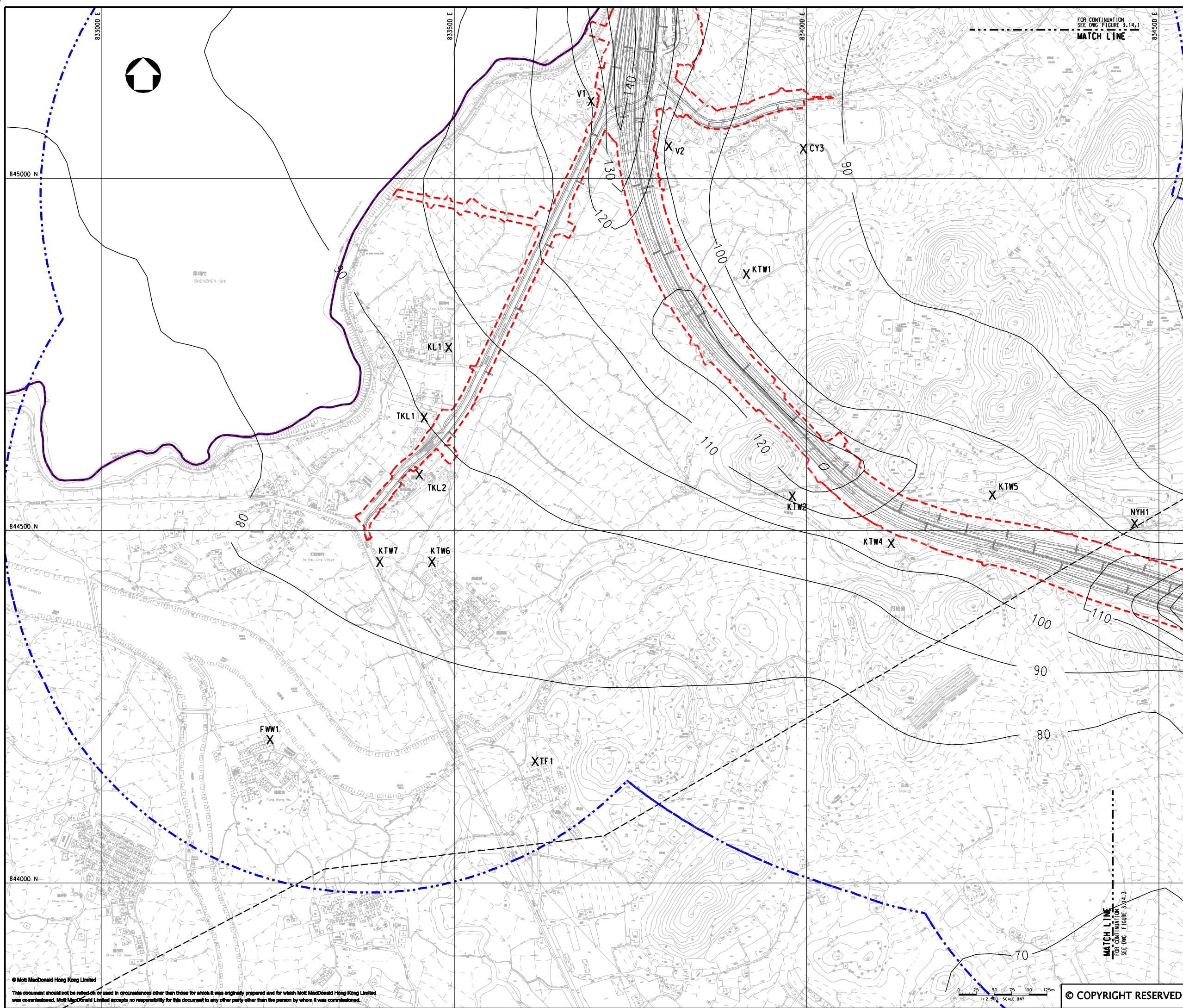
AGREEMENT NO. CE45/2008(CE)  
LIANTANG/HEUNG YUEN WAI BOUNDARY  
CONTROL POINT AND ASSOCIATED WORKS

Title

CUMULATIVE RESULT - CONTOUR OF DAILY NO<sub>2</sub>  
CONCENTRATION ( $\mu\text{g}/\text{m}^3$ ) AT 1.5m ABOVE GROUND  
DURING OPERATIONAL PHASE FOR NORTHERN  
SECTION (STABILITY CLASS F)  
(SHEET 1 OF 4)

Designed	HC	Eng.Chk.	EC
Drawn	MING	Coordination	EC
Dwg.Chk.	HC	Approved	HT
Scale at A1	Project	255228	Status
1:2500	CAD file	h:\255228\report\env\env\1015\FIG 3-14J.dgn	PRE
Drawing No	FIGURE 3.14.1	Rev	P2





**KEY PLAN**  
SCALE 1:100000

**LEGEND:**

- BOUNDARY OF HK SAR
- 500m ASSESSMENT AREA
- TENTATIVE WORKS AREA
- AIR SENSITIVE RECEIVERS COMPLIED WITH ADO CRITERIA.

P2	NOV 10	MMH	GENERAL REVISION	DC	HT
P1	OCT 10	MMH	FIRST ISSUE	DC	HT
Rev	Date	Drawn	Description	Ch'k'd	App'd

**Mott MacDonald**

20/F Two Landmark East  
100 How Ming Street  
Kowloon  
Hong Kong  
T +852 2828 5757  
F +852 2827 1829  
W www.mottmac.com.hk

Client

**CEDD**

**CIVIL ENGINEERING  
AND DEVELOPMENT  
DEPARTMENT**

Project

AGREEMENT NO. CE45/2008(CE)  
LIANTANG/HEUNG YUEN WAI BOUNDARY  
CONTROL POINT AND ASSOCIATED WORKS

Title

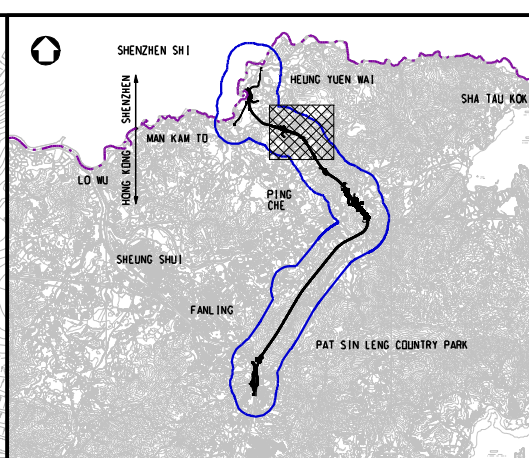
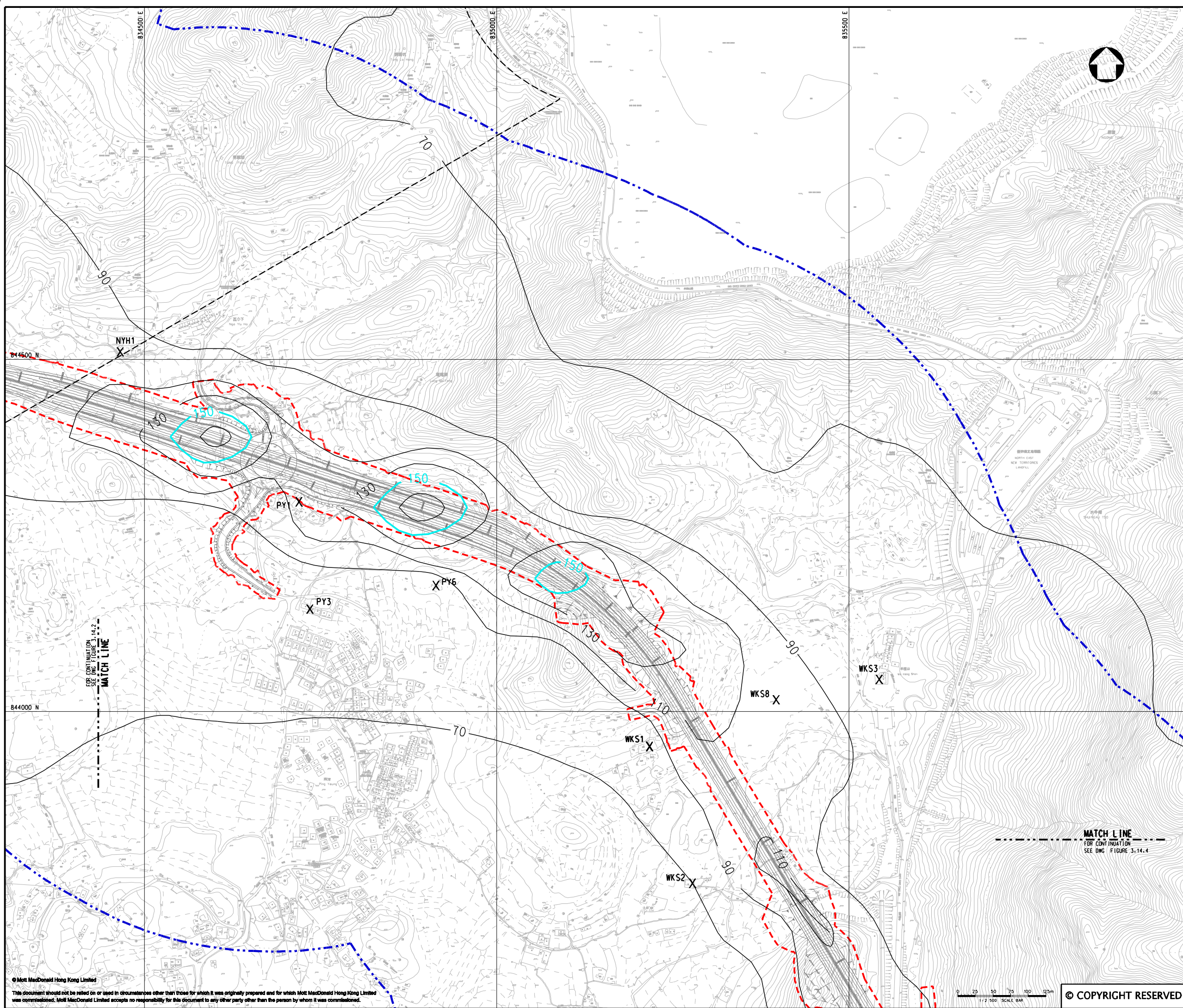
CUMULATIVE RESULT - CONTOUR OF DAILY NO<sub>2</sub>  
CONCENTRATION ( $\mu\text{g}/\text{m}^3$ ) AT 1.5m ABOVE GROUND  
DURING OPERATIONAL PHASE FOR NORTHERN  
SECTION (STABILITY CLASS F)

(SHEET 2 OF 4)

Designed	HC	Eng.Chk.	EC
Drawn	MING	Coordination	EC
Dwg.Chk.	HC	Approved	HT
Scale at A1	Project	255228	Status
1:2500	CAD file	h:\255228\report\env\velo\0185\FIG 3-14.2.dgn	PRE
Drawing No	Figure	FIGURE 3.14.2	Rev
			P2

© COPYRIGHT RESERVED





KEY PLAN  
SCALE 1:100000

LEGEND:

- 500m ASSESSMENT AREA
- TENTATIVE WORKS AREA
- AIR SENSITIVE RECEIVERS COMPLIED WITH AAO CRITERIA.
- AAO CRITERIA

P2	NOV 10	MMH	GENERAL REVISION	DC	HT
P1	OCT 10	MMH	FIRST ISSUE	DC	HT
Rev	Date	Drawn	Description	Ch'k'd	App'd



20/F Two Landmark East  
100 How Ming Street  
Kowloon, Kowloon  
Hong Kong  
T +852 2828 5757  
F +852 2827 1823  
W www.mottmac.com.hk

Client



CIVIL ENGINEERING  
AND DEVELOPMENT  
DEPARTMENT

Project

AGREEMENT NO. CE45/2008(CE)  
LIANTANG/HEUNG YUEN WAI BOUNDARY  
CONTROL POINT AND ASSOCIATED WORKS

Title

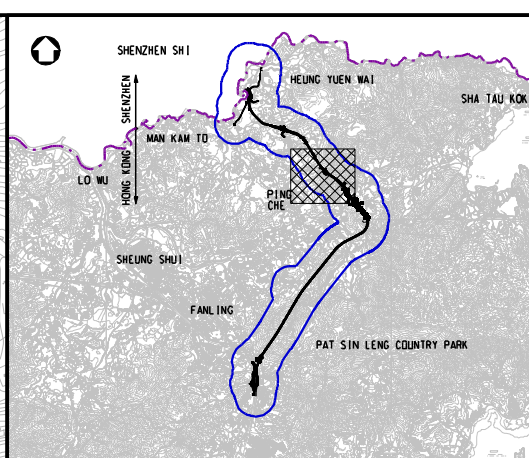
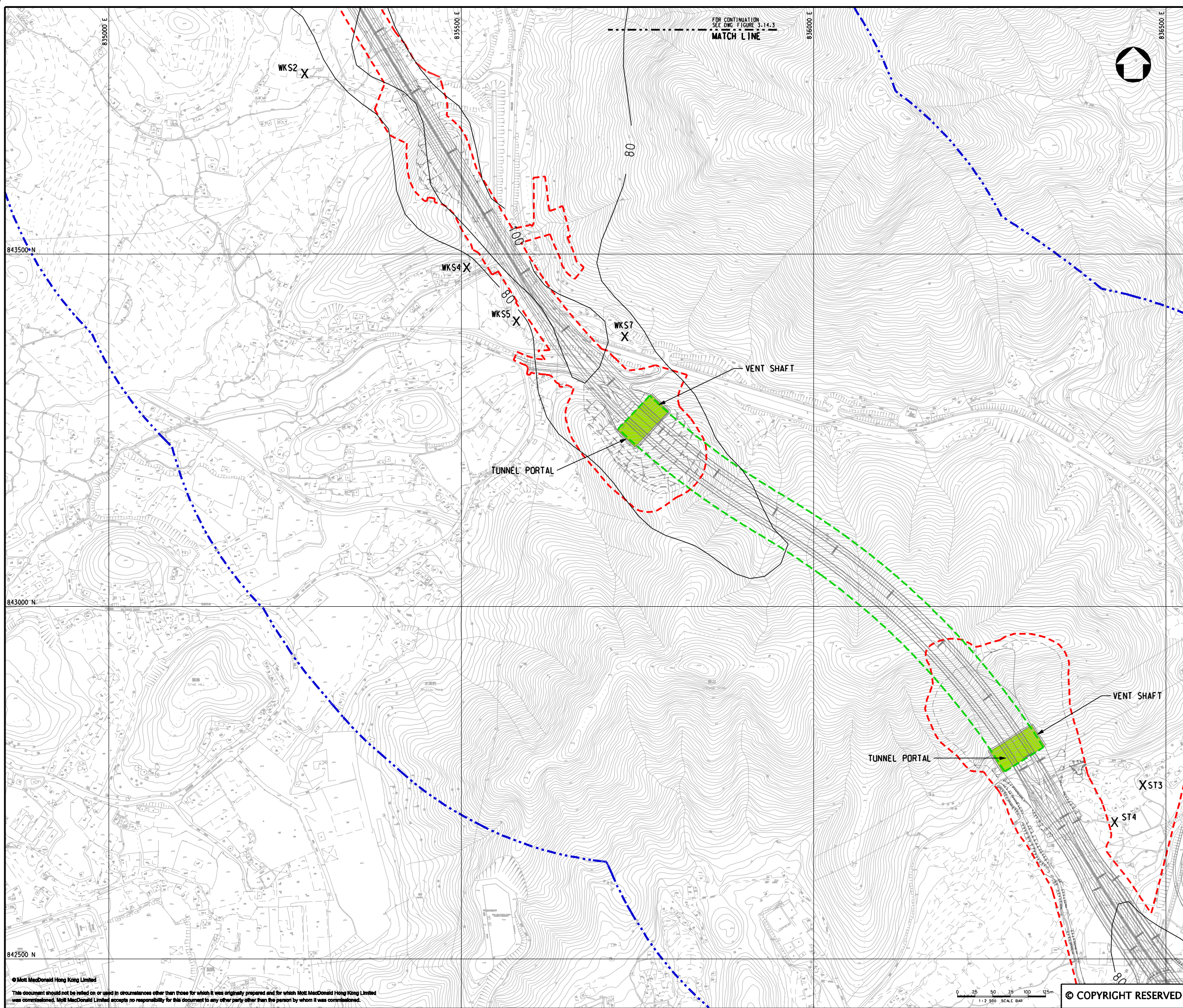
CUMULATIVE RESULT - CONTOUR OF DAILY NO<sub>2</sub>  
CONCENTRATION ( $\mu\text{g}/\text{m}^3$ ) AT 1.5m ABOVE GROUND  
DURING OPERATIONAL PHASE FOR NORTHERN  
SECTION (STABILITY CLASS F)

(SHEET 3 OF 4)

Designed	HC	Eng.Chk.	EC	
Drawn	MING	Coordination	EC	
Dwg.Chk.	HC	Approved	HT	
Scale at A1	Project	255228	Status	
1:2500	CAD file	Report	FIG 3-14.3.dgn	PRE
Drawing No	FIGURE 3.14.3	Rev	P2	

© COPYRIGHT RESERVED





**KEY PLAN**  
SCALE 1:100000

**LEGEND:**

- 500m ASSESSMENT AREA
- TENTATIVE WORKS AREA
- TUNNEL SECTION
- PROPOSED TUNNEL VENTILATION BUILDING
- AIR SENSITIVE RECEIVERS COMPLIED WITH ADO CRITERIA.

P2	NOV 10	MMH	GENERAL REVISION	DC	HT
P1	OCT 10	MMH	FIRST ISSUE	DC	HT
Rev	Date	Drawn	Description	Ch'k'd	App'd

**Mott MacDonald**

20/F Two Landmark East  
100 How Ming Street  
Kowloon Tong, Kowloon  
Hong Kong  
T +852 2828 5757  
F +852 2827 1823  
W www.mottmac.com.hk

Client

**CEDD**

**CIVIL ENGINEERING  
AND DEVELOPMENT  
DEPARTMENT**

Project

AGREEMENT NO. CE45/2008(CE)  
LIANTANG/HEUNG YUEN WAI BOUNDARY  
CONTROL POINT AND ASSOCIATED WORKS

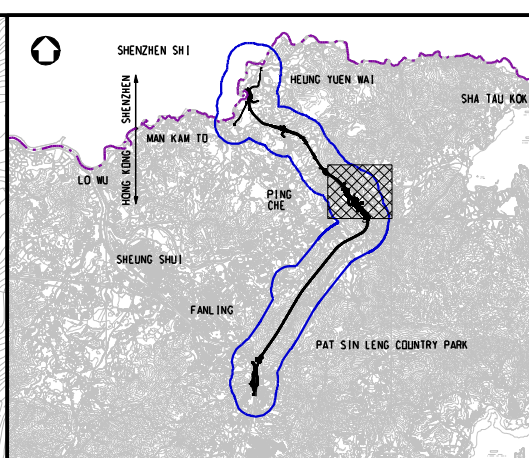
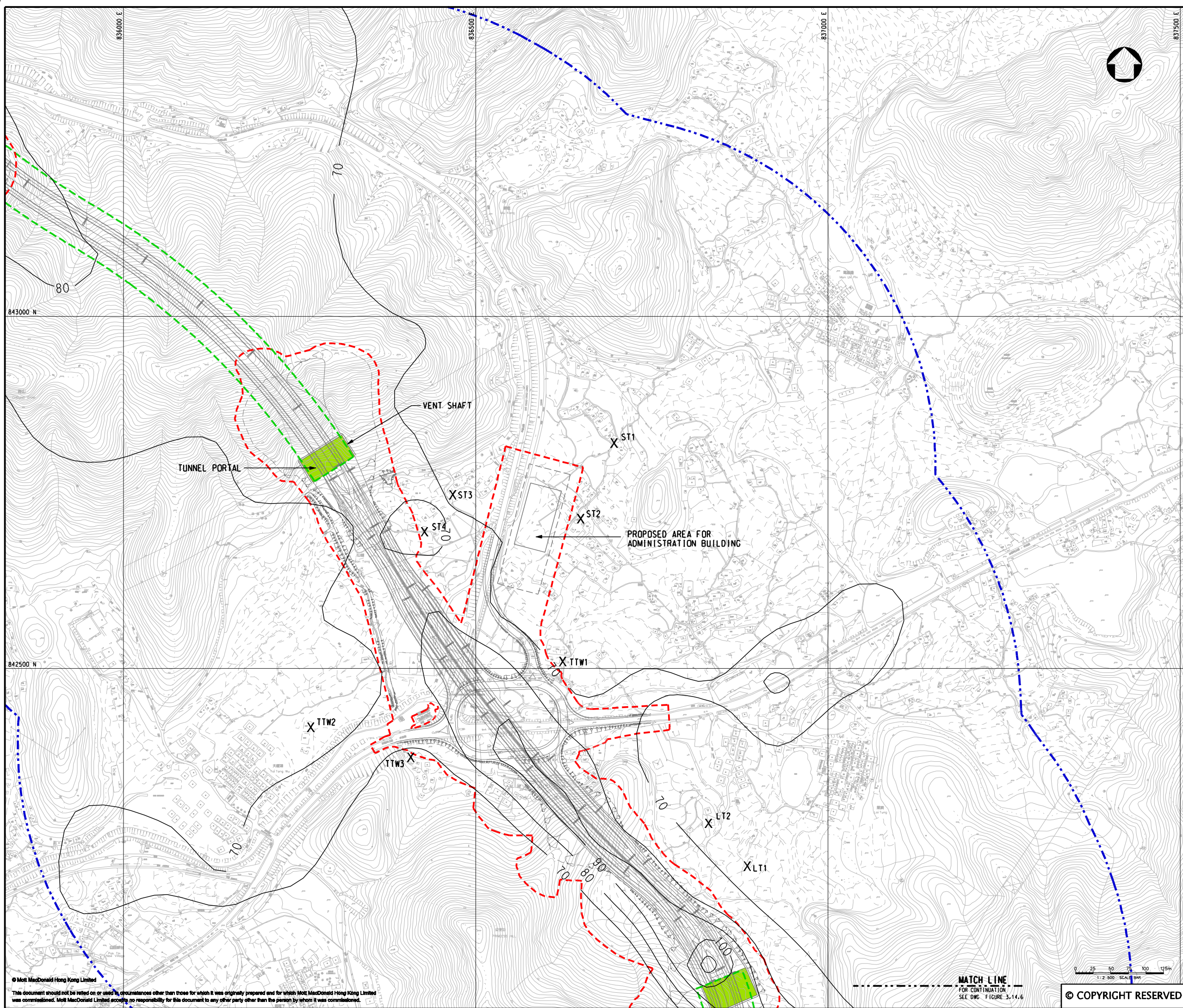
Title

CUMULATIVE RESULT - CONTOUR OF DAILY NO<sub>2</sub>  
CONCENTRATION ( $\mu\text{g}/\text{m}^3$ ) AT 1.5m ABOVE GROUND  
DURING OPERATIONAL PHASE FOR NORTHERN  
SECTION (STABILITY CLASS F)

(SHEET 4 OF 4)

Designed	HC	Eng.Chk.	EC	
Drawn	MING	Coordination	EC	
Dwg.Chk.	HC	Approved	HT	
Scale at A1	Project	255228	Status	
1:2500	CAD file	Report\env\velo\0185\FIG 3-14.4.dgn	PRE	
Drawing No	FIGURE 3.14.4	Rev	P2	





KEY PLAN  
SCALE 1:100000

LEGEND:

- 500m ASSESSMENT AREA
- TENTATIVE WORKS AREA
- TUNNEL SECTION
- PROPOSED TUNNEL VENTILATION BUILDING
- AIR SENSITIVE RECEIVERS COMPLIED WITH AOD CRITERIA.

P2	NOV 10	MMH	GENERAL REVISION	DC	HT
P1	OCT 10	MMH	FIRST ISSUE	DC	HT
Rev	Date	Drawn	Description	Ch'k'd	App'd



20/F Two Landmark East  
100 How Ming Street  
Kowloon, Kowloon  
Hong Kong  
T +852 2828 5757  
F +852 2827 1823  
W www.mottmac.com.hk

Client



CIVIL ENGINEERING  
AND DEVELOPMENT  
DEPARTMENT

Project

AGREEMENT NO. CE45/2008(CE)  
LIANTANG/HEUNG YUEN WAI BOUNDARY  
CONTROL POINT AND ASSOCIATED WORKS

Title

CUMULATIVE RESULT - CONTOUR OF DAILY NO<sub>2</sub>  
CONCENTRATION ( $\mu\text{g}/\text{m}^3$ ) AT 1.5m ABOVE GROUND  
DURING OPERATIONAL PHASE FOR LOI TUNG  
(STABILITY CLASS F)

(SHEET 1 OF 2)

Designed	HC	Eng.Chk.	EC
Drawn	MING	Coordination	EC
Dwg.Chk.	HC	Approved	HT
Scale at A1	Project	255228	Status
1:2500	CAD file	report\envvelo\DIRS\FIG 3-14.5.dgn	PRE
Drawing No	FIGURE 3.14.5	Rev	P2

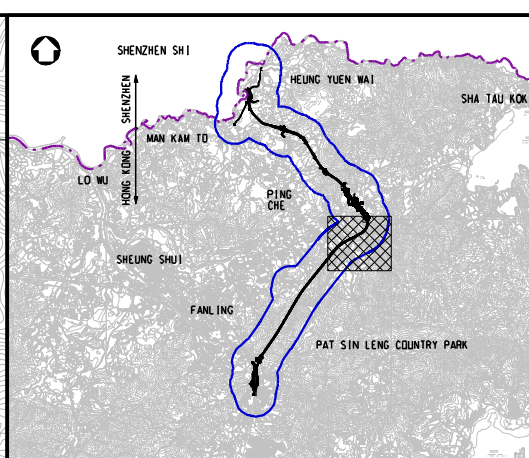
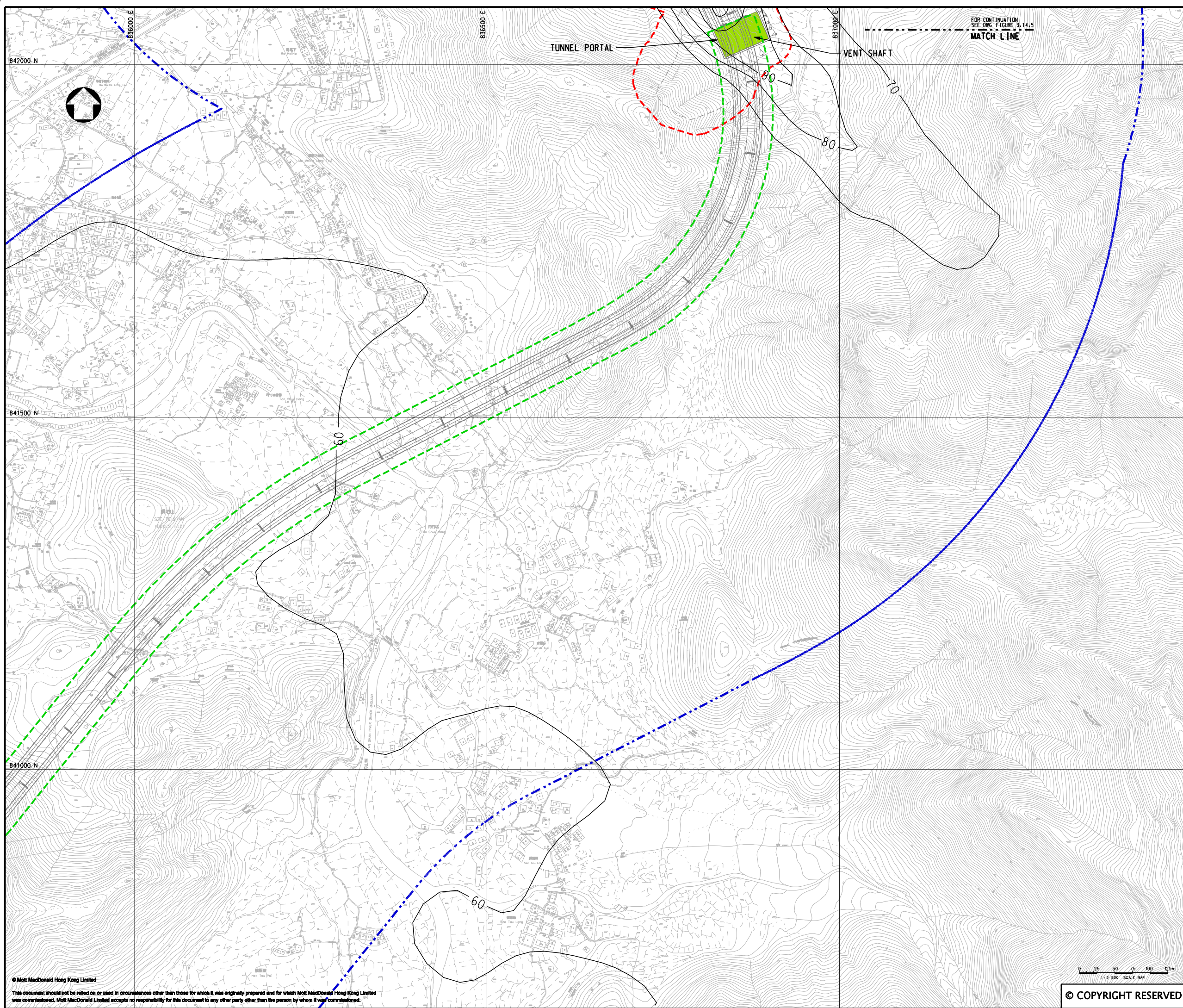
© COPYRIGHT RESERVED

MATCH LINE  
FOR CONTINUATION  
SEE DWG. FIGURE 3.14.6

0 25 50 100 125m  
1:2,500 SCALE

© Mott MacDonald Hong Kong Limited  
This document should not be relied on or used in circumstances other than those for which it was originally prepared and for which Mott MacDonald Hong Kong Limited was commissioned. Mott MacDonald Limited accepts no responsibility for this document to any other party other than the person by whom it was commissioned.





**KEY PLAN**  
SCALE 1:100000

**LEGEND:**

- 500m ASSESSMENT AREA
- - - TENTATIVE WORKS AREA
- - - TUNNEL SECTION
- PROPOSED TUNNEL VENTILATION BUILDING

P2	NOV 10	MMH	GENERAL REVISION	DC	HT
P1	AUG 10	MMH	FIRST ISSUE	HC	HT
Rev	Date	Drawn	Description	Ch'k'd	App'd

**Mott MacDonald**

20/F Two Landmark East  
100 How Ming Street  
Kowloon  
Hong Kong  
T +852 2828 5757  
F +852 2827 1823  
W www.mottmac.com.hk

Client

**CEDD**

**CIVIL ENGINEERING  
AND DEVELOPMENT  
DEPARTMENT**

Project

AGREEMENT NO. CE45/2008(CE)  
LIANTANG/HEUNG YUEN WAI BOUNDARY  
CONTROL POINT AND ASSOCIATED WORKS

Title

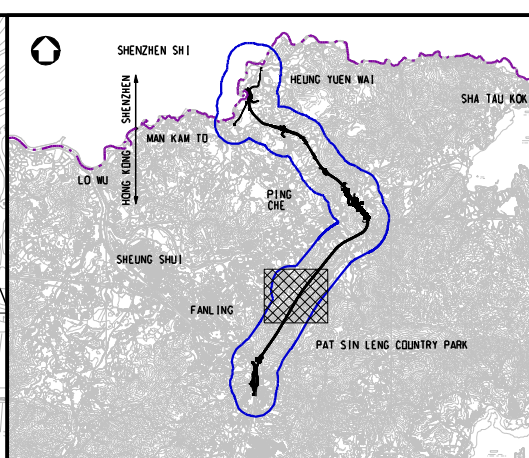
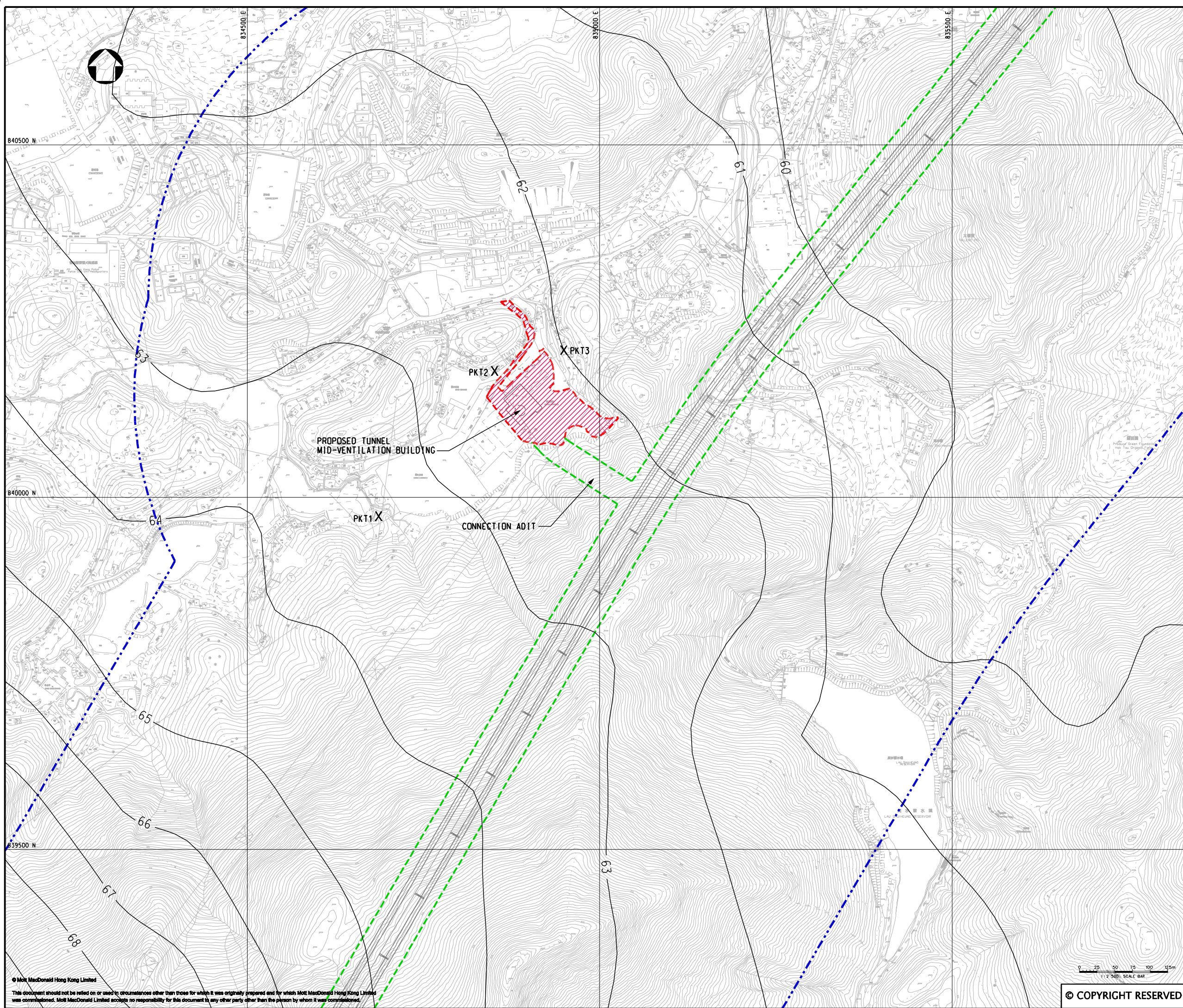
CUMULATIVE RESULT - CONTOUR OF DAILY NO<sub>2</sub>  
CONCENTRATION ( $\mu\text{g}/\text{m}^3$ ) AT 1.5m ABOVE GROUND  
DURING OPERATIONAL PHASE FOR LOI TUNG  
(STABILITY CLASS F)

(SHEET 2 OF 2)

Designed	HC		Eng.Chk.	EC	
Drawn	MING		Coordination	EC	
Dwg.Chk.	HC		Approved	HT	
Scale at A1	Project	255228	Status		
1:2500	CAD file	h:\255228\report\env\env\01015\FIG 3-14.6.dgn	PRE		
Drawing No			Rev		
			P2		

© COPYRIGHT RESERVED





KEY PLAN  
SCALE 1:100000

LEGEND:

- 500m ASSESSMENT AREA
- TENTATIVE WORKS AREA
- TUNNEL SECTION
- PROPOSED AREA FOR MID-VENTILATION BUILDING
- AIR SENSITIVE RECEIVERS COMPLIED WITH AAO CRITERIA.

P2	NOV 10	MMH	GENERAL REVISION	DC	HT
P1	OCT 10	MMH	FIRST ISSUE	DC	HT
Rev	Date	Drawn	Description	Ch'k'd	App'd



20/F Two Landmark East  
100 How Ming Street  
Kowloon  
Hong Kong  
T +852 2828 5757  
F +852 2827 1823  
W www.motmac.com.hk

Client	CIVIL ENGINEERING AND DEVELOPMENT DEPARTMENT
--------	--

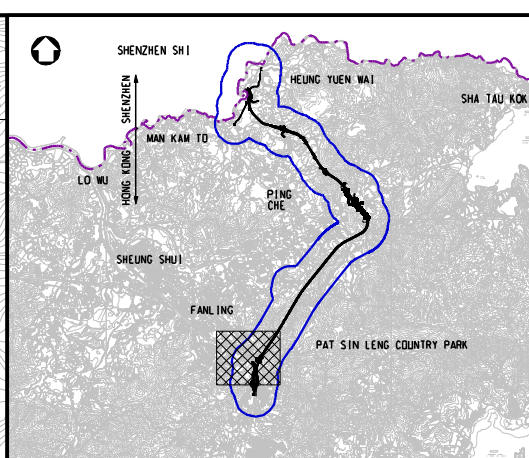
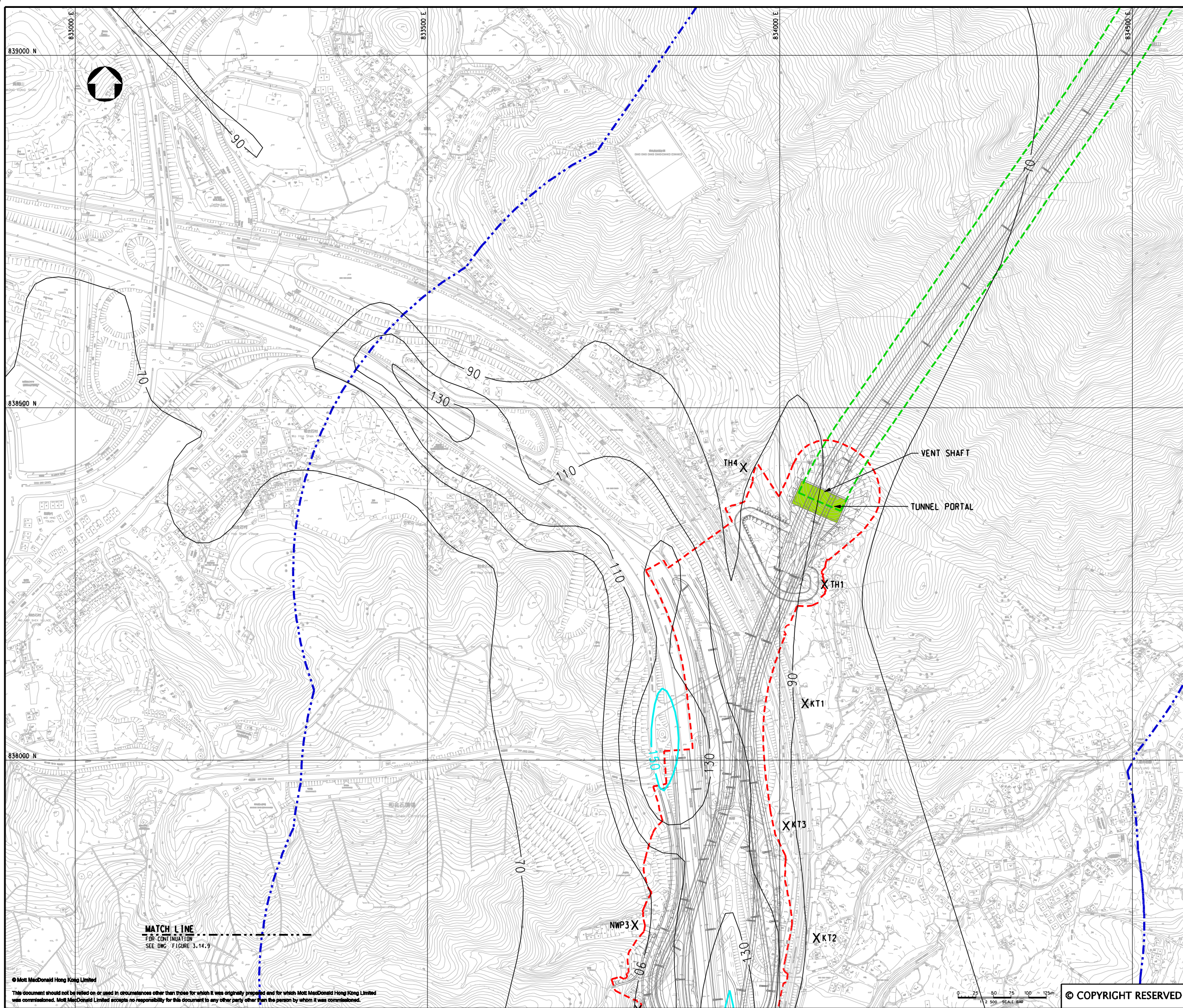
Project	AGREEMENT NO. CE45/2008(CE) LIANTANG/HEUNG YUEN WAI BOUNDARY CONTROL POINT AND ASSOCIATED WORKS
---------	---

Title	CUMULATIVE RESULT - CONTOUR OF DAILY NO <sub>2</sub> CONCENTRATION ( $\mu\text{g}/\text{m}^3$ ) AT 1.5m ABOVE GROUND DURING OPERATIONAL PHASE FOR PO KAK TSAI (STABILITY CLASS F)
-------	--

Designed	HC	Eng.Chk.	EC
Drawn	MING	Coordination	EC
Dwg.Chk.	HC	Approved	HT
Scale at A1	Project	255228	Status
1:2500	CAD file	Report\env\velo\0185\FIG 3-14.7.dgn	PRE
Drawing No	FIGURE 3.14.7	Rev	P2

© COPYRIGHT RESERVED





KEY PLAN  
SCALE 1:100000

LEGEND:

500m ASSESSMENT AREA

TENTATIVE WORKS AREA

X

P2	NOV 10	MMH	GENERAL REVISION	DC	HT
P1	OCT 10	MMH	FIRST ISSUE	DC	HT
Rev	Date	Drawn	Description	Ch'k'd	App'd



20/F Two Landmark East  
100 How Ming Street  
Kowloon  
Hong Kong  
T +852 2828 5757  
F +852 2827 1823  
W www.mottmac.com.hk

Client



CIVIL ENGINEERING  
AND DEVELOPMENT  
DEPARTMENT

Project

AGREEMENT NO. CE45/2008(CE)  
LIANTANG/HEUNG YUEN WAI BOUNDARY  
CONTROL POINT AND ASSOCIATED WORKS

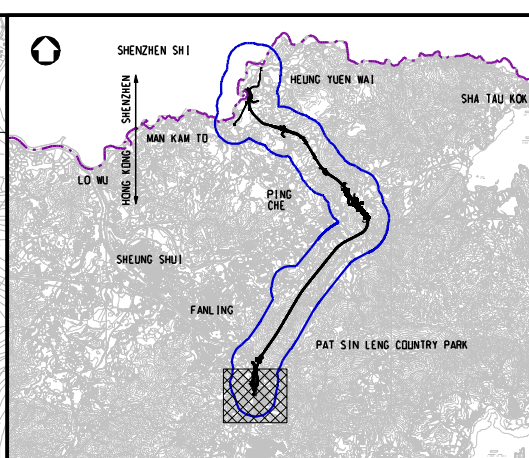
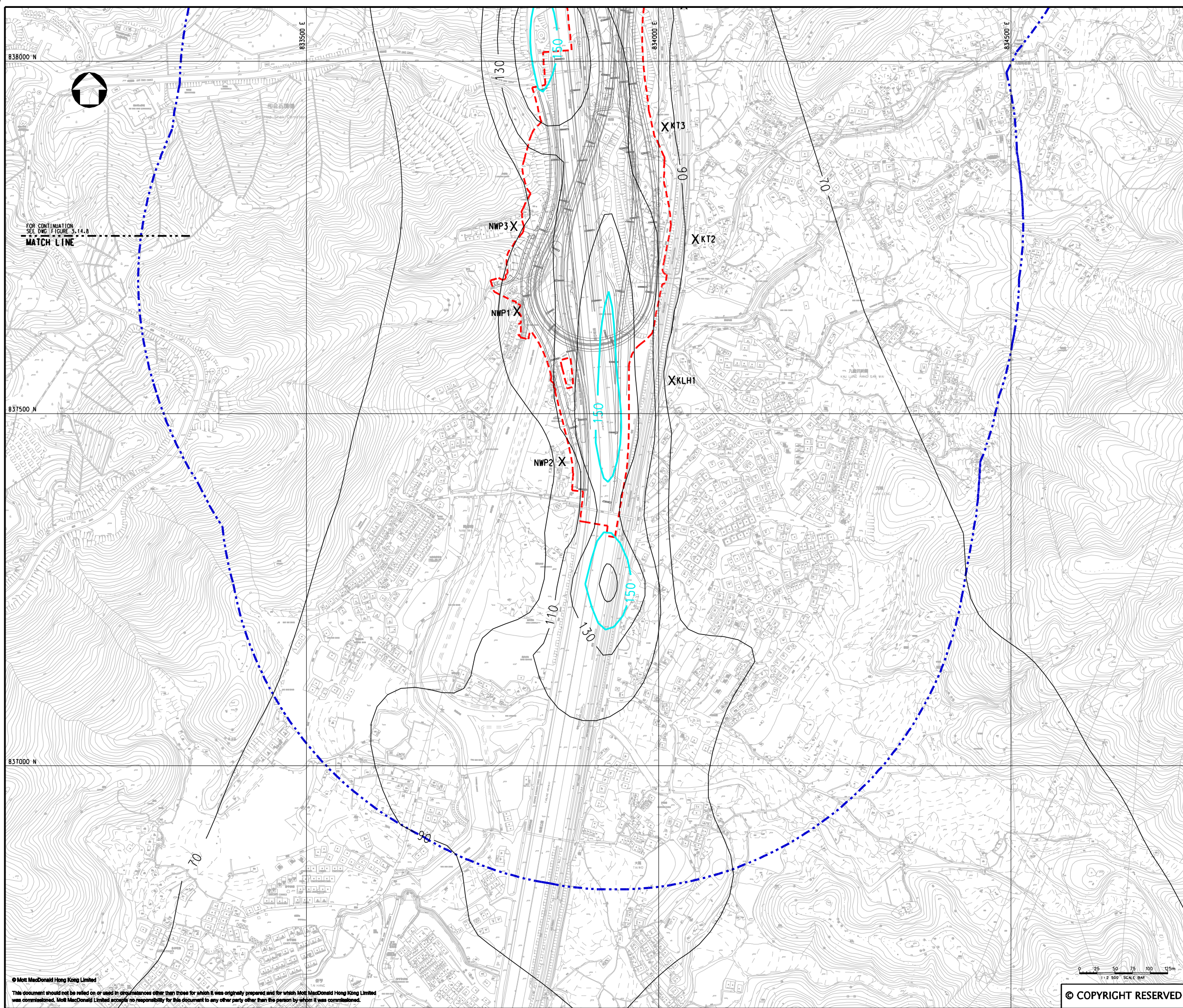
Title

CUMULATIVE RESULT - CONTOUR OF DAILY NO<sub>2</sub>  
CONCENTRATION ( $\mu\text{g}/\text{m}^3$ ) AT 1.5m ABOVE GROUND  
DURING OPERATIONAL PHASE FOR FANLING  
(STABILITY CLASS F)

(SHEET 1 OF 2)

Designed	HC	Eng.Chk.	EC
Drawn	MING	Coordination	EC
Dwg.Chk.	HC	Approved	HT
Scale at A1	Project	Status	
1:2500	255228	PRE	
CAD file	h:\255228\report\env\env\fig 3-14.8.dgn	Rev	
Drawing No	FIGURE 3.14.8	P2	





**KEY PLAN**  
SCALE 1:100000

**LEGEND:**

- 500m ASSESSMENT AREA
- TENTATIVE WORKS AREA
- AIR SENSITIVE RECEIVERS COMPLIED WITH AAO CRITERIA.
- AAO CRITERIA

P2	NOV 10	MMH	GENERAL REVISION	DC	HT
P1	OCT 10	MMH	FIRST ISSUE	DC	HT
Rev	Date	Drawn	Description	Ch'k'd	App'd

**Mott MacDonald**

20/F Two Landmark East  
100 How Ming Street  
Kowloon Tong, Kowloon  
Hong Kong  
T +852 2828 5757  
F +852 2827 1823  
W www.mottmac.com.hk

**CEDD**

**CIVIL ENGINEERING  
AND DEVELOPMENT  
DEPARTMENT**

**Project**  
AGREEMENT NO. CE45/2008(CE)  
LIANTANG/HEUNG YUEN WAI BOUNDARY  
CONTROL POINT AND ASSOCIATED WORKS

**Title**  
CUMULATIVE RESULT - CONTOUR OF DAILY NO<sub>2</sub>  
CONCENTRATION ( $\mu\text{g}/\text{m}^3$ ) AT 1.5m ABOVE GROUND  
DURING OPERATIONAL PHASE FOR FANLING  
(STABILITY CLASS F)  
(SHEET 2 OF 2)

Designed	HC	Eng.Chk.	EC
Drawn	MING	Coordination	EC
Dwg.Chk.	HC	Approved	HT
Scale at A1	Project	255228	Status
1:2500	CAD file	Report\env\env\01015\FIG 3-14.9.dgn	PRE
Drawing No	FIGURE 3.14.9	Rev	P2

0 25 50 75 100 125m  
1:2500 SCALE BAR

© COPYRIGHT RESERVED