

KEY PLAN
SCALE 1:100000

LEGEND:

- BOUNDARY OF HKSAR
- 500m ASSESSMENT AREA
- TENTATIVE WORKS AREA
- AIR SENSITIVE RECEIVERS COMPLIED WITH AQO CRITERIA.
- AQO CRITERIA

P2	DEC 10	MMH	GENERAL REVISION	DC	HT
P1	NOV 10	MMH	FIRST ISSUE	DC	HT
Rev	Date	Drawn	Description	Ch'k'd	App'd



20/F Two Landmark East
100 How Ming Street
Kowloon Tong, Kowloon
Hong Kong
T +852 2828 5757
F +852 2827 1823
W www.mottmac.com.hk

Client



CIVIL ENGINEERING
AND DEVELOPMENT
DEPARTMENT

Project

AGREEMENT NO. CE45/2008(CE)
LIANTANG/HEUNG YUEN WAI BOUNDARY
CONTROL POINT AND ASSOCIATED WORKS

Title

CUMULATIVE RESULT - CONTOUR OF ANNUAL RSP
CONCENTRATION ($\mu\text{g}/\text{m}^3$) AT 1.5m ABOVE GROUND
DURING OPERATIONAL PHASE FOR NORTHERN
SECTION

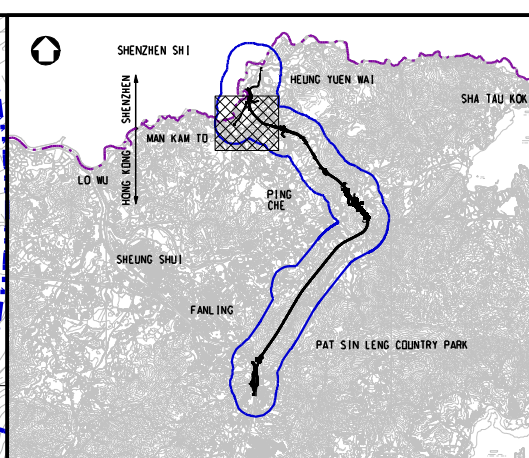
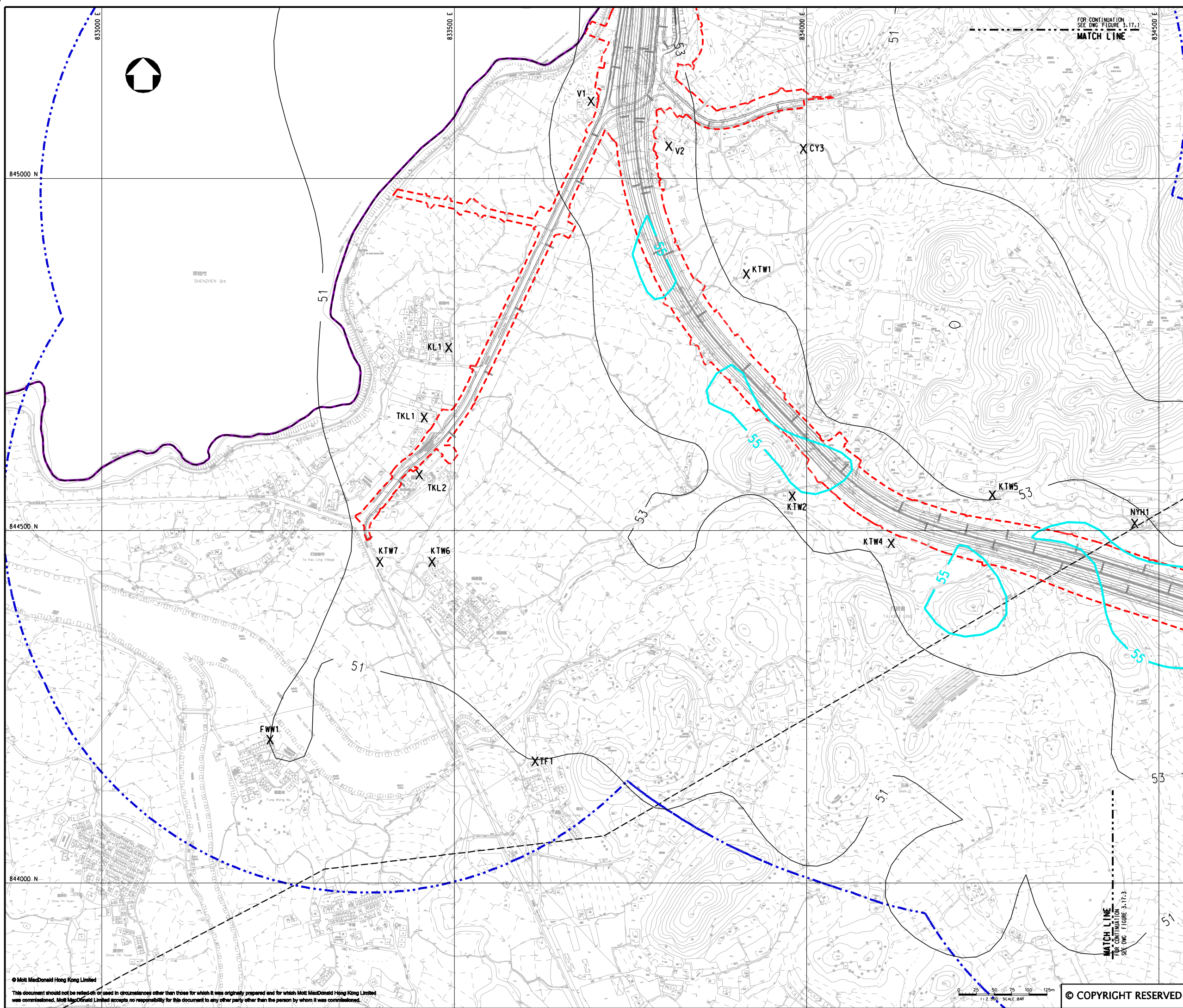
(SHEET 1 OF 4)

Designed	HC		Eng.Chk.	EC	
Drawn	MING		Coordination	EC	
Dwg.Chk.	HC		Approved	HT	
Scale at A1	1:2500	Project	255228	Status	PRE
Drawing No	FIGURE 3.17.1	CAD file	h:\255228\report\env\velo\0208\FIG 3-17.dgn	Rev	P2

© COPYRIGHT RESERVED

MATCH LINE
FOR CONTINUATION
SEE DWG FIGURE 3.17.2

1:2500 SCALE BAR



KEY PLAN
SCALE 1:100000

LEGEND:

- BOUNDARY OF HK SAR
- 500m ASSESSMENT AREA
- TENTATIVE WORKS AREA
- AIR SENSITIVE RECEIVERS COMPLIED WITH AAO CRITERIA.
- AAO CRITERIA

P2	DEC 10	MMH	GENERAL REVISION	DC	HT
P1	NOV 10	MMH	FIRST ISSUE	DC	HT
Rev	Date	Drawn	Description	Ch'k'd	App'd



20/F Two Landmark East
100 How Ming Street
Kowloon Tong, Kowloon
Hong Kong
T +852 2828 5757
F +852 2827 1823
W www.mottmac.com.hk

Client



CIVIL ENGINEERING
AND DEVELOPMENT
DEPARTMENT

Project

AGREEMENT NO. CE45/2008(CE)
LIANTANG/HEUNG YUEN WAI BOUNDARY
CONTROL POINT AND ASSOCIATED WORKS

Title

CUMULATIVE RESULT - CONTOUR OF ANNUAL RSP
CONCENTRATION ($\mu\text{g}/\text{m}^3$) AT 1.5m ABOVE GROUND
DURING OPERATIONAL PHASE FOR NORTHERN
SECTION

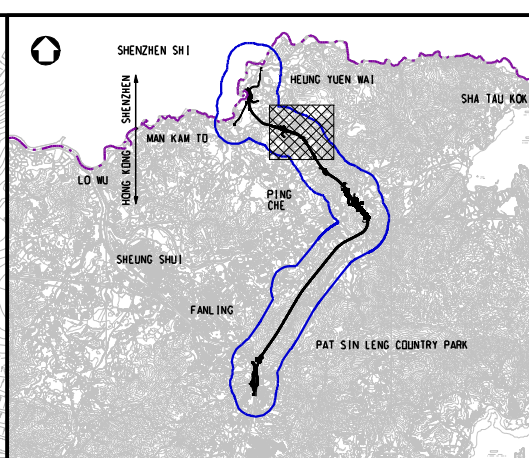
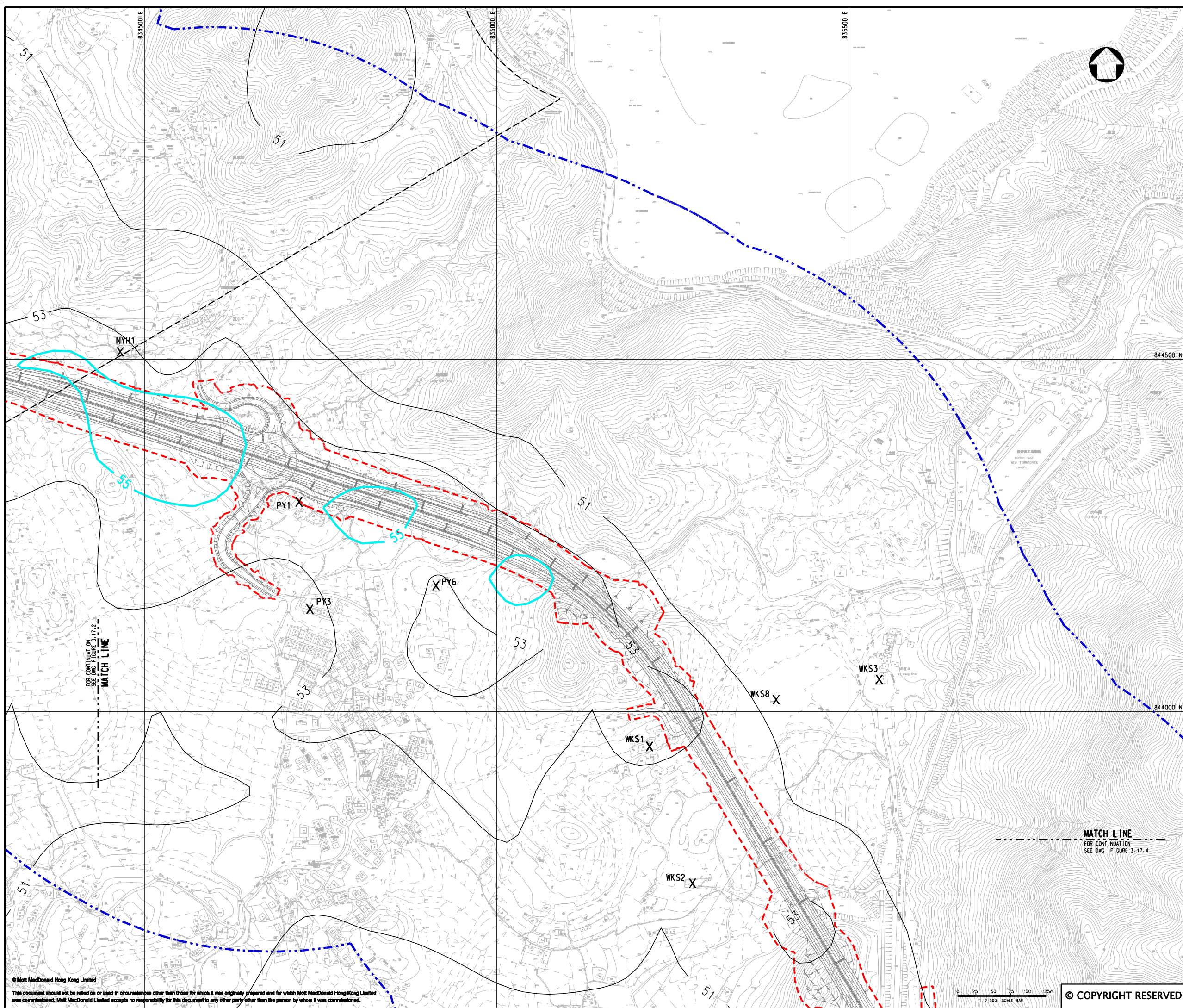
(SHEET 2 OF 4)

Designed	HC	Eng.Chk.	EC
Drawn	MING	Coordination	EC
Dwg.Chk.	HC	Approved	HT

Scale at A1	Project	Status
1:2500	255228	PRE
CAD file	Report	Rev
h:\255228\report\env\env\0208\FIG 3-17.2.dgn		P2

Drawing No	FIGURE 3.17.2
------------	---------------

© COPYRIGHT RESERVED



KEY PLAN
SCALE 1:100000

LEGEND:

- 500m ASSESSMENT AREA
- TENTATIVE WORKS AREA
- AIR SENSITIVE RECEIVERS COMPLIED WITH AOD CRITERIA.
- AOD CRITERIA

P2	DEC 10	MMH	GENERAL REVISION	DC	HT
P1	NOV 10	MMH	FIRST ISSUE	DC	HT
Rev	Date	Drawn	Description	Ch'k'd	App'd



20/F Two Landmark East
100 How Ming Street
Kowloon, Kowloon
Hong Kong
T +852 2828 5757
F +852 2827 1823
W www.mottmac.com.hk

Client

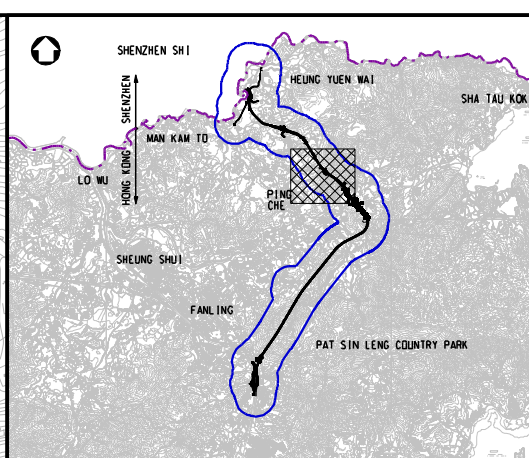
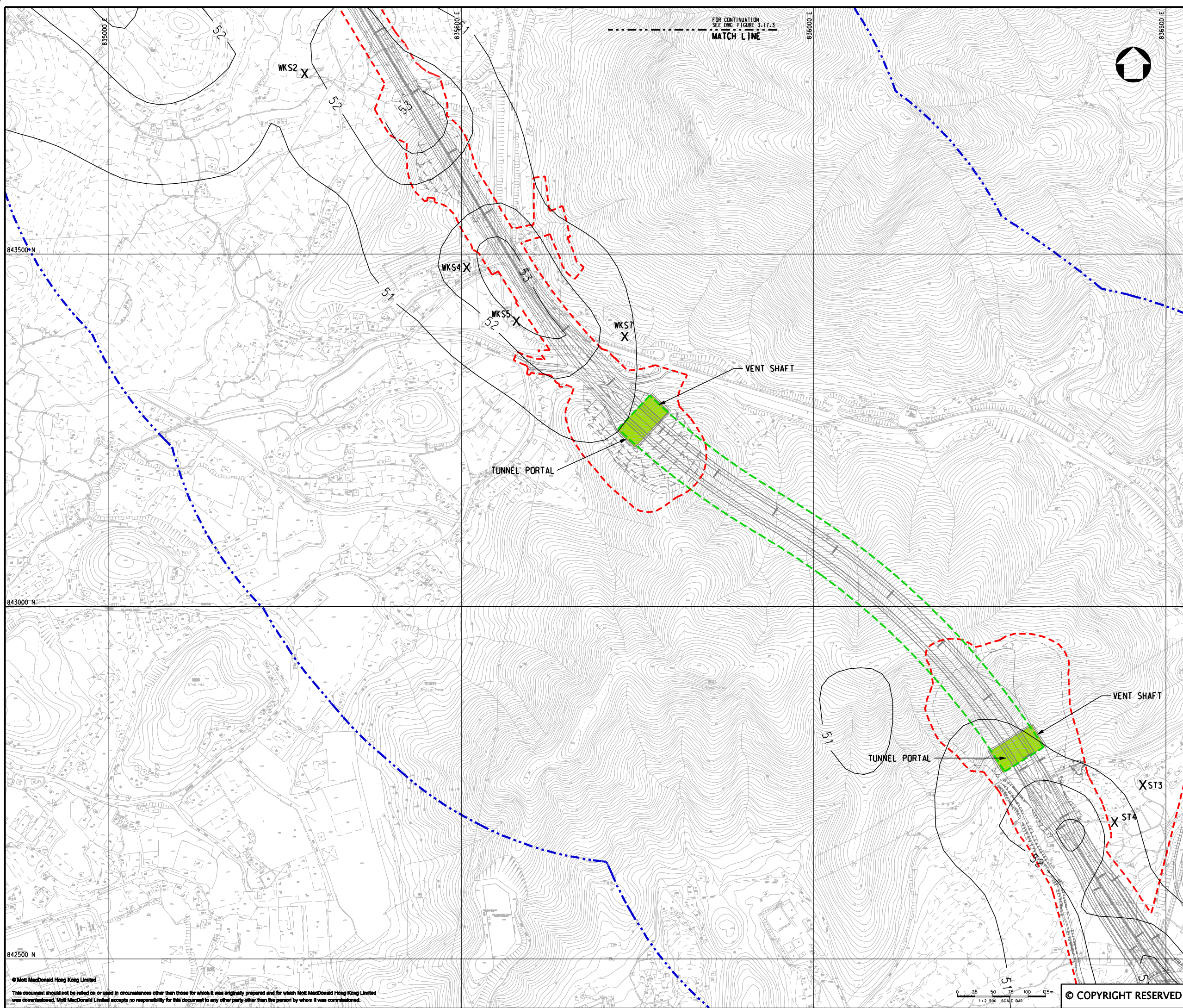
CIVIL ENGINEERING
AND DEVELOPMENT
DEPARTMENT

Project
AGREEMENT NO. CE45/2008(CE)
LIANTANG/HEUNG YUEN WAI BOUNDARY
CONTROL POINT AND ASSOCIATED WORKS

Title
CUMULATIVE RESULT - CONTOUR OF ANNUAL RSP
CONCENTRATION ($\mu\text{g}/\text{m}^3$) AT 1.5m ABOVE GROUND
DURING OPERATIONAL PHASE FOR NORTHERN
SECTION
(SHEET 3 OF 4)

Designed	HC	Eng.Chk.	EC
Drawn	MING	Coordination	EC
Dwg.Chk.	HC	Approved	HT
Scale at A1	Project	Status	
1:2500	255228	PRE	
CAD file	Report	Rev	
Figure 3.17.3	Figure 3.17.3	P2	

© COPYRIGHT RESERVED



KEY PLAN
SCALE 1:100000

LEGEND:

- 500m ASSESSMENT AREA
- TENTATIVE WORKS AREA
- TUNNEL SECTION
- PROPOSED TUNNEL VENTILATION BUILDING
- AIR SENSITIVE RECEIVERS COMPLIED WITH ADD CRITERIA.

P2	DEC 10	MMH	GENERAL REVISION	DC	HT
P1	NOV 10	MMH	FIRST ISSUE	DC	HT
Rev	Date	Drawn	Description	Ch'k'd	App'd

Mott MacDonald

20/F Two Landmark East
100 How Ming Street
Kowloon, Kowloon
Hong Kong
T +852 2828 5757
F +852 2827 1829
W www.mottmac.com.hk

Client

CEDD

**CIVIL ENGINEERING
AND DEVELOPMENT
DEPARTMENT**

Project

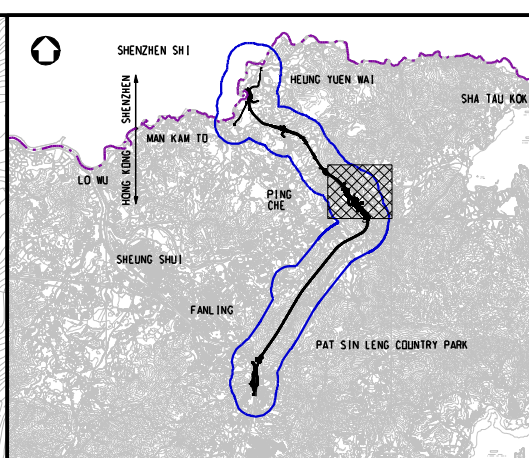
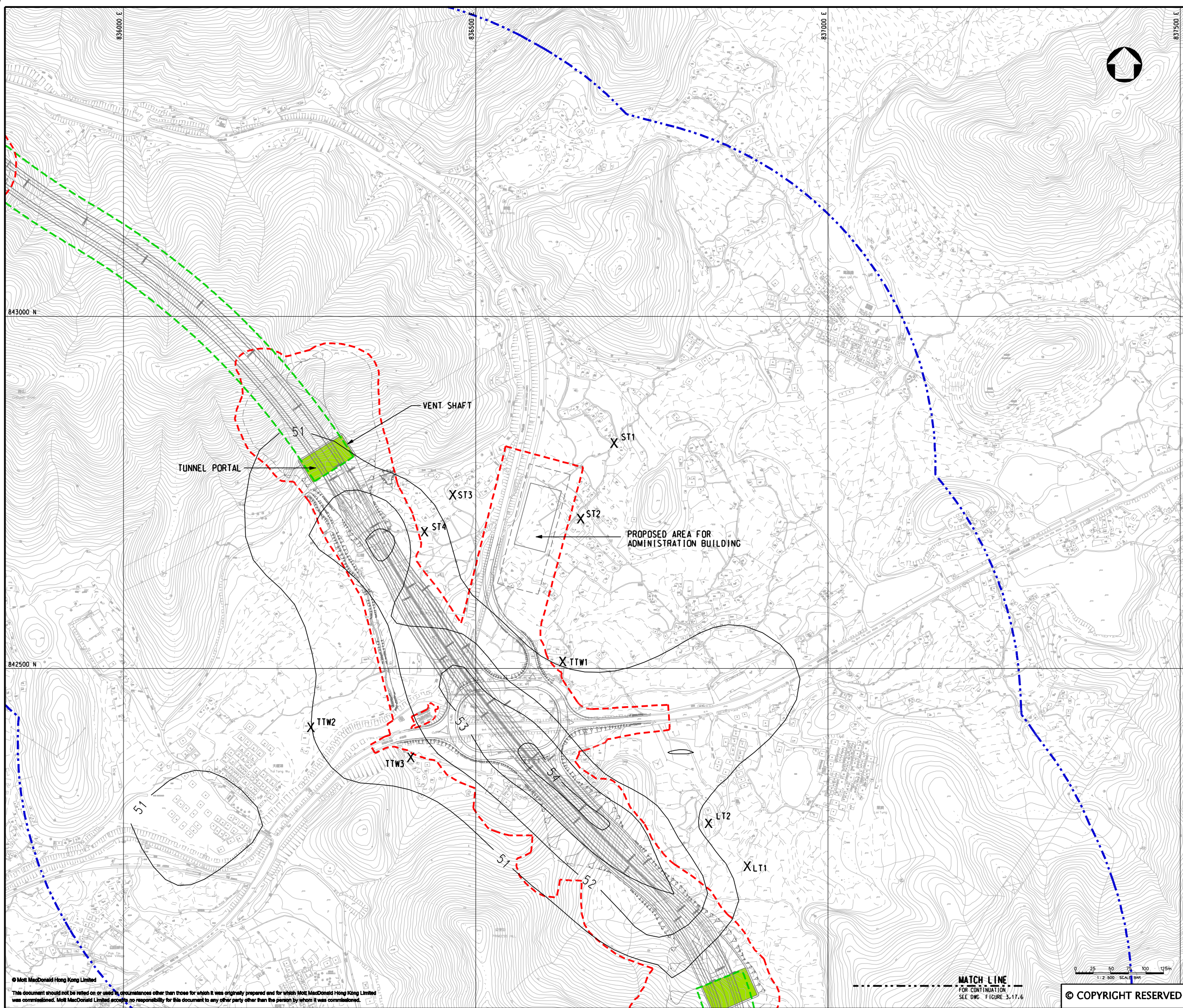
AGREEMENT NO. CE45/2008(CE)
LIANTANG/HEUNG YUEN WAI BOUNDARY
CONTROL POINT AND ASSOCIATED WORKS

Title

CUMULATIVE RESULT - CONTOUR OF ANNUAL RSP
CONCENTRATION ($\mu\text{g}/\text{m}^3$) AT 1.5m ABOVE GROUND
DURING OPERATIONAL PHASE FOR NORTHERN
SECTION

(SHEET 4 OF 4)

Designed	HC	Eng.Chk.	EC
Drawn	MING	Coordination	EC
Dwg.Chk.	HC	Approved	HT
Scale at A1	Project	Status	
1:2500	255228	PRE	
CAD file	Report	Rev	
Figure 3.17.4	P2		



KEY PLAN
SCALE 1:100000

LEGEND:

- 500m ASSESSMENT AREA
- TENTATIVE WORKS AREA
- TUNNEL SECTION
- PROPOSED TUNNEL VENTILATION BUILDING
- AIR SENSITIVE RECEIVERS COMPLIED WITH AOD CRITERIA.

P2	DEC 10	MMH	GENERAL REVISION	DC	HT
P1	NOV 10	MMH	FIRST ISSUE	DC	HT
Rev	Date	Drawn	Description	Ch'k'd	App'd

Mott MacDonald

20/F Two Landmark East
100 How Ming Street
Kowloon, Kowloon
Hong Kong
T +852 2828 5757
F +852 2827 1823
W www.mottmac.com.hk

Client

CEDD

**CIVIL ENGINEERING
AND DEVELOPMENT
DEPARTMENT**

Project

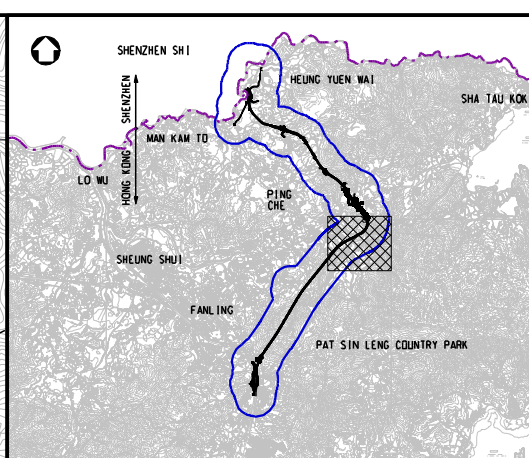
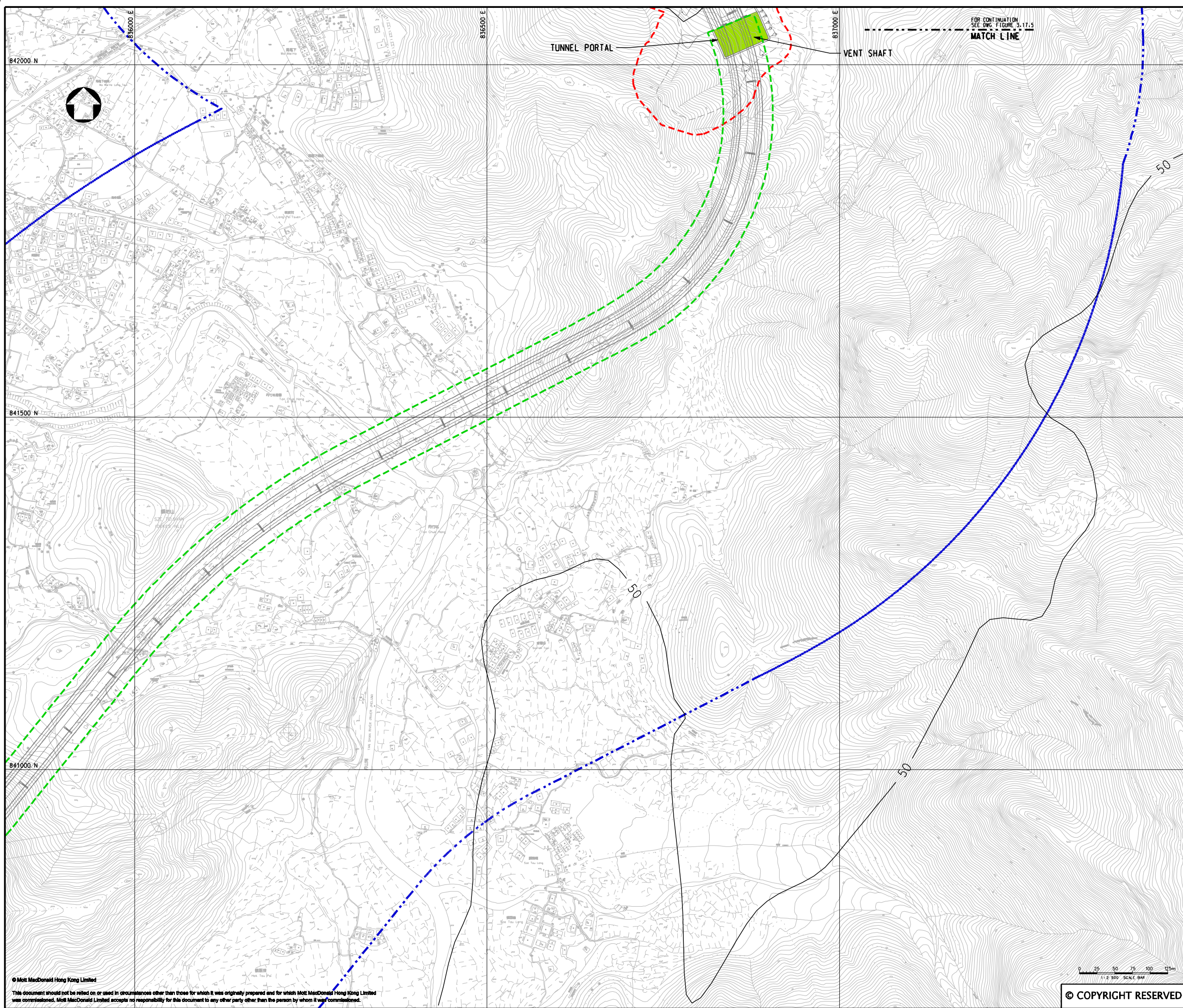
AGREEMENT NO. CE45/2008(CE)
LIANTANG/HEUNG YUEN WAI BOUNDARY
CONTROL POINT AND ASSOCIATED WORKS

Title

CUMULATIVE RESULT - CONTOUR OF ANNUAL RSP
CONCENTRATION ($\mu\text{g}/\text{m}^3$) AT 1.5m ABOVE GROUND
DURING OPERATIONAL PHASE FOR LOI TUNG

(SHEET 1 OF 2)

Designed	HC	Eng.Chk.	EC	
Drawn	MING	Coordination	EC	
Dwg.Chk.	HC	Approved	HT	
Scale at A1	Project	255228	Status	
1:2500	CAD file	h:\255228\report\env\velo\0208\FIG 3-17.5.dgn	PRE	
Drawing No	FIGURE 3.17.5	Rev	P2	



KEY PLAN

SCALE 1:100000

LEGEND:

- 500m ASSESSMENT AREA
- TENTATIVE WORKS AREA
- TUNNEL SECTION
- PROPOSED TUNNEL VENTILATION BUILDING

P2	DEC 10	MMH	GENERAL REVISION	DC	HT
P1	NOV 10	MMH	FIRST ISSUE	DC	HT
Rev	Date	Drawn	Description	Ch'k'd	App'd



20/F Two Landmark East
100 How Ming Street
Kowloon
Hong Kong
T +852 2828 5757
F +852 2827 1823
W www.mottmac.com.hk

Client



CIVIL ENGINEERING
AND DEVELOPMENT
DEPARTMENT

Project

AGREEMENT NO. CE45/2008(CE)
LIANTANG/HEUNG YUEN WAI BOUNDARY
CONTROL POINT AND ASSOCIATED WORKS

Title

CUMULATIVE RESULT - CONTOUR OF ANNUAL RSP
CONCENTRATION ($\mu\text{g}/\text{m}^3$) AT 1.5m ABOVE GROUND
DURING OPERATIONAL PHASE FOR LOI TUNG

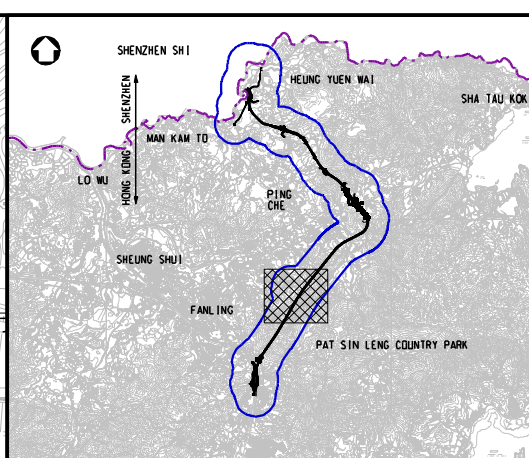
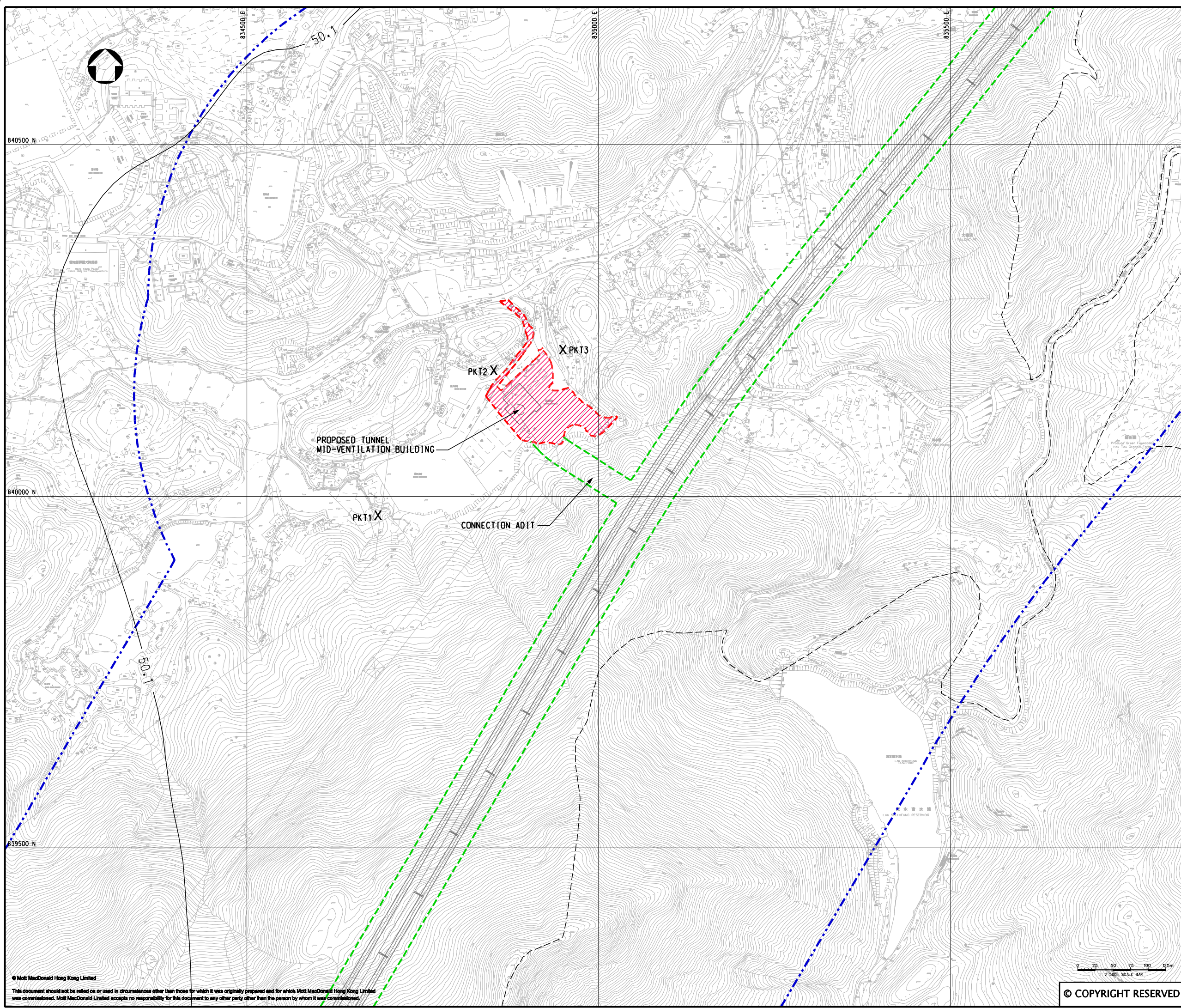
(SHEET 2 OF 2)

Designed	HC		Eng.Chk.	EC	
Drawn	MING		Coordination	EC	
Dwg.Chk.	HC		Approved	HT	
Scale at A1	Project		255228	Status	
1:2500	CAD file		h:\255228\report\env\lo\0208\FIG 3-17.6.dgn	PRE	
Drawing No	FIGURE 3.17.6		Rev	P2	

© COPYRIGHT RESERVED

© Mott MacDonald Hong Kong Limited

This document should not be relied on or used in circumstances other than those for which it was originally prepared and for which Mott MacDonald Hong Kong Limited was commissioned. Mott MacDonald Limited accepts no responsibility for this document to any other party other than the person by whom it was commissioned.



KEY PLAN
SCALE 1:100000

- LEGEND:
- 500m ASSESSMENT AREA
 - TENTATIVE WORKS AREA
 - TUNNEL SECTION
 - PROPOSED AREA FOR MID-VENTILATION BUILDING
 - AIR SENSITIVE RECEIVERS COMPLIED WITH AOD CRITERIA.

P2	DEC 10	MMH	GENERAL REVISION	DC	HT
P1	NOV 10	MMH	FIRST ISSUE	DC	HT
Rev	Date	Drawn	Description	Ch'k'd	App'd



20/F Two Landmark East
100 How Ming Street
Kowloon, Kowloon
Hong Kong
T +852 2828 5757
F +852 2827 1823
W www.mottmac.com.hk

Client	CIVIL ENGINEERING AND DEVELOPMENT DEPARTMENT
--------	--

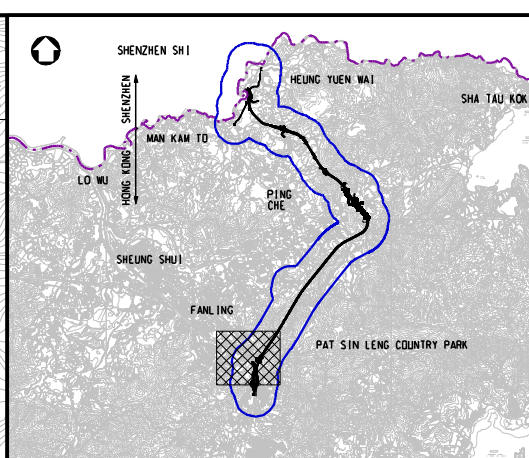
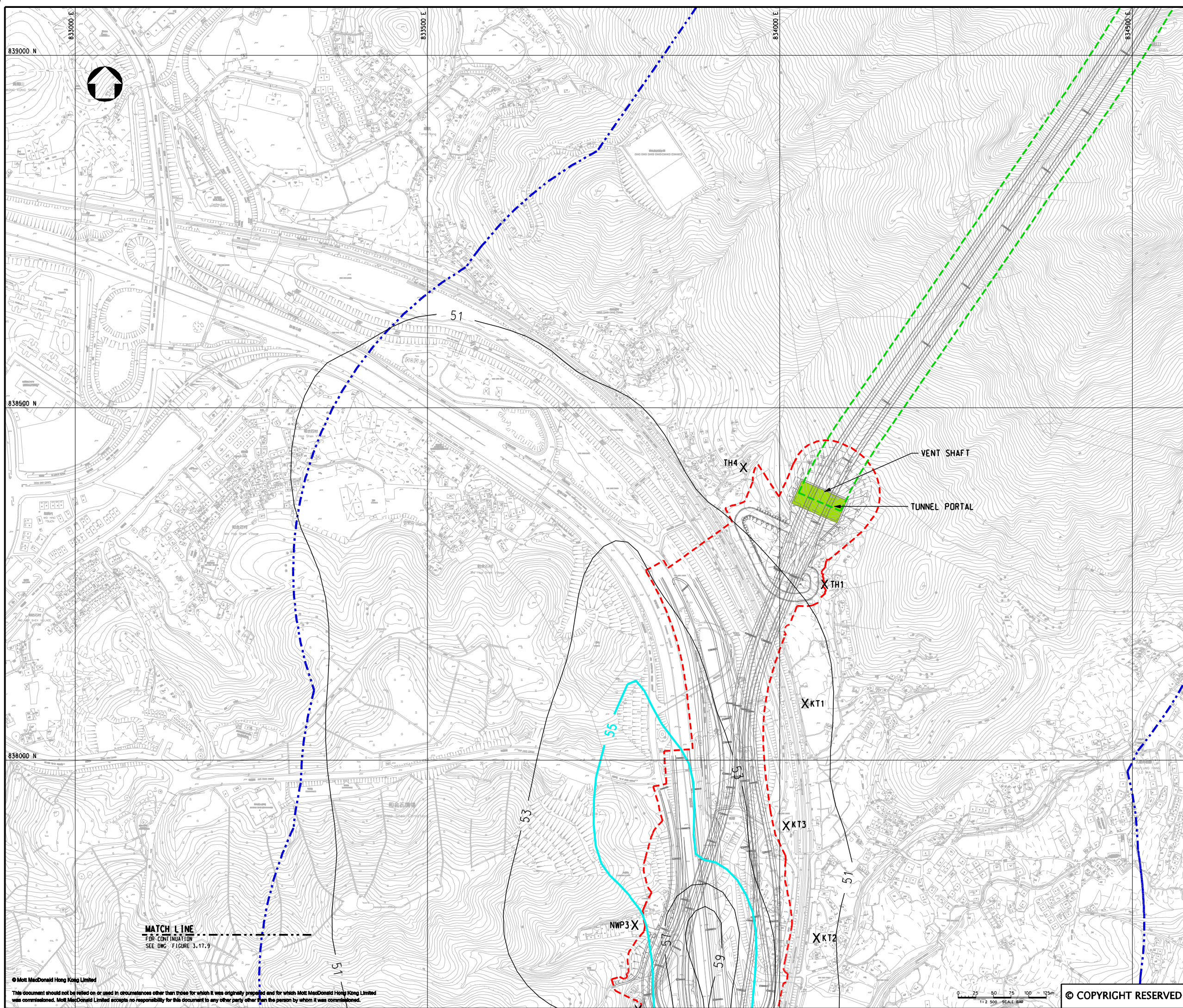
Project	AGREEMENT NO. CE45/2008(CE) LIANTANG/HEUNG YUEN WAI BOUNDARY CONTROL POINT AND ASSOCIATED WORKS
---------	---

Title	CUMULATIVE RESULT - CONTOUR OF ANNUAL RSP CONCENTRATION ($\mu\text{g}/\text{m}^3$) AT 1.5m ABOVE GROUND DURING OPERATIONAL PHASE FOR PO KAK TSAI
-------	---

Designed	HC	Eng.Chk.	EC
Drawn	MING	Coordination	EC
Dwg.Chk.	HC	Approved	HT
Scale at A1	Project	255228	Status
1:2500	CAD file	h:\255228\report\env\velo\0208\FIG 3-17.7.dgn	PRE
Drawing No	FIGURE 3.17.7	Rev	P2

0 25 50 75 100 125m
1:12,500 SCALE BAR

© COPYRIGHT RESERVED



KEY PLAN
SCALE 1:100000

LEGEND:

- 500m ASSESSMENT AREA
- TENTATIVE WORKS AREA
- TUNNEL SECTION
- PROPOSED TUNNEL VENTILATION BUILDING
- AIR SENSITIVE RECEIVERS COMPLIED WITH ADO CRITERIA.
- ADO CRITERIA

P2	DEC 10	MMH	GENERAL REVISION	DC	HT
P1	NOV 10	MMH	FIRST ISSUE	DC	HT
Rev	Date	Drawn	Description	Ch'k'd	App'd

Mott MacDonald

20/F Two Landmark East
100 How Ming Street
Kowloon
Hong Kong
T +852 2828 5757
F +852 2827 1823
W www.mottmac.com.hk

Client

CEDD

**CIVIL ENGINEERING
AND DEVELOPMENT
DEPARTMENT**

Project

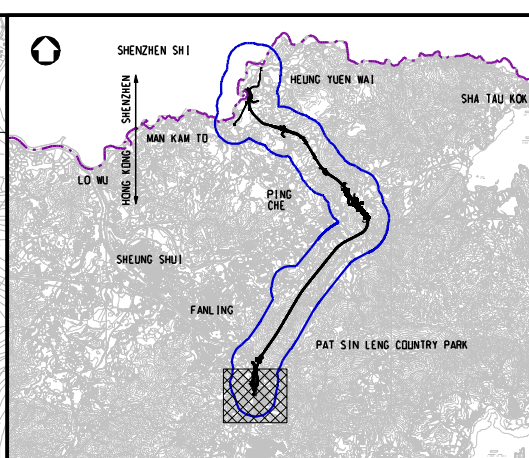
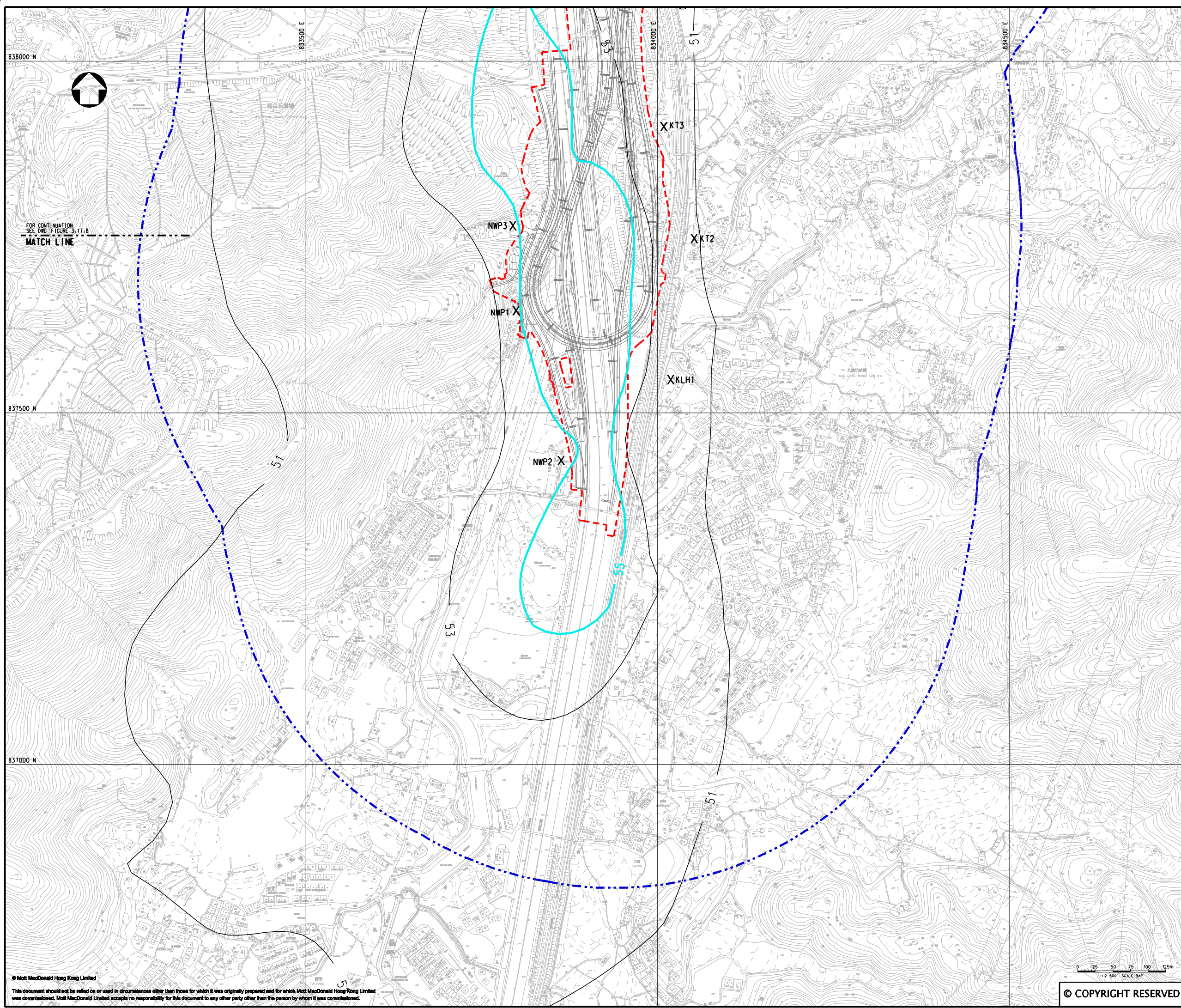
AGREEMENT NO. CE45/2008(CE)
LIANTANG/HEUNG YUEN WAI BOUNDARY
CONTROL POINT AND ASSOCIATED WORKS

Title

CUMULATIVE RESULT - CONTOUR OF ANNUAL RSP
CONCENTRATION ($\mu\text{g}/\text{m}^3$) AT 1.5m ABOVE GROUND
DURING OPERATIONAL PHASE FOR FANLING

(SHEET 1 OF 2)

Designed	HC	Eng.Chk.	EC
Drawn	MING	Coordination	EC
Dwg.Chk.	HC	Approved	HT
Scale at A1	Project	Status	
1:2500	255228	PRE	
CAD file	Report	Rev	
Figure 3.17.8		P2	



KEY PLAN
SCALE 1:100000

LEGEND:

500m ASSESSMENT AREA

TENTATIVE WORKS AREA

X

AIR SENSITIVE RECEIVERS COMPLIED WITH AOD CRITERIA.

AOD CRITERIA


P2	DEC 10	MMH	GENERAL REVISION	DC	HT
P1	NOV 10	MMH	FIRST ISSUE	DC	HT
Rev	Date	Drawn	Description	Ch'k'd	App'd



Mott MacDonald

20/F Two Landmark East
100 How Ming Street
Kowloon, Hong Kong
T +852 2828 5757
F +852 2827 1823
W www.mottmac.com.hk

Client



CIVIL ENGINEERING
AND DEVELOPMENT
DEPARTMENT

Project

AGREEMENT NO. CE45/2008(CE)
LIANTANG/HEUNG YUEN WAI BOUNDARY
CONTROL POINT AND ASSOCIATED WORKS

Title

CUMULATIVE RESULT - CONTOUR OF ANNUAL RSP
CONCENTRATION ($\mu\text{g}/\text{m}^3$) AT 1.5m ABOVE GROUND
DURING OPERATIONAL PHASE FOR FANLING

(SHEET 2 OF 2)

Designed	HC		Eng.Chk.	EC	
Drawn	MING		Coordination	EC	
Dwg.Chk.	HC		Approved	HT	
Scale at A1	Project	255228	Status		
1:2500	CAD file	h:\255228\report\env\velo\0208\FIG 3-17.9.dgn	PRE		
Drawing No			Rev		
			P2		