

KEY PLAN
SCALE 1:100000

- LEGEND:
- BOUNDARY OF HKSAR
 - 500m ASSESSMENT AREA
 - TENTATIVE WORKS AREA
 - AIR SENSITIVE RECEIVERS COMPLIED WITH ADO CRITERIA.
 - AIR SENSITIVE RECEIVERS EXCEEDED ADO CRITERIA.

P2	NOV 10	MMH	FINAL ISSUE	HC	HT
P1	OCT 10	MMH	FIRST ISSUE	HC	HT
Rev	Date	Drawn	Description	Ch'k'd	App'd

20/F Two Landmark East
100 How Ming Street
Kowloon, Kowloon
Hong Kong
T +852 2828 6787
F +852 2827 1823
W www.mottmac.com.hk

Client

CIVIL ENGINEERING
AND DEVELOPMENT
DEPARTMENT

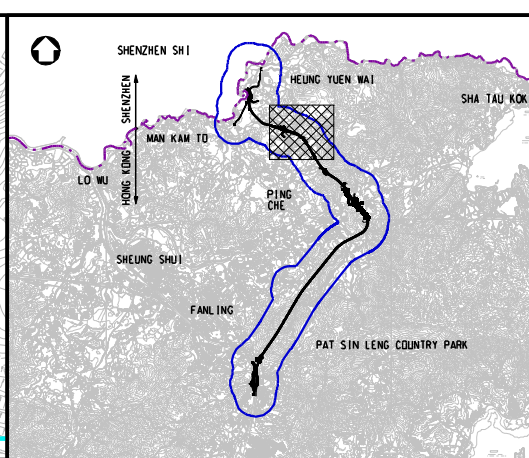
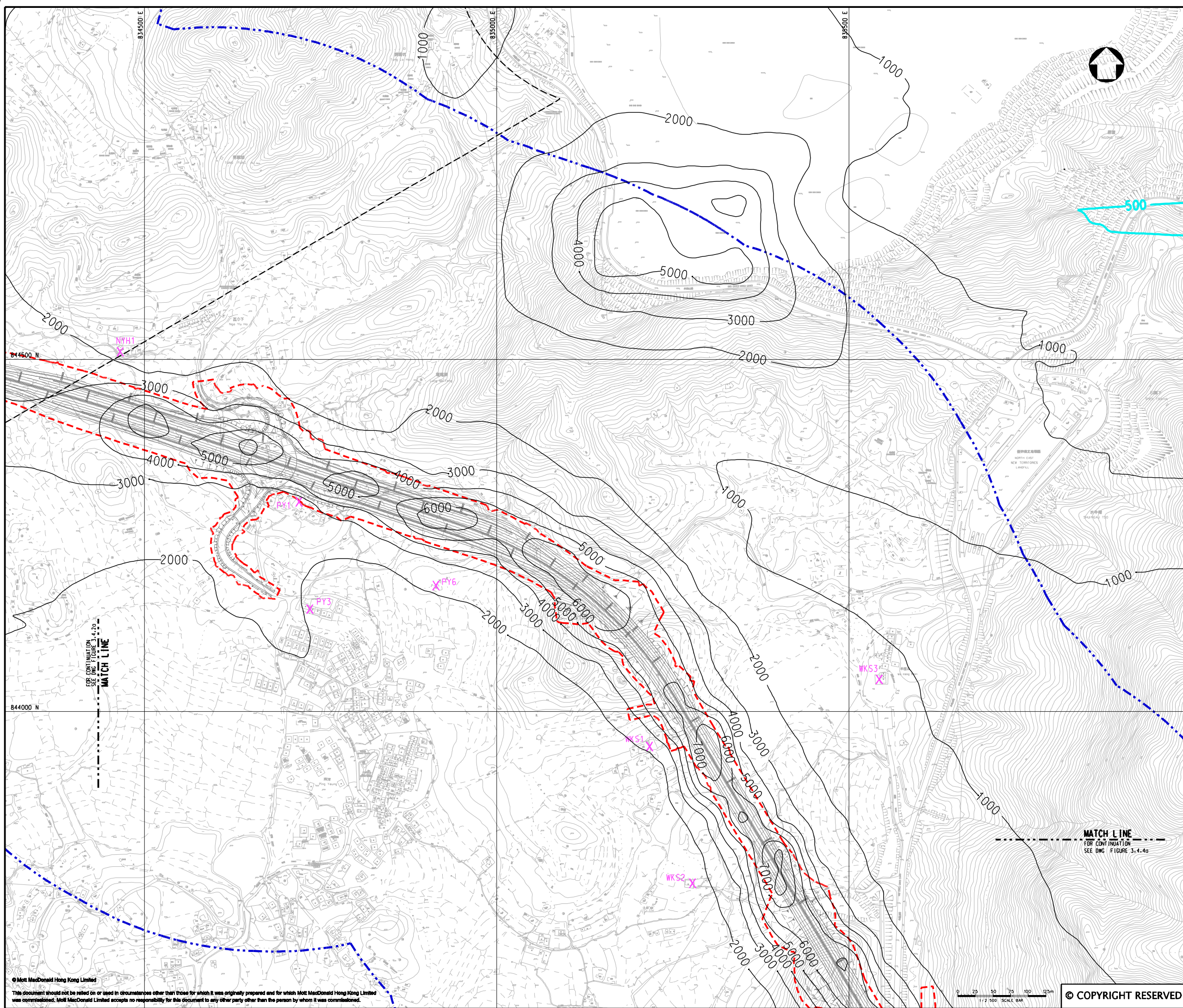
Project
AGREEMENT NO. CE45/2008(CE)
LIANTANG/HEUNG YUEN WAI BOUNDARY
CONTROL POINT AND ASSOCIATED WORKS

Title
CUMULATIVE RESULT - CONTOUR OF TIER 1
HOURLY TSP CONCENTRATION ($\mu\text{g}/\text{m}^3$) AT 1.5m
ABOVE GROUND DURING CONSTRUCTION PHASE
(UNMITIGATED) FOR NORTHERN SECTION
(SHEET 1 OF 4)

Designed	HC	Eng.Chk.	EC
Drawn	MING	Coordination	EC
Dwg.Chk.	HC	Approved	HT
Scale at A1	Project	255228	Status
1:2500	CAD file	J:\255228\REPORT\ENV\ENV\A1\015\FIG 3-4.1a.dgn	PRE
Drawing No	FIGURE 3.4.1a	Rev	P2

MATCH LINE
FOR CONTINUATION
SEE DWG. FIGURE 3.4.2a

© COPYRIGHT RESERVED



KEY PLAN
SCALE 1:100000

LEGEND:

- 500m ASSESSMENT AREA
- TENTATIVE WORKS AREA
- AOD CRITERIA
- AIR SENSITIVE RECEIVERS EXCEEDED AOD CRITERIA.

P2	NOV 10	MMH	FINAL ISSUE	HC	HT
P1	OCT 10	MMH	FIRST ISSUE	HC	HT
Rev	Date	Drawn	Description	Ch'k'd	App'd

Mott MacDonald

20/F Two Landmark East
100 How Ming Street
Kowloon, Kowloon
Hong Kong
T +852 2828 5757
F +852 2827 1823
W www.mottmac.com.hk

Client

CEDD

**CIVIL ENGINEERING
AND DEVELOPMENT
DEPARTMENT**

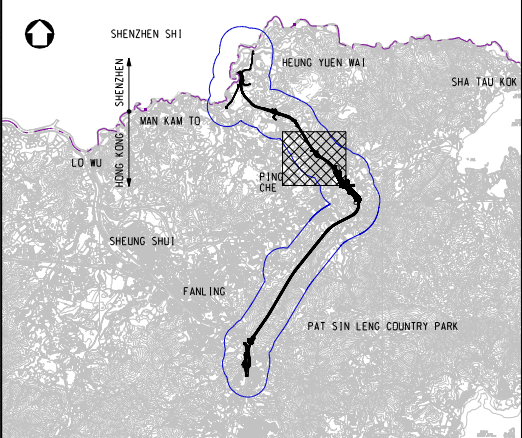
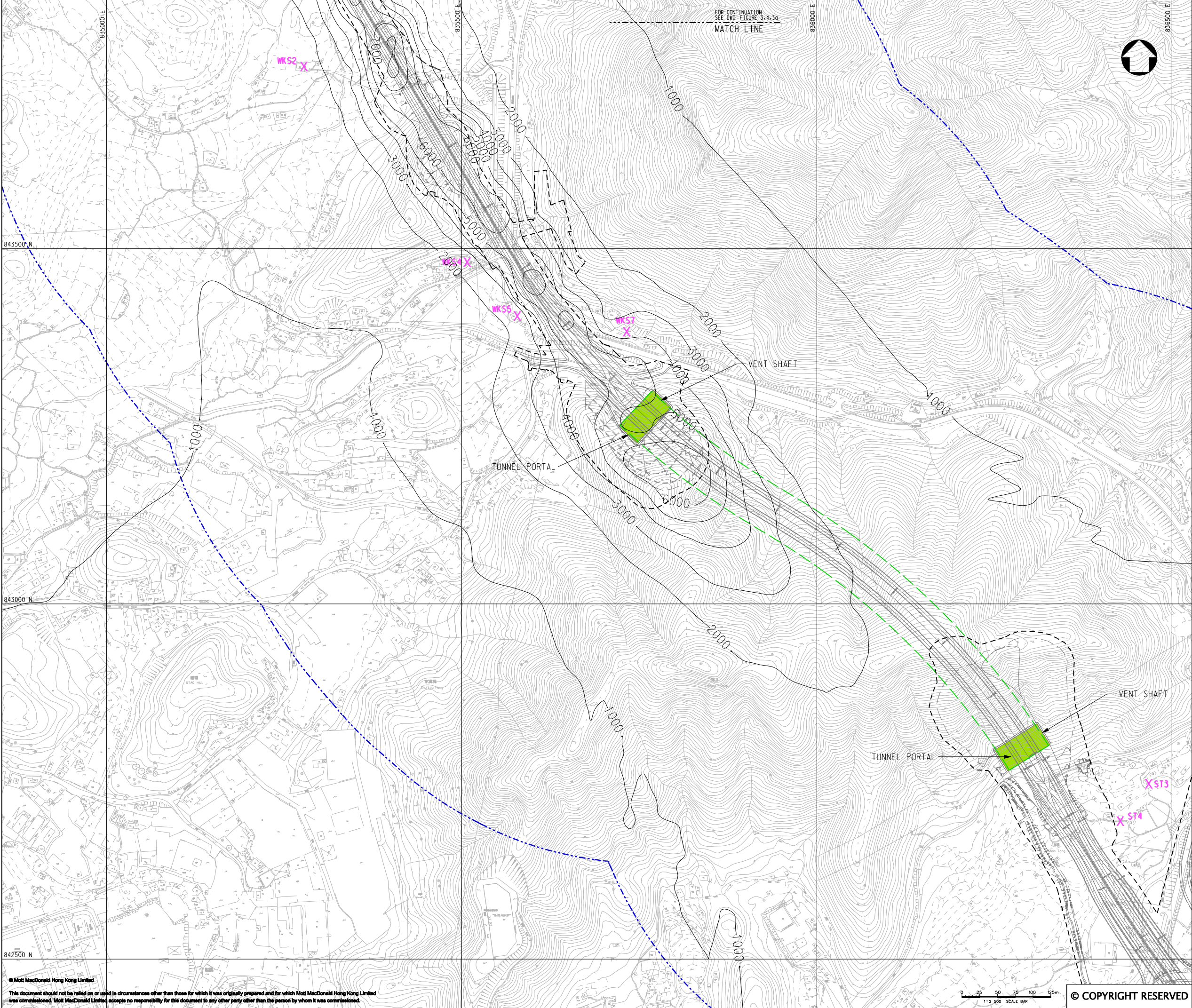
Project

AGREEMENT NO. CE45/2008(CE)
LIANTANG/HEUNG YUEN WAI BOUNDARY
CONTROL POINT AND ASSOCIATED WORKS

Title

CUMULATIVE RESULT - CONTOUR OF TIER 1
HOURLY TSP CONCENTRATION ($\mu\text{g}/\text{m}^3$) AT 1.5m
ABOVE GROUND DURING CONSTRUCTION PHASE
(UNMITIGATED) FOR NORTHERN SECTION
(SHEET 3 OF 4)

Designed	HC	Eng.Chk.	EC	
Drawn	MING	Coordination	EC	
Dwg.Chk.	HC	Approved	HT	
Scale at A1	Project	255228	Status	
1:2500	CAD file	Project	PRE	
Drawing No	FIGURE 3.4.3a	Rev	P2	



KEY PLAN
SCALE 1:100000

LEGEND:

- 500m ASSESSMENT AREA
- TENTATIVE WORKS AREA
- TUNNEL SECTION
- PROPOSED TUNNEL VENTILATION BUILDING
- AIR SENSITIVE RECEIVERS COMPLIED WITH ADO CRITERIA.
- AIR SENSITIVE RECEIVERS EXCEEDED ADO CRITERIA.

P2	NOV 10	MMH	FINAL ISSUE	HC	HT
P1	OCT 10	MMH	FIRST ISSUE	HC	HT
Rev	Date	Drawn	Description	Chk'd	App'd

Mott MacDonald

20/F Two Landmark East
100 How Ming Street
Kowloon, Kowloon
Hong Kong
T +852 2828 6787
F +852 2827 1823
W www.mottmac.com.hk

Client

CEDD

**CIVIL ENGINEERING
AND DEVELOPMENT
DEPARTMENT**

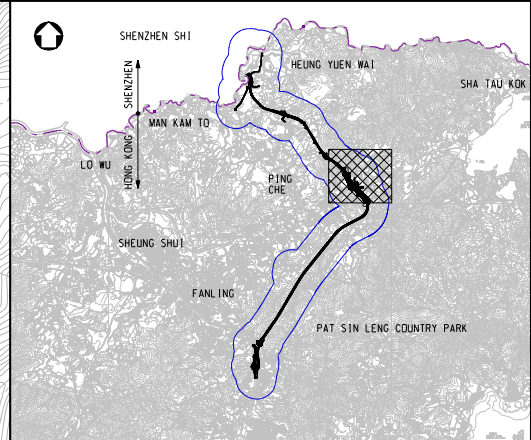
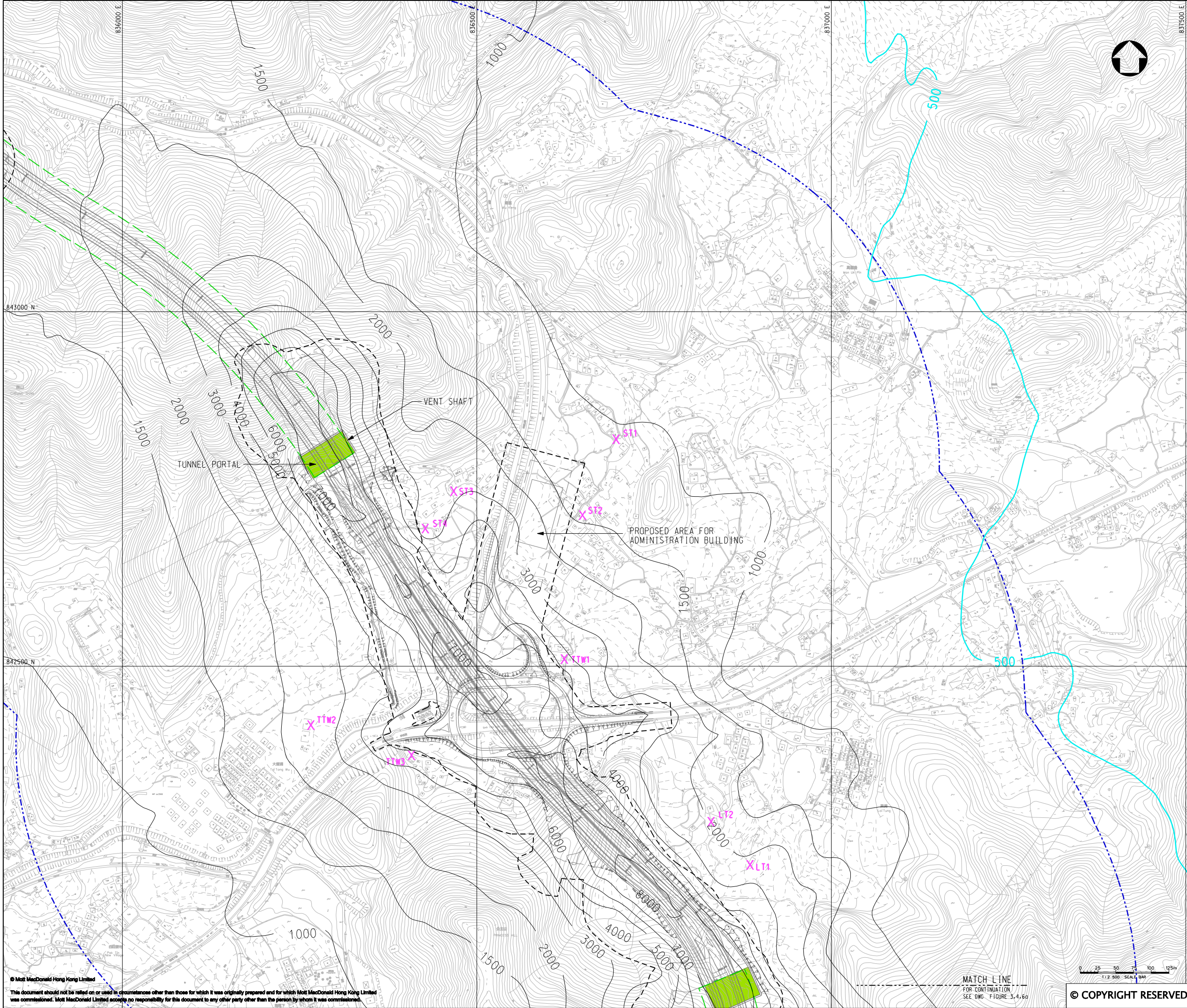
Project

AGREEMENT NO. CE45/2008(CE)
LIANTANG/HEUNG YUEN WAI BOUNDARY
CONTROL POINT AND ASSOCIATED WORKS

Title

CUMULATIVE RESULT - CONTOUR OF TIER 1
HOURLY TSP CONCENTRATION ($\mu\text{g}/\text{m}^3$) AT 1.5m
ABOVE GROUND DURING CONSTRUCTION PHASE
(UNMITIGATED) FOR NORTHERN SECTION
(SHEET 4 OF 4)

Designed	HC	Eng.Cht.	EC	
Drawn	MING	Coordination	EC	
Dwg.Cht.	HC	Approved	HT	
Scale at A1	1:2500	Project	255228	Status
		CAD File	h:\255228\REPORT\ENV\ENV\A1\015\FIG 3-4.4a.dgn	PRE
Drawing No				Rev
				P2



KEY PLAN
SCALE 1:100000

LEGEND:

- 500m ASSESSMENT AREA
- TENTATIVE WORKS AREA
- TUNNEL SECTION
- ADD CRITERIA
- PROPOSED TUNNEL VENTILATION BUILDING
- X AIR SENSITIVE RECEIVERS COMPLIED WITH ADD CRITERIA.
- X AIR SENSITIVE RECEIVERS EXCEEDED ADD CRITERIA.

P2	NOV 10	MMH	FINAL ISSUE	HC	HT
P1	OCT 10	MMH	FIRST ISSUE	HC	HT
Rev	Date	Drawn	Description	Ch'k'd	App'd

Mott MacDonald

20/F Two Landmark East
100 How Ming Street
Kowloon, Kowloon
Hong Kong
T +852 2828 6787
F +852 2827 1823
W www.mottmac.com.hk

Client

CEDD

**CIVIL ENGINEERING
AND DEVELOPMENT
DEPARTMENT**

Project

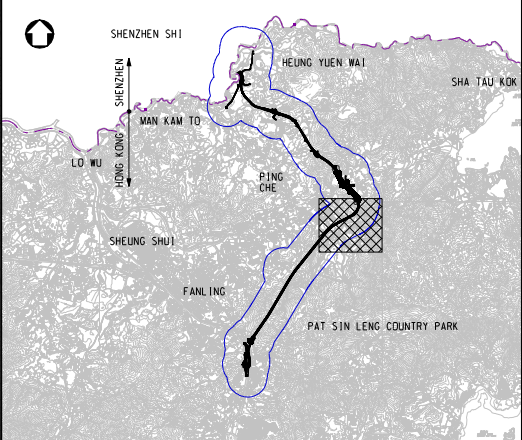
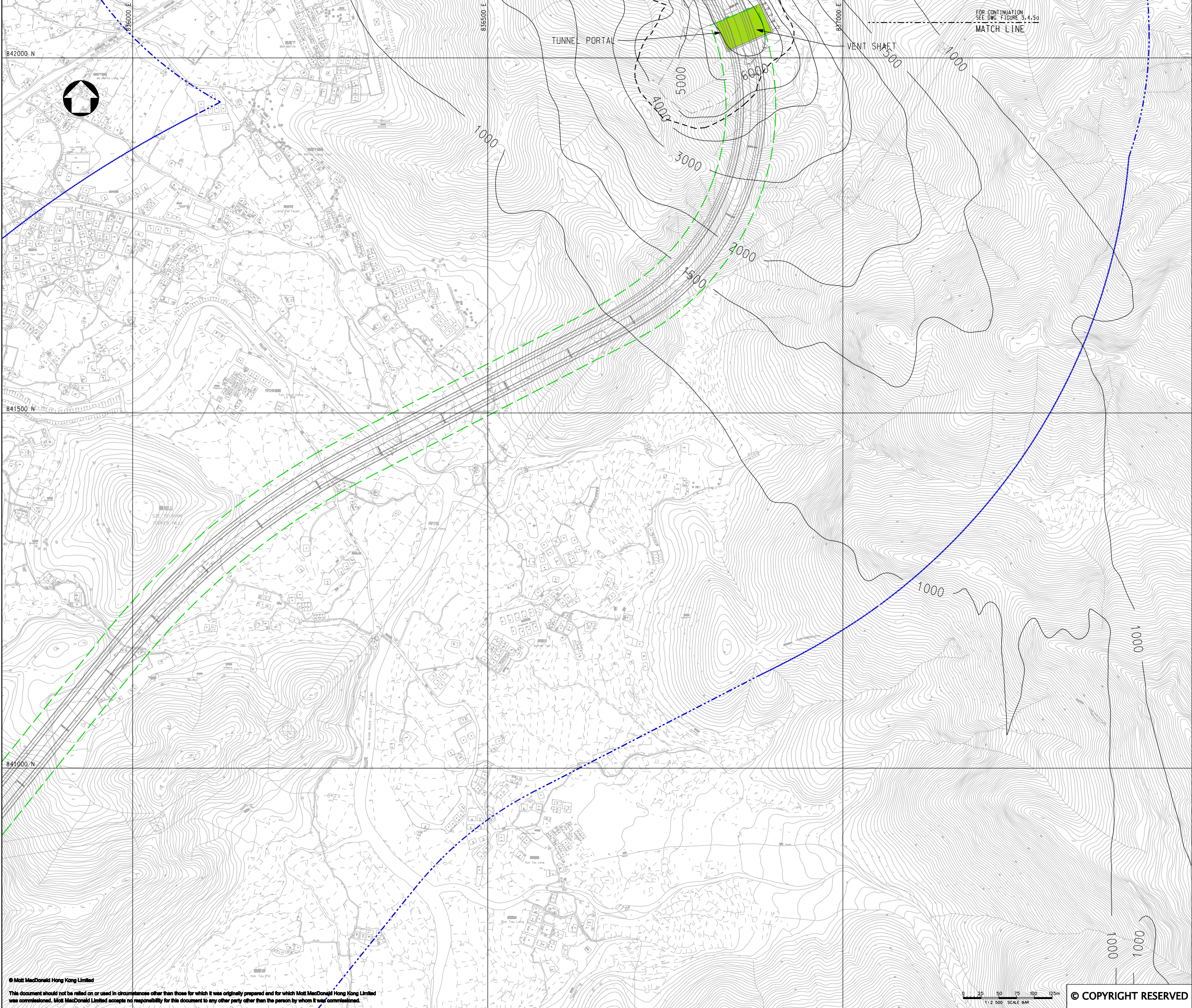
AGREEMENT NO. CE45/2008(CE)
LIANTANG/HEUNG YUEN WAI BOUNDARY
CONTROL POINT AND ASSOCIATED WORKS

Title

CUMULATIVE RESULT - CONTOUR OF TIER 1
HOURLY TSP CONCENTRATION ($\mu\text{g}/\text{m}^3$) AT 1.5m
ABOVE GROUND DURING CONSTRUCTION PHASE
(UNMITIGATED) FOR LOI TUNG

(SHEET 1 OF 2)

Designed	HC	Eng.Chk.	EC	
Drawn	MING	Coordination	EC	
Dwg.Chk.	HC	Approved	HT	
Scale at A1	1:2500	Project	255228	Status
		CAD File	JK255228\REPORT\ENV\IAN\0105\FIG 3-4.5a.dgn	PRE
Drawing No	FIGURE 3.4.5a	Rev	P2	



KEY PLAN
SCALE 1:100000

- LEGEND:
- 500m ASSESSMENT AREA
 - TENTATIVE WORKS AREA
 - TUNNEL SECTION
 - PROPOSED TUNNEL VENTILATION BUILDING

P1	OCT 10	MMH	FIRST ISSUE	HC	HT
Rev	Date	Drawn	Description	Ch'k'd	App'd



20/F Two Landmark East
100 How Ming Street
Kowloon, Kowloon
Hong Kong
T +852 2828 6787
F +852 2827 1823
W www.mottmac.com.hk

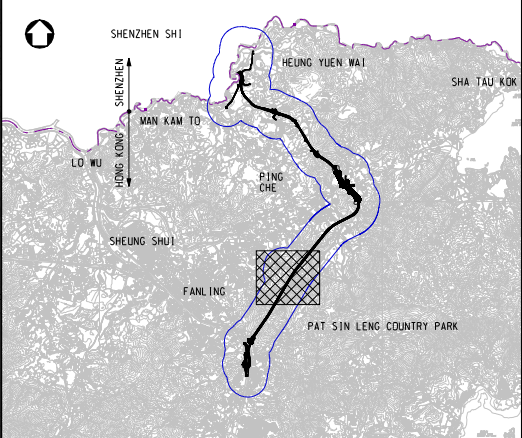
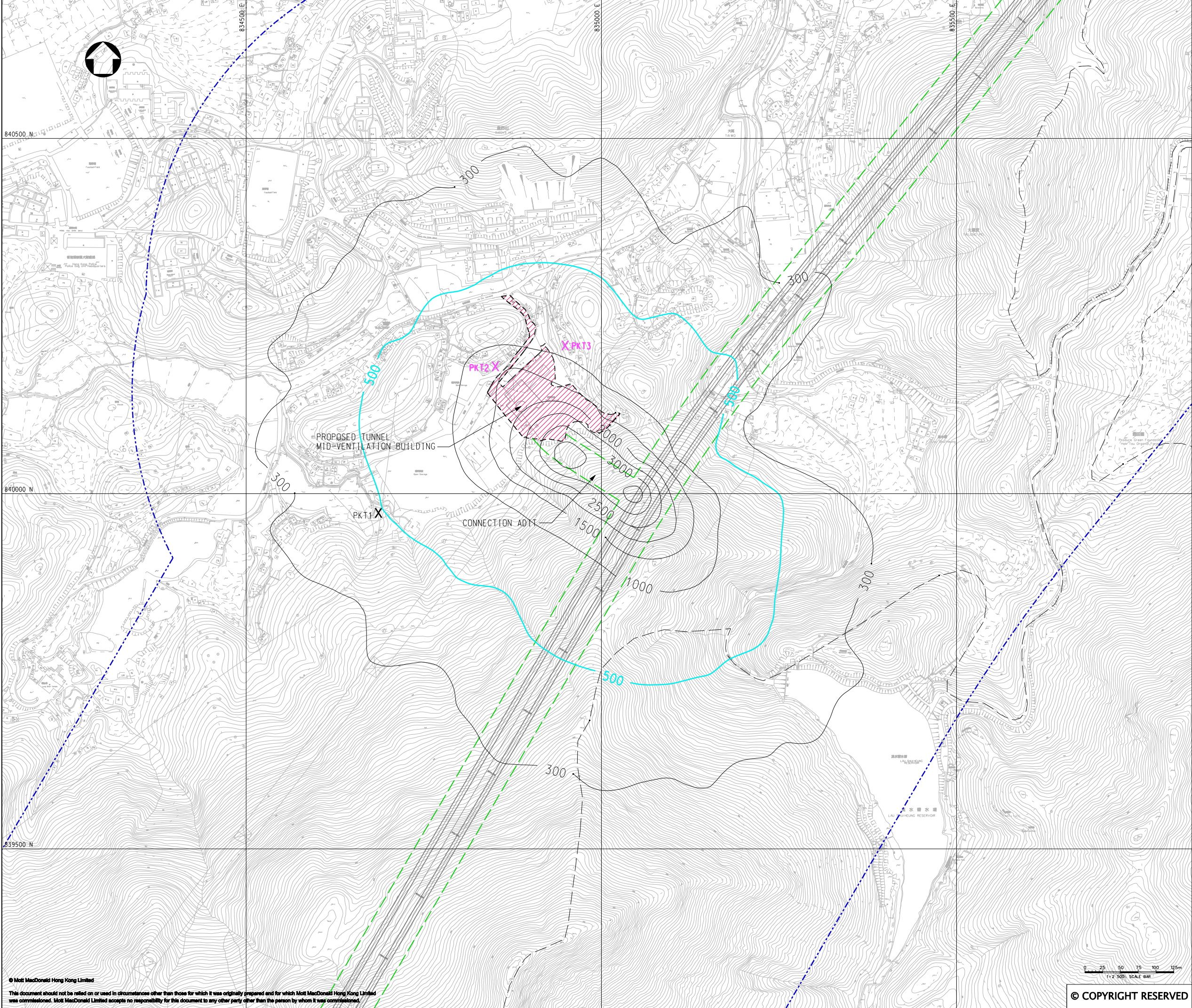


CIVIL ENGINEERING
AND DEVELOPMENT
DEPARTMENT

Project
AGREEMENT NO. CE45/2008(CE)
LIANTANG/HEUNG YUEN WAI BOUNDARY
CONTROL POINT AND ASSOCIATED WORKS

Title
CUMULATIVE RESULT - CONTOUR OF TIER 1
HOURLY TSP CONCENTRATION ($\mu\text{g}/\text{m}^3$) AT 1.5m
ABOVE GROUND DURING CONSTRUCTION PHASE
(UNMITIGATED) FOR LOI TUNG
(SHEET 2 OF 2)

Designed	HC	Eng.Cht.	EC	
Drawn	MING	Coordination	EC	
Dwg.Cht.	HC	Approved	HT	
Scale at A1 1:2500	Project 255228	Status PRE		
Drawing No	CAD File J:\255228\REPORT\ENV\EA\N0105\FIG 3-4.6a.dgn	Rev P1		



KEY PLAN
SCALE 1:100000

LEGEND:

500m ASSESSMENT AREA

TENTATIVE WORKS AREA

TUNNEL SECTION

AQO CRITERIA

PROPOSED AREA FOR MID-VENTILATION BUILDING

X AIR SENSITIVE RECEIVERS COMPLIED WITH AQO CRITERIA.

X AIR SENSITIVE RECEIVERS EXCEEDED AQO CRITERIA.

P2	NOV 10	MMH	FINAL ISSUE	HC	HT
P1	OCT 10	MMH	FIRST ISSUE	HC	HT
Rev	Date	Drawn	Description	Ch'k'd	App'd

20/F Two Landmark East
100 How Ming Street
Kowloon
Hong Kong
T +852 2828 6787
F +852 2827 1823
W www.mottmac.com.hk

Client

CIVIL ENGINEERING
AND DEVELOPMENT
DEPARTMENT

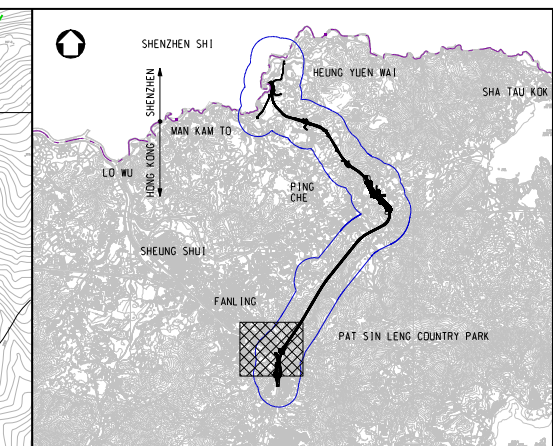
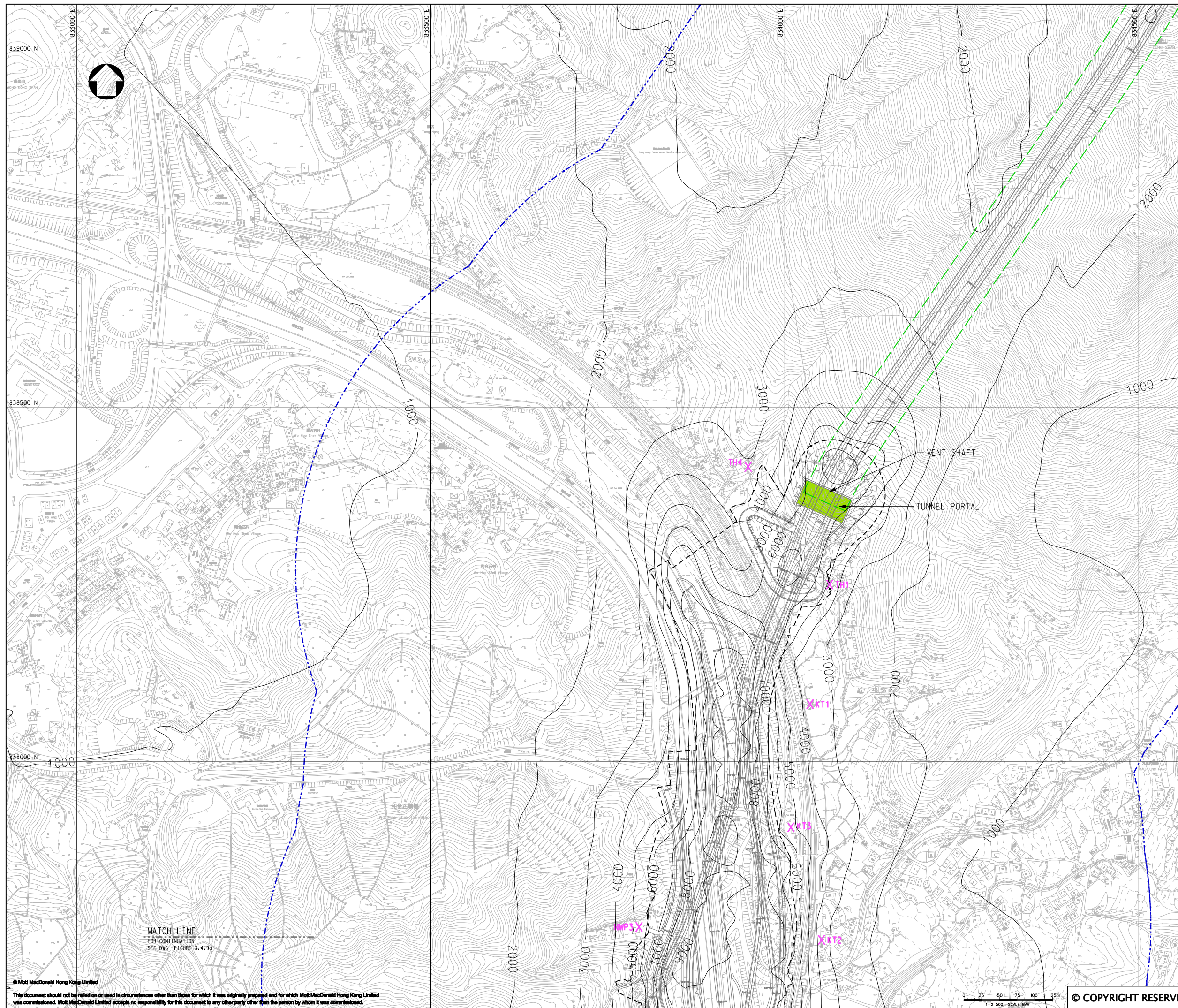
Project

AGREEMENT NO. CE45/2008(CE)
LIANTANG/HEUNG YUEN WAI BOUNDARY
CONTROL POINT AND ASSOCIATED WORKS

Title







CUMULATIVE RESULT - CONTOUR OF TIER 1
HOURLY TSP CONCENTRATION ($\mu\text{g}/\text{m}^3$) AT 1.5m
ABOVE GROUND DURING CONSTRUCTION PHASE
(UNMITIGATED) FOR PO KAK TSAI

Designed	HC	Eng.Chk.	EC	
Drawn	MING	Coordination	EC	
Dwg.Chk.	HC	Approved	HT	
Scale at A1	Project	255228	Status	
1:2500	CAD file	255228\REPORT\ENV\EA\1005\FIG 3-4.7a.dgn	PRE	
Drawing No	FIGURE 3.4.7a	Rev	P2	



KEY PLAN
SCALE 1:100000

LEGEND:

-  500m ASSESSMENT AREA
 TENTATIVE WORKS AREA
 TUNNEL SECTION
 PROPOSED TUNNEL VENTILATION BUILDING
 AIR SENSITIVE RECEIVERS COMPLIED WITH AAO CRITERIA.
 AIR SENSITIVE RECEIVERS EXCEEDED AAO CRITERIA.

P2	NOV 10	MMH	FINAL ISSUE	HC	HT
P1	OCT 10	MMH	FIRST ISSUE	HC	HT
Rev	Date	Drawn	Description	Ch'k'd	App'd



20/F Two Landmark East
100 How Ming Street
Kwun Tong, Kowloon
Hong Kong
T +852 2828 5757
F +852 2827 1823
W www.mottmac.com.hk

Client	
--------	--



**CIVIL ENGINEERING
AND DEVELOPMENT
DEPARTMENT**

Project	
---------	--

AGREEMENT NO. CE45/2008(CE)
LIANTANG/HEUNG YUEN WAI BOUNDARY
CONTROL POINT AND ASSOCIATED WORKS

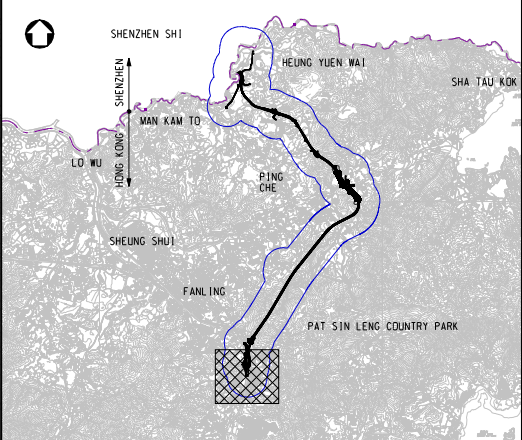
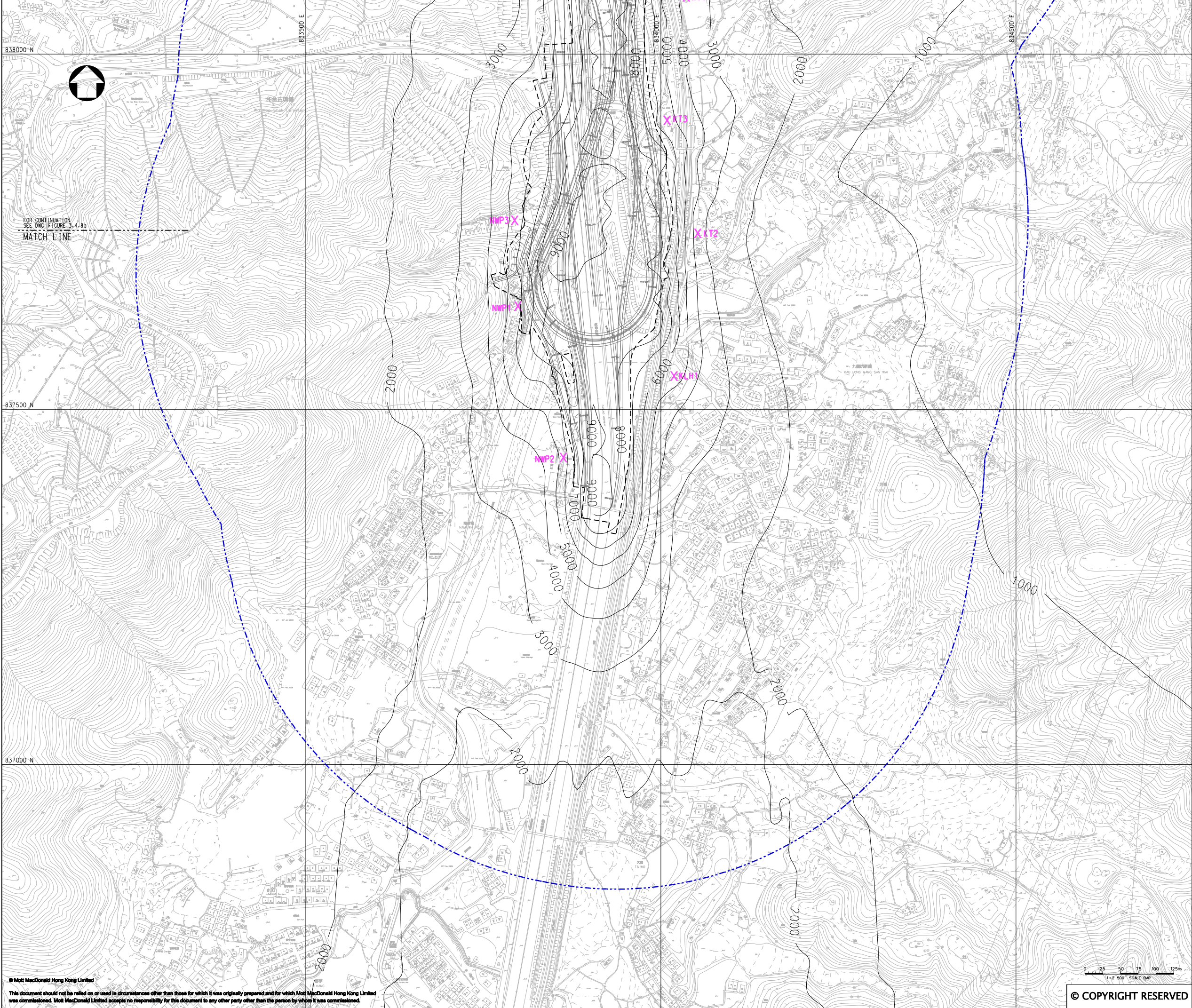
No.	Title
1	...
2	...
3	...
4	...
5	...
6	...
7	...
8	...
9	...
10	...
11	...
12	...
13	...
14	...
15	...
16	...
17	...
18	...
19	...
20	...
21	...
22	...
23	...
24	...
25	...
26	...
27	...
28	...
29	...
30	...
31	...
32	...
33	...
34	...
35	...
36	...
37	...
38	...
39	...
40	...
41	...
42	...
43	...
44	...
45	...
46	...
47	...
48	...
49	...
50	...
51	...
52	...
53	...
54	...
55	...
56	...
57	...
58	...
59	...
60	...
61	...
62	...
63	...
64	...
65	...
66	...
67	...
68	...

CUMULATIVE RESULT - CONTOUR OF TIER 1
HOURLY TSP CONCENTRATION ($\mu\text{g}/\text{m}^3$) AT 1.5m
ABOVE GROUND DURING CONSTRUCTION PHASE
(UNMITIGATED) FOR FANLING (SHEET 1 OF 2)

Designed	HC	Eng.Chk.	EC	
Drawn	MING	Coordination	EC	
Desg.Chk.	HC	Approved	HT	
Scale at A1	Project 255228			Status
1:2500	CAD File j:\255228\REPORT\ENV\ENV\JOB1\FIG 3-4.8a.dgn			PRE
Drawing No	FIGURE 3.4.8a			Rev P2

FIGURE 3.4.8a

Rev P2



KEY PLAN
SCALE 1:100000

- LEGEND:
- 500m ASSESSMENT AREA
 - TENTATIVE WORKS AREA
 - X AIR SENSITIVE RECEIVERS COMPLIED WITH AOO CRITERIA.
 - X AIR SENSITIVE RECEIVERS EXCEEDED AOO CRITERIA.

P2	NOV 10	MMH	FINAL ISSUE	HC	HT
P1	OCT 10	MMH	FIRST ISSUE	HC	HT
Rev	Date	Drawn	Description	Ch'k'd	App'd

20/F Two Landmark East
100 How Ming Street
Kowloon, Kowloon
Hong Kong
T +852 2828 6787
F +852 2827 1823
W www.mottmac.com.hk

Client

CIVIL ENGINEERING
AND DEVELOPMENT
DEPARTMENT

Project
AGREEMENT NO. CE45/2008(CE)
LIANTANG/HEUNG YUEN WAI BOUNDARY
CONTROL POINT AND ASSOCIATED WORKS

Title
CUMULATIVE RESULT - CONTOUR OF TIER 1
HOURLY TSP CONCENTRATION ($\mu\text{g}/\text{m}^3$) AT 1.5m
ABOVE GROUND DURING CONSTRUCTION PHASE
(UNMITIGATED) FOR FANLING
(SHEET 2 OF 2)

Designed	HC		Eng.Chk.	EC	
Drawn	MING		Coordination	EC	
Dwg.Chk.	HC		Approved	HT	
Scale at A1 1:2500	Project 255228			Status PRE	
	CAD file J:\255228\REPORT\ENV\ENV\A1\015\FIG 3-4.9a.dgn				
Drawing No FIGURE 3.4.9a				Rev P2	