

KEY PLAN  
SCALE 1:100000


- LEGEND:
- BOUNDARY OF HKSAR
  - 500m ASSESSMENT AREA
  - TENTATIVE WORKS AREA
  - AQO CRITERIA
  - AIR SENSITIVE RECEIVERS COMPLIED WITH AQO CRITERIA.
  - AIR SENSITIVE RECEIVERS EXCEEDED AQO CRITERIA.

P2	NOV 10	MMH	FINAL ISSUE	HC	HT
P1	OCT 10	MMH	FIRST ISSUE	HC	HT
Rev	Date	Drawn	Description	Ch'k'd	App'd



20/F Two Landmark East  
100 How Ming Street  
Kowloon, Kowloon  
Hong Kong  
T +852 2828 6787  
F +852 2827 1823  
W www.mottmac.com.hk

Client

 **CIVIL ENGINEERING  
AND DEVELOPMENT  
DEPARTMENT**

Project

AGREEMENT NO. CE45/2008(CE)  
LIANTANG/HEUNG YUEN WAI BOUNDARY  
CONTROL POINT AND ASSOCIATED WORKS

Title

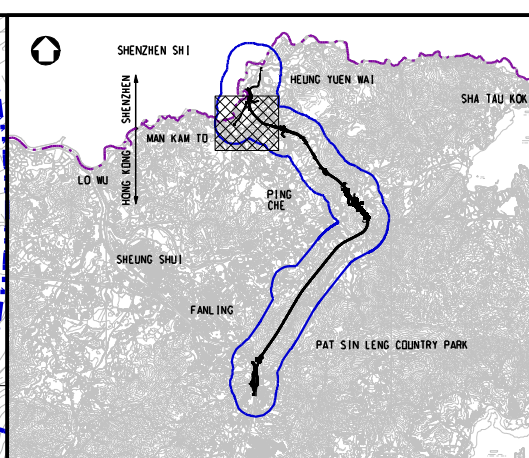
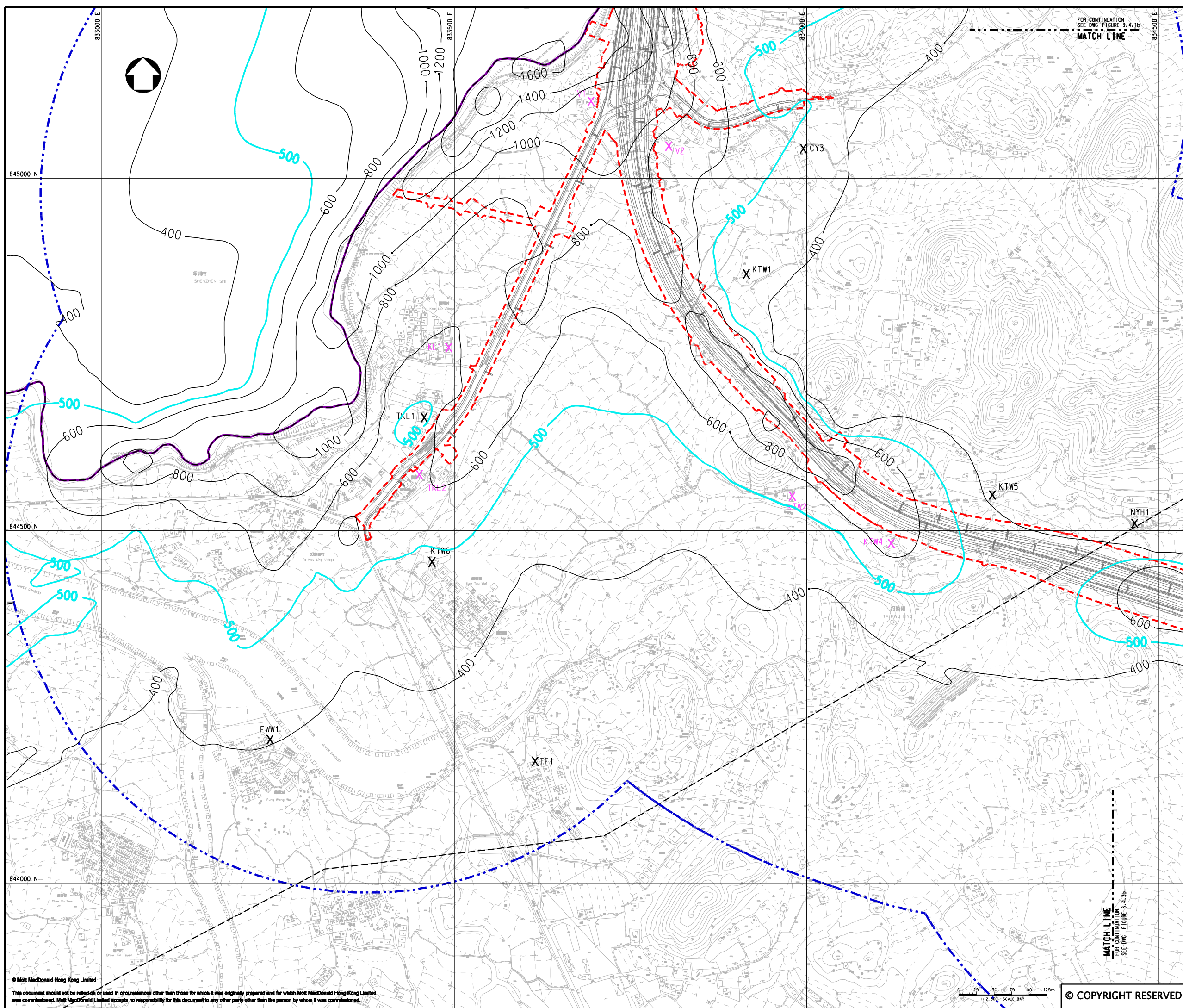
CUMULATIVE RESULT - CONTOUR OF TIER 1  
HOURLY TSP CONCENTRATION ( $\mu\text{g}/\text{m}^3$ ) AT 1.5m  
ABOVE GROUND DURING CONSTRUCTION PHASE  
(MITIGATED) FOR NORTHERN SECTION  
(SHEET 1 OF 4)

Designed	HC	Eng.Cht.	EC	
Drawn	MING	Coordination	EC	
Dwg.Cht.	HC	Approved	HT	
Scale at A1	Project	255228	Status	
1:2500	CAD File	jc255228\REPORT\ENV\ENV\A1\015\FIG 3-4.b.dgn	PRE	
Drawing No	FIGURE 3.4.1b	Rev	P2	

MATCH LINE  
FOR CONTINUATION  
SEE DWG. FIGURE 3.4.2b

© COPYRIGHT RESERVED





KEY PLAN  
SCALE 1:100000

- LEGEND:
- BOUNDARY OF HK SAR
  - 500m ASSESSMENT AREA
  - TENTATIVE WORKS AREA
  - AOD CRITERIA
  - X AIR SENSITIVE RECEIVERS COMPLIED WITH AOD CRITERIA.
  - X AIR SENSITIVE RECEIVERS EXCEEDED AOD CRITERIA.

P2	NOV 10	MMH	FINAL ISSUE	HC	HT
P1	OCT 10	MMH	FIRST ISSUE	HC	HT
Rev	Date	Drawn	Description	Ch'k'd	App'd

**Mott MacDonald**

20/F Two Landmark East  
100 How Ming Street  
Kowloon Tong, Kowloon  
Hong Kong  
T +852 2828 5757  
F +852 2827 1823  
W www.mottmac.com.hk

Client

**CEDD**

CIVIL ENGINEERING  
AND DEVELOPMENT  
DEPARTMENT

Project

AGREEMENT NO. CE45/2008(CE)  
LIANTANG/HEUNG YUEN WAI BOUNDARY  
CONTROL POINT AND ASSOCIATED WORKS

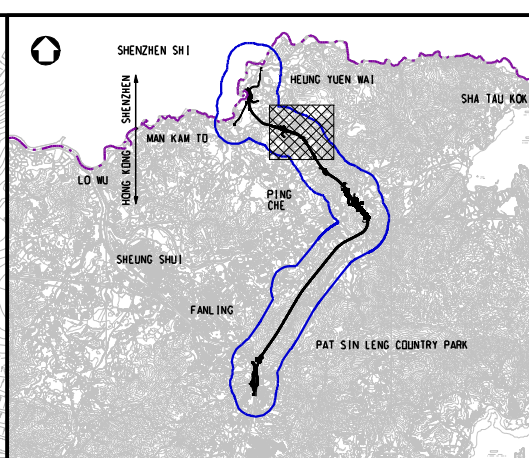
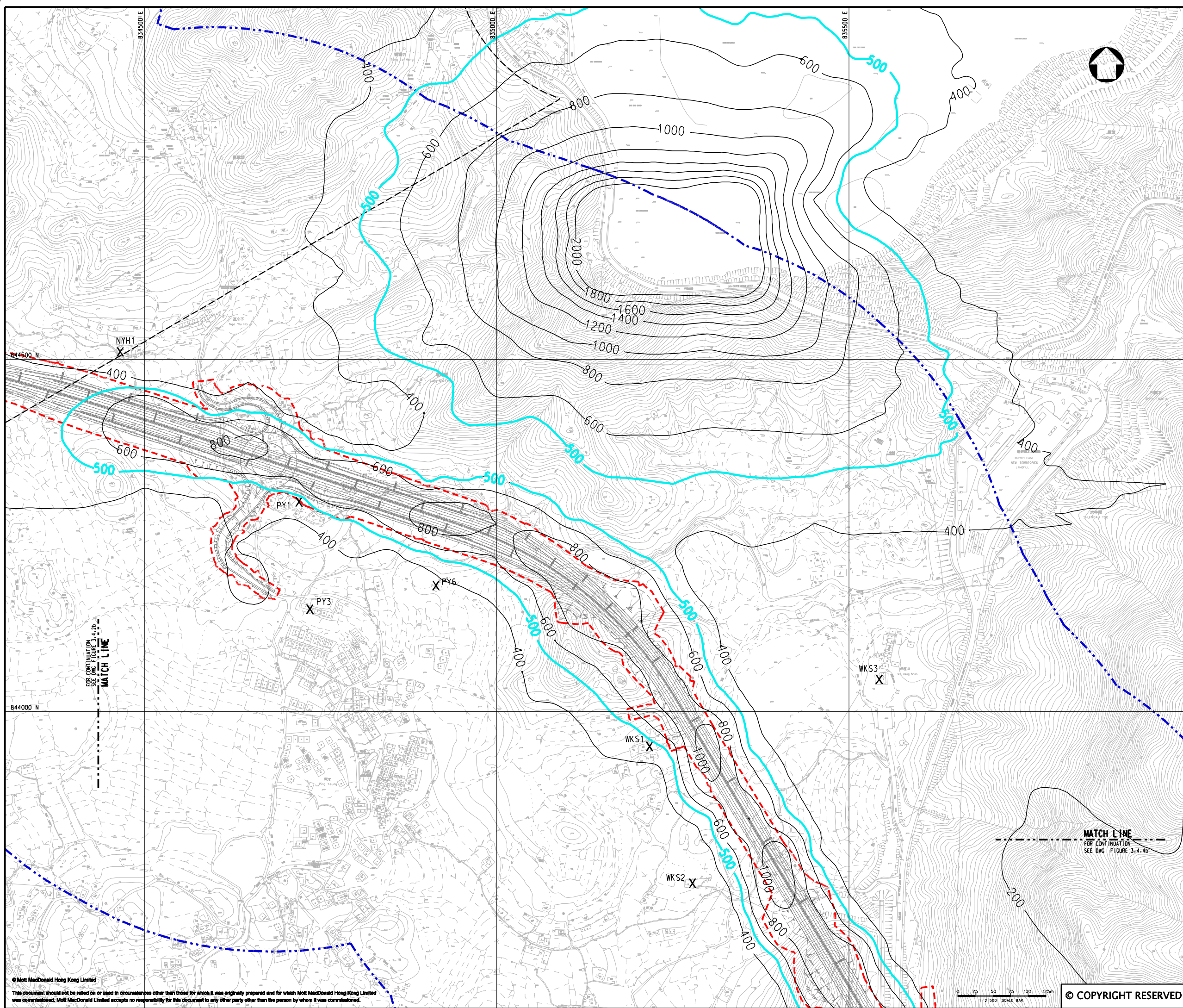
Title

CUMULATIVE RESULT - CONTOUR OF TIER 1  
HOURLY TSP CONCENTRATION ( $\mu\text{g}/\text{m}^3$ ) AT 1.5m  
ABOVE GROUND DURING CONSTRUCTION PHASE  
(MITIGATED) FOR NORTHERN SECTION  
(SHEET 2 OF 4)

Designed	HC	Eng.Chk.	EC
Drawn	MING	Coordination	EC
Dwg.Chk.	HC	Approved	HT
Scale at A1	Project	Status	
1:2500	255228	PRE	
Drawing No	FIGURE 3.4.2b	Rev	P2

© COPYRIGHT RESERVED





**KEY PLAN**  
SCALE 1:100000

**LEGEND:**

- 500m ASSESSMENT AREA
- TENTATIVE WORKS AREA
- AOO CRITERIA
- X AIR SENSITIVE RECEIVERS COMPLIED WITH AOO CRITERIA.
- X AIR SENSITIVE RECEIVERS EXCEEDED AOO CRITERIA.

P2	NOV 10	MMH	FINAL ISSUE	HC	HT
P1	OCT 10	MMH	FIRST ISSUE	HC	HT
Rev	Date	Drawn	Description	Ch'k'd	App'd

**Mott MacDonald**

20/F Two Landmark East  
100 How Ming Street  
Kowloon, Kowloon  
Hong Kong  
T +852 2828 5757  
F +852 2827 1823  
W www.mottmac.com.hk

Client

**CEDD**

**CIVIL ENGINEERING  
AND DEVELOPMENT  
DEPARTMENT**

Project

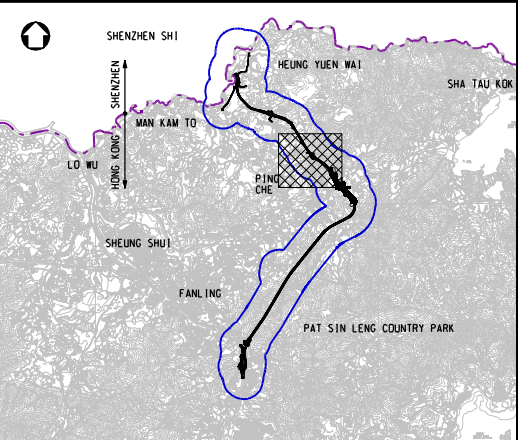
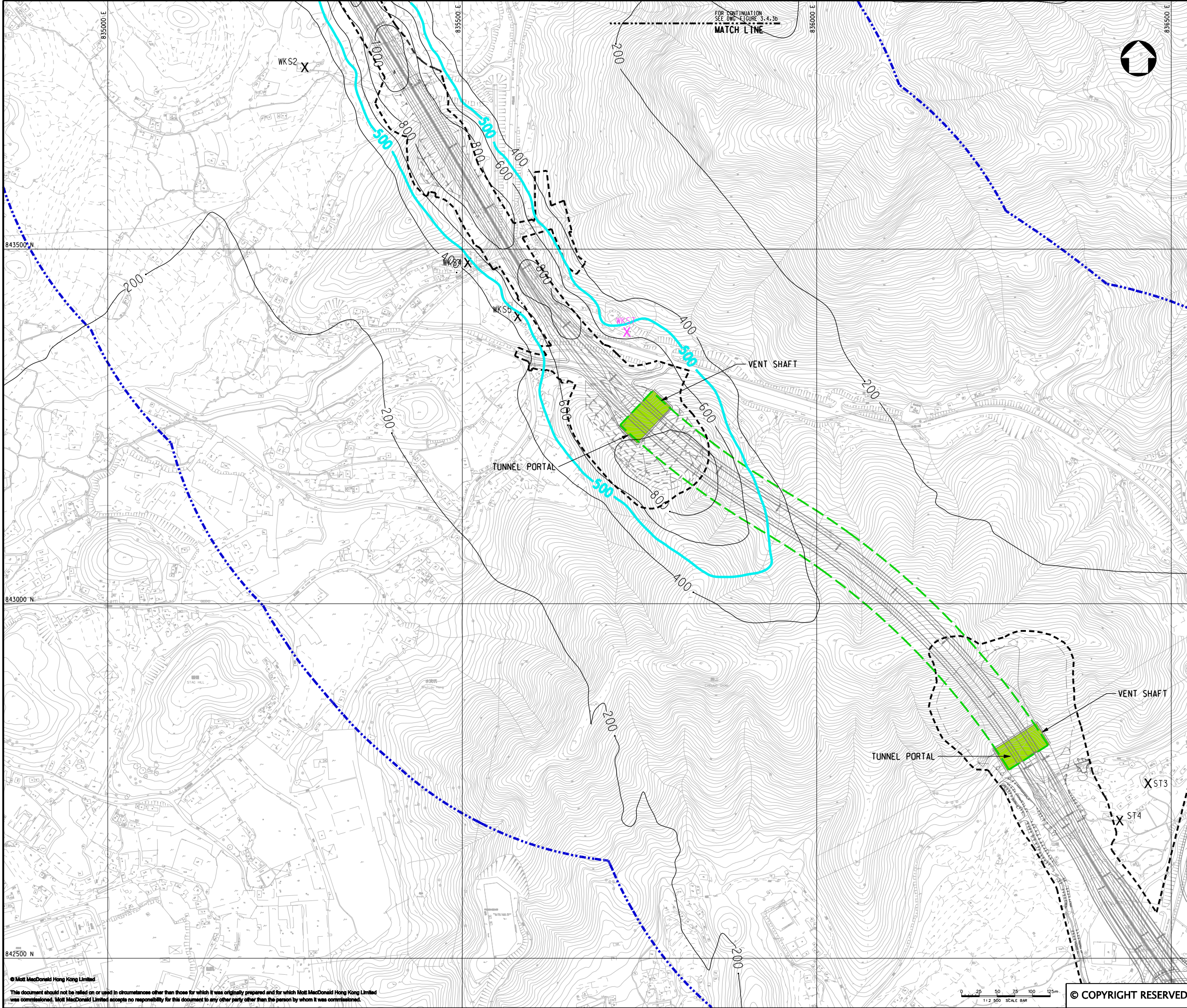
AGREEMENT NO. CE45/2008(CE)  
LIANTANG/HEUNG YUEN WAI BOUNDARY  
CONTROL POINT AND ASSOCIATED WORKS

Title

CUMULATIVE RESULT - CONTOUR OF TIER 1  
HOURLY TSP CONCENTRATION ( $\mu\text{g}/\text{m}^3$ ) AT 1.5m  
ABOVE GROUND DURING CONSTRUCTION PHASE  
(MITIGATED) FOR NORTHERN SECTION  
(SHEET 3 OF 4)

Designed	HC	Eng.Chk.	EC	
Drawn	MING	Coordination	EC	
Dwg.Chk.	HC	Approved	HT	
Scale at A1	Project	255228	Status	
1:2500	CAD file	Project	PRE	
Drawing No	FIGURE 3.4.3b	Rev	P2	





KEY PLAN  
SCALE 1:100000

- LEGEND:
- 500m ASSESSMENT AREA
  - TENTATIVE WORKS AREA
  - TUNNEL SECTION
  - AOD CRITERIA
  - PROPOSED TUNNEL VENTILATION BUILDING
  - AIR SENSITIVE RECEIVERS COMPLIED WITH AOD CRITERIA.
  - AIR SENSITIVE RECEIVERS EXCEEDED AOD CRITERIA.

P2	NOV 10	MMH	FINAL ISSUE	HC	HT
P1	OCT 10	MMH	FIRST ISSUE	HC	HT
Rev	Date	Drawn	Description	Ch'k'd	App'd



20/F Two Landmark East  
100 How Ming Street  
Kowloon Tong, Kowloon  
Hong Kong  
T +852 2828 6787  
F +852 2827 1823  
W www.mottmac.com.hk

Client

**CEDD**

**CIVIL ENGINEERING  
AND DEVELOPMENT  
DEPARTMENT**

Project

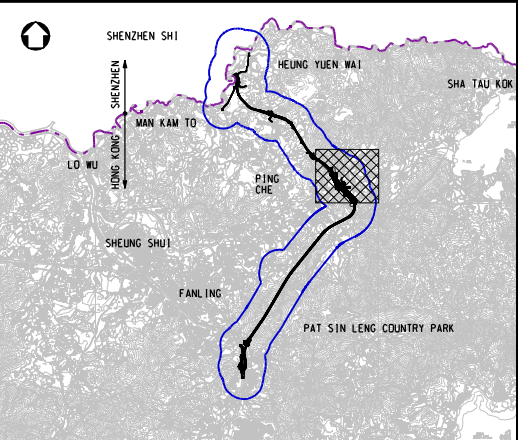
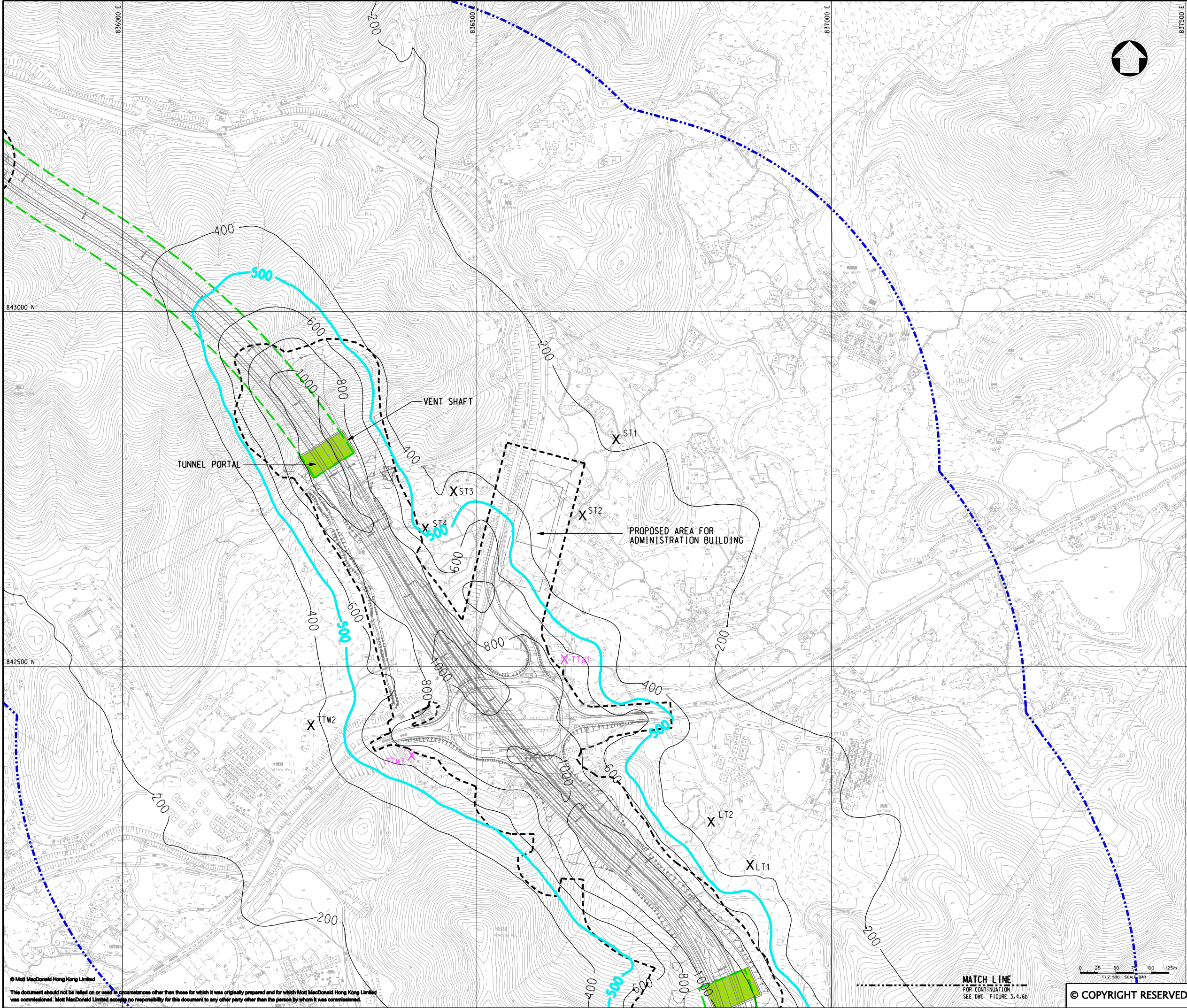
AGREEMENT NO. CE45/2008(CE)  
LIANTANG/HEUNG YUEN WAI BOUNDARY  
CONTROL POINT AND ASSOCIATED WORKS

Title

CUMULATIVE RESULT - CONTOUR OF TIER 1  
HOURLY TSP CONCENTRATION ( $\mu\text{g}/\text{m}^3$ ) AT 1.5m  
ABOVE GROUND DURING CONSTRUCTION PHASE  
(MITIGATED) FOR NORTHERN SECTION  
(SHEET 4 OF 4)

Designed	HC	Eng.Chk.	EC
Drawn	MING	Coordination	EC
Dwg.Chk.	HC	Approved	HT
Scale at A1	Project	Status	
1:2500	255228	PRE	
Drawing No	CAD file	Rev	
	J:\255228\report\env\elo\05\FIG 3-4.4b.dgn	P2	





**KEY PLAN**  
SCALE 1:100000

**LEGEND:**

- 500m ASSESSMENT AREA
- TENTATIVE WORKS AREA
- TUNNEL SECTION
- AQO CRITERIA
- PROPOSED TUNNEL VENTILATION BUILDING
- AIR SENSITIVE RECEIVERS COMPLIED WITH AQO CRITERIA.
- AIR SENSITIVE RECEIVERS EXCEEDED AQO CRITERIA.

P2	NOV 10	MMH	FINAL ISSUE	HC	HT
P1	OCT 10	MMH	FIRST ISSUE	HC	HT
Rev	Date	Drawn	Description	Ch'k'd	App'd

**Mott MacDonald**

20/F Two Landmark East  
100 How Ming Street  
Kowloon, Kowloon  
Hong Kong  
T +852 2828 6787  
F +852 2827 1823  
W www.mottmac.com.hk

Client

**CEDD**

**CIVIL ENGINEERING  
AND DEVELOPMENT  
DEPARTMENT**

Project

AGREEMENT NO. CE45/2008(CE)  
LIANTANG/HEUNG YUEN WAI BOUNDARY  
CONTROL POINT AND ASSOCIATED WORKS

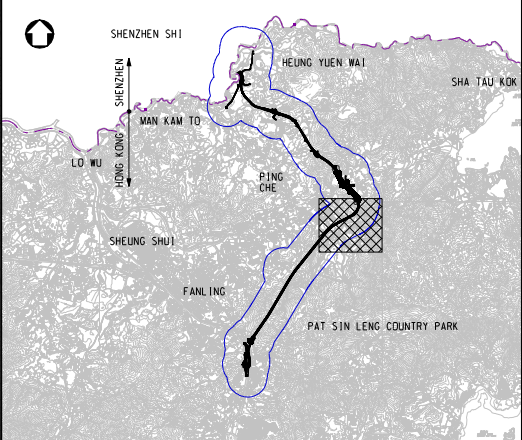
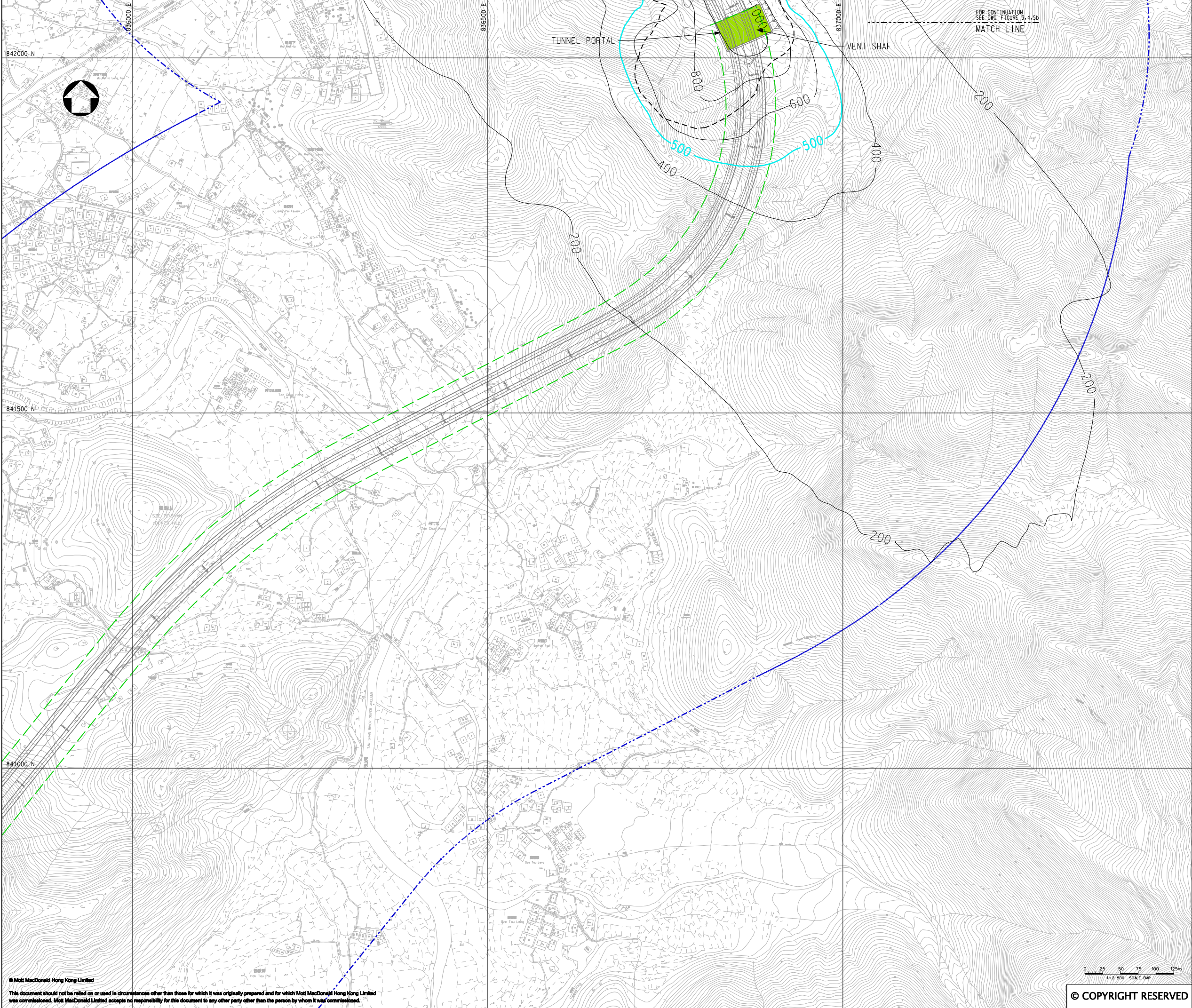
Title

CUMULATIVE RESULT - CONTOUR OF TIER 1  
HOURLY TSP CONCENTRATION ( $\mu\text{g}/\text{m}^3$ ) AT 1.5m  
ABOVE GROUND DURING CONSTRUCTION PHASE  
(MITIGATED) FOR LOI TUNG

(SHEET 1 OF 2)

Designed	HC	Eng.Chk.	EC
Drawn	MING	Coordination	EC
Dwg.Chk.	HC	Approved	HT
Scale at A1	1:2500	Project	255228
Drawing No	FIGURE 3.4.5b	Status	PRE
		Rev	P2





KEY PLAN  
SCALE 1:100000

LEGEND:

- 500m ASSESSMENT AREA
- TENTATIVE WORKS AREA
- TUNNEL SECTION
- AQO CRITERIA
- PROPOSED TUNNEL VENTILATION BUILDING

P2	NOV 10	MMH	FINAL ISSUE	HC	HT
P1	OCT 10	MMH	FIRST ISSUE	HC	HT
Rev	Date	Drawn	Description	Ch'k'd	App'd

**Mott MacDonald**

20/F Two Landmark East  
100 How Ming Street  
Kowloon  
Hong Kong  
T +852 2828 6787  
F +852 2827 1823  
W www.mottmac.com.hk

Client

**CEDD**

**CIVIL ENGINEERING  
AND DEVELOPMENT  
DEPARTMENT**

Project

AGREEMENT NO. CE45/2008(CE)  
LIANTANG/HEUNG YUEN WAI BOUNDARY  
CONTROL POINT AND ASSOCIATED WORKS

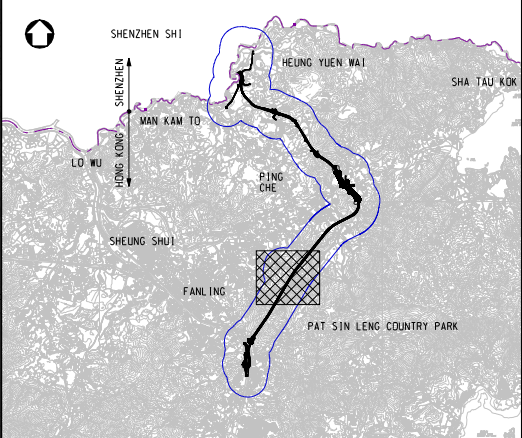
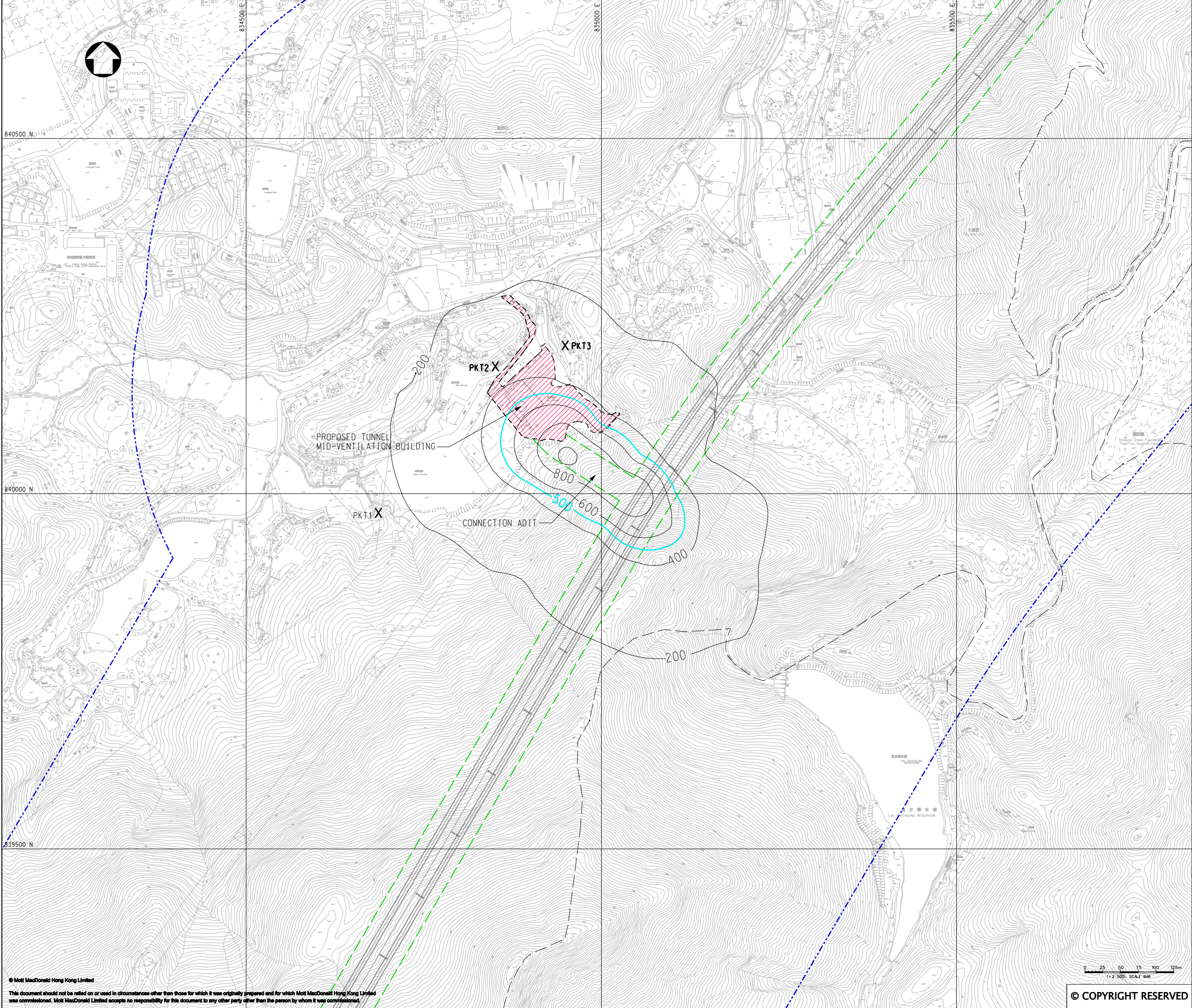
Title

CUMULATIVE RESULT - CONTOUR OF TIER 1  
HOURLY TSP CONCENTRATION ( $\mu\text{g}/\text{m}^3$ ) AT 1.5m  
ABOVE GROUND DURING CONSTRUCTION PHASE  
(MITIGATED) FOR LOI TUNG

(SHEET 2 OF 2)

Designed	HC	Eng.Chk.	EC
Drawn	MING	Coordination	EC
Dwg.Chk.	HC	Approved	HT
Scale at A1	Project	255228	Status
1:2500	CAD File	J:\255228\REPORT\ENV\ENV\A1\015\FIG 3-4.6b.dgn	PRE
Drawing No	FIGURE 3.4.6b	Rev	P2





KEY PLAN  
SCALE 1:100000

LEGEND:

- 500m ASSESSMENT AREA
- TENTATIVE WORKS AREA
- TUNNEL SECTION
- AAO CRITERIA
- PROPOSED AREA FOR MID-VENTILATION BUILDING
- AIR SENSITIVE RECEIVERS COMPLIED WITH AAO CRITERIA.
- AIR SENSITIVE RECEIVERS EXCEEDED AAO CRITERIA.

P2	NOV 10	MMH	FINAL ISSUE	HC	HT
P1	OCT 10	MMH	FIRST ISSUE	HC	HT
Rev	Date	Drawn	Description	Ch'k'd	App'd

**Mott MacDonald**

20/F Two Landmark East  
100 How Ming Street  
Kowloon  
Hong Kong  
T +852 2828 6787  
F +852 2827 1823  
W www.mottmac.com.hk

Client

**CEDD**

**CIVIL ENGINEERING  
AND DEVELOPMENT  
DEPARTMENT**

Project

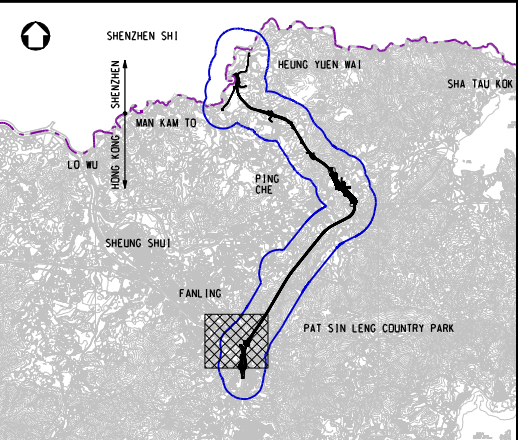
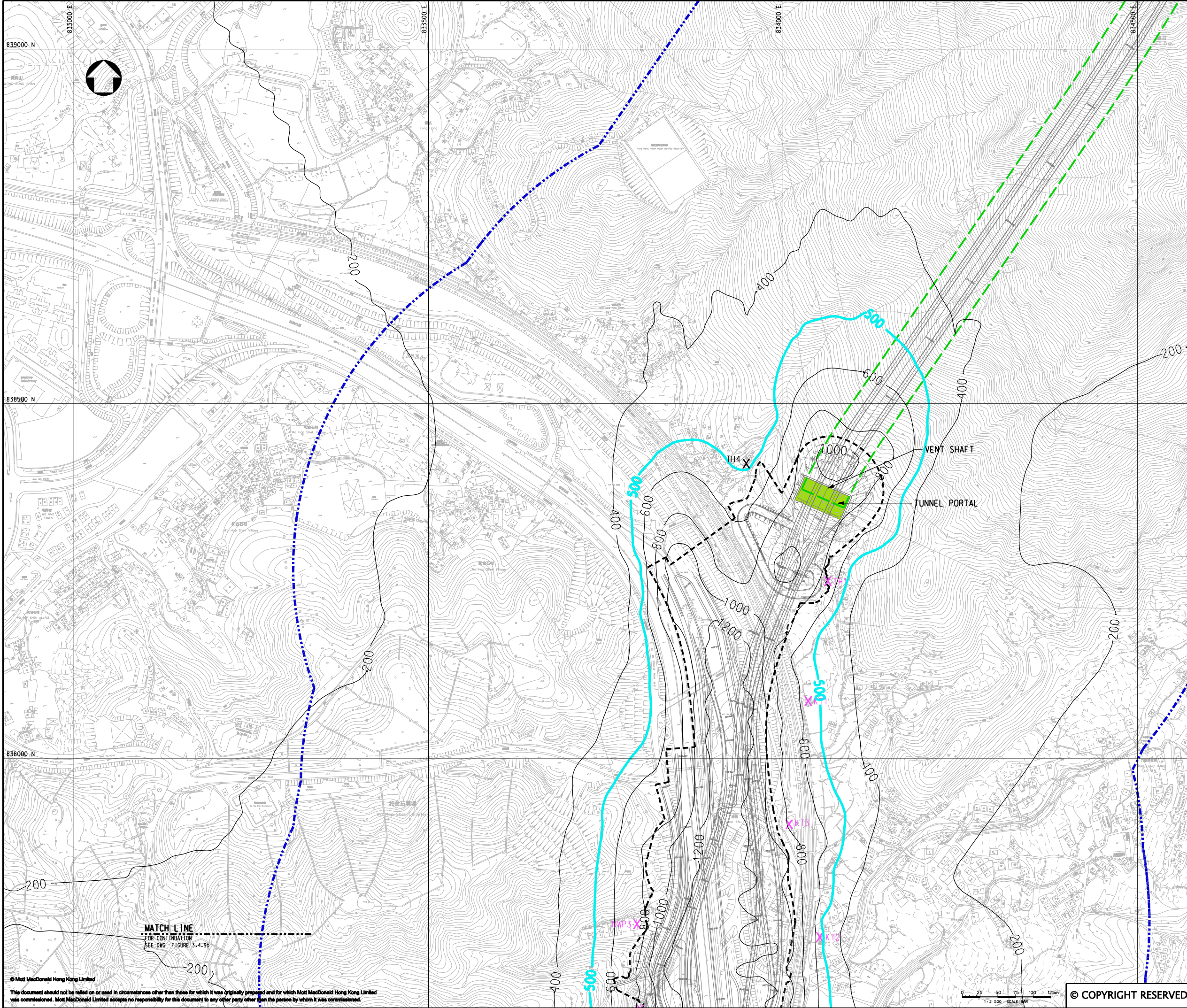
AGREEMENT NO. CE45/2008(CE)  
LIANTANG/HEUNG YUEN WAI BOUNDARY  
CONTROL POINT AND ASSOCIATED WORKS

Title

CUMULATIVE RESULT - CONTOUR OF TIER 1  
HOURLY TSP CONCENTRATION ( $\mu\text{g}/\text{m}^3$ ) AT 1.5m  
ABOVE GROUND DURING CONSTRUCTION PHASE  
(MITIGATED) FOR PO KAK TSAI

Designed	HC	Eng.Chk.	EC	
Drawn	MING	Coordination	EC	
Dwg.Chk.	HC	Approved	HT	
Scale at A1	Project	255228	Status	
1:2500	CAD File	JO\255228\REPORT\ENV\EA\1005\FIG 3-4.7b.dgn	PRE	
Drawing No	FIGURE 3.4.7b	Rev	P2	





KEY PLAN  
SCALE 1:100000

- LEGEND:
- 500m ASSESSMENT AREA
  - TENTATIVE WORKS AREA
  - TUNNEL SECTION
  - AOD CRITERIA
  - PROPOSED TUNNEL VENTILATION BUILDING
  - AIR SENSITIVE RECEIVERS COMPLIED WITH AOD CRITERIA.
  - AIR SENSITIVE RECEIVERS EXCEEDED AOD CRITERIA.

P2	NOV 10	MMH	FINAL ISSUE	HC	HT
P1	OCT 10	MMH	FIRST ISSUE	HC	HT
Rev	Date	Drawn	Description	Ch'k'd	App'd

20/F Two Landmark East  
100 How Ming Street  
Kowloon Tong, Kowloon  
Hong Kong  
T +852 2828 6787  
F +852 2827 1823  
W www.mottmac.com.hk

Client

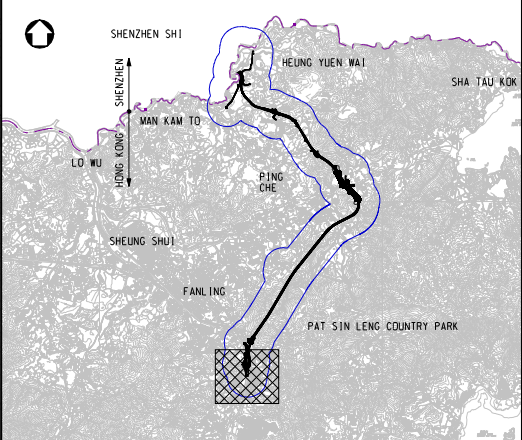
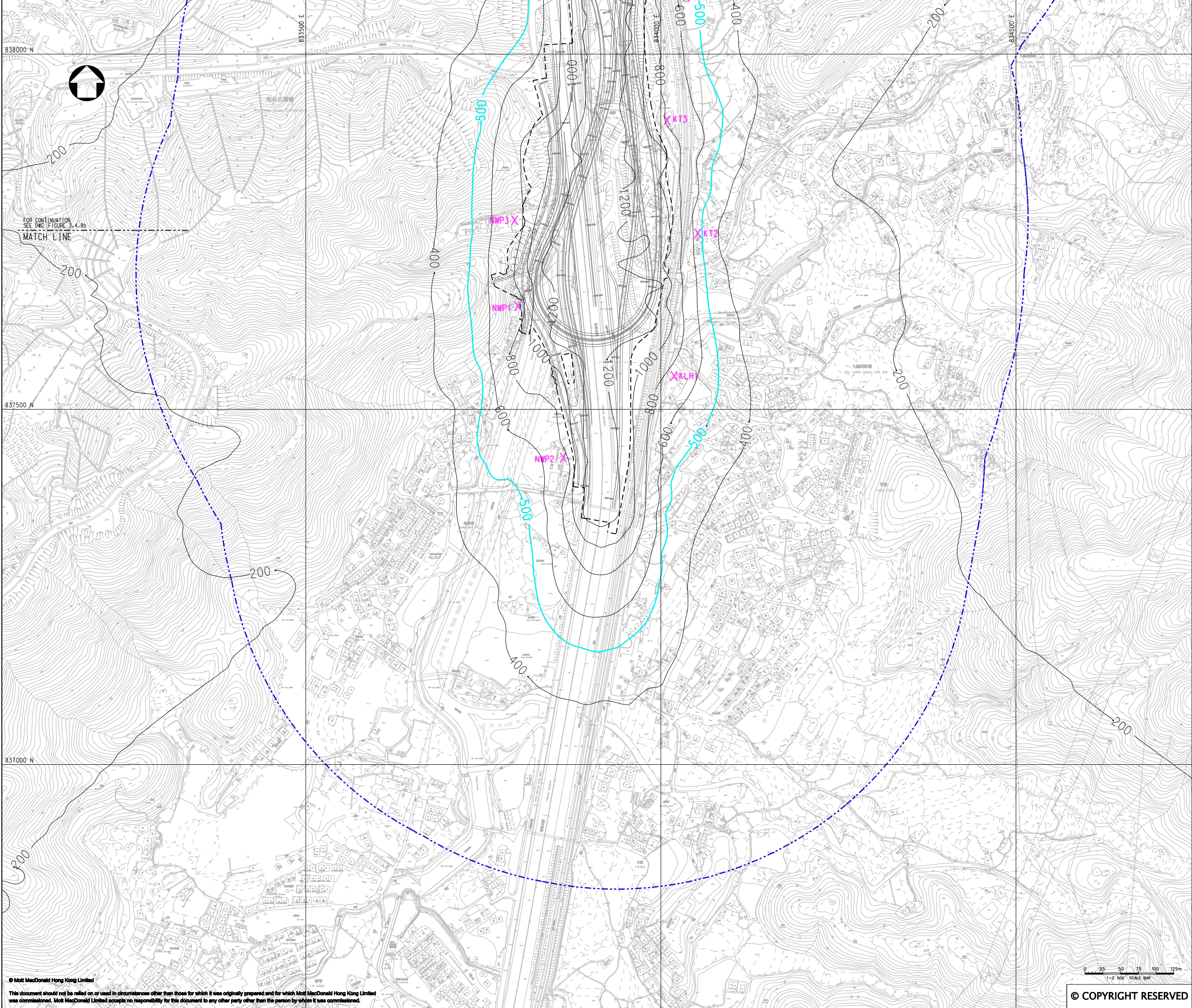
CIVIL ENGINEERING  
AND DEVELOPMENT  
DEPARTMENT

Project  
AGREEMENT NO. CE45/2008(CE)  
LIANTANG/HEUNG YUEN WAI BOUNDARY  
CONTROL POINT AND ASSOCIATED WORKS

Title  
CUMULATIVE RESULT - CONTOUR OF TIER 1  
HOURLY TSP CONCENTRATION ( $\mu\text{g}/\text{m}^3$ ) AT 1.5m  
ABOVE GROUND DURING CONSTRUCTION PHASE  
(MITIGATED) FOR FANLING  
(SHEET 1 OF 2)

Designed	HC	Eng.Chk.	EC	
Drawn	MING	Coordination	EC	
Dwg.Chk.	HC	Approved	HT	
Scale at A1	1:2500	Project	255228	Status
		CAD file	j:\255228\report\env\elo\005\FIG 3-4.8b.dgn	PRE
Drawing No				Rev
			FIGURE 3.4.8b	P2





KEY PLAN  
SCALE 1:100000


- LEGEND:
- 500m ASSESSMENT AREA
  - TENTATIVE WORKS AREA
  - AQO CRITERIA
  - AIR SENSITIVE RECEIVERS COMPLIED WITH AQO CRITERIA.
  - AIR SENSITIVE RECEIVERS EXCEEDED AQO CRITERIA.

P2	NOV 10	MMH	FINAL ISSUE	HC	HT
P1	OCT 10	MMH	FIRST ISSUE	HC	HT
Rev	Date	Drawn	Description	Ch'k'd	App'd



20/F Two Landmark East  
100 How Ming Street  
Kowloon, Kowloon  
Hong Kong  
T +852 2828 6787  
F +852 2827 1823  
W www.mottmac.com.hk

Client

 **CIVIL ENGINEERING  
AND DEVELOPMENT  
DEPARTMENT**

Project

AGREEMENT NO. CE45/2008(CE)  
LIANTANG/HEUNG YUEN WAI BOUNDARY  
CONTROL POINT AND ASSOCIATED WORKS

Title

CUMULATIVE RESULT - CONTOUR OF TIER 1  
HOURLY TSP CONCENTRATION ( $\mu\text{g}/\text{m}^3$ ) AT 1.5m  
ABOVE GROUND DURING CONSTRUCTION PHASE  
(MITIGATED) FOR FANLING

(SHEET 2 OF 2)

Designed	HC	Eng.Chk.	EC
Drawn	MING	Coordination	EC
Dwg.Chk.	HC	Approved	HT
Scale at A1	Project	255228	Status
1:2500	CAD File	255228\REPORT\ENV\ENV\A1\015\FIG 3-4.9b.dgn	PRE
Drawing No	FIGURE 3.4.9b	Rev	P2